

**Midwest Historical &  
Genealogical Society**

**Wichita, Kansas**

**1890 Wichita City Directory**

Transcribed by Nancy Lou Welshimer Fincham



FROM THE LIBRARY OF  
MR. AND MRS. CLIF NAFTZGER

**SIXTH ANNUAL**  
**DIRECTORY**  
—OF THE—  
**CITY OF WICHITA,**  
**FOR 1890.**

---

---

Including a list of names of the Inhabitants, together with a Classified Business Directory, and  
Church and Society Directory.

---

PRICE, \$4.50.

---

COMPLIED AND PUBLISHED BY

**F. A. NORTH**

WICHITA, KANSAS.

---

EAGLE JOB OFFICE AND EXPRESS

## INTRODUCTION

---

A city directory is the key that opens the door to inquirers after a proper knowledge of a city's importance, and in offering this, our sixth annual directory, to our patrons and the public, we are sure that its pages contain reliable answers to the numberless questions which in a city of this magnitude are of daily occurrence.

Although the past year has been one of marked depression throughout the country, yet Wichita has not only held her own, but presents a marked advancement as shown by the great increase in her bank clearings.

The commercial importance of Wichita is being more and more recognized, and as a live stock market and a packing center, her growth has been phenomenal since their establishment less than two years ago, and in a very few years we may expect to see her the leading stock market and packing center west of the Mississippi River.

More new industries are under actual headway and being contemplated, and more substantial public improvements are being made at the present than at any time during the past, among which we mention the completion of the new government building, and the new county building and the new city building under construction.

We would also mention the paving of the principal streets, which is nearing completion, greatly increasing the value of property and the convenience of travel.

The several street car companies have consolidated and the horse car lines will be replaced by well equipped electric lines.

In conclusion we would return our kindest acknowledgment to our patrons, friends and the public for the aid and encouragement so kindly tendered us.

Very respectfully,  
F. A. North

Wichita, Kan., June 1, 1890.

---

## STREET DIRECTORY.

Abbie ave, extension of Volutsia from Central to 13<sup>th</sup>  
Academy ave, extension of Volutsia from 13<sup>th</sup> to 17<sup>th</sup>  
Academy ave, ws, extension of Grand ave from Meridian w  
Addison st, extension of Park ave from Central to 9<sup>th</sup>  
Adeline st, 37<sup>th</sup> n of Douglas av fr Little River e  
Agnes st, 36<sup>th</sup> n of Douglas from Foster ave, e to Wichita  
Alice ave, extension of Poplar ave fr 11<sup>th</sup> to 13<sup>th</sup>  
Allen ave, extension of Poplar ave fr 11<sup>th</sup> to 13<sup>th</sup>  
Allen ave, extension of Mathewson fr Central to 9<sup>th</sup>  
Allman ave, 30<sup>th</sup> e of Main fr Douglas s to Gilbert  
Anderson ave, ws, extension of Webster st fr Exposition w  
Arkansas ave, 5<sup>th</sup> w of Main fr 17<sup>th</sup> n to city limits  
Ash st, 21<sup>st</sup> e of Main fr Douglas n to 2<sup>nd</sup>  
Avenue "A", is that part of Johnson bet Kellogg and Lincoln  
Avenue "B" extension of Grace fr Kellogg to Levy  
Avenue "C" extension of Kirk ave fr Kellogg to Howard  
Bayley st, that part of Henry fr river e to Market  
Beacon ave, 13<sup>th</sup> w of Main fr 11<sup>th</sup> to 17<sup>th</sup>  
Bernice ave, extension of Minnesota from 2<sup>nd</sup> to Pine  
Bettie ave, 27<sup>th</sup> n Douglas fr Arkansas ave e to Ohio ave  
Bishop st, extension of Minneapolis fr Pine to 12<sup>th</sup>  
Bitting ave, 8<sup>th</sup> w of Main fr 10<sup>th</sup> to 12<sup>th</sup>

Blaine st, 7<sup>th</sup> n Douglas fr Ohio e to Cleveland  
 Bluff ave, 39<sup>th</sup> e of Main from Douglas n to Central  
 Buffum ave, 36<sup>th</sup> w Little river from Andrews w  
 Bonn st, 17<sup>th</sup> w river fr Maple  
 Boulevard ave, follows the w bank of Little river fr 13<sup>th</sup> to 19<sup>th</sup>  
 Briggs ave, extension 10<sup>th</sup> st, w to Big Arkansas  
 Brook ave, 20<sup>th</sup> e of Main, from Douglas s to Kellogg  
 Bryant st 35<sup>th</sup> e of Main fr Central n to 9<sup>th</sup>  
 Burns ave, 10<sup>th</sup> w Main fr 17<sup>th</sup> n  
 Campbell ave, extension of Mathewson fr 17<sup>th</sup> to 25<sup>th</sup>  
 Campbell ave, ws, extension Osage fr Maple s  
 Carter ave, 3<sup>rd</sup> w Little river fr Park ave n  
 Carey ave, 17<sup>th</sup> n Douglas from Little river e  
 Carlos ave, 9<sup>th</sup> w of Main fr 10<sup>th</sup> to 12<sup>th</sup>  
 Central ave, 4<sup>th</sup> n of Douglas fr river e  
 Charles ave, 16<sup>th</sup> w river from Anderson to Maple  
 Chateau ave, extension of Carne ave fr Lincoln s  
 Chatauqua ave, 30<sup>th</sup> e of Main fr Douglas n to Olive  
 Cherokee st, 2<sup>nd</sup> n of Douglas ws, from river to Seneca  
 Cherry st, extension of Indiana fr 9<sup>th</sup> to 21<sup>st</sup>  
 Clara ave, extension of High st, fr Hydraulic to Stites ave  
 Clark st, 20<sup>th</sup> s of Douglas fr river e to Hydraulic  
 Cleveland ave, 13<sup>th</sup> e of Main fr Douglas n  
 Clifton ave, 36<sup>th</sup> e of Main extending fr Central s to city limits  
 Columbia ave, 2<sup>nd</sup> w Little river fr 21<sup>st</sup> n  
 Cooledge ave, 11<sup>th</sup> w of Little river fr Andrew n  
 Cooley st, that part of 25<sup>th</sup> fr Little river e to Guthrie ave  
 Cowper st, 37<sup>th</sup> e of Main fr Central to 13<sup>th</sup>  
 Crown st, 2<sup>nd</sup> w Little river, from 17<sup>th</sup> n  
 Dayton ave, ws 7<sup>th</sup> s of Douglas fr river w  
 Decatur ave, 6<sup>th</sup> w of Little river, fr 21<sup>st</sup> n  
 Delaware ave, 3d w of Little river, fr 21<sup>st</sup> n  
 Dickens st, extension of Moser ave, fr Central n to 13<sup>th</sup>  
 Division st, extension of Waterman fr Washington e to Hydraulic  
 Dodge ave, 8<sup>th</sup> w of river fr Cedar to Maple  
 Dort ave, 10<sup>th</sup> w of Little river, fr Andrews n  
 Douglas ave, extending east and west to city limits. It is the basis of numbering on all streets running north and south.  
 Eagle st, extension of Walnut fr 5<sup>th</sup> to Cleveland  
 Edgar st, extension of Penn fr Pine to 9<sup>th</sup>  
 Eighteenth st, 18<sup>th</sup> n of Douglas fr Little river e  
 East Indiana ave, extension of Orme st fr Park ave to East st  
 Eleventh st, 11<sup>th</sup> n of Douglas fr Little river e to Hillside  
 Eliza ave, extension of Kirk fr Hodson s  
 Elizabeth ave, extension of Avenue "F" fr Frances to Hodson  
 Elizabeth ave, 11<sup>th</sup> w of river fr Cedar s  
 Elliott ave, extension of Poplar ave fr 9<sup>th</sup> to 11<sup>th</sup>  
 Ellis ave, 14<sup>th</sup> e of Main, fr Douglas s  
 Elm st, 5<sup>th</sup> n of Douglas, fr Riverview to Fifth ave  
 Emmerson st, extension of Bluff ave fr Central n  
 Emporia ave, 4<sup>th</sup> st e of Main, extends n and s to city limits  
 Erie st, extension of 25<sup>th</sup> st from Little river e  
 Errie st, 29<sup>th</sup> e of Main, from Douglas s to Kellogg  
 English st, 2d s of Douglas fr river e to 5<sup>th</sup> ave.  
 Estelle ave, 27<sup>th</sup> e of Main, extending from Kellogg to 13<sup>th</sup>  
 Everett st, 18<sup>th</sup> w of river fr Mentor s

Ewing ave, extension of Mathewson fr 9<sup>th</sup> to Seventeenth  
Exchange ave, 4<sup>th</sup> w of Little river fr 21<sup>st</sup> n  
Exposition ave, 9<sup>th</sup> w of river, fr Cedar to Maple  
Fairmount ave, extension of Park ave fr 13<sup>th</sup> n  
Fairview ave is that part of Wichita st bet 13<sup>th</sup> and 17<sup>th</sup> st  
Fannie ave, 15<sup>th</sup> e of Main fr Douglas s  
Faulkner ave, 7<sup>th</sup> w Little river, fr Andrews n  
Fern ave, 12<sup>th</sup> w of river fr Glenn s  
Fifth ave, 6<sup>th</sup> e of Main, extends n and s to city limits  
Fifteenth st, 15<sup>th</sup> n of Douglas, extends fr Little river e  
First st, next n of Douglas ave from river e  
First st, extension of Ash fr Second to Central  
Florence Ave, extension of Pennsylvania from 9<sup>th</sup> to 13<sup>th</sup>  
Forest ave, 11<sup>th</sup> w of Main fr 10<sup>th</sup> to 12<sup>th</sup>  
Fourth ave, 5<sup>th</sup> e of Main, extends n and s to city limits  
Fourteenth st, 14<sup>th</sup> n of Douglas fr Little river e  
Frances st, 17<sup>th</sup> south of Douglas fr river e  
Franklin ave, extension of Walnut fr Little river w  
Franklin ave, 23d s of Douglas from river e to city limits  
Frisco ave, extension of Park fr Hillside ave e  
Garden st, part of Walnut fr 5<sup>th</sup> ave to Hydraulic  
Garland ave, 8<sup>th</sup> w Little river fr 13<sup>th</sup> n  
Getto ave, extension of New York ave fr 9<sup>th</sup> to 13<sup>th</sup>  
Gilman ave, 5<sup>th</sup> w of Little river fr Park ave n  
Gilbert st, 9<sup>th</sup> s of Douglas fr river e to Avenue N  
Glenn ave, 15<sup>th</sup> w of river fr Anderson s to city limits  
Goethe ave, extension of Estelle fr 13<sup>th</sup> n  
Gold st, 5<sup>th</sup> w of Main fr Howard to Frances  
Gordon ave, extension of New York ave from 13<sup>th</sup> to 17<sup>th</sup>  
Grace ave, 18<sup>th</sup> e of Main fr Douglas s to Kellogg  
Grand ave, ws, extension of Cherokee fr Seneca to Meridian  
Grandview Ave, extension of Walnut fr Hydraulic e  
Green ave, 26<sup>th</sup> st e of Main extending from Central to Kellogg  
Greenway st, that part of Kellogg from river e to 5<sup>th</sup>  
Grove st, extension of Pennsylvania ave fr Pine to 9<sup>th</sup>  
Grove st, 24<sup>th</sup> e of Main running n and s fr Central to Kellogg  
Guy ave extension of Ash st fr 11<sup>th</sup> n  
Hancock st 2<sup>nd</sup> s Douglas, ws fr Martinson to Meridian  
Harney ave, 5<sup>th</sup> w of Little river fr 21<sup>st</sup> n  
Henry st, 7<sup>th</sup> w of Main fr 3<sup>rd</sup> to Elm  
Henry st, 12<sup>th</sup> s of Douglas fr river e  
Herbert ave, extension of Minneapolis fr 12<sup>th</sup> to 21<sup>st</sup>  
Hewitt ave, extension Walnut ws, fr Maple s  
High st, 23<sup>rd</sup> n of Douglas fr Little River e to 4<sup>th</sup> ave  
Highland ave, extension of Oak fr Hydraulic e  
Hillside ave, 32d e of Main running n and s to city limits  
Hinton ave, 4<sup>th</sup> n of Douglas fr 5<sup>th</sup> ave to Mead  
Hiram ave, 16<sup>th</sup> w of river fr Maple s  
Holyoke ave, 33d e of Main fr 13<sup>th</sup> n to city limits  
Hood ave, 7<sup>th</sup> w of river fr 17<sup>th</sup> n  
Howard st, 15<sup>th</sup> s of Douglas fr river e to city limits  
Humboldt ave, extension of Poplar fr 13<sup>th</sup> n  
Hunter st, that part of Lewis fr Washington e to Hydraulic  
Huron st, w extension of High st fr Little river w  
Hydraulic ave, 16<sup>th</sup> e of Main running n and s to city limits  
Ida ave, 10<sup>th</sup> e of Main fr Douglas ave s

Indiana ave, 12<sup>th</sup> e of Main fr Douglas n to Central  
 Indianapolis st, 8<sup>th</sup> s of Douglas fr river to Pattie ave  
 Jackson st, 4<sup>th</sup> st w of Main extending fr Walnut n to city limits  
 James st, 8<sup>th</sup> st w of Main fr 3d to Elm  
 Jeanette ave, 2d w Little river fr 13<sup>th</sup> to 17<sup>th</sup>  
 Jefferson ave, 6<sup>th</sup> w of Main fr 10<sup>th</sup> to 12<sup>th</sup>  
 Kellogg st, 6<sup>th</sup> s of Douglas fr river e  
 Kinkaid ave, 21<sup>st</sup> s of Douglas fr river e  
 LaFayette ave, w extension of 21<sup>st</sup> st fr Little river e to Water  
 Larimer ave, 7<sup>th</sup> w of Main fr 10<sup>th</sup> to 12<sup>th</sup>  
 Laura ave, 11<sup>th</sup> e of Main fr Douglas s to Franklin  
 Lawrence ave, 2d e of Main extends n and s to city limits  
 Levy st, 19<sup>th</sup> s of Douglas fr river e to Oliver ave  
 Lewellen ave, extension of Sherman st fr 10<sup>th</sup> to 13<sup>th</sup>  
 Lewis st, 4<sup>th</sup> s of Douglas fr river e to Washington  
 Lincoln st, 11<sup>th</sup> s of Douglas fr river e to city limits  
 Lincoln st ws, 4<sup>th</sup> n of Douglas fr river to Exposition  
 Litchfield ave, 8<sup>th</sup> w Little river fr Andrews n  
 Locust st, 22d e of Main n of Douglas to 2<sup>nd</sup>  
 Lorraine ave, extension of Moser ave from 11<sup>th</sup> to 17<sup>th</sup>  
 Louie ave, extension of Grove st fr Hodsons  
 Lulu ave, 13<sup>th</sup> e of Main fr Douglas s to Franklin  
 McCormick ave, 9<sup>th</sup> s of Douglas ws, fr river w  
 Mabel ave, is that part of Estelle bet Central and Oak  
 Madison ave, 35<sup>th</sup> e of Main fr Gilbert s to Henry  
 Main st, extending n and s to city limits. It is the basis of numbering on streets running east and west.  
 Maple st, extension of Prince fr Grove st e  
 Maple st, 3d s of Douglas fr river w  
 Market st, 1<sup>st</sup> e of Main extends n and s to city limits  
 Martinson ave, 10<sup>th</sup> w river fr Cedars  
 Mathewson ave, 14<sup>th</sup> e of Main fr Douglas n to Central  
 Mead ave, 7<sup>th</sup> e of Main extends n and s to city limits  
 Mentor ave, 4<sup>th</sup> s of Douglas ws fr Elizabeth to Meridian  
 Meridian ave, 22d w of river running n and s to city limits.  
 Milwaukee ave, is that part bet 21<sup>st</sup> and 23d  
 Milwood ave, 13<sup>th</sup> w of river fr Glenns  
 Minneapolis ave, 19<sup>th</sup> e of Main fr Douglas to 2d  
 Minnesota ave, 20<sup>th</sup> e of Main fr Douglas n to 2d  
 Mona ave, extension of Poplar fr Central to Oak st  
 Morris st, 5<sup>th</sup> s of Douglas fr river e to 5<sup>th</sup> ave  
 Morris st, 10<sup>th</sup> s of Doug & 2d Morris s of Doug fr river e to 5<sup>th</sup> ave  
 Moser ave, 38<sup>th</sup> e of Main running from Central s to Henry  
 Mosley ave, 8<sup>th</sup> e of Main running n and s to city limits  
 Motor ave, 9<sup>th</sup> w of Little river fr 13<sup>th</sup> n  
 Mt Vernon ave, extension of Royston fr 13<sup>th</sup> to 17<sup>th</sup>  
 Mulberry st, 5<sup>th</sup> s of Douglas, ws, fr river to Martinson  
 Myers ave, 22d n of Douglas fr Arkansas ave e to Dold's packing house  
 New York ave, 15<sup>th</sup> e of Main n of Douglas to 9<sup>th</sup>  
 Ninth (Park) st, 9<sup>th</sup> n of Douglas fr Little river e to city limits  
 Nineteenth st, 19<sup>th</sup> n of Douglas fr Big river e to city limits  
 North ave, extension of Minnesota fr Pine to 9<sup>th</sup>  
 Oak st, 7<sup>th</sup> n of Douglas fr Little river e  
 Oak st, 2d w of river fr Cherokee to Maple  
 Ohio ave, 11<sup>th</sup> e of Main from Douglas n to Cyrus ave  
 Olive st, 6<sup>th</sup> w of Main fr 20<sup>th</sup> to 22d st  
 Orchard st, extension of Oak, ws, fr Maple to Mulberry

Orme st, 7<sup>th</sup> s of Douglas fr river e to Park ave  
 Osage ave, 3d w of river fr Cedar w to Texas ave  
 Osie ave, 16<sup>th</sup> s of Douglas fr river e to Oakwood ave  
 Park ave, 34<sup>th</sup> e of Main running n and s fr Central to Levy st  
 Park Place ave, is that part of Water st bet 13<sup>th</sup> and 17<sup>th</sup>  
 Park st, 9<sup>th</sup> n of Douglas fr Little river e to Hillside ave  
 Parker ave, extension of Cowper st fr 13<sup>th</sup> n  
 Pattie ave, 12<sup>th</sup> e of Main fr Douglas s to Franklin  
 Payne ave, 6<sup>th</sup> w of Little river fr 17<sup>th</sup> n  
 Pearl ave, extension of Sherbourn fr Frances s  
 Pearl st, 1<sup>st</sup> n of Douglas, w s, fr river to Dodge  
 Pear st, that part of Henry fr Topeka to Fifth ave  
 Pennsylvania ave, 16<sup>th</sup> e of Main fr Douglas n to Pine  
 Piatt ave, extension of Ash st fr Pine to 11<sup>th</sup>  
 Pierce ave, 10<sup>th</sup> w of Main fr 10<sup>th</sup> to 12<sup>th</sup>  
 Pine st, 6<sup>th</sup> n of Douglas fr Little river e to 5<sup>th</sup> ave  
 Pine st, ws, 2d s of Douglas fr river to Elizabeth  
 Plum st, extension of Indiana from Central to 9<sup>th</sup>  
 Poe ave, 5<sup>th</sup> w of Little river fr 17<sup>th</sup> n  
 Poplar st, 25<sup>th</sup> e of Main fr Douglas s to Kellogg  
 Porter ave, 9<sup>th</sup> w of Little river fr Andrews n  
 Power st, 21<sup>st</sup> w of river fr Douglas s  
 Prince st, 1<sup>st</sup> s of Douglas e of William fr Washington e to Brook  
 Royston ave, 29<sup>th</sup> e of Main fr Douglas n to Central  
 Riddell ave, extension of Spruce fr 10<sup>th</sup> n  
 River st, 4<sup>th</sup> w of Main extending fr Pine st s to city limits  
 Riverside ave, fr w end Park n w to Buffum ave  
 Riverview ave, is that part of River st bet Elm and 2d  
 Rochester ave, is that part of Jackson bet 13<sup>th</sup> and 15<sup>th</sup>  
 Schiller ave, extension of Green ave fr 13<sup>th</sup> n  
 Second st, 2d n of Douglas ave fr river e  
 Second st, runs n and s bet 2d and Central e of Short st  
 Sedgwick ave, extension of Minnesota fr 9<sup>th</sup> w  
 Seneca st, 7<sup>th</sup> w river fr Cedar s  
 Seventeenth st, that part of Carey ave fr Hydraulic e  
 Shelton ave, 6<sup>th</sup> w of Main from 22d to 25<sup>th</sup>  
 Sherman st, 5<sup>th</sup> w of Main extending fr 2d to Elm  
 Short st, extension of Locust fr 2d to Central  
 Sherwood ave, 5<sup>th</sup> w of Main fr 13<sup>th</sup> to 17<sup>th</sup>  
 Sixteenth st, 18<sup>th</sup> n of Douglas fr Little river e  
 Skinner st, 18<sup>th</sup> n of Douglas fr river e to Linden ave  
 Spaulding ave, 4<sup>th</sup> w of river fr Park ave n  
 Spruce st, 23d e of Main fr Douglas n to Central  
 St John st, extension of Minneapolis fr 2d to Pine  
 Stephens st, 6<sup>th</sup> w of Main fr 3d to Elm  
 Stites ave, extension of Grove st fr Central n  
 Stover st, that part of Park fr Washington ave to Cleveland  
 Strong ave, extension of Locust fr 13<sup>th</sup> n  
 Sycamore st, 1<sup>st</sup> w of river running n and s  
 Tarsy ave, 4<sup>th</sup> w of Little river fr 13<sup>th</sup> to 17<sup>th</sup>  
 Tenth st, 10<sup>th</sup> n of Douglas fr Little river e  
 Texas ave, 1<sup>st</sup> st s of Douglas, ws, fr river w to Elizabeth  
 Third st, 3d n of Douglas fr river e  
 Thirteenth st, 13<sup>th</sup> n of Douglas fr Little river e  
 Topeka ave, 3d e of Main, extends n and s to city limits  
 Twentieth st, 20<sup>th</sup> n of Douglas fr Big river e to city limits

Twelfth st, 12<sup>th</sup> n of Douglas fr Little river e  
 Twenty-first st, 21<sup>st</sup> n of Douglas fr Little river e  
 Twenty-fifth st, 25<sup>th</sup> n of Douglas fr Little river e  
 Twenty-sixth st, 26<sup>th</sup> n of Douglas from Decatur e  
 Tyler ave, same as Stites ave  
 University ave, 5<sup>th</sup> s of Douglas ws, fr Martinson to Garfield University  
 Vassar ave, extension of Bryant st fr 13<sup>th</sup> n  
 Volutsia ave, 28<sup>th</sup> e of Main extending fr Kellogg to Central  
 Wabash ave, 10<sup>th</sup> e of Main from Douglas n  
 Waco st, 3d w of Main, extends n and s to city limits  
 Walnut st, 8<sup>th</sup> n of Douglas fr Little river e to Hillside  
 Walnut st, ws, 6<sup>th</sup> w of river fr Cedar to Maple  
 Washington ave, 9<sup>th</sup> e of Main n and s to city limits  
 Waterman st, 3d s of Douglas fr river to Washington  
 Webster st, 3d n of Douglas, ws, fr river to Exposition  
 Wheeler ave, 15<sup>th</sup> s of Douglas, ws, fr river w  
 William st, 1<sup>st</sup> s of Douglas fr river e to 5<sup>th</sup>  
 Wichita ave, 5<sup>th</sup> w of river fr Cedar to Maple  
 Wichita st, 2d w of Main extending n and s to city limits  
 Woodland ave, extension of Kirk fr Frances to Hodson  
 Woodland ave, 3d w of Little river fr 13<sup>th</sup> n  
 Woodman ave, w extension of Twelfth between rivers  
 Wynona ave, is that part of Estelle from 2d to Central  
 Yale ave, extension of Myers e fr Stites ave  
 Zimmerly st, 13<sup>th</sup> s of Douglas fr river e

## INDEX

Abbreviations, 9.	Shaw Thomas, long line back cover
Arrow, opposite 40.	State National Bank, long line of cover
Bitting Bros, back cover	The Arcade, top cover.
Braitsch John, opposite 64.	The C. E. Potts Drug Co, fourth quarter back cover,
Bunnell & Eno Invest Co, long line front cover	Republic, opposite 305.
Business Directory, 455.	Western Collection Bureau, end of pages and opposite 496.
Champion Charles T, top and bottom margin	Wichita National Bank, first quarter front cover.
Churches and societies, 490.	Wichita & Western Ry., opp 361.
Conly John J, long line back cover	
Cooper S W, see quarter of cover.	
Daily Journal, opposite 248.	
Daily Drovers' News, opposite 85.	
European Hotel, opposite 41.	
Evening News-Beacon, opp 304	
Fourth National Bank, sec quarter back cover.	
Henley Sign Studio, bottom line back cover.	
Holliday J. R., third quarter front cover and opposite 171.	
Hossfeld H., opposite 170.	
Kansas Abstract Agency, end of pages and opposite 496.	
Lombard Mortgage Co, opposite 144.	
Masonic Directory, 491.	
Mo. Pacific Ry., fourth quarter of cover.	
Official Directory, 489.	
Richards G F, opposite 249.	
Rogers W. S., bottom line of cover.	



ADVERTISEMENTS

J. P. MAHAN

T. H. MAHAN

—THE—

**EUROPEAN**  
**HOTEL.**

---

TABLE BOARD,  
\$3.50 PER WEEK.

---

RATES PER DAY,  
⇒\$1.00 TO \$1.50.⇒

---

TWO BLOCKS FROM DEPOT.

---

MAHAN BROS., Proprietors,

416 EAST DOUGLAS AVENUE.

# JOHN BRAITSCH

THE PIONEER



ESTABLISHED 1872.

FINE SHOES A SPECIALTY

120 EAST DOUGLAS AVE.

# **The Daily Drovers' News.**

Complete Daily Market Reports of the Wichita Union Stock Yards.

---

## **The Daily Drovers' News**

Is the Largest Live Stock Daily Paper published in  
the United States.

---

It is the only Daily Live Stock Paper Published  
Southwest of the Missouri.

---

Its growth is keeping pace with the wondrous in-  
crease of Wichita Stock Yards' interests.

---

By Mail, \$4.00 per Year in Advance.

---

**THE NEWS-BEACON COMPANY,**

**JOHN S. RICHARDSON,**

**EDITOR.**

**FREDERICK N. PECK,**

**PUBLISHER**

**117 WEST DOUGLAS AVE., WICHITA.**

HENRY LOMBARD, JR., Presd.

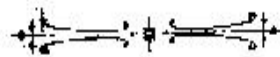
JAS. L. LOMBARD, V. Presd.

J. T. COCHRAN, Sec'y and Gen'l Manager.

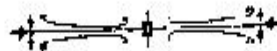
L. D. SKINNER, Treas.

G. W. BRISTOW, Cash.

❖ LOMBARD ❖  
MORTGAGE ❖ COMPANY.



FARM AND CITY  
LOANS.



---

OFFICES OVER STATE NATIONAL BANK,  
COR. MAIN AND DOUGLAS.

Holliday J R,

1881.

1890.

**J. R. HOLLIDAY,**

**Wichita Grocery,**

WHOLESALE AND RETAIL

▷ **FANCY GROCERIES.** ◁

All Goods Warranted,

Telephone 295,

221 e Douglas

r 1002 s Topeka

**PAYNE ROBERT L,** with

**J. R. HOLIDAY,**

**“WICHITA GROCERY,”**

**Wholesale and Retail Groceries 221 e**

**Douglas ave.**

Telephone 295

Room 132 n Topeka

**PAYNE MARSHALL E.** with

**J. R. HOLLIDAY,**

**‘ WICHITA GROCERY,’**

Telephone 295.

Rooms 132 n Topeka

**ROWLEY W E**, foreman for

**J. R. HOLLIDAY,**  
**"WICHITA GROCERY,"**  
Specialties:—Coffees, Extracts, Dew  
Drop Canned Goods, 221  
e Douglas Ave.

Room 305 Wabash

**SAYRE MISS NELLIE**, Cashier and bookkeeper for

**J. R. HOLLIDAY,**

**"WICHITA GROCERY."**

**Wholesale and Retail Groceries**  
**221 e Douglas Telephone 295**

**Residence 132 n Topeka**

THE WICHITA

# Daily Journal

— IS THE —

**MOST ENTERPRISING EVENING PAPER**

**IN THE SOUTHWEST.**

**Newsy, Reliable and Always in the Lead.**

Has the Largest Circulation of any Paper in Wichita.

Is the Best Advertising Medium in the City.

Ten Cents per Week Delivered at Your Door.

**125 South Main Street,**

**Journal Publishing Co.**

THE

# Weekly Journal

Has the Guaranteed Largest Circulation of any one Paper in the State.



G. F. RICHARDS,  
THE PRINTER.

HIGH GRADE  
Job Printing.  
Promptly Executed

EAST BOSTON, MASS.  
1897





The Evening News-Beacon.

The Wichita Weekly Beacon.

The Daily Drovers' News.

## **The News-Beacon**

Is the only Evening Paper in Southern Kansas Receiving  
Associated Press Dispatches.

**LIVE! ABLE! ENERGETIC!**

The past year has been one of progress. Handsome  
new offices and a complete new outfit insure  
its natural prominence as

The Leading Evening Newspaper of the Great Southwest.

Special News Bureaus in Washington, Chicago and Topeka

Evening News-Beacon, 10 cents a Week.

Weekly Beacon, \$1.00 per Year.

The Cheapest Newspaper

West of the Mississippi, receiving Associated Press Dispatches.

—THE—  
**REPUBLIC**

**PRINTING HOUSE**

125 N. MARKET STREET.

PRINTERS AND PUBLISHERS OF

**The Wichita Republic!**  
**The Alliance News!**

AND OTHER PERIODICAL LITERATURE.

A Co-operative Book, Newspaper, and Magazine  
Publishing Company to be added  
this year.

THE REPUBLIC IS THE NEXT OLDEST PAPER IN THE CITY

J. S. JENNINGS, Publisher.

## **"NINNESCAH ROUTE"**

# **THE WICHITA & WESTERN RAILWAY**

---

Traverse the finest farming and grazing country in Southern Kansas, running through the beautiful Ninnescah Valley, and the land for the Home Seeker. The only line from Wichita and points east to

**KINGMAN,  
SARATOGA,  
PRATT,  
CULLISON,  
GREENSBURG  
and MULLINVILLE.**

---

Two Trains of Elegant New Coaches daily, between Wichita and these points, all trains making direct connection at Wichita Union Depot with Santa Fe and Frisco trains to and from all points North and East, South and West.

---

Ask for tickets via this line and see that you get them. For sale at all coupon ticket offices throughout the country.

---

**E. W. KINSLEY, Pres.,**  
New York City.

**D. H. RHODES, Supt. and Chief Engineer,**  
Wichita, Kansas.

J. P. WHEELER, Manager. F. T. VINCENT. P. A. ROHRBAUGH, Attorney.

# Kansas Abstract Agency,

ROOMS 17 AND 18 FIREBAUGH BLOCK,

154 N. Market Street, - WICHITA, KANSAS.

TELEPHONE 373.

Reliable Abstracters and Attorneys in Every County Seat  
in Kansas.

Abstracts, Diagrams, Descriptions and Values together with all kinds of  
information about lands in Kansas furnished.

A DEPOSIT OF \$2 REQUIRED TO ACCOMPANY EACH ORDER.

F. T. VINCENT, Manager.

J. P. WHEELER, Treasurer.

P. A. ROHRBAUGH, Gen'l Att'y.

## Western Collection Bureau,

COMMERCIAL ADJUSTERS,

Collectors and Reporters,

ROOMS 17 AND 18 FIREBAUGH BLOCK.

No. 154 N. Market St., - WICHITA, KANSAS.

ATTORNEYS AND CORRESPONDENTS AT ALL POINTS.

Collections made anywhere in the United States, the British Provinces and Europe.  
Special Reports on Financial Standing of Merchants furnished on application.  
Special Trips Made to Secure Claims when Necessary.

RAILROAD CLAIMS.

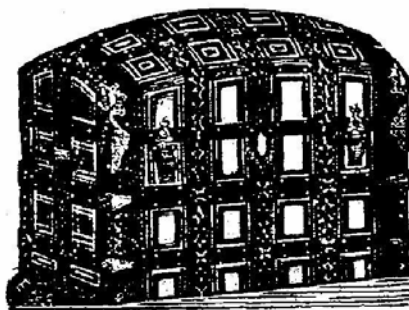
Settling, Adjusting, and Collecting Claims against Railroad Companies for Ship-  
pers and receivers, for Breakage, Loss, Damage, Overcharges, Shortage, &c., a Specialty

TELEPHONE 373.

# WICHITA TRUNK FACTORY,

HENRY HOSSFELD, Prop.

Wholesale and Retail Manufacturers and Dealers in



## TRUNKS,

Traveling Bags, Medical Cases, Shawl Straps,  
Ladies' Satchels, Pocket Books, Etc.

Trunks and Sample Cases Made to Order.




Repairing Trunks and Satchels.

125 WEST DOUGLAS AVE.

**W. Y. TEETZEL.**  
**WICHITA MARBLE WORKS,**

OFFICE 214 NORTH MAIN STREET.

**Designing of Family Monuments a  
Specialty---Call before placing  
your order elsewhere.**

 Residence 923 Cleveland

**PHELPS W H,**

NATIONAL NEEDLE CO.'S  
STANDARD NEEDLES  
FOR HAND AND MACHINE.

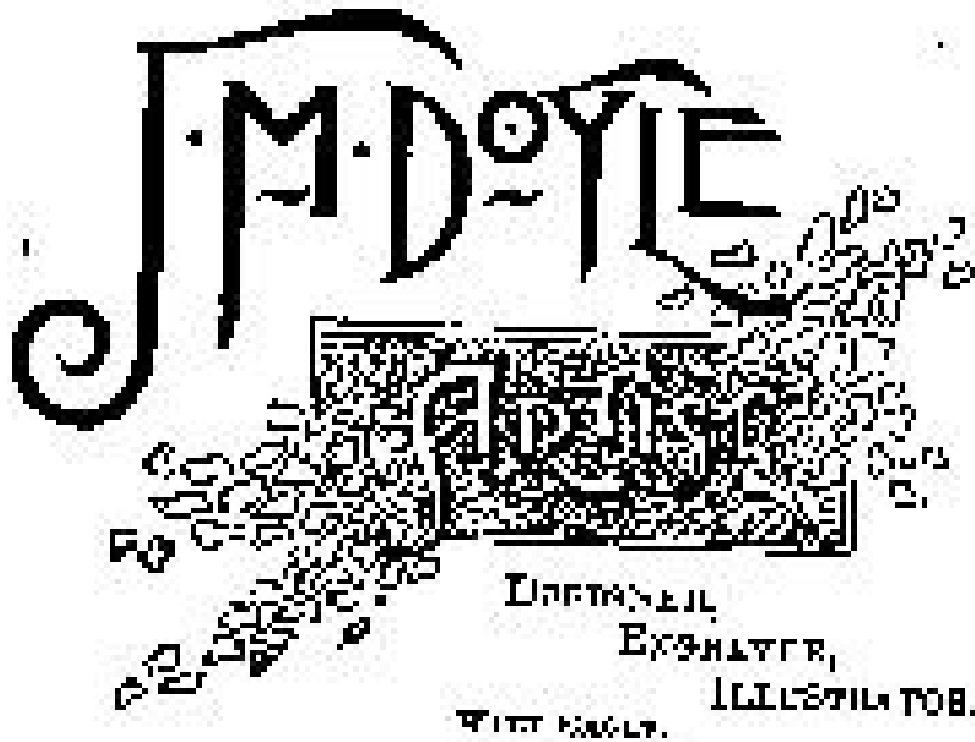
SEWING MACHINE OIL.

WM. F. NYE'S  
SUPERIOR TO EVERY OTHER.

**W. H. PHELPS,**  
**Organ and Sewing Machine Repairer.**  
**Attachments and supplies for all  
Machines.**

**ORGAN WORK A SPECIALTY.**

**623 N. MAIN ST., - WICHITA, KAN.**

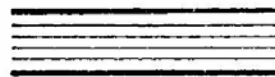


CHAS. T. CHAMPION,

—Wholesale and Retail Headquarters for—

BLANK  
MISCELLANEOUS  
SCHOOL

BOOKS



STAPLE  
OFFICE  
FINE

Stationery

PRINTERS' AND TYPEWRITERS' SUPPLIES.

118 EAST DOUGLAS AVENUE.

SCHOOL AND  
OFFICE  
SUPPLIES.

**CHAMPION'S BOOK STORE,**

118 EAST DOUGLAS AVE.

PRINTERS' AND  
TYPEWRITERS'  
SUPPLIES.

BLANK,  
MISCELLANEOUS,  
SCHOOL

**Books,**

STAPLE,  
OFFICE,  
FINE

**Stationery.**

118 EAST  
DOUGLAS  
AVE.

HAMMOCKS,  
CROQUET,  
LAWN TENNIS,

**CHAS. T. CHAMPION,**

118 EAST DOUGLAS AVE.

HEADQUARTERS  
FOR  
HOLIDAY GOODS.

LOWEST PRICES  
IN  
THE CITY.

**CHAS. T. CHAMPION,**

118 EAST DOUGLAS AVE.

LARGEST STOCK  
IN  
THE STATE.