



MIDWEST Historical and Genealogical REGISTER

*VOL. 51, No. 4
JAN-FEB-MAR, 2017
WICHITA, KS*

MIDWEST HISTORICAL & GENEALOGICAL SOCIETY, INC.

P.O. BOX 1121, WICHITA, KANSAS 67201

<http://mhgswichita.org>

info@mhgswichita.org

(316) 264-3611

ISSN 0271-8685

BOARD OF DIRECTORS

President Rex Riley president@mhgswichita.org
Vice-President Jozel Smith Eckels programs@mhgswichita.org
Secretary Twila Ackley Brown secretary@mhgswichita.org
Treasurer Jim Scharnhorst treasurer@mhgswichita.org
Librarian Julia Langel library@mhgswichita.org

COMMITTEE CHAIRS

Alert Editor Micki Wright Stephans alert@mhgswichita.org
Building and Grounds **OPEN** info@mhgswichita.org
Membership Bev Jackson members@mhgswichita.org
Publicity Francene Davis Sharp publicity@mhgswichita.org
Register Editor Ann Hathaway Boll register@mhgswichita.org
Technology Vincent Hancock tech@mhgswichita.org



The **MIDWEST HISTORICAL & GENEALOGICAL SOCIETY, INC.**

is a non-profit, educational organization

with a research library located at 1203 North Main, Wichita, Kansas.

Hours are 9:00 AM to 4:00 PM Saturdays and Tuesdays, unless otherwise notified.

Correspondence with the Society should be mailed to PO Box 1121, Wichita, KS, 67201.

Address membership dues to the attention of the Membership Chairman.

Cover drawing by Charles Sanderson

House drawing by Sharon Korst

The Register is published quarterly by the Midwest Historical & Genealogical Society, Inc. to provide information about genealogy and regional history to its members and interested parties.

Publication mailing dates: May 15, August 15, November 15, and February 15.

Back Issues: Recent issues are available for \$2.50 each, postpaid.

Membership: Includes one issue of the Register each quarter. Dues received after the publication date will receive back issues for that year with the next regular mailing.

Membership Year –

April 1 through March 31

Student (17 & under)	\$10.00 / \$20.00
Libraries	\$15.00 / \$25.00
Individuals	\$25.00 / \$40.00
Couples	\$30.00 / \$45.00
Sustaining	\$50.00

Lifetime Membership Fees

One time only

Life (single)	\$300.00
Life (couple)	\$500.00
Benefactor	\$800.00

Queries: Members may submit two queries per issue. Non-member queries are \$1.50 each or \$2.50 with a copy of the Register in which the query appears.

Submissions: Send queries and articles for publication to MHGS, Attn: Quarterly Editor. Include the date and your signature with "permission to publish."

All material for publication is subject to editing. Every effort is made to publish accurate material. Midwest Historical & Genealogical Society, Inc. and the Editor will not assume responsibility for errors on the part of the contributor. We are not responsible for publishing rights of contributed material. MHGS does not buy articles for publication.

Advertising: Ad space is sold in 2½" x 2½" block units, 12 blocks per page. Cost for a single block is \$5.00 per issue. Contact the Editor for additional information.

Library/Office Location: 1203 N. Main, Wichita, Kansas, 67203, (316) 264-3611

REGISTER

A Magazine for members and friends interested in Genealogy

Volume 51 No. 4

JAN-FEB-MAR 2017

Table Of Contents

ED. NOTE:	98
THE WICHITA WEEKLY EAGLE	99
NEW MATERIALS IN THE WICHITA PUBLIC LIBRARY	104
MARRIAGE RECORDS	108
WICHITA HISTORICAL PANEL NO. 104	111
WICHITA HISTORICAL PANEL NO. 105	112
18 TH JUDICIAL DISTRICT PROBATE INDEX	113
THE WICHITA WEEKLY EAGLE	115
NEW MATERIALS IN THE MHGS LIBRARY	121
UPCOMING MHGS EVENTS	123
INDEX	124
MHGS MEMBERSHIP APPLICATION	127
PUBLICATION ORDER FORM	128

Library/Office Location:

1203 N. Main
Wichita, Kansas 67203
(316) 264-3611

Ed. Note:

As usual, I'm late getting this issue of the *Register* out the door. I had high hopes of getting it done at the beginning of May, so much for that idea! I'll keep trying to get back on schedule, and I hope you all will continue to have patience with me.

I hope you all have renewed your MHGS membership for the 2017-2018 membership year. If not, you'll find a membership application on page 127. MHGS relies on your membership dues to cover a large percentage of our operating expenses (electricity, water, building upkeep, paper for the copier, etc.), please continue to support your MHGS library with your annual dues!

I happened to be in the library one Saturday while a man from the east coast was also at the library to get copies of his father's records from the Wichita Children's Home. Several of the "regulars" were chatting with each other about various things, including genealogy, and the man commented on how much fun we seemed to be having. That comment has really stuck with me... Our library certainly isn't the quiet, don't make noise when you turn the pages of your book kind of place, we are always sharing discoveries and asking questions of each other. I hope you will stop by some Tuesday or Saturday and join in the fun! And the next time you're in the library, be sure to ask Jim Scharnhorst about his granddaughter, she's so adorable!! Jim is so shy, though, he won't mention her unless you ask him about her.

Which reminds me of how grateful I am for the dedicated volunteers we have at the MHGS library who keep the doors open and things running smoothly. You know who you are... your generosity never ceases to amaze me! From the bottom of my heart, thank you!

Julia (and others, too) have been having lots of fun with the our new scanner at the MHGS library. If you have something (document or photo) you want to scan, bring it in! We even have flash drives we can sell you for your scanned image, if you don't have one to bring with you. We have started a Digital Collections page on our website, with digital images donated by members and images of items in the MHGS holdings. Recently we re-discovered in our holdings a collection of 106 job application forms submitted to the Regional Agricultural Credit Corporation offices in Kansas, Oklahoma, New Mexico and Colorado. They have been indexed, and are in the process of being scanned and added to the website. To check out the collection, go to the MHGS home page (<http://mhgswichita.org/wp/>) and click on the Digital Collections link on the left-hand side.

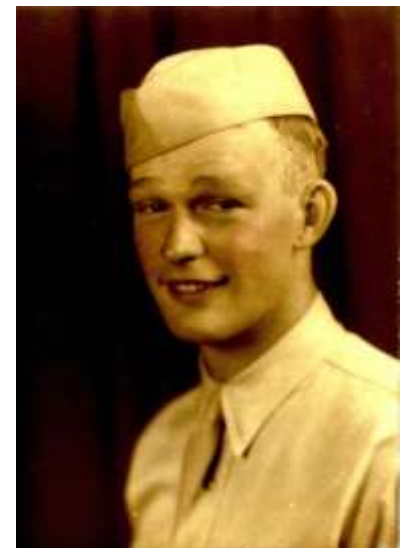
It's almost Memorial Day... a day set aside to remember those men and women who died while serving our country in the military. May we never forget their sacrifice. At the bottom of this page are photos of my mother's first husband and his final resting place in Arlington National Cemetery.

That's all I've got to say for now – see you again soon!

Ann Hathaway Boll

Register Editor

register@mhgswichita.org



The Wichita Weekly Eagle

Thursday, January 9, 1873, page 3

Column 1

CITY AND COUNTY NEWS.

See statement of First National Bank in another column.

Miss Carrie E. Green, of Emporia, is in the metropolis visiting friends.

Hays Bros. have a nice assortment of gloves, which they are selling cheap.

Choice venison was selling, by the carcass, on Monday, at six cents per pound.

J. R. Mead sold over twelve hundred dollars worth of dry hides one day last week.

A bill has been introduced in congress forming a new U. S. land district west of this.

John Bragg, at the upper end of Main street, is the shoemaker who makes such nice fits.

Wichita market will be abundantly supplied next summer with the purest quality of ice.

Choice fat humps and rounds of buffalo are selling at three cents a pound upon our streets.

The natal day of Bobby Burns, Scotland's son and immortal bard, will be celebrated in Wichita.

The market has been glutted with wild turkeys, prairie chickens and quails for the past two weeks.

There is no mistake about coal having been discovered upon the Cowskin, thirteen miles west of here.

While it was snowing so here last week heavy rains were falling throughout the southwestern states.

Mrs. Laura J. Paul has been appointed postmistress at Park City, in the place of H. C. Ramlow, resigned.

A set of new, substantial and very neat cast-iron steps have been put up in front of the First National Bank.

The county commissioners held a meeting on Monday. Bridge and other matters were up for consideration.

The keno room fine of James Dagner was, by vote of the council, Tuesday night, set at \$75 per month. "Keno."

Rev. J. F. Nessly, pastor of the M. E. Church, has been confined to his bed for several days, but is recovering slowly.

Mrs. Dr. Pillsbury, a clairvoyant physician of note, is stopping in the city. She is a graduate of an eclectic school of medicine.

Several of our contractors are interviewing those of our business men who talk of putting up permanent buildings in the spring.

At this writing we hear of but one death from epizootic in Wichita. Mr. Schnell lost a valuable young horse on last Saturday.

Hays Bros., although not making a specialty of gloves, have a splendid assortment on hand, which they are disposing of very cheap.

There has been already fourteen thousand dollars of stock pledged for the new commercial block on Main and Second streets. Good.

Mr. Camp informs us that a quarterly meeting of the United Brethren has been in progress in Eagle township, Rev. R. W. Parks, preacher in charge.

Trickey Brothers are doing their usual lively trade. They are men who make no great pretensions or show, but they command a splendid and reliable trade.

Several more cases of extreme destitution have been relieved by the ladies' benevolent society within the week. One woman, a wife and mother, was found without shoes.

Millis & Stern's patent concrete chimneys and flues are becoming very popular. They are entirely safe, while the readiness with which they can be put up makes them altogether desirable.

We are in receipt of a letter which conveys the intelligence that a railroad company, under the style and title of the Arkansas, Kansas and Colorado railroad company, will be organized in a few days. More anon.

Our fellow townsman, John M. Steele, left for Washington City on Tuesday morning, where he had been summoned as a witness in the Caldwell investigation case. He will be at home within ten days or two weeks.

Hon. A. A. Moore says he is in receipt of at least a dozen letters from different cattle men who traded with the firm of Callen, Moore Co., last

summer, and they all say that Wichita will be the objective point next season.

A letter touching the original ten-mile limit of the A., T. & S. F. R. R. will be found in another column, which will interest many of our readers. It appears that one-half of the money paid by the settler will be refunded.

Our worthy county treasurer, S. C. Johnson, informs us that until within the past few days taxes have come in very slow. The indications are that a large portion of the property will have to pay the ten per cent. penalty.

Father Felix P. Swernbergh, the priest who is to take permanent charge of the Catholic church in Wichita and other points in Southwestern Kansas, arrived here on last Friday. He appears to be a very kind and intelligent man.

Arrangements have been completed for the erection of a large commission and forwarding house near the depot. The building is to be a permanent one, built of brick and stone. Such a house was greatly needed here all last summer.

Our office was honored with a call, on Tuesday, from Col. T. J. Peter, the great railroad man of the A., T. & S. F. R. R. His faith remains unshaken in the great future of Southwestern Kansas and the Arkansas valley.

One herd of cattle, consisting of upwards of 5,000 head, leaves the gulf on the 16th of this month for Wichita. Of course they will not be driven directly through. They will reach the southern line of Indian territory about the 1st of March.

W. J. Hobson informs us that he has secured, after much difficulty, the long timers for the El Paso bridge. His lumber dealer had to visit all the big lumber mills of the northwest before he could secure lumber of the proper dimensions.

Geo. E. Harris, the enterprising merchant, tailor, soda-factory man, etc., contemplates putting up in the early spring a large and permanent brick business house. He has not yet decided upon a location, but at present thinks it will be on Douglas avenue.

The supreme court of Michigan recently decided that commissioners and road overseers are responsible for damages resulting from defective public bridges, and not the township or municipal corporations. All of this becomes interesting when we think of the Chisholm creek bridges.

Mr. Ben C. Parcells has been engaged as chief clerk of the Wichita postoffice. Mr. P. is a careful and industrious man, and has had considerable experience as a delivery clerk in a city office, and we sincerely hope that so long as his services are retained we may hear of no complaint.

In another column will be found a tabular statement of the business of the U. S. land office at Wichita for the year of 1872. It shows that over half a million dollars has been received in that time for lands. For this very interesting item the receiving officer, Col. J. C. Redfield, and his first assistant, Mr. Walker, will accept our thanks.

Dr. Owen & Medlin successfully performed the operation of amputation by taking off the foot of Simon Shope, a buffalo hunter, who was out during the last storm, and who at present is an inmate of the county poor house. The operation was necessary to the life of the patient. It was taken off just above the ankle joint. The operation was performed while the patient was under the influence of an anesthetic. He is about twenty-one years of age, and is recovering rapidly.¹

Column 2

To Our Patrons and Readers.

The law-making power of this commonwealth convenes at the state capital next Tuesday. Having been honored with the position of member in one of the co-ordinate branches of that assemblage, we take this opportunity to say good-bye to one and all for the next fifty days. The business and local departments of the EAGLE will be conducted by R. P. Murdock, a younger brother. The editorial columns will be filled partly by correspondence from the capital, and partly by contributions and by such editorial matter as the editor in charge may deem for the best interests of the paper and its subscribers. That it will be kept up to its present standard – or even a higher one – we have no doubt. At any rate from what we already know, we are satisfied that there will be no spare time or rest for us for the next fifty days. To give some idea of the work on hand, we will state that there were cast in the 25th senatorial district 9,999 votes, not counting the votes cast in the counties of Pawnee and Ford, and a light vote was polled. There are in this district twenty-four

¹ Possibly the Simon Shope who died in 1927 and is buried in Imperial, California.

counties, organized and unorganized. The district contains 22,500 square miles, or about one-fourth of the entire state of Kansas. The 25th senatorial district has a population of upwards of 80,000 people, or over one-fifth of the entire population of Kansas. There are over fifty towns and villages within this limit, and fourteen newspapers are published within its borders. From this vast district comes up petitions and requests without number for all kinds of local legislation, enabling acts and private emoluments and honors. What further wants there may be we expect to find out before we are four weeks older.

Hoping that all may be for the best – that the EAGLE may not fail to continue to satisfy, and that we may be granted wisdom to fulfill the duties devolving upon us, to the end that no mistakes or misvotes may be made, but that the best interests of this vast district may be served and conserved – we for the present drop the pencil and say adieu.

More sad news comes to us from the border. This time of the suffering and probable death of a well known and respected citizen of Sumner county. Judge Riggs, in company with his son Isaac and other parties, went out on the Medicine Lodge some three weeks since to lay out a new town. This (Tuesday) morning Hon. A. A. Moore brings us the sad intelligence that Judge Riggs and his party were overtaken by the late cold snap before they reached their destination. Several of the party were badly frozen, but more especially the judge, whose limbs were so frosted that he could not be taken back to his home in Wellington until the weather had softened. Mr. M. B. Riggs, a son residing in Florence, arrived here last night, he having received a telegram announcing the startling news, which further stated that his father could not possibly live. He left here early this morning, accompanied by a brother of his father who resides near Wichita. We hope before going to press to receive further details. Judge Riggs is an old resident of the state – at one time a member of the state senate from Morris county. He was respected by all who knew him as a man of sterling worth.²

² According to "Historical Atlas of Sumner County" published in 1883, Judge Riggs died 7 Jan 1873. He is buried in Marion County, Kansas.

Of course no one doubts that Wichita will be the great Texas cattle shipping point for the next season. But to show something of the animus of the proposition as entertained by the Texas men themselves, we quote a few lines from a letter written by Judge J. H. Stribbling³, president of the San Antonio [sic] National Bank, to J. C. Fraker, president of the First National Bank of Wichita. Judge Stribbling was here during the past season, looking after the interests of his bank and certain large dealers, and having been connected with the cattle trade for a number of years, knows whereof he speaks. The letter was dated December 21st, and written with reference to certain business matters, but winds up with the following significant sentence, "I got home all right. The drive of cattle next year will be large, and Wichita can do the greater part of the business if your people will put themselves to a little trouble and expense." In behalf of Wichita we will say her people have never failed to do their part yet, and when the time comes for action they will not be found wanting.

We would call the attention of country dealers generally, and of merchants doing business in the towns of Sumner, Cowley, Sedgwick and Butler counties in particular, to a stock of goods just opened by Caldwell & Titsworth, whose advertisement appears elsewhere. This stock is probably one of the most complete ever brought to Wichita. They make a specialty of queensware and glassware, of which articles they have much the largest stocks ever brought to this market. They will keep in store wooden and willow ware in jobbing quantities. As to groceries, fruits, etc., they will hold themselves in readiness to fill promptly all orders. The above gentlemen are substantial, accommodating, business men of that stamp that will lend importance to the wholesale trade of Wichita. Their place of business is next door to the postoffice, from which place they will deliver goods to any part of the city.

³ Judge Thomas Haile Stribbling, b. 16 June 1826 Pickens County, AL, d. 25 May 1873, San Antonio, Bexar County, TX. Married Eleanor Alexander in 1855. "The Stribblings were close friends of banker and philanthropist George W. Brackenridge who organized the San Antonio National Bank in 1866. Judge Stribbling, one of the founding members, served as director and vice president of the bank until his death. His widow, Eleanor, succeeded him as director and became among the first women in the United States to hold such a position." (<https://tshaonline.org/handbook/online/articles/fsttri>)

Then came M. R. Moser, he of the big wheel and horse shoe, which a sleigh nicely rigged, and horses gaily caparisoned with harness and bells, and invited we 'uns to take a seat. We took a seat, but before we reached the upper end of Main street we wished a thousand times we hadn't. In fact we wished so every time we saw a snow-ball coming, and there could not have been less than then thousand of these eyes-blinding, head-ringing missiles heaved at our turn-out. It looked like a put-up job. Eyes, ears, nose, mouth and clothes were filled with snow. Melting snow trickled down our backs and into our boots. Even little imps of boys yelled and threw snow. We went home, changed our clothes, and then entered a suit against the aforesaid blacksmith for damages.

The dog nuisance has not been abated yet to any satisfactory extent. Thirty, forty, maybe a hundred, but the dust last week from the effects of the soothing presence of our innocent policemen, but no one would believe from the number left running on the street that any such number had gone to the happy hunting ground. With mad dogs in several counties in the state, it behooves our authorities to take hold of this matter. Dr. Hendrickson was bitten by a ferocious and ugly dog last Monday, on Maine [sic] street. We know of two other instances in which people were attacked. Issue your proclamation, Mr. Mayor, and rid the city of this nuisance before some one is bit, and before rabies has attacked a thousand of the worthless curs hereabouts.

This is a great country for "spells o' weather." Last Friday a warm sun reduced our snow to slush. A cold moon that night converted it into a sheet of glistening ice. Saturday the beautiful snow fell in great, soft flakes throughout the day to a depth of five or six inches. Saturday night old boreas picked up his bellows and such a flurry as he kicked up we never before witnessed. The snow that had been coming quietly down all day was suddenly elevated in the air and sent flying and whistling into eddies and drifts in all directions. The mail train due here at 11:15 p. m. did not arrive until about noon on Sunday, and then was hauled in by two engines which, from their looks, must have bumped into a great number of snow banks.

The Wichita Liberal Fraternity held its first meeting at the school house last Thursday evening.

The exercises, though not complete, were good, and its members are zealous and determined to make it a success, believing that it is a school of free thought so much needed in our country, and cordially invite all who are not afraid to reason and struggle in the solid ranks of truth to unite with them. The lecture this evening will be delivered by Q. A. Smith. Subject, "Fourteen excuses for dishonesty in America."

EDITOR EAGLE: Would you please announce in your next issue that the Catholics of this place have secured a resident priest and will henceforth have services on the first Sunday of every month, at 10½ a. m. and 7 p. m., at their church building.

REV. FELIX P. SWERNBERGH,
Catholic Pastor Wichita and S. W. Kansas.

Column 3

Since our last issue the Odd Fellows' Hall has been dedicated, and the officers for the present year were duly installed. The installation and dedicatory services were conducted by Capt. Shannon, of Augusta, grand master of ceremonies, and L. F. Cotton, grand marshal. The following gentlemen were installed: Noble grand, B. C. Parcells; vice grand, J. M. Steele; worthy secretary, W. J. Hobson; permanent secretary, H. W. Vigus; treasurer, H. Bolte; and Louis Lippe, N. Warren and Chas. Eckhart, wardens.

We have two well organized lodges, one Odd Fellows and one Masonic, both in good working order. The great inconvenience these orders have been laboring under for some time and the need of a proper place to meet has been overcome, and they now have nice and commodious rooms for meetings.

A Wichita man spent three-quarters of an hour the other evening in trying to pick up a piece of moonshine from his doorstep, which he fondly fancied to be a copy of the EAGLE. His afflicted wife finally came out, brought him to consciousness by the aid of a loose picket fence, and steadied his tottering steps into the house. -
Topeka Commonwealth.

That's too thin. We never sat for the picture. The EAGLE, in the first place, is too bright a sheet to be mistaken, even by a drunken man, for mere moonshine, and in the second place our dear afflicted Wichita wives - dear angels - would let their

epizooted husbands grasp at moonshine a month ere they would consent to expose their delicate limbs, protected by the daintiest muslin only, in pale, cold moonlight, in hunting up a vulgar loose picket fence. P'shaw! What coarse people Topeka folks are anyway!

Rev. George Balcom, of New York, is preaching a series of sermons in Wichita. His work is upon a purely evangelical basis, although he informs us that he was originally a Baptist. We heard him at the M. E. church on Monday night, and we must confess that he impressed us as being not only exceedingly eccentric, but at times extravagant and gross. While we doubt neither his honesty or earnestness as a christian, nor that his systematic oddity will attract crowds every night, we do doubt his success as an instrument in evangelizing Wichita. But whether our conclusions be hasty or immature or not, we wish him and his christian co-workers an abundant harvest.

The directors of the Wichita bridge company held a meeting last Saturday, at which time a report of the finances and condition of the company was made to the secretary of the state, as the law provides. The bridge is yet about \$5,000 in debt. The earnings of the bridge in the past few weeks have not been sufficient to more than pay the toll-keepers, let alone any interest on the investment. It was ordered that the superintendent put down four thousand feet of new floor, of two-inch oak or walnut.

Wm. Mathewson's train arrived on Saturday, from Ft. Sill, loaded with hides and furs consigned to J. R. Mead. The Indians are all quiet and all upon their designated reservations. Ice ten inches thick was being put up at Ft. Sill, something unknown in the history of the country before. Heretofore they have been compelled to go without ice at the fort, which shows conclusively that the cold snap of ten days ago was unprecedented.

Both the senate and house of representatives have passed a bill reinstating the old rates of postage on seeds, bulbs, roots, plants, etc., for which there has been so much clamor of late in consequence of the rulings of the postmaster general. The amendment passed permits the passage of four-pound packages through the mails, as formerly, at

the post rate of two cents for four ounces. The act is to take effect immediately.

We must say it. The sign on the First National bank is a disgrace. It is good enough for the kind, but it is unsightly, awkwardly set, and mars the architectural effect of both fronts. Come, Mr. Fraker, it won't do. The simple word "Bank," in large gold letters on the corner, or two of "First National Bank," one for each side. The present affair makes us fidgety.

We hear it hinted that our eminently popular sheriff, Johnny Meagher, and Miss Jennie Fitzpatrick, will, as one, take possession of the new cottage. We wish our young friends a long and happy life.

"Domestic happiness, thou only bliss
Of paradise that has survived the fall."

MARRIED.

January 1st, by Rev. J. F. Nessly, at the M. E. church, Mr. Wm. H. Palmer to Miss Zureah A. French, all of Wichita.

January 1st, by the same, at the parsonage, Mr. John⁴ Foster to Miss Flora M. Scott, all of Sedgwick county.

January 1st, by the same, in Butler county, W. H. Campbell to Miss Armilda Boyd, both of Butler county⁵.

On the 27th ult., by Mr. Camp, esq., at his residence in Eagle township, Mr. Manama to Miss Belle Bunton, all of Eagle township⁶.

On the evening of the 2d inst., by the Rev. Mr. Ashley, of Sedgwick county, at the house of the bride's father, Mr. V. S. Wah to Miss S. J. Webb, both of Eagle township⁷.

⁴James Foster, according to the marriage license.

⁵William H. H. Campbell (b. Apr 1842 in VA, d. May 1907) married Armilda Willis Boyd (b. July 1854 in KY, d. 25 Nov 1921). Both are buried in Fairmount Cemetery, Denver, Colorado.

⁶James Bruce Manamee (b. 1846 in PA, d. 1930) married Belle S Buntin or Bunton (b. 3 June 1854 in KY, d. 9 Jan 1922) on 27 December 1872. They had no children. Both are buried in Mt. Hope Cemetery, Sedgwick County.

⁷Van S. Waugh (b. 12 Nov 1843 in IN, d. 7 Aug 1904) married Sarah J. Webb (b. 31 Dec 1838 in MI, d. 22 Dec 1924) on 2 January 1873. Both are buried in Springfield Cemetery, Baca County, Colorado.

NEW MATERIALS IN THE WICHITA PUBLIC LIBRARY

GENEALOGY COLLECTION

October through December, 2016

Compiled by Michelle Enke, Manager of the Wulfmeyer Genealogy Center

- 1880 Knox County, Kentucky, Census. (R 976.9125 JON)
- Abstracts of Deeds, Nelson County, Kentucky. Deed books 1-7, Approximate Years 1785-1808:
Completely Indexed, Including Slaves, Blacks and Servants. (R 976.9495 ABS)
- Abstracts of Wills, 1785-1820, Nelson County, Kentucky. (R 976.9495 ABS)
- African American Resources at the New England Historic Genealogical Society: a Selected Bibliography. (R 929.1 AFR)
- African Americans in South Texas History. (R 976.44 AFR)
- Army Lineage Book. (R 355 UNI Vol. 2)
- Bautismos del Sagrario Metropolitano Catedral: Monterrey, Nuevo Leon, Mexico, 1667-1751.
(R 972.13 NIC Vol. 1-4)
- Benson, Hubbardton and Sudbury Cemetery Inscriptions, Rutland County, Vermont. (R 974.37 JEN)
- Biographical Record of De Kalb County, Illinois. (R 977.328 BIO)
- Black Hawk County, Iowa Cemeteries: Miscellaneous Cemeteries. (R 977.737 BLA)
- Black Hawk County, Iowa Probate Records, 1852-1904. (R 977.737 BLA Vol. 1-6)
- Borderlands Town in Transition: Laredo, 1755-1870. (R 976.4462 HIN)
- Brandon Cemetery Inscriptions Rutland County, Vermont. (R 974.37 JEN)
- Bridwell Family in America. (R 929.2 BRIDWELL)
- Bullitt County [Kentucky] Cemeteries. (R 976.9453 SAB Vol. 1-4)
- Bullitt County, Kentucky: History, Families. (R 976.9453 BUL)
- Bullitt County Kentucky Marriages, 1797-1876. (R 976.9453 LIN)
- Canary Islands Migration to Louisiana, 1778-1783: the History and Passenger Lists of the Islenos Volunteer Recruits and Their Families. (R 976.3 VIL)
- Cape Cod: Its People and Their History. (R 974.49 KIT)
- Castleton Cemetery Inscriptions, Rutland County, Vermont. (R 974.37 JEN)
- Cemeteries of Franklin County, Virginia. (R 974.755 CEM)
- Cemetery Records of Franklin County, Virginia. (R 975.568 CEM)
- Cemetery Records, Town of Fort Ann, Washington County, New York. (R 974.749 MOO)
- Cemetery Records, Town of Hampton, Washington County, New York. (R 974.749 MOO)
- Cemetery Records, Town of Whitehall, Washington County, New York. (R 974.749 MOO)
- Central Kentucky: Bullitt, Marion, Nelson, Spencer, and Washington Counties. (R 976.94 HIB)
- Chittenden, Mendon, Pittsfield and Sherburne Cemetery Inscriptions, Rutland County, Vermont.
(R 974.37 JEN)
- Choctaw by Blood Enrollment Cards, 1898-1914. (R 970.004 BOW Vol. 2-5)
- Christian Spears: Kentucky Pioneer, 1755-1811. (R F GILLESPIE L.)
- Civil War General and Indian Fighter James M. Williams: Leader of the 1st Kansas Colored Volunteer Infantry and the 8th U.S. Cavalry. (R 355.009 CIV)
- Civil War in the Southwest: Recollections of the Sibley Brigade. (R 973.782 CIV)
- Clarendon and Shrewsbury Cemetery Inscriptions, Rutland County Vermont. (R 974.37 JEN)
- Colonial Natchitoches: a Creole Community on the Louisiana-Texas Frontier. (R 976.365 BUR)
- Confederate Records from the Elbert County, Georgia, Court of Ordinary: 1890-1932.
(R 975.8163 POR)
- Danby and Mount Tabor Cemetery Inscriptions, Rutland County, Vermont. (R 974.37 JEN)
- Death Notices from Washington County, New York Newspapers, 1799-1880. (R 974.749 JAC)

- Derry-Londonderry, Gateway to a New World: the Story of Emigration from the Foyle by Sail and Steam. (R 941.6 MIT)
- Descendants of Edward Perkins of New Haven, Conn. (R 929.2 PERKINS)
- Descendants of Rev. Thomas Hooker, Hartford, Connecticut, 1586-1908: Being an Account of What is Known of Rev. Thomas Hooker's Family in England. (R 929.2 HOOKER)
- Documentos Para la Historia de Sonora. (R 972.02 DOC V.1)
- Domínguez-Escalante Journal: Their Expedition Through Colorado, Utah, Arizona, and New Mexico in 1776. (R 978.9 VEL)
- Early Homesteads of Pomfret and Hampton. (R 974.645 GRI)
- Early History of Boston: Aspinwall Notarial Records from 1644 to 1651. (R 974.46 ASP)
- Early New England Families: 1641-1700, Volume 1. (R 974 WIL V.1)
- Early Osborne Alley Families: On the Clinch & New Rivers. (R 929.2 OSBORNE)
- Early Vital Records of Minot, Maine. (R 974.182 AND)
- Elements of Genealogical Analysis. (R 929.1 AND)
- English Origin of Six Early Colonists by the Name of Perkins. (R 929.2 PERKINS)
- Fair Haven and West Haven Cemetery Inscriptions, Rutland County, Vermont. (R 974.37 JEN)
- Families Directly Descended from All the Royal Families in Europe (495 to 1932) and Mayflower Descendants: Bound with Supplement. (R 974.482 RIX)
- Family History of Alma Iona, Mabel Nancy, and Lloyd Remington. (R 929.2 REMINGTON)
- Family Records: or, Genealogies of the First Settlers of Passaic Valley (and Vicinity) Above Chatham. (R 974.923 LIT)
- Fat Mutton and Liberty of Conscience: Society in Rhode Island, 1636-1690. (R 974.5 BRI)
- First Letter From New Spain: the Lost Petition of Cortés and His Company, June 20, 1519. (R 972.02 SCH)
- For the Children: Pursuing Religious and Political Freedoms: the Remarkable Life Journeys of Peter Epp and His Children Agnetha and Johann. (R 929.2 EPPS)
- Fulton County, Kentucky, Newspaper Abstracts, 1841-1907. (R 976.999 WIL Vol. 1-18)
- God Help the Irish!: the History of the Irish Brigade. (R 973.741 TUC)
- Great Plains Journal [microform]. (V. 14-23)
- Great Migration Directory: Immigrants to New England, 1620-1640: a Concise Compendium. (R 974 AND)
- Guide to Genealogical Writing: How to Write and Publish Your Family History. (R 929.1 STR)
- Guide to Massachusetts Public Records: Parishes, Towns, and Counties. (R 974.4 WRI)
- Guide to Tracing Your Clare Ancestors. (R 941.9 SMITH B)
- Guide to Tracing Your Cork Ancestors. (R 941.9 MAC C)
- Guide to Tracing Your Donegal Ancestors. (R 941.6 MEE)
- Henry County, Kentucky Cemeteries. (R 976.9385 MEE)
- Hickman County, Kentucky Will Books, 1822-1859. (R 976.998 WIL Vol. 1-9)
- Hickok Genealogy: Descendants of William Hickocks of Farmington, Connecticut, with Ancestry of Charles Nelson Hickok. (R 929.2 HICKCOX)
- Historical Gazetteer of Tioga County, New York, 1785-1888. (R 974.777 GAY)
- History and Antiquities of Every Town in Massachusetts. (R 974.4 BAR)
- History of Black Hawk County, Iowa, and Its People. (R 977.737 HAR V.2)
- History of Elizabeth, New Jersey: Including the Early History of Union County. (R 974.936 HAT)
- History of Morris County, New Jersey: with Illustrations, and Biographical Sketches of Prominent Citizens and Pioneers. (R 974.974 HIS)
- History of Rutland County, Vermont: with Illustrations and Biographical Sketches of Some of Its Prominent Men and Pioneers. (R 974.37 SMITH H)
- History of the Lutheran Church in Virginia and East Tennessee. (R 284.1 CAS)

WPL New Materials, continued

- History of the New Salem Baptist Church, Nelson County, Kentucky, 1801-1901. (R 976.9495 CAR)
- History of the Town of East Hampton, N.Y. (R 974.725 HED)
- History of the Town of Poultney, Vermont, from Its Settlement to the Year 1875: With Family and Biographical Sketches and Incidents. (R 974.37 JOS)
- History of Union County, New Jersey. (R 974.936 HIS Vol. 1-2)
- History of Wyoming County, N.Y. (R 974.793 HIS)
- Horse Sweat and Powder Smoke: the First Texas Cavalry in the Civil War. (R 973.7464 MAC G)
- In the Saddle with the Texans: Day-by-day with Parsons's Cavalry Brigade, 1862-1865. (R 973.7464 IN)
- Index of Anne Arundel County, Maryland, Death Certificates, 1840-1920. (R 975.255 SIM)
- Indianola: the Mother of Western Texas. (R 976.41214 MAL)
- Jayhawker. (R 378.781 JAY 1965 V.77)
- Jefferson County, Georgia Inferior Court Minutes: July 1820 - September 1835. (R 975.8663 POR)
- John and Prudence (Emrey) Lloyd, Their Descendants, and Some Allied Families: Allen, Cowling, Embree, Gilbert, Kelly, McCracken, McGee, Northern, O'Rear, Slaughter, Stewart, Tarrant, Tankersley. (R 929.2 LLOYD)
- Journal of American History [microform]. (Vol. 1-28, 49, 60-76)
- Junction City High School (Yearbook). (R 378.781 JUN 1936 & 1939)
- Kansas State University: a Walk Through the Campus. (R 741.973 FIS)
- Kansas State University: Royal Purple Yearbook. (R 378.781 KAN 1954, 1955, 1956, 1957)
- Kentucky: a History of the State, Embracing a Concise Account of the Origin and Development of the Virginia Colony ... (R 976.9 PER Vol. 3-8)
- Knox County, Kentucky Marriage Books, 1800-1900. (R 976.9125 KNO Vol. 1-7 BOOK A-T)
- La Fundacion De Cadereyta, 12 Marzo 1637. (R 972.13 GAM)
- Maine families in 1790. (R 974.1 MAI Vol. 9-11)
- Marriage Notices from Steuben County, New York, Newspapers, 1797-1884. (R 974.783 JAC)
- Mayflower Heritage: a Family Record of the Growth of Anglo-American Partnership. (R 974 WIN)
- Memories of Arlington, Vermont. (R 974.38 FIS)
- Middletown Springs and Ira Cemetery Inscriptions, Rutland County, Vermont. (R 974.37 JEN)
- Midwest Quarterly [microfilm]. (V. 11-32, 1969-1991 Index)
- My Somerset County Heritage [Coughenour Family]. (R 974.879 COU)
- Nantucket: the Life of an Island. (R 974.497 HOY)
- Negro History Bulletin [microform]. (V. 17-46, 1953-1983)
- Nelson County: a Portrait of the Civil War. (R 976.9495 HIB)
- Nelson County, Kentucky Cemeteries. (R 976.9495 NEL Vol. 1-4)
- Nelson County, Kentucky, Marriages, Bonds, Consents, and Ministers Returns, 1785-1885. (R 976.9495 OCK Vol. 1-7)
- New England Marriages Prior to 1700. (R 974 TOR Vol. 1-3)
- Oakwood Cemetery Readings and Genealogical Helper, New Baltimore, Macomb County, Michigan. (R 977.439 OAK)
- Parnassus [Yearbook]. (R 378.781 PAR 1953)
- Passenger and Immigration Lists Index: a Guide to Published Records. (R 929.1 P2866 2017)
- Pawlet Cemetery Inscriptions, Rutland County, Vermont. (R 974.37 JEN)
- People of Derry City, 1921: Extracted From the Derry Almanac and Directory. (R 941.6 MIT)
- Place Names of County Derry. (R 941.6 MIT)
- Pittsford and Proctor Cemetery Inscriptions, Rutland County, Vermont. (R 974.37 JEN)
- Polignac's Texas Brigade. (R 973.7464 BAR)
- Poultney Cemetery Inscriptions, Rutland County, Vermont. (R 974.37 JEN)
- Ranch Life in Hidalgo County After 1850 [Texas]. (R 976.4492 RAM)

- Rebel Brothers: the Civil War Letters of the Truehearts. (R 973.782 TRU)
Revolution on the Upper Ohio, 1775-1777. (R 973.3 REV)
Rosters of Tejano Patriots of the American Revolution 1776-1783. (R 976.4 VIL)
Rutland Cemetery Inscriptions, Rutland County, Vermont. (R 974.37 JEN)
Rutland County, Vermont Probate Extracts, Rutland District. (R 974.37 JEN)
San Agustin Parish of Laredo: Marriage Book I, 1790-1857 [Texas]. (R 976.4462 BRO V.1)
Save the Young: the 1691 Expedition of Captain Martinez to Rescue the Last Survivors of the
Massacre at Fort St. Louis, Texas. (R 976.4 SAV)
Seeing the Elephant: the Many Voices of the Oregon Trail. (R 978 HUN)
Spencer County, Kentucky, Cemeteries: Then and Now. (R 976.9455 BUR Vol. 1-3)
Stones and Bones of New England: a Guide to Unusual, Historic, and Otherwise Notable Cemeteries.
(R 974 ROG)
Su Vida y Su Espiritu: Webb County Family Histories. (R 976.4462 SU V. 1)
Tejano Legacy: Rancheros and Settlers in South Texas, 1734-1900. (R 976.44 ALO)
Tempest Yearbook. (R 373.781 TEM 1966-1970)
Their Lives, Their Wills: Women in the Borderlands, 1750-1846. (R 305.409 POR)
Tinmouth Cemetery Inscriptions, Rutland County, Vermont. (R 974.37 JEN)
Tracing Derry-Londonderry Roots. (R 941.6 MIT)
U.S.S. Samuel N. Moore [Cruise Book]. (R 359.3254 SAM)
Vermont Families in 1791. (R 974.3 VER V.1)
Viola Kansas: a Journey Thru Time. (R 978.186 VIO)
Virginia Quarterly Review [microform]. (Vol. 29-40, 49-61 (Index))
Vital Records of Alna, Maine. (R 974.157 GRO)
Vital Records of Castine, Maine. (R 974.145 WIC)
Vital Records of Thomaston, Maine. (R 974.153 GRO)
Vital Records of Warren, Maine. (R 974.153 GRO)
Vital Records of Woolwich, Maine. (33278201977140)
Wallingford and Mount Holly Cemetery Inscriptions, Rutland County, Vermont. (R 974.37 JEN)
War in the West: Pea Ridge and Prairie Grove. (R 973.732 SHE)
Washington County, New York: Its History to the Close of the Nineteenth Century.
(R 976.9493 STO)
Wells Cemetery Inscriptions, Rutland County, Vermont. (R 974.37 JEN)
West Rutland Cemetery Inscriptions, Rutland County, Vermont. (R 974.37 JEN)
Western Abenakis of Vermont, 1600-1800: War, Migration, and the Survival of an Indian People.
(R 974.3 CAL)
Wichita High School East: Echoes Yearbook. (R 378.781 WIC 1963)
Wichita High School North: Tower Yearbook. (R 378.781 WIC 1986)
Wichita High School South: Sceptre Yearbook. (R 373.781 WIC 1986, 1988)
Williams Families of New Jersey: Descendants of Matthew Williams of Wethersfield, Connecticut.
(R 929.2 WILLIAMS)
Williams Genealogy: Matthew, Thomas, Miles, and Swain: 1623-2003. (R 929.2 WILLIAMS)
Winthrop Fleet of 1630: an Account of the Vessels, the Voyage, the Passengers, and Their English
Homes From Original Authorities. (R 974.4 BAN)
Yankee Division in the First World War: in the Highest Tradition. (R 940.412 SHA)
Yo Solo: the Battle Journal of Bernardo de Gálvez During the American Revolution.
(R 975.999 GAL)
Zapata County Roots Revisited [Texas]. (R 976.4483 FIS)





MARRIAGE RECORDS



Sedgwick County, KS, Book M

<u>Page</u>	<u>Groom/Bride</u>	<u>Residence</u>	<u>Age</u>	<u>Appl. Date</u>	<u>Marriage Date</u>
M601	Barr, Paul Dean	Wichita, KS	21		
	Hill, Ada May	Wichita, KS	18	31 Dec	02 Jan 1910
M601	Huff, Wilbur Ernest	Wichita, KS	26		
	Babb, Nellie T.	Wichita, KS	20	31 Dec	31 Dec 1909
M602	Johnson, John J.	Harper, KS	28		
	Oliver, Josie	Harper, KS	28	31 Dec	31 Dec 1909
M602	Resing, Dale A.	Wichita, KS	26		
	Adams, Ethyl R.	Wichita, KS	29	31 Dec	01 Jan 1910
M603	Lane, Logan J.	Caldwell, KS	33		
	Arrington(tion), Maud	Wichita, KS	22	04 Jan	04 Jan 1909
M603	Leusch, Rudolph	Wichita, KS	36		
	Cobble, Mame E.	Wichita, KS	23	03 Jan	03 Jan 1909
M604	McArthur, Charles N.	Custer, IL	23		
	Ruthrauff, Lura	Wichita, KS	23	04 Jan	04 Jan 1909
M604	Rogers, Charlie	El Dorado, KS	25		
	Phillips, Beulah	El Dorado, KS	19	04 Jan	04 Jan 1909
M605	Hatfield, Rodolph	Wichita, KS	55		
	Morehead, Allie M.	Wichita, KS	42	04 Jan	04 Jan 1909
M605	Talbott, Clifford Allin	Kiowa, KS	29		
	Ledbetter, Rebecca Alice	Peabody, KS	26	04 Jan	04 Jan 1909
M606	Lewis, John	Valley Center, KS	30		
	Thompson, Mura Churchill	Valley Center, KS	22	04 Jan	05 Jan 1910
M606	Napolian, H.N.	Wichita, KS	30		
	Rush, Evelyn A.	Maize, KS	18	05 Jan	09 Jan 1910
M607	Hurt, John L.	Derby, KS	24		
	Smith, Jennie C.	Derby, KS	19	05 Jan	05 Jan 1910
M607	Mullenneix, Earl	Wichita, KS	19		
	Clark, Anna	Wichita, KS	19	05 Jan	05 Jan 1910
M608	Hurt, Willie	Wichita, KS	23		
	Patterson, Nora	Wichita, KS	17	06 Jan	06 Jan 1910
M608	Martin, Loyal M.	Newkirk, OK	23		
	Bunnell, Bess L.	Newkirk, OK	18	05 Jan	05 Jan 1910
M609	Beal, Lawrince	Wichita, KS	21		
	Glass, Ethel	Wichita, KS	20	06 Jan	06 Jan 1910
M609	Sheldon, Jerome P.	Marion, KS	70		
	Berdine, Elenora	El Paso, TX	50	06 Jan	06 Jan 1910
M610	Elkouri, Ed	Wichita, KS	29		
	Farha, Zaku	Wichita, KS	18	07 Jan	09 Jan 1910
M610	Eshom, Charles E.	Wichita, KS	62		
	Higgins, Mary E.	Wichita, KS	44	08 Jan	09 Jan 1910
M611	Colegate, Nathen(than)	Kansas City, MO	35		
	Evans, Daisy L.	Kansas City, MO	29	08 Jan	11 Jan 1910
M611	Kolb, Clarence C.	Wichita, KS	27		
	Harris, Mary M.	Wichita, KS	26	08 Jan	08 Jan 1910
M612	Crill, Charles A.	Boise City, OK	36		
	Fender, Nancy E.	Wichita, KS	27	08 Jan	08 Jan 1910
M612	Walthall, Clinton B.	Wichita, KS	21		
	Rich, Marie	Wichita, KS	20	08 Jan	09 Jan 1910

Marriage Records, continued

<u>Page</u>	<u>Groom/Bride</u>	<u>Residence</u>	<u>Age</u>	<u>Appl. Date</u>	<u>Marriage Date</u>
M613	Frederiksen, Thomas J.	Wichita, KS	23		
	Runyon, Myrtle	Wichita, KS	24	08 Jan	08 Jan 1910
M613	Hermes, Ben	Andale, KS	19		
	Vedder, Leona	Andale, KS	20	08 Jan	11 Jan 1910
M614	Bishop, James	Wichita, KS	55		
	Pulson, Elizabeth	Wichita, KS	54	10 Jan	10 Jan 1910
M614	Raple, Martin	Mt. Hope, KS	24		
	Philips(Ilips), Anna	Colwich, KS	26	10 Jan	25 Jan 1910
M615	Kampling, Joe	Garden Plain, KS	24		
	Rausch, Frances	Andale, KS	23	10 Jan	09 Feb 1910
M615	Pauly, Benedict	Goddard, KS	24		
	Villes, Anna	Andale, KS	21	10 Jan	25 Jan 1910
M616	Harmon, J.B.	Wichita, KS	38		
	West, Viole	Stillwater, OK	25	12 Jan	12 Jan 1910
M616	Taylor, Marion	Wichita, KS	39		
	Bell, Catherine	Wichita, KS	25	12 Jan	12 Jan 1910
M617	Gresl, John	Andale, KS	26		
	Eck, Anna	St. Louis, MO	23	13 Jan	01 Feb 1910
M617	Way, Howard S.	Walters, OK	28		
	Norton, Olive	Wichita, KS	24	12 Jan	13 Jan 1910
M618	Gutshenritter(sch..), Anton O.	Colwich, KS	24		
	Schneider, Lillie (Maria Teresa)	Andale, KS	20	14 Jan	01 Feb 1910
M618	Wreath, Lew Pollard	Guthrie, OK	22		
	O'Meara, Clara	Guthrie, OK	18	15 Jan	16 Jan 1910
M619	Lambe, Henry P.	Wellington, KS	25		
	Shirlie, Ethel	Wellington, KS	23	15 Jan	15 Jan 1910
M619	Stevens, Thomas R.	Wichita, KS	21		
	Wake, Pearl	Wichita, KS	18	15 Jan	15 Jan 1910
M620	Barton, Albert D.	Wichita, KS	23		
	Benedict, Ollie	Wichita, KS	18	17 Jan	17 Jan 1910
M620	Bechtel, Elzie	Clearwater, KS	26		
	Deck, Mary	Wichita, KS	23	15 Jan	15 Jan 1910
M621	Criss, Grafton	Wichita, KS	26		
	Martin, Rose	Wichita, KS	26	17 Jan	17 Jan 1910
M621	Davidson, Clark K.	Goddard, KS	28		
	Holm, Florence H.	Goddard, KS	26	17 Jan	19 Jan 1910
M622	Hahn, Ulysses S.	Kingsdown, KS	38		
	Simes, Mary Louise	Clinton, MO	37	18 Jan	18 Jan 1910
M622	Lindsay, Nimrod	Wichita, KS	23		
	Whitaker, Izola	Wichita, KS	20	17 Jan	17 Jan 1910
M623	Dodson, J.	Chicago, IL	30		
	Rowles, Sallie	Wichita, KS	26	18 Jan	18 Jan 1910
M623	Payne, J.H.	Glazier, TX	31		
	Wright, Lillie	Nottingham, MO	19	18 Jan	18 Jan 1910
M624	Creson, Frank A.	Valley Center, KS	23		
	Williams, Lizzie	Valley Center, KS	18	18 Jan	19 Jan 1910
M624	Mann, Robert P.	Wichita, KS	38		
	Campbell, Emma H.	Wichita, KS	37	19 Jan	19 Jan 1910
M625	Towers, William	Salina, KS	36		
	Johnson, Amanda	Hutchinson, KS	31	19 Jan	19 Jan 1910
M625	Wisner, Grover C.	Wichita, KS	24		
	Porter, Edith	Wichita, KS	27	19 Jan	19 Jan 1910
M626	Ericsson, John G.	Latham, KS	23		
	Pirtle, Eva Willmurth	El Dorado, KS	18	19 Jan	19 Jan 1910

Marriage Records, continued

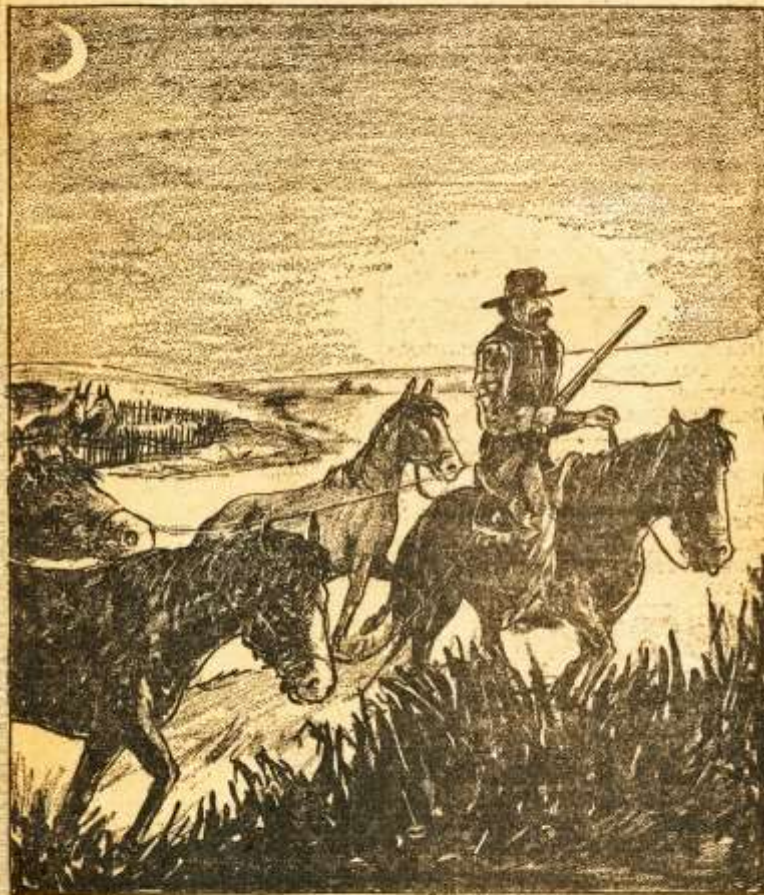
<u>Page</u>	<u>Groom/Bride</u>	<u>Residence</u>	<u>Age</u>	<u>Appl. Date</u>	<u>Marriage Date</u>
M626	Maixner, Wencil	Benton, KS	24		
	Vachal, Carrie	Benton, KS	22	20 Jan	20 Jan 1910
M627	Brown, Fred H.	Greensburg, KS	21		
	Cornette, Dorthea	Newton, KS	20	20 Jan	20 Jan 1910
M627	English, C.M.	Mulvane, KS	50		
	McGee, Maggie	Wichita, KS	39	20 Jan	20 Jan 1910
M628	Boden, Walter	Woodland Park, CO	26		
	Edge, May	Lebanon, MO	25	21 Jan	21 Jan 1910
M628	Williams, Charles N.	Wichita, KS	58		
	Thompson, Margaret	Conway Spgs, KS	50	21 Jan	21 Jan 1910
M629	Nichols, George M.	Wichita, KS	27		
	Sarver, Lena A.	Wichita, KS	20	22 Jan	23 Jan 1910
M629	Rogers, Carl C.	Wichita, KS	23		
	Davis, Minnie	Wichita, KS	24	24 Jan	24 Jan 1910
M630	Shively, William R.	Wichita, KS	23		
	Austin, Mary E.	Wichita, KS	23	24 Jan	24 Jan 1910
M630	Wilson, Roy	Hennessey, OK	22		
	Mathews, Lena	Hennessey, OK	19	25 Jan	25 Jan 1910
M631	Pinnick, Harry W.	San Antonio, TX	26		
	Bradshaw, Adeliene R.	Wichita, KS	21	26 Jan	26 Jan 1910
M631	Surtees, Keith L.	Colwich, KS	20		
	Mans, Katie M.	Colwich, KS	18	25 Jan	25 Jan 1910
M632	Adamson, Alta C.	Sedgwick, KS	26		
	Morris, Ethel Faye	Wichita, KS	20	26 Jan	26 Jan 1910
M632	Madigan, Thomas J.	Wichita, KS	25		
	Liston, Elizabeth J.	Columbus, OH	23	26 Jan	27 Jan 1910
M633	Conner, Clifford	Wichita, KS	34		
	Pulling, Maggie	Wichita, KS	23	28 Jan	
M633	Shreve, Guy Gerald	El Dorado, KS	20		
	McCulloch, Mary Estella	El Dorado, KS	19	26 Jan	26 Jan 1910
M634	Albright, Edward R.	Mulvane, KS	21		
	Whitted, Eva G.	Derby, KS	22	28 Jan	02 Feb 1910
M634	Sherrick, Walter N.	Wichita, KS	20		
	Austin, Christine	Wichita, KS	20	29 Jan	29 Jan 1910
M635	Ojile, Farris	Wichita, KS	24		
	Matter, Zaka	Wichita, KS	19	29 Jan	30 Jan 1910
M635	Sampsell, Richard L.	Wichita, KS	35		
	Walters, Leonora F.	Wichita, KS	22	29 Jan	29 Jan 1910
M636	Moody, Charles H.	Cantonment, OK	38		
	Carson, Coral Mae	Cantonment, OK	25	29 Jan	29 Jan 1910
M636	Whitsitt, Richard Roy	Oklahoma City, OK	25		
	Bussell, Pauline	Wichita, KS	25	29 Jan	29 Jan 1910
M637	Jones, Earnest L.	Beaver City, OK	38		
	Bosworth, Atlena Della	Towanda, KS	18	31 Jan	31 Jan 1910
M637	Smith, S. Earl	Topeka, KS	25		
	Jones, Hester	Wichita, KS	25	29 Jan	29 Jan 1910
M638	Dennett, E.F.	Derby, KS	58		
	Alley, Alice	Augusta, KS	46	31 Jan	31 Jan 1910
M638	Slattery, Thomas J.	Morris, IL	27		
	McEvoy, Margaret Tresa R.	Wichita, KS	21	03 Jan	02 Feb 1910



WICHITA HISTORICAL PANEL NO. 104

Early Horse Thieves Shied Away from Theft of Mules

Gentry Feared They Would Get Government Animal
and Crosswise with Uncle Sam



(Wichita Historical Panel No. 104)

HORSE THIEVES during the late sixties and early seventies shied away from stealing mules in and near Wichita. Ponies and horses were stolen unless closely watched, but not mules. The reason, according to W. G. Taylor of Cleveland, O., a resident of Wichita from 1868 to 1873, was because the prairie forts had many mules. Uncle Sam was the owner and when they were stolen the culprits were violating a federal law. Horse thieves soon learned it best to leave mules alone, for they couldn't tell when they were getting government animals. When residing here Taylor owned some mules which were worth \$400 a span and Texas ponies, worth around \$25 each. He had several ponies stolen, no mules.

Reprinted by permission of The Wichita Eagle

WICHITA HISTORICAL PANEL NO. 105



*Benajah W. Aldrich married Annie E. Stone
on 2 June 1874 in Sedgwick County.*

Reprinted by permission of The Wichita Eagle

18TH JUDICIAL DISTRICT PROBATE INDEX

Explanation of Column Headings	
Case	Number assigned to case
Name	Names of major parties involved; guardianships list each individual separately
Date	Earliest date found in file, not necessarily date case was originally filed
Type	D = Death G = Guardianship M = Miscellaneous, further described in Comments column
Pages	Approximate number of pages in case; if 10 or fewer receipts/canceled checks, included in page count, otherwise shown separately in Comments column
Comments	Any other type of pertinent information not appearing in other columns

Case	Name	Date	Type	Pgs	Comments
6865	St. John, Lizzie	3-Aug-1917	G		See St. John, John
6865	St. John, Rachel	3-Aug-1917	G		See St. John, John
6865	St. John, Rhoda	3-Aug-1917	G		See St. John, John
6866	Rogers, Martha E.	4-Aug-1917	D	51	
6867	Downing, Kate E.	14-Sep-1917	D	46	
6868	VanDoren, Belle	21-Aug-1917	D	31	Plus 21 receipts
6869	Kennedy, Anna E.	22-Aug-1917	D	33	
6870	Thomas, Burt O.	22-Aug-1917	D	16	
6871	Feast, E. John A.	23-Aug-1917	D	28	
6872	Baker, Henry	23-Aug-1917	D	25	
6873	Fluhrer, Regina	23-Aug-1917	D	29	
6874	Broderick, Charles A.	23-Aug-1917	D	16	
6875	Rogers, James L.	25-Aug-1917	D	13	
6876	Rogers, Fred	25-Aug-1917	G		See Rogers, Jim
6876	Rogers, Jim	25-Aug-1917	G	24	Also Rogers: Martha, Fred
6876	Rogers, Martha	25-Aug-1917	G		See Rogers, Jim
6877	Thomas, Homer O.	25-Aug-1917	D	38	
6878	Ramser, John	25-Aug-1917	D	38	
6879	Eldriedge, James H.	22-Aug-1917	D	16	
6887	Hamm, Eleanor J.	1-Oct-1917	G	22	
6923	Throckmorton, W.B.	27-Aug-1917	D	43	
6924	Ballard, Fred A.	30-Aug-1917	D	33	
6968	Parker, Catherine	10-Sep-1917	D	38	Plus 22 receipts
6969	Shoff, Albert Bryan	5-Sep-1917	G		See Shoff, Harold
6969	Shoff, Harold	5-Sep-1917	G	31	Also Shoff: Albert Bryan, John
6969	Shoff, John	5-Sep-1917	G		See Shoff, Harold
6970	Roulet, Eva K.	6-Sep-1917	D	26	
6971	Graham, George W.	7-Sep-1917	D	39	
6973	Goldberg, L.W.	10-Sep-1917	D	23	
6974	Gorges, Joseph	20-Sep-1917	D	93	Plus 112 receipts
6975	Coburn, Adelia V.	15-Sep-1917	D	18	

Probate Index, continued

Case	Name	Date	Type	Pgs	Comments
6976	Smith, Oramel Martin	15-Sep-1917	D	38	Plus 22 receipts
6977	Russell, Harry G.	14-Sep-1917	G	67	Also Russell: W. Orvin, Rachael Elizabeth - Plus 214 receipts
6979	Althouse, Anna M.	21-Sep-1917	D	50	Plus 27 receipts
6980	Joseph, Hannah	21-Sep-1917	D	36	
6981	Whitehead, Margaret J.	8-Oct-1917	D		See Whitehead, Samuel
6981	Whitehead, Samuel	8-Oct-1917	D	39	Also Whitehead, Margaret J.
6982	Hamm, Ethel F.	1-Oct-1917	G	25	
6983	Ames, W.V.B	28-Nov-1917	M	7	Aid in Execution
6984	Folkers, D. Karl	4-Oct-1917	D	18	
6985	Trimble, Charles	4-Oct-1917	D	33	Plus 15 receipts
6986	Dugan, James	6-Oct-1917	D	37	Plus 61 receipts
6987	Thayer, James L.	8-Oct-1917	D	89	Plus 10 receipts
6988	Woods, James	10-Oct-1917	D	28	Plus 20 receipts
6989	Hamm, Lummie G.	18-Oct-1917	D	42	
7000	Money, J.W.	11-Oct-1917	D	78	Plus 49 receipts
7001	Light, Frank A.	15-Oct-1917	G		See Light, Marie
7001	Light, Marie	15-Oct-1917	G	33	Also Light, Frank A.
7004	Newlin, Pazzetta	17-Oct-1917	D	6	
7005	Zeigler, T. Reid	22-Oct-1917	D	69	
7006	Boyer, A.C.	1-Dec-1917	D	49	Plus 14 receipts
7007	Fisher, Charles W.	11-Oct-1917	G	52	Also Fisher: Leroy R., Paul M.
7007	Fisher, Leroy R.	11-Oct-1917	G		See Fisher, Charles W.
7007	Fisher, Paul M.	11-Oct-1917	G		See Fisher, Charles W.
7008	Knorr, James H.	27-Oct-1917	G		See Knorr, Thomas H.
7008	Knorr, Thomas H.	27-Oct-1917	G	22	Also Knorr, James H. - Plus 38 receipts
7009	Barber, Cornelius C.	29-Oct-1917	D	8	
7010	O'Brien, William	29-Oct-1917	D	51	Plus 35 receipts
7012	Trego, William W.	29-Oct-1917	D	47	Plus 21 receipts
7013	Bluff, Belle	30-Oct-1917	D	12	
7029	McLaughlin, Alice	2-Nov-1917	D	69	Plus 32 receipts
7031	Howard, Mary C.	31-Oct-1917	D	41	Plus 55 receipts
7032	Whitney, Harold B.	6-Nov-1917	G	11	
7033	Wills, Henry	21-Nov-1917	D	28	Plus 41 receipts
7034	Swaney, William	17-Nov-1917	D	58	Plus 26 receipts
7035	Gregory, Wilber S.	21-Nov-1917	D	59	
7036	Gilmore, John M.	5-Nov-1917	G	16	Also Gilmore, William S.
7036	Gilmore, William S.	5-Nov-1917	G		See Gilmore, John M.
10404	Wattles, Jennie F.	7-Oct-1926	D	16	Filmed with case 4148

**Copies of probate files may be purchased from MHGS by regular mail
(MHGS, Attention: Probate File Assistant, PO Box 1121, Wichita, KS, 67201-1121),
by phone (316-264-3611) when the library is open,
or by email (info@mhgswichita.org)**

The Wichita Weekly Eagle

Thursday, January 9, 1873, page 3

Column 1

CITY AND COUNTY NEWS.

See report of the city treasurer in another column.

Fresh butter in rolls is selling for twenty-five cents per pound.

The warm south wind Saturday and Sunday melted the snow.

Schweiter & Davidson have repaired the sidewalks nicely.

Sweet potatoes are plentiful in this market at three dollars per bushel.

Somebody has cut nearly all the timber off of the island south of the city.

Go to prayer meeting this afternoon at 3 o'clock and preaching to-night.

The joint stock brick company held a meeting this week and declared a dividend.

About five hundred people attended the revival meeting at Eagle hall Sunday night.

W. C. Little, our new judge of probate court, donned his robe of office this week.

We publish this week the proceedings of the county commissioners at their last meeting.

Dr. C. E. Fisher was appointed by the county commissioners as physician for the county.

A. B. McCabe, the handsome man of the *Commonwealth*, called on the EAGLE this week.

Miss Elmira White offers her services to the ladies as a professional hair dresser. See her card.

Some of our farmers, who have peach trees, say the buds are not killed. We hope this is the case.

The weather has been warm and pleasant a few days this week, like the winter days of Kansas in earlier times.

The week of prayer was observed by the church of the city by holding prayer meetings on each afternoon.

Todd & Royal will erect a first-class business house on the corner of Main and First streets, east side, early in the spring.

The demand for pork in the city is greater than our home supply, consequently a great deal is brought in by the railroad.

H. B. Norton was in the city this week loading his train with Indian supplies, to be taken to his ranche [sic] in the Indian territory.

The number of names registered at the Douglas Avenue House since the 7th day of last June is six thousand five hundred and forty.

The melted snow in the valleys have raised the streams throughout the country. The people will be crying for bridges soon, we think.

R. Jacks has gone to Pueblo, Colorado, to be absent about two months. His business will be conducted during his absence by competent parties.

A union protracted meeting, carried on by the Methodists and Presbyterians, seems to be gaining in interest. Quite a number have professed religion.

We will publish next week a well written article on the Arkansas valley, written by a gentleman employed by the railroad company to write up the valley.

Dr. Doyle, dentist, has moved his office to rooms opposite West & Mann's hardware store, where he is prepared to do all kinds of work in his line, guaranteeing satisfaction.

The number of scholars in attendance at our city school has been steadily increasing since the first of the year. The number at present on the school roster is about four hundred.

William Ross, living on the Nennescah [sic], has his whole claim surrounded by a thrifty hedge. Also a nice young orchard and a large number of forest trees. His place is a pattern for farmers.

G. W. Reeves, clerk of the district court and dealer in real estate, is also an insurance and collecting agent. All business in his line entrusted to him will be promptly attended to. See his card.

The Frontiers are hard at work practicing for their entertainment, which they do not propose to give until each one engaged can render his part in an acceptable manner to a criticising [sic] public.

The weather this week was warm, with a pleasant wind from the south, until Tuesday evening, when it shifter to the north, bringing with it a drizzling rain or heavy mist, accompanied with bright flashes of lightning.

The postmaster general has advertised for proposals to carry the mail from Wichita to Solomon City and return, once a week. Also from Wichita via Belle Plaine, Oxford and Remanto¹ to Arkansas City and back, once a week.

The stock yards at the railroad are to be enlarged. There will also be a new set of yards made near the city for the convenience of buyers and sellers. No pains will be spared in fixing up for the accommodation of dealers the coming season.

¹ Now known as Geuda Springs.

Spring will soon be upon us, and every farmer should, as soon as the weather will permit, plant some trees – as great a number as they possibly can – for nothing adds more to the looks of a place than a nice grove of trees around a farm house.

Mr. W. D. Russell, of the firm of Shlichter [sic] & Russell, has gone east to purchase a large stock of seeds, plows, and all kinds of farming implements. This enterprising young firm is doing a large business and working faithfully to please all their customers.

A. C. Schnell, of the late firm of Callen, Moore & Co., is again in our city, trying to perfect arrangements for opening a jobbing house in the spring. Mr. Schnell has received a number of letters from Texas men telling him that they intend to drive their cattle to this place the coming season for shipment.

Some thirty or forty of the scholars in the city schools have been taken with some kind of an epidemic or complaint, twenty-five were dismissed from the school in one day. They commenced coughing and running at the nose, followed by a very sore throat. The probable cause is that the rooms are not properly ventilated.

A change of firm name has been made at the Diamond Front grocery store. Mr. Black has associated W. S. Corbett, his well-known and popular clerk, with him as a partner. They propose to enlarge their stock and keep pace with the market in all the different branches of their trade. We bespeak for them a liberal patronage.

J. S. McIvor, a gentleman well known throughout Southwestern Kansas, has gone into business with L. W. Clark, at the old stand of J. G. Hope, on Main street. Having a ripe experience, coupled with his practical business qualities, he will no doubt increase their already large trade. The firm have on hand and propose to keep for sale the best grades of liquors at wholesale.

Dr. H. C. Tucker, of El Paso, assisted by Drs. Oatley and street [sic], of this city, performed successfully on the person of Isaac Riggs the amputation of both feet – Chopan's operation. They also amputated the little finger of each hand. Mr. Riggs is one of the parties that we gave an account of in our last week's issue as being very badly frozen. His father, Judge Riggs, who has since died, was taken to Marion county for interment.

There will be a meeting of the business men and those interested in the welfare of the city, next Tuesday evening, at the rooms under the First National bank, for the purpose of organizing a board of trade. It is hoped that our business men especially will attend this first meeting, so that the organization can be perfected at once and go immediately to work, as a great deal of business pertaining to the interests of the city for the coming season must be attended to.

Column 2

At a meeting called January 9th, for organizing the Hook and Ladder company, on motion Chas. Phillips was chosen chairman, and R. L. West, secretary.

On motion, made by Mr. T. J. Hall, society proceeded to elect officers by ballot: Geo. Matthews, foreman; Chas. Phillips, 1st assistant foreman; W. D. Russell, 2nd assistant foreman; R. L. West, secretary; M. Zimmerly, treasurer.

It was moved by Chas. Phillips that the organization be known as the "Frontier Hook and Ladder company No. 1," of Wichita. Motion carried.

Moved by Mr. Phillips that a committee of three be appointed to revise by-laws, and report at next meeting. Motion carried.

Moved that the 2nd assistant, secretary and treasurer form the committee. Motion carried.

Moved that Mr. J. T. Hall be added to the committee. Motion carried.

Moved that the foreman and 1st assistant foreman make arrangements for suitable rooms to meet in.

Meeting adjourned.

The ladies' relief association met at Mrs. B. H. Fisher's on Wednesday afternoon, January 8th, and organized as follows: President, Mrs. B. H. Fisher; vice-president, Mrs. Hills; secretary, Mrs. Langel; treasurer, Mrs. Harris. After which the following committee was appointed to look up such as shall need assistance: Misses Brown, Mrs. Baldwin, Mrs. Emerson, Miss Lee, Mrs. Todd. Directing committee – Mrs. West, Mrs. Reeves, Mrs. Fisher, Mrs. Baldwin. Now as there are many people in and about our city who suffer for the necessities and comforts of life, and as we, the above-named ladies, have organized this society for the purpose of trying to alleviate all we can, we hope we may have the hearty co-operation of all who are able to help, in the way of donations of clothes, bed-clothes, provisions or money. All such will report at our next meeting, which convenes at Mrs. B. H. Fisher's every Wednesday afternoon. Hope all the ladies who can will attend our meetings.

MRS. M. J. LANGEL, Secretary.

In another column appears the statement of the Wichita Savings Bank, certified to by the examining committee of the stockholders. Taking the bank, as

it does, just at the worst time in the year, when there is not a dollar of outside capital in the city, and when the business men are using their entire capital, it is a showing that any bank in their circumstances might be proud of. Commencing business about the 1st of August with a cash capital of only a few thousand dollars, and not collecting the full \$50,000 until in December, the bank has had but an average of \$23,000 to operate on, so that their profits are in reality over forty percent, on their capital. Considering the disadvantage a new bank labors under, and especially where strangers are largely interested in it, and also remembering that an old established National Bank, enjoying the full confidence of the people, was already operating here, the officers and directors of the Wichita Savings Bank have good reason to be proud of their success.

A Wichita man was arrested recently on the charge of carrying concealed weapons. On being searched there were discovered on his person two navy revolvers, three pocket pistols, two billies, some brass knuckles, an air gun, and a sword cane. As this damning evidence came to light, the prisoner smiled a brief smile, and explained that he had merely armed himself for the purpose of going out on the plains to fight the Indians! The justice, we are sorry to say, discredited the man's story and sent him to prison, and now the Indians will continue their depredations as usual. — *Atchison Champion*.

Upon further inquiry, the aforesaid proved to be the "Great American fool-killer," who had started for Atchison and missed his way. He was immediately re-armed and sent back, and the writer of the above would do well to make himself scarce for a few days.

At the annual meeting of the stockholders of the First National Bank, held on the 8th inst., the following gentlemen were elected directors for the ensuing year: W. A. Thomas, Wm. Greiffenstein, J. R. Mead, J. C. Fraker and A. H. Gossard. The directors then elected the following named officers: J. C. Fraker, president; J. R. Mead, vice president; and A. H. Gossard, cashier. On motion the following resolution as adopted:

Resolved, That the thanks of the board of directors be extended to J. C. Fraker, president, and A. H. Gossard, cashier, for the marked ability and untiring industry with which they have discharged

their respective duties during the year just closed, and that to their able management the bank is indebted in a great measure for its unprecedented success.

THE OSAGE INDIAN TRUST LANDS. — The way to reach the Osage Indian trust lands, which are now open to actual settlers at \$1.25 per acre, is to take the Atchison, Topeka and Santa Fe railroad to Hutchinson and cross the Arkansas river free bridge and go twenty miles south. The lands then extend fifty miles to the state line. — *Hutchinson News*.

The way to reach the Osage Indian trust lands is to take Atchison, Topeka and Santa Fe railroad to Newton, thence by way of the Wichita and Southwestern railroad to the great metropolis of the Southwest — Wichita — in the center of the Osage lands, where the U. S. land office is located, and any information wanted regarding the lands yet unoccupied can be obtained, with plats.

The Wichita Liberal Fraternity still keeps right long and holds meetings every Thursday evening. Not many were present last week, but the members are determined that opposition shall never crush the spirit of free thought. Programme for this evening as follows: Music. Select reading — subject "Our army of the dead." Lecture by Judge Tucker, of this city; subject, God in the constitution or the amendments proposed by the evangelical alliance of America." Exercises begin at 7 o'clock.

S. M. TUCKER, Prest.

Q. A. SMITH, Sec'y.

Mr. J. M. Allison, one of the old settlers of this valley, sold his farm last week to Mr. Higginbotham, of Hamilton county, Texas, for the sum of \$5,000. Mr. Higginbotham purposes bringing his family from Texas and taking up his home among us. We are pleased to know that so many of those who drove cattle here last year are making investments in our midst. It shows that cattle men are pleased with our valley as a stock-raising country, and further, insures the drive to this place for succeeding years.

Any one looking over the history of the leading cities and towns of our state will see that their growth is not owing altogether to their natural advantages. True, that is the basis, but intelligent co-operation is essential to success. You can plant the

Wichita Weekly Eagle, continued

embryo of a city down in the sand of a desert and make a commercial emporium of it. And we at Wichita, at the junction of two great rivers, having great natural advantages, will not realize our bright hopes of a great city if we do not heartily co-operate.

On the first page of this paper is an article on Wichita, by Rossington, the traveling correspondent of the *Commonwealth*.

Column 3

List of Letters

Remaining in the postoffice at Wichita, Kansas, on the 6th of January, 1873.

LADIES' LIST.

Booker mrs Carrie S	Rickey mrs Anglica
Curran Fannie	Rogers Maggie J
Dennett mrs Amelia	Smith Hattie A
Ferry mrs Mattie	Smith miss Mary
Hall mrs Irine	Smith Mollie
James miss Sallie	Tatum miss Martha
Mehew miss Susie 2	Walker mrs Anna
Magan mrs Louisa	West mrs P L
Patter miss Jennie	West miss Claudie

GENTLEMEN'S LIST.

Avery CH	Metzer Fritz
Beasley mrs H	Mahlandt D W
Baldwin J	Mooney James
Bedford Henry	Menser Wilhelm
Barth Gustave	McConabi A A 2
Boyce Benj	McConabi E
Bradford John D	Pendergrass Albert
Baster James	Patrick J M
Burkholder Jos P	Rockey Jacob
Coleman J W	Rhinehart John
Codington Sam W	Reed Amos 2
Crum P S	Pierce & Reed
Cunningham T L	Smith Wm A
Coggshehl Peter	Smith H T
Crebo Edward	Streeter Ira
Chapman David	Silver David
Campbell W H H 2	Swingle Milo 2
Carter Henry	Sanders Wm
Deming H M	Springob Johan
Denson Z T	Sloan James B
Dunning Wm C	Schring C F
Estes S S	Sargent Henry
Fuller C H	True James E
Gibson Thomas	Witturn Winfield
Howard C A	Walker Samuel C
Haslett John	Ward Samuel B

Howe E C
Hall George
Laferty John
Leach C B
Longwell James
Meeker Geo E

Wyckoff Sylvester 2
Willson J Q
Wettig Adam
Vanhorn Joseph
Vedder Chas F
Young Dennis

List of letters remaining January 13, 1873.

LADIES' LIST.

Allison miss Laura	Hitchett miss H D
Anderson mrs Ratonina	Hendrickson mrs S T
Baldwin mrs Emily	Krogman miss M
Briant miss Ella	Kent miss Celitia C
Boothe mrs M E	Leach Susan
Burns mrs Phila	Metice mrs Louisa
Carlton mrs Emma	Miner miss Annie
Cole miss Mahola	Morgan miss Ida S
Davis mrs Susan	Peck miss Emma
Donevan mrs J	Robinson miss L
Evans miss Mollie E	Reeves mrs Lizzie H
Hogan miss Maggie	Saylor miss Lizzie

GENTLEMEN'S LIST.

Arnold Geo	Gascoigne John
Armstrong J S	Grandycan Chas
Armstrong B C	Geer F G
Benton Geo B	Henrie James
Bowman Edas W	Haywood S S
Bowman William	Harrison W H
Bowman William	Harris Walter G
Burris Samuel	Hubbard J C
Burris James	Hope Oliver A
Brusier A J	Heath A M
Baster John	Hendrickson W F
Baker Jos E	Jackson J J
Boughman J W	Ketchma A
Biggar W K	Kelleper M
Boothe ----	Keho Herman
Black Harvey	Luhn P
Beebe Walter	Laughlin J
Baxter John	Maupin Edsa 4
Cetschron Wm	Mabland Wm
Cooper B F	Murphy & Carroll
Cole John V	Moore L
Crahler(?) W Z	McCalivy J S
Cooley Edward	McCamable A H
Coggshehl Peter	McCandless D A
Coleman J W	McLellan Geo R
Case H H	McCarty H
Cummings William	M'Cenachie Alexander
Cunningham Theodore	Mahodmot Jacob
Chapman David	Patterson Virgle
Crebo Edward	Palmer J C
Craig Charles	Peck A G 2

Cray Frank	Porter A M
Dennis C	Pride M C
Dunning Wm C	Pierson Mike
Denson J T	Peck John M
Dewing H L 3	Reeves J R
Dane Prince	Stratton Oliver
Duyer John	Sherman S C
Drake Theodore	Springob John
Dodg M	True James
Dursey E A	Turner Jos O
Ellsworth Ed	Turnbaugh Henry
Forg(?) Jos H	Willson Charl
Fulleridor(?) A T 2	White capt Wm
Forsythe W J	Williams Robt
Ford Geo	Worshell John J
Fuller Chas H 2	Willson Fletcher
Fisher Henry	Wright Albert
Gray & Bros	

Please say "advertised," and give date of list.

J. T. HOLMES, P. M.

Column 4

Proceedings of the Board of County Commissioners.

WICHITA, KS., Jan. 6-7, 1873.

Present – Sol. H. Kohn and John Carpenter.

Absent – R. A. Neely.

Resolved. That the county superintendent be allowed to obtain a desk or office; price not to exceed ten dollars.

Petition from Waco to divide said township was granted, according to petition; to be called Watson township.

Mr. J. T. Watson was appointed township treasurer of Waco township, to fill the unexpired term of S. Mann, non-resident.

Official bond of A. I. Blake was approved.

The following bills were then allowed:

Albert Emerson, justice's fees	\$44.30
H. J. Reimers, stationery to county	73.00
L. F. Buttles, publishing road notice	3.00
Dr. H. Owens, mileage and balance due	
contract of 1872	207.00
A. P. Hartwell, judge of election	2.00
E. P. Thompson, assessing Kechi township	34.40
L. D. Jacobs, medicines, attendance (abroad)	9.75
T. J. Smith, judge of election	2.00
J. M. Atwood, examiners (teachers)	3.00
C. M. Tyrrell, judge of election	2.00
J. N. Miller, judge of election	2.00
Wm. Greiffenstein, hall rent for court	
per annum	100.00

Sol. H. Kohn, services as county	
commissioner, 1872	69.00
D. A. Mitchell, county coal	53.71
G. B. Hatfield, superintendent bridge work	4.00
M. A. Sayles, clerk of election	2.00
R. B. Read, judge of election	2.00
S. Clark, clerk of election three times	6.00
Albert Emerson, county superintendent	
services	30.00
Daniel Hoover, use of house for polls	2.00
J. C. Morehouse, deputy sheriff fees	125.05
J. C. Morehouse, deputy sheriff fees	53.60
J. C. Morehouse, deputy sheriff fees	5.75
George D'Amour, deputy sheriff fees	57.45
George D'Amour, deputy sheriff fees	23.50
George D'Amour, deputy sheriff fees	90.30
H. Bolte's referred bill for chairs allowed	23.00
R.L. West, witness fees on case of Williams	4.50
John Falkenstein, witness fees on case	
Summers	1.20
A. I. Blake, arresting prisoners	3.70
A. Emerson, forming school district No. 5	1.50
James Antrim, conveying prisoners to	
Wichita	43.05
John Meagher, state of Kansas vs. Baron	4.29
John Meagher, sheriff services allowed	
amount	100.00
Chas. Cordeiro, board and lodging	13.00
Gustave Koehler, janitor fifteen days	15.00
John Behrens, bailiff services	4.00
Geo. S. Henry, guarding prisoners	4.00
Eugene Schattner, guarding prisoners	2.00
S. K. Ohmert, guarding prisoners and	
constable services	28.85
E. H. Ohmert, guarding prisoners	8.00
A. I. Blake, constable fees	27.00
District clerk's costs for December term of	
district court, 1872, allowed; total	111.10
Todd & Royal, groceries to paupers	27.57
C. A. Stafford, justice fees in four cases	10.25
Chas. W. Hill, medicine to paupers	75
C. Pearce, team and wagon	4.00
Allen & McKillip, groceries	5.35
H. Bolte, coffin furnished	14.00
Charles Marsh, agent A., T. & S. F.,	
transportation of prisoner	9.50
Chas. W. Hill, medicines to paupers	18.25
Hobbs & Pittenger, groceries	19.47
Mrs. McGonnell, boarding paupers	139.79
Margaret McAdams, rent for poor house,	
four months	100.00
D. A. Mitchell, coal to paupers	12.85
C. W. Hill, services as overseer of the poor	90.00
James Moracey, taking care of paupers	24.00

Wichita Weekly Eagle, continued

S. Fitzgerald, taking care of paupers..... 30.00
Brasfield, & McKee, merchandise to county 27.00
M. Craig, repair of pump, poor house..... 1.50
Philip Oswon, boarding and furnishing
coffin 10.00
J. H. Aley, boots to paupers 7.00
John Sheanon, blankets to paupers 12.00
Hays Bros., shoes, socks, hat and coat..... 13.25
Joseph Weidman, for lounge to poor house..... 5.00
Allen & McKillip, groceries 32.20
C. F. Pierce, wagon to bury pauper..... 1.50
David Maxfield, goods to paupers 8.68
T. J. Clark, merchandise to paupers 5.55
Q. H. Merrill, services trustee Lincoln..... 27.00
Brasfield & McKee, flannel..... 7.80
M. R. Cordeiro, taking care of paupers..... 5.00
Todd & Royal, groceries to paupers 13.00
Allen & McKillip, groceries and provisions 17.75
Bill of Drs. Owens & Medlin, for amputating limb,
not allowed
Chas. Hatton, prosecuting attorney's services, not al-
lowed.

Kullak, Millis & Stem, Hicks' burial expenses (New-
ton), not allowed.

All bills of H. E. Van Trees, or bills connected with
said court, not allowed.

On motion of Mr. Carpenter, F. W. Chase was ap-
pointed township trustee of Park township, for fill the
unexpired term.

The following resolution was adopted:

Whereas, H. E. Van Trees having failed to comply
with the requirement of the law, no further business will
be accepted until his official bond is filed and recorded
in the county clerk's office.

Medical attendance to county paupers for the year A.
D. 1873 was awarded to Dr. Chas. E. Fisher, county at-
torney to draw up contract according to bid received.

Petition praying for an appropriation of \$500 to con-
struct a bridge across Chisholm creek was laid over.

Resolved. That an appropriation of \$250 be made to
erect a bridge near Samuel Hoovers (Chilsholm creek),
and an additional sum of \$100 for the lower bridge, and
that the township trustee of Wichita township proceed to
contract and complete the two (2) bridges as specified.

The Chisholm creek delegation then departed in
peace.

It was further

Resolved. That all petitions have reference to bridges
of like nature will be referred to their respective town-
ships, as no further action will be taken by the board of
county commissioners.

The board then proceeded to draw the jurors, accord-
ing to law, for the year A. D. 1873. Total number se-
lected 200.

Business was then suspended until their next meet-
ing, first Monday in February.

FRED. SCHATTNER,
County Clerk.

City Treasurer's Statement, January 1, 1873.

RECEIVED.

Dramshop license.....\$4,000.95
Fines city marshal1,995.00
Fines police judge1,339.65
County treasurer.....944.96
County use of calaboose120.75
All other sources, including merchandise.
(dogs \$60)1,347.36..... \$9,758.67

PAID.

Police.....3008.55
Street account.....1,703.70
Culverts (Main street and
Douglas avenue).....696.72
Fire department616.92
Sidewalks and crossings914.63
City attorney.....325.00
Judges of election.....44.00
City engineer116.50
City clerk.....242.00
Police judge.....172.70
Office rent (council, marshal and
police judge).....160.00
Printing and stationery223.40
Calaboose and pound164.20
Boarding prisoners211.80
Fourth of July committee100.00
James Bryden, service on trail400.00
Atchison reception committee150.00
Paid George Richards,
account of advertising50.00
City appropriation10.00
Fees district clerk4.30
Die for dog tags.....5.00
Dray service3.75
Swearing in school board.....1.00
Burying dead animals8.00
Police whistles1.90
Account of (?), printing, etc.....25.66.....\$9,358.73
\$399.94
Treasurer's commissions 270.90
\$129.04

NEW MATERIALS IN THE MHGS LIBRARY

Compiled by Julia Langel

Accession No.	Pub. Date	Author	Title
G-A 048	1994	Peck, Anna Allison	Anna plus: tales from a town called Wells
G-G 080	1985	Jones, Billy M.	Olive White Garvey: Humanitarian, Corporate Executive, Uncommon Citizen
G-H 150	2000	Bales, Dane G.	Kate Hansen: The Grandest Mission on Earth From Kansas to Japan, 1907 - 1951
R-210 151 V 38-39	2013-2015		Kansas Review
R-210 152	1987	Miner, H. Craig	Discovery! cycles of change in the Kansas oil & gas industry, 1860-1987
R-210 BA 06	1970	Yost, Nellie Irene Snyder	Medicine Lodge: the story of a Kansas frontier town
R-210 BT 10	1987	Huff, Wayne	Centennial History of Claflin, Kansas
R-210 BT 11	1983	Vratil, Patty	The History of St. Joseph's Parish, 1876-1983
R-210 BT 12	1972		Great Bend, Kansas: A Historical Portrait of the City
R-210 DG 13	1951	Ebright, Homer Kingsley	The History of Baker University
R-210 DG 17 1990	1990		G-Hawker
R-210 DK 06	1999	Dingler, Helen	Past and Present Towns of Dickinson County, Kansas
R-210 ED 05	1976	Ackerman, Julie Riisoe	Offerle History: 1876 - 1976 Centennial
R-210 EL 10	1982	Meyer, Fr. Ear R.	Grains of Wheat: Record of Deaths and Burials 1876 - 1982, St. Francis Parish, Munjor, Kansas
R-210 FO 14	1953	Tieben, Marie	Diamond Jubilee of the Immaculate Heart of Mary Parish, Windthorst, Kansas
R-210 HV 17	1954	Wedel, Peter J.	The Story of Bethel College
R-210 LY 16	2007	O'Connor, John	Sesquicentennial of Hartford, Kansas: A Tribute to Our Past 1857-2007
R-210 MC 06 V 32-33	2013-2014		Waconda Roots & Branches
R-210 MG 15	1991		Glimpse of Tyro, Kansas (1991 reprint)
R-210 MN 17	2007	Costello, Edward J.	Tampa: A History of Tampa, Kansas, and its Environs 1887 - 2001
R-210 MN 18	1987	Vogt, Martha Pat	Durham Centennial Book: Pride in the Past, Faith in the Future
R-210 MP 06	2002	Penner, Mil	Section 27: a century on a family farm
R-210 MP 07	1987		Century one: history of Moundridge, Kansas, 1887-1987
R-210 MP 08	1965	Billdt, Ruth	Pioneer Swedish-American Culture in Central Kansas
R-210 PN 05	1976	Todd, Arlene Notestine	History of Browns Grove & Burdett Kansas

MHGS New Materials, continued

Accession No.	Pub. Date	Author	Title
R-210 PN 06	1976		Progress 200: Pawnee County
R-210 RH 03	1987	Higgins, Shirley	McCracken, Kansas History 1887 - 1987
R-210 RL 13	1940	Willard, Julius Terrass	History of the Kansas State College of Agriculture and Applied Science
R-210 RL 14	1963	Howes, Charles C.	Kansas State University: A Pictorial History 1863 - 1963
R-210 RN 18	2004	Baker, Mary Lynn	The Hutchinson Spirit
R-210 RO 03	2008	Lynch-Rachel, Candace	Positively Plainville
R-210 SF 04	1987		Re-Echo 1887-1987 Centennial Edition: St, John, Hudson, Antrim
R-210 SG 091 1956	1956		The Tower
R-210 SG 091 1957	1957		The Tower
R-210 SG 165			Greater Wichita Telephone Directory, 1933
R-210 SG 194	2016	Price, Jay M.	The Chisholm Trail and the Birth of Wichita
R-210 SG 195 1975	1975		Trojan Shield
R-210 SG 195 1976	1976		Trojan Shield
R-210 SG 196	2005		St. Peter the Apostle Catholic Church, Schulte, Kansas, Centennial 1905-2005
R-210 SG 197			Sedgwick County, Kansas, Sherman Township, Justice of the Peace Docket, 1879-1899
R-210 SH 03	1976	Winter, Lois	Kanorado, Kansas
R-210 SN 18	1886	Giles, F. W.	30 Years in Topeka 1854 - 1884: A Historical Sketch
R-210 SN 19	2001		Topeka: A History in Pictures
R-210 SN 20	2003	Biles, Jan	Topeka Remembers: A Personalized History of the Capital City
R-210 SU 36	2002	Coke, Tom S.	Old West justice in Belle Plaine, Kansas
R-210 SU 37	2003	Cook, Rod	George and Maggie and the Red Light Saloon: Depravation, Debauchery, Violence and Sundry Cussedness in a Kansas Cowtown
R-210 WS 04	1978		Gospel Hill: A History of St. John the Baptist Church, Hanover, Kansas 1868 - 1978
R-210 WY 02	1955	Major, Ralph H.	An Account of the University of Kansas School of Medicine
R-300 282	1970		Aurora Yesterday and Today: Centennial 1870 - 1970
R-300 283	1970		Freeman at One Hundred
R-390 146	1998	McGuire, Lloyd H.	Birth of Guthrie: Oklahoma's run of 1889 and life in Guthrie in 1889 and the 1890's with follow-up through the 20th century
R-390 147	1968	Boone, Marijane	Newkirk and Kay County Diamond Jubilee
R-410 333 V 36	2015		Blair County Genealogical Society Newsletter
R-640 110	1993	Blair, Don	The New Harmony Story

UPCOMING MHGS EVENTS

All events and programs will take place at the MHGS Library, 1203 N Main, unless otherwise noted.

All events and programs are free and open to the public.

A non-member access fee is collected for research in the MHGS library before or after the event/program.

Writing a Profile of your Civil War Ancestor—First Saturday 1:30 PM to 2:30 PM – Julia Langel

In this series of workshops, we will be learning how to write a profile of a Civil War soldier or sailor. We will be starting from a basic outline. During the workshop, we will be using this outline to write a one page profile, but the outline can be extended in many ways, even to a full length book.

June 3 Topic: Military Service July 1 Topic: Military Context

Genealogy Power Up! SIG – Second Tuesday, 1:30 PM to 3 PM – Twila Brown & Julia Langel

Let's power up our research techniques! This is a casual discussion group on genealogy topics. Please bring a question, suggestion, story, website or book to share.

June 13 topic: Photo Editing July 11 Topic: Brick Walls

Genealogical DNA SIG – Second Saturday at 1 PM – Paul Renner Smith

Sessions held June 10, July 8 from 1 PM to 2 PM

Discover the latest news in the field of Genealogical DNA study. This informal discussion group uses the newest information available to learn what DNA can tell us about our ancestors. Learn what different tests are available and where.

Genealogy on the Internet SIG – Third Saturday 10 AM to Noon – Jim Scharnhorst

Sessions held June 17, July 15 from 10 AM to Noon

Discuss the process of researching our family using the internet. Genealogy research has embraced the computer as not only the most efficient way to organize data, but the quickest way to access historical records. The ongoing digitization of documents for preservation purposes makes them searchable, economical, and immediately available. Our meeting is for sharing the sites we find most useful, finding solutions to the problems that have developed and learning what the future holds.

DAR Special Interest Group – Third Saturday 1 PM to 3 PM – Lucille Williams and Sandi Bush

Sessions held June 17, July 15 from 1 PM to 3 PM

Do you have ancestors who served in the American Revolution, either in a military unit or by providing service in another way? We can help you with the application process, show you what records you need to qualify, and give you all the details. Led by Sandi Bush and Lucille Williams.

Afro-American SIG – Fourth Saturday 1 PM to 2 PM – led by Jozel Smith Eckels

Sessions held June 24, July 22 from 1 PM to 2 PM

Special Interest Group encourages historical and genealogical study of families of any ethnic group with special emphasis on Afro-Americans. This informal group will seek to learn more of the history and factors within the family stories we have been told. We will demonstrate how to research your family tree with the goal of discovering and understanding your family history. The discussions will include a variety of methods, including exploring public records, interviewing older relatives and preserving information.

INDEX

Adams.....	108	Boyd.....	103	Cunningham.....	118
Adamson.....	110	Boyer.....	114	Curran.....	118
Albright.....	110	Bradford.....	118	D'Amour.....	119
Aldrich.....	112	Bradshaw.....	110	Dagner.....	99
Aley.....	120	Bragg.....	99	Dane.....	119
Allen.....	119, 120	Brasfield.....	120	Davidson.....	109, 115
Alley.....	110	Briant.....	118	Davis.....	110, 118
Allison.....	117, 118	Broderick.....	113	Deck.....	109
Althouse.....	114	Brown.....	110, 116	Deming.....	118
Ames.....	114	Brusier.....	118	Dennett.....	110, 118
Anderson.....	118	Bunnell.....	108	Dennis.....	119
Antrim.....	119	Bunton.....	103	Denson.....	118, 119
Armstrong.....	118	Burkholder.....	118	Dewing.....	119
Arnold.....	118	Burns.....	118	Dodg.....	119
Arrington(tion).....	108	Burris.....	118	Dodson.....	109
Ashley.....	103	Bussell.....	110	Donevan.....	118
Atwood.....	119	Buttles.....	119	Downing.....	113
Austin.....	110	Caldwell.....	101	Doyle.....	115
Avery.....	118	Callen.....	99, 116	Drake.....	119
Babb.....	108	Camp.....	99, 103	Dugan.....	114
Baker.....	113, 118	Campbell.....	103, 109, 118	Dunning.....	118, 119
Balcom.....	103	Carlton.....	118	Dursey.....	119
Baldwin.....	116, 118	Carpenter.....	119, 120	Duyer.....	119
Ballard.....	113	Carroll.....	118	Eck.....	109
Barber.....	114	Carson.....	110	Eckhart.....	102
Baron.....	119	Carter.....	118	Edge.....	110
Barr.....	108	Case.....	118	Eldriedge.....	113
Barth.....	118	Cetschron.....	118	Elkouri.....	108
Barton.....	109	Chapman.....	118	Ellsworth.....	119
Baster.....	118	Chase.....	120	Emerson.....	119
Baxter.....	118	Clark.....	108, 116, 119, 120	Emmerson.....	116
Beal.....	108	Cobble.....	108	English.....	110
Beasley.....	118	Coburn.....	113	Ericsson.....	109
Bechtel.....	109	Codington.....	118	Eshom.....	108
Bedford.....	118	Coggshell.....	118	Estes.....	118
Beebe.....	118	Cole.....	118	Evans.....	108, 118
Behrens.....	119	Colegate.....	108	Falkenstein.....	119
Bell.....	109	Coleman.....	118	Farha.....	108
Benedict.....	109	Conner.....	110	Feast.....	113
Benton.....	118	Cooley.....	118	Fender.....	108
Berdine.....	108	Cooper.....	118	Ferry.....	118
Biggar.....	118	Corbett.....	116	Fisher.....	114, 115, 116, 119, 120
Bishop.....	109	Cordeiro.....	119, 120	Fitzgerald.....	120
Black.....	116, 118	Cornette.....	110	Fitzpatrick.....	103
Blake.....	119	Cotton.....	102	Fluhrer.....	113
Bluff.....	114	Crahler(?).....	118	Folkers.....	114
Boden.....	110	Craig.....	118, 120	Ford.....	119
Bolte.....	102, 119	Cray.....	119	Forg(?).....	119
Booker.....	118	Crebo.....	118	Forsythe.....	119
Boothe.....	118	Creson.....	109	Foster.....	103
Bosworth.....	110	Crill.....	108	Fraker.....	101, 103, 117
Boughman.....	118	Criss.....	109	Frederiksen.....	109
Bowman.....	118	Crum.....	118	French.....	103
Boyce.....	118	Cummings.....	118	Fuller.....	118, 119

Fulleridor(?).....	119	Johnson	100, 108, 109	McCandless.....	118
Gascoigne	118	Jones	110	McCarty	118
Geer	118	Joseph	114	McConabi.....	118
Gibson	118	Kampling	109	McCullock.....	110
Gilmore.....	114	Keho.....	118	McEvoy.....	110
Glass	108	Kelleper	118	McGee.....	110
Goldberg.....	113	Kennedy.....	113	McGonnell	119
Gorges	113	Kent	118	McIvor.....	116
Gossard.....	117	Ketchma.....	118	McKee.....	120
Graham	113	Knorr.....	114	McKillip.....	119, 120
Grandycan	118	Koehler	119	McLaughlin.....	114
Gray	119	Kohn	119	McLellan.....	118
Green	99	Kolb	108	Mead	99, 117
Gregory.....	114	Krogman	118	Meagher	103, 119
Greiffenstein.....	117, 119	Kullak	120	Medlin	100, 120
Gresl	109	Laferty	118	Meeker	118
Gutshenritter(sch.).....	109	Lambe	109	Mehew.....	118
Hahn	109	Lane	108	Menser.....	118
Hall	116, 118	Langel	116	Merrill	120
Hamm	113, 114	Laughlin.....	118	Metice	118
Harmon.....	109	Leach	118	Metzer	118
Harris.....	100, 108, 116, 118	Ledbetter	108	Miller	119
Harrison.....	118	Lee	116	Millis	120
Hartwell.....	119	Leusch.....	108	Miner.....	118
Haslett.....	118	Lewis	108	Mitchell	119
Hatfield.....	108, 119	Light.....	114	Money	114
Hatton	120	Lincoln.....	120	Moody	110
Hays.....	99, 120	Lindsay	109	Mooney	118
Haywood	118	Lippe.....	102	Moore.....	99, 101, 116, 118
Heath	118	Liston	110	Moracey	119
Hendrickson.....	102, 118	Little.....	115	Morehead	108
Henrie	118	Longwell.....	118	Morehouse.....	119
Henry	119	Luhn.....	118	Morgan.....	118
Hermes.....	109	M'Cenachie.....	118	Morris.....	110
Hicks.....	120	Mabland	118	Moser	102
Higginbotham.....	117	Madigan	110	Mullenneix	108
Higgins	108	Magan	118	Murdock.....	100
Hill.....	108, 119	Mahlandt.....	118	Murphy.....	118
Hills	116	Mahodmot.....	118	Napolian.....	108
Hitchett.....	118	Maixner.....	110	Neely	119
Hobbs	119	Manama	103	Nessly.....	99, 103
Hobson.....	100, 102	Mann.....	109, 115, 119	Newlin.....	114
Hogan	118	Mans	110	Nichols	110
Holm.....	109	Marsh	119	Norton	109, 115
Holmes.....	119	Martin	108, 109	Oatley	116
Hoover	119, 120	Mathews.....	110	O'Brien	114
Hope	116, 118	Mathewson.....	103	Ohmert	119
Howard	114, 118	Matter.....	110	Ojile	110
Howe	118	Matthews	116	Oliver	108
Hubbard.....	118	Maupin.....	118	O'Meara.....	109
Huff	108	Maxfield.....	120	Oswon	120
Hurt.....	108	McAdams.....	119	Owen	100
Jacks	115	McArthur	108	Owens	119, 120
Jackson	118	McCabe.....	115	Palmer	103, 118
Jacobs	119	McCalivy	118	Parcells.....	100, 102
James	118	McCamable.....	118	Parker	113

Index, continued

Parks.....	99	Sargent.....	118	Towers.....	109
Patrick.....	118	Sarver.....	110	Trego.....	114
Patter.....	118	Sayles.....	119	Trickey.....	99
Patterson.....	108, 118	Saylor.....	118	Trimble.....	114
Paul.....	99	Schattner.....	119, 120	True.....	118, 119
Pauly.....	109	Schneider.....	109	Tucker.....	116, 117
Payne.....	109	Schnell.....	99, 116	Turnbaugh.....	119
Pearce.....	119	Schring.....	118	Turner.....	119
Peck.....	118, 119	Schweiter.....	115	Tyrrell.....	119
Pendergrass.....	118	Scott.....	103	Vachal.....	110
Peter.....	100	Sheanon.....	120	Van Trees.....	120
Philips(Ilips).....	109	Sheldon.....	108	VanDoren.....	113
Phillips.....	108, 116	Sherman.....	119	Vanhorn.....	118
Pierce.....	118, 120	Sherrick.....	110	Vedder.....	109, 118
Pierson.....	119	Shirlie.....	109	Vigus.....	102
Pillsbury.....	99	Shively.....	110	Villes.....	109
Pinnick.....	110	Shlichter.....	116	Wah.....	103
Pirtle.....	109	Shoff.....	113	Wake.....	109
Pittenger.....	119	Shope.....	100	Walker.....	100, 118
Porter.....	109, 119	Shreve.....	110	Walters.....	110
Pride.....	119	Silver.....	118	Walthall.....	108
Pulling.....	110	Simes.....	109	Ward.....	118
Pulson.....	109	Slattery.....	110	Warren.....	102
Ramlow.....	99	Sloan.....	118	Watson.....	119
Ramser.....	113	Smith..	102, 108, 110, 114, 117, 118, 119	Wattles.....	114
Raple.....	109	Springob.....	118, 119	Way.....	109
Rausch.....	109	St. John.....	113	Webb.....	103
Read.....	119	Stafford.....	119	Weidman.....	120
Redfield.....	100	Steele.....	99, 102	West.....	109, 115, 116, 118, 119
Reed.....	118	Stem.....	120	Wettig.....	118
Reeves.....	115, 116, 118, 119	Stevens.....	109	Whitaker.....	109
Reimers.....	119	Stone.....	112	White.....	115, 119
Resing.....	108	Stratton.....	119	Whitehead.....	114
Rhinehart.....	118	Street.....	116	Whitney.....	114
Rich.....	108	Streeter.....	118	Whitsitt.....	110
Rickey.....	118	Stribbling.....	101	Whitted.....	110
Riggs.....	101, 116	Summers.....	119	Williams.....	109, 110, 119
Robinson.....	118	Surtees.....	110	Wills.....	114
Rockey.....	118	Swaney.....	114	Willson.....	118, 119
Rogers.....	108, 110, 113, 118	Swernbergh.....	100	Wilson.....	110
Ross.....	115	Swingle.....	118	Wisner.....	109
Rossington.....	118	Talbott.....	108	Witturn.....	118
Roulet.....	113	Tatum.....	118	Woods.....	114
Rowles.....	109	Taylor.....	109, 111	Worshell.....	119
Royal.....	115, 119, 120	Thayer.....	114	Wreath.....	109
Runyon.....	109	Thomas.....	113, 117	Wright.....	109, 119
Rush.....	108	Thompson.....	108, 110, 119	Wyckoff.....	118
Russell.....	114, 116	Throckmorton.....	113	Young.....	118
Ruthrauff.....	108	Titsworth.....	101	Zeigler.....	114
Sampsell.....	110	Todd.....	115, 116, 119, 120	Zimmerly.....	116
Sanders.....	118				





Midwest Historical & Genealogical Society, Inc.

RENEWAL IS DUE BEFORE APRIL 1 FOR THE NEW YEAR

New Membership Application April 1 _____ - March 31 _____

New: ☐ Member # _____ ☐ Co Member # _____

Date _____ Renewal: ☐ Member # _____ ☐ Co Member # _____

Office Use Only

Check # _____

Date _____

Entered into Data Base

Date _____

Member Name: _____ Maiden Name: _____

Co-Member Name _____ Maiden Name: _____

Address: _____

City: _____ State: _____ Zip: _____ - _____

Area Code and Phone Number: (____) _____

Email address: _____

Occupation: _____

(If retired, please also indicate occupation before retirement)

_____ **New members** please initial here to give permission to publish name, address, phone number, and email address in the *REGISTER* (Quarterly Publication)

► **Monthly Alert** send : Paper ☐ OR Email ☐

Membership Category:

- ☐ Individual – Basic \$25.00
- ☐ Individual – Gold \$40.00
- ☐ Co-member -Basic \$30.00
- ☐ Co-member – Gold \$45.00
- ☐ Sustaining \$50.00
- ☐ Student under 17 - Basic \$10.00
- ☐ Student under 17 – Gold \$20.00
- ☐ Life: Individual \$300.00
- ☐ Life: Co-members \$500.00
- ☐ Life: Benefactor \$800.00
- ☐ Library / Society Basic \$15.00
- ☐ Library / Society Gold \$25.00
- ☐ Gift Donation \$ _____

Basic Membership includes Electronic Publications

Gold Membership includes Printed

Surnames Researching:

States Researching:

Ideas for presentations, programs, or classes:

NOTE: MHGS is a 501(c) 3 organization. Gift Donations are Tax Deductible to extent allowed by law

Age Group:

- ☐ under 18
- ☐ 18 – 24
- ☐ 25 – 39
- ☐ 40 – 64
- ☐ 65 – 79
- ☐ 80 and up

I would like to learn more about volunteering at MHGS in the following areas:

- ☐ Library (assistant librarian, greeter, file books, etc)
- ☐ Programs (develop/teach/assist presentations, classes, etc)
- ☐ Publications (monthly newsletter and quarterly)
- ☐ Ways & Means (money making projects, fundraising, etc)
- ☐ Building & Grounds (maintenance, cleaning inside/outside, etc)
- ☐ Other area: _____

PUBLICATION ORDER FORM

Name _____

Address _____

City, State, Zip _____

Tax exemption number, if applicable _____

Publication Number/Title	Qty.	Unit Price	Total Price

Make check payable to, and mail to:

Midwest Historical and Genealogical Society
PO Box 1121
Wichita, KS 67201-1121

POSTAGE/ HANDLING (see chart below)	
SUBTOTAL	
* ‡ KS SALES TAX (if applicable) ____ %	
TOTAL DUE	

SHIPPING AND HANDLING CHART

Merchandise Total	Shipping Charge
\$0.01 - \$24.99	\$4.00
\$25.00 - \$49.99	\$5.00
\$50.00 - \$99.99	\$7.00
\$100.00 - \$299.99	\$12.00
For each \$100.00 of merchandise above \$300.00, add \$4.00 to the \$12.00	

‡ Sales tax applies to Kansas destinations only; tax is the % rate at the delivered destination.

* If you are tax exempt send copy of exemption certificate with order.

Tax Exempt # _____



MIDWEST HISTORICAL AND GENEALOGICAL SOCIETY

PUBLICATIONS FOR SALE

Use order blank on last page to order

Pub #	Publication Title	Price
Wichita and Sedgwick County, KS		
101	History of Wichita and Sedgwick Co., KS. Past and Present, 1910, Vols. 1 and 2 in one book, reprint, 956 pgs., indexed. (hardbound)	\$45.00
21	Wichita City Death Certificates from the City Directory and cemeteries (1887-1899). Indexed, 304 pgs.	\$35.00
22	Flanagan-Hunt Mortuary Records, Vol I, Apr 16, 1912 - Apr 15, 1915, 150 pgs.	\$20.00
23	Flanagan-Hunt Mortuary Records, Vol II, Apr 1915 - Nov 1917, 150 pgs.	\$20.00
29	Wichita Fire Fighters 1881-1981 (History & Personnel Records), 158 pgs	\$20.00
24	1878 Wichita City Directory names, 34 pgs	\$6.00
25	1883 Wichita City Directory names, 72 pgs	\$10.00
26	1885 Wichita City Directory names, 114 pgs	\$15.00
27	1886/7, 1894, 1900 Wichita Business Directories, 75 pgs. Compiled by Barbara Marsh.	\$10.00
49	Abstracts of Marriages, Deaths, and other news items from Wichita newspapers and KS census records. Sept 1 to 6, 1879; and Sept 1, 1884 to Mar 31, 1885. Compiled by Jerry Stout. 94 pgs., indexed	\$15.00
2	Sedgwick Co., KS Marriage Records Book 1, 204 pgs, County Books #A-D, May 7, 1870 - Oct 22, 1889, index. Compiled by Bill Pennington	\$25.00
3	Sedgwick Co., KS Marriage Records Book 2, 213 pgs, County Books #E-H, Oct 22, 1889 - Jul 13, 1901, index. Compiled by Bill Pennington	\$25.00
4	Sedgwick Co., KS Marriage Records Book 3, 212 pgs, County Books #I-L, Jul 15, 1901 - Nov 11, 1908, index. Compiled by Bill Pennington	\$25.00
5	Sedgwick Co., KS Marriage Records Book 4, 189 pgs, County Books #M-P, Nov 11, 1908 - Jan 22, 1913, index. Compiled by Bill Pennington	\$25.00
6	Sedgwick Co., KS Marriage Records Book 5, 214 pgs, County Books #Q-T, Jan 18, 1913 - Sept 21, 1917, index. Compiled by Bill Pennington	\$25.00
7	Sedgwick Co., KS Marriage Records Book 6, 185 pgs, County Books #U-X, Sept 22, 1917 - Aug 4, 1920, index. Compiled by Bill Pennington	\$25.00
19	Sedgwick Co., KS Marriage Records Book 7, 253 pgs, County Books #Y-BB, Aug 4, 1920 - May 17, 1924, index. Compiled by Bill Pennington	\$25.00
20	Sedgwick Co., KS Marriage Records Book 8, 215 pgs, County Books #CC-FF, May 19, 1924 - Dec 1, 1928, index. Compiled by Bill Pennington	\$25.00
70	Sedgwick Co., KS Marriage Records Book 9, 192 pgs, County Books #GG-JJ, Dec 1, 1928 - Nov 25, 1933, index. Compiled by Bill Pennington & Kimberly Rix	\$25.00
72	Sedgwick Co., KS Marriage Records Book 10, 196 pgs, County Books #KK-NN, Nov 25, 1933 - Aug 22, 1938, index. Compiled by Bill Pennington & Diana Miller	\$25.00
73	Sedgwick Co., KS Marriage Records Book 11, 196 pgs, County Books #OO-QQ, Aug 22, 1938 - Dec 27, 1941, index. Compiled by Bill Pennington & Diana Miller	\$25.00
28	1888 & 1891 Sedgwick Co., KS Directory Names, 20 pgs. (Wichita not included)	\$5.00
30	1903/4 Sedgwick Co., KS Directory Names, 39 pgs.	\$6.00
33	Sedgwick Co., KS Naturalizations and Declarations of Intentions, 1870 - 1906, 93 pgs. Compiled by Barbara Marsh	\$12.00
9	Index to Portrait and Biographical Album of Sedgwick Co., 1888, 166 pgs.	\$22.00
10	Area Keys: Sedgwick Co, KS, 52 pgs.	\$7.00
58	Sedgwick Co., KS Landowners & Tenants Directory, 1971, 52 pgs.	\$7.00
60	Obituaries from the Wichita Beacon Nov 2, 1885 - Jun 11, 1886, 14 pgs.	\$4.00
11	List of Cemeteries in Sedgwick Co., KS, w/map, 1981, 7 pgs.	\$4.00
71	Probate Index-18th Judicial District, Sedgwick Co., KS-1870 to Nov 1917	\$25.00
Butler County, KS		
38	Butler Co., KS Wills 1869 - 1901, 60 pgs.	\$10.00
36	Area Keys, Butler Co., KS, 50 pgs.	\$7.00
37	Butler Co., KS Marriages 1861 - 1885, 74 pgs.	\$10.00

MIDWEST HISTORICAL & GENEALOGICAL SOCIETY, INC.
 PO BOX 1121
 WICHITA, KANSAS 67201-1121

Change Service Requested

Publications for Sale, Continued

Pub #	Publication Title	Price
Chautauqua County, KS		
47	Chautauqua Co., KS Marriage Records, Book 1, County Books #A-D, index, 103 pgs, Jun 5, 1870 - Dec 29, 1891. Compiled by Charlotte Bennett	\$15.00
48	Chautauqua Co., KS Marriage Records, Book 2, County Books #E-H, index, 86 pgs, Jan 6, 1892 - Aug 22, 1905. Compiled by Charlotte Bennett	\$15.00
48A	Chautauqua Co., KS Marriage Records, Book 3, County Books #I-L, index, 112 pgs, Aug 22, 1905 - Apr 25, 1926.	\$15.00
50	Chautauqua Co., KS Marriages and Deaths From CEDAR VALE COMMERCIAL, Dec 1984 - Dec 1985, 12 pgs.	\$5.00
Harvey County, KS		
39	Harvey Co., KS Marriages 1872 - 1895, 120 pgs	\$15.00
52	Harvey Co., KS Marriages 1896 - Apr 24, 1898, index, 21 pgs	\$5.00
51	Deaths, Marriages and Births from Newton, KS local newspapers, selected from 1887 - 1888, 1892 - 1894, 1901 - 1902, 1915. 94 pgs, indexed.	\$25.00
Sumner County, KS		
41	Argonia Cemetery Index, Sumner Co., KS, 47 pgs.	\$6.00
203	Tombstone Inscriptions, Sumner Co., KS (hardbound), 406 pgs. Compiled by Robert Brady.	\$45.00
42	Sumner Co., KS Marriages, Book A, 1871 - 1880, index, 34 pgs. Compiled by Barbara Marsh.	\$6.00
59	Index to Sumner Co., KS Portraits & Biographical Album, 35 pgs.	\$6.00
204	Caldwell Cemetery, Sumner Co., KS (hardbound), 227 pgs, Dilmond D. & Evelyn I. (Sturm) Postlewait	\$45.00
Territorial Kansas		
44	Kansas Territorial Marriages, 1854 - 1861, 24 pgs.	\$6.00
43	Kansas Territorial Deaths, 1854 - 1861, 21 pgs.	\$6.00
62	Kansas Marriages, Births & Deaths Before 1854, 48 pgs.	\$10.00
Midwest Historical & Genealogical Society		
104	Past Issues of the MHGS REGISTER Any three issues.	\$2.50 \$6.00
53	Topical Index of MHGS REGISTER, Vols I -XXXI, 27 pgs.	\$3.00
105	Historical Buildings Note Cards, packet of 4, one each of original sketches of the Wichita post office, livestock exchange, Missouri Pacific depot, and the Santa Fe station	\$6.00
Midwest Area		
201	Index of Grant Co., OK Land Patents, 112 pgs (hardbound) with maps. Dilmond D. & Evelyn I. (Sturm) Postlewait	\$25.00