

MIDWEST Historical and Genealogical REGISTER



**Celebrating
50 Years**

***VOL. 50, No. 1
APR-MAY-JUN, 2015
WICHITA, KS***

MIDWEST HISTORICAL & GENEALOGICAL SOCIETY, INC.

P.O. BOX 1121, WICHITA, KANSAS 67201

<http://mhgswichita.org>

info@mhgswichita.org

(316) 264-3611

ISSN 0271-8685

BOARD OF DIRECTORS

President Elaine Sunde president@mhgswichita.org
Vice-President Ann Hathaway Boll programs@mhgswichita.org
Secretary Twila Brown secretary@mhgswichita.org
Treasurer Jim Scharnhorst treasurer@mhgswichita.org
Librarian Julia Langel library@mhgswichita.org

COMMITTEE CHAIRS

Alert Editor Lucille Williams alert@mhgswichita.org
Building and Grounds **OPEN** info@mhgswichita.org
Membership Bev Jackson members@mhgswichita.org
Publicity Francene Sharp publicity@mhgswichita.org
Register Editor Ann Hathaway Boll register@mhgswichita.org
Technology Vincent Hancock tech@mhgswichita.org



The MIDWEST HISTORICAL & GENEALOGICAL SOCIETY, INC.

is a non-profit, educational organization

with a research library located at 1203 North Main, Wichita, Kansas.

Hours are 9:00 AM to 4:00 PM Saturdays and Tuesdays, unless otherwise notified.

Correspondence with the Society should be mailed to PO Box 1121, Wichita, KS, 67201.

Address membership dues to the attention of the Membership Chairman.

Cover drawing by Charles Sanderson

House drawing by Sharon Korst

The Register is published quarterly by the Midwest Historical & Genealogical Society, Inc. to provide information about genealogy and regional history to its members and interested parties.

Publication mailing dates: May 15, August 15, November 15, and February 15.

Back Issues: Recent issues are available for \$2.50 each, postpaid.

Membership: Includes one issue of the Register each quarter. Dues received after the publication date will receive back issues for that year with the next regular mailing.

Membership Year –

April 1 through March 31

Student (17 & under)\$10.00 / \$20.00
Libraries\$20.00 / \$40.00
Individuals\$25.00 / \$40.00
Couples\$30.00 / \$45.00
Sustaining\$50.00

Lifetime Membership Fees

One time only

Life (single).....\$300.00
Life (couple)\$500.00
Benefactor.....\$800.00

Queries: Members may submit two queries per issue. Non-member queries are \$1.50 each or \$2.50 with a copy of the Register in which the query appears.

Submissions: Send queries and articles for publication to MHGS, Attn: Quarterly Editor. Include the date and your signature with "permission to publish."

All material for publication is subject to editing. Every effort is made to publish accurate material. Midwest Historical & Genealogical Society, Inc. and the Editor will not assume responsibility for errors on the part of the contributor. We are not responsible for publishing rights of contributed material. MHGS does not buy articles for publication.

Advertising: Ad space is sold in 2½" x 2½" block units, 12 blocks per page. Cost for a single block is \$5.00 per issue. Contact the Editor for additional information.

Library/Office Location: 1203 N. Main, Wichita, Kansas, 67203, (316) 264-3611

REGISTER

A Magazine for members and friends interested in Genealogy

Volume 50 No. 1

APR-MAY-JUN 2015

Table Of Contents

ED. NOTE:.....	2
JARVIS PEDIGREE CHART.....	3
THE WICHITA WEEKLY EAGLE.....	4
NEW MATERIALS IN THE WICHITA PUBLIC LIBRARY.....	8
MARRIAGE RECORDS.....	10
WICHITA HISTORICAL PANEL NO. 90.....	14
WICHITA HISTORICAL PANEL NO. 91.....	15
18TH JUDICIAL DISTRICT PROBATE INDEX.....	16
NEW MATERIALS IN THE MHGS LIBRARY.....	20
THE WICHITA WEEKLY EAGLE.....	24
UPCOMING MHGS EVENTS.....	28
INDEX.....	29
PUBLICATION ORDER FORM.....	32

Library/Office Location:

1203 N. Main
Wichita, Kansas 67203
(316) 264-3611

Ed. Note:

Well, here I am again, late as usual! Life has been very trying (I know, I'm very trying!) so far this year, and I appreciate your patience with me. As the saying goes, I just wish God didn't trust me so much! That said, life is good, I'm on the 'sky' side of the dirt, moving on...

I hope you took a look at the cover of this issue of the *Register* before you opened it up to get to all the good stuff... MHGS is celebrating 50 years of helping people find their ancestors! Now I don't think any of you have been around for all those 50 years, so I want to point out we wouldn't be here today without those dedicated people who guided and supported MHGS through the years. Every time I step into the library, I am reminded of those hardworking volunteers who helped move the Dester house to its current location and renovated the entire structure so the irreplaceable records and documents we have on hand are safe and available to the public. Then there are the volunteers who have spent billions and billions (as Carl Sagan would say) of hours indexing those records and documents so the public can sit down at a computer and call up those indices on the Internet from anywhere in the world. Compared to the methods the founders of MHGS had to use to research their ancestors, I am almost embarrassed at how easy we have it today. Not that everything we need in order to find all those ancestors are available on the Internet - only about 15% of all records and books are available in digital form today - so don't abandon that paper trail just yet! Anyway, my thanks to all those who have helped MHGS become the wonderful organization it is today, and I am confident MHGS will continue to grow and improve over the next 50 years.

Have you checked out the MHGS website recently? It's still a work in progress, but we can now process your membership online! You can use a credit card for a new membership, or a renewal! How awesome is that!! Just go to the MHGS website (mhgswichita.org) and select the 'Become A Member' block on the left-hand side of the webpage, then scroll down and click on the 'apply online' link. That takes you to a webpage you need to fill out so we know who you are, then click on the 'Next' button at the bottom of that page to fill out your payment information. Easy peasy! We are working on the next step, being able to order publications and copies online, but please don't hold your breath, this is going to be way more complicated than the membership thing. We'll get there, though, it's just going to take us a bit of time.

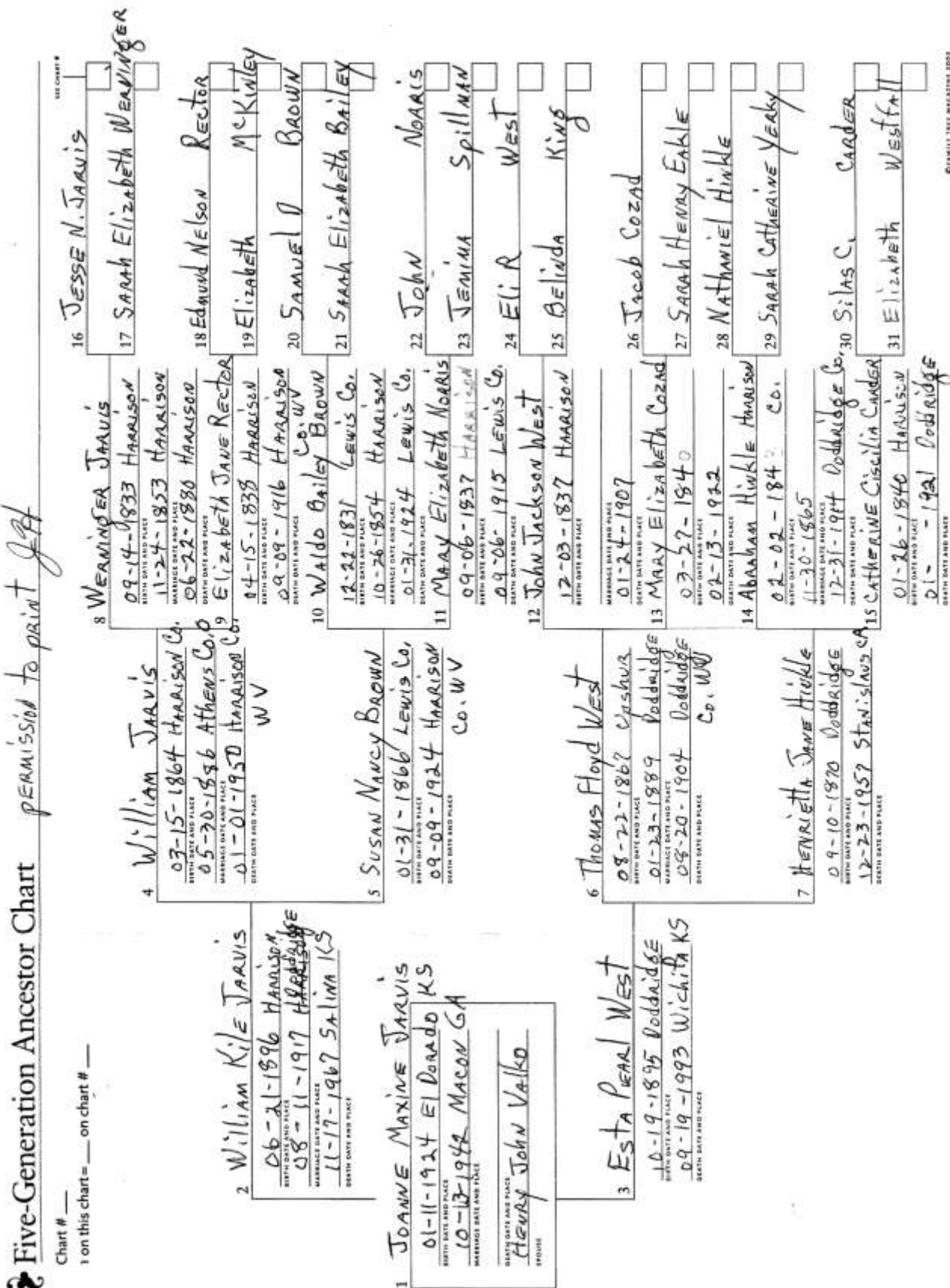
The White Chapel Cemetery Project is an interesting project by MHGS... we are in the process of photographing all the markers in the cemetery and uploading them to BillionGraves using their application. According to BillionGraves, there are now over 17,000 images that have been uploaded for White Chapel Cemetery, but there are still more markers to photograph! If you can help with this project, the team is out at the cemetery every Monday from 9 AM to 10 AM, unless the weather is bad or it's too hot. If you need more information, please contact the library by phone (316-264-3611) or email (info@library.org). This project has special meaning for me because my father is buried there... thanks, Team White Chapel!



I think that's all I have to say for this issue... again, my thanks for your patience with me. Happy Fourth of July and safe travels if you're going out of town over the holiday! See you again in the fall!

Ann Hathaway Boll
Register Editor
register@mhgswichita.org

Jarvis Pedigree Chart



The Wichita Weekly Eagle

Friday, 30 October 1872, page 3

Column 1

CITY AND COUNTY NEWS.

The waters in the Big Muddy are still falling.

The Empire House has printed bills of fare.

The brick laying on the new bank building is completed.

Our candidates are all busy making calls on the dear people.

Long trains of emigrant wagons pass through our streets daily.

California pears are selling in this market at six dollars a dozen.

The postoffice at Dry Creek, in this county, has been discontinued.

The Presbyterians have a fine choir, conducted by Mr. Caldwell.

Poff is dragging out of the Little river the choicest fish by the cart load.

The taxes of the city on real estate, including sidewalks, area \$24,898.87.

Another "man-trap" has just been built in West Wichita and is in full blast.

The Rentfrow troupe was well received, judging from the large attendance.

Tom Conklyn is building a nice little cottage on Lawrence avenue, near Douglas.

B. Haywood offers special inducements to those wishing furniture. See his special.

A vein of coal eight inches thick has been discovered in the northern part of the county.

The polls in Wichita township will be held at Mr. Daniel Hoover's, which the people will recollect.

Martsof, contractor and builder, has moved his office and shop to his building opposite the Empire House.

The experiment tried on the raising of cotton and tobacco in this county has proven entirely satisfactory.

There are said to be a few quarter sections in the western part of this county that are yet unoccupied, or not taken.

The county commissioners met last Saturday, at which session some very important business was transacted.

They had a snow storm in New York this week, while we are having a beautiful Indian summer, with seldom a frost.

Hon. Thomas Murphy, one of Atchison's most prominent men, and one of the leading men of the state, spent a few hours in our city this week.

J. Exton has made arrangements by which he will receive eighteen car loads of coal per week, which he thinks will meet the demand for the present.

Smith Riley¹, of Eldridge, called on us this week, and reports everything prospering. He gave us two dollars in exchange for a feather of the "EAGLE."

We learn that Col. Knapp, who is one of the finest orators in the southwest, will address the people of Wellington next Saturday night. We hope to be there.

Mr. Davidson, formerly of Cuba, New York, one of the large property holders of this city, has returned with his family and intends making this his future home.

Stone coal has advanced to \$9 per ton in this market, and is not selling for sixteen cents per bushel, as stated by some papers in the state. Wood is worth \$5 per cord.

Mr. George S. Henry request us to inform his friends and the public generally that he has not withdrawn from the contest for district clerk, and don't intend to.

Our band was out in the band wagon Saturday, drawn by six white horses, and gave our citizens a general serenade. Their music is pronounced by all to be splendid.

The new brick residence of N. A. English is progressing rapidly this fine weather. The location is well chosen, and the new home will be surrounded by ample grounds.

H. Bolte has some beautiful parlor and bedroom sets, in fact everything, almost, in the furniture line,

¹ Smith Riley was born about 1818 in Pennsylvania; he is listed in Sedgwick County in the 1880 Federal census and the 1875 and 1885 Kansas census. He married Elizabeth (Ross) McVicker on 29 June 1873 in Sedgwick County; she appears to have been his third wife.

which he sells at low figures, believing in the motto of "live and let live."

H. F. Rhodes², of Union township, brings to the Eagle office a turnip weighing seven pounds and three ounces. How is that for a production of the great American desert?

The new law firm of Sluss³ & Dyer⁴ have been adding largely to their law library of late, until they now possess one of the best collection of legal works to be found in Southern Kansas.

A few of the opposing party candidates are holding joint discussions at different places in the county, which are said to be very interesting – order and good feeling, characterizing all their discussions.

PERSONAL. – Mr. E. T. Branson, Hiram Rothwell and C. C. Wheeler, new men in this state, at present stopping at Belle Plaine, called this week. They are all exceedingly well pleased with Kansas.

Shlichter & Russell have the contract and are putting in the pumps or drive wells ordered by the city council – five of them on Main street and one on Douglas avenue. They are to be used in case of fire.

Drs. Oatley and Street have entered into a co-partnership for the purpose of practicing in their profession. All calls left at their office, near the corner of Main and Second streets, or Hill's drug store, will be promptly attended to.

The contracts for sidewalks will be all completed within a week or so, and when completed all the

business portion of the city, as also the depot, churches, school house, and many private residences will be accessible in any weather.

Subscribers to the EAGLE will please make all due allowance for the shortcomings of this issue. The editor away, and a perfect rush for job work and election tickets, have compelled us to make the first apology ever appearing in this paper.

Bills are out announcing a meeting in Lincoln township on Saturday night. It will be addressed by several candidates. Through some misunderstanding, the meeting appointed there for last Saturday night failed for the want of speakers.

The stately residence of William Greiffenstein, on Water street, is enclosed. In artistic design it will present a fine appearance, while it is commodious and very substantially built. It is a frame and at another time we will give a complete description of it.

The grand minstrel entertainment which is billed for Saturday night at Eagle Hall promises to be the finest of the season, given as a joint benefit to Eugene Schattner and George Henry, assisted by John Redden and others, which is a sufficient guaranty that it will be good.

Colonel St Clair, of Belle Plaine, Sumner county, paid our city a visit this week. The colonel is sanguine of the general success of our ticket. Being an old wheel-horse in the party, he says it is amusing to hear the ridiculous stories that are set afloat by a certain candidate in this district and his friends.

Vol. 1, number 1, of the Solomon City *Newspaper*, comes to our office this week among the exchanges, published at Solomon City by H. N. and J. W. Farey. It is truly [sic] a newsy newspaper, and the mechanical execution is splendid. H. N. and J. W. are both practical printers, and good men, and we with them success in their new enterprise.

Dr. Logan, of Leavenworth, and D. B. Emmert⁵, of Humboldt, addressed a large audience at Eagle

² Probably Henry F. Rhodes, who was born 5 January 1844 in Illinois. He married Caroline (Carrie) Johnson in Stark County, Illinois on 15 June 1864. He died 12 November 1913 and is buried in Oakland Cemetery, Lee County, Iowa.

³ Henry Clay Sluss was born 29 June 1842 and died 3 Aug 1926; he is buried in Highland Cemetery. He came to Kansas between the 1870 Federal census, when he was still living in Douglas County, Illinois with his parents and siblings, and June 1871. He married Alice A. Green on 2 Dec 1873 in Wichita; she was born in November 1854 in Indiana and died 17 Oct 1916 in Wichita. Henry married Grace A. Hill (b. 6 July 1861 in Washington County, New York) on 3 July 1918; she died 3 May 1919 and is also buried in Highland Cemetery. Mr. Sluss was a lawyer, judge, and state senator during his lifetime.

⁴ James Lilburn Dyer was born in Granger County, Tennessee on 9 August 1839; he married Mattie C. Boston on 12 June 1865 in Morgan County, Illinois. Mattie was born 4 May 1844 in Cass County, Illinois and died of consumption 14 November 1883 in Sedgwick County. Both are buried in Highland Cemetery.

⁵ David B. Emmert (born 1 August 1836 in Cumberland County, Pennsylvania) came to Topeka by August 1859, and registered for the Civil War draft at Fort Scott in Bourbon County, Kansas in the fall of 1863. David married Margaret D. Moffett in Carroll County, Illinois on 29 December 1863. He and his family were living in Humboldt, Allen County at the time of the 1870 Federal census; the 1875 Kansas census shows them living in Topeka. By the 1880 Federal census they were living in Wichita, but David died in Albuquerque, New Mexico on 10 June 1884.

hall, in this city, on Thursday night last. Mr. Logan is a profound reasoner and a fine speaker. Mr. Emmert's speech was forcible and energetic, interspersed with practical jokes and happy hits. Both speeches were good and were well received.

Column 2

The character of the improvements made upon the farms in this portion of the state is far superior, generally speaking, to those in the northern and central portions of Kansas. To a casual observer it would appear that the people who settled in this, the garden spot of Kansas, were actuated by different motives and impulses from those who came to Kansas in an earlier day and took possession of the older portions of the state. Either this, or our people are a more enterprising, intelligent and capable, or had more means at their command. Probably all of these conclusions are correct. At any rate, it is a fact that the class of farm improvements in our valleys are far superior, home-like and more permanent than like improvements in other counties north and east. In traveling over the high prairies between the Arkansas valley and those of the Walnut, White-water and other streams in this section, one is completely surprised to find that in two or three years time farms have been opened up, with growing orchards, commodious barns, and in hundreds of instances, fine frame houses, thoroughly painted, adorned with green blinds and surrounded with choice shrubbery. We can only account for this wide difference upon the hypothesis that our settlers are made up principally of that class which comes after or follows the frontier element that first take possession of a new county as mere squatters, who expected to sell out and move on. The result is easily foretold. In all that goes to make a country valuable in wealth and desirable in civilization, Southwestern Kansas will lead the earlier settled portions of the state, where nine-tenths of the land is even yet held by non-residents for purely speculative purposes. We were led to jot down this idea from what we have noticed the past week in campaigning around. It may prove an item of interest to those who contemplate coming to Southwestern Kansas, the garden spot of the state.

In our great haste in writing up, entirely from memory, our report of the concert and amateur performance last week, we unintentionally failed to

make mention of some of the principal performers in the charade of Petroleum. The leading character, Aminadab Stanley, was performed by Mr. W. E. Stanley, with ease and ability, showing that he was at home before a public audience. Mr. Stanley is the superintendent of the Methodist Sunday school, and an active member of the church. As to the character of Mrs. Leum, represented by Mrs. L. M. Hall, nobody could take any exception. She also represented the leading character in the tableaux [sic] entitled "the wedding ring," and in the charade entitled matrimony. Ellen, her youngest daughter, was personified by Emma Hills, with grace and ease. Miss Hills also performed with Miss Pittenger a piano duet, the execution of which was highly artistic.

The *Beacon* wisely urges the erection of dwelling houses, for rent, as a sure and profitable investment. It also talks, in a sensible and practical way, of Wichita as a superior point for the erection of manufactories. We heartily second our contemporary in its ideas, and in its advocacy of these things. Politics are good in their time – interesting and exciting for the day – but the local interests of our town, county and people are far more vital and far more worthy the efforts and attention of local journals. Upon these interests, that tend to build up a city, that promise the development of this great county, we hope to always work in harmony with our neighbor, the *Beacon*.

Our lonely autumn, with its soft shadowy days of mournful music, made by the sighing winds on the faded praires [sic] and tints of words, was suddenly broken into by sweeping blasts of dust on last Monday. During the evening the glare of lightning lit up the sky and muttering and deep rolling thunder prophesied the end of Indian Summer. Monday night and Tuesday morning find showers of rain fell. Contrary to toe expectations of nearly every one, the weather cleared up yesterday warm and pleasant, and now the prospect is good for weeks more of a "regular Kansas fall."

The Wichita savings bank is another of the solid institutions of our town. From the amount of deposits shown by the sworn statements of the First National Bank of Wichita, it would seem that our other banks would make, in the shape of deposits, a poor show, but so far from that being the fact, we learn that the deposits of the savings bank now reach

\$80,000, which is simply immense when we take into consideration the fact that the institution is not yet ninety days old.

N. Baldwin, photograph artist, has some very fine pictures of the bridge, taken from different positions, giving different views of it, any of which are good. Specimens are on exhibition at his gallery, from which you can take your choice and have as many printed as you like. Mr. Baldwin is a good artist, as his work will show. We have a very nice photograph of the bridge and its immediate surroundings in our office, for which Mr. Baldwin will please accept our thanks.

Our last week's article with reference to the establishment of a beef-packing establishment at Wichita has elicited considerable comment and speculation among not only the business men of this place, but of other points. We are of the firm opinion that an investment of that character would prove exceedingly profitable as well as eminently practical. We invite the attention of heavy packers of Leavenworth and Kansas City to this point.

J. F. Reese, the popular and enterprising proprietor of the famous Keystone restaurant, had served up last Sunday a magnificent champagne dinner for his patrons. The tables, it is said, were loaded with all the delicacies and varieties that could be procured, without regard to cost, and those who partook of the repast never tire of telling of it. Mr. Reese, as the proprietor of a first-class restaurant, is a success.

A new tailor shop has been opened on Douglas avenue by Harris & Co. Mr. Harris is an experienced hand at the business, having followed it for twenty-five years. A finer stock of piece goods cannot be found in the state, consisting of French and English cloths and cassimeres, velvet and silk vestings, which they are prepared to make up in the latest styles, on short notice, guaranteeing satisfaction.

Mike Zimmerly has just received a new lot of heating and cooking stoves. He is agent for the celebrated "Active" cooking stove, which is arranged

PHYSICIANS.

C. C. FURLEY. W. T. HENDRICKSON.
HENDRICKSON & FURLEY,
PHYSICIANS AND SURGEONS, Main street,
 near First, Wichita, Kansas. Drs. Hendrickson and Furley having permanently located expect the share of practice their merit deserves, and will always be found at their office when not professionally engaged. Calls will be attended promptly in Wichita and vicinity at any hour, night or day.

DR. C. E. FISHER,
 (Drs. Longsdorf & Fisher.)
HOMEOPATHIC PHYSICIAN and Surgeon.
 Office opposite postoffice, Wichita, Kansas.
 Professional calls promptly obeyed both night and day. 29-1f

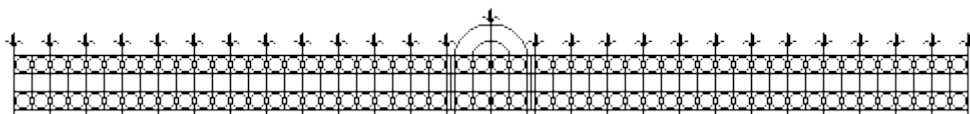
DR. A. J. LONGSDORF,
DENTIST OFFICE No. 79 Topeka avenue,
 Wichita, Kansas. He is prepared to perform all operations on the teeth in the most perfect manner. Teeth inserted, from a single tooth to a full set, and warranted. my 17-3m

ALLEN & FABRIQUE,
 E. B. ALLEN, M. D. A. H. FABRIQUE, M. D.
PHYSICIANS AND SURGEONS. Office at J. P. Allen's drug store, Main street, Wichita.

for burning either coal or wood, and has the largest oven of any stove in the market, with a patent register for regulating the draft. A guaranty is given for full satisfaction in every instance. Mike has a tin shop also in connection with his establishment.

Karatofsky, one of our Main street clothing merchants, has rented Hobson's room, in Eagle block, next to the savings bank, which is being fitted up with shelving and counters in the first class style, and when completed he will be in a large stock of staple and fancy dry goods, hats, caps, boots and shoes, in connection with his clothing and gents' furnishing goods.

The sale of cattle this week has been quite brisk, owing partly to the fact that a great deal of the pasturage has been burned off, and owners are getting anxious to sell. The prices on large beef are unchanged, ranging from two and a half to three. Small beeves are a shade lower, some few sales being made at two. The amount shipped this week has been fifty car loads daily.



NEW MATERIALS IN THE WICHITA PUBLIC LIBRARY

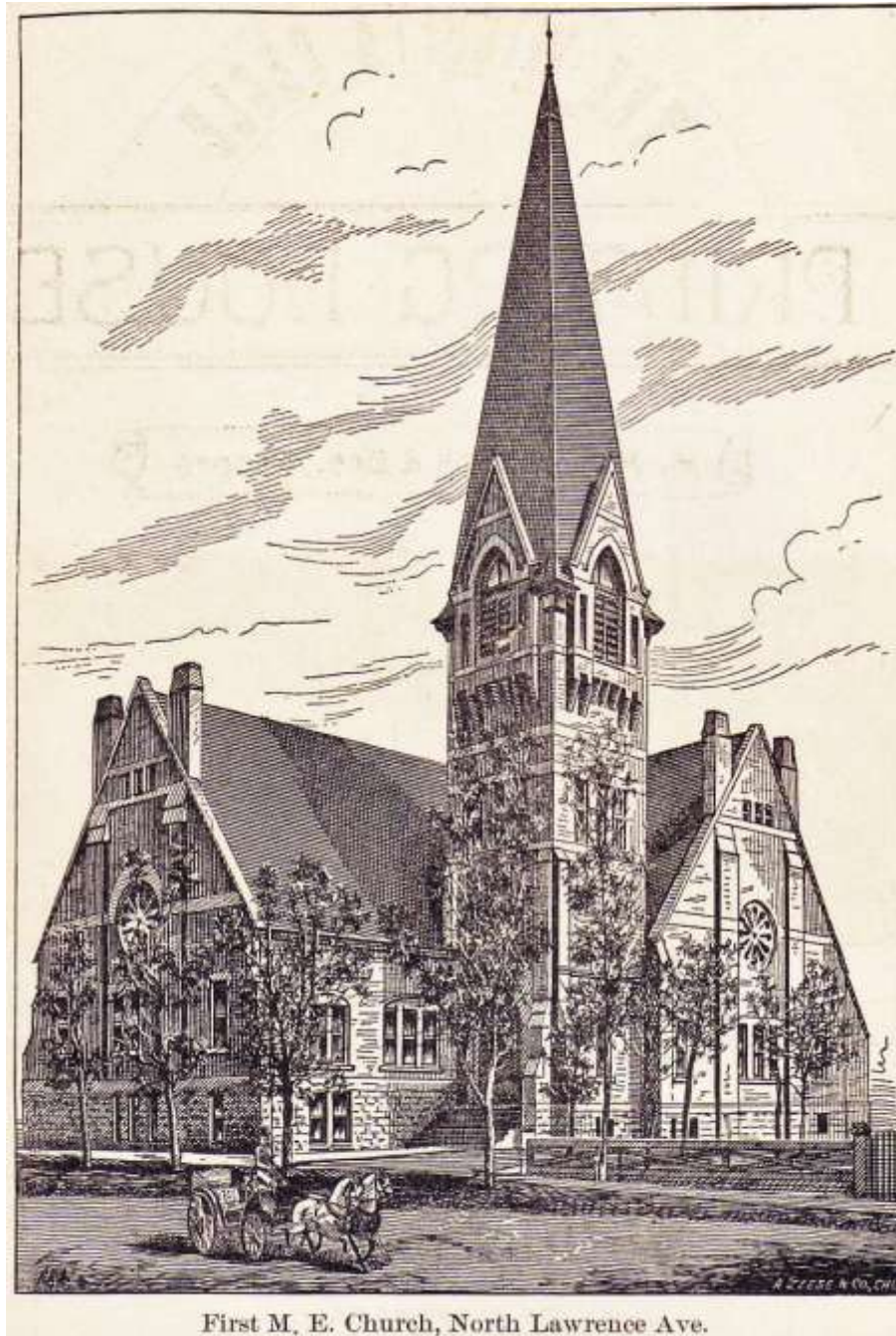
GENEALOGY COLLECTION

January through March, 2015

Compiled by Michelle Enke, Manager of the Wulfmeyer Genealogy Center

1840 Census of Edgar County, Illinois. (R 312 I29E 1840)
1850 Edgar County, Illinois Census. (R 312 I29E 1850)
1850 United States Census Index of Moultrie County, Illinois. (R 312 I29MO 1850)
1860 Census Index of Lawrence County, Arkansas. (R 312 A721L 1860)
1860 United States Census Index of Moultrie County, Illinois. (R 312 I29MO 1860)
1870 Census Index of Sharp County, Arkansas. (R 312 A721S 1870)
1880 Census Index of Lawrence County, Arkansas. (R 312 A721L 1880)
1880 Census Index of Sharp County, Arkansas. (R 312 A721S 1880)
1880 United States Census of Moultrie County, Illinois. (R 312 I29MO 1880 V.1)
30th Anniversary, the Lefors Tornado: March 27th, 1975-2005, Lefors, Texas. (R 976.4827 OLD)
Alphabetical Censuses of Randolph County, Arkansas 1850, 1860, 1870. (R 312 A721RA 1850-1870)
America's Switzerland: Estes Park and Rocky Mountain National Park, the Growth Years.
(R 978.8 PIC)
American Naturalization Records, 1790-1990: What They Are and How to Use Them. (R 323.6 NEW)
Census of Lawrence County, Arkansas, 1870. (R 312 A721L 1870)
Chronicles of Oklahoma. (R 976.605 C557)
City Cemetery Records, Columbus, Kansas. (R 978.199 SCH)
Comanches: a History, 1706-1875. (R 978.004 KAV)
CSS Virginia: Sink Before Surrender. (R 973.75 QUA)
Early History of Evening Shade and Sharp County. (R 976.723 MOO)
Edgar Cemetery, Paris, Edgar Co., Illinois (1858-1872). (R 977.369 BRO)
Edgar County, Illinois, 1860 Federal Population Census Transcription. (R 312 I29E 1860)
Edgar County, Illinois: an Extraction of the 1870 Census. (R 312 I29E 1870)
Edgar County, Illinois, Marriages, 1823-1886. (R 977.369 EDG Vol. 1-3)
Eyewitnesses to the Indian Wars, 1865-1890: Conquering the Southern Plains. (R 973.8 EYE V.3)
Fort Riley, Its Historic Past. (R 355.7 FOR)
Good Connections: a Century of Service by the Men & Women of Southwestern Bell. (R 384.609 PAR)
History of Lake Champlain: a Record of More Than Three Centuries, 1609-1936. (R 974.754 CRO)
History of the One-room Schools of Sharp County: Country School Memories. (R 976.723 HIS)
Huntsville: Where Technology Meets Tradition. (R 976.197 JOI)
Index to Edgar County Illinois Cemetery Records. (R 977.369 CAR)
Keep the Flag to the Front: the Story of the Eighth Kansas Volunteer Infantry. (R 973.7481 MAC F)
Kentucky Marriages, 1797-1865. (R 976.9 CLI)
Lake Champlain: a Guide and Story Handbook. (R 974.754 COP)
Lawrence County, Arkansas Census for 1830, 1840 & 1850. (R 312 A721L 1830-1850)
Locating Your Immigrant Ancestor: a Guide to Naturalization Records. (R 929.1 N338L)
Marriage Records of Oregon County, Missouri. (R 977.8875 MAR V.2 & V.3)
Marriage Records of Sharp County, Arkansas: Southern District, Books C-H, 1880 thru 1910 &
Northern District, Books 1-3, 1893 thru 1910. (R 976.723 WHI)
Monitor Boys: the Crew of the Union's First Ironclad. (R 973.752 QUA)
Moultrie County Marriages: Index to Marriages, 1875-1900. (R 977.3675 DRE V. 3-5)
Muhlenberg County, KY Comprehensive Census Index, 1850-1880. (R 312 K37MU 1850-1880)
My Home on the Range: Frontier Life in the Bad Lands. (R 917.83 JOH)

North Central Arkansas 1870 Census Index: Conway, Fulton, Independence, Izard, Jackson, Lawrence, Marion, Randolph, Searcy, Sharp, Van Buren, White and Woodruff Counties. (R 312 A721N 1870)
Park Cemetery, Columbus, Kansas. (R 978.199 SCH)
Pilcher Family History. (R 929.3 PILCHER)
Randolph County, Arkansas Tax Records, 1839-1860. (R 976.724 KNO)
State & Federal Census of Cherokee County, Kansas, 1855-1875. (R 978.199 KEL)
United States Census 1870, Moultrie County, Illinois. (R 312 I29MO 1870)
Virginia at War, 1862. (R 973.7 VIR)
Who was Who in America: (with world notables). (R 920 W629 2013-2014 V. 25)
Who was Who in America: (with world notables). (R 920 W629 1607-2014 INDEX)



First M. E. Church, North Lawrence Ave.

*From the 1888 Wichita City Directory
Lawrence (now Broadway) between 1st and 2nd Streets*



MARRIAGE RECORDS



Sedgwick County, KS, Book M

<u>Page</u>	<u>Groom/Bride</u>	<u>Residence</u>	<u>Age</u>	<u>Appl. Date</u>	<u>Marriage Date</u>
M251	Bowdish, Ambrose Hoy	Wichita, KS	22		
	Yungmeyer, Lydia A.	Wichita, KS	21	12 May	12 May 1909
M251	Dyer, Henry A.	Harvey Co, KS	39		
	Blake, Lola	Wichita, KS	24	13 May	13 May 1909
M252	Button, Wyman Manoah	Los Angeles, CA	43		
	Prickett, Grace (Mrs.)	Rose Hill, KS	36	14 May	14 May 1909
M252	Wilson, H.H.	Enid, OK	40		
	Fryer, Florence	Wichita, KS	21	14 May	14 May 1909
M253	Chambers, Charles	Newton, KS	21		
	Manhold, Mary	Newton, KS	18	17 May	17 May 1909
M253	Wells, Charles T.	Wichita, KS	42		
	Hamerson, Frances A.	Wichita, KS	35	15 May	16 May 1909
M254	Fisher, Lavant	Wichita, KS	45		
	Penny, Elizabeth	Wichita, KS	52	18 May	18 May 1909
M254	Peck, C.A.	Wichita, KS	40		
	Lebhart, Amelia	Wichita, KS	34	17 May	17 May 1909
M255	Cameron, A.P.	Wichita, KS	28		
	Sherman, Edna	Wichita, KS	21	18 May	18 May 1909
M255	Ebersteine, Alfred D.	Wichita, KS	22		
	Sites, Laura	Wichita, KS	21	18 May	18 May 1909
M256	Daugherty, Edward H.	Wichita, KS	36		
	Burke, Anna L.	Wichita, KS	30	18 May	19 May 1909
M256	Peck, Myrle	Wellington, KS	24		
	Neibuhr, Minnie	Decatur, IL	22	18 May	18 May 1909
M257	Galloup, George B.	Wellington, KS	35		
	Hess, Blanche	Wichita, KS	25	19 May	19 May 1909
M257	Woods, Frank F.	Wichita, KS	29		
	Sullivan, Pearl	Derby, KS	21	19 May	20 May 1909
M258	Doffing, George E.	Colwich, KS	19		
	Lies, Mary	Colwich, KS	17	04 May	18 May 1909
M258	Taylor, William	Wichita, KS	24		
	Traver, Katie	Wichita, KS	19	19 May	19 May 1909
M259	Bunten, Richard M.	Newton, KS	50		
	Bunten, Ada C.	Newton, KS	50	19 May	19 May 1909
M259	Ferguson, Harvey	Wichita, KS	28		
	Pauley, Alice	Wichita, KS	17	19 May	19 May 1909
M260	Arvidson, F.W.	Isabel, KS	35		
	Nichols, Minnie	Chicago, IL	30	20 May	20 May 1909
M260	Scott, Charles A.	Eureka, KS	25		
	Smith, Anna	Wichita, KS	23	20 May	20 May 1909
M261	Attebery, L.P.	Wichita, KS	31		
	Wiggins, Luella	Wichita, KS	20	22 May	22 May 1909
M261	Bush, John T.	Wichita, KS	20		
	Goodwin, Ella Gertrude	Wichita, KS	16	22 May	22 May 1909
M262	Adams, Warren R.	Wichita, KS	42		
	Logerman, Katie L.	Maize, KS	19	22 May	23 May 1909

Marriage Records, continued

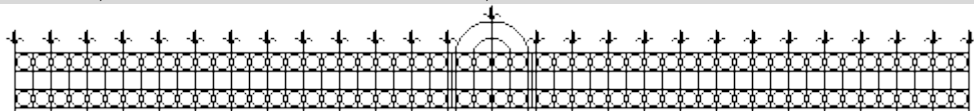
<u>Page</u>	<u>Groom/Bride</u>	<u>Residence</u>	<u>Age</u>	<u>Appl. Date</u>	<u>Marriage Date</u>
M262	Clasen, Rudolph	Andale, KS	25		
	Armbruster, Josephine	Andale, KS	23	22 May	08 Jun 1909
M263	Jackson, Ward	Wichita, KS	21		
	Babb, Grace	Wichita, KS	17	22 May	22 May 1909
M263	Purcell, Joe Marion Jr.	Wichita, KS	23		
	Oyler, Hazel B.	Wichita, KS	17	24 May	25 May 1909
M264	Ellis, B.B.	Oklahoma City, OK	26		
	Walden, Laura	Gate, OK	20	24 May	24 May 1909
M264	Klingman, Albert	Wichita, KS	27		
	Stilts, Ida	Kansas City, MO	28	24 May	24 May 1909
M265	Liming, Jesse	Wichita, KS	30		
	Kelum, Bettie	Wichita, KS	30	24 May	26 May 1909
M265	McAndrews, Thomas	Wichita, KS	29		
	Stubbs, Edith	Wichita, KS	30	24 May	24 May 1909
M266	Bragunier, Thomas	Wichita, KS	29		
	Southwell, Marie	Wichita, KS	24	25 May	25 May 1909
M266	Hardesty, William	Hazelton, KS	26		
	Stewart, Louise	Hazelton, KS	20	25 May	26 May 1909
M267	Scott, Samuel A.	Harper, KS	24		
	Tate, Frances	Wellington, KS	22	25 May	26 May 1909
M267	Thornton, Charles	Wichita, KS	24		
	Craig, Lillian A.	Wichita, KS	23	26 May	26 May 1909
M268	Gibbs, Louis K.	Wichita, KS	24		
	Morris, Edith	Wichita, KS	23	27 May	02 Jun 1909
M268	Roberson, Jesse C.	Wichita, KS	25		
	Hammon, Ida L.	Wichita, KS	35	27 May	27 May 1909
M269	Clifford, B.W.	Mulvane, KS	29		
	Kenoyer, Vene	Leon, KS	29	28 May	28 May 1909
M269	Damon, Henry Burton	Wichita, KS	34		
	Holland, Lena Leota	Wichita, KS	37	28 May	09 Jun 1909
M270	Glines, S. Sylvester	Garden Plain, KS	36		
	Freeland, Lena	Garden Plain, KS	23	29 May	30 May 1909
M270	Hudson, Paul L.	Nevada, MO	36		
	Cline, Wealtha	Wichita, KS	34	29 May	30 May 1909
M271	Davis, Charles E.	Wichita, KS	46		
	McHugh, Lucy	Wichita, KS	30	01 Jun	01 Jun 1909
M271	Farr, Edgar	Whitewater, KS	25		
	Markee, Ora	Whitewater, KS	20	29 May	02 Jun 1909
M272	McMahan, Ula A.	Wichita, KS	37		
	Manahan, Lena L.	Wichita, KS	36	01 Jun	01 Jun 1909
M272	Payne, Alva Abraham	Mulvane, KS	24		
	Lipperd, Ella Odessa	Udall, KS	23	01 Jun	01 Jun 1909
M273	Lott, J.T.	Cherokee, OK	23		
	Lacy, Marie A.	Cherokee, OK	23	01 Jun	01 Jun 1909
M273	Woodworth, C.R.	Chicago, IL	28		
	Tracy, Blanche	Wichita, KS	22	01 Jun	02 Jun 1909
M274	Murphy, Howard Washington	Wichita, KS	23		
	Brady(dey), Carrie	Wichita, KS	19	01 Jun	01 Jun 1909
M274	Peak, R.A.	Palo Pinto, TX	33		
	Howard, Benie Shields	Hannibal, MO	28	01 Jun	02 Jun 1909
M275	Simmons, Clyde W.	Wichita, KS	31		
	Parks, Arie M.	Goddard, KS	29	01 Jun	02 Jun 1909

Marriage Records, continued

<u>Page</u>	<u>Groom/Bride</u>	<u>Residence</u>	<u>Age</u>	<u>Appl. Date</u>	<u>Marriage Date</u>
M275	Young, Frank H.	Wichita, KS	28		
	Turner, Mattie	Wichita, KS	21	01 Jun	01 Jun 1909
M276	McCullough, Charles M.	Wichita, KS	69		
	Wyckoff, Mattie E.	Wichita, KS	51	01 Jun	02 Jun 1909
M276	Taylor, Arthur	Wichita, KS	25		
	Dunlap, Winifred	Wichita, KS	17	01 Jun	01 Jun 1909
M277	Livengood, Arthur J.	Ashland, KS	22		
	McCormick, Mareta	Mt. Hope, KS	21	02 Jun	04 Jun 1909
M277	Osmon, Philip	Wichita, KS	77		
	DeLong, Mary Rose	Wichita, KS	47	02 Jun	02 Jun 1909
M278	Martin, Paul	Wichita, KS	22		
	Argabright, Mildred E.	Wichita, KS	20	02 Jun	02 Jun 1909
M278	Thomas, Floyd A.	Wichita, KS	22		
	Mueller, Jennie June	Wichita, KS	19	02 Jun	02 Jun 1909
M279	Dobbin, Thomas Miller	Viola, KS	25		
	Porter, Roxie Alma	Viola, KS	26	02 Jun	03 Jun 1909
M279	Luttgen, William	New York, NY	31		
	Schweiter, Lillie M.	Wichita, KS	22	02 Jun	02 Jun 1909
M280	Bowlus, Pearl A.	Wichita, KS	27		
	Dabney, Florence	Wichita, KS	23	02 Jun	02 Jun 1909
M280	Pearce, Chester A.	Wichita, KS	22		
	Whiting, Alice L.	Mt. Hope, KS	21	05 Jun	08 Jun 1909
M281	McDowell, O.J.	Tulsa, OK	30		
	Huddleston, Bessie May	Wichita, KS	23	05 Jun	06 Jun 1909
M281	Reynolds, Harry S.	Harper, KS	25		
	Nickell, Belle	Wichita, KS	25	05 Jun	06 Jun 1909
M282	Hill, Thomas Lee	Wichita, KS	26		
	White, Nettie	Wichita, KS	18	05 Jun	05 Jun 1909
M282	Rice, H.V.	Topeka, KS	31		
	Dye, Mabel A.	Wichita, KS	29	07 Jun	09 Jun 1909
M283	Allison, Mathew	Kingman, KS	42		
	Miller, Beatrice	Carthage, MO	28	07 Jun	07 Jun 1909
M283	Doramus, William L.	Perth, KS	21		
	Newland, Emma May	Conway Spgs, KS	18	07 Jun	09 Jun 1909
M284	Hill, Benjamin Franklin	Wichita, KS	33		
	Parks, Lulu E.	Wichita, KS	27	08 Jun	09 Jun 1909
M284	Owen, Elijah	Wichita, KS	38		
	Wright, Ella	Wichita, KS	39	07 Jun	07 Jun 1909
M285	Hagler, James B.	Kingman, KS	62		
	Fulton, Jennie	Randlett, OK	52	08 Jun	08 Jun 1909
M285	Rechif, Frank A.	Tuscon, AZ	26		
	Osthoff, Carrie T.	Wichita, KS	26	08 Jun	09 Jun 1909
M286	Bishop, John M.	Wichita, KS	22		
	Minick, Fannie	Wichita, KS	20	09 Jun	09 Jun 1909
M286	Snell, James H.	Wichita, KS	22		
	Matson, Ida J.	Wichita, KS	18	08 Jun	08 Jun 1909
M287	Hladik, William B.	Greenwich, KS	36		
	Maixner, Fannie	Benton, KS	21	09 Jun	09 Jun 1909
M287	Knowles, Paul	Wichita, KS	23		
	Paisley, Matilda	Wichita, KS	23	09 Jun	09 Jun 1909
M288	Davidson, Stephen Lock	Wichita, KS	25		
	Tuttle, Florence	Wichita, KS	21	09 Jun	09 Jun 1909

Marriage Records, continued

<u>Page</u>	<u>Groom/Bride</u>	<u>Residence</u>	<u>Age</u>	<u>Appl. Date</u>	<u>Marriage Date</u>
M288	Gleason Leonard O.	Wichita, KS	23		
	Vestal, Bertha M.	Wichita, KS	20	09 Jun	10 Jun 1909
M289	Davie, Stark L.	Dora, NM	38		
	Reber, Addie Myrtle	Wichita, KS	19	09 Jun	10 Jun 1909
M289	Shaw, Marcus X.	Wichita, KS	39		
	Jackson, Annie L.	Wichita, KS	39	10 Jun	10 Jun 1909
M290	Fultz, Richard	Wichita, KS	29		
	Smith, Annie	Wichita, KS	19	10 Jun	10 Jun 1909
M290	Lees, Jacob	Wichita, KS	21		
	Glahn, Mabel	Trinidad, CO	19	10 Jun	12 Jun 1909
M291	Bowden, R. Baxter	Wichita, KS	22		
	Burton, Mattie	Wichita, KS	23	10 Jun	
M291	Boyd, Andrew J.	Wichita, KS	24		
	Warner, Erma	Wichita, KS	20	10 Jun	10 Jun 1909
M292	Burns, Joseph E.	Wichita, KS	33		
	Willian, Edna C.	Wichita, KS	29	12 Jun	12 Jun 1909
M292	Hill, Albert	Wichita, KS	22		
	Robins, Lillian	Wichita, KS	20	11 Jun	11 Jun 1909
M293	Corfman, Noah C.	Whitewater, KS	23		
	Miser, Mabel	Mulvane, KS	23	12 Jun	12 Jun 1909
M293	Tester, R.W.	Wichita, KS	21		
	Dickerson, Oma	Wichita, KS	18	12 Jun	12 Jun 1909
M294	Flansburg, Walter S.	Wichita, KS	24		
	Moore, Reba	Wichita, KS	15	12 Jun	12 Jun 1909
M294	McPherson, Silas O.	Wichita, KS	26		
	Garner, Jennie	Wichita, KS	26	12 Jun	12 Jun 1909
M295	Morris, Henry E.	Mulvane, KS	22		
	Wygol, Mabel Leota	Mulvane, KS	20	14 Jun	17 Jun 1909
M295	Wood, Bert	Wichita, KS	23		
	Hiatt, Mabel	Wichita, KS	18	14 Jun	14 Jun 1909
M296	Dirlam, Tommy	Greenwich, KS	21		
	Lent, Grace	Greenwich, KS	23	14 Jun	14 Jun 1909
M296	Harryman, Frank S.	Baltimore, MD	28		
	Wood, Anita	Wichita, KS	23	14 Jun	15 Jun 1909
M297	Drake, George D.	Hobart, OK	23		
	Smith, Hazel P.	Wichita, KS	19	15 Jun	16 Jun 1909
M297	Ellis, William P.	Wellington, KS	25		
	Smith, Linnie L.	Wichita, KS	23	14 Jun	14 Jun 1909
M298	Hennings, Roy J.	Wichita, KS	26		
	Cox, Ona Lucile	Wichita, KS	22	16 Jun	16 Jun 1909
M298	Moore, Robert E.	House, NM	32		
	Snyder, Georgia V.	Potwin, KS	37	16 Jun	16 Jun 1909
M299	Hyde, A.M.	Wichita, KS	25		
	Hiser, Edna B.	Wichita, KS	25	16 Jun	16 Jun 1909
M299	Yewell, Alvin D.	Medicine Ldge, KS	28		
	Williams, Grace	Medicine Ldge, KS	24	16 Jun	16 Jun 1909
M300	Larkin, Allen R.	Wichita, KS	21		
	Bishop, Gertrude	Wichita, KS	21	16 Jun	16 Jun 1909
M300	Philbrick, Roy J.	Wichita, KS	18		
	Morrison, Julia	Wichita, KS	18	16 Jun	16 Jun 1909



WICHITA HISTORICAL PANEL NO. 90

Indians Solved Problem of a Name for City of Wichita

J. R. Mead Insisted No Name So Appropriate as That
of Tribe Once Located Here



(Wichita Historical Panel No. 90)

WICHITA WAS INCORPORATED as a town in 1868 by J. R. Mead, Governor Samuel J. Crawford and others. The town was named by Mead, or rather it was he who insisted that many suggested names would not do, that the place already had been named by the tribe of Wichita Indians which had occupied the ground for several years prior to white settlement. It was during the summer of 1868 that a post office was established here with Milo Kellogg first postmaster, the community being the end of the mail route from Towanda. During this summer the township was attached to Butler county for judicial purposes and D. S. Munger appointed justice of peace. The first election here was held in November, 1868, and the records show 35 votes were cast.

Reprinted by permission of The Wichita Eagle

WICHITA HISTORICAL PANEL NO. 91

'Squaw Patches' Were Left by Early Tribe of Indians

Wichitas Cultivated Native Corn, Pumpkins, Melons
and Mexican Beans Here



(Wichita Historical Panel No. 91)

WHEN first white settlers followed the Indians to the present site of Wichita and burned down the deserted grass tepees of the Wichita Indians because they feared the structures might harbor cholera germs they did not find even prairie down to the waters of the Arkansas river. The prairie was dotted with patches of weeds, called by the early settlers, "squaw patches." They were the gardens of the Indian women, where, according to J. R. Mead, pioneer trader and city builder, they cultivated native corn, pumpkins, melons and Mexican beans. They were protected by fences of small poles set upright in the ground. When the Indians left the valley the patches of broken prairie grew up in sunflowers and weeds and years later their locations could be distinguished.

Reprinted by permission of The Wichita Eagle

18TH JUDICIAL DISTRICT PROBATE INDEX

Explanation of Column Headings	
Case	Number assigned to case
Name	Names of major parties involved; guardianships list each individual separately
Date	Earliest date found in file, not necessarily date case was originally filed
Type	D = Death G = Guardianship M = Miscellaneous, further described in Comments column
Pages	Approximate number of pages in case; if 10 or fewer receipts/canceled checks, included in page count, otherwise shown separately in Comments column
Comments	Any other type of pertinent information not appearing in other columns

Case	Name	Date	Type	Pgs	Comments
5813	Davis, Vernon E.	10-Nov-1913	G	11	
5814	Davis, Chester A.	10-Nov-1913	D	6	
5815	Westgate, Lyman D.	10-Nov-1913	D	7	
5816	Ward, Frank B.	10-Nov-1913	G	12	
5817	Wilson, Henry B.	11-Nov-1913	D	34	
5818	Higgins, James F.	12-Nov-1913	D	17	
5819	Wimp, James A.	13-Nov-1913	D	61	Plus 23 receipts
	Hibberd, Ernest				
5820	Truman	14-Nov-1913	G	64	
5821	Oliver, Stephen H.	18-Nov-1913	D	13	
5823	Bissantz, Jacob	28-Nov-1913	D	40	Plus 95 receipts
5824	Findlay, Lorvina	1-Dec-1913	G	13	
5826	Wilson, Rhoda	3-Dec-1913	D	25	Plus 53 receipts
5827	Brinkman, J.H.	4-Dec-1913	D	34	
5828	Gibson, Bryan	5-Dec-1913	D	10	
5829	Bunton, John W.	5-Dec-1913	D	20	Plus 20 receipts
	Gilchrist, Archie				
5830	Golden	20-Nov-1913	G		See Gilchrist, William Robert
	Gilchrist, Hugh				
5830	Robert	20-Nov-1913	G		See Gilchrist, William Robert
	Gilchrist, William				Also Gilchrist: Hugh Robert, Archie
5830	Franklin	20-Nov-1913	G	9	Golden
5831	Dickson, Albert C.	8-Dec-1913	D	61	
					Also Freund: Paulina, Sophia, Ida, Rosa,
5832	Freund, Bertha	8-Dec-1913	G	89	Olive, Nicholas, Richard-Plus 83 receipts
5832	Freund, Ida	8-Dec-1913	G		See Freund, Bertha
5832	Freund, Nicholas	8-Dec-1913	G		See Freund, Bertha
5832	Freund, Olive	8-Dec-1913	G		See Freund, Bertha
5832	Freund, Paulina	8-Dec-1913	G		See Freund, Bertha
5832	Freund, Richard	8-Dec-1913	G		See Freund, Bertha
5832	Freund, Rosa	8-Dec-1913	G		See Freund, Bertha

Case	Name	Date	Type	Pgs	Comments
5832	Freund, Sophia	8-Dec-1913	G		See Freund, Bertha
5833	Gorl, James	11-Dec-1913	D	61	Plus 50 receipts
5834	Robinson, Nancy Agnes	12-Dec-1913	D	12	
5835	Hoover, Samuel H.	20-Dec-1913	D	97	Plus 23 receipts
5836	Hensley, Ida M.	17-Dec-1913	D	25	
5838 a	Baker, Marion	18-Dec-1913	D	0	Plus 200 receipts
5838 b	Baker, Marion	18-Dec-1913	D	100	Plus 88 receipts
5839	Himmelwright, E.F.	23-Dec-1913	D	47	Plus 19 receipts
5840	Burr, Frances	3-Dec-1913	D	7	
5841	Norcross, William C.	26-Dec-1913	D	48	
5842	Burton, Rachel W.	29-Dec-1913	D	13	
5843	Hall, Nora	31-Dec-1913	D	11	
5844	Bird, Josiah M.	31-Dec-1913	D	29	Plus 21 receipts
5846	Sieloff, Charles	2-Jan-1914	D	31	
5848	Wilson, Charles D.	6-Jan-1914	G	13	Also Wilson, Granville O.
5848	Wilson, Granville O.	6-Jan-1914	G		See Wilson, Charles D.
5849	Page, Charles O.	6-Jan-1914	D	10	
5851	Little, Frank	1-Jul-1912	G	9	Also Little, Homer
5851	Little, Homer	1-Jul-1912	G		See Little, Frank
5852	Loshbaugh, Chauncey	19-Dec-1913	G	5	Also Loshbaugh, Leitha J., Ray, Marvel L., Cleva M.
5852	Loshbaugh, Cleva M.	19-Dec-1913	G		See Loshbaugh, Chauncey
5852	Loshbaugh, Leitha J.	19-Dec-1913	G		See Loshbaugh, Chauncey
5852	Loshbaugh, Marvel L.	19-Dec-1913	G		See Loshbaugh, Chauncey
5852	Loshbaugh, Ray	19-Dec-1913	G		See Loshbaugh, Chauncey
5853	Jurgens, John N.	15-Jan-1914	D	32	
5854	Kramer, Emily W.	13-Feb-1914	D	12	
5855	Ditgen, Nicholas Sr.	26-Jan-1914	D	47	
5856	Howe, Daniel S.	30-Jan-1914	D	76	Plus 54 receipts
5858	VanZandt, Josiah R.	3-Feb-1914	D	29	Plus 15 receipts
5859	Mount, Amos T.	4-Feb-1914	D	85	Plus 13 receipts
5860	Wood, William L.	4-Feb-1914	D	24	
5861	Miller, Susannah	5-Feb-1914	D	22	
5863	Sherman, Frederick	23-Oct-1913	D	31	
5864	Bissell, Forest	9-Feb-1914	G	13	
5865	Holt, Robert Michel	10-Feb-1914	G	20	Also Holt, Maynard Edward
5866	Schmidt, Casten	11-Feb-1914	D	44	
5867	Farmer, Jessie A.	11-Feb-1914	D	20	
5868	Keith, Harrison	14-Feb-1914	D	31	
5869	Brueggemann, Adolph	16-Feb-1914	D	9	
5870	Stinson, C.E.	17-Feb-1914	D	22	
5871	Henshaw, Russell H.	17-Feb-1914	G	10	

Probate Index, continued

Case	Name	Date	Type	Pgs	Comments
5872	Scroggy, B.B. Jr.	17-Feb-1914	G		See Scroggy, Clair Butler
5872	Scroggy, Clair Butler	17-Feb-1914	G	9	Also Scroggy, B.B. Jr.
5873	Weidman, William F.	19-Feb-1914	D	8	
5874	Beard, Walter	24-Feb-1914	G	11	
5875	Winchester, Worthy A.	26-Feb-1914	D	20	
5876	Forward, Charles N.	28-Feb-1914	D	27	Plus 48 receipts
5877	Gorl, Hattie	16-Dec-1921	D	54	Plus 18 receipts
5878	Wilmot, Ruth	28-Feb-1914	G	20	
5879	Loosley, Emma	2-Mar-1914	D	13	
5880	Smith, Ira A.	3-Mar-1914	D	35	Plus 21 receipts
5881	Wilson, James T.	4-Mar-1914	D	24	
5882	Clark, John C.	5-Mar-1914	D	12	
5883	Skinner, Earl	5-Mar-1914	G		See Skinner, Freddie
5883	Skinner, Freddie	5-Mar-1914	G	30	Also Skinner, Earl - Plus 20 receipts
5884	Skinner, Victor	9-Mar-1914	D	58	
5885	Reed, Helen May	5-Mar-1914	G	61	
5886	Johnson, Katie E.	9-Mar-1914	D	38	Plus 51 receipts
5888	Dennett, Francis E.	11-Mar-1914	D	48	Plus 43 receipts
5889	Hurd, Warren H.	4-Mar-1914	D	23	
5890	McCarty, William	16-Mar-1914	D	45	
5891	O'Gara, Wallace H.	19-Mar-1914	G	64	
5892	Aves, Edward	9-Feb-1914	G		See Aves, Keneth
5892	Aves, Etna	9-Feb-1914	G		See Aves, Keneth
5892	Aves, Keneth	9-Feb-1914	G	2	Also Aves: Etna, Edward
5893	Oldridge, H.M.	24-Mar-1914	D	43	Plus 111 receipts
5894	Thorp, Emma Ames	26-Mar-1914	D	43	
5895	Graham, Mollie Skinner	27-Mar-1914	D	51	Plus 72 receipts
5896	Deering, William	1-Apr-1914	D	11	
5897	Callahan, John	29-Apr-1914	M	71	Writ of Habeas Corpus
5898	Massey, Anna	3-Apr-1914	G	20	Also Massey: William, Laura
5898	Massey, Laura	3-Apr-1914	G		See Massey, Anna
5898	Massey, William	3-Apr-1914	G		See Massey, Anna
5899	Cain, Gladys	4-Apr-1914	G	29	
5900	Jones, Stephen F.	9-Apr-1914	D	46	Plus 263 receipts
5901	Haward, William	14-Apr-1914	D	26	
5903	Little, Robert	15-Apr-1914	D	62	Plus 75 receipts
5904	Busch, Adolphus	17-Apr-1914	D	45	
5905	Carpenter, Lyman A.	16-Apr-1914	D	166	Plus 78 receipts
5906	Rixz, Sarah	18-Apr-1914	D	18	Plus 12 receipts
5907	Webster, James C.	18-Apr-1914	G	24	
5908	Shearman, J.F.	20-Apr-1914	D	21	

Case	Name	Date	Type	Pgs	Comments
5909	Bishop, Henry	22-Apr-1914	D	31	Plus 244 receipts
	Loevenich, John				
5910	Hubert (Rev.)	25-Apr-1914	D	25	
5912	Johnson, Rena	28-Apr-1914	D	7	
5913	Martin, Francis P.	10-Oct-1913	D	20	
5914	Stephens, Henry	8-May-1914	D	19	
5915	Swanson, Nels	7-May-1914	D	31	
	Bilderback, Charles				
5916	J.	7-May-1914	G	14	
	Hunsaker, Charles				
5917	Henry	8-May-1914	D	27	Plus 147 receipts
5918	Coffman, Andrew J.	8-May-1914	D	45	Plus 74 receipts
5919	Splinters, John G.	9-May-1914	D	24	
5920	Tayer, W.H.	11-May-1914	D	20	Plus 52 receipts
5921	Willis, Albert P.	11-May-1914	D	30	
	Cooke, William				
5922	Harris	12-May-1914	D	17	Plus 44 receipts
5924	Traylor, William A.	18-May-1914	D	6	
	Olmsted, Gertrude				
5927	Maud	25-Apr-1914	G	13	
5928	King, William	29-Jun-1914	D	36	Plus 11 receipts
5929	Hamm, Sarah	23-May-1914	D	42	Plus 23 receipts
	Hull, Frederick				
5930	Norman	20-May-1914	G		See Hull, Gladys Fay
					Also Hull, Frederick Norman - Plus 78 receipts
5930	Hull, Gladys Fay	20-May-1914	G	38	
	Oneal, Clara				
5931	Virginia	28-May-1914	G		See Oneal, Wayne Walter
	Oneal, Wayne				
5931	Walter	28-May-1914	G	12	Also Oneal, Clara Virginia
5932	Baker, Ella L.	25-Mar-1914	D	9	
5933	Watson, F.M.	1-Jun-1914	D	157	Plus 88 receipts
5934	Hull, Charles F.	3-Jun-1914	D	19	Plus 14 receipts
5935	Stevens, William F.	4-Jun-1914	D	55	Plus 107 receipts
5936	Lyon, Ida C.	6-Jun-1914	G		See Lyon, Zerietta C.
5936	Lyon, William B.	6-Jun-1914	G		See Lyon, Zerietta C.
5936	Lyon, Zerietta C.	6-Jun-1914	G	9	Also Lyon: William B., Ida C.
	Hanning, James				
5937	Thomas	29-Sep-1914	D	120	Plus 80 receipts
5938	Lyon, Ida E.	8-Jun-1914	D	11	
5939	Davis, Penelope F.	10-Jun-1914	D	86	Plus 11 receipts

**Copies of probate files may be purchased from MHGS by regular mail
(MHGS, Attention: Probate File Assistant, PO Box 1121, Wichita, KS, 67201-1121),
by phone (316-264-3611) when the library is open,
or by email (info@mhgswichita.org)**

NEW MATERIALS IN THE MHGS LIBRARY

Compiled by Julia Langel

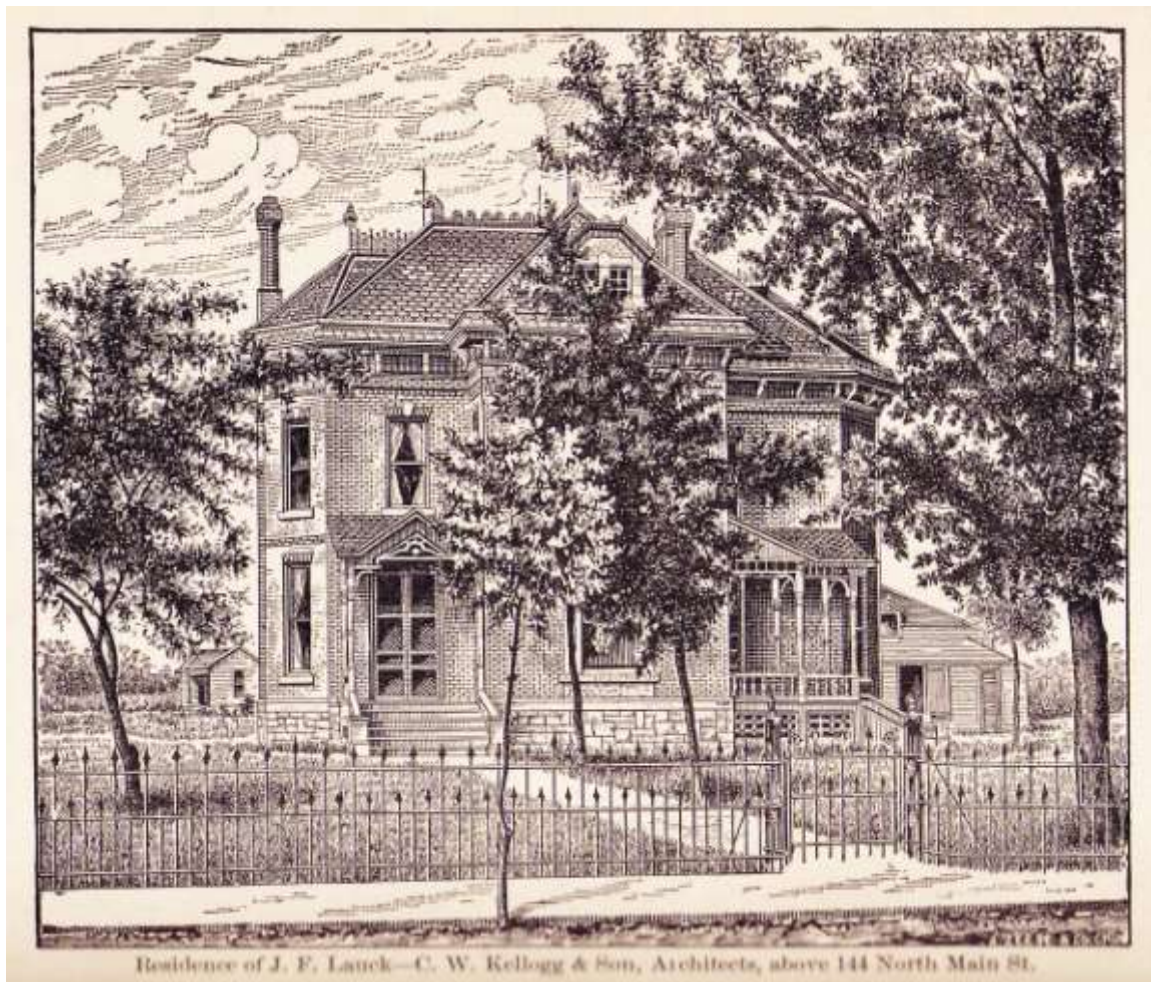
Accession No.	Author	Title
G-Gen 012		Who's who in America.
G-M 091	Mathewson Richard J.	William Mathewson: The Original "Buffalo Bill"
G-W 118	Frye Randall S.	Before Michael Witt & after: a genealogy of the Witt family with South Carolina origins 1752-1997
R-040 046 V 33		The Kettle
R-040 046 V 34		The Kettle
R-040 046 V 35		The Kettle
R-040 046 V 36		The Kettle
R-040 046 V 37		The Kettle
R-040 047 V 1		Melting Pot Genealogical Society Members Pedigrees
R-040 047 V 2		Melting Pot Genealogical Society Members Pedigrees
R-040 047 V 3		Melting Pot Genealogical Society Members Pedigrees
R-040 047 V 4		Melting Pot Genealogical Society Members Pedigrees
R-210 104		Year of the storms: the destructive Kansas weather of 1990
R-210 AL 05 1972		The Torch
R-210 AL 05 1973		The Torch
R-210 CD 08 1966		Thunderbird
R-210 CL 01 1940		The Moundbuilder
R-210 CR 02 1946		Kanza
R-210 CR 02 1947		Kanza
R-210 CR 11 1991		Pittsburg State University Alumni Directory
R-210 HV 13 1943		The Graymaroon
R-210 HV 13 1946		The Graymaroon
R-210 HV 13 1947		The Graymaroon
R-210 HV 13 1948		The Graymaroon
R-210 HV 13 1949		The Graymaroon
R-210 HV 13 1960		The Graymaroon
R-210 HV 14 1961		Thresher
R-210 HV 14 1962		Thresher
R-210 HV 14 1965		Thresher
R-210 HV 15 1949		The Lark
R-210 HV 15 1960		The Lark
R-210 HV 15 1971		The Lark
R-210 HV 15 1973		The Lark
R-210 HV 15 1974		The Lark
R-210 JO 06 V 42		The Johnson County Kansas Genealogist
R-210 LY 01 1948		Sunflower
R-210 LY 01 1960		Sunflower
R-210 RC 01 1960		The Round-Up
R-210 RL 01 1939		Royal Purple

Accession No.	Author	Title
R-210 RL 01 1940		Royal Purple
R-210 RL 01 1941		Royal Purple
R-210 RL 01 1942		Royal Purple
R-210 RL 01 1948		Royal Purple
R-210 RL 01 1949		Royal Purple
R-210 RL 01 1968		Royal Purple
R-210 RL 01 1973		Royal Purple
R-210 RS 04 1965		The Roundup
R-210 SA 13 1929		The Coyote
R-210 SG 006 1921		Parnassus
R-210 SG 006 1930		Parnassus
R-210 SG 006 1936		Parnassus
R-210 SG 006 1937		Parnassus
R-210 SG 006 1938		Parnassus
R-210 SG 006 1951		Parnassus
R-210 SG 006 1956		Parnassus
R-210 SG 006 1961		Parnassus
R-210 SG 006 1962		Parnassus
R-210 SG 006 1969		Parnassus
R-210 SG 008 1967		The Talisman
R-210 SG 008 1969		The Talisman
R-210 SG 008 1970		The Talisman
R-210 SG 008 1971		The Talisman
R-210 SG 095 V 25		Ark Valley Crossroads
R-210 SG 159		Wichita High School North Class 1964 50th Reunion Directory & Memory Book
R-210 SG 160 1968		The Outlook
R-210 SG 161		Pinches & dashes: recipes & life measures from the Junior League of Wichita
R-210 SN 02 1941		Washburn Kaw
R-210 SN 02 1942		Washburn Kaw
R-210 SN 02 1946		Washburn Kaw
R-210 SN 02 1947		Washburn Kaw
R-390 115 V 37-38		The Tree Tracers
R-390 116 V 27		Delaware County Family Trails
R-390 121 V 33-34		The LeFlore County Heritage
R-390 125 V 58		Oklahoma Genealogical Society Quarterly
R-410 324 V 36-37		Pennsylvania Mennonite Heritage
R-410 326 V 40-41		Keyhole
R-410 326 V 42-43		Keyhole
R-410 333 V 34-35		Blair County Genealogical Society Newsletter
R-440 043 V 57		Footprints
R-440 073	Nelson George S.	The Alamo: an illustrated history

New MHGS Materials, continued

Accession No.	Author	Title
R-460 017	Stratton Allen L.	History town of Isle La Motte Vermont: an account of the discovery settlement and interesting and remarkable events
R-470 364	Stickley Judy Coffman	Someone You Knew: A Necrology Shenandoah County Virginia 1990-2005
R-470 365 V 1	Stickley Judy Coffman	Someone You Knew II: A Necrology Shenandoah County Virginia 1869-1989
R-470 365 V 2	Stickley Judy Coffman	Someone You Knew II: A Necrology Shenandoah County Virginia 1869-1989
R-470 366	Bruce Thomas	Southwest Virginia and Shenandoah Valley
R-480 093	Shuck Larry G.	Hampshire & Hardy Counties (W) Va. abstracts
R-490 21 V 46		Yakima Valley Genealogical Society Bulletin
R-500 020 V 45		MCGS Reporter
R-600 055 90		National Genealogical Society quarterly
R-600 055 91		National Genealogical Society quarterly
R-600 055 92		National Genealogical Society quarterly
R-600 055 93		National Genealogical Society quarterly
R-600 055 94		National Genealogical Society quarterly
R-600 057		Page one: major events 1900-1998 as presented in the New York times.
R-620 273 V 1		General alphabetical index to the townlands and towns parishes and baronies of Ireland
R-620 273 V 2		General alphabetical index to the townlands and towns parishes and baronies of Ireland
R-650 085	Kemp Peter	The history of ships
R-670 241	Ward Geoffrey C.	The Civil War
R-670 242	Barnett Correlli	The Great War
R-670 243	Denney Robert E.	Civil War medicine: care & comfort of the wounded
R-670 244		World War II: a 50th anniversary history
R-670 245	Mayer S. L.	World War II
R-670 246	Gibbons Tony	Warships and Naval Battles of the Civil War
R-670 247	Davis William C.	The battlefields of the Civil War
R-670 248	Priest, John M.	Before Antietam: the battle for South Mountain
R-670 249	Taylor, Michael J. H.	Modern Combat and Commercial Aircraft
VB L 01		Dr. Frank M Lowe Jr. at Central Christian Church Wichita KS 1929 - 1934
Online -- Link in catalog	Brayer Garnet M.	American cattle trails 1540-1900
Online -- Link in catalog	Goering Jacob M.	The Rev. Jacob Stucky Family Record 1824 - 1953
Online -- Link in catalog	Goering Jacob M.	The Jacob Strausz Sr. Family Record 1859 - 1948
Online -- Link in catalog	Goering Jacob M.	The Peter Graber family record 1839-1948
Online -- Link in catalog	Goering Jacob M.	The Jacob Krehbiel Sr. Family Record 1840 - 1951
Online -- Link in catalog	Harger Charles Moreau	Cattle-trails of the prairies
Online -- Link in catalog	Hill J. L.	The end of the cattle trail
Online -- Link in catalog	Kaufman Edmund G.	The Peter Kaufman and Freni Strausz Kaufman family record 1844-1963
Online -- Link in catalog	King Frank M.	Longhorn trail drivers: being a true story of the cattle drives of long ago

Accession No.	Author	Title
Online -- Link in catalog	Krehbiel Christian	Prairie pioneer
Online -- Link in catalog	Krehbiel William John	History of one branch of the Krehbiel family
Online -- Link in catalog	Long Margaret	The Smoky Hill trail: following the old historic pioneer trails on the modern highways
Online -- Link in catalog	McCoy Joseph G.	Historic sketches of the cattle trade of the West and Southwest
Online -- Link in catalog	Strickler Abigail H.	Stricklers of Pennsylvania
Online -- Link in catalog	Strickler Harry M.	Forerunners; a history or genealogy of the Strickler families their kith and kin including Kauffmans, Stovers, Burners, Ruffners, Beavers, Shavers, Brumbach, Zirkles, Blossers, Groves, Brubakers, Neffs, Rothgebs and many other early families of Shenandoah, Rockingham, Augusta, Frederick and Page counties of the Shenandoah Valley; a memorial to those who have gone before
Online -- Link in catalog		Digested summary and alphabetical list of private claims which have been presented to the House of representatives from the First to the Thirty-first Congress
Online -- Link in catalog		The quarterly of the Texas State Historical Association.



From the 1888 Wichita City Directory; located at 1406 Fairview

The Wichita Weekly Eagle

Friday, 7 November 1872, page 3

Column 1

CITY AND COUNTY NEWS.

We are still having beautiful Indian summer.

The county commissioners meet to-morrow.

The postoffice book store is full of new goods.

The club dance was largely attended last night.

W. J. Hobson has raised and otherwise improved his residence.

Peach blow potatoes are selling in this market at forty cents per bushel.

Let everybody go to the Methodist festival to-night.

We have a turnip in our office that we some times roll out for our visitors to sit on.

The Arkansas river and other streams in this locality are increasing in volume.

Prairie chickens, wild ducks and wild geese are becoming plentiful in our markets.

C. F. Gilbert has returned from Warrensburgh [sic].

The Little river has been up this week past flooding.

The sign for the Wichita savings bank was painted by W. J. Bensch.

Karatofsky's goods have come. He is opening them to-day in the Eagle Block.

Treasurer Johnson has an interesting article in this week's paper on tax apportionment.

West & Mann received this week one hundred kegs of nails.

The police made nine arrests in this city on Saturday night last.

W. A. Shuman is offering some fine bargains at his store, La Fetra Bros.' old stand.

Auction rooms at the Eagle Block. A large stock of bankrupt goods of everything imaginable. Sign of the red flag.

Butter is worth forty cents a pound in this market – at least that is the amount one has to pay for it.

Captain Shannon, of Augusta, arrived in town yesterday with the gratifying intelligence that Butler has gone republican.

W. A. Thomas & Co. have a new delivery wagon. Leave your orders at the green front and have your goods delivered.

H. J. Reiness has added to his stock of books and stationery a fine lot of the best brands of domestic and imported cigars.

The Presbyterian church building is offered for sale. Terms of purchase may be had by inquiring of Mr. Kramer, Mr. Hyde or Mr. Martsolf.

Two dollars and twenty-five cents per day is the wages paid common laborers in Wichita, and the supply does not exceed the demand.

Neck-tie bag at the festival to-night. You buy your neck-tie and hunt the dress or tie to match.

The old New England style of a hundred [years] ago will be represented to-night at the festival in the way of a kitchen supper and costumed waiters.

The prices on cattle this week are somewhat lower than last. Beeves are selling at 2@2½¢. Stock cattle are considerably lower. The shipment has been about thirty cars daily.

By a close estimate it is ascertained that there remains yet unshipped in this market about 11,000 head of cattle, including all grades and descriptions.

The demand for real estate is on the increase. Now that the presidential campaign is closed, we expect to see yet this fall many buyers from the east.

The new time table of the A., T. & S. Fe R. R. took effect last Sunday. The passenger train arrives at Wichita at 11:15 p. m. and departs at 2:35 a. m.

George Meech entered the first quarter-section in the Wichita land office that was all under cultivation at the time of entry, the entire quarter being in wheat and corn.

Captain Folks, the enterprising editor of that sterling republican sheet, the *Oxford Press*, spent last Sabbath in our city. We are always glad to see Captain Folks.

The beef-packing establishment promises to become a verity. Several locations have been examined. We hope to see ten thousand beeves packed at this point next season.

Laflin loaded his train at Schlichter & Russell's and J. H. Black's one day last week, being a part of the supplies bought by Friend Richards, the agent, to be taken to the Cheyenne Indian agency.

Captain Frank Shannon, for a long time connected with the United States land office, left yes-

terday morning, with his family, for New York city, his former home. Frank has hundreds of friends in this town.

W. J. Kennedy, the popular and efficient cashier at the A., T. & S. Fe railroad depot, has gone to Pennsylvania on a visit, and we understand that he intends to bring an assistant with him on his return.

So much time and attention has the canvass taken up that several important improvements in our city have been overlooked, about which we will try and post our readers in the next week or two.

The McMeekin House, at Topeka, is one of the most popular stopping places in the state. The Texas cattle men of this place are loud in their praises of the house, its furnishing and accommodations.

We learn that the counties of Ford and Pawnee, on the A., T. & S. Fe railroad have both been organized, with a voting population of from three to five hundred each. Both of these counties are in this senatorial district.

Mr. James Dagner has, we learn, disposed of all interest in Wichita and will remove to Puebla [sic], Colorado, all of which we are sorry to record. Mr. Dagner has been one of our enterprising citizens.

Bear & Laux have completed arrangements to put up eight hundred tons of ice this winter, providing it freezes sufficient. From present indications, there seems to be a poor prospect for ice.

The election passed off very quietly in the city of Wichita, with no drinks, fights, or disturbance of any character. The day was very fine, and the entire strength of the city was polled. In many of the townships the vote was light.

Mr. L. J. Baldwin, a merchant of Ottawa, visited our county this week, looking up a new location, and the country far exceeding his expectations, he has no hesitancy in deciding to become one of the citizens of the great Southwest immediately.

Several miles of sidewalk have been laid down upon the different streets this fall, but how about the crossings? The walks running east and west are so badly cut up with streets and alleys that it looks like the job was not much more than half finished.

There is one rick of hay, on the high prairie six or eight miles east of town, over a quarter of a mile in length. We do not know the owner's name, but we noticed that he had several hundred head of cattle that he was putting up sheds sufficient to protect them all.

The survey of the "bob-tail" railroad, so called, running from Cedar Point to Eldorado, was completed last week, and the estimate for construction completed. The *Eldorado Times* says the survey will be continued on down the Walnut valley to Douglas [sic].

The Catholics have been holding meetings this week and have organized a society, and will proceed to finish their church immediately. Father Kuhls, of Wyandotte, and Father Faire, of Lawrence, are here, and will hold service again next Sabbath.

Column 2

Nearly all of the heavy Texas cattle drovers have gone home, and all, with the exception of two or three, have expressed themselves as being highly pleased with Wichita as a shipping point, and intend to drive here next year.

Every description of business in Wichita is having a lively run this fall. While nearly every town in the state is complaining of hard times, the business men of Wichita are all astir, wearing countenances that speak of plenty of trade and cash down.

MARRIED.

At the Empire House, in this city, on the evening of the 31st of October, 1872, by the Rev. J. McQuiston, P. E., Mr. Frederick Watson to Miss Belle Winger, all of Butler county, Kansas¹.

The Douglas Avenue House still continues to be overrun with guests, and the proprietors still continue to supply the tables with good things – the best the market affords – and those Sunday dinners nobody but an experienced hand like Mr. Allen, the steward, can get up.

Cordeiro & Co., have moved from the building which they occupied this summer, known as the Texas Hotel, to No. 92 Main street, where they are prepared to accommodate the traveling public, or persons that wish to board either by the day or

¹ Fred Watson was born 25 April 1845 in Kentucky and died 30 October 1916 in San Antonio, Texas. He is buried in Mission Burial Park South in San Antonio, Bexar County. [Anna] Belle Winger was born 24 February 1854 in Virginia, and died 30 November 1933; she is buried next to her husband in San Antonio.

week. Their house bears the old name, Texas Hotel².

Father Kuhls is working energetically in raising funds for the building of the Catholic church, the foundation of which is already in. Father Kuhls is a very pleasant appearing man, full of life and energy, and we have no doubt but that he will succeed in his Christian enterprise.

The amount of telegraphing done by the business men of this place last month amounted to \$535.87, as we are informed by the operator, Mr. Bancroft. This is the largest return yet made for any month, as it is over and above what was done in the interest of shippers and by the company.

All of our lumber dealers are receiving immense supplies of lumber for their winter trade. So great has been the rush this summer that often our dealers found themselves without assortment. The market is now fully supplied, and parties at a distance need not fear to order any kind or any amount of lumber.

Three-fourths of the range of Southwestern Kansas has been destroyed by the destructive prairie fires that have raged for the past three weeks. Of course large amounts of hay have been burned up, and in many instances, grain, stock and buildings. There is a way to shun all this evil; but when people will learn to take the proper precaution, it is hard to guess.

G. H. Smith brought us a specimen of potatoes which were raised on his farm adjoining town, being the second crop of potatoes raised on the same piece of ground. They are of the peach blow and early rose varieties, and are large and nice looking. The first crop was of the early June variety, were dug on the 25th of June and were large and ripe.

Our county treasurer, S. C. Johnson, gives notice this week that the county clerk has turned over the tax rolls, and that he is now ready to receive the taxes for 1872-3. The amount of taxes upon each

one thousand dollars for state, township, city and the respective school districts, is all given, so that any man in the county, knowing the amount of his assessment, can readily figure up the amount for which he will be called upon. The tax rolls are the best and most complete of any ever yet made up in the county, and Mr. Schattner deserves much praise.

Thousands upon thousands of buffalo hides are being brought in here by hunters. In places whole acres of ground are covered with these hides, spread out with the fleshy side up to dry. It is estimated that there is, south of the Arkansas and west of Wichita, from one to two thousand men shooting buffalo for their hides alone. It is any wonder that the red man some times protests against this wanton destruction of his cattle?

Mr. James Bryden returned from Chicago this week, where he had been settling up this year's cattle deal and other matters. He is one of the most reliable and straightforward dealers that has spent the summer here. He is a Scotchman by birth, a close observer and shrewd dealer, and has contributed several very interesting and able articles upon the traffic during the summer. He has entered into a contract to deliver five thousand head of choice cattle at this point next spring.

A train of cars was loaded on Sunday afternoon of last week at this place with cattle and run to Atchison, where they unloaded them to be fed. Two of the steers were lying down in the car supposed to be dead, and were left there, to be shipped back to be unloaded in the bone yard. Accordingly, the train was brought back to this place on Wednesday and the car doors thrown open, preparatory to being again loaded, and while the train was moving slowly from the depot to the stock yards, one of the steers took a new lease of life, got on his legs, jumped out of the car and ran at least a mile before he stopped to appease his hunger, having been in the car about eighty hours without food or water.

Superintendent Fagan showed us some specimens of salt and salt water, taken from a well sunk by the A., T. & S. Fe railroad company on Doyle creek, west of Peabody, in Marion county. The well is 144 feet deep, and the water tastes like pure salt. The ground around the well, where the water was poured out, is encrusted with salt, and something

² In July 1872 the Texas Hotel was "opposite the Douglas Avenue House," on the northwest corner of Douglas and Water streets. No. 92 Main Street (92 is the number of the lot on Main Street) was on the west side of Main Street and three lots south of Second Street. Charlie Cordeiro left for the Black Hills of South Dakota in 1874 to prospect for gold; by 1878 the Texas Hotel was again located on the northwest corner of Douglas and Water streets.

R. A. LETT.

A CARD. – Having associated with me in the practice of medicine Dr. C. E. Fisher, homeopathic physician and surgeon, late of Lawrence, I would respectfully announce to the citizens of Wichita and vicinity that all professional calls will be honored promptly, both night and day, from our office, No. 76 Main street. Special attention is given to Surgery and Dentistry.

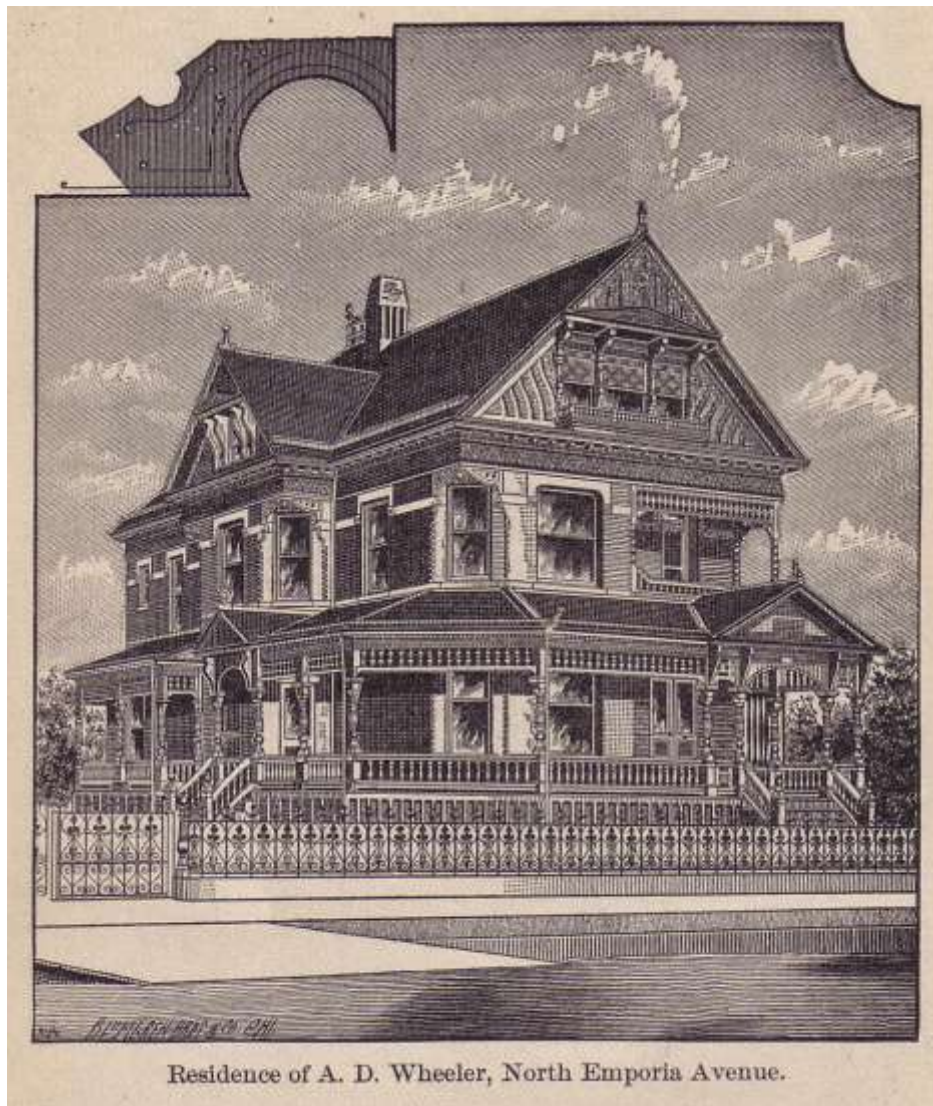
Dr. A. J. Longsdorf.
Wichita, Oct. 24, 1872.

REMOVAL. – Allen & McKillip have removed their stock of groceries to the corner building, lately occupied by J. E. Price & Co.

like a pint of pure salt was scraped from a board over which water had been poured the day previous. The water is so destructive to engines that it could not be used at a depth of forty feet, and the further they went down the saltier it proved, until they were compelled to give it up. Before reaching the present depth the drill passed through a species of perfectly white marble, that was several degrees harder than blue limestone.

SPECIAL NOTICES.

STRAYED OR STOLEN. – On Saturday night, November 2d, a black horse, between 14 and 15 hands high, six or seven years old, with a head halter and rope strap; shod all around. Any one leaving information at the EAGLE office where he can be found, will be liberally rewarded.



*From the 1888 Wichita City Directory
A D Wheeler, 637 N Emporia*

UPCOMING MHGS EVENTS

All events and programs will take place at the MHGS Library, 1203 N Main, unless otherwise noted.

All events and programs are free and open to the public.

A non-member access fee is collected for research in the MHGS library before or after the event/program.

White Chapel Cemetery Project – Mondays at 9 AM – Jim Scharnhorst

White Chapel Memorial Gardens, 1806 N Oliver St, Wichita, from 9 AM to 10 AM

We are photographing the markers at White Chapel Cemetery using the BillionGraves app. Meet at the cemetery unless the weather is bad, or too hot!

For more information please email Jim Scharnhorst, treasurer@mhgswichita.org.

Genealogical DNA SIG – Second Saturday at 1 PM – Paul Renner Smith

Sessions will be held July 11, August 8, September 12, all from 1 PM to 2 PM

Discover the latest news in the field of Genealogical DNA study. This informal discussion group uses the newest information available to learn what DNA can tell us about our ancestors. Learn what different tests are available and where.

Genealogy on the Internet – Third Saturday 10 AM to Noon – Jim Scharnhorst

Sessions will be held July 18, August 15, September 19, all from 10 AM to Noon

Discuss the process of researching our family using the internet. Genealogy research has embraced the computer as not only the most efficient way to organize data, but the quickest way to access historical records. The ongoing digitization of documents for preservation purposes makes them searchable, economical, and immediately available. Our meeting is for sharing the sites we find most useful, finding solutions to the problems that have developed and learning what the future holds.

DAR Special Interest group – Third Saturday 1 PM to 2 PM – L. Williams & S. Bush

Sessions will be held July 18, August 15, September 19, all from 1 PM to 2 PM

Do you have ancestors who served in the American Revolution, either in a military unit or by providing service in another way? We can help you with the application process, show you what records you need to qualify, and give you all the details. Led by Sandi Bush and Lucille Williams.

Afro-American SIG – Fourth Saturday 1 PM to 2 PM – led by Jozel Smith Eckels

Sessions will be held July 25, August 22, September 26, from 1 PM to 2 PM

Special Interest Group encourages historical and genealogical study of families of any ethnic group with special emphasis on Afro-Americans. This informal group will seek to learn more of the history and factors within the family stories we have been told. We will demonstrate how to research your family tree with the goal of discovering and understanding your family history. The discussions will include a variety of methods, including exploring public records, interviewing older relatives and preserving information.

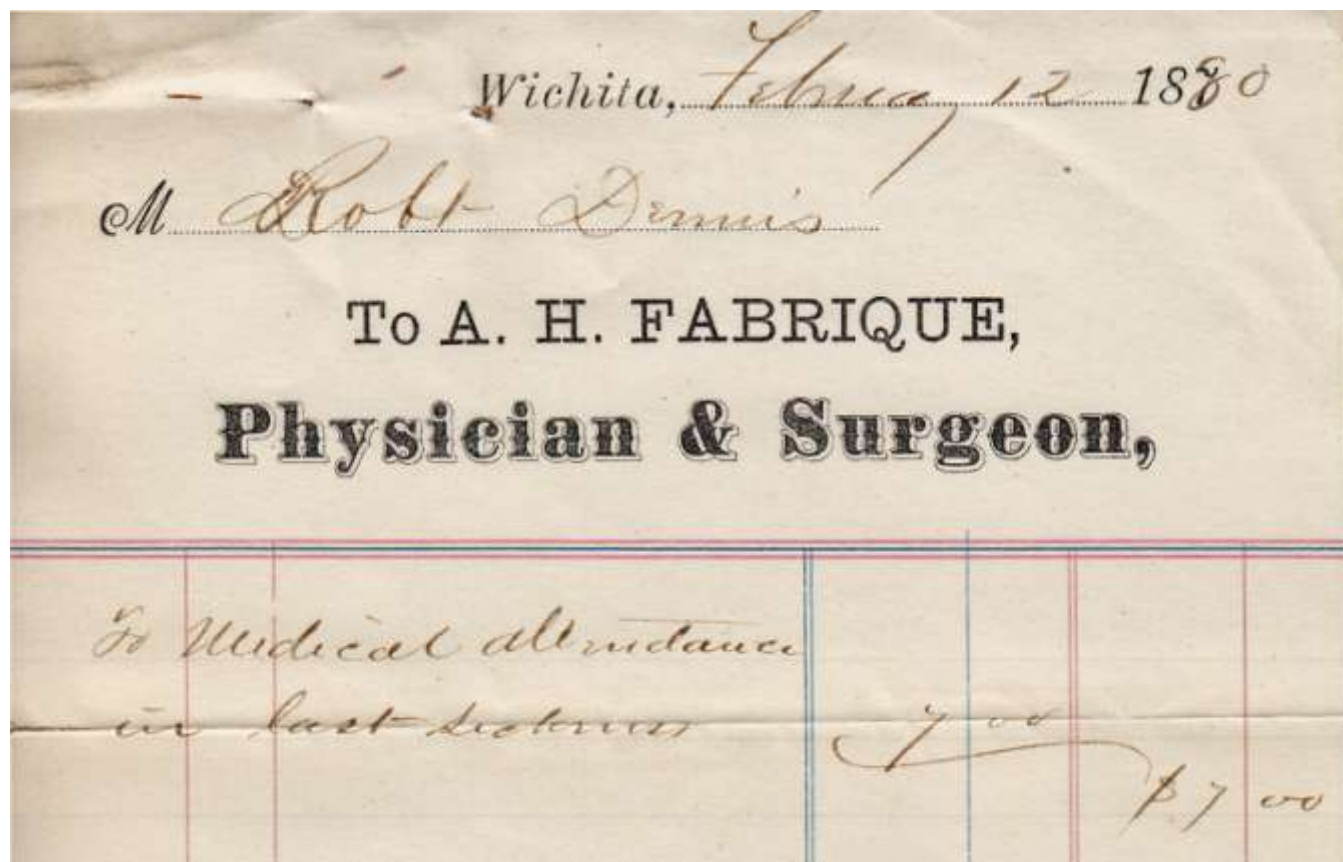
INDEX

Adams	10	Cameron	10	Farmer	17
Allen.....	25, 27	Carder.....	3	Farr	11
Allison.....	12	Carpenter.....	18	Ferguson.....	10
Argabright	12	Chambers	10	Findlay	16
Armbruster	11	Clark.....	18	Fisher.....	10, 27
Arvidson.....	10	Clasen.....	11	Flansburg.....	13
Attebery.....	10	Clifford.....	11	Folks.....	24
Aves	18	Cline.....	11	Forward	18
Babb	11	Coffman	19	Freeland.....	11
Bailey	3	Conklyn.....	4	Freund	16, 17
Baker	17, 19	Cooke	19	Fryer	10
Baldwin	7, 25	Cordeiro	25	Fulton	12
Bancroft.....	26	Corfman	13	Fultz	13
Bear	25	Cox	13	Galloup.....	10
Beard	18	Cozad	3	Garner	13
Bensch.....	24	Craig.....	11	Gibbs	11
Bilderback	19	Crawford	14	Gibson	16
Bird	17	Dabney	12	Gilbert	24
Bishop	12, 13, 19	Dagner.....	25	Gilchrist.....	16
Bissantz	16	Damon.....	11	Glahn.....	13
Bissell.....	17	Daugherty.....	10	Gleason	13
Black	24	Davidson	4, 12	Glines	11
Blake	10	Davie	13	Goodwin.....	10
Bolte.....	4	Davis	11, 16, 19	Gorl	17, 18
Bowden	13	Deering.....	18	Graham.....	18
Bowdish	10	DeLong	12	Greiffenstein	5
Bowlus	12	Dennett.....	18	Hagler.....	12
Boyd.....	13	Dickerson	13	Hall.....	6, 17
Brady(dey)	11	Dickson	16	Hamerson	10
Bragunier.....	11	Dirlam	13	Hamm.....	19
Branson	5	Ditgen.....	17	Hammon.....	11
Brinkman.....	16	Dobbin.....	12	Hanning.....	19
Brown.....	3	Doffing.....	10	Hardesty	11
Brueggemann	17	Doramus.....	12	Harris.....	7
Bryden.....	26	Drake.....	13	Harryman	13
Bunten	10	Dunlap.....	12	Haward.....	18
Bunton.....	16	Dye	12	Haywood	4
Burke.....	10	Dyer.....	5, 10	Hennings	13
Burns	13	Eakle	3	Henry.....	4, 5
Burr	17	Ebersteine.....	10	Henshaw.....	17
Burton	13, 17	Ellis	11, 13	Hensley	17
Busch.....	18	Emmert.....	5	Hess.....	10
Bush	10	English	4	Hiatt.....	13
Button.....	10	Exton	4	Hibberd	16
Cain	18	Fagan.....	26	Higgins.....	16
Caldwell	4	Faire	25	Hill	5, 12, 13
Callahan	18	Farey	5	Hills.....	6

Index, continued

Himmelwright	17	Longsdorf	27	Oneal	19
Hinkle	3	Loosley	18	Osmon	12
Hiser	13	Loshbaugh	17	Osthoff	12
Hladik	12	Lott	11	Owen	12
Hobson	7, 24	Luttgen	12	Oyler	11
Holland	11	Lyon	19	Page	17
Holt	17	Maixner	12	Paisley	12
Hoover	4, 17	Manahan	11	Parks	11, 12
Howard	11	Manhold	10	Pauley	10
Howe	17	Mann	24	Payne	11
Huddleston	12	Markee	11	Peak	11
Hudson	11	Martin	12, 19	Pearce	12
Hull	19	Martsof	4, 24	Peck	10
Hunsaker	19	Massey	18	Penny	10
Hurd	18	Matson	12	Philbrick	13
Hyde	13, 24	McAndrews	11	Pittenger	6
Jackson	11, 13	McCarty	18	Poff	4
Jarvis	3	McCormick	12	Porter	12
Johnson	18, 19, 24, 26	McCullough	12	Price	27
Jones	18	McDowell	12	Prickett	10
Jurgens	17	McHugh	11	Purcell	11
Karatofsky	7, 24	McKillip	27	Reber	13
Keith	17	McKinley	3	Rechif	12
Kellogg	14	McMahan	11	Rector	3
Kelum	11	McPherson	13	Redden	5
Kennedy	25	McQuiston	25	Reed	18
Kenoyer	11	Mead	14, 15	Reese	7
King	3, 19	Meech	24	Reiness	24
Klingman	11	Miller	12, 17	Rentfrow	4
Knapp	4	Minick	12	Reynolds	12
Knowles	12	Miser	13	Rhodes	5
Kramer	17, 24	Moore	13	Rice	12
Kuhls	25, 26	Morris	11, 13	Richards	24
Lacy	11	Morrison	13	Riley	4
Laflin	24	Mount	17	Rixz	18
Larkin	13	Mueller	12	Roberson	11
Laux	25	Munger	14	Robins	13
Lebhart	10	Murphy	4, 11	Robinson	17
Lees	13	Neibuhr	10	Rothwell	5
Lent	13	Newland	12	Russell	5, 24
Lett	27	Nichols	10	Schattner	5
Lies	10	Nickell	12	Schlichter	24
Liming	11	Norcross	17	Schmidt	17
Lipperd	11	Norris	3	Schweiter	12
Little	17, 18	Oatley	5	Scott	10, 11
Livengood	12	O'Gara	18	Scroggy	18
Loevenich	19	Oldridge	18	Shannon	24
Logan	5	Oliver	16	Shaw	13
Logerman	10	Olmsted	19	Shearman	18

Sherman	10, 17	Tate	11	Wheeler	5, 27
Shlichter	5	Tayer	19	White	12
Shuman	24	Taylor	10, 12	Whiting	12
Sieloff	17	Tester	13	Wiggins	10
Simmons	11	Thomas	12, 24	Williams	13
Sites	10	Thornton	11	Willian	13
Skinner	18	Thorp	18	Willis	19
Sluss	5	Tracy	11	Wilmot	18
Smith	10, 13, 18, 26	Traver	10	Wilson	10, 16, 17, 18
Snell	12	Traylor	19	Wimp	16
Snyder	13	Turner	12	Winchester	18
Southwell	11	Tuttle	12	Winger	25
Spillman	3	VanZandt	17	Wood	13, 17
Splinters	19	Vestal	13	Woods	10
St Clair	5	Walden	11	Woodworth	11
Stanley	6	Ward	16	Wright	12
Stephens	19	Warner	13	Wyckoff	12
Stevens	19	Watson	19, 25	Wygal	13
Stewart	11	Webster	18	Yeaky	3
Stilts	11	Weidman	18	Yewell	13
Stinson	17	Wells	10	Young	12
Street	5	Weninger	3	Yungmeyer	10
Stubbs	11	West	3, 24	Zimmerly	7
Sullivan	10	Westfall	3		
Swanson	19	Westgate	16		



PUBLICATION ORDER FORM

Name _____

Address _____

City, State, Zip _____

Tax exemption number, if applicable _____

Publication Number/Title	Qty.	Unit Price	Total Price

Make check payable to, and mail to:

Midwest Historical and Genealogical Society
PO Box 1121
Wichita, KS 67201-1121

POSTAGE/ HANDLING (see chart below)	
SUBTOTAL	
* ‡ KS SALES TAX (if applicable) ____ %	
TOTAL DUE	

SHIPPING AND HANDLING CHART

Merchandise Total	Shipping Charge
\$0.01 - \$24.99	\$4.00
\$25.00 - \$49.99	\$5.00
\$50.00 - \$99.99	\$7.00
\$100.00 - \$299.99	\$12.00
For each \$100.00 of merchandise above \$300.00, add \$4.00 to the \$12.00	

‡ Sales tax applies to Kansas destinations only; tax is the % rate at the delivered destination.

* If you are tax exempt send copy of exemption certificate with order.

Tax Exempt # _____



MIDWEST HISTORICAL AND GENEALOGICAL SOCIETY

PUBLICATIONS FOR SALE

Use order blank on last page to order

Pub #	Publication Title	Price
Wichita and Sedgwick County, KS		
101	History of Wichita and Sedgwick Co., KS. Past and Present, 1910, Vols. 1 and 2 in one book, reprint, 956 pgs., indexed. (hardbound)	\$45.00
21	Wichita City Death Certificates from the City Directory and cemeteries (1887-1899). Indexed, 304 pgs.	\$35.00
22	Flanagan-Hunt Mortuary Records, Vol I, Apr 16, 1912 - Apr 15, 1915, 150 pgs.	\$20.00
23	Flanagan-Hunt Mortuary Records, Vol II, Apr 1915 - Nov 1917, 150 pgs.	\$20.00
29	Wichita Fire Fighters 1881-1981 (History & Personnel Records), 158 pgs	\$20.00
24	1878 Wichita City Directory names, 34 pgs	\$6.00
25	1883 Wichita City Directory names, 72 pgs	\$10.00
26	1885 Wichita City Directory names, 114 pgs	\$15.00
27	1886/7, 1894, 1900 Wichita Business Directories, 75 pgs. Compiled by Barbara Marsh.	\$10.00
49	Abstracts of Marriages, Deaths, and other news items from Wichita newspapers and KS census records. Sept 1 to 6, 1879; and Sept 1, 1884 to Mar 31, 1885. Compiled by Jerry Stout. 94 pgs., indexed	\$15.00
2	Sedgwick Co., KS Marriage Records Book 1, 204 pgs, County Books #A-D, May 7, 1870 - Oct 22, 1889, index. Compiled by Bill Pennington	\$25.00
3	Sedgwick Co., KS Marriage Records Book 2, 213 pgs, County Books #E-H, Oct 22, 1889 - Jul 13, 1901, index. Compiled by Bill Pennington	\$25.00
4	Sedgwick Co., KS Marriage Records Book 3, 212 pgs, County Books #I-L, Jul 15, 1901 - Nov 11, 1908, index. Compiled by Bill Pennington	\$25.00
5	Sedgwick Co., KS Marriage Records Book 4, 189 pgs, County Books #M-P, Nov 11, 1908 - Jan 22, 1913, index. Compiled by Bill Pennington	\$25.00
6	Sedgwick Co., KS Marriage Records Book 5, 214 pgs, County Books #Q-T, Jan 18, 1913 - Sept 21, 1917, index. Compiled by Bill Pennington	\$25.00
7	Sedgwick Co., KS Marriage Records Book 6, 185 pgs, County Books #U-X, Sept 22, 1917 - Aug 4, 1920, index. Compiled by Bill Pennington	\$25.00
19	Sedgwick Co., KS Marriage Records Book 7, 253 pgs, County Books #Y-BB, Aug 4, 1920 - May 17, 1924, index. Compiled by Bill Pennington	\$25.00
20	Sedgwick Co., KS Marriage Records Book 8, 215 pgs, County Books #CC-FF, May 19, 1924 - Dec 1, 1928, index. Compiled by Bill Pennington	\$25.00
70	Sedgwick Co., KS Marriage Records Book 9, 192 pgs, County Books #GG-JJ, Dec 1, 1928 - Nov 25, 1933, index. Compiled by Bill Pennington & Kimberly Rix	\$25.00
72	Sedgwick Co., KS Marriage Records Book 10, 196 pgs, County Books #KK-NN, Nov 25, 1933 - Aug 22, 1938, index. Compiled by Bill Pennington & Diana Miller	\$25.00
73	Sedgwick Co., KS Marriage Records Book 11, 196 pgs, County Books #OO-QQ, Aug 22, 1938 - Dec 27, 1941, index. Compiled by Bill Pennington & Diana Miller	\$25.00
28	1888 & 1891 Sedgwick Co., KS Directory Names, 20 pgs. (Wichita not included)	\$5.00
30	1903/4 Sedgwick Co., KS Directory Names, 39 pgs.	\$6.00
33	Sedgwick Co., KS Naturalizations and Declarations of Intentions, 1870 - 1906, 93 pgs. Compiled by Barbara Marsh	\$12.00
9	Index to Portrait and Biographical Album of Sedgwick Co., 1888, 166 pgs.	\$22.00
10	Area Keys: Sedgwick Co, KS, 52 pgs.	\$7.00
58	Sedgwick Co., KS Landowners & Tenants Directory, 1971, 52 pgs.	\$7.00
60	Obituaries from the Wichita Beacon Nov 2, 1885 - Jun 11, 1886, 14 pgs.	\$4.00
11	List of Cemeteries in Sedgwick Co., KS, w/map, 1981, 7 pgs.	\$4.00
71	Probate Index-18th Judicial District, Sedgwick Co., KS-1870 to Nov 1917	\$25.00
Butler County, KS		
38	Butler Co., KS Wills 1869 - 1901, 60 pgs.	\$10.00
36	Area Keys, Butler Co., KS, 50 pgs.	\$7.00
37	Butler Co., KS Marriages 1861 - 1885, 74 pgs.	\$10.00

MIDWEST HISTORICAL & GENEALOGICAL SOCIETY, INC.
 PO BOX 1121
 WICHITA, KANSAS 67201-1121

Change Service Requested

Publications for Sale, Continued

Pub #	Publication Title	Price
Chautauqua County, KS		
47	Chautauqua Co., KS Marriage Records, Book 1, County Books #A-D, index, 103 pgs, Jun 5, 1870 - Dec 29, 1891. Compiled by Charlotte Bennett	\$15.00
48	Chautauqua Co., KS Marriage Records, Book 2, County Books #E-H, index, 86 pgs, Jan 6, 1892 - Aug 22, 1905. Compiled by Charlotte Bennett	\$15.00
48A	Chautauqua Co., KS Marriage Records, Book 3, County Books #I-L, index, 112 pgs, Aug 22, 1905 - Apr 25, 1926.	\$15.00
50	Chautauqua Co., KS Marriages and Deaths From CEDAR VALE COMMERCIAL, Dec 1984 - Dec 1985, 12 pgs.	\$5.00
Harvey County, KS		
39	Harvey Co., KS Marriages 1872 - 1895, 120 pgs	\$15.00
52	Harvey Co., KS Marriages 1896 - Apr 24, 1898, index, 21 pgs	\$5.00
51	Deaths, Marriages and Births from Newton, KS local newspapers, selected from 1887 - 1888, 1892 - 1894, 1901 - 1902, 1915. 94 pgs, indexed.	\$25.00
Sumner County, KS		
41	Argonia Cemetery Index, Sumner Co., KS, 47 pgs.	\$6.00
203	Tombstone Inscriptions, Sumner Co., KS (hardbound), 406 pgs. Compiled by Robert Brady.	\$45.00
42	Sumner Co., KS Marriages, Book A, 1871 - 1880, index, 34 pgs. Compiled by Barbara Marsh.	\$6.00
59	Index to Sumner Co., KS Portraits & Biographical Album, 35 pgs.	\$6.00
204	Caldwell Cemetery, Sumner Co., KS (hardbound), 227 pgs, Dilmond D. & Evelyn I. (Sturm) Postlewait	\$45.00
Territorial Kansas		
44	Kansas Territorial Marriages, 1854 - 1861, 24 pgs.	\$6.00
43	Kansas Territorial Deaths, 1854 - 1861, 21 pgs.	\$6.00
62	Kansas Marriages, Births & Deaths Before 1854, 48 pgs.	\$10.00
Midwest Historical & Genealogical Society		
104	Past Issues of the MHGS REGISTER Any three issues.	\$2.50 \$6.00
53	Topical Index of MHGS REGISTER, Vols I -XXXI, 27 pgs.	\$3.00
105	Historical Buildings Note Cards, packet of 4, one each of original sketches of the Wichita post office, livestock exchange, Missouri Pacific depot, and the Santa Fe station	\$6.00
Midwest Area		
201	Index of Grant Co., OK Land Patents, 112 pgs (hardbound) with maps. Dilmond D. & Evelyn I. (Sturm) Postlewait	\$25.00