



MIDWEST Historical and Genealogical REGISTER

*VOL. 49, No. 3
OCT-NOV-DEC, 2014
WICHITA, KS*

MIDWEST HISTORICAL & GENEALOGICAL SOCIETY, INC.

P.O. BOX 1121, WICHITA, KANSAS 67201

<http://mhgswichita.org>

info@mhgswichita.org

(316) 264-3611

ISSN 0271-8685

BOARD OF DIRECTORS

President Elaine Sunde president@mhgswichita.org
Vice-President Jim Scharnhorst programs@mhgswichita.org
Secretary Paul Smith secretary@mhgswichita.org
Treasurer Janet Sherman treasurer@mhgswichita.org
Librarian Julia Langel library@mhgswichita.org

COMMITTEE CHAIRS

Alert Editor Lucille Williams alert@mhgswichita.org
Building and Grounds Roy Hughes info@mhgswichita.org
Membership Bev Jackson members@mhgswichita.org
Publicity Francene Sharp publicity@mhgswichita.org
Register Editor Ann Hathaway Boll register@mhgswichita.org
Technology Vincent Hancock tech@mhgswichita.org



The MIDWEST HISTORICAL & GENEALOGICAL SOCIETY, INC.

is a non-profit, educational organization

with a research library located at 1203 North Main, Wichita, Kansas.

Hours are 9:00 AM to 4:00 PM Saturdays and Tuesdays, unless otherwise notified.

Correspondence with the Society should be mailed to PO Box 1121, Wichita, KS, 67201.

Address membership dues to the attention of the Membership Chairman.

Cover drawing by Charles Sanderson

House drawing by Sharon Korst

The **Register** is published quarterly by the Midwest Historical & Genealogical Society, Inc. to provide information about genealogy and regional history to its members and interested parties.

Publication mailing dates: May 15, August 15, November 15, and February 15.

Back Issues: Recent issues are available for \$2.50 each, postpaid.

Membership: Includes one issue of the Register each quarter. Dues received after the publication date will receive back issues for that year with the next regular mailing.

Membership Year –

April 1 through March 31

Student (17 & under)	\$10.00 / \$20.00
Libraries	\$20.00 / \$40.00
Individuals	\$25.00 / \$40.00
Couples	\$30.00 / \$45.00
Sustaining	\$50.00

Lifetime Membership Fees

One time only

Life (single).....	\$300.00
Life (couple)	\$500.00
Benefactor.....	\$800.00

Queries: Members may submit two queries per issue. Non-member queries are \$1.50 each or \$2.50 with a copy of the Register in which the query appears.

Submissions: Send queries and articles for publication to MHGS, Attn: Quarterly Editor. Include the date and your signature with “permission to publish.”

All material for publication is subject to editing. Every effort is made to publish accurate material. Midwest Historical & Genealogical Society, Inc. and the Editor will not assume responsibility for errors on the part of the contributor. We are not responsible for publishing rights of contributed material. MHGS does not buy articles for publication.

Advertising: Ad space is sold in 2½” x 2½” block units, 12 blocks per page. Cost for a single block is \$5.00 per issue. Contact the Editor for additional information.

Library/Office Location: 1203 N. Main, Wichita, Kansas, 67203, (316) 264-3611

REGISTER

A Magazine for members and friends interested in Genealogy

Volume 49 No. 3

OCT-NOV-DEC 2014

Table Of Contents

ED. NOTE:.....	66
FULTZ PEDIGREE CHART	67
THE WICHITA WEEKLY EAGLE	68
IN MEMORY OF... ..	72
NEW MATERIALS IN THE WICHITA PUBLIC LIBRARY	73
MARRIAGE RECORDS	77
WICHITA HISTORICAL PANEL NO. 86	81
WICHITA HISTORICAL PANEL NO. 87	82
18TH JUDICIAL DISTRICT PROBATE INDEX.....	83
NEW MATERIALS IN THE MHGS LIBRARY	87
THE WICHITA WEEKLY EAGLE	88
UPCOMING MHGS EVENTS	92
INDEX.....	93
PUBLICATION ORDER FORM.....	96

Library/Office Location:

1203 N. Main
Wichita, Kansas 67203
(316) 264-3611

Ed. Note:

Well, here we are again at the end of another year. Where did this year go, and so quickly, too? I'm writing this the day after Thanksgiving, and it seems like just yesterday was New Year's Day. I do know we had an election in there somewhere, because it seems as though I spent a lot of time recycling political mailers and hanging up on political robocalls. Thankfully that cycle won't start again for at least another year or so. I hope...

Since the last issue of the *Register* was published, two MHGS members passed away. W. Macy Lewis and his wife Ann were longtime members of MHGS; Mr. Lewis passed away September 16. I didn't know him well, but I did meet him several times when he came into the library to renew his membership or attend an MHGS program. He was always smiling, so positive and cheerful I would swear it was contagious. It was always a pleasure to see him come into the library.

Jean Wooten was a mainstay at the MHGS library for a number of years; in fact, I can't remember a time when Jean wasn't an assistant librarian. She and her husband Keve were faithful volunteers and supporters of MHGS, always willing to lend a hand to whatever project was in the works. Part of Jean's self-assigned duties were to provide toilet paper, paper towels, and trash bags for the MHGS library, she paid for those items out of her own pocket. When Donna Woods retired as head librarian in early 2008 and we were unable to find another head librarian right away, Jean agreed to be the Saturday librarian. Without Jean and Keve, we would not have been able to keep the library open until we found a new head librarian. I truly enjoyed Jean's very dry sense of humor; at least once every time we worked together, she came up with something that had me laughing out loud. Jean's health finally got bad enough several years ago that she could no longer volunteer at the library, but I think of her often when I'm there, especially when something happens I know she would find absolutely hilarious. Rest in peace, Jean, and I have a feeling you're still keeping an eye on the library, and the librarians. ☺

Have you noticed the new Special Interest Group at MHGS? Lucille Williams and her daughter Sandi Bush have started the DAR SIG to help people become members of the DAR. They will help you determine what records you need to find in order to qualify as well as help with the application process. This Special Interest Group meets at the library on the third Saturday of the month at 1 PM; the next meeting will be December 20.

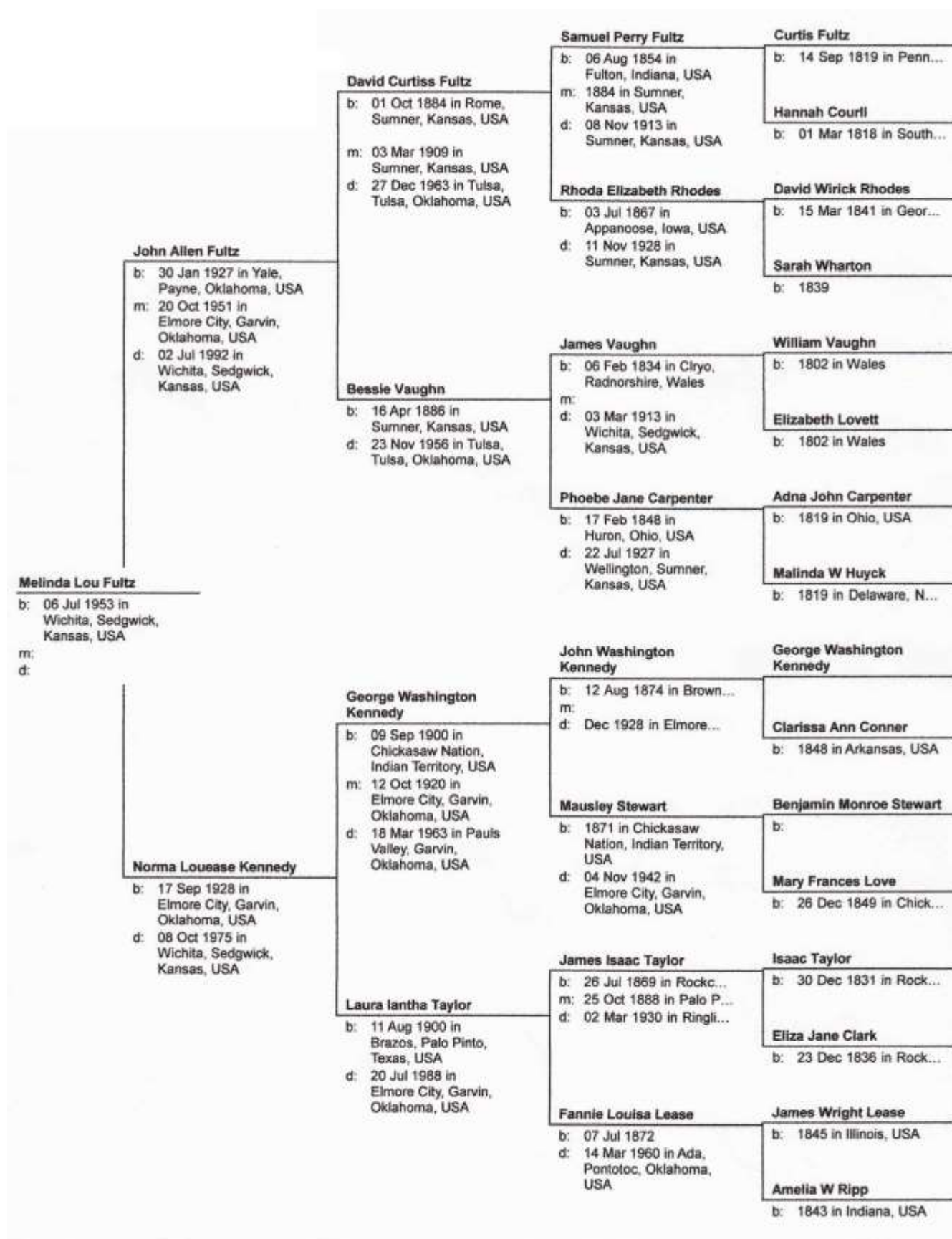
Speaking of new things, have you noticed the MHGS building is looking more presentable these days? The siding got washed earlier this fall, repairs have been made to the exterior woodwork of the porches and around the windows, and the guttering next to the front steps is no longer held together with a bungee cord! Many thanks to Roy Hughes for coordinating all this effort! We also have a planting of periwinkles under the tree next to the driveway to the parking lot, I'm looking forward to pretty blue flowers in the spring, as well as seeing what comes up in Vince Marshall's prairie plot north of the parking lot.

Well, I think that's about all I have to say this time around. I hope you all have a wonderfully Merry Christmas and a happy New Year. Safe travels, see you next year!

Ann Hathaway Boll
Register Editor
register@mhgswichita.org



Fultz Pedigree Chart



The Wichita Weekly Eagle

Friday, 3 October 1872, page 3

Column 1

CITY AND COUNTY NEWS.

The EAGLE is just six months old to-day.

The carpenters are at work on Wm. Greiffenstein's residence.

Good hard wood is worth six dollars a cord; coal eight dollars a ton.

A small party of city bloods are out this week on a buffalo massacre.

The Butler county fair commenced yesterday and will close to-morrow.

Stanley & Kirkpatrick have formed a co-partnership for the practice of law.

The Union Sabbath school was reorganized last Sunday and a new set of officers elected.

The basement story of Mr. English's residence is completed ready for the brick work.

From some oversight the republican county ticket was not put at the head of last week's paper.

The M. E. Church is almost completed – will be ready for dedication two weeks from next Sabbath.

Proceedings of the democratic and liberal convention of Sedgwick county will be found elsewhere.

See dissolution notice of Black & Nixon in another column, which probably will be interesting to somebody.

The A., T. & S. F. R. R. will see excursion tickets to the St. Louis fair. See their notice in the special column.

The Presbyterian society have rented the hall in the Eagle block, and will hold services there until further notice.

Mr. Litzenberg, who spent last Saturday and Sunday in town, reports business lively and all else serene at El Paso.

Albert Emerson has been appointed justice of the peace, to fill the vacancy occasioned by the resignation of W. H. Roarke.

Letters of administration have been granted to James McCulloch in the estate of H. H. Lindsay. See official notice elsewhere.

The hook and ladder apparatus has arrived. We would judge from its appearance that it will throw water over any part of the city.

Messrs. Sluss and Dyer, two prominent members of the Wichita bar, have entered into co-partnership for the practice of their profession.

L. C. Morris, our nurseryman just east of town, is making arrangements to contract for the setting and cultivation for a term of years, of Osage orange hedges.

James D. Porter, of Bryant's Station, Ills., bought a quarter section of land of Steele & Smith, near Cowskin Grove, where a town will be laid out this week.

J. H. Black¹ – he of the Diamond Front – has returned from his visit east. J. H. had bought out his partner, Mr. Nixon, and will continue to do business at the old stand.

We ascended to the top of one of the highest buildings in the city, one day this week, and while there counted twenty-one herds of cattle, all within two miles of the city.

The M. E. social at the Avenue House last Thursday night, was a decided success. Those who failed to attend missed a pleasant evening's entertainment and a nice oyster supper.

The Wichita Savings Bank has been evincing good taste and enterprise by putting up a very fine set of ornamental curtains. The curtains are made of a gauze of fine wire, elaborately painted and finished.

The Young Men's Social Club held its first entertainment last Thursday evening, and it was represented as being an entire success. The party was elect, though quite numerous, and everything passed off most happily.

We were honored with a call this week from J. L. Abbott, one of the leading members of the Sumner county bar. Mr. Abbott reports everything in a flourishing condition in Sumner, except politics, which is somewhat mixed.

Davis Peyton, one of Eldorado's live business men, accompanied by his brother-in-law, Dr. Culbertson, of Indiana, visited our city this week. They

¹ James H. Black was born 28 Jan 1846 in Cleveland, Ohio and died 19 Jan 1924; he is buried in Highland Cemetery in Wichita. His wife Jessie A. Hunter Black was born 15 July 1853 in Philadelphia and died 3 Aug 1923; she is also buried in Highland Cemetery.

expressed themselves greatly surprised at the metropolitan proportions of our city.

Hon. J. R. Mead has the brick and material all on the ground and building has been commenced on his residence and will be pushed to a speedy completion. The architectural design is superb, and when completed will be a fine residence.

Martin, Phillip & Co. have consummated some good trades in city property for improved farm property – aggregate value \$8,000. They have also sold five lots on Douglas avenue, on which three business buildings will be erected immediately.

Cather² & McKee's³ grist mill is progressing quite rapidly. We understand that they will be prepared to grind before cold weather, but don't know whether the information is reliable or not. The framework of the building will be up this week, we guess.

M. M. Emanuel received this week four cases of ladies' hats, trimmed and untrimmed, of the latest style, which he offers at eastern prices. Those wishing to purchase a hat of the latest style can be accommodated by calling at the Bazar, 76 Main street.

That beautiful set of jewelry. "Brown" is the man. Everybody that knows "Brown" knows that if he has a weakness outside of omnibuses, stages and horses, and the care and comfort of passengers that it is for a complete set of jewelry. We want a free ride to the depot.

Martin, Phillip & Co. have been informed by the home office of the Mutual Life insurance company of Chicago that Mr. H. H. Lindsay's life policy will be paid in full. The amount is \$5,000. He had but shortly before his death joined the local board of the Mutual Life of Chicago.

That fellow that makes so much noise every day down near the corner of Douglas avenue and Main street is Tom Conklyn, the city auctioneer. He has opened an auction and commission house next door

south of his "Cabin," and those whose [sic] wishing anything done in that line will find him "old biz."

The most of the Wichita boys who attended the Kansas City fair have returned. From the description of things and the satisfaction expressed over the treatment received, the fair must have been the most complete success in every respect. James McCulloch, especially, is loud in praise of the fair and the people of that city.

The railroad business, we are informed, is greater at Wichita than at any other point on the line of the A., T. & S. F. railroad. As a straw indicating something of the travel to and from this point, we mention that there were sold at the depot here on September 26th, \$698.85 in tickets. This is but slightly more than the average.

The Winfield fair is represented as being a very great success indeed for a new county. The grounds were ample, stalls, hall and enclosure complete, and the weather the most favorable. We understand Joe Hooker's horse, from this place, took the first premium, and Mrs. Wells, of Wichita, took the first premium for lady equestrianism.

The first number of the Wellington *Banner* has made its appearance at the county seat of our sister county of Sumner. G. P. Garland, a lawyer and writer of ability, is editor and proprietor. We congratulate the good people of Wellington in securing the services of men of the snap and enterprise of Mr. G., the first number of whose paper shows him to be wide awake to every important political and material interest of the great county of Sumner. When a town chooses the right man they will make money by seeing to it that he is well supported. Success to Mr. Garland, and may his *Banner* never cease to wave.⁴

Column 2

Liberal and Democratic Convention.

While in Topeka, the delegates to the liberal-republican and democratic conventions, from the counties comprising the 25th senatorial and 13th judicial districts, met together and organized themselves into a district executive committee, for the purpose of calling a convention in the district. Mr.

² Fabricus Augustus "Gus" Cather, born 1840 probably in Taylor County, (West) Virginia, died 7 October 1876 and is buried in Dunlap Cemetery, Rose Hill, Butler County, Kansas. He is buried with his mother Barbara (McDonald) Cather (b. 1797, d. 14 September 1876) and youngest son Willie Mal-lonee Cather (b. 1873, d. 1876).

³ Amos Anderson McKee, born 28 Dec 1829 probably in Frederick County, Virginia, died 10 June 1913 in Hampshire County, West Virginia. A distant cousin of Cather, he evidently returned to West Virginia prior to the 1875 Kansas census.

⁴ Unfortunately, the Wellington *Banner* lasted for just four weekly issues, the final one published on October 16, 1872. By the 1875 Kansas census, George P. Garland was practicing law in Augusta, Butler County, Kansas.

T. McIntyre, of Cowley, was elected chairman, and J. E. Martin, of Wichita, secretary. The chairman and secretary were empowered to call a district convention, at such time and place as, in their judgment, might seem best. In accordance with the action of that committee, the following call is issued:

**LIBERAL REPUBLICAN AND DEMOCRATIC
SENATORIAL AND JUDICIAL CONVENTION.**

A delegate convention of the liberal republican and democratic parties of the 25th senatorial and the 13th judicial district, for the purpose of nominating candidates for state senator and district judge, will be held in Wichita, Sedgwick county, Kansas, on Saturday, October 12th, 1872, at 2 o'clock P. M.

The counties comprising said district are entitled to the following number of delegates each:

Reno	3
Harvey	4
Sedgwick	5
Sumner	4
Cowley	4
Howard	5
Butler	5
Greenwood	4

T. MCINTIRE, President,
Arkansas City.

J. E. MARTIN,
Secretary, Wichita.

Delegates on their arrival will report at the office of Martin, Phillip & Co., Main street, Wichita.

During the late session of the district court some of the officers were compelled to vacate the court house for want of room. Since the adjournment the county officers have moved back into their old quarters. This is the explanation of the county clerk's office being one place one day and another place the next day, and people should not lose their tempers over what could not be helped. The man who grumbled because he had to stand out on the pavement and sign the county clerk's receipt book through a window had as well have laughed and taken it good naturedly. We have no doubt that the county commissioners will put the officers and books in a more safe and comfortable place as soon as they can get such a place at a price that will justify – the greatest objection to the present place, really is the exposed condition of the records.

Capt. King, the cattle king of Texas, is in Wichita, with his wife and youngest son. Mr. K. is the possessor of immense wealth, owns cattle almost beyond county, and land counted by the hundred leagues. He commenced last year to fence his cattle range. Something over forty miles of fence is complete, but it will take another year to get his little pasture fenced in. He has hundreds of peons in his employ, who know no other lord or governor save their employer, Capt. King. Mrs. King is an intelligent lady of refinement and education, her dress evincing the most cultivated taste. Mr. K. is rather a plain business man, who goes about his daily business without show or ostentation. Like most all of the Texas men whom we have become acquainted with this season, he is a social and congenial companion.⁵

Probably few of our citizens are aware that Messrs. Hobson and Shuman have completed arrangements for the opening of a first-class jewelry establishment in one of the rooms of the Eagle block, which is now being fitted up. The well known financial ability of these gentlemen warrants us in saying that something superb may be expected. We have been permitted to peep at some of their elegant and elaborate stem-winding watches, pebble-glass spectacles, rich diamond rings, pins, and studs, and immensely brilliant jewelry sets. They will engage some competent expert to run the establishment. Mr. Hobson will still give his undivided attention to the building of truss bridges and Mr. Shuman will continue to look after his real estate and other interests.

Prairie fires have already been set going on portions of the cattle range southwest of town. The herders have been trying to subdue it in places, as a destruction of the grass at this time of year would prove very bad. The grass on both valley and upland this season is extremely heavy, and our farmers and others with feed stored away cannot be too careful in guarding against this terrible element. Mow and plow around every hay and grain stack that you have, around every house and shed,

⁵ Captain Richard King was born 10 July 1824 in New York City and died 14 April 1885 in San Antonio, Texas. At the time of his death, his ranch in south Texas encompassed over 600,000 acres.

([http://en.wikipedia.org/wiki/Richard_King_\(Texas\)](http://en.wikipedia.org/wiki/Richard_King_(Texas)))

and keep an eye on your stock when fires are in sight.

Capt. W. A. Shannon⁶, of Augusta, was over to the metropolis on Monday. The captain was looking well and feeling sanguine touching the result of this fall's election. He informed us that at the county convention held at Eldorado, last Saturday, Hon. Thos. Baker received the nomination for representative, and that the delegates to the judicial convention were instructed for Judge Campbell. Further he had not heard. The captain sensible hopes for a speedy and satisfactory solution of the many sectional and political troubles of that county.

We noticed while at Wichita, on Monday, placards all over the streets, and in the business houses announcing "new keno rooms open." Where the morals of a town are at so low an ebb, it would not be surprising to see houses of prostitution advertised in the morning papers. — Wellington *Banner*.

Come, friend Garland, not quite so hard. The parties committed the above nuisance, were promptly and roundly fined by our authorities, and we do not expect a repetition of such a stain upon the good government of our young city.

At an election of officers of the Sunday school, last Sunday, the following persons were elected for the ensuing term: F. C. Martsolf, superintendent; D. A. Mitchell, assistant superintendent; Wm. A. Reese, treasurer; A. A. Hyde, librarian; W. Scott Corbett, secretary; D. C. Caldwell, chorister; J. M. H. Allen, organist. The hour of meeting was changed from half-past nine a. m. to two o'clock p. m. On and after October 13th its place of meeting will be in Eagle hall.

The regular annual congregational meeting and sociable of the Presbyterian church will be held at the church next Monday evening, as half-past seven o'clock. The exercises will consist of addresses, report of the treasurer and the election of the trustees for the ensuing year. Some good music, refreshments and a good time generally may be expected, and no begging. A cordial invitation is ex-

⁶ Most likely William A. Shannon, born 5 July 1816 in New York, died 26 Dec 1898, buried Elmwood Cemetery, Augusta, Butler County, Kansas. He served in the Kansas State Militia during the Civil War.

tended to every one, whether members of the church or not.

Hon. H. C. Sluss and Hon. J. A. Stevenson have been invited to address the Grant and Wilson club at Newton next Saturday night. Judge Muse has fitted up a room on purpose for the campaign, which is they why we are led to remark that patriotism like his has something tangible about it. Sluss and Stevenson, we have no doubt, will do themselves credit, and meet the expectations of those who extended them the invitation.

Hon. J. R. Mead returned from a flying visit to his old home in Davenport, Iowa, last Saturday night, looking well. His many large interests and the immense amount of business continually demanding his attention, does not permit him to take many holidays, but when he does get a chance to run away from the bank, the bridge, the town and his Indian trade for a day or two, he all the more keenly enjoys it.

MASONS, ATTENTION! — A regular communication of Wichita Lodge, No. 99, will be held at the lodge room, in the Eagle block on Monday evening, October 9th, at 7 o'clock sharp. Business of importance will be transacted. The members are requested to take due notice and govern themselves accordingly.

W. H. Roarke⁷ vs. Rocke, one of Wichita's duly commissioned esquires and conservators of the peace is *non est inventus*, "clean done gone." He was so suddenly called away that many of his friends had neither time to take his parting hand or present their little bills, yet we are not left without consolation and hope that Wichita's gain may prove somebody else's loss.

Column 3

Mr. Ashbaugh⁸, editor and proprietor of the Newton *Kansan*, in company with Capt. Payne, paid

⁷ William H. Roark(e), born 1843 in Canada, living in Leavenworth, Kansas at the time of the 1870 federal census, with the occupation of 'lawyer'. He was one of the people signing the petition for the incorporation of Wichita in July, 1870.

⁸ Henry C. Ashbaugh, born 27 Aug 1844 in Franklin County, Ohio, died 13 March 1916 in Lawrence, Kansas; buried in Forest Hills Cemetery, Eau Claire, Wisconsin. Editor of the Newton *Kansan* for 15 years; that newspaper is still being published today.

his respects to our city last Friday. Mr. Ashbaugh's paper is being handsomely sustained by the people of Newton. He is making a very readable paper and is truly deserving of the confidence of his people. Capt. Payne is as popular as ever, a man of not only acknowledged ability, but unswerving integrity. Contrary to the expectation of many, Newton is steadily improving and enjoying an excellent trade this summer. But she cannot help it. Harvey county is as thickly settled as any portion of the Southwest, and Newton being the principal town, must continue to grow and prosper.

MARRIED.

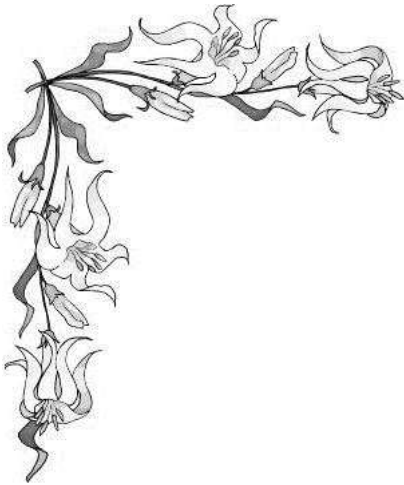
On September 25, 1872, by Rev. J. F. Nessly, Mr. David Maxfield and Mrs. May Swan, both of this city.

SPECIAL NOTICES.

STUPENDOUS ATTRACTION! – The whole country amazed at the elegant stock and low prices that

are daily offered at the Cash Dry Goods Store. Alpacas and woollens away down; kid gloves for one dollar, warranted; new goods constantly arriving and in transit. A splendid assortment of ladies' underwear. Ladies' suits and wrappers always on hand and made to order. Gents' underwear, merino and all wool, hosiery, gloves, handkerchiefs and shirts. Ladies' Lisle thread, Balbriggan and cotton hose, with a nice line of dress goods, shawls and ribbons. Come and be satisfied.

The Great Western Restaurant, 88 Main street, has been reopened by E. M. Ford, an experienced caterer, where meals will be served up at all hours of the day or night, from the best the market affords, for the moderate sum of \$4 per week. Also fresh oysters served up in first class style on the shortest notice.



In Memory Of...

Walter Macy Lewis

Died 16 September 2014

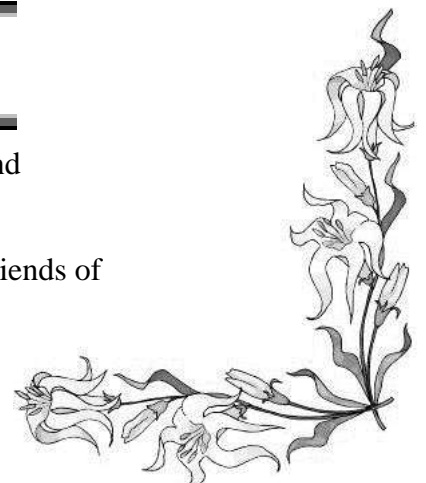
Mr. Lewis and his wife Ann were longtime and generous members of MHGS.

Gloria Jean (Stark) Wooten

11 March 1941 – 7 October 2014

Jean and Keve were Life members of MHGS, and dedicated library volunteers for many years.

We extend our deepest sympathy to the families and friends of Jean and Mr. Lewis at this sad time.



NEW MATERIALS IN THE WICHITA PUBLIC LIBRARY

GENEALOGY COLLECTION

July through September, 2014

Compiled by Michelle Enke, Manager of the Wulfmeyer Genealogy Center

- 111th New York Volunteer Infantry: a Civil War History. (R 973.7447 HUS)
124th New York State Volunteers in the Civil War: a History and Roster. (R 973.7447 LAR)
151st Pennsylvania Volunteers at Gettysburg : Like Ripe Apples in a Storm. (R 973.734 DRE)
1820 Census of Gallia County, Ohio. (R 312 O37G 1820)
1830 Census of Gallia County, Ohio. (R 312 O37G 1830)
1840 Census of Gallia County, Ohio. (R 312 O37G 1840)
1850 Federal Census for Lincoln County, Missouri. (R 312 M6785L736 1850)
1850 Federal Census for Pike County, Missouri. (R 312 M6785P63 1850)
2nd North Carolina Cavalry. (R 973.7456 HAR)
22nd Maine Volunteer Infantry in the Civil War: a History and Roster. (R 973.7441 SMITH N)
36th Infantry United States Colored Troops in the Civil War: a History and Roster. (R 973.7415 BRY)
4th North Carolina Cavalry in the Civil War: a History and Roster. (R 973.7456 RAI)
47th Indiana Volunteer Infantry: a Civil War History. (R 973.7472 WIL)
585 Raids and Counting : Memoir of an American Soldier in the Solomon Islands, 1942-1945.
(R 940.5426 KUN)
7th Tennessee Infantry in the Civil War: a History and Roster. (R 973.7468 VEN)
Abstracts of Wills of Wythe County, VA: Will Books 3 and 4, May 1822-April 30, 1837. (R 975.5773 KEG)
Abstracts of Wills of Wythe County, VA: Will Books 5 and 6, October 1837-September 1848.
(R 975.5773 KEG)
Advanced Genealogy Research Techniques. (R 929.1 MOR)
African Americans in the United States Army in World War II. (R 940.5403 BOO)
African American World War II Casualties and Decorations in the Navy, Coast Guard and Merchant Marine: a
Comprehensive Record. (R 940.546 KNO)
Alumni Directory Bethel College. (R 378.7 BET 1996)
American Grain Elevator: Function & Form. (R 633.1 LAI)
Atlas of the State of Minnesota, Containing a Map of Each County, Directories of Lakes, Cities, Minnesota
Wetlands, U.S. Wetlands and Other Miscellaneous Maps and Information. (R 912.776 ATL)
Augusta County, Virginia Baptism Records 1740-1749. (R 975.5916 CRA)
Augusta County, Virginia Indian Wars, 1754-1764. (R 975.5916 AUG)
Belligerent Rain Crows and the Middle Border War: the Kansas-Missouri Conflict, 1854-1865.
(R 978.103 FAU)
Benton County, Arkansas: Biographical and Historical Memoirs. (R 976.713 BEN)
Bible Records of North Carolina: Contributed by Persons with North Carolina Ancestors. (R 975.6 BIB)
Big Divide: a Travel Guide to Historic & Civil War Sites in the Missouri-Kansas Border Region.
(R 917.78 EIC)
Bouton--Boughton Family: Descendants of John Bouton, a Native of France, Who Embarked from Gravesend,
Eng., and Landed at Boston in December, 1635. (R 929.2 BOUTON)
Brief Sketch of the Settlement and Early History of Giles County, Tennessee. (R 976.861 MAC C)
British Army in Mesopotamia, 1914-1918. (R 940.4 KNI)
Brothers of Ark Valley: 100th Anniversary Celebration. (R 366.1 BRO)
Carey Salt Mine [Hutchinson, KS]. (R 978.183 ULR)
Carter County, Tennessee Minutes of the County Court, 1826-1829. (R 976.8984 CAR)
Carter County, Tennessee Tombstone Records. (R 976.8984 CAR)
Cessna, Wings for the World: the Single-engine Development Story. (R 629.133343 THO)
MHGS Register, Vol. 49, No. 3

WPL New Materials, continued

City and the Saloon: Denver, 1858-1916. (R 978.883 NOE)
Civil War Medal of Honor Recipients: a Complete Illustrated Record. (R 973.76 BRO)
Civil War Roster of Davie County, North Carolina: Biographies of 1,147 Men Before, During and After the Conflict. (R 975.669 HAS)
Colorado Profiles: Men and Women Who Shaped the Centennial State. (R 978.8 MON)
Confederate Reader: How the South Saw the War. (R 973.782 CON)
Confederate Settlements in British Honduras. (R 972.82 SIM)
Confederates Soldiers of Hamilton County, Tennessee: an Alphabetical Listing of the Confederate Soldiers Who Lived at One Time in Hamilton County, Tennessee. (R 976.882 HUG)
Crash Course in Genealogy. (R 929.1 DOW)
Crouching Beast: a United States Army Lieutenant's Account of the Battle for Hamburger Hill, May 1969. (R 959.704 BOC)
Delta Delta Delta Alumnae Directory. (R 378.7 DEL 1995)
Denver Inside and Out. (R 978.883 DEN)
Descendants of John Mitchell of Drumore Township, Lancaster County, Pennsylvania. (R 929.2 MITCHELL Vol. 1-2)
Descendants of Nathan Brown (c1731-1779) of Newberry County, South Carolina, Preble County, Ohio, Coweta County, Georgia, and Warren County, Illinois: a Presbyterian Family. (R 929.2 BROWN)
Family Maps of Clay County, Missouri. (R 977.816 BOY)
Family Maps of Clinton County, Illinois. (R 977.3875 BOY)
Family Maps of Clinton County, Missouri. (R 977.8155 BOY)
Family Maps of Dent County, Missouri. (R 977.886 BOY)
Family Maps of DuPage County, Illinois. (R 977.324 BOY)
Family Maps of Jackson County, Illinois. (R 977.3994 BOY)
Family Maps of Jasper County, Illinois. (R 977.374 BOY)
Family Maps of Jefferson County, Illinois. (R 977.3793 BOY)
Family Maps of Jersey County, Illinois. (R 977.3855 BOY)
Family Maps of Johnson County, Missouri. (R 977.8455 BOY)
Family Maps of Kendall County, Illinois. (R 977.3263 BOY)
Family Maps of Macon County, Missouri. (R 977.827 BOY)
Family Maps of Madison County, Missouri. (R 977.816 BOY)
Family Maps of Marion County, Indiana. (R 977.252 BOY)
Family Maps of Montgomery County, Missouri. (R 977.8382 BOY)
Family Maps of Morgan County, Indiana. (R 977.2513 BOY)
Family Maps of Orange County, Indiana. (R 977.227 BOY)
Family Maps of Owen County, Indiana. (R 977.243 BOY)
Family Maps of Ozark County, Missouri. (R 977.8835 BOY)
Family Maps of Phelps County, Missouri. (R 977.8594 BOY)
Family Maps of Posey County, Indiana. (R 977.234 BOY)
Family Maps of Ripley County, Indiana. (R 977.214 BOY)
Family Maps of Williamson County, Illinois. (R 977.3993 BOY)
Family Maps of Wright County, Missouri. (R 977.8825 BOY)
First Black United States Marines: the Men of Montford Point, 1942-1946. (R 940.545 CUL)
First Louisiana Special Battalion: Wheat's Tigers in the Civil War. (R 974.7463 SCH)
First Vermont Cavalry in the Civil War: a History. (R 973.7443 COL)
Gasconade County, Missouri Records. (R 977.861 CAS)
German Mercenary Expatriates in the United States and Canada. (R 973.342 SMITH C)
Gettysburg 1863: Campaign of Endless Echoes. (R 973.734 WHE)
Gettysburg: the Final Fury. (R 973.734 CAT)

Glimpses of Wythe County [Virginia]. (R 975.5773 KEG Vol. 1-2)
Gospel of Progressivism: Moral Reform and Labor War in Colorado, 1900-1930. (R 978.8 LAU)
Great Coalfield War. (R 331.892 MAC G)
Guilford County, North Carolina Marriage Records, 1771-1868. (R 975.662 ING)
Hawkins County, Tennessee, General Index to Deeds: 1788-1861. (R 976.895 HAW V.1)
Historical and Biographical Sketches of Cloud County Kansas: Source : Cutlers History of Kansas, 1883.
(R 978.125 HIS)
History of Czechs in Cedar Rapids. (R 977.762 HIS Vol. 1-2)
History of Saratoga County, New York: With Illustrations and Biographical Sketches of Some of its Prominent
Men and Pioneers. (R 974.748 SYL)
History of the Gift, Kern, and Royer Families. (R 929.2 GIFT)
History of Washington Co., New York: With Illustrations and Biographical Sketches of Some of its Prominent
Men and Pioneers. (R 974.749 JOH Vol. 1-2 INDEX)
Homesteading the Prairie. (R 978.719 JEW)
Hood's Texas Brigade in the Civil War. (R 973.7464 WIL)
In Black America. (R 973.0496 IN)
Irish Americans in the Confederate Army. (R 973.742 OBR)
Jayhawker. (R 378.781 1952, 1976 & 1979)
John Ransom's Andersonville Diary. (R 973.77 RAN)
Jungle Combat with the 112th Cavalry: Three Texans in the Pacific in World War II. (R 940.5412 WIG)
Kansas State University Yearbook. (R 378.781 KAN 2001)
Keith Book. (R 929.2 KEITH)
Kentucky Lake Reservoir Cemeteries. (R 976.9895 DOU V.1)
Kentucky Memories of Uncle Sam Williams. (R 976.9423 WIL)
Kingman High School, 1937-1986: the Second 50 Classes. (R 373.781 KAN)
Kings and Queens of England. (R 942 CRO)
Kinship Concealed: Amish Mennonite -- African American Family Connections.
(R F CRANFORD SHARON)
La Gente: Hispano History and Life in Colorado. (R 978.8 GEN)
Land Claims in East Florida, 1826: Taken from the 19th Congress First Session, House of Representative
Report Number 503. (R 975.91 LAN)
Land Claims in the Missouri Territory: Records of the 12th Congress, 1812. (R 977.8 LAN)
Lawrence County, Arkansas Biographical and Historical Memoirs. (R 976.725 LAW)
Lee County, Virginia Deed Book Number 1 to 3, 1793-1820. (R 975.5735 DUC Vol. 1-3)
Lost Battalion and the Meuse-Argonne, 1918: America's Deadliest Battle. (R 940.436 CLO)
Lynching in Colorado, 1859-1919. (R 364.134 LEO)
Madison County, Kentucky, Birth Records: 1852-1904. (R 976.953 ING Vol. 1-2)
Marion Co., Mo., Old Settlers Reunions, 1870's-1880's. (R 977.8353 WIL)
Massachusetts Andrew Sharpshooters: a Civil War History and Roster. (R 973.73 ELL)
McKenzie's Fighting Fifth: First Order Book of the 5th Tennessee Cavalry Regiment, Confederate States of
America. (R 973.7468 CAM)
McKenzie's Fighting Fifth: Questionnaires of Veterans of the 5th Tennessee Cavalry Regiment, Confederate
States of America. (R 973.7468 CAM)
Mexico's Indigenous Communities: Their Lands and Histories, 1500-2010. (R 333.2 RUI)
Militia of Montgomery County, Virginia, 1777-1790. (R 975.5785 KEG)
Mulvane [Kansas]. (R 978.186 MAC C)
My Family History Toolbox: an Illustrated Guide to Cutting-edge Technology to Help you Discover your
Family Tree and Story. (R 929.1 LAR)
Names of Taxpayers in Kentucky 1790. (R 976.9 NAM)

WPL New Materials, continued

Nelson County, Kentucky Birth Records, 1852 thru 1859, 1861, 1874 thru 1879, 1903-04-06 & 07.
(R 976.9495 ING)

Nelson County, Kentucky, Death Records: 1852 Thru 1857, 1859, 1861, 1874 thru 1878, 1904, 1907.
(R 976.9495 ING)

Newton [Kansas]. (R 978.185 BIS)

Orange County, North Carolina, Marriage Records, 1782-1868. (R 975.6565 ING)

Parnassus. (R 378.7814 PAR 1969)

Passion of Her Own: Life-path Journeys with Women of Kansas. (R 978.1 PAS)

Pennsylvania Reserves in the Civil War: a Comprehensive History. (R 973.7448 ENT)

Perry County, Missouri Records: Marriage Book A - 1825-1841; Marriage Book B - 1842-1853; Wills and Administrations Book A, 1825-1845; Records of Births, 1866. (R 977.8694 PER)

Pioneer Kentuckians with Missouri Cousins. (R 977.8 BRO Vol. 1 & 2)

Pioneers, Peddlers & Tsadikim: the Story of Jews in Colorado. (R 978.8 UCH)

Rockingham County, North Carolina Marriage Records, 1785-1868. (R 975.663 ING)

Silver Images of Colorado: Denver Album & the 1866 Business Directory. (R 978.883 RON V.1)

Spotlight Yearbook. (R 373.781 SPO 1970, 1971, 1972)

Sons of the Profits: or, There's No Business Like Grow Business: the Seattle Story, 1851-1901.
(R 979.777 SPE)

Sooner or Later: Tales of a Pioneer Family. (R 929.2 STUMBOUGH)

So Proudly We Hail: Ancestors and Descendants of Harold and Elsie Cole (Whipple) Morgan with Information about the Allied Seligman Family. (R 929.2 MORGAN)

Spanish Claims to Land in Florida, 1835. (R 975.9 SPA)

Special Presidential Pardons for Confederate Soldiers: a Listing of Former Confederate Soldiers Requesting Pardon from President Andrew Johnson. (R 973.742 SPE Vol. 1-2)

St. John's Evangelical Lutheran Church, Wythe County, Virginia: Baptismal Records by the Reverend George Daniel Flohr and the Reverend Jacob Scherer, 1804-1836. (R 975.5773 KEG)

Sunflower: Shamrock. (R 378.781 SUN 1959, 1960, 1961, & 1962)

Tales of the Mississippi. (R 977 SAM)

Toughest Man in Montana: Pike Landusky and His Generation: from Missouri Bushwhacker to Montana Legend. (R 978.616 MUR)

Tribal Names of the Americas: Spelling Variants and Alternative Forms, Cross-referenced. (R 929.4 CLA)

United States Army Second Division Northwest of Chateau Thierry in World War I. (R 940.434 THO)

United States Merchant Marine Casualties of World War II. (R 940.545 BRO)

University United Methodist Church, Kansas City, Kansas: Records, 1919-2009: Members, Baptisms, Marriages, Deaths, Ministers. (R 977.8411 ANG)

U.S. Army War College Guide to the Battles of Chancellorsville & Fredericksburg. (R 973.73 UNI)

USMC : a Complete History. (OVERSIZE R 359.96 USM)

Valley Center High School: [yearbook]. (R 373.781 VAL 1973, 1974, 1975)

Wichita Heights High School. (R 378.781 WIC 2011)

Wythe County, Virginia, Marriages, 1790-1853. (R 975.5773 HOC)

Wythe County, Virginia Marriages 1854-1866. (R 975.5773 DIL)

Wythe County, Va. Tax List, 1793-1800. (R 975.5773 MUR)

Wythe County, Virginia, Will Books 1-2, 1790-1822. (R 975.5773 BRO)

Yazoo Land Company: House of Representatives Document 110, 1805. (R 975.8 YAZ)

Zion Church, Wythe County, Virginia: Annotated Baptismal Records, 1791-1835. (R 975.5773 KEG)





MARRIAGE RECORDS



Sedgwick County, KS, Book M

<u>Page</u>	<u>Groom/Bride</u>	<u>Residence</u>	<u>Age</u>	<u>Appl. Date</u>	<u>Marriage Date</u>
M151	Goeldner, Charles W.	Derby, KS	25		
	Cook, Stella E.	Derby, KS	22	22 Feb	24 Feb 1909
M151	Roberts, Richard B.	Reece, KS	26		
	Drain, Bird L.	Reece, KS	27	22 Feb	22 Feb 1909
M152	Delivuk, Charley	Wichita, KS	35		
	Lasota, Amalia	Wichita, KS	26	23 Feb	23 Feb 1909
M152	Smith, James A.	Norwich, KS	25		
	Godfrey, Lottie	Jonesville, MI	23	22 Feb	22 Feb 1909
M153	Grosz, Edgar V.	Emporia, KS	25		
	Wirges, Anna G.	Wichita, KS	24	23 Feb	23 Feb 1909
M153	Philips(Ilips), Roy W.	Wichita, KS	23		
	Black, Martha May	Valley Center, KS	19	23 Feb	24 Feb 1909
M154	Hamm, Charles	Wichita, KS	33		
	Ross, Iola	Wichita, KS	26	23 Feb	24 Feb 1909
M154	Peterson, Olf	Wichita, KS	32		
	Martin, Lennie	Rich Hill, MO	29	23 Feb	10 Mar 1909
M155	Robbins, Frank A.	Wichita, KS	27		
	Berry, Sadie	Wichita, KS	21	23 Feb	24 Feb 1909
M155	Shaffer, Edward Emanuel				
	Wilkis	Wichita, KS	33		
	Feltner, Lettie Ann (Mrs.)	Wichita, KS	34	23 Feb	23 Feb 1909
M156	Hess, Larnie A.	Caldwell, KS	26		
	Irwin, Ada B.	Wichita, KS	19	24 Feb	24 Feb 1909
M156	Hoss, H.E.	Potwin, KS	25		
	Long, Esther Maria	Whitewater, KS	19	24 Feb	24 Feb 1909
M157	Cousins, Frank A.	Douglass, KS	25		
	Stice, Iva	Douglass, KS	20	24 Feb	24 Feb 1909
M157	Kennick, Joseph	Wichita, KS	60		
	Beuker, Emilie	St. Louis, MO	45	24 Feb	24 Feb 1909
M158	Rhea, Orvie(ia)	Wellington, KS	24		
	Cooper, Margret(gart)	Wichita, KS	24	24 Feb	24 Feb 1909
M158	Weinheimer, E.H.	Harper, KS	22		
	McClung, Nellie	Harper, KS	20	25 Feb	25 Feb 1909
M159	Abele, Benjamin C.	Wichita, KS	19		
	Yeager, Mary E.	Wichita, KS	18	25 Feb	28 Feb 1909
M159	Connelly, C.M.	Enid, OK	46		
	Barrett, Dora L.	Enid, OK	38	25 Feb	25 Feb 1909
M160	Derbeque, J.A.	Caney, KS	19		
	Frewert, Irene	Caney, KS	18	26 Feb	26 Feb 1909
M160	Van De Water, George H.	Winfield, KS	39		
	Cann, Cora	Winfield, KS	34	27 Feb	28 Feb 1909
M161	Lavers, E.G.	Denver, CO	27		
	Follett, Katherine J.	Wichita, KS	23	27 Feb	27 Feb 1909
M161	Wills, A.E.	Wichita, KS	30		
	Gilbert, Mary E.	Wichita, KS	30	27 Feb	28 Feb 1909
M162	Lashly(ley), Richard	Wichita, KS	22		
	Woltz, Myrtel(tle)	Wichita, KS	20	01 Mar	01 Mar 1909

Marriage Records, continued

<u>Page</u>	<u>Groom/Bride</u>	<u>Residence</u>	<u>Age</u>	<u>Appl. Date</u>	<u>Marriage Date</u>
M162	McCoy, Loyd	Woodward, OK	27		
	Wise, Cora	Woodward, OK	19	01 Mar	01 Mar 1909
M163	Litsey, Floyd R.	Wichita, KS	20		
	McKee, Aimee	Wichita, KS	19	01 Mar	01 Mar 1909
M163	Wood, Peter Cooper	Kingman, KS	30		
	Palmer, Mahala	Kingman, KS	18	01 Mar	01 Mar 1909
M164	Staley, Charles W.	Wellington, KS	32		
	Munson, Almira	Wellington, KS	40	02 Mar	02 Mar 1909
M164	Wright, Frank G.	Augusta, KS	19		
	Rutherford, Ava E.	Augusta, KS	17	03 Mar	03 Mar 1909
M165	Meek, Percy H.	Elk City, OK	21		
	Sinclair, Lida	Wichita, KS	20	03 Mar	03 Mar 1909
M165	Zimmerman, M.	Wellington, KS	56		
	Wicham, Anna	Wellington, KS	49	03 Mar	03 Mar 1909
M166	Ballard, Wesley L.	Wichita, KS	21		
	Malone, Bessie J.	Wichita, KS	17	03 Mar	03 Mar 1909
M166	Burr, Hiram T.	Dodge City, KS	29		
	Meers, Olive G.	Coldwater, KS	24	03 Mar	03 Mar 1909
M167	Dowell, Clarence	Conway Spgs, KS	24		
	Carpenter, Gertrude	Conway Spgs, KS	21	03 Mar	03 Mar 1909
M167	Woodall, Allie	Conway Spgs, KS	23		
	Burnett, Frances	Conway Spgs, KS	22	03 Mar	03 Mar 1909
M168	Dwyer, Johnie	Garden Plain, KS	24		
	Kraus, Regina	Garden Plain, KS	20	03 Mar	03 Mar 1909
M168	Wilson, Elmer	Bentley, KS	21		
	Crawford, Volina	Sedgwick, KS	22	03 Mar	04 Mar 1909
M169	Combs, Sherman Leslie	Hutchinson, KS	21		
	Chapman, Katherine Belle	Hutchinson, KS	19	05 Mar	05 Mar 1909
M169	Releford, Jessie Lee	Mt. Hope, KS	18		
	Phenneger, Ellen	Benton, KS	18	03 Mar	03 Mar 1909
M170	Clark, Russell Herbert	Oakwood, OK	24		
	Layton, Eliza May	Augusta, KS	20	06 Mar	06 Mar 1909
M170	Walter, Charles M.	Wichita, KS	40		
	Francis, Lota	Valley Center, KS	25	06 Mar	06 Mar 1909
M171	Hibbard, P.J.	Wichita, KS	21		
	Green, Violet	Wichita, KS	18	06 Mar	07 Mar 1909
M171	Walker, Albert	Wichita, KS	28		
	Crawford, Anna	Wichita, KS	30	06 Mar	06 Mar 1909
M172	Dutcher, Bela C.	Kansas City, MO	30		
	Burke(ucke), Mabel A.	Oklahoma City, OK	29	08 Mar	09 Mar 1909
M172	Kitchin, Edward	Wichita, KS	23		
	Cox, Ethel	Wichita, KS	21	07 Mar	07 Mar 1909
M173	Cunningham, Edward	Wichita, KS	22		
	Taylor, Mattie	Wichita, KS	17	08 Mar	08 Mar 1909
M173	Porter, J. William	Wichita, KS	37		
	Turner, Irene	Wichita, KS	40	08 Mar	08 Mar 1909
M174	Jessup, William Herbert	Wichita, KS	18		
	Newton, Iva Belle	Wichita, KS	20	08 Mar	10 Mar 1909
M174	Vermillion, Ruben	Viola, KS	22		
	Hawley, Bessie May	Viola, KS	19	08 Mar	10 Mar 1909
M175	Cook, E.H.	Wichita, KS	32		
	Wheeler, Lillie	Wichita, KS	29	09 Mar	09 Mar 1909

Marriage Records, continued

<u>Page</u>	<u>Groom/Bride</u>	<u>Residence</u>	<u>Age</u>	<u>Appl. Date</u>	<u>Marriage Date</u>
M175	Ruckle, George M.	Greenwich, KS	27		
	Gillenwater, Ora	Wichita, KS	20	09 Mar	10 Mar 1909
M176	Alumbaugh, Harry H.	Newton, KS	21		
	Utz, Eva	Newton, KS	21	10 Mar	11 Mar 1909
M176	Beshears, Benjamin W.	Dighton, KS	26		
	Johnston, Ethel	Wichita, KS	25	10 Mar	10 Mar 1909
M177	Callahan, Harry C.	Texico, NM	21		
	Duncan, Ethel	Wichita, KS	20	10 Mar	10 Mar 1909
M177	McNeal, George L.	Wichita, KS	44		
	Findeiss, Carrie Schweiter	Wichita, KS	25	10 Mar	10 Mar 1909
M178	Nystrom, George Henry	Moline, IL	25		
	Salmons, Grace Maude	Kingman, KS	25	13 Mar	14 Mar 1909
M178	Purvis, Arthur	Wichita, KS	26		
	McAllister, Emma	Wichita, KS	20	13 Mar	13 Mar 1909
M179	Houser(owser), Raymond D.	Wichita, KS	21		
	Shoemaker, Zaida	Arkansas City, KS	19	13 Mar	14 Mar 1909
M179	Pile, George	Mt. Hope, KS	21		
	Stamback, Ellen	Mt. Hope, KS	21	13 Mar	14 Mar 1909
M180	Ross, Chris	Wichita, KS	21		
	Chouteau, Belle	Wichita, KS	19	13 Mar	13 Mar 1909
M180	Senter, Clay Randolph	Clearwater, KS	24		
	Likely, Bessie Mae	Clearwater, KS	24	15 Mar	17 Mar 1909
M181	House, Eli	Marion, KS	28		
	Nesbitt, Nellie L.	Kansas City, MO	30	15 Mar	15 Mar 1909
M181	Kane, John Fletcher	Wichita, KS	23		
	Adamson, Grace	Sedgwick, KS	20	16 Mar	16 Mar 1909
M182	Fausnacht, Clinton	Amarillo, TX	28		
	Newbanks, Naomi	Harper, KS	26	16 Mar	16 Mar 1909
M182	Waldorf, Charles	El Dorado, KS	26		
	Elson, Edna	El Dorado, KS	19	16 Mar	16 Mar 1909
M183	Hayden, Alfred R.	Wichita, KS	27		
	Wemple, Cora D. (E.)	Wichita, KS	26	17 Mar	17 Mar 1909
M183	Whiteside, Ray	Wichita, KS	19		
	Nocks, Grace	Wichita, KS	17	16 Mar	07 Apr 1909
M184	Smith, Frank B.	Arkansas City, KS	21		
	Barton, Blanche I.	Arkansas City, KS	21	18 Mar	18 Mar 1909
M184	Truman, James W.	Wichita, KS	23		
	Carter, Belle	Wichita, KS	20	17 Mar	17 Mar 1909
M185	Barnhisel, Edward Stewart	Wellington, KS	45		
	Wells, Lillian	Wellington, KS	27	18 Mar	18 Mar 1909
M185	Stelph, Charles W.	Wichita, KS	38		
	Young, Blanche L.	Wichita, KS	28	18 Mar	18 Mar 1909
M186	Breneman, Edward W.	Wichita, KS	28		
	Christy, Emma	Wichita, KS	25	20 Mar	20 Mar 1909
M186	Crandall, Watson D.	Wichita, KS	21		
	Hill, Jennie Pearl	Wichita, KS	21	20 Mar	20 Mar 1909
M187	Armke, George E.	Wichita, KS	36		
	Zaro, Edna	Anthony, KS	35	22 Mar	23 Mar 1909
M187	Busenbark, T.B.	Wichita, KS	25		
	Bunton, E.M.	Wichita, KS	24	20 Mar	24 Mar 1909
M188	Richards, R.H.	Wichita, KS	22		
	Merchant, Mildred	Newton, KS	20	22 Mar	22 Mar 1909

Marriage Records, continued

<u>Page</u>	<u>Groom/Bride</u>	<u>Residence</u>	<u>Age</u>	<u>Appl. Date</u>	<u>Marriage Date</u>
M188	Riggs, Hubert R.	Amarillo, TX	27		
	Magruder, Anna M.	Wichita, KS	26	23 Mar	24 Mar 1909
M189	Leggett, James William	Bayneville, KS	27		
	Gise, Hazel	Bayneville, KS	16	23 Mar	23 Mar 1909
M189	Sullivan, George	Wichita, KS	24		
	Haskins, Alice (Mrs.)	Wichita, KS	46	23 Mar	23 Mar 1909
M190	McVicker, Francis W.	Wichita, KS	19		
	Taylor, Mona F.	Wichita, KS	18	23 Mar	23 Mar 1909
M190	Snyder, Roscoe J.	Oklahoma City, OK	24		
	Malm, Sophia Marie	Manhattan, KS	23	24 Mar	24 Mar 1909
M191	Johnson, Samuel R.	Wichita, KS	29		
	Chapman, Effie	Wichita, KS	22	24 Mar	24 Mar 1909
M191	Read, Louie E.	Winfield, KS	19		
	Buss, Katheryne	Winfield, KS	18	24 Mar	24 Mar 1909
M192	Barringer, W. Milton	Wichita, KS	27		
	Nield, Berdie F.	Wichita, KS	18	25 Mar	25 Mar 1909
M192	Herring, William H.	Wichita, KS	28		
	Rogers, Alice D.	Wichita, KS	18	25 Mar	25 Mar 1909
M193	Cox, Virgil (Vergil) E.	Rose Hill, KS	24		
	Fesmire, Blanche	Rose Hill, KS	23	26 Mar	31 Mar 1909
M193	Neises, Joseph	Andale, KS	24		
	Kerschen, Catharine	Goddard, KS	22	26 Mar	20 Apr 1909
M194	Lewis, Charles L.	El Dorado, KS	27		
	Mayne, Georgia	El Dorado, KS	27	27 Mar	27 Mar 1909
M194	Rummage, Charles E.	Wichita, KS	24		
	Dunlap, Mattie	Wichita, KS	21	27 Mar	27 Mar 1909
M195	Blue, Edward P.	Oatville, KS	25		
	Clark, Mabel	Wichita, KS	22	29 Mar	31 Mar 1909
M195	Craig, A.V.	Wichita, KS	25		
	Gilstrap, Blanche	Arkansas City, KS	18	29 Mar	29 Mar 1909
M196	Claggett, Eugene C.	Wichita, KS	37		
	Hills, Grace M.	Wichita, KS	25	31 Mar	31 Mar 1909
M196	Lawson, Richard	Peck, KS	25		
	Teachout, Julia	Peck, KS	28	30 Mar	31 Mar 1909
M197	Fisk, J.R.	Renfrow, OK	68		
	Morton, E.M.	Wichita, KS	43	31 Mar	31 Mar 1909
M197	Utt, Henry Earl	Derby, KS	24		
	Brady(ddy), Iva	Derby, KS	21	31 Mar	31 Mar 1909
M198	Kerns, R.H.	Wichita, KS	27		
	Carlton, Fannie	Fresno, CA	27	31 Mar	03 Apr 1909
M198	Pullen, Harvey	Wichita, KS	23		
	Austin, Arlis	Wichita, KS	16	31 Mar	24 Apr 1909
M199	Painter, Hubert Arthur	Wichita, KS	23		
	Stillwell, Sadie Ellen	Wichita, KS	19	31 Mar	31 Mar 1909
M199	Williams, Charles E.	Wichita, KS	35		
	Dumont, Zella	Wichita, KS	34	31 Mar	31 Mar 1909
M200	Dilley, Frank J.	Wichita, KS	30		
	Humphrey, Clarice M.	Arcadia, KS	30	01 Apr	01 Apr 1909
M200	Schmitt, Henry	Wichita, KS	22		
	Billings, Clara	Burrton, KS	24	01 Apr	01 Apr 1909



WICHITA HISTORICAL PANEL NO. 86

Moths Cost Pioneer Trader \$1,500 in Damage to Hides

J. R. Mead Found Smoking and Beating Hides No
Help; Indians Gave Help



(Wichita Historical Panel No. 86)

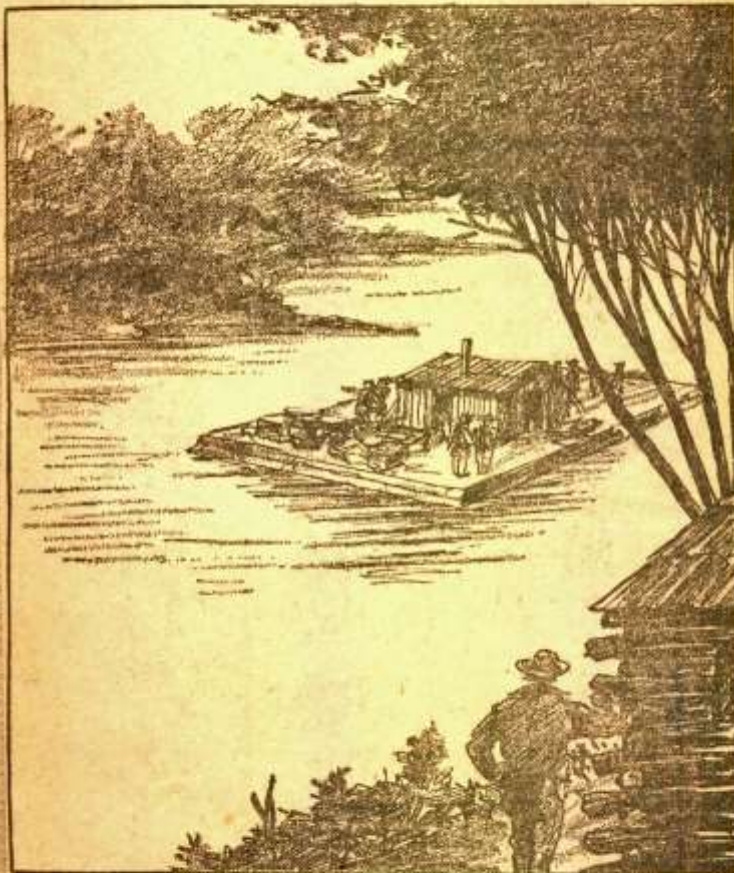
THE COMBINATION OF moths and flood waters in the Big Arkansas river cost J. R. Mead, Indian trader and city builder, \$1,500 here during the summer of 1865. Mead had purchased 1,500 buffalo hides from the Indians encamped at Cottonwood grove. During June and July the Arkansas river was up and could only be crossed by swimming on horseback. Soon moths commenced eating the hides. Mead's men beat the hides and smoked them, but the moths stayed. After weeks of waiting 35 Kaw Indians passed by and Mead explained his trouble. They solved it by building log rafts, placing the hides on them, and then one or two Indians would swim ahead with a rope attached to the raft to a standing place and pull while others swam and pushed. They got the hides across with the loss of a few hides. But, at the eastern market Mead was "docked" a dollar a hide because they had been damaged to some extent by the moths.

Reprinted by permission of The Wichita Eagle

WICHITA HISTORICAL PANEL NO. 87

There Was Boat Traffic on River Here in Early Years

Rocky Mountain Trappers Loaded Furs on Boats at
Pueblo and Floated It Down Arkansas



(Wichita Historical Panel No. 87)

FIRST TRAFFIC ARTERY for Sedgwick county before the settlement of Wichita was the Arkansas river. As early as 1852, according to James R. Mead and William Mathewson, boats were floated down the Arkansas from Pueblo, Colo. These boats were large enough to accommodate from 15 to 20 men and their packs and furs. The occupants were Rocky mountain traders and trappers. At that time, and until about 1880, the river was from 800 to 1,200 feet wide, the banks heavily fringed with timber. Then from 1870 to 1880 boats were built in Wichita and used to travel up and down the river except for from one to two months in the fall of the year when the stream was low.

Reprinted by permission of The Wichita Eagle

18TH JUDICIAL DISTRICT PROBATE INDEX

Explanation of Column Headings	
Case	Number assigned to case
Name	Names of major parties involved; guardianships list each individual separately
Date	Earliest date found in file, not necessarily date case was originally filed
Type	D = Death G = Guardianship M = Miscellaneous, further described in Comments column
Pages	Approximate number of pages in case; if 10 or fewer receipts/canceled checks, included in page count, otherwise shown separately in Comments column
Comments	Any other type of pertinent information not appearing in other columns

Case	Name	Date	Type	Pgs	Comments
	Cornwell, William				
5421	Loyd	18-Sep-1912	G	9	Also Wright, Ray Esa
5421	Wright, Ray Esa	18-Sep-1912	G		See Cornwell, William Loyd
5422	Butler, J.H.	19-Sep-1912	D	52	Plus 106 receipts
5423	Thomas, John D.	19-Sep-1912	D	18	
5424	Harmon, George	20-Sep-1912	D	21	
5425	Sonderup, Susan B.	23-Sep-1912	G	32	
	Bowers, Andrew				
5447	Jackson	27-Sep-1912	D	18	
5448	Nutt, William A.	4-Dec-1911	D	16	
5449	Irish, Grover L.	26-Feb-1912	D	14	
5451	Wilson, Verne C.	4-Oct-1912	G	50	
5452	Diefenbach, Joseph	7-Oct-1912	D	46	Plus 51 receipts
5453	Harrison, William	7-Oct-1912	D	13	
	Lewis, William				
5454	Henry	7-Oct-1912	D	22	
5455	Peck, Ann	8-Oct-1912	D	31	
5456	Steele, J.K.	16-Oct-1912	D	49	Plus 35 receipts
5458	Daugherty, John E.	19-Oct-1912	D	11	Plus 35 receipts
	Empire Rubber & Tire vs Campbell				
5459	Transfer	12-Mar-1920	M	6	Aid in Execution
5460	Young, Rhaeta	22-Oct-1912	G	19	
5461	Reed, Hazel Starr	22-Oct-1912	G		See Reed, Olive Fay
5461	Reed, Olive Fay	22-Oct-1912	G	54	Also Reed, Hazel Starr
5462	Jansen, Mary	22-Oct-1912	D	22	
5463	Jones, Jennie	25-Oct-1912	D	23	
5464	Stebbins, Rachel M.	25-Oct-1912	D	25	
5465	Altman, Adolphie	26-Oct-1912	G	11	
5466	Kerr, Virginia	29-Oct-1912	D	12	
5467	Luce, Albert W.	31-Oct-1912	D	42	Plus 17 receipts

Probate Index, continued

Case	Name	Date	Type	Pgs	Comments
5468	Amey, Harriet Lea	31-Oct-1912	G		See Amey, Harry W.
5468	Amey, Harry W.	31-Oct-1912	G	84	Also Amey, Harriet Lea
5469	Ludlum, J.T.	1-Nov-1912	D	16	
5470	Gehring, Jessie M.	4-Nov-1912	D	16	
5471	Gehring, Fredericka Barbara	11-Nov-1912	D	31	
5472	Gillespie, A.J.	4-Nov-1912	D	20	
5474	Duncan, David D.	6-Nov-1912	D	60	
5475	Washburn, Elvin	6-Nov-1912	G	40	Also Washburn, Harold
5475	Washburn, Harold	6-Nov-1912	G		See Washburn, Elvin
5476	Trimble, Leonard	8-Nov-1912	D	25	
5477	Miller, Mary E.	24-Oct-1912	D	9	
5478	McFie, William	12-Nov-1912	D	4	
5479	Davidson, Samuel E.	18-Nov-1912	D	40	
5480	Crouch, Jessie	21-Nov-1912	D	11	
5481	Squire, Elmon D.	21-Nov-1912	D	45	
5482	Thompson, William A.	2-Dec-1912	D	67	Plus 24 receipts
5483	Fookes, James H.	2-Dec-1912	D	22	
5484	Means, Mary	3-Dec-1912	D	13	
5485	Brittenfield, Louis	7-Dec-1912	D	40	
5486	Heinricks, Michael	7-Dec-1912	D	42	
5487	Hitchcock, Marvel C.	2-Dec-1912	G	22	
5488	Patton, Joseph A.	13-Dec-1912	D	52	
5489	Kyle, Claud	7-Dec-1912	G		See Kyle, Dorothy
5489	Kyle, Dorothy	7-Dec-1912	G	5	Also Kyle, Claud
5490	Ogden, R.L.	14-Dec-1912	D	22	
5491	Dunn, Jehiat A.	14-Dec-1912	D	49	Plus 12 receipts
5492	Adams, Benjamin Franklin Holmes	18-Dec-1912	D	14	
5493	Williamson, W.H.	19-Dec-1912	D	39	Plus 22 receipts
5494	Fox, Charles K.	12-Dec-1912	D	25	
5495	Mahaney, Timothy D.	30-Apr-1913	D	10	Plus 127 receipts
5517	Basore, C.C.	28-Dec-1912	D	19	Plus 39 receipts
5518	Wise, William	24-Dec-1912	D	105	Plus 117 receipts
5519	Bruner, Earnest	30-Dec-1912	G		See Bruner, William
5519	Bruner, Gladys	30-Dec-1912	G		See Bruner, William
5519	Bruner, Linnie	30-Dec-1912	G		See Bruner, William
5519	Bruner, William	30-Dec-1912	G	69	Also Bruner: Linnie, Gladys, Earnest
5520	Peltzer, Joseph	4-Jan-1913	D	40	
5522	Tibbals, Walter B.	7-Jan-1913	D	6	
5523	Kelly, Naomi L.	9-Jan-1913	G	7	
5524	O'Donnell, Maurice	9-Jan-1913	D	28	Plus 34 receipts
5525	Stafford, Eliza A.	9-Jan-1913	D	22	

Case	Name	Date	Type	Pgs	Comments
5526	Gleeson, Michael	10-Jan-1913	D	45	Plus 36 receipts
5527	Rice, Maria E.	11-Jan-1913	D	20	
5528	Ballantine, James	13-Jan-1913	D	8	
5529	Hass, James A.	14-Jan-1913	D	6	
5530	Ford, H.L.	15-Jan-1913	D	10	
5531	Walker, John R.	19-Jan-1913	D	39	Plus 44 receipts
5532	Bixby, Mary E.	15-Jan-1913	D	16	
5533	Pingel, Christian	16-Jan-1913	D	85	Plus 80 receipts
5536	Drake, Minnie A.	15-Jan-1913	D	24	
5537	Pond, Walter M.	22-Jan-1913	D	29	
5538	Hamilton, Robert	24-Jan-1913	D	11	
5539	McGlynn, Bernard	25-Jan-1913	D	82	
5540	Gannaway, Joseph Bennett	25-Jan-1913	G		See Gannaway, Owen Dewey
5540	Gannaway, Kenneth Earl	25-Jan-1913	G		See Gannaway, Owen Dewey
5540	Gannaway, Owen Dewey	25-Jan-1913	G	24	Also Gannaway: Kenneth Earl, Joseph Bennett
5541	Bastow, Margaret M.	27-Jan-1913	G	48	Also Bastow: Cashious W., Austin L. - Plus 45 receipts
5542	Seger, Frank R.	27-Jan-1913	G	10	
5543	Main, Benjamin Franklin	28-Jan-1913	D	18	
5544	Winchell, Ira	28-Jan-1913	G	11	Also Winchell: Paul, Pitt
5545	Foerst, Fred	28-Jan-1913	D	16	
5546	Bonham, Miriam	31-Jan-1913	D	14	
5547	Sommers, Alexander	3-Feb-1913	D	8	
5549	Kirkpatrick, Lizzie M.	6-Feb-1913	D	24	
5550	Brown, Clarence	6-Feb-1913	G		See Brown, Naomi
5550	Brown, Marlow	6-Feb-1913	G		See Brown, Naomi
5550	Brown, Naomi	6-Feb-1913	G	13	Also Brown: Leland S., Clarence, Marlow
5551	Hicks, Belinda Jane	10-Feb-1913	D	28	
5552	McDaniel, Lessie	11-Feb-1913	G	7	
5553	Green, D.L.	13-Feb-1913	D	19	
5555	Rodolf, Roland O.	13-Feb-1913	D	64	Plus 21 receipts
5556	Saunders, Edward Alonzo	14-Feb-1913	D	48	Plus 46 receipts
5557	Harper, Susan	14-Feb-1913	D	12	
5558	Leichhardt, Albert	15-Feb-1913	D	19	
5559	Underwood, Henry	18-Feb-1913	D	18	Plus 24 receipts
5560	Fletcher, J.W.	20-Feb-1913	D	17	Plus 265 receipts
5562	Weidman, Dorothy M.	17-Feb-1913	G		See Weidman, Ella Also Weidman: Fred D., Frank, Dorothy M.
5562	Weidman, Ella	17-Feb-1913	G	79	
5562	Weidman, Frank	17-Feb-1913	G		See Weidman, Ella

Probate Index, continued

Case	Name	Date	Type	Pgs	Comments
5562	Weidman, Fred D.	17-Feb-1913	G		See Weidman, Ella
5563	Reibel, Edward Jr.	24-Feb-1913	G	28	
5564	Steele, George T.	24-Feb-1913	D	17	
5565	Truex, C.S.	25-Feb-1913	D	23	
5566	Sherar, Aubrey A.	26-Feb-1913	G		See Sherar, Harley T.
5566	Sherar, Harley T.	26-Feb-1913	G	7	Also Sherar: R. Leo, Aubrey A., Vera Belle, Merle B., R.B. Jr.
5566	Sherar, Merle B.	26-Feb-1913	G		See Sherar, Harley T.
5566	Sherar, R. Leo	26-Feb-1913	G		See Sherar, Harley T.
5566	Sherar, R.B. Jr.	26-Feb-1913	G		See Sherar, Harley T.
5566	Sherar, Vera Belle	26-Feb-1913	G		See Sherar, Harley T.
5567	Damon, Luther E.	11-Jun-1903	D	53	
5569	Leis, Andrew	1-Mar-1913	G	27	Also Leis: Frank, George
5569	Leis, Frank	1-Mar-1913	G		See Leis, Andrew
5569	Leis, George	1-Mar-1913	G		See Leis, Andrew
5570	Jackson, J.R.	5-Mar-1913	D	36	Plus 87 receipts
5571	Fadley, D.D.	10-Mar-1913	D	29	
5572	Shellenberger, Floyd	10-Feb-1913	G	23	
5574	Shafer, William W.	17-Mar-1913	D	15	
5575	Cooley, Caroline	17-Mar-1913	D	46	Plus 43 receipts
5576	Hutchinson, Alexander	18-Mar-1913	D	35	Plus 14 receipts
5577	Mahlandt, A.W.	18-Mar-1913	D	23	Plus 16 receipts
5578	Funk, H.C.	20-Mar-1913	D	7	
5579	Lauterbach, Delia	20-Mar-1913	G	80	Also Lauterbach, Lewis - Plus 22 receipts
5579	Lauterbach, Lewis	20-Mar-1913	G		See Lauterbach, Delia
5580	Kelly, Rachel V.	21-Mar-1913	D	10	
5581	Wampler, Ellis M.	25-Mar-1913	G	45	
5582	Ruff, Joseph	29-Mar-1913	D	27	Plus 19 receipts
5583	Clark, Lucius E.	1-Apr-1913	D	15	
5584	Caldwell, John W.	7-Apr-1913	G	18	
5585	Wilson, May	3-Apr-1913	G	10	
5586	Patterson, William	5-Apr-1913	G	22	Plus 16 receipts
5587	Russell, Elijah	5-Apr-1913	D	20	
5610	Shores, Bertha	21-May-1913	G		See Shores, Dollie
5610	Shores, Dollie	21-May-1913	G	77	Also Shores, Bertha - Plus 53 receipts
5611	Farmer, Charles Richard	12-Apr-1913	G	13	
5612	Olden, Lucinda	14-Apr-1913	D	16	

**Copies of probate files may be purchased from MHGS by regular mail
(MHGS, Attention: Probate File Assistant, PO Box 1121, Wichita, KS, 67201-1121),
by phone (316-264-3611) when the library is open,
or by email (info@mhgswichita.org)**

NEW MATERIALS IN THE MHGS LIBRARY

Compiled by Julia Langel

Accession No.	Author	Title
G-H 142	Huddle, W. D.	History of the descendants of John Hottel :
G-I 05	Gilreath, Amelia Cleland	"Oh Shenandoah I love your Daughter"
G-R 061	Burruss, Daniel Warrick	The Rinkers of Virginia :
R-060 125	Sherrill, William L.	Annals of Lincoln County, North Carolina :
R-060 126	Hehir, Donald M.	Carolina families :
R-210 JO 02 Index	Kirk, Carrie M.	Every Name Index of the Johnson County, Kansas, Cemetery Index
R-210 JO 07		Johnson County, Kansas Marriage Records 1857 - 1905
R-210 SU 35	Cook, Rod	Caldwell Stuff: A Collection of Articles and Research Notes Outlining Many Little-Known Facets of Caldwell's Cowtown History 1879 - 1885
R-410 320		History of Lycoming County, Pennsylvania :
R-470 270	Kerns, Wilmer L.	Historical records of old Frederick and Hampshire counties, Virginia
R-470 343 V 3	Vann, Marvin J.	Shenandoah County, Virginia :
R-470 343 V 4	Vann, Marvin J.	Shenandoah County, Virginia :
R-470 343 V1	Vann, Marvin J.	Shenandoah County, Virginia :
R-470 344		Shenandoah County, Virginia Marriage Bonds 1772 to 1853
R-480 081	Horton, Vicki Bidinger	Hampshire County Death Records (1866 - 1922)
R-480 082 V 1	Pugh, Maud	Capon Valley, its pioneers and their descendants, 1698 to 1940.
R-480 082 V 2	Pugh, Maud	Capon Valley, its pioneers and their descendants, 1698 to 1940.
R-480 083 V 1	Miller, Thomas Condit	West Virginia and its people,
R-480 083 V 2	Miller, Thomas Condit	West Virginia and its people,
R-480 083 V 3	Miller, Thomas Condit	West Virginia and its people,
R-630 117	Lantz, Raymond C.	The Potawatomi Indians of Michigan, 1843-1904
R-650 84	Cobb, Sanford H.	The Story of the Palatines
R-670 237 V 1	Hughes, Mark	Confederate cemeteries /
R-670 238 V 2	Wardell, Patrick G.	Virginia/West Virginia genealogical data from Revolutionary War pension and bounty land warrant records



The Wichita Weekly Eagle

Friday, 10 October 1872, page 3

Column 1

CITY AND COUNTY NEWS.

W. J. Hobson and family returned home Tuesday evening.

The palatial residence of Wm. Grieffenstein will be enclosed this week.

Our politicians and office seekers are gradually warming up to their work.

See the report of the proceedings of the county commissioners in another column.

The county officers are to be moved to the rooms over the Savings Bank, in the Eagle block.

Don't fail to go to the Methodist sociable tonight, to be held at the residence of G. H. Smith.

Rev. J. P. Harsen, pastor of the Presbyterian church, starts in a short time to New York for his family.

We have been honored with calls from Hon. T. H. Walker, Samuel Riggs, Mr. Barker and Major Shanklin.

One hundred deeds, mortgages and receipts were recorded this week on the books of the county recorder.

Cary Davis¹, the popular clerk, has resumed his former position of night clerk at the Douglas Avenue House.

The business of the United State land office was not so great last month by several thousand dollars as the month before.

Messrs. Steele, Kirkpatrick, Balderston and Dyer went to Winfield to attend the judicial convention which met yesterday.

The council, at their meeting on Saturday night, declared a certain house near the bridge a nuisance and ordered its abatement.

The lumber dealers of Wichita have agreed upon a scale of prices which will be hung up in the office of each for the inspection of all.

J. L. Goodrick, of Jacksonville, Illinois, has been spending several days in our city, looking after his city property and landed interests.

The river is lower than at any time since the middle of June. Many empty wagons and horsemen are now fording below the bridge.

The foundation for the new Catholic church is completed. The building will be 36x62, and is located north of the depot, near the school house.

One hundred and twenty wagons on Douglas avenue and Main street one day this week, and it was not considered a good ay for wagons either.

The Methodists will hold services regularly every Sabbath morning and evening at the school house. Sunday school in the afternoon at three o'clock.

The Varieties theatre, which has maintained quite a successful run during the summer, is closed, the footlights out, the actors woodbined and the proprietor insolvent.

W. C. Woodman and Col. W. S. Jenkins are off for the St. Louis fair this week. Mr. Jenkins' family will return with him and become permanent residents of the place.

Another addition is being built to the engine house near the depot. When finished it will be the largest on the road outside of Topeka, and will hold five or six engines.

Next Sabbath, and until further notice, the Presbyterian church will hold services in the Eagle Hall. Preaching at 11 .am. and half-past 7 p.m. Sabbath school at 3 p.m.

Z. Smith Brown has moved a building to a lot on Douglas avenue, opposite his old stand, and is building an addition to it, which, when finished, will make a good business room.

The effect of making Wichita the terminus of the first division is no slight thing. Many of the hands, engineers, conductors and other railroad men will make this their headquarters.

Wm. Grieffenstein's horse Prince carried away the first premium at the Butler county fair held at Towanda, last week. Lambdin, of Eldorado, got away with the second premium.

The liberal republican-democratic meeting was held according to previous announcement, in Eagle

¹ Car(e)y D. Davis, born November 1849 in Ohio, died 4 May 1916 and is buried in Maple Grove Cemetery. He married May Baynum on 20 August 1874 in Sedgwick County; on 2 October 1883 he married Mary E. Devore. Mary was born in October 1859 in Ohio, died 21 May 1934 and is also buried in Maple Grove Cemetery.

Hall, on last Tuesday night, and was addressed by Hon. T. H. Walker, Samuel Riggs, and others.

Our efficient city marshal, with his usual promptness and unflinching bravery, on last Tuesday quelled a disturbance which was fast assuming dangerous proportions by promptly arresting and lodging the leaders in the calaboose.

Upon another page will be found the premium list of the National Horse Exhibition which will be held at Winfield. We expect some of our fine nags will be on hand. By another year Sedgwick county will get up a fair, we hope.

A. J. Cook, the flour and seed store man, is still receiving choice varieties of seed wheat which he offers at reasonable prices, and his flour, our cook says, can't be beat. Cook's store is on Main street, one door south of W. A. Thomas & Co.'s.

A. A. Lamb, one of the former proprietors of the Empire House, but now an honest farmer near Sedgwick City, was in town last Saturday, shaking hands with the boys and looking as though the cultivation of the soil in no way disagreed with him.

The Arkansas City *Traveler* has change proprietorship, and management, partially. Mr. L. B. Kellogg disposes of his interest to C. M. Scott, his partner. Mr. Scott is a practical man and a good writer, and will make the *Traveler* a first rate local paper.

The fire apparatus ordered through J. G. Hope, by the city council, has been received. The wagon, with its ladders, hooks, gong, etc., looks like business. We hope that there may never be any occasion to use it, but of the wisdom of the outlay there is not the least doubt.

The M. E. Church furnishing society will meet at the residence of G. H. Smith, on Market street, between Third street and Central avenue, just east of the Empire House, on this (Thursday) evening. Refreshments will be served as usual. All are cordially invited to attend.

The result of the election in the second ward last Saturday, for a councilman to fill vacancy, was as follows: C. A. Bailey, 56; W. B. Hutchison, 31; C. G. Thompson, 10. The result being in favor of Mr. Bailey, who is a good man, and no doubt will attend faithfully to the interests of the second ward.

The largest average lot of Texas steers shipped this season were shipped by A. D. Pierce - Shanghai - on last Sunday week. There were 650 head that averaged within two pounds of 1,300 each. They

were bought by a Mr. Nichols of Bloomington, Illinois, to which point they were shipped for stall feeding.

The enterprising house of Hobbs & Pittenger is constantly receiving large supplies of choice family groceries, which they are selling at living prices. They have also in connection with the grocery establishment a large invoice of queensware, which they make one of their specialties. Also the best brands of flour.

There is an immense pile of bones and horns heaped up near the depot. Whole skeletons of Texas cattle and buffalo, with just enough of the hides and ligaments to hold them together, lay there in a heap. These bones and horns have been gathered up on the plains and are being shipped to some button factory east.

The shipment of cattle is on the increase rather than falling off. From one thousand to fifteen hundred head are daily shipped. Many of the cattle are shipped to the central and northern portions of the state for wintering. From what we can learn not over ten per cent. of all the shipments go to the markets direct. The town is full of buyers and cattle are commanding a good price. Ex-Gov. Robinson, Dunbar and other gentlemen from Douglas county, in this state, have been making purchases during the past week.

Column 2

The store of M. M. Emanuel was entered on last Friday night and about four hundred dollars' worth of silks and shawls stolen therefrom. The facts in the case, as near as we could gather them, are these: in a building adjoining Emanuel's store is a jewelry store kept by a Frenchman named Baron, who recently formed an acquaintance with a man from Texas who gave him such glowing accounts of that country that he concluded to go, and on Friday evening he gave his newfound friend money enough to buy a trunk, with instructions to bring it into the shop through the back door. He did as he was ordered. Baron immediately went to work packing the trunk with the jewelry which was in the shop, some of which belonged to other parties who had left it there for repairs - among the lot several valuable watches - and while he was thus engaged a third man came in with a load of silks and shawls which were also put in the trunk. The Texan, think-

ing that all was not right, went out of the shop and reported the proceedings to one of the policemen, who went to arrest them, but one of the parties was gone. Baron was arrested, brought to trial and bound over to appear at the district court. Failing to give bond he was re-committed.

On last Monday evening the society of the Presbyterian church of this city held their annual meeting. A goodly number of ladies and gentlemen, members and friends of the society, were in attendance. After the singing of a hymn, which was read by Mr. F. C. Martsolf, chairman, the treasurer, T. L. Nixon, read his annual report. It appeared from this that the society has raised for all purposes, including pastor's salary, sexton's services, repairs, and building of parsonage, about nine hundred dollars. Addresses were then delivered by Messrs. Harsen and Nixon, urging the importance of giving judiciously, proportionately and willingly – especially that of giving willingly. Refreshments were then partaken of, and the company engaged in social exercises, which were brought to a close by singing and the benediction. The following persons were elected to the office of trustees: Chas. S. Caldwell, president; Geo. H. Hyde, clerk, and Henry Kramer, treasurer. A vote of thanks was tendered to Mr. T. L. Nixon², the retiring treasurer of the church, who is about to depart for the Pacific coast in a few days, for the faithful discharge of his duties while occupying that office.

Real estate is brisk this week. Among the sales of Steele & Smith we note that of a large sale of city property to Mr. Ransom, of Jacksonville, Ill., who has moved his family here with the view of making this his future home. Next is a sale of ten acres on the east side of the railroad to Mr. Phillips, who has already let the contract for the immediate erection of a fine residence. Mr. Phillips is also making preparations to carry on the manufacture of brick extensively. Also thirty acres from the same tract to Mr. Daily. We did not learn the improvements to be made on this tract. The next is one of the old residents, who has such explicit faith in our young

and rapidly growing city. It is Mr. M. R. Moser, who has added to his already large list of lots and lands another five hundred dollars' worth of city lots. Moser does not only deal in real estate but runs an extensive wagon and carriage manufactory.

A dramatic and musical amateur concert will be given in Eagle Hall, in about ten days. The ladies and gentlemen who have kindly volunteered their services are as follows: Mrs. King, Mrs. Simmons, Mrs. Hall, Misses Kohn, Pittenger, Hills, Emma Smith, Messrs. Hyde, Gossard, Stanley, Sol. Kohn, Fred. Schattner, Geo. Henry, O. W. Bromwell, Will King, Chas. Schattner. The concert will be given in aid of the Methodist church just completed, and for the purpose of furnishing its interior. Messrs. E. Sillsbee, John Sillsbee and John Ritter, all first-class musicians, have kindly volunteered their services, which is a sufficient guaranty that the orchestra will be well looked after. The ladies and gentlemen have been rehearsing their respective parts for the past three weeks, and from all appearances the entertainment promises to be a complete success.

In accordance with the provisions of the new time table, which went into effect last Monday, Wichita becomes the terminus of the first division of the A., T. & S. F. R. R. This is a change that has been demanded for some time. Three-fourths of the business south and west of Newton comes to this place, and will continue to do so during the coming winter. Of course the long line of railroad that stretches away up the valley will change this in a few months. Passenger trains now arrive at 11:15 p.m. and depart at 2:40 a.m. The accommodation arrives at 6 a.m., and the stock express leaves at 6:30 p.m.

Geo. Crane, the gentleman who superintends the loading of cattle at the stock yards, met with a serious accident in which he came near losing his life, on Tuesday last. While they were engaged in loading cattle into the cars, Mr. Crane ventured to go n among them on foot, and while there one of the large steers attacked him, one of his horns entering his thigh, inflicting a large and serious wound. Mr. Crane is a good citizen and one of the best stock yard superintendents in the west. George has the sympathies of all his friends and acquaintances in his misfortune.

Quite a sprinkling of Emporia citizens visited the "metropolis" this week, in the persons of attor-

² Thomas L. Nixon returned to Wichita in time to marry Cora Matthews on 28 June 1876 in Sedgwick County. Thomas was born about 1849 in Pennsylvania, possibly in Allegheny County, and died 16 Apr 1891 in Tacoma, Pierce County, Washington. Cora was born 20 Oct 1854 in Illinois and died 23 Dec 1905; she is buried in Highland Cemetery in Wichita.

ney E. M. Ford, J. T. Hadley, of the firm of Fox & Hadley, and T. D. Bragunier, one of Emporia's live merchants. The latter gentleman is here with a view of starting a branch store. These gentlemen were very much astonished to see the amount of business that is being done here. One of them remarked that from appearances on the streets we do more business in one day than is done in Emporia in a week.

Mr. Kilburn, proprietor of the Burlingame Nursery, whose advertisement will be found in these columns, is selling immense quantities of fruit trees throughout this valley. His trees at the state fair surpassed all competitors in growth and healthfulness. Letters will reach Mr. Kilburn at Burlingame, Osage county, Kansas, at which point he grows his trees.

Column 3

W. W. Fagan, assistant superintendent of the Atchison, Topeka and Santa Fe railroad, was in town last Sabbath. He was accompanied by Mr. Bancroft, the new division superintendent, who takes charge of the line west of Newton. Mr. Fagan says the main line is being pushed rapidly up the Arkansas river, the western end not being some fifty miles beyond Dodge. The road will reach the west line of the state within a few weeks, when much of the New Mexico freight will pass this way.

Mayor Orin T. Welch, of Topeka, paid the metropolis of the Southwest a visit last week. Although he had read all the newspaper accounts of the place he expressed himself as completely surprised at the amount of business being done here, as also at the size and substantial appearance of the place. He could not understand how it was possible to do so

much in two or three years. He thinks this valley is as fine as the sun every shone upon. Correct.

C. M. Garrison has four workmen in his employ. Each man in his place turns off two sets of harness per week, making in all eight sets per week. We would advise those needing harness or anything in the saddlery line to go to Garrison's and have it made to order. Do not buy ready-made eastern work – it won't pay you. C. M. will buy all the hides and buffalo pelts that you will bring him and pay you a good price for them.

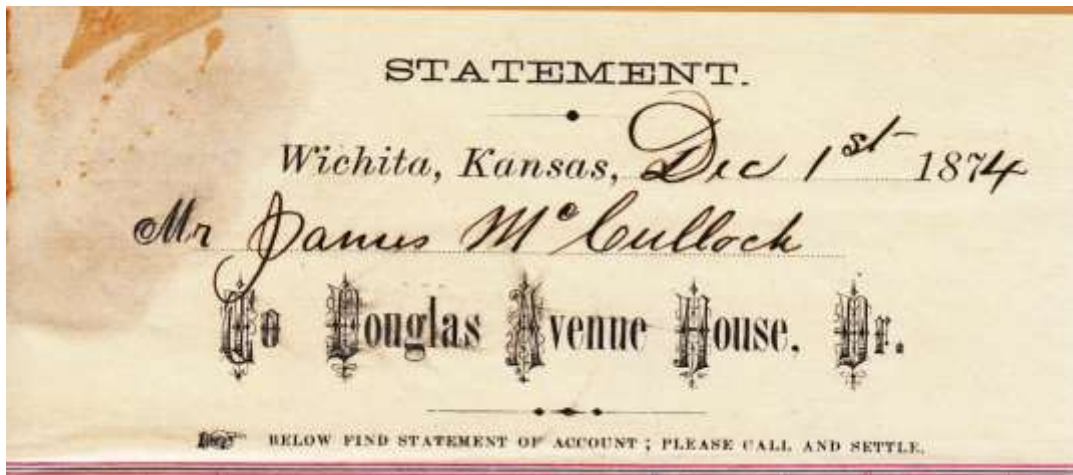
SPECIAL NOTICES.

J. H. Black begs leave to announce to his many friends and the public generally that having purchased the interest of T. L. Nixon, of the firm of Black & Nixon, he will continue to do business at the old stand, Diamond Front, 25 Main street. He has just received a large and well selected stock of groceries. All who may favor him with their patronage will find it to their advantage. Remember, the Diamond Front, 25 Main street – Fairbank's standard scales in front of the store.

Dr. A. J. Goggins, late of New York, comes among us and offers his professional services to the public. He makes the treatment of venereal [sic] and chronic diseases a specialty.

Mrs. M. J. Denny, of Topeka, has opened rooms next door north of Mrs. Watson's millinery shop, where she will keep on hand all styles of real and imitation hair goods. Also made to order all kinds of head ornaments and hair jewelry.

Take your hides to C. M. Garrison, the oldest hide buyer in Wichita. \$2.75 for buffalo bulls.



UPCOMING MHGS EVENTS

All events and programs will take place at the MHGS Library, 1203 N Main, unless otherwise noted.

All events and programs are free and open to the public.

A non-member access fee is collected for research in the MHGS library before or after the event/program.

White Chapel Project – Saturday, December 6, 10 AM

Find out how our ongoing project to photograph and transcribe White Chapel Cemetery headstones is progressing. We will discuss the changes to the BillionGraves app and the advantages we have discovered. This long term project promises to be an asset for the community and a learning experience.

Genealogical DNA SIG – Second Saturday at 1 PM – Paul Renner Smith

Sessions will be held December 13, January 10, February 14 all from 1 PM to 2 PM

Discover the latest news in the field of Genealogical DNA study. This informal discussion group uses the newest information available to learn what DNA can tell us about our ancestors. Learn what different tests are available and where.

Genealogy on the Internet – Third Saturday 10 AM to Noon – Jim Scharnhorst

Sessions will be held December 20, January 17, February 21, all from 10 AM to Noon

Discuss the process of researching our family using the internet. Genealogy research has embraced the computer as not only the most efficient way to organize data, but the quickest way to access historical records. The ongoing digitization of documents for preservation purposes makes them searchable, economical, and immediately available. Our meeting is for sharing the sites we find most useful, finding solutions to the problems that have developed and learning what the future holds.

DAR Special Interest group – Third Saturday 1 PM to 2 PM – L. Williams & S. Bush

Sessions will be held December 20, January 17, February 21, all from 1 PM to 2 PM

Do you have ancestors who served in the American Revolution, either in a military unit or by providing service in another way? We can help you with the application process, show you what records you need to qualify, and give you all the details. Led by Sandi Bush and Lucille Williams.

Afro-American SIG – Fourth Saturday 1 PM to 2 PM – led by Jozel Smith Eckels

Sessions will be held January 24 and February 28, from 1 PM to 2 PM

Special Interest Group encourages historical and genealogical study of families of any ethnic group with special emphasis on Afro-Americans. This informal group will seek to learn more of the history and factors within the family stories we have been told. We will demonstrate how to research your family tree with the goal of discovering and understanding your family history. The discussions will include a variety of methods, including exploring public records, interviewing older relatives and preserving information.

INDEX

Abbott	68	Butler.....	83	Dumont	80
Abele	77	Caldwell	71, 86, 90	Dunbar.....	89
Adams	84	Callahan	79	Duncan	79, 84
Adamson	79	Campbell.....	71	Dunlap.....	80
Allen.....	71	Cann	77	Dunn.....	84
Altman.....	83	Carlton.....	80	Dutcher.....	78
Alumbaugh.....	79	Carpenter.....	67, 78	Dwyer.....	78
Amey	84	Carter.....	79	Dyer.....	68, 88
Armke	79	Cather	69	Elson	79
Ashbaugh	71	Chapman	78, 80	Emanuel	69, 89
Austin.....	80	Chouteau	79	Emerson	68
Bailey	89	Christy.....	79	English	68
Baker	71	Claggett.....	80	Fadley.....	86
Balderston	88	Clark.....	67, 78, 80, 86	Fagan.....	91
Ballantine	85	Combs	78	Farmer	86
Ballard.....	78	Conklyn.....	69	Fausnacht	79
Bancroft.....	91	Connelly.....	77	Feltner	77
Barker.....	88	Conner.....	67	Fesmire.....	80
Barnhisel	79	Cook.....	77, 78, 89	Findeiss	79
Baron.....	89	Cooley	86	Fisk.....	80
Barrett	77	Cooper.....	77	Fletcher	85
Barringer	80	Corbett.....	71	Foerst.....	85
Barton.....	79	Cornwell.....	83	Follett	77
Basore	84	Couril	67	Fookes	84
Bastow.....	85	Cousins.....	77	Ford.....	72, 85
Berry	77	Cox	78, 80	Fox	84
Beshears	79	Craig.....	80	Francis.....	78
Beuker	77	Crandall.....	79	Frewert	77
Billings	80	Crane	90	Fultz	67
Bixby	85	Crawford	78	Funk	86
Black	68, 77, 91	Crouch.....	84	Gannaway	85
Blue	80	Culbertson	68	Garland.....	69, 71
Bonham	85	Cunningham	78	Garrison.....	91
Bowers	83	Daily.....	90	Gehring	84
Brady(ddy)	80	Damon.....	86	Gilbert	77
Breneman	79	Daugherty.....	83	Gillenwater.....	79
Brittenfield	84	Davidson	84	Gillespie	84
Bromwell.....	90	Davis	88	Gilstrap.....	80
Brown.....	85, 88	Delivuk.....	77	Gise	80
Bruner	84	Denny.....	91	Gleeson	85
Bunton.....	79	Derbeque	77	Godfrey	77
Burke(ucke).....	78	Diefenbach	83	Goeldner.....	77
Burnett.....	78	Dilley.....	80	Goggins	91
Burr	78	Dowell.....	78	Goodrick	88
Busenbark	79	Drain	77	Gossard	90
Buss.....	80	Drake.....	85	Green.....	78, 85

Index, continued

Greiffenstein	68	Kerns	80	McDaniel.....	85
Grieffenstein	88	Kerr	83	McFie	84
Grosz	77	Kerschen	80	McGlynn	85
Hall.....	90	Kilburn	91	McIntire.....	70
Hamilton	85	King.....	70, 90	McIntyre.....	70
Hamm.....	77	Kirkpatrick	68, 85, 88	McKee.....	69, 78
Harmon	83	Kitchin.....	78	McNeal.....	79
Harper	85	Kohn.....	90	McVicker	80
Harrison.....	83	Kramer	90	Mead	69, 71, 81, 82
Harsen	88, 90	Kraus	78	Means	84
Haskins.....	80	Kyle.....	84	Meek	78
Hass.....	85	Lamb	89	Meers.....	78
Hawley	78	Lambdin	88	Merchant	79
Hayden	79	Lashly(ley)	77	Miller.....	84
Heinricks	84	Lasota.....	77	Mitchell.....	71
Henry.....	90	Lauterbach.....	86	Morris.....	68
Herring	80	Lavers.....	77	Morton.....	80
Hess.....	77	Lawson.....	80	Moser	90
Hibbard	78	Layton	78	Munson	78
Hicks	85	Lease	67	Muse.....	71
Hill	79	Leggett	80	Neises.....	80
Hills.....	80, 90	Leichhardt	85	Nesbitt	79
Hitchcock	84	Leis.....	86	Nessly.....	72
Hobbs	89	Lewis.....	80, 83	Newbanks.....	79
Hobson	70, 88	Likely	79	Newton	78
Hooker.....	69	Lindsay.....	68, 69	Nichols	89
Hope.....	89	Litsey.....	78	Nield.....	80
Hoss.....	77	Litzenberg	68	Nixon.....	68, 90, 91
House	79	Long	77	Nocks	79
Houser(owser).....	79	Love	67	Nutt	83
Humphrey	80	Lovett	67	Nystrom.....	79
Hutchinson	86	Luce.....	83	O'Donnell	84
Hutchison	89	Ludlum.....	84	Ogden.....	84
Huyck.....	67	Magruder.....	80	Olden.....	86
Hyde.....	71, 90	Mahaney.....	84	Painter	80
Irish	83	Mahlandt	86	Palmer	78
Irwin	77	Main	85	Patterson.....	86
Jackson.....	86	Malm	80	Patton	84
Jansen.....	83	Malone	78	Payne.....	72
Jenkins.....	88	Martin.....	69, 70, 77	Peck.....	83
Jessup	78	Martsof.....	71, 90	Peltzer	84
Johnson	80	Mathewson	82	Peterson.....	77
Johnston	79	Matthews.....	90	Peyton	68
Jones.....	83	Maxfield.....	72	Phenneger.....	78
Kane	79	Mayne	80	Philips(lips)	77
Kellogg.....	89	McAllister	79	Phillip.....	69, 70
Kelly.....	84, 86	McClung	77	Phillips	90
Kennedy	67	McCoy.....	78	Pierce.....	89
Kennick	77	McCulloch.....	68, 69	Pile	79

Index, continued

Pingel	85	Shafer	86	Truman	79
Pittenger	89, 90	Shaffer	77	Turner	78
Pond	85	Shanklin	88	Underwood	85
Porter	68, 78	Shannon	71	Utt	80
Pullen	80	Shellenberger	86	Utz	79
Purvis	79	Sherar	86	Van De Water	77
Ransom	90	Shoemaker	79	Vaughn	67
Read	80	Shores	86	Vermillion	78
Reed	83	Shuman	70	Waldorf	79
Reese	71	Sillsbee	90	Walker	78, 85, 88, 89
Reibel	86	Simmons	90	Walter	78
Releford	78	Sinclair	78	Wampler	86
Rhea	77	Sluss	68, 71	Washburn	84
Rhodes	67	Smith	77, 79, 88, 89, 90	Weidman	85, 86
Rice	85	Snyder	80	Weinheimer	77
Richards	79	Sommers	85	Welch	91
Riggs	80, 88, 89	Sonderup	83	Wells	69, 79
Ripp	67	Squire	84	Wemple	79
Ritter	90	Stafford	84	Wharton	67
Roarke	68, 71	Staley	78	Wheeler	78
Robbins	77	Stamback	79	Whiteside	79
Roberts	77	Stanley	68, 90	Wicham	78
Robinson	89	Stebbins	83	Williams	80
Rodolf	85	Steele	83, 86, 88, 90	Williamson	84
Rogers	80	Stelph	79	Wills	77
Ross	77, 79	Stevenson	71	Wilson	78, 83, 86
Ruckle	79	Stewart	67	Winchell	85
Ruff	86	Stice	77	Wirges	77
Rummage	80	Stillwell	80	Wise	78, 84
Russell	86	Sullivan	80	Woltz	77
Rutherford	78	Swan	72	Wood	78
Salmons	79	Taylor	67, 78, 80	Woodall	78
Saunders	85	Teachout	80	Woodman	88
Schattner	90	Thomas	83, 89	Wright	78, 83
Schmitt	80	Thompson	84, 89	Yeager	77
Scott	89	Tibbals	84	Young	79, 83
Seeger	85	Trimble	84	Zaro	79
Senter	79	Truex	86	Zimmerman	78



PUBLICATION ORDER FORM

Name _____

Address _____

City, State, Zip _____

Tax exemption number, if applicable _____

Publication Number/Title	Qty.	Unit Price	Total Price

Make check payable to, and mail to:

Midwest Historical and Genealogical Society
PO Box 1121
Wichita, KS 67201-1121

POSTAGE/ HANDLING (see chart below)	
SUBTOTAL	
* ‡ KS SALES TAX (if applicable) ____ %	
TOTAL DUE	

SHIPPING AND HANDLING CHART

Merchandise Total	Shipping Charge
\$0.01 - \$24.99	\$4.00
\$25.00 - \$49.99	\$5.00
\$50.00 - \$99.99	\$7.00
\$100.00 - \$299.99	\$12.00
For each \$100.00 of merchandise above \$300.00, add \$4.00 to the \$12.00	

‡ Sales tax applies to Kansas destinations only; tax is the % rate at the delivered destination.

* If you are tax exempt send copy of exemption certificate with order.

Tax Exempt # _____



MIDWEST HISTORICAL AND GENEALOGICAL SOCIETY

PUBLICATIONS FOR SALE

Use order blank on last page to order

Pub #	Publication Title	Price
Wichita and Sedgwick County, KS		
101	History of Wichita and Sedgwick Co., KS. Past and Present, 1910, Vols. 1 and 2 in one book, reprint, 956 pgs., indexed. (hardbound)	\$45.00
21	Wichita City Death Certificates from the City Directory and cemeteries (1887-1899). Indexed, 304 pgs.	\$35.00
22	Flanagan-Hunt Mortuary Records, Vol I, Apr 16, 1912 - Apr 15, 1915, 150 pgs.	\$20.00
23	Flanagan-Hunt Mortuary Records, Vol II, Apr 1915 - Nov 1917, 150 pgs.	\$20.00
29	Wichita Fire Fighters 1881-1981 (History & Personnel Records), 158 pgs	\$20.00
24	1878 Wichita City Directory names, 34 pgs	\$6.00
25	1883 Wichita City Directory names, 72 pgs	\$10.00
26	1885 Wichita City Directory names, 114 pgs	\$15.00
27	1886/7, 1894, 1900 Wichita Business Directories, 75 pgs. Compiled by Barbara Marsh.	\$10.00
49	Abstracts of Marriages, Deaths, and other news items from Wichita newspapers and KS census records. Sept 1 to 6, 1879; and Sept 1, 1884 to Mar 31, 1885. Compiled by Jerry Stout. 94 pgs., indexed	\$15.00
2	Sedgwick Co., KS Marriage Records Book 1, 204 pgs, County Books #A-D, May 7, 1870 - Oct 22, 1889, index. Compiled by Bill Pennington	\$25.00
3	Sedgwick Co., KS Marriage Records Book 2, 213 pgs, County Books #E-H, Oct 22, 1889 - Jul 13, 1901, index. Compiled by Bill Pennington	\$25.00
4	Sedgwick Co., KS Marriage Records Book 3, 212 pgs, County Books #I-L, Jul 15, 1901 - Nov 11, 1908, index. Compiled by Bill Pennington	\$25.00
5	Sedgwick Co., KS Marriage Records Book 4, 189 pgs, County Books #M-P, Nov 11, 1908 - Jan 22, 1913, index. Compiled by Bill Pennington	\$25.00
6	Sedgwick Co., KS Marriage Records Book 5, 214 pgs, County Books #Q-T, Jan 18, 1913 - Sept 21, 1917, index. Compiled by Bill Pennington	\$25.00
7	Sedgwick Co., KS Marriage Records Book 6, 185 pgs, County Books #U-X, Sept 22, 1917 - Aug 4, 1920, index. Compiled by Bill Pennington	\$25.00
19	Sedgwick Co., KS Marriage Records Book 7, 253 pgs, County Books #Y-BB, Aug 4, 1920 - May 17, 1924, index. Compiled by Bill Pennington	\$25.00
20	Sedgwick Co., KS Marriage Records Book 8, 215 pgs, County Books #CC-FF, May 19, 1924 - Dec 1, 1928, index. Compiled by Bill Pennington	\$25.00
70	Sedgwick Co., KS Marriage Records Book 9, 192 pgs, County Books #GG-JJ, Dec 1, 1928 - Nov 25, 1933, index. Compiled by Bill Pennington & Kimberly Rix	\$25.00
72	Sedgwick Co., KS Marriage Records Book 10, 196 pgs, County Books #KK-NN, Nov 25, 1933 - Aug 22, 1938, index. Compiled by Bill Pennington & Diana Miller	\$25.00
73	Sedgwick Co., KS Marriage Records Book 11, 196 pgs, County Books #OO-QQ, Aug 22, 1938 - Dec 27, 1941, index. Compiled by Bill Pennington & Diana Miller	\$25.00
28	1888 & 1891 Sedgwick Co., KS Directory Names, 20 pgs. (Wichita not included)	\$5.00
30	1903/4 Sedgwick Co., KS Directory Names, 39 pgs.	\$6.00
33	Sedgwick Co., KS Naturalizations and Declarations of Intentions, 1870 - 1906, 93 pgs. Compiled by Barbara Marsh	\$12.00
9	Index to Portrait and Biographical Album of Sedgwick Co., 1888, 166 pgs.	\$22.00
10	Area Keys: Sedgwick Co, KS, 52 pgs.	\$7.00
58	Sedgwick Co., KS Landowners & Tenants Directory, 1971, 52 pgs.	\$7.00
60	Obituaries from the Wichita Beacon Nov 2, 1885 - Jun 11, 1886, 14 pgs.	\$4.00
11	List of Cemeteries in Sedgwick Co., KS, w/map, 1981, 7 pgs.	\$4.00
71	Probate Index-18th Judicial District, Sedgwick Co., KS-1870 to Nov 1917	\$25.00
Butler County, KS		
38	Butler Co., KS Wills 1869 - 1901, 60 pgs.	\$10.00
36	Area Keys, Butler Co., KS, 50 pgs.	\$7.00
37	Butler Co., KS Marriages 1861 - 1885, 74 pgs.	\$10.00

MIDWEST HISTORICAL & GENEALOGICAL SOCIETY, INC.
 PO BOX 1121
 WICHITA, KANSAS 67201-1121

Change Service Requested

Publications for Sale, Continued

Pub #	Publication Title	Price
Chautauqua County, KS		
47	Chautauqua Co., KS Marriage Records, Book 1, County Books #A-D, index, 103 pgs, Jun 5, 1870 - Dec 29, 1891. Compiled by Charlotte Bennett	\$15.00
48	Chautauqua Co., KS Marriage Records, Book 2, County Books #E-H, index, 86 pgs, Jan 6, 1892 - Aug 22, 1905. Compiled by Charlotte Bennett	\$15.00
48A	Chautauqua Co., KS Marriage Records, Book 3, County Books #I-L, index, 112 pgs, Aug 22, 1905 - Apr 25, 1926.	\$15.00
50	Chautauqua Co., KS Marriages and Deaths From CEDAR VALE COMMERCIAL, Dec 1984 - Dec 1985, 12 pgs.	\$5.00
Harvey County, KS		
39	Harvey Co., KS Marriages 1872 - 1895, 120 pgs	\$15.00
52	Harvey Co., KS Marriages 1896 - Apr 24, 1898, index, 21 pgs	\$5.00
51	Deaths, Marriages and Births from Newton, KS local newspapers, selected from 1887 - 1888, 1892 - 1894, 1901 - 1902, 1915. 94 pgs, indexed.	\$25.00
Sumner County, KS		
41	Argonia Cemetery Index, Sumner Co., KS, 47 pgs.	\$6.00
203	Tombstone Inscriptions, Sumner Co., KS (hardbound), 406 pgs. Compiled by Robert Brady.	\$45.00
42	Sumner Co., KS Marriages, Book A, 1871 - 1880, index, 34 pgs. Compiled by Barbara Marsh.	\$6.00
59	Index to Sumner Co., KS Portraits & Biographical Album, 35 pgs.	\$6.00
204	Caldwell Cemetery, Sumner Co., KS (hardbound), 227 pgs, Dilmond D. & Evelyn I. (Sturm) Postlewait	\$45.00
Territorial Kansas		
44	Kansas Territorial Marriages, 1854 - 1861, 24 pgs.	\$6.00
43	Kansas Territorial Deaths, 1854 - 1861, 21 pgs.	\$6.00
62	Kansas Marriages, Births & Deaths Before 1854, 48 pgs.	\$10.00
Midwest Historical & Genealogical Society		
104	Past Issues of the MHGS REGISTER Any three issues.	\$2.50 \$6.00
53	Topical Index of MHGS REGISTER, Vols I -XXXI, 27 pgs.	\$3.00
105	Historical Buildings Note Cards, packet of 4, one each of original sketches of the Wichita post office, livestock exchange, Missouri Pacific depot, and the Santa Fe station	\$6.00
Midwest Area		
201	Index of Grant Co., OK Land Patents, 112 pgs (hardbound) with maps. Dilmond D. & Evelyn I. (Sturm) Postlewait	\$25.00