



# **MIDWEST Historical and Genealogical REGISTER**

*VOL. XLVII, #3  
OCT-NOV-DEC, 2012  
WICHITA, KS*

# MIDWEST HISTORICAL & GENEALOGICAL SOCIETY, INC.

P.O. BOX 1121, WICHITA, KANSAS 67201

<http://skyways.lib.ks.us/genweb/mhgs/index.html>

(316) 264-3611

ISSN 0271-8685

## BOARD OF DIRECTORS

President..... Roy Hughes.....barnstall@cox.net  
First Vice-President.....Helen Burt..... hhb669@cox.net  
Second Vice-President .....Dan Anderson.....dan\_anderson50@hotmail.com  
Third Vice-President .....Gwen Bridgwater .....gbridgwater@gmail.com  
Secretary .....Elaine Sunde ..... elaine@sunde3.com  
Treasurer.....Janet Sherman..... janet-sherman@sbcglobal.net  
Librarian ..... Suze Gallagher ..... mimisuze61@hotmail.com

## COMMITTEE CHAIRS

Alert Editor ..... Lucille Williams .....lwilliams45@cox.net  
Building and Grounds ..... Bob Price..... bprice21@cox.net  
Membership..... Bev Jackson..... bevjackson20@gmail.com  
Publicity..... Francene Sharp ..... fsharp1080@att.net  
Register Editor..... Ann Hathaway Boll..... ann.boll@sbcglobal.net  
Technology ..... Vince Hancock ..... quakerwiz@gmail.com



## The MIDWEST HISTORICAL & GENEALOGICAL SOCIETY, INC.

is a non-profit, educational organization

with a research library located at 1203 North Main, Wichita, Kansas.

Hours are 9:00 AM to 4:00 PM Saturdays and Tuesdays, unless otherwise notified.

Correspondence with the Society should be mailed to PO Box 1121, Wichita, KS, 67201.

Address membership dues to the attention of the Membership Chairman.

*Cover drawing by Charles Sanderson*

*House drawing by Sharon Korst*

The **Register** is published quarterly by the Midwest Historical & Genealogical Society, Inc. to provide information about genealogy and regional history to its members and interested parties.

**Publication mailing dates:** May 15, August 15, November 15, and February 15.

**Back Issues:** Recent issues are available for \$2.50 each, postpaid.

**Membership:** Includes one issue of the Register each quarter. Dues received after the publication date will receive back issues for that year with the next regular mailing.

#### **Membership Year –**

##### **April 1 through March 31**

Student (17 & under) .....	\$10.00 / \$20.00
Libraries .....	\$20.00 / \$40.00
Individuals .....	\$25.00 / \$40.00
Couples .....	\$30.00 / \$45.00
Sustaining .....	\$50.00

#### **Lifetime Membership Fees**

##### **One time only**

Life (single) .....	\$300.00
Life (couple) .....	\$500.00
Benefactor .....	\$800.00

**Queries:** Members may submit two queries per issue. Non-member queries are \$1.50 each or \$2.50 with a copy of the Register in which the query appears.

**Submissions:** Send queries and articles for publication to MHGS, Attn: Quarterly Editor. Include the date and your signature with "permission to publish."

All material for publication is subject to editing. Every effort is made to publish accurate material. Midwest Historical & Genealogical Society, Inc. and the Editor will not assume responsibility for errors on the part of the contributor. We are not responsible for publishing rights of contributed material. MHGS does not buy articles for publication.

**Advertising:** Ad space is sold in 2½" x 2½" block units, 12 blocks per page. Cost for a single block is \$5.00 per issue. Contact the Editor for additional information.

**Library/Office Location:** 1203 N. Main, Wichita, Kansas, 67203, (316) 264-3611

# REGISTER

A Magazine for members and friends interested in Genealogy

Volume XLVII #3

OCT-NOV-DEC 2012

## Table Of Contents

ED. NOTE: .....	66
NEW MATERIALS IN THE MHGS LIBRARY .....	67
DECODING THE FAMILY LEGEND OF TIES TO WILLIAM ALLEN WHITE .....	69
NEW MATERIALS IN THE WICHITA PUBLIC LIBRARY .....	71
MARRIAGE RECORDS .....	75
THE WICHITA WEEKLY EAGLE .....	79
WICHITA HISTORICAL PANEL NO. 70 .....	85
WICHITA HISTORICAL PANEL NO. 71 .....	86
18TH JUDICIAL DISTRICT PROBATE INDEX .....	87
UPCOMING MHGS EVENTS .....	91
INDEX .....	92
PUBLICATION ORDER FORM .....	96

#### **Library/Office Location:**

1203 N. Main  
Wichita, Kansas 67203  
(316) 264-3611

## Ed. Note:

I had intended to have this issue of the *Register* completed, sent to the printer, emails sent out with the links to the electronic version sent out, and all by Halloween. So much for that idea! Halloween zipped by, so did November... Thanksgiving was yesterday, and I am still struggling to get this page finished; it's always the most difficult part of the issue for me. Speaking of Thanksgiving, I hope you all had a good one with family and friends, making memories that will put a smile on your face whenever they come to mind. Now it's time to get ready for Christmas... where did the year go??

There's a wonderful fund-raising project in the works at MHGS, the Heritage Cookbook project. Gwen Bridgwater, a relatively new MHGS member, and Elaine Sunde are co-chairs of the committee in charge of this project. I don't cook much (it usually turns out hazardous to everyone's health when I do), so I've asked Mom to think of recipes handed down in her family that she thinks would be a good fit for the book. Mom's family is from northern Virginia; we laughed about the family recipe for sweet tea... add a little tea to your bowl of sugar! ☺ I'm checking with a cousin on my father's side of the family to see if she knows of any coastal North Carolina family recipes I could share. I hope you will consider contributing a recipe or two from your family... I might not try the recipe, but I would enjoy reading the stories! The *Alert* has more detailed information about

the cookbook project than I have room to include here, or you can call Gwen (316-992-4675) or Elaine (316-641-4496) for more information.

Another recent development at MHGS that has me very excited is Jozel Smith Eckels' new Afro-American Special Interest Group, which will meet for the first time at the MHGS library on Saturday, December 15, at 1:00 PM. My family is overwhelmingly and boringly Anglo-Saxon with most of my ancestors arriving in the New World before 1700, so I can't imagine the difficulties that Jozel and other African-Americans face in researching their family history. Thank you for sharing your knowledge with others, Jozel!

We are also getting to that time of year when the Nominating Committee is gearing up to find board members and committee chairpersons for the 2013-2014 fiscal year here at MHGS. Please consider volunteering your time and talents to help MHGS thrive and grow.

Oh, and before I forget... London was fabulous! No, we didn't go to any of the Olympic events, there were too many other things to do and see... we went to the Imperial War Museum at Duxford, where a special vintage air show was taking place, the spouse was delighted... Stratford-upon-Avon was the next stop, I

was so excited to see Anne Hathaway's Cottage in person with my own two eyes. Stonehenge and Woodhenge were also on my Bucket List, still can't believe I was there! We toured Hatfield House one day, where Elizabeth I was when she found out her half-sister Mary had died and she was Queen. The Hatfield descendants still own the house, and they must have all been packrats since there is a research library in the house I could have spent years exploring. We also spent several days in downtown London touring the Tower of London and Buckingham Palace, watching the changing of the guard, seeing the Churchill War Rooms (also an Imperial War Museum), Big Ben, and other sites too numerous to mention. I'm ready to go back, there's still so much I haven't seen yet!

Thanks for your support of MHGS, and I'll see you in 2013! Happy Holidays!

Ann Hathaway Boll  
Register Editor  
ann.boll@sbcglobal.net



# NEW MATERIALS IN THE MHGS LIBRARY

Compiled by Julia Langel

Accession Number	Title	Author	Pub Date
A-210 001	Early Kansas: An Historical Atlas	Preston, R.; Preston, M.L.	1997
A-210 002	Morrison Map Guide for Wichita, Kansas	Morrison, James B.	1977
A-460 001	The Shaping of Vermont: From the Wilderness to the Centennial 1749-1877	Graffagnino, J. Kevin	1983
A-600 001	Campaigns of the American Revolution: An Atlas of Manuscript Maps	Marshall, D. W.; Peckham, H. H.	1976
A-600 002	McClellan's Map of Windham County, Vermont 1856	Allen, David	1984
A-600 002	Atlas of American History	Ferrell, R. H.; Natkiel, R.	1987
A-600 003	Century of Progress Atlas of the World	Smith, Lloyd Edwin	1933
D-210 001	Telephone Directory, Wichita Kansas April 1936	Southwestern Bell Telephone Co	1936
G-D 071	Finding Fathers: Lost. Found. Remembered.	Davis, Clyde P.	2011
I 225	Getting Started in Genealogy Online	Dollarhide, William	2006
I 226	Antique Maps	Moreland, C; Bannister, D.	1983
P-G 001 v1	Gibson Photograph Collection	MHGS	n/a
P-G 001 v2	Gibson Photograph Collection	MHGS	n/a
P-G 001 v3	Gibson Photograph Collection	MHGS	n/a
P-O 001	Ottman Photograph Collection	MHGS	n/a
P-W 001	Freida M Wells Photograph Collection	MHGS	n/a
R-180 166	Marriages of Adams County, Illinois 1825-1860 volume 1	Great River Genealogical Society	1979
R-180 167	Deaths and Marriages from Early Quincy Papers 1835 - 1850	Parrick, L.K.; Frye, L.H.; Kay, J.K	1979
R-200 066	Past and Present of Greene County, Iowa	Stillman, E. B.	1907
R-210 575	Uncle Bob: Aplomb Magnificent	George, Bob	1993
R-210 578	Hampton and the Big Timber Valley	Higgins, S.; Thompson, C.	1997
R-210 579	The Civil War in Kansas	Bisel, Debra Goodrich	2012
R-210 580	A Comprehensive City Plan for Wichita, Kansas 1923	Bartholomew, Harland	1923
R-210 581	Fort Larned: Guardian of the Santa Fe Trail	Oliva, Leo E.	1982
R-210 582	Fort Hays: Keeping Peace on the Plains	Oliva, Leo E.	1980
R-210 583	Fort Scott: Courage and Conflict on the Border	Oliva, Leo E.	1996
R-210 584	Wichita's Population: Its Background, Growth and Future	Bartholomew, Harland	1943
R-250 123	Carroll County, Maryland Marriage Licenses 1837-1899	Carroll County Public Library	1995
R-250 124	Early Lists of Frederick Countians [Maryland] 1765-1775	Wright, F. Edward	2007
R-300 010 v04	Missouri Miscellany	Woodruff, Mrs. Howard	1977
R-300 010 v07	Missouri Miscellany	Woodruff, Mrs. Howard	1979
R-300 010 v10	Missouri Miscellany	Woodruff, Mrs. Howard	1980
R-300 010 v13	Missouri Miscellany	Woodruff, Mrs. Howard	1982
R-300 010 v17	Missouri Miscellany	Woodruff, Mrs. Howard	1984
R-300 209	Wills 1841-1882 Andrew County, Missouri	Andrew Co Historical Society	1979

New MHGS Materials, continued

Accession Number	Title	Author	Pub Date
R-300 210	History of Lincoln County, Missouri, From the Earliest Time to the Present	Goodspeed Publishing Co	1888
R-300 212	Jefferson County, Missouri, Death Records 1883 – 1892	Hayes, Cindy	n.d.
R-300 213	Jefferson County, Missouri, Marriage Records 1825 - 1860	Jefferson Co Gen Soc	n.d.
R-300 214	Jefferson County, Missouri, Marriage Records 1861 – 1874	Jefferson County Gen. Soc.	n.d.
R-300 215	Jefferson County, Missouri, Marriages 1875 – 1880	Jefferson County Gen. Soc.	n.d.
R-300 216	Jefferson County, Missouri, Marriage Records 1910 - 1915	Jefferson County Gen. Soc.	n.d.
R-300 217	Jefferson County, Missouri, Index to Probate Records	Jefferson County Gen. Soc.	n.d.
R-300 219	The Genesis of Missouri: From Wilderness Outpost to Statehood	Foley, William E.	1989
R-300 220	Platte County, Missouri, Records 1839-1849	Murray, Betty Runner	1993
R-300 318	Marriage Records of Platte County, Missouri Volume I	Welsh, Genrose	1985
R-300-211	Death Notices from Jefferson County Missouri Newspapers 1866-1930	Lang, Della	2004
R-370 086	New York State Censuses & Substitutes	Dollarhide, William	2005
R-370 087	The Secret City: Woodlawn Cemetery and the Buried History of NY	Goodman, Fred	2004
R-380 274	Tombstone Inscriptions & Family Records of Jefferson Co, Ohio	Powell, Esther Weygandt	1990
R-390 103	Chickasaw Nation Groom Index 1895-1907	Kinard, Mary Turner	1992
R-390 104	Chickasaw Nation Bride Index 1895-1907	Kinard, Mary Turner	1992
R-410 314	History of Northumberland County, Pennsylvania	Bell, Herbert C.	1891
R-470 011 v1	Virginia Research Notebook v1	Eakle, Arlene	1989
R-470 011 v2	Virginia Research Notebook v2	Eakle, Arlene	1989
R-470 011 v3	Virginia Research Notebook v3	Eakle, Arlene	1989
R-470 011 v4	Virginia Research Notebook v4	Eakle, Arlene	1989
R-470 061 v2	Shenandoah County, Virginia Deed Books E, F, G, H 17	Gilreath, Amelia	1988
R-470 337 v3	Russell County Virginia Deed Book 1798-1806	Colley, Tom	1995
R-470 337 v4	Russell County Virginia Deed Book 1787-1795	Colley, Tom	1995
S-071	Putnam Co., Missouri Obituaries 1965 & 1966	Akers, Edna	n.d.



# DECODING THE FAMILY LEGEND OF TIES TO WILLIAM ALLEN WHITE

By Beth Foulk

[beth@genealogydecoded.com](mailto:beth@genealogydecoded.com)

[www.genealogydecoded.com](http://www.genealogydecoded.com)

Do you have a family legend that you've always wanted know the truth about? I think that's one of the best parts of genealogy. It's the detective work unpacking fact from fiction among the family stories that we all carry forward. Was grandpa a bootlegger? How did that family make their fortune? Did our family encounter the Native Americans on the frontier? Did we cross paths with a famous person?

We all love shaking the family tree to see what falls out.

One tool I've found indispensable in researching my ancestors and even shining light on a family legend is timelines. The reason timelines prove so helpful is that they can clearly outline - and in this ancestor's case - contrast time and place for two persons, making the conclusion about their paths crossing pretty clear.

Let me show you what I mean.

## The Legend of William Allen White

One of the many family stories I heard growing up was that my great grandfather, Frank Watson (b. 1864, MA, d. 1954, KS). He allegedly worked for or, more specifically, set type for William Allen White, the famed newspaper publisher and activist. Wouldn't that be neat if my great grandpa Frank played a role - no matter how small - in the work of this historic American figure? The story is all the more exciting because my father was a career printer, following his grandfather in a related career.

As the self-appointed family history researcher, I set out to prove or debunk this mystery once and for all.

## Research Road Traveled

### Step 1. Outline the Ancestor's Life

Long before investigating the William Allen White legend, I dutifully built a detailed timeline of Frank Watson's personal history, which included: 1) how and when he came to Kansas; 2) when and where he married; 3) his employment history; 4) the birth of children in Atchison, Kansas; 4) the family's migration to Wichita, Kansas, his employment history, and church involvement there; and finally 5) his death in Wichita. With his personal story in hand, I could turn to peeling back the details on the family legend.

### Step 2. Make a Plausible Hypothesis

When Frank Watson's timeline was complete, I had several facts upon which to make a comparison with William Allen White's life. Frank was a professional printer in Atchison, and he worked at the Atchison Globe. He was in the right profession for at least part of his life to make the legend that he knew or worked with Mr. White plausible. He lived in Atchison, then Wichita, which geographically bookend Emporia. Finally, I had a five year gap in Frank's migration from Atchison to Wichita which made a stay in Emporia possible. With a handful of hope, and a few loosely tied together facts, I had a working theory that my ancestor, Frank, could have worked for William Allen White. The legend could be true.

### Step 3. Paint a Timeline of the Historic Figure

At this point, I have a pretty good handle on my ancestor's life timeline, but only a vague knowledge of where and when William Allen White lived. So my next step was to create a timeline of Mr. White's life. Honestly, this was pretty easy. A quick visit to Wikipedia ([www.wikipedia.com](http://www.wikipedia.com)), gave me the basic dates and facts about William Allen White. He was born in Emporia, Kansas, briefly lived in ElDorado, Kansas, then returned to Emporia, where he spent the rest of his life. So his migration map - and opportunity to encounter my ancestor - was pretty limited to Emporia and/or El Dorado.

## William Allen White, continued

The Emporia *Gazette*, according to the [Kansas State Historical Society](http://www.kshs.org) (www.kshs.org), was published from 1890 to 1900. Mr. White purchased the Emporia *Gazette* in 1895 and owned it for the next five years. (This would prove to be the critical piece of information in resolving the legend.) Beyond the information found in Wikipedia, a quick search on [Ancestry](http://www.ancestry.com), brought up many, many US and state census records, passport records and passenger records. Combined, these records painted a pretty clear picture of a life primarily spent in Emporia, Kansas.

To the right are the highlights of Mr. White's migration map from these records - i, ii, iii, iv, v, vi, vii, viii, ix

William Allen White's Migration			
Date	Location	Source	Comments
1870	ElDorado, KS	1870 US Census <sup>1</sup>	
1880	ElDorado, KS	1880 US Census <sup>2</sup>	
1895 - 1900	Emporia, KS	Wikipedia <sup>3</sup>	Owner, Emporia Gazette
1905	Emporia, KS	1905 KS Census <sup>4</sup>	
1910	Emporia, KS	1910 US Census <sup>5</sup>	
1915	Emporia, KS	1915 KS Census <sup>6</sup>	
1918	Emporia, KS	Passport Application <sup>7</sup>	
1920	Emporia, KS	1920 US Census <sup>8</sup>	
1925	Emporia, KS	Passenger Log <sup>9</sup>	
1930	Emporia, KS	1930 US Census <sup>10</sup>	

### Step 4. Contrast the Timelines of the Two Men

Event	1888	1889	1890	1891	1892	1893	1894	1895	1896	1897	1898	1899	1900	1901	1902	1903	1904	1905
Emporia Gazette Published																		
William Allen White Buys Emporia Gazette																		
W.A. White owns Gazette																		
Frank marries in Atchison																		
Typesetter for Atchison Globe																		
Frank Lives in Atchison																		

The last step is simply to put the two timelines (left) together and compare and contrast. For Frank Watson to have worked for William Allen White, he would have had to do so at the Emporia *Ga-*

*zette*. Mr. White owned the *Gazette* from 1895 to 1940. At which time, Frank Watson was living in Atchison, married, and working for printing companies and at the Atchison *Globe*. Unless Frank Watson free-lanced, moonlighted, or worked on a special assignment for the Emporia *Gazette* while at in Atchison of which we have no evidence -- it is not probable that he worked for William Allen White. Further, Emporia and Atchison are 110 miles apart. The distance to travel makes the relationship less likely.

If you're wondering about the gap in the Frank Watson migration timeline between Atchison and Wichita that was a possible basis for this theory, the gap proved to be long after the time in which Mr. White owned the *Gazette*. In the end it didn't support the theory.

### What Do I Make of This?

Although I didn't prove the family legend to be true, I feel assured that my deduction was based on real historical facts, some sound analysis, and good, old fashioned genealogy sleuthing. Sure, I'm sorry I don't have the story to add to my tree, but Frank's story is good enough as it is. Each of our stories is good enough.

<sup>i</sup> "The 1870 United States Federal Census," *Ancestry.com* (Online: The Generations Network, Inc., 2009), <http://www.ancestry.com> [Digital copy of original records in the National Archives, Washington, D.C.], subscription database, accessed March 2012.

<sup>ii</sup> "Index to the 1880 United States Federal Census," *Ancestry.com* (Online: The Generations Network, Inc., 2009), <http://www.ancestry.com> [Digital copy of original records in the National Archives, Washington, D.C.], subscription database, accessed March 2012.

<sup>iii</sup> Wikipedia ([www.wikipedia.com](http://www.wikipedia.com)) William Allen White

<sup>iv</sup> Ancestry.com. 1905 *Kansas State Census Collection, 1855-1925* [database on-line]. Provo, UT, USA: Ancestry.com Operations Inc, 2009.

<sup>v</sup> "Index to the 1910 United States Federal Census," *Ancestry.com* (Online: The Generations Network, Inc., 2009), <http://www.ancestry.com> [Digital copy of original records in the National Archives, Washington, D.C.], subscription database, accessed {March 2012}.

<sup>vi</sup> Ancestry.com. 1915 *Kansas State Census Collection, 1855-1925* [database on-line]. Provo, UT, USA: Ancestry.com Operations Inc, 2009.

<sup>vii</sup> National Archives and Records Administration (NARA); Washington D.C.; *Passport Applications, January 2, 1906 - March 31, 1925*; Collection Number: ARC Identifier 583830 / MLR Number A1 534; NARA Series: M1490; Roll #: 650

<sup>viii</sup> "Index to the 1920 United States Federal Census," *Ancestry.com* (Online: The Generations Network, Inc., 2009), <http://www.ancestry.com> [Digital copy of original records in the National Archives, Washington, D.C.], subscription database, accessed {March 2012}.

<sup>ix</sup> *Passenger Lists of Vessels Arriving at New York, New York, 1820-1897* microfilm publication M237 (Washington, National Archives and Records Service

# NEW MATERIALS IN THE WICHITA PUBLIC LIBRARY

## GENEALOGY COLLECTION,

July through September 2012

Compiled by Michelle Enke

- 60th Jubilee, Flasher, North Dakota: 1902-1962.* (R 978.485 SIX)  
*1870 U.S. Census Index of LaRue Co., Kentucky.* (R 312 K37L 1870)  
*1907-2007 Akaska, South Dakota 100<sup>th</sup>.* (R 978.318 NIN)  
*1955 Golden Jubilee, Jud, North Dakota, June 24-25.* (R 978.453 NIN)  
*50th Anniversary, Carson, North Dakota, and Sister Cities of Leith, Brisbane, Lark, Raleigh and Thain District, 1910-1960.* (R 978.487 FIF)  
*Alfred, North Dakota, 1904-2004.* (R 978.453 ALF)  
*All the Way Back (2011 to 571 AD): Genealogy of Rogers Bruce Johnson and Margery Ruth Howe, by Rogers Bruce Johnson.* (R 929.2 JOHNSON)  
*Along the Trails of Yesterday: a Story of McIntosh County [North Dakota], by Nina Farley Wishek.* (R 978.455 WIS)  
*American Tapestry: the Story of Black, White, and Multiracial Ancestors of Michelle Obama, by Rachel L. Swarns.* (R 929.2 SWA)  
*Ancestral Lines : 206 Families in England, Wales, the Netherlands, Germany, New England, New York, New Jersey, and Pennsylvania : with Additional Ancestor Tables, by Carl Boyer.* (R 929.2 BOY)  
*Ancestral lines from Maine to Virginia: 57 families in England, Ireland, France, the Netherlands, Germany, the eastern seaboard, Ohio, Missouri, and California, by Carl Boyer.* (R 929.2 BOY)  
*Expansion of New England : the spread of New England settlement and institutions to the Mississippi River, 1620-1865, by Lois Kimball Mathews Rosenberry.* (R 974 ROS)  
*Ancestry of Catherine Middleton: Who Will Marry Prince William of Wales 29 April 2011, by William Addams Reitwiesner.* (R 941.085 REI)  
*Applications for Enrollment of Creek Newborn, Act of 1905, transcribed by Jeff Bowen.* (R 970.004 BOW V. 2-5, 7-10)  
*Artas, [South Dakota] 1901-1976.* (R 978.317 ART)  
*Ashley Diamond Jubilee, Ashley, North Dakota: 75 years of progress: June 19-20-21, 1963, 1888-1963.* (R 978.455 ASH)  
*Ashley's Golden Jubilee, 1888-1938 [North Dakota].* (R 978.455 ASH)  
*As We Reminisce: Souvenir Memory Book [Strasburg, North Dakota].* (R 978.478 AS)  
*Barack Obama's Family Tree: Roots of Achievement.* (R 929 OBAMA)  
*Beulah, N.D. 1914-1989.* (R 978.483 BEU)  
*Braddock, N.D. 1884-1984.* (R 978.478 BRA)  
*Catholic Germans from Russia (Krasna, Bessarabia, Russia) in South-Central North Dakota, 1890-1990, Statistical Compendium, by Ted J. Becker.* (R 978.4 BEC)  
*Celebrating our Heritage: 1884-Napoleon, ND-2009: Quasquicentennial.* (R 978.456 CEL)  
*Centennial Anniversary Book : Eureka, South Dakota, 1887-1987: Second Fifty Years.* (R 978.316 CEN)  
*Centennial Memories, 1900-2000: Java, South Dakota.* (R 978.318 CEN)  
*Centennial of St. Andrew's Catholic Church, Zeeland, North Dakota and the spiritual heritage of St. John's Catholic Church, rural McIntosh County, North Dakota, by Andrew Jasinski.* (R 978.455 JAS)  
*Century of memories : Mound City, South Dakota, 1884-1984.* (R 978.317 CEN)  
*Church book I : Evangelical Lutheran Hoffnungs Gemeinde, 1904-1944, compiled by Orion A. Rudolph.* (R 978.455 RUD)

## New WPL Materials, continued

- Church book II : Evangelical Lutheran Friedens Gemeinde (Peace Lutheran) (also known as the Sachmanns Gemeinde) (also known as the Schumacher Church), 1894-1965*, compiled by Orion A. Rudolph. (R 978.455 RUD)
- Civil War in Kansas : ten years in turmoil*, by Debra Goodrich Bisel. (R 978.103 BIS)
- Common law marriages, 1866-1876 : colored, marriages, 1866-1913, colored*, by Larue County [Kentucky] Genealogy Society. (R 976.9713 HEA)
- Courtenay, 1887-1987 [North Dakota]*. (R 978.452 COU)
- Creating family Web sites for dummies*, by Janine Warner. (R 929.2 WAR)
- Danzig, North Dakota (1906-2000): "Gone but Not Forgotten"*. (R 978.455 DAN)
- David Crady, Kentucky pioneer*, by Evelyn Crady Adams. (R 929.2 CRADY)
- Descendants of Betfield Sawyer of Hill, N.H. : continuation of the work of Roland Douglas Sawyer*, by Jay Norwalk. (R 929.2 SAWYER)
- Descendants of John McGonigle : immigrant from Ireland*, by Leallah Franklin. (R 929.2 MCGONEGLE)
- Descendants of the Barths of Weislingen and Frohmühl, Alsace*, by Jay Norwalk. (R 929.2 BARTH)
- Detailed reports on the Salzburger emigrants who settled in America*, by George Fenwick Jones and Renate Wilson. (R 975.8 DET V.1)
- Dill family of Dillsburg and Dilltown, Pennsylvania : and related genealogies of the Conrad, Matter, Hays, King, Steinmeyer, Maneely, Calderwood, Barclay, Cole, Strayhorn, Gibson, and Ross families*, by Jay Norwalk. (R 929.2 DILL)
- Elgin, North Dakota : 75th diamond jubilee, 1910-1985*. (R 978.487 ELG)
- Elgin, North Dakota Centennial : celebrating the past embracing the future, 1910-2010*. (R 978.487 GRA)
- Family maps of Allamakee County, Iowa*, by Gregory A. Boyd. (R 977.733 BOY)
- Family maps of Barbour County, Alabama*, by Gregory A. Boyd. (R 976.132 BOY)
- Family maps of Bates County, Missouri*, by Gregory A. Boyd. (R 977.843 BOY)
- Family maps of Beauregard Parish, Louisiana*, by Gregory A. Boyd. (R 976.359 BOY)
- Family maps of Berrien County, Michigan*, by Gregory A. Boyd. (R 977.411 BOY)
- Family maps of Boone County, Arkansas*, by Gregory A. Boyd. (R 976.718 BOY)
- Family maps of Boone County, Indiana*, Gregory A. Boyd. (R 977.254 BOY)
- Family maps of Bossier Parish, Louisiana*, Gregory A. Boyd. (R 976.397 BOY)
- Family maps of De Baca County, New Mexico*, Gregory A. Boyd. (R 978.944 BOY)
- Family maps of Douglas County, Washington*, Gregory A. Boyd. (R 979.731 BOY)
- Family maps of Eaton County, Michigan*, by Gregory A. Boyd. (R 977.423 BOY)
- Family maps of Edwards County, Illinois*, by Gregory A. Boyd. (R 977.3791 BOY)
- Family maps of Effingham County, Illinois*, by Gregory A. Boyd. (R 977.3796 BOY)
- Family maps of Gogebic County, Michigan*, by Gregory A. Boyd. (R 977.4983 BOY)
- Family maps of Lauderdale County, Alabama*, by Gregory A. Boyd. (R 976.199 BOY)
- Family maps of Linn County, Missouri*, by Gregory A. Boyd. (R 977.824 BOY)
- Family maps of Madison County, Arkansas*, by Gregory A. Boyd. (R 976.715 BOY)
- Family maps of Marquette County, Michigan*, by Gregory A. Boyd. (R 977.496 BOY)
- Family maps of Newton County, Arkansas*, Gregory A. Boyd. (R 976.716 BOY)
- Family maps of Pennington County, Minnesota*, by Gregory A. Boyd. (R 977.6965 BOY)
- Family maps of Pike County, Alabama*, by Gregory A. Boyd. (R 976.135 BOY)
- Family maps of Pope County, Minnesota*, by Gregory A. Boyd. (R 977.646 BOY)
- Family maps of Poweshiek County, Iowa*, by Gregory A. Boyd. (R 977.7596 BOY)
- Family maps of Red Lake County, Minnesota*, by Gregory A. Boyd. (R 977.6963 BOY)
- Family maps of Ringgold County, Iowa*, by Gregory A. Boyd. (R 977.7873 BOY)
- Family maps of Sangamon County, Illinois*, by Gregory A. Boyd. (R 977.356 BOY)
- Family maps of Tangipahoa Parish, Louisiana*, by Gregory A. Boyd. (R 976.313 BOY)
- Family maps of Van Buren County, Arkansas*, by Gregory A. Boyd. (R 976.729 BOY)

- Family maps of Vermilion County, Illinois*, by Gregory A. Boyd. (R 977.365 BOY)
- Family maps of Vigo County, Indiana*, by Gregory A. Boyd. (R 977.245 BOY)
- Family maps of Warren County, Indiana*, by Gregory A. Boyd. (R 977.296 BOY)
- Family maps of Winneshiek County, Iowa*, by Gregory A. Boyd. (R 977.732 BOY)
- Flasher centennial history book 1902-2002*. (R 978.485 FLA)
- Fredonia diamond jubilee, 1904-1979 : 75 years of prosperity*. (R 978.456 FRE)
- Fredonia golden jubilee, 1904-1954*. (R 978.456 FRE)
- Fredonia will shine once more in 2004 : Fredonia centennial, 1904-2004*. (R 978.456 FRE)
- Gargiulo families of 17th century Sorrento, and some descendants : a study of a prominent community in the 17th & 18th centuries, including photographs of 250 church records*, by Jay Norwalk and Angela Federico. (R 929.2 GARGIULO)
- Gargiulo family of Capri : and related genealogies of the Vuotto, Lembo, and DeMartino families*, by Jay Norwalk. (R 929.2 GARGIULO)
- Gazing forward, glancing back, remembering always : memories retold and relived by the community of Street-er, North Dakota*, by Sandi DeWald. (R 978.452 DEW)
- Genealogist's handbook for New England research*, by New England Historical Genealogical Society. (R 929.1 GEN)
- Glen Ullin yesteryears : a community built on dreams 1883-striving for the future-1983*. (R 978.485 GLE)
- Golden jubilee : Gackle [North Dakota], 1904-1954*. (R 978.456 GOL)
- Great migration: immigrants to New England, 1634-1635*, by Robert Charles Anderson. (R 974 AND V. 6 & 7)
- Growing with pride : the Harvey, N.D. area... her history... her people*. (R 978.458 GRO)
- Guide to Massachusetts Cemeteries*, by David Allen Lambert. (R 974.4 LAM)
- Guide to Published Genealogies in the Library of the New England Historic Genealogical Society*. (R 016.929 GUI)
- Guide to diaries in the R. Stanton Avery special collections*. (R 929.1 GUI)
- Hague [ND] area book II : the past 100 years and its people*, by Katie Glatt Wald. (R 978.478 WAL)
- Hague, North Dakota centennial, 1908-2008*. (R 978.478 HAG)
- Hazen [North Dakota], 1913-1988*. (R 978.483 HAZ)
- Hebron [North Dakota], 1885-2010 : pioneered from the past, looking to the future*. (R 978.485 HEB)
- Hebron, our heritage : a history of the Hebron, North Dakota area*. (R 978.485 HEB)
- Herreid centennial history book, 1901-2001*. (R 978.317 HER)
- History of St. Mary's Catholic Church and the town of Hague, North Dakota*, by Katie Glatt Wald. (R 978.478 WAL)
- John Howland of the Mayflower*, by Elizabeth Pearson White. (R 929.2 HOWLAND V. 3 & 4)
- Manuscripts at the New England Historic Genealogical Society: R. Stanton Avery Special Collections*. (R 974 MAN)
- John Templeton of Iredell Co., N.C. : and related families of Handly, Marks, Folk, Pilcher, Colyar, Bate and Beall*, by Jay Norwalk. (R 929.2 TEMPELTON)
- Kief, North Dakota, 100 years of history*. (R 978.462 KIE)
- Kulm diamond jubilee : Kulm, North Dakota, June 26 & 27, 1967*. (R 978.453 KUL)
- Kulm, N. Dak. : 1892 to 1957*. (R 978.453 KUL)
- Larue County [Kentucky] early school census*. (R 976.9713 LAR)
- LaRue County [Kentucky] Historical Society bulletins*. (R 976.9713 LAR V. 1-2)
- Larue County [Kentucky] Historical bulletin's book I & II index*, by Carolyn Wimp. (R 976.9713 WIM)
- Larue County, Kentucky cemeteries*, by Edward Benningfield. (R 976.9713 BEN V.2)
- Larue County, Kentucky militia, 1860-1876*, by Carolyn Wimp. (R 976.9713 WIM)
- LaRue County, Kentucky tax records, 1843-1855*, by Carolyn Wimp. (R 976.9713 WIM)
- Lehr diamond jubilee, 1898-1973 [N.D.]*. (R 978.455 LEH)

## New WPL Materials, continued

- Lehr golden jubilee, 1898-1948* [N.D.]. (R 978.455 LEH)
- Leola centennial anniversary book, 1884-1984* [South Dakota]. (R 978.316 LEO)
- Lincoln days celebration, 1973-1974*, by Nancy B. Raine. (R 976.9713 RAI)
- Marriage bonds [LaRue County, KY]*, compiled by Charlotte Owens & Linda Salsman. (R 976.9713 OWE V.1-2)
- Mayflower families through five generations : descendants of the Pilgrims who landed at Plymouth, Mass., December 1620: Family of John Howland*, by Elizabeth Pearson White. (R 929.2 M4683 V.23 PT.2 )
- McIntosh County, 1884-1984 : Centennial June 22 & 23, 1984*, by Herbert Roth. (R 978.455 ROT)
- McLaughlin centennial : 100 years 2009, 3rd week of June, South Dakota*. (R 978.352 MAC L)
- McLaughlin golden jubilee, 1909-1959: a history of McLaughlin, South Dakota compiled in connection with the fiftieth anniversary celebration*. (R 978.352 MAC L)
- Medieval English ancestors of certain Americans: many of the English ancestral lines prior to 1300 of those colonial Americans with known royal ancestry*, by Carl Boyer. (R 929.72 BOY)
- Medieval Welsh ancestors of certain Americans: a comprehensive genealogy with biographical and historical background as well as critical commentary*, by Carl Boyer. (R 929.2 BOY)
- Military hand-book and soldier's manual of information: embracing the official articles of war ... together with a complete dictionary of military terms*, by Orville James Victor. (R 355 VIC)
- Moments to remember [Strasburg, N.D.]*. (R 978.478 MOM)
- Mound City, South Dakota, quasquicentennial, 1884-2009*. (R 978.317 MOU)
- Napoleon, N.D. Centennial, 1884-1984 : June 14-17*. (R 978.456 NAP)
- Paternal ancestry of Alexandra Leah Aschheim Feld: the genealogy of the Norwalk, Eilenberg, Heilperin, Gutman, and Kronenberg families of Ciechocinek and Suwalk, Poland*, by Jay Norwalk. (R 929.2 NORWALK)
- Old newspaper's obituaries [LaRue County, KY]*, compiled by Nancy B. Raine. (R 976.9713 RAI V. 1-2)
- Pioneer footprints : June 12, 13, 14 Diamond Jubilee, Java, South Dakota, 1900-1975*. (R 978.318 PIO)
- Pioneers : the frontier family of Barack Obama*, by Stephen MacDonogh. (R 973.932 MAC D)
- Prairies & people : 1904-2004, Gackle, ND*. (R 978.456 PRA)
- Read Family of Salem, Massachusetts*, by Richard H. Benson. (R 929.2 REED)
- Rotunda [Southern Methodist University yearbook]*. (R 378.781 ROT 1968)
- Sacramental Records of the Roman Catholic Church of the Archdiocese of New Orleans*, by Earl C. Woods and Charles E. Nolan. (R 976.335 WOO V.1)
- Salvo Family of Sant'Agata di Militello, Sicily*, by Jay Norwalk. (R 929.2 SALVO)
- Settlers of the Beekman Patent, Dutchess County, New York: an Historical and Genealogical Study of all the 18th Century Settlers in the Patent*, by Frank J. Doherty. (R 974.733 DOH V. 9 & 10)
- Stamford [Connecticut] Town Records*. (R 974.6 STA)
- State, County and International Records on Microform (excluding Missouri) [Midwest Genealogy Center]*. (R 016.929 STA)
- Strangers and Pilgrims, Travellers and Sojourners: Leiden and the Foundations of Plymouth Plantation*, by Jeremy Dupertuis Bangs, General Society of Mayflower Descendants. (R 284 BAN)
- Student's Guide to African American Genealogy*, by Anne E. Johnson. (R 929.1 JOH)
- Student's Guide to Chinese American Genealogy*, by Colleen She. (R 929.1 SHE)
- Student's Guide to Japanese American Genealogy*, by Yoji Yamaguchi. (R 929.1 YAM)
- Texas land survey maps for Caldwell County*, by Gregory A. Boyd. (R 976.433 BOY)
- Texas land survey maps for Grayson County*, by Gregory A. Boyd. (R 976.4557 BOY)
- Texas land survey maps for Mason County*, by Gregory A. Boyd. (R 976.466 BOY)
- Who's who in the Midwest*. (R 920.077 W62 2012)





# MARRIAGE RECORDS



Sedgwick County, KS, Book L

<u>Page</u>	<u>Groom/Bride</u>	<u>Residence</u>	<u>Age</u>	<u>Appl. Date</u>	<u>Marriage Date</u>
L401	Noble, Edward Tyler	Wichita, KS	26		
	Mills, Nellie Bell	Wichita, KS	20	13 May	13 May 1908
L401	Shepherd, Christopher	Wichita, KS	38		
	Stephenson, Isabella	Wichita, KS	33	13 May	14 May 1908
L402	Harvey, Charley(es)	Alva, OK	20		
	Osburn, Rosie	Flagg, OK	16	16 May	16 May 1908
L402	Hilbert, L.C.	Wichita, KS	28		
	Kelly(ley), Etta	Wichita, KS	23	14 May	14 May 1908
L403	Mingel, Forest	Louisville, KY	25		
	Hoath, Mary Ellen	Wichita, KS	24	19 May	18 May 1908
L403	Smith, Frank F.	Wichita, KS	21		
	McVay, Mary A.	Udall, KS	21	16 May	16 May 1908
L404	Bain, James W.	Uncas, OK	58		
	Pope, Jennie V.	Peabody, KS	42	18 May	18 May 1908
L404	Kern, William	Frederick, KS	26		
	Maxwell, Jennie	Frederick, KS	32	19 May	19 May 1908
L405	Bestgen, John W.	Andale, KS	20		
	Fultz, Edna L.	Mt. Hope, KS	18	19 May	24 May 1908
L405	Heckard, Harvey L.	Kiowa, KS	28		
	Mitchel, Ollie	Kiowa, KS	24	19 May	19 May 1908
L406	Linn, Harry D.	Marion, KS	41		
	Wesley, Marie	Canada, KS	18	20 May	20 May 1908
L406	Winter, Joseph E.	Ashland, KS	40		
	Lemon(ns), Maud	Ashland, KS	30	20 May	20 May 1908
L407	Myers, Clarence Arthur	Wichita, KS	27		
	Janson, Maud Cordella	Wichita, KS	26	20 May	20 May 1908
L407	Rhodes, H.I.	Wichita, KS	29		
	Maddox, Ethyl(hel)	Leon, KS	16	21 May	21 May 1908
L408	Hammond, Irvin P.	Kansas City, MO	25		
	Shreve, Elva	Augusta, KS	28	21 May	21 May 1908
L408	Miller, N.U.	Oklahoma City, OK	37		
	Long, Ada	Cumberland, WI	21	21 May	21 May 1908
L409	Sedam, Burton Marion	Rolla, MO	24		
	Ryan, Olive	Attica, KS	18	23 May	23 May 1908
L409	Wallace, Reece	Granite, OK	21		
	Howell, Myrtle	Cedarville, KS	18	23 May	24 May 1908
L410	Kendall, Clarence C.	Wichita, KS	24		
	Young, Lorette	Frederick, OK	22	23 May	23 May 1908
L410	Leffer, William R.	Plains, KS	55		
	Wigington, Carrie E.	Belle Plaine, KS	30	23 May	24 May 1908
L411	Pechin, Lester	Wichita, KS	21		
	Foster, Nannie	Wichita, KS	21	23 May	01 Jun 1908
L411	Stevson, Joseph	Wichita, KS	34		
	Scott, Bettie Annie	Wichita, KS	36	23 May	23 May 1908
L412	Root, Irwin L.	Wichita, KS	27		
	Marshall, Harriett Blanche	Conway Spgs, KS	23	25 May	26 May 1908

# Marriage Records, continued

<u>Page</u>	<u>Groom/Bride</u>	<u>Residence</u>	<u>Age</u>	<u>Appl. Date</u>	<u>Marriage Date</u>
L412	Shilkett, Roscoe	Pueblo, CO	25		
	Ainsworth, Myrtle	Lyons, KS	20	25 May	25 May 1908
L413	Doran, Paul	Wichita, KS	19		
	Stiers, Fay	Yates Center, KS	19	26 May	29 May 1908
L413	Taylor, C.R.	Viola, KS	26		
	Risley, Grace M.	Viola, KS	26	26 May	27 May 1908
L414	Armstrong, James C.	Benton, KS	23		
	Riddell, Sadie	Wichita, KS	19	27 May	27 May 1908
L414	Black, J.B.	Geneseo, KS	35		
	Rarrick(Rerrick), Marie G.	Maudin, OK	27	27 May	27 May 1908
L415	Braman, Walter	Wichita, KS	23		
	Riley, Minnie	Maize, KS	18	28 May	28 May 1908
L415	Jones, Harry	Hutchinson, KS	38		
	Reinbold, Emma	Salina, KS	28	28 May	28 May 1908
L416	Hiner, Elbert B.	Wichita, KS	27		
	Seeman, Mae	Wichita, KS	23	01 Jun	01 Jun 1908
L416	Stanley, Robert O.	Wichita, KS	41		
	Ferrell, Mildred	Wichita, KS	39	29 May	29 May 1908
L417	Garrison, H.D.	Oklahoma City, OK	27		
	Hutchinson, Nettie E.	Hutchinson, KS	26	01 Jun	01 Jun 1908
L417	McBride, Asbury(rry)	Wichita, KS	33		
	Green, Ella	Wichita, KS	25	01 Jun	01 Jun 1908
L418	Gard, Ernest A.	Anthony, KS	21		
	Traylor, Lucy	Emporia, KS	19	02 Jun	02 Jun 1908
L418	Linville, Orvill(le)	Pond Creek, OK	22		
	Thompson, Armyn	Pond Creek, OK	21	01 Jun	01 Jun 1908
L419	Barrett, Theron Vinton	Wichita, KS	31		
	Whitney, Charlotte	Sodus, NY	25	02 Jun	03 Jun 1908
L419	Pemberton, John H.	Belpre, KS	27		
	Radtke, Ida	Valley Center, KS	19	02 Jun	02 Jun 1908
L420	Benson, Augustus Charley	Ottawa, KS	22		
	Hill, Ella	Wichita, KS	24	02 Jun	02 Jun 1908
L420	Villalobos(odos), Priceliano	Wichita, KS	40		
	Moreno, Cladia	Wichita, KS	30	02 Jun	02 Jun 1908
L421	Brown, George A.	Mead Center, KS	22		
	Branson, Maggie May	Wichita, KS	22	03 Jun	03 Jun 1908
L421	Plowman, Frank T.	Oklahoma City, OK	26		
	Bergman, Osie V.	Wichita, KS	23	03 Jun	03 Jun 1908
L422	Harding, Hugh J.	Dayton, OH	22		
	Cunningham, Iva	Topeka, KS	18	03 Jun	03 Jun 1908
L422	Sanders, John Edwin	Whitewater, KS	20		
	Kinsey, Lulu May	Whitewater, KS	19	03 Jun	03 Jun 1908
L423	Daisy, George W.S.	Wichita, KS	28		
	Hamilton, Elizabeth	Wichita, KS	28	04 Jun	04 Jun 1908
L423	Rissell, Ralph L.	Wichita, KS	22		
	Cornwell, Margaret E.	Wichita, KS	19	04 Jun	04 Jun 1908
L424	Guinn, Almon	Tecumseh, OK	26		
	Ivey, Bessie	Tecumseh, OK	18	05 Jun	08 Jun 1908
L424	Lomax, George	Wichita, KS	32		
	Yaw, May	Wichita, KS	22	06 Jun	06 Jun 1908
L425	Brown, J. Hay	Winfield, KS	25		
	Owens, Margaret	Eureka, KS	21	06 Jun	06 Jun 1908

**Marriage Records, conntinued**

<u>Page</u>	<u>Groom/Bride</u>	<u>Residence</u>	<u>Age</u>	<u>Appl. Date</u>	<u>Marriage Date</u>
L425	Meats, J. Frank	Gotebo, OK	47		
	Comes, Hattie(arriet) Ethelyn	Burrton, KS	26	08 Jun	08 Jun 1908
L426	Burdic(ck), Myrl	Wichita, KS	21		
	Stowel(ll), Mary N.	Buhler, KS	21	08 Jun	10 Jun 1908
L426	Nickey, John	Renfrow, OK	21		
	Ragland, Ettoulia	Wichita, KS	22	08 Jun	08 Jun 1908
L427	Reece, Mevel W.	Goddard, KS	22		
	White, Mossey(sie) L.	Goddard, KS	19	09 Jun	09 Jun 1908
L427	Terbush, Henry	Wichita, KS	32		
	Hereford, Alberta O.	Wichita, KS	30	08 Jun	18 Jun 1908
L428	Blandy, Charles	Yates Center, KS	23		
	Spicer, Elizabeth	Carthage, MO	19	09 Jun	09 Jun 1908
L428	Renner, George W.	Cunningham, KS	30		
	Hesse, Mary G.	Garden Plain, KS	23	09 Jun	10 Jun 1908
L429	Hawkins, David	Leon, KS	36		
	Losh, Sarah	Leon, KS	46	09 Jun	09 Jun 1908
L429	Kendall, Guy M.	Englewood, KS	30		
	Stewart, Anna	Englewood, KS	20	09 Jun	09 Jun 1908
L430	Long, Edgar H.	Cunningham, KS	32		
	Maynard, Mamie	Wichita, KS	32	10 Jun	10 Jun 1908
L430	Startzman, Henry H.	Wichita, KS	25		
	Startzman, Ethel E.	Wichita, KS	24	09 Jun	09 Jun 1908
L431	Eames, Harry T.	Arkansas City, KS	24		
	Williams, Josephine	Wichita, KS	22	10 Jun	10 Jun 1908
L431	Harwi, Warren Alfred	Atchison, KS	26		
	Ludlum, Corine Louise	Wichita, KS	20	10 Jun	10 Jun 1908
L432	Bowdish, Gordon Stone	Wichita, KS	21		
	Warren, Claudine T.	Wichita, KS	21	10 Jun	10 Jun 1908
L432	Sloan, Samuel F.	Fairview, OK	32		
	Martin, Mary Elizabeth	Albany, NY	24	10 Jun	11 Jun 1908
L433	Cline, B.M.	Whitewater, KS	35		
	Hall, Sophia M.	Winfield, KS	30	10 Jun	10 Jun 1908
L433	Fordham, Frank F.	Wichita, KS	21		
	Trobaugh, Addie Mertle	Wichita, KS	19	10 Jun	10 Jun 1908
L434	Hamilton, Robert John	Wichita, KS	23		
	Koontz, Grace Vivian	Wichita, KS	22	10 Jun	10 Jun 1908
L434	Sager, Arthur L.	Wichita, KS	30		
	Melton(Milton), Nora B.	Wichita, KS	33	10 Jun	10 Jun 1908
L435	Alford, Charles C.	Mt. Hope, KS	22		
	Baldwin, Massie E.	Mt. Hope, KS	22	11 Jun	14 Jun 1908
L435	Stokes, John Wesley	Wichita, KS	26		
	Baker, Mabel Jeanette	Wichita, KS	20	10 Jun	10 Jun 1908
L436	Burgess, Alexander	Leon, KS	38		
	Owens, Adah	Tipton, IA	20	13 Jun	13 Jun 1908
L436	Tammany, David S.	Bayneville, KS	33		
	Dunn, Alice M.	Schulte, KS	24	11 Jun	11 Jun 1908
L437	McCormick, David F.	Mt. Hope, KS	56		
	Baldwin, Mary A. (E.)	Mt. Hope, KS	41	13 Jun	14 Jun 1908
L437	Sloan, T.E.	Kiowa, KS	22		
	McNeil, Maye(ary) H.	Nortonville, KS	22	13 Jun	17 Jun 1908
L438	Belt, William B.	Wichita, KS	27		
	Rue, Ethel L.	Wichita, KS	17	16 Jun	17 Jun 1908

# Marriage Records, continued

<u>Page</u>	<u>Groom/Bride</u>	<u>Residence</u>	<u>Age</u>	<u>Appl. Date</u>	<u>Marriage Date</u>
L438	Grabendike, Frank W. Christopher, Nellie B.	Chicago, IL Wichita, KS	22 22	16 Jun	17 Jun 1908
L439	Bearden, David B. Sawin, Grace M.	Wichita, KS Wichita, KS	22 22	16 Jun	16 Jun 1908
L439	Harris, Thomas Otto Woodford, Etta May Belle	Artesia, NM Wichita, KS	22 19	16 Jun	16 Jun 1908
L440	Buchanan, Francis M. Shell (Schell), Laura Pearl	Oklahoma City, OK Wichita, KS	25 23	17 Jun	17 Jun 1908
L440	Poole, Silas Frank Brock, Matilda Lucinda	Bradentown, F.A. Wichita, KS	33 37	16 Jun	16 Jun 1908
L441	Bannon, T.B. Carr, Anna (Hanna)	Rose Hill, KS Rose Hill, KS	26 29	17 Jun	18 Jun 1908
L441	Woodson, Ray C. Hockaday, Bonnie	Douglass, KS Douglass, KS	23 23	17 Jun	17 Jun 1908
L442	Mitchell, Harry E. Mackay, Elizabeth Zella	Douglass, KS Douglass, KS	20 23	17 Jun	17 Jun 1908
L442	Smith, Frank C. Figley, Alice L.	Wichita, KS Wichita, KS	23 21	17 Jun	17 Jun 1908
L443	McGovney, John Jones, Grace M.	Wichita, KS Wichita, KS	22 22	17 Jun	17 Jun 1908
L443	Thompson, James Milton Anderson, Martha May	Coffeyville, KS Mulvane, KS	28 19	17 Jun	18 Jun 1908
L444	Barnett, Edward A. Bomfield, Laura	Woodward, OK Woodward, OK	30 21	18 Jun	18 Jun 1908
L444	Drozd, Frank Adolph Schmidt, Clara May	Wichita, KS Medicine Ldge, KS	23 21	18 Jun	18 Jun 1908
L445	Lightner, Ralph E. Sherman, Retta E.	Wichita, KS Wichita, KS	23 22	19 Jun	21 Jun 1908
L445	Shultz, Oscar W. Sawer(wyer), Bertha E.	Wichita, KS Blackwell, OK	21 20	18 Jun	18 Jun 1908
L446	Pilliar, William Edward Hurst, Mabelle Charlotte	Wichita, KS Wichita, KS	26 24	19 Jun	20 Jun 1908
L446	Thomas, H. Marion Hutcheson, Ella	Topeka, KS Topeka, KS	23 20	20 Jun	21 Jun 1908
L447	Culver, William V. Little, Naomi W.	Fowler, KS Viola, KS	35 34	20 Jun	24 Jun 1908
L447	Troutman, George H. Phipps, Goldie	Belle Plaine, KS Belle Plaine, KS	26 20	20 Jun	20 Jun 1908
L448	Kimball, Walter Rice, Mamie	Wichita, KS Conway Spgs, KS	19 20	22 Jun	24 Jun 1908
L448	Smyth, Andrew Armstrong, Alice	Wichita, KS Wichita, KS	43 43	22 Jun	01 Jul 1908
L449	Langowsky (Longowsky), Jacob D. Finefrock, Margaret Pearl	Wichita, KS Wichita, KS Wichita, KS	33 25 25	23 Jun	24 Jul 1908
L449	Poenisch, Oliver F. Gise, Mabel	Bayneville, KS Bayneville, KS	25 18	23 Jun	23 Jul 1908
L450	Fort, Roscoe W. Rollman, Edna E.	Wichita, KS Wichita, KS	23 21	23 Jun	24 Jun 1908
L450	Hoff, Frank C. Springob, Anna	Wichita, KS Wichita, KS	24 23	23 Jun	24 Jun 1908



# **The Wichita Weekly Eagle**

## **Friday, 26 July 1872, page 3**

### **Column 1**

#### **CITY AND COUNTY NEWS.**

See several important legal notices this week.

The "dog days" have come, the maddest of the year.

See call for the Republican Central Committee of Sedgwick county.

A wind-mill has been put up at the water tank, near the depot.

Street Commissioner Pride is doing splendid work on Main street.

Watermelons have made their appearance in the Wichita market.

Capt. John Sebastian, of Emporia, was in the city on Wednesday.

An excursion of the leading citizens of Atchison will visit Wichita this week.

An interesting communication from Jos. G. McCoy was unavoidably crowded out.

The M. E. Church will hold service, morning and evening, next Sabbath, at the school house.

See account of organization and proceedings of the Wichita Republican Club in another column.

Mr. Ward, of Park City, is offering his entire stock of dry goods, etc., at cost, for cash, or will trade the same for stock.

The city council has purchased through J. G. Hope, a complete hook and ladder apparatus which will be on in a few days.

Col. Sumner, of Eldorado, asserted in town the other day that Butler county would go from 200 to 300 liberal. How is that, Mr. Times?

Col. W. S. Jenkins, the Register or the office of the Arkansas land district, arrived at Wichita yesterday, looking hale, hearty and happy.

Why is "Mozart's" harp so silent, its strings so long unwept by that skillful hand that was wont to send its tingling vibrations throughout this valley?

A vote was taken on the train going north from Wichita, last Saturday morning, which resulted in eighteen for Greeley and twenty-six for Grant.

Mr. Wood, a government trader at the Cheyenne agency, was in Wichita last week purchasing supplies. When he left the agency all was quiet.

A company of U. S. soldiers passed through Wichita yesterday evening enroute for Ft. Sill. They were accompanied by Kit. Carson, jr., U. S. Marshall.

The ruling prices for Texas cattle this week are, per head: Fat cows, \$13 to \$15; beef cattle, \$18 to \$24; yearlings, \$6; two year olds, \$10; stock cows, \$12.

J. M. Martin's little boy was bitten by Mrs. Washburn's dog, the other evening, quite severely. The city marshal happened to be around, and that dog will bite no more.

The Texas Hotel, opposite the Douglas Avenue House, will give a free lunch this evening. This is a new and comfortable house. Its advertisement will appear next week.

A new crosswalk has been laid across Main street, opposite the Syndicate. The enterprise was a private one, and mainly due to the energies of Messrs. Schattner & Short, we believe.

The negro - an account of the shooting of whom by another colored man was given last week - died from the effects of his wound last Sunday and was buried in the afternoon of the same day.

Pearce & Vantillburgh have purchased the livery stable in the upper town belonging heretofore to Mr. Smith, and are having it moved down to their lot on Third street, east of the Eagle office.

Last Saturday two or three articles of clothing, perforated with bullet holes, were found close to the water of the Big river, a little way above town. The discovery occasioned some little talk and conjecture.

Rouse and Lamb are opening up a large farm eighteen miles north of town, which they propose to stock up with select breeds of horses, cattle and hogs. They have now some as fine stock as could be obtained in Illinois.

The cattle season has now really opened, and buying and shipping is going on at a rapid rate. Thirty-five car loads were shipped on Monday, forty car loads on Tuesday, and about the same number yesterday and the day before.

Hon. J. R. Mead returned home this week from a trip to Topeka, where he had been on business. He represents the town as not over lively in anything save politics and railroads. The republicans are creating a mammoth wigwam at the capital.

The corn crop of this valley will simply be enormous. There are fields of sod corn within ten miles of Wichita that will not yield far from forty bushels to the acre. No doubt large numbers of cattle will be held over and fed here the coming winter.

J. W. Warren left at the office of the Southwestern land agency several specimens of iron ore which he picked up near Fort Larned. The ore resemble that of the Iron Mountain, of Missouri, and is at least eighty per cent. of pure iron, we should judge.

A brass band was organized in Wichita on last Tuesday evening. It is composed of the following gentlemen,

## Wichita Weekly Eagle, continued

which is guaranty enough of its success: Fred. Schattner, Schuman, Caldwell, Hubbard, Allen, Bromwell, 'Gene Schattner, Henry Hale and the three Grants.

James D. Bryden is engaged, and is well along with the work, in getting up a table which will show the exact number of cattle driven in this season, the kind, grade, where from, together with the owner's name and residence. These statistics will be valuable to cattle buyers.

The M. E. Church society of Wichita will commence immediately the erection of a church. The building will be 32x50 feet, with a sixteen-foot ceiling. The contract will be let to-morrow evening upon plans and specifications. The elevation presents a very neat and tasty design.

Col. Houston, U. S. Marshal for Kansas, spent a day or two last week in Wichita. He said, after all he had read of this valley and town, he had utterly failed in getting an adequate idea of the beauty and fertility of the one and of the stir and business of the other. So it is with everyone.

In another column will be found the advertisement of the Kilbourn Bros.' Burlingame Nursery. This is one of the finest and most extensive nurseries in the west, and the men who own it have devoted their lives to the growing of fruit. They are selling immense numbers of trees in the Arkansas valley.

It is said, by men who have tested it, that river sand makes a very fine, compact, and solid street grade, equal in every respect to McAdam, and in some respects superior. We do not know how this is, but with such accessible beds of sand as we have would it not be wisdom to give this sand business a test?

A fracas occurred at the dance house of Joseph Lowe, in West Wichita, on last Friday evening, in which a man by the name of Joseph Walters, who was at the time drunk, was badly bruised and cut about the face and head, by a revolver in the hands of the keeper of the house. Dr. Hendrickson dressed the man's wounds. From what we can learn Walters invited the attack by very disorderly conduct. At this writing the wounded man lies in a very critical condition.

### Column 2

The banking business of Wichita is becoming one of the prominent features of the place. The amount of capital now employed in that business here is not less than \$150,000 in stock, to say nothing of deposits and exchange on hand by the banks, or the money controlled by individuals for the purpose of loans. With the organization of the new bank last week Wichita now boasts three as solid banking institutions as can be found in any town in the state. The oldest bank of the town – in fact of the valley – is that of W. C. Woodman & Son, the

"First Arkansas Valley Bank." These gentlemen, as is well known, have, from the start, run a large and paying yet safe and reliable establishment. Their loans secured by real estate reach now many thousands of dollars, while in their exchange business we have yet to hear of the first complaint. The First National Bank of Wichita has an authorized capital of \$250,000, of which \$50,000 was paid up on the start. This institution enjoys the confidence of our people, also being controlled and managed by men of experience. The sworn statements made of the condition of the bank, in pursuance of a congressional law, have surprised old bankers in other portions of the state. The new bank organized last week starts out under the most favorable auspices, at the head of which stands A. M. Clark, of Leavenworth, one of the oldest bankers and most successful financiers of the state, and Sol. H. Kohn, one of Wichita's most substantial and thorough men. The cashier, A. A. Hyde, is also a gentleman of large experience in the business. The stock of the "Wichita Savings Bank" is principally held by our own men, including such names as English, Hope, Hobson, Greiffenstein and others. Of its ultimate success there is not the least doubt. The employment of so large an amount of capital in the banking business of Wichita portrays the solidity, prosperity and the confidence of our business men in the place in a stronger light than could any language. Money centres are always found at business centres, and *vice versa*. Business makes money, yet it is equally true that money makes business. And we think there need be no apprehension touching the success of all three, or even of an additional number of such institutions. No country ever filled up so rapidly as has the Arkansas valley, and nine-tenths of them come to stay. Large amounts of money must be used in the development of this valley outside of that employed in business. With plenty of money accessible at reasonable rates the Arkansas valley will in a very short time blossom and bloom with rich harvests, immeasurable in extent, while in the absence of plenty of money it will demand years of toil and painstaking. Besides, the more money invested, and the more monied men that can be interested here, the more sure will be the onward march of the town, the less liable and severe the "setback" so much dreaded by new places. In a word, a place cannot have too many substantial men interested in its growth.

The contract for the building of the First National Bank has been awarded to Mr. R. W. Fisk. Mr. Fisk is said to be a thorough master of the trade. The building will occupy the northeast corner of Main and First streets, at present the very center of business. It will cost between \$10,000 and \$11,000, and will be the finest structure of the kind south of the Kansas river, if not in the state, as its dimensions are 25x60, two stories high.

The banking floor will be elevated about four feet above the sidewalk, the basement will be thoroughly finished and surrounded with an excavated sidewalk of Florence flagging. The front of the building will be of iron and French plate glass, and the entrance will be in the corner. The foundation is of very heavy stone, resting on grouting of fine stone cemented with water lime. The base of the vault, which is twelve feet square, and a solid piece of masonry, starts below the basement and will be impenetrable and fire-proof. The front of the building will be exceedingly tasty and massive, built in the most approved style of architectural beauty.

Friends, show the EAGLE to your neighbors, and call their attention the amount of home and local news it contains, its neatly printed pages and the many good words of the Southwest that it weekly contains. We want to make it still better, that it may have a greater influence in helping to settle up and develop this great country, and to do this successfully we not only desire the continued and hearty support of Wichita's business and professional men, but we want at least a thousand more subscribers among the farmers of this and adjoining counties. No country paper was ever started in Kansas with the amount of home and miscellaneous news that is given by the EAGLE, and, consequently, our expenses almost frighten us at times, but confidence always returns when we take in in our mind's eye this vast country and its many people. Friends, don't forget your home paper while it is faithfully working for your material interests.

We have often been interrogated as to the name "Chisholm" which the pretty little stream that flows along the eastern confines of our city bears. It was named after or in honor of an old half-breed Cherokee trader, whose ranche or post was located at the crossing of this creek where the old cattle trail of the same name intersects it. Chisholm has been dead about four years, the immediate cause of his transit to the happy hunting grounds of his fathers being an attack of cholera morbus, superinduced by an overdose of bear's grease. True to his Indian instincts and appetites, he was taken with a "big hungry" for bear's oil, which was appeased after a two weeks hunt by his killing an old bruin and drinking over a quart of its oil, which gave him such a cramping belly-ache as to quench his vital spark and knock him out of time.

Not the least among the many things that indicated the great future of Wichita – that marks her position as one of importance – is the mail routes centering here. The mail matter for twenty-eight offices in the Southwest is made up at the Wichita office. In addition to the present routes starting from Wichita the department has given notice of the establishment of eight additional ones, the service upon three of which will be daily. One

of these new routes runs nearly four hundred miles south, reaching into Texas, and another goes to Fort Sill and the Cheyenne agency. The contracts for service upon the above routes will be awarded within a week or so. The daily stage coach is but the forerunner of the iron-horse, while it is none the less a sure indicator of the highways of travel and commerce.

Douglas avenue is destined, we suppose, to arrayed with solid blocks of buildings on either side from its intersection with Main street to the Big river bridge. This week we notice four new buildings going up on the ground above cited. Millis, Stem and Clogsden have well under way a business house 25x80 feet, the front being two stories high, just east of the Douglas Avenue House. Messrs. Abeel and Phillips have the lumber on the ground for two buildings, two story each, 21x50 feet. The buildings will be under one roof, with a hall and stairway between them. From drawings of the front elevation we should judge that they will add much to the appearance of the avenue. Mr. Woodberry has a foundation in for another building, just west of the one lately put up by him.

Last week in noticing the buildings erected here this spring we were unable to give the work of F. C. Martsolf. This week he furnishes the following list, including from April 1<sup>st</sup> to July 1<sup>st</sup>:

Douglas Avenue House – cost.....	\$11,088.00
M. E. parsonage .....	600.00
Wells, Fargo & Co., express office.....	950.00
Two offices for C. F. Pierce & Co.....	900.00
House for F. C. Martsolf.....	1,000.00
Repairing stable for Pearce & Vantillburgh .....	675.00
Job work .....	600.00
Total .....	\$15,813.00

Mr. Bare, of Decatur, Illinois, a friend of Peter Laux, purchased this week a half section of choice land southeast of town, upon which he will immediately erect good permanent buildings. Mr. B. is reported as a successful business man, and we give him a hearty welcome to this great county.

### Column 3

Rev. T. H. Dinsmore, A. M., acting president and professor of mathematics of the Highland University<sup>1</sup>, of Kansas, favored us with an interview on Monday. This university is situated in Doniphan county. It is under the auspices of the Presbyterian church, and is one of the oldest as well as most successful educational institutions in the state. The graduating class of the present year passed with honor to its individual members and the institution. Regular work of the university for the year 1872-3 begins Wednesday, September 4<sup>th</sup>. A high moral

<sup>1</sup> Now Highland Community College.

and religious influence pervades the community in which this institution is located, and we recommend it heartily to those of our citizens who may desire to send away their children to be educated.

T. S. Huffaker, one of the oldest citizens of Kansas, and who has for many years been identified with the Indian trade, was in town during two or three days of last week. He is at present maintaining trading posts at Pond creek and Red Fork in the Indian territory. As often as it is possible to communicate with us he will furnish the eagle, and through its columns our readers and the people of the state, accounts of the exact condition of Indian affairs, the threatened troubles, and other matters of interest pertaining to that country. Such communications - coming from such a source - from a man so well known and from one so familiar with all that pertains to the Indian question - will add still greater interest to our columns.

One Samuel Teats was arrested here on Saturday, by Marshal Mike Meagher, upon a telegram from the sheriff of Alleghany, Penn. Teats is charged with seduction, under a promise of marriage, which is a crime under the laws of Pennsylvania punishable by imprisonment in the penitentiary. We understand that Meagher had previously received a descriptive letter from the authorities in Alleghany, which enclosed a photograph, so there remains little room for mistakes. The reward offered for his arrest was \$1,000. Teats was taken before 'Squire Van Trees and in default of proper bail was committed to prison until such time as the Pennsylvania authorities can be heard from.

Mr. Fred. A. Sowers, who has been connected with the EAGLE office since its establishment, has purchased an interest in the *Vidette*, our contemporary. Such inducements were offered to him as made it to his interest to accept. As is known to many of our readers here at home, Mr. Sowers himself established that paper over two years ago. During his connection with this office we always found him a courteous, honorable and pleasant gentleman, and at all times laboring for the success of the leading paper of the Southwest. He takes with him our very best wishes for success in his new position and connections.

Ex-Senator E. G. Ross came down on a visit to this country last Wednesday. He is an old personal friend of the editor, and, barring his late political estrangement, one of the soundest men "in the business." Mr. Ross is publishing a paper at Coffeyville at present. We first made his acquaintance in 1856, at Topeka, where he was publishing the *Tribune* in a little building covered with straw and innocent of a floor. He is a quiet, unassuming, pleasant gentleman, who made his mark as a soldier, but kicked up a terrible breeze in the U. S. senate and in the

country by voting against the impeachment of Andy Johnson.

Chas. F. Gilbert, one of the leading, most enterprising and sagacious men of Wichita - as he is unpretentious and unassuming - left for his old home in Missouri, on Saturday last. Mr. G. is among the heaviest property holders of the city and valley, and always stands ready to aid with money and advice every enterprise that promises to be of material benefit to his adopted home. As to his moral and social standing, he needs no commendation at our hands. He will not be back for some time. We wish him a pleasant and successful trip.

Martin R. Clark has brought to our office some specimens of Surprise oats that are rightly names. The specimens he has left here would surprise the original discoverer of this famed oats. He also left corn stalks bent with the weight of their ears, some of the stalks measuring twelve feet. All grown on the sod.

A new building contractor came to town last week. He is at present turning his attention to the milk business. For particulars as to weight, etc., we would refer our city readers to Councilman Lindsay, who, in the course of time, contemplates taking the young Scotchman into partnership. Mother doing well.<sup>2</sup>

---

## MARRIED.

At M. R. Cordeiro & Co.'s hotel, July 22, by H. E. Van Trees, esq., Mr. E. A. Green and Mattie Loar, all of Sedgwick county.

---

Goodlander, Currie & Co., and Deland & Bacon, of Fort Scott, proprietors of two of the best flouring mills west of St. Louis, have opened a wholesale flour store on Main street, opposite First National bank, where they have the largest and choicest lot of flours ever brought to Wichita, which they are selling to dealers of this and adjoining towns at prices which challenge [sic] competition. These enterprising gentlemen are handling flour extensively, and intend making Wichita a permanent business point, and are deserving of the patronage of our merchants.

---

<sup>2</sup> Henry Hussey Lindsay was born 1 May 1835 in Scotland, died 10 September 1872 in Wichita, and is buried in Highland Cemetery. He married Annie L Hughes 9 September 1871 in Wichita. Annie was born 24 July 1850 in Adams County, Illinois; she later married Frank S. Jones (b. 12 Aug 1853, d. 3 Mar 1881, buried Highland Cemetery) on 25 February 1875 in Wichita. Annie died of heart disease 6 Dec 1889 in Wichita, and is buried in Highland Cemetery between her two husbands. Robert Harry Lindsay was born 13 July 1872, and, died 30 July 1958 in Vallejo, Solano County, California. Cyrus Dix was appointed his guardian after his mother's death.

NOTICE TO JUSTICES. – Each justice of the peace in Sedgwick county is requested to report to me the amount of money received from the proceeds of fines and estrays during the six months last past and belonging to the school fund of the county, and at the time of making said report promptly pay all of the said proceeds to the county treasurer, to be disbursed at the next ensuing semi-annual dividend.

WM. C. LITTLE,  
County Superintendent.

#### **Column 4**

#### **List of Letters**

Remaining in the postoffice at Wichita, Kansas, on the 24<sup>th</sup> of July:

#### **LADIES' LIST.**

Brady Nora C	Magee Sarah
Brit Ella	McKee Jane
Cooper Rosa	Magee S A
Comas Mary	Maberry Jane
Chambers Mary C	Norriss Susie P
Carponter Mrs Orville	Prenna Mrs E
Fox Mary	Pierson Fannie
Hannun Libbie	Pierson Miss H
Hope Jane	Pemnerruck Matilda
Gail Julia	Roeshey Miss
Johns L A	Rue Alice
Ketchum Harriett	Smith Anna 4
Lyons Fannie	Stewart Caroline
Lee Anna	Smith Nannie
Lee Mrs R A	Smith Helen
Marsfield Hattie	Wilson Nancy

#### **GENTLEMEN'S LIST.**

Anglin A	Jackson F C
Adams Thos	Jackson Martin B
Aikman John	Jack Emmons W
Atterberry Chas	Jarralds Thos
Adams Mark	Johnson L F 2
Allen Hiram	Johnson Matthew
Allen W G	Johnson S S
Beard Cyrus	Jackson John Haden
Brown Henry	Jedricks Arnel
Bull N W	Jennings W H
Benthusen G F	Kenedy W J
Barnes Chas P	King J C
Brink John L	Kress H C
Brown Albert	Knapp D S W
Brand Grypt	Kitchell Thos
Blood Gilman 2	King E M

Burris Geo	Kindel Albert
Brooman E J	Krobrits Gottfried
Bradford J D	Kain W J
Bennett Wm	Kellogg F E
Branch Clark	Kyle W J
Beard C Y	Lee Jabes
Buras Lenard	Lampman H
Blakroad D A	Longville James
Blake Harry 2	Lane Thomas
Best Geo	Light Morris
Burriss Wm	Lane Joseph 2
Brown Jas E	Latham Robert
Baker A G	Lane Abraham
Brown J W	Lane James
Burnes Chas	Lawler William
Berch Daniel	Little E C
Braunla Jas	Miller David H
Blevins Nathan	Mutler John F
Burk Chas	Martin Simon 2
Burgo Gulak G	March Charles H
Bates Chas L	Mason Thomas
Brant Wm A	Marshall Thomas F
Craig Chas	Monroe J B
Craig Geo D	Mefle J H 2
Carmichael H H 3	Moses Samuel
Clark B W	Mason Michael
Clark Geo W 2	Mund James
Cooney Arthur	Marks John
Curry W E	Martin Patrick
Coe Jesse	Mott Louis N
Cline Henry	Mitts Osbert
Canmel Wm	Merriam J A
Crawford Peter	Marks M M
Calts S B	McKetman Joseph
Colbank L G	McFadden M F 2
Clark W M	McCoy R E 2
Chaffee S S	McGuire A J 3
Crow Jonathan	McSwearingen John
Carter Willie J	McClure W W
Downy Edw	McPherson Gordon
Durham Ephriham	McKenan J M
Droyer John 2	McLaren Lee 2
Davis Tom R	McKee A A
Demott Wm	McVickar Arch
Duncan D	McDonald Filmore
Ewing E T 2	McBride James
Eman Willey	Neatherland L W
Emery E A	Noffisinger John B
Everts Isaac	Nevil Lewis

**Wichita Weekly Eagle, continued**

Emery M	Newhofer J
Ducan Henry	O'Donald Wm
Etkins Jas J	Onstott S P
Eddy F H 3	Quain Bernhard
Ellis R W	Robertson Wm R
Elliott Jesse	Ransom F W
Farrell John D	Ramsey A P
Frasier Budd	Ray William D
Foster John R 3	Routh J W
Foot H J	Ralph Jerome K
Foust G C	Ryland J A
Finley W J	Showalter John M
Feagan John B	Snyder J W
Frazier Wm	Scott W P J
Forsyth Jasper	Stubs Luther
Fuller Jas H	Streether & Co D D 2
Ford T A	Smith H H
Grimish E D 2	Smith Geo A
Ginnings J A	Sillsiy James
Gullett Thos S	Smith R F
Goodale G W 2	Smith W S
Gorman John	Sloan Wm
Graham Jerome M	Skinner J R
Goodwin Thos J	Spencer J S
Garrett Robert 2	Stacy Winchester
Gates J W	Sidles George G
Grevier J	Strecker Conrad
Green Thomas A 3	Sondder W W
Guttrra T W	Showver Jacob 2
Goodin R B 2	Snider A J
Greaver James	Sydal Frank
Grimer H C	Shepler A V
Green L B	Scoonover John

Harriston Jesse  
 Hasley Benjamin  
 Hinkly W S  
 Hall W S  
 Hughes E 2  
 Holstein Sim  
 Harvey E W  
 Halleig P W  
 Hughes Jas  
 Harrington John  
 Harnden Giles  
 Hurst William M 2  
 Hill A S 2  
 Howard A H 2  
 Hicks Wm H  
 House A A  
 Hedden James M  
 Hardin J W  
 Hamilton Francis 2  
 Haxhouse Edward M  
 Hayse W  
 Harden J W  
 Hubert P  
 Halkwerth G D  
 Jackson Wm L  
 Jackson George  
 Johnson Gullak  
 Johnson D A  
 Jarret Steven

Tuders Wm  
 Thriscan Antoine 2  
 Turner Henry  
 Thompson J R  
 Trish Alex  
 Taylor T E  
 Tucker Barton  
 Tenison J W 2  
 Taylor P M  
 Tirrell F C  
 Palmer A J  
 Plunkett Jesse  
 Paleet W H  
 Pride Clabe  
 Preston J H  
 Pray Frank 2  
 Prasse J W  
 Wharthy A V  
 Wright Sosiah  
 Wilson Young  
 Wallers J M  
 Wood N B B  
 Wilson Howard  
 Wheeler John M  
 Weideman T H  
 Williams James M  
 Willett Marshall  
 Willner Rudolf

Please say "advertised," and give date of date of [sic] list.  
 J. T. HOLMES, P.M.



# WICHITA HISTORICAL PANEL NO. 70

## Wichita's First Recorded Love Affair and Marriage

Miss Hannah Lewellen Accepts Proposal of Dashing  
Young U. S. Army Officer John Ward



(Wichita Historical Panel No. 70)

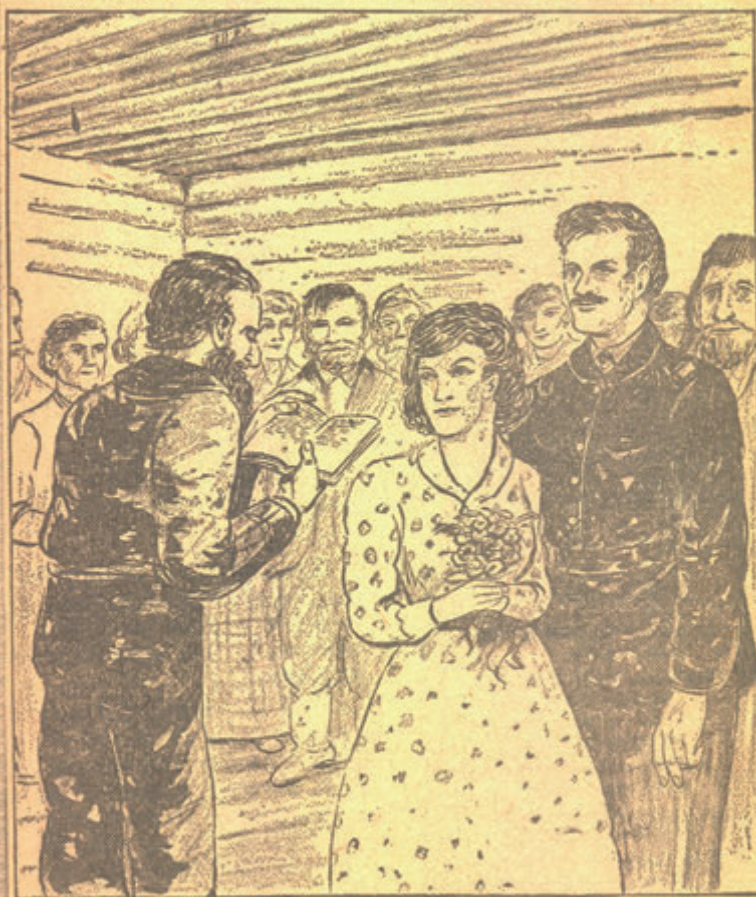
INDIAN maidens were courted on the present site of Wichita before the advent of the white man, possibly hundreds of them, but there is no record of such courtship or marriages, as there is of the first courtship of a white maiden. The girl was Miss Hannah Lewellen, the young man, Sergt. John Ward, a soldier in the Fifth United States Infantry company stationed here, and the year, 1868. Miss Lewellen clerked in her father's store here, the first one in the city, and there the young soldier paid his attentions to his future bride. Little is known about this earliest courtship, other than a recollection by relatives that it was encouraged by the bride's mother.

*Reprinted by permission of The Wichita Eagle*

# WICHITA HISTORICAL PANEL NO. 71

## First Wedding in Wichita Attended by Many Settlers

License Issued and Ceremony Performed by Buffalo  
Hunting Justice of Peace from El Dorado



(Wichita Historical Panel No. 71)

WICHITA'S FIRST WEDDING, that of the marriage of the 16-year-old daughter of Doc Lewellen, to Sergt. John Ward, soldier, stationed in Wichita, took place on Sunday, Sept. 6, 1863. It occurred a day ahead of schedule because the Justice of Peace Thomas, of El Dorado, was on a buffalo hunting trip and stopped by the Lewellen home a day before the date set. The justice volunteered to write out the license then and there and perform the ceremony. It is recorded that the bride wore a white dress with blue flowers in it and the bridegroom his blue uniform. The ceremony was held at the Lewellen home, as many friends as possible crowded in.

*Reprinted by permission of The Wichita Eagle*

# 18<sup>TH</sup> JUDICIAL DISTRICT PROBATE INDEX

Explanation of Column Headings	
<b>Case</b>	Number assigned to case
<b>Name</b>	Names of major parties involved; guardianships list each individual separately
<b>Date</b>	Earliest date found in file, not necessarily date case was originally filed
<b>Type</b>	D = Death G = Guardianship M = Miscellaneous, further described in Comments column
<b>Pages</b>	Approximate number of pages in case; if 10 or fewer receipts/canceled checks, included in page count, otherwise shown separately in Comments column
<b>Comments</b>	Any other type of pertinent information not appearing in other columns

Case	Name	Date	Type	Pgs	Comments
4126	Rick, Ann	7-Jan-1908	D	19	
4127	Holmes, Hazel	8-Jan-1908	G		See Holmes, Kyle
4127	Holmes, Kyle	8-Jan-1908	G	9	Also Holmes, Hazel
4128	Campbell, Burton H.	22-Jan-1908	D	88	Plus 257 receipts
4130	Shank, Fredericke	8-Feb-1908	D	6	
4131	Moore, Wilson H.	17-Feb-1908	D	29	
4133	Lamson, J.M.	14-Jan-1908	D	68	
4134	Kelley, Cornelius A.	17-Jan-1908	D	16	
4135	Meyer, Albert N.	18-Feb-1908	D	6	
4136	Porter, Frederick W.	16-Nov-1908	D	9	
4137	Coffman, A.M.	13-Jan-1908	D	53	Plus 21 receipts
4138	Henry, George C.	18-Jan-1908	D	32	Plus 30 receipts
4139	Sprague, Samuel	22-Jan-1908	D	32	Plus 24 receipts
4140	Osburn, Elva P.	22-Jan-1908	D	25	
4141	Findeiss, Frederick H.	25-Jan-1908	D	46	Plus 30 receipts
4143	Moore, Lesse C.	28-Jan-1908	D	14	
4144	Pullium, John T.	28-Jan-1908	D	30	Plus 123 receipts
4145	Rowlee, Floyd B.	29-Jan-1908	G	10	
4146	Menz, Fred	30-Jan-1908	D	42	Plus 14 receipts
4147	Downs, John H.	30-Jan-1908	D	16	Plus 1 receipt
4148	Fay, Franklin	31-Jan-1908	D	14	
4149	George, Bartholomew F.	20-Feb-1908	D	75	Plus 79 receipts
4150	Randall, T.H.	8-Feb-1908	D	30	Plus 4 receipts
4151	Bullinger, John M.	10-Feb-1908	D	53	Plus 104 receipts
4152	Wiske, Elizabeth A.	11-Feb-1908	G		See Wiske, William C.
4152	Wiske, Emma A.	11-Feb-1908	G		See Wiske, William C.
4152	Wiske, Fredrick J.	11-Feb-1908	G		See Wiske, William C.
4152	Wiske, Ida S.	11-Feb-1908	G		See Wiske, William C.

**Probate Index, continued**

<b>Case</b>	<b>Name</b>	<b>Date</b>	<b>Type</b>	<b>Pgs</b>	<b>Comments</b>
4152	Wiske, Martha E.	11-Feb-1908	G		See Wiske, William C.
4152	Wiske, Robert H.	11-Feb-1908	G		See Wiske, William C.
4152	Wiske, William C.	11-Feb-1908	G	55	Also Wiske: Fredrick J., Emma A., Robert H., Martha E., Elizabeth A., Ida S.
4153	Miltner, John B.	13-Feb-1908	D	134	Plus 76 receipts
4154	Stephens, Leslie	20-Feb-1908	D	43	Plus 30 receipts
4155	Fields, Henry	24-Feb-1908	D	46	Plus 11 receipts
4156	Daugherty, James V.	25-Feb-1908	D	89	Plus 12 receipts
4158	Amos, Hercy Whitfield	15-Feb-1908	G	14	
4159	Cone, George M.	2-Mar-1908	D	20	
4160	Hume, Levina	5-Mar-1908	D	46	Plus 17 receipts
4161	Hubbard, Peter R.	4-Mar-1908	D	6	
4162	Peck, Jonas O.	25-Mar-1908	D	9	
4163	Warfield, Pearl Myra	3-Mar-1908	D	18	
4164	Warfield, Bertha Ida	3-Mar-1908	G	73	Also Warfield, Ruby-May-- Plus 15 receipts
4164	Warfield, Ruby May	3-Mar-1908	G		See Warfield, Bertha Ida
4165	Good, Mary E.	22-Apr-1908	D	64	Plus 38 receipts
4166	Weinschenk, Xavier	30-Apr-1908	D	33	
4167	Tuders, William	13-Mar-1908	D	16	
4168	Nies, Ray	13-Mar-1908	G	29	
4169	Nelson, C.G. (Mrs.)	18-Mar-1908	D	21	
4170	Blair, George A.	18-Mar-1908	G		See Blair, James R.
4170	Blair, James R.	18-Mar-1908	G	33	Also Blair: William E., George A.
4170	Blair, William E.	18-Mar-1908	G		See Blair, James R.
4171	Blair, James	18-Mar-1908	D	11	
4172	McKee, Joseph C.	21-Apr-1908	D	29	
4173	Foster, Lyman Luther	30-Mar-1908	D	9	
4173 1/2	Grubb, Jacob A.	1-Apr-1908	D	17	
4174	Middlekauff, E.H.	6-Apr-1908	D	50	Plus 23 receipts
4175	Osborn, James C.	2-Apr-1908	D	15	
4177	Schack, Affie	9-Apr-1908	G	11	Also Schack: Ruth, Nellie
4177	Schack, Nellie	9-Apr-1908	G		See Schack, Affie
4177	Schack, Ruth	9-Apr-1908	G		See Schack, Affie
4178	Luttrell, James Percy	13-Apr-1908	G	35	
4179	Fleming, Samuel B.	16-Apr-1908	D	19	
4180	Wesson, Daniel B.	23-Apr-1908	D	37	
4181	Landis, Catherine	2-Sep-1908	D	11	
4183	Pratt, Wallace	29-Apr-1908	D	9	
4184	Pratt, Caroline Dudley	29-Apr-1908	D	11	
4185	Morse, Lucy A.	23-Oct-1909	D	24	
4186	Hadley, Edwin T.	1-May-1908	D	29	Plus 21 receipts

Case	Name	Date	Type	Pgs	Comments
4187	Noble, Lewis C.	4-May-1908	D	36	
4188	Sites, Agnes Celia	4-May-1908	G	13	Also Sites: Stephen Edward, George Curran
4188	Sites, George Curran	4-May-1908	G		See Sites, Agnes Celia
4188	Sites, Stephen Edward	4-May-1908	G		See Sites, Agnes Celia
4189	Click, Moses	5-May-1908	D	14	
4190	Caffrey, Joseph	8-May-1908	D	53	Plus 157 receipts
4192	Seltzer, Elizabeth	12-May-1908	D	50	
4193	Litson, William H.	14-May-1908	D	18	
4194	Dennett, Claude Robert	16-May-1908	G	38	
4195	McKee, William J.	18-May-1908	D	12	
4196	Morford, Charles G.	18-May-1908	D	23	
4197	Imhoff, Henry G.	19-May-1908	D	13	
4198	Coe, Elmore Frank	19-May-1908	D	39	
4199	Cook, Catharine	24-May-1909	D	14	
4200	White, Harry C.	15-May-1908	D	21	
4201	Putnam, Sarah C.D.	21-May-1908	D	23	
4202	Fabrique, Sarah P.	25-May-1908	D	8	
4203	Yergler, Jerry L.	25-May-1908	G		See Yergler, John F.
4203	Yergler, John F.	25-May-1908	G	24	Also Yergler: Jerry L., Vera O.
4203	Yergler, Vera O.	25-May-1908	G		See Yergler, John F.
4204	Gibbs, Louise	15-May-1908	D	19	
4205	Smith, Henry	28-May-1908	D	22	
4206	Dieter, J.P.	29-May-1908	D	24	
4207	Barrett, Morton	1-Jun-1908	G	17	
4208	Kistler, Lewis H.	4-Jun-1908	D	29	
4209	DeLong, Jesse	4-Jun-1908	D	37	
4210	Jones, Julia M.	4-Jun-1908	D	23	
4211	Jones, Philip A.	4-Jun-1908	G	12	
4212	Boyle, David	28-Apr-1910	D	38	Plus 73 receipts
4213	Burrows, Margaret E.	8-Jun-1908	D	10	
4214	Pinkerton, Donald	9-Jun-1908	G		See Pinkerton, Josephine
4214	Pinkerton, Helen	9-Jun-1908	G		See Pinkerton, Josephine
4214	Pinkerton, John W.	9-Jun-1908	G		See Pinkerton, Josephine
4214	Pinkerton, Josephine	9-Jun-1908	G	19	Also Pinkerton: Donald, Helen, John W.
4215	Faulkner, Francis C.	11-Jun-1908	D	14	
4216	Kenworthy, Jesse	17-Jul-1908	D	20	
4217	Faulkner, Dora S.	11-Jun-1908	G	47	
4218	Mans, Fred	12-Jun-1908	D	25	
4219	Mitchell, Sarah E.	13-Jun-1908	D	49	
4222	Stagner, John F.	23-Jun-1908	D	13	
4223	Forbes, Charles S.	26-Jun-1908	G	39	Also Forbes: Sylvia R., Royal F., Forrest C.

**Probate Index, continued**

<b>Case</b>	<b>Name</b>	<b>Date</b>	<b>Type</b>	<b>Pgs</b>	<b>Comments</b>
4223	Forbes, Forrest C.	26-Jun-1908	G		See Forbes, Charles S.
4223	Forbes, Royal F.	26-Jun-1908	G		See Forbes, Charles S.
4223	Forbes, Sylvia R.	26-Jun-1908	G		See Forbes, Charles S.
4224	Banta, Daniel C.	24-Jun-1908	D	9	
4225	Lehman, Isaac	27-Jun-1908	D	14	
4227	Cummings, Lawrence	15-Jul-1908	G	26	Also Cummings, Walter - Plus 44 receipts
4227	Cummings, Walter	15-Jul-1908	G		See Cummings, Lawrence
4228	Knights, Mary A.	30-Jun-1908	D	20	
4229	Stubbs, Angeline E.	2-Jul-1908	D	39	Plus 16 receipts
4230	Stofer, Charles D.	3-Jul-1908	D	11	
4231	Swarts, Griety Ketelaan	8-Jul-1908	D	32	
4232	Bruce, P.R.	13-Jul-1908	D	54	Plus 13 receipts
4233	Anderson, Mary L.	15-Jul-1908	D	51	Plus 11 receipts
4234	Gager, Mary H.	20-Jun-1908	D	56	Plus 24 receipts
4236	Moore, Albert C.	18-Jul-1908	D	57	Plus 56 receipts
4237	McComas, J.W.	21-Jul-1908	D	13	
4238	Musselman, Della Sadie	22-Apr-1908	G	35	
4239	Robinson, Benjamin	24-Jun-1908	D	23	
4240	McClintock, J.H.	6-Aug-1908	D	46	Plus 113 receipts
4241	Yike, Mary M.	13-Jun-1908	D	62	Plus 32 receipts
4242	Bosley, A.A.	4-Aug-1908	D	18	
4243	Frost, Ethel A.	18-Aug-1908	G	26	
4244	Garland, Margaret J.	5-Aug-1908	G	30	
4245	Klingman, Sam D.	7-Aug-1908	D	41	Plus 135 receipts
4246	Yergler, John F.	25-May-1908	D	25	
4248	Grandfield, Joseph	10-Aug-1908	D	39	Plus 24 receipts
4249	Mancourt, Mary Jane	13-Aug-1908	G	43	
4250	Walden, Venatta	15-Aug-1908	G	14	
4251	Cooper, -May-B.	11-Aug-1908	D	70	
4252	Brewer, Don	19-Aug-1908	G		See Brewer, Henry H.
4252	Brewer, Fay	19-Aug-1908	G		See Brewer, Henry H.
4252	Brewer, Guy	19-Aug-1908	G		See Brewer, Henry H.
4252	Brewer, Henry H.	19-Aug-1908	G	13	Also Brewer: Guy, Don, Fay
4253	Shaw, Emma W.	21-Aug-1908	D	21	
4254	Kibby, John W.	24-Aug-1908	D	35	Plus 54 receipts

**Copies of probate files may be purchased from MHGS by regular mail  
(MHGS, Attention: Probate File Assistant, PO Box 1121, Wichita, KS, 67201-1121),  
by phone (316-264-3611) when the library is open,  
or by email (mhgs1121@aol.com)**

# UPCOMING MHGS EVENTS

Call the MHGS Library at (316) 264-3611 to make your reservations for the following events and programs!

All events and programs will take place at the MHGS Library, 1203 N Main, unless otherwise noted.

All events and programs are free and open to the public.

A non-member access fee is collected for research in the MHGS library before or after the event/program.

*Please note that reservations are requested for all programs so seating can be prepared in the limited available space. Reservations are not required, but if all attendees cannot be seated those without reservations may be asked to leave.*

## GENEALOGY SEMINAR – Saturdays 1 PM to 2 PM – led by Donna Londeen

### Sessions will be held December 8 – January 12

These monthly genealogy forums will focus on attendees' level of needs and expertise. While this is not a structured class, handouts will be available. For those interested specifically in a software application, please bring your laptop and we will attempt to answer your question. While we are not experts in all applications, we have extensive background in several and can at least help you find the solution (especially if it is translating 'technicalees' into English!).

Remember to bring your information, resources, questions and answers!!! These are informal sessions. If there is enough specific interest, these seminars and workshops may be further identified for Beginner and Intermediate groups. For those who are more advanced, you may be able to 'show off' your expertise and provide 'on-the-spot' teaching!

## HISTORY SEMINAR – Saturdays 10 AM to Noon – led by Dan Anderson

### Sessions will be held December 15 – January 19

These history forums will focus on the inter-relationship between Community History, Family History and Genealogy. These are not structured classes, they are 'audience participation' sessions to help attendees:

- Understand the difference between Genealogy, Family History and Community History.
- Understand how these three disciplines/genres relate and support each other.
- Understand the need for sources and citations across each area.
- Prepare to move between Genealogy and History.
- Understand and appreciate Research Planning.

## PEER REVIEW – Saturdays 10 AM to Noon – led by Dan Anderson

### Sessions will be held December 22 – January 26

Bring something to share and discuss! Your work is important, not only to you but to all of us as a community! Share your insights, your frustrations and your successes! Or describe the 'wall' you've hit and the group can help you brainstorm it! Find and share resources, leads, and ideas. Great for historians and genealogists!

## SCANNING SATURDAY – Saturday, December 1 at

**Scanning Your Photos for Family and Gifts**, Sat. Nov. 3 & Dec. 1, 9am - 3:30pm, Midwest Historical & Genealogical Society Library, 1203 N. Main, Wichita. A perfect holiday gift idea, photos will be scanned in "jpeg" format. Bring a flash drive (preferred) or blank CD for the scanned photos, or purchase a CD from MHGS for \$1.

Cost: 15 cents for 300 dpi; 25 cents for 600 dpi for MHGS members; 20 cents 300 dpi; 30 cents for 600 dpi for non-members. Limited to 15 minutes per person; approx. 250 4x6 picts at 300 dpi can be made in this time. Allow more time for larger photos.

Pictures/Polaroids only (no negatives, slides, tin-types or other media); remove from albums/envelopes; copyrighted photos not allowed; present in order you wish scanned on your media. Sizes: 3x3 - 8x12 accepted.

# INDEX

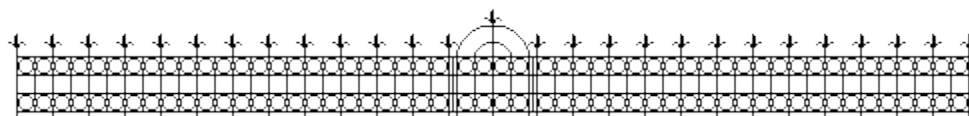
Abeel.....	81	Branch.....	83	Colbank.....	83
Adams.....	83	Brand.....	83	Comas.....	83
Aikman.....	83	Branson.....	76	Comes.....	77
Ainsworth.....	76	Brant.....	83	Cone.....	88
Alford.....	77	Braunla.....	83	Cook.....	89
Allen.....	80, 83	Brewer.....	90	Cooney.....	83
Amos.....	88	Brink.....	83	Cooper.....	83, 90
Anderson.....	78, 90	Brit.....	83	Cordeiro.....	82
Anglin.....	83	Brock.....	78	Cornwell.....	76
Armstrong.....	76, 78	Bromwell.....	80	Craig.....	83
Atterberry.....	83	Brooman.....	83	Crawford.....	83
Bacon.....	82	Brown.....	76, 83	Crow.....	83
Bain.....	75	Bruce.....	90	Culver.....	78
Baker.....	77, 83	Bryden.....	80	Cummings.....	90
Baldwin.....	77	Buchanan.....	78	Cunningham.....	76
Bannon.....	78	Bull.....	83	Currie.....	82
Banta.....	90	Bullinger.....	87	Curry.....	83
Bare.....	81	Buras.....	83	Daisy.....	76
Barnes.....	83	Burdic(ck).....	77	Daugherty.....	88
Barnett.....	78	Burgess.....	77	Davis.....	83
Barrett.....	76, 89	Burgo.....	83	Deland.....	82
Bates.....	83	Burk.....	83	DeLong.....	89
Beard.....	83	Burnes.....	83	Demott.....	83
Bearden.....	78	Burris.....	83	Dennett.....	89
Belt.....	77	Burriss.....	83	Dieter.....	89
Bennett.....	83	Burrows.....	89	Dinsmore.....	81
Benson.....	76	Caffrey.....	89	Dix.....	82
Benthusen.....	83	Caldwell.....	80	Doran.....	76
Berch.....	83	Calts.....	83	Downs.....	87
Bergman.....	76	Campbell.....	87	Downy.....	83
Best.....	83	Cammel.....	83	Droyer.....	83
Bestgen.....	75	Carmichael.....	83	Drozd.....	78
Black.....	76	Carponter.....	83	Ducan.....	84
Blaikroad.....	83	Carr.....	78	Duncan.....	83
Blair.....	88	Carson.....	79	Dunn.....	77
Blake.....	83	Carter.....	83	Durham.....	83
Blandy.....	77	Chaffee.....	83	Eames.....	77
Blevins.....	83	Chambers.....	83	Eddy.....	84
Blood.....	83	Chisholm.....	81	Elliott.....	84
Bomfield.....	78	Christopher.....	78	Ellis.....	84
Bosley.....	90	Clark.....	80, 82, 83	Eman.....	83
Bowdish.....	77	Click.....	89	Emery.....	83, 84
Boyle.....	89	Cline.....	77, 83	English.....	80
Bradford.....	83	Clogsden.....	81	Etkins.....	84
Brady.....	83	Coe.....	83, 89	Everts.....	83
Braman.....	76	Coffman.....	87	Ewing.....	83

Fabrique .....	89	Greaver.....	84	Hope.....	79, 80, 83
Farrell.....	84	Greeley.....	79	House.....	84
Faulkner.....	89	Green.....	76, 82, 84	Houston.....	80
Fay.....	87	Greiffenstein .....	80	Howard.....	84
Feagan.....	84	Grevier.....	84	Howell.....	75
Ferrell.....	76	Grimer.....	84	Hubbard.....	80, 88
Fields.....	88	Grimish.....	84	Hubert.....	84
Figley.....	78	Grubb.....	88	Huffaker.....	82
Findeiss.....	87	Guinn.....	76	Hughes.....	82, 84
Finefrock.....	78	Gullett.....	84	Hume.....	88
Finley.....	84	Guttrra.....	84	Hurst.....	78, 84
Fisk.....	80	Hadley.....	88	Hutcheson.....	78
Fleming.....	88	Hale.....	80	Hutchinson.....	76
Foot.....	84	Halkwerth.....	84	Hyde.....	80
Forbes.....	89, 90	Hall.....	77, 84	Imhoff.....	89
Ford.....	84	Halleig.....	84	Ivey.....	76
Fordham.....	77	Hamilton.....	76, 77, 84	Jack.....	83
Forsyth.....	84	Hammond.....	75	Jackson.....	83, 84
Fort.....	78	Hannun.....	83	Janson.....	75
Foster.....	75, 84, 88	Harden.....	84	Jarralds.....	83
Foust.....	84	Hardin.....	84	Jarret.....	84
Fox.....	83	Harding.....	76	Jedricks.....	83
Frasier.....	84	Harnden.....	84	Jenkins.....	79
Frazier.....	84	Harrington.....	84	Jennings.....	83
Frost.....	90	Harris.....	78	Johns.....	83
Fuller.....	84	Harriston.....	84	Johnson.....	83, 84
Fultz.....	75	Harvey.....	75, 84	Jones.....	76, 78, 82, 89
Gager.....	90	Harwi.....	77	Kain.....	83
Gail.....	83	Hasley.....	84	Kelley.....	87
Gard.....	76	Hawkins.....	77	Kellogg.....	83
Garland.....	90	Haxhouse.....	84	Kelly(ley).....	75
Garrett.....	84	Hayse.....	84	Kendall.....	75, 77
Garrison.....	76	Heckard.....	75	Kenedy.....	83
Gates.....	84	Hedden.....	84	Kenworthy.....	89
George.....	87	Hendrickson.....	80	Kern.....	75
Gibbs.....	89	Henry.....	87	Ketchum.....	83
Gilbert.....	82	Hereford.....	77	Kibby.....	90
Ginnings.....	84	Hesse.....	77	Kilbourn.....	80
Gise.....	78	Hicks.....	84	Kimball.....	78
Good.....	88	Hilbert.....	75	Kindel.....	83
Goodale.....	84	Hill.....	76, 84	King.....	83
Goodin.....	84	Hiner.....	76	Kinsey.....	76
Goodlander.....	82	Hinkly.....	84	Kistler.....	89
Goodwin.....	84	Hoath.....	75	Kitchell.....	83
Gorman.....	84	Hobson.....	80	Klingman.....	90
Grabendike.....	78	Hockaday.....	78	Knapp.....	83
Graham.....	84	Hoff.....	78	Knights.....	90
Grandfield.....	90	Holmes.....	84, 87	Kohn.....	80
Grant.....	79, 80	Holstein.....	84	Koontz.....	77

## Index, continued

Kress .....	83	McBride .....	76, 83	Nevil.....	83
Krobrits .....	83	McClintock .....	90	Newhofer.....	84
Kyle.....	83	McClure .....	83	Nickey.....	77
Lamb .....	79	McComas .....	90	Nies .....	88
Lampman .....	83	McCormick .....	77	Noble.....	75, 89
Lamson.....	87	McCoy.....	79, 83	Noffisinger .....	83
Landis.....	88	McDonald .....	83	Norriss.....	83
Lane.....	83	McFadden .....	83	O'Donald.....	84
Langowsky.....	78	McGovney.....	78	Onstott.....	84
Latham .....	83	McGuire .....	83	Osborn.....	88
Laux .....	81	McKee.....	83, 88, 89	Osburn.....	75, 87
Lawler .....	83	McKenan.....	83	Owens .....	76, 77
Lee.....	83	McKetman.....	83	Paleet.....	84
Leffer.....	75	McLaren .....	83	Palmer .....	84
Lehman .....	90	McNeil .....	77	Pearce.....	79, 81
Lemon(ns).....	75	McPherson .....	83	Pechin.....	75
Lewellen.....	85, 86	McSwearingen .....	83	Peck.....	88
Light.....	83	McVay.....	75	Pemberton .....	76
Lightner.....	78	McVickar .....	83	Pemnerruck .....	83
Lindsay.....	82	Mead .....	79	Phillips .....	81
Linn .....	75	Meagher .....	82	Phipps.....	78
Linville.....	76	Meats.....	77	Pierce.....	81
Litson .....	89	Mefle.....	83	Pierson.....	83
Little.....	78, 83	Melton(Milton) .....	77	Pilliar.....	78
Loar .....	82	Menz .....	87	Pinkerton .....	89
Lomax .....	76	Merriam.....	83	Plowman .....	76
Long .....	75, 77	Meyer .....	87	Plunkett .....	84
Longowsky.....	78	Middlekauff.....	88	Poenisch .....	78
Longville.....	83	Miller.....	75, 83	Poole .....	78
Losh.....	77	Millis.....	81	Pope.....	75
Lowe .....	80	Mills .....	75	Porter .....	87
Ludlum .....	77	Miltner.....	88	Prasse .....	84
Luttrell.....	88	Mingel.....	75	Pratt.....	88
Lyons.....	83	Mitchel .....	75	Pray .....	84
Maberry.....	83	Mitchell.....	78, 89	Prenna .....	83
Mackay.....	78	Mitts .....	83	Preston.....	84
Maddox .....	75	Monroe.....	83	Pride .....	84
Magee.....	83	Moore.....	87, 90	Pullium.....	87
Mancourt.....	90	Moreno.....	76	Putnam .....	89
Mans.....	89	Morford .....	89	Quain.....	84
March .....	83	Morse .....	88	Radtke .....	76
Marks .....	83	Moses .....	83	Ragland .....	77
Marsfield.....	83	Mott.....	83	Ralph.....	84
Marshall .....	75, 83	Mund.....	83	Ramsey.....	84
Martin.....	77, 79, 83	Musselman .....	90	Randall .....	87
Martsof.....	81	Mutler.....	83	Ransom .....	84
Mason.....	83	Myers .....	75	Rarrick(Rerrick).....	76
Maxwell .....	75	Neatherland .....	83	Ray .....	84
Maynard .....	77	Nelson .....	88	Reece.....	77

Reinbold.....	76	Shreve .....	75	Tirrell .....	84
Renner .....	77	Shultz .....	78	Traylor.....	76
Rhodes.....	75	Sidles.....	84	Trish .....	84
Rice .....	78	Sillsiy .....	84	Trobaugh.....	77
Rick .....	87	Sites.....	89	Troutman.....	78
Riddell.....	76	Skinner .....	84	Tucker .....	84
Riley.....	76	Sloan .....	77, 84	Tuders .....	84, 88
Risley .....	76	Smith.....	75, 78, 79, 83, 84, 89	Turner.....	84
Rissell.....	76	Smyth .....	78	Van Trees .....	82
Robertson .....	84	Snider .....	84	Vantillburgh .....	79, 81
Robinson .....	90	Snyder .....	84	Villalobos(odos).....	76
Roeshey.....	83	Sondder .....	84	Walden .....	90
Rollman.....	78	Sowers.....	82	Wallace .....	75
Root.....	75	Spencer.....	84	Waller .....	84
Ross.....	82	Spicer .....	77	Walters .....	80
Rouse.....	79	Sprague .....	87	Ward.....	79, 85, 86
Routh.....	84	Springob.....	78	Warfield .....	88
Rowlee .....	87	Stacy.....	84	Warren.....	77, 79
Rue .....	77, 83	Stagner .....	89	Washburn .....	79
Ryan .....	75	Stanley.....	76	Watson .....	69, 70
Ryland .....	84	Startzman .....	77	Weideman .....	84
Sager .....	77	Stem .....	81	Weinschenk.....	88
Sanders.....	76	Stephens.....	88	Wesley.....	75
Sawer(wyer).....	78	Stephenson .....	75	Wesson.....	88
Sawin.....	78	Stevson.....	75	Wharthy.....	84
Schack .....	88	Stewart .....	77	Wheeler.....	84
Schattner .....	79, 80	Stiers .....	76	White.....	69, 70, 77, 89
Schell.....	78	Stofer.....	90	Whitney.....	76
Schmidt .....	78	Stokes.....	77	Wigington .....	75
Schuman.....	80	Stowel(II).....	77	Willett .....	84
Scoonover .....	84	Strecker .....	84	Williams.....	77, 84
Scott .....	75, 84	Strether .....	84	Willner .....	84
Sedam.....	75	Stubbs.....	90	Wilson.....	83, 84
Seeman.....	76	Stubs.....	84	Winter .....	75
Seltzer .....	89	Sumner .....	79	Wiske .....	87, 88
Shank.....	87	Swarts.....	90	Wood.....	79, 84
Shaw.....	90	Sydal .....	84	Woodberry .....	81
Shell .....	78	Tammany .....	77	Woodford .....	78
Shepherd .....	75	Taylor.....	76, 84	Woodman.....	80
Shepler .....	84	Teats.....	82	Woodson .....	78
Sherman .....	78	Tenison.....	84	Wright .....	84
Shilkett.....	76	Terbush .....	77	Yaw .....	76
Short.....	79	Thomas.....	78	Yergler .....	89, 90
Showalter .....	84	Thompson .....	76, 78, 84	Yike.....	90
Showver .....	84	Thriscan.....	84	Young.....	75



## **PUBLICATION ORDER FORM**

Name \_\_\_\_\_

Address \_\_\_\_\_

City, State, Zip \_\_\_\_\_

Tax exemption number, if applicable \_\_\_\_\_

Publication Number/Title	Qty.	Unit Price	Total Price

Make check payable to, and mail to:

Midwest Historical and Genealogical Society  
PO Box 1121  
Wichita, KS 67201-1121

POSTAGE/ HANDLING (see chart below)	
SUBTOTAL	
* ‡ KS SALES TAX (if applicable) _____ %	
<b>TOTAL DUE</b>	

### **SHIPPING AND HANDLING CHART**

Merchandise Total	Shipping Charge
\$0.01 - \$24.99	\$4.00
\$25.00 - \$49.99	\$5.00
\$50.00 - \$99.99	\$7.00
\$100.00 - \$299.99	\$12.00
For each \$100.00 of merchandise above \$300.00, add \$4.00 to the \$12.00	

‡ Sales tax applies to Kansas destinations only; tax is the % rate at the delivered destination.

\* If you are tax exempt send copy of exemption certificate with order.

Tax Exempt # \_\_\_\_\_



**MIDWEST HISTORICAL AND GENEALOGICAL SOCIETY  
PUBLICATIONS FOR SALE**

Use order blank on last page to order

Pub #	Publication Title	Price
<b>Wichita, Sedgwick County, KS</b>		
101	History of Wichita and Sedgwick Co., KS. Past and Present, 1910, Vols. 1 and 2 in one book, reprint, 956 pgs., indexed. (hardbound)	\$45.00
13	Tombstone Readings, Calvary Cemetery (Catholic), Wichita, KS, 206 pgs, 1987	\$25.00
21	Wichita City Death Certificates from the City Directory and cemeteries (1887-1899). Indexed, 304 pgs.	\$35.00
22	Flanagan-Hunt Mortuary Records, Vol I, Apr 16, 1912 - Apr 15, 1915, 150 pgs.	\$20.00
23	Flanagan-Hunt Mortuary Records, Vol II, Apr 1915 - Nov 1917, 150 pgs.	\$20.00
29	Wichita Fire Fighters 1881-1981 (History & Personnel Records), 158 pgs	\$20.00
24	1878 Wichita City Directory names, 34 pgs	\$6.00
25	1883 Wichita City Directory names, 72 pgs	\$10.00
26	1885 Wichita City Directory names, 114 pgs	\$15.00
27	1886/7, 1894, 1900 Wichita Business Directories, 75 pgs. Compiled by Barbara Marsh.	\$10.00
49	Abstracts of Marriages, Deaths, and other news items from Wichita newspapers and KS census records. Sept 1 to 6, 1879; and Sept 1, 1884 to Mar 31, 1885. Compiled by Jerry Stout. 94 pgs., indexed	\$15.00
<b>Sedgwick County, KS</b>		
2	Sedgwick Co., KS Marriage Records Book 1, 204 pgs, County Books #A-D, May 7, 1870 - Oct 22, 1889, index. Compiled by Bill Pennington	\$25.00
3	Sedgwick Co., KS Marriage Records Book 2, 213 pgs, County Books #E-H, Oct 22, 1889 - Jul 13, 1901, index. Compiled by Bill Pennington	\$25.00
4	Sedgwick Co., KS Marriage Records Book 3, 212 pgs, County Books #I-L, Jul 15, 1901 - Nov 11, 1908, index. Compiled by Bill Pennington	\$25.00
5	Sedgwick Co., KS Marriage Records Book 4, 189 pgs, County Books #M-P, Nov 11, 1908 - Jan 22, 1913, index. Compiled by Bill Pennington	\$25.00
6	Sedgwick Co., KS Marriage Records Book 5, 214 pgs, County Books #Q-T, Jan 18, 1913 - Sept 21, 1917, index. Compiled by Bill Pennington	\$25.00
7	Sedgwick Co., KS Marriage Records Book 6, 185 pgs, County Books #U-X, Sept 22, 1917 - Aug 4, 1920, index. Compiled by Bill Pennington	\$25.00
19	Sedgwick Co., KS Marriage Records Book 7, 253 pgs, County Books #Y-BB, Aug 4, 1920 - May 17, 1924, index. Compiled by Bill Pennington	\$25.00
20	Sedgwick Co., KS Marriage Records Book 8, 215 pgs, County Books #CC-FF, May 19, 1924 - Dec 1, 1928, index. Compiled by Bill Pennington	\$25.00
70	Sedgwick Co., KS Marriage Records Book 9, 192 pgs, County Books #GG-JJ, Dec 1, 1928 - Nov 25, 1933, index. Compiled by Bill Pennington & Kimberly Rix	\$25.00
72	Sedgwick Co., KS Marriage Records Book 10, 196 pgs, County Books #KK-NN, Nov 25, 1933 - Aug 22, 1938, index. Compiled by Bill Pennington & Diana Miller	\$25.00
73	Sedgwick Co., KS Marriage Records Book 11, 196 pgs, County Books #OO-QQ, Aug 22, 1938 - Dec 27, 1941, index. Compiled by Bill Pennington & Diana Miller	\$25.00
34	1870 Census, Sedgwick Co., KS, 41 pgs.	\$6.00
35	1875 Census, Sedgwick Co., KS, index, 236 pgs.	\$30.00
28	1888 & 1891 Sedgwick Co., KS Directory Names, 20 pgs. (Wichita not included)	\$5.00
8	1900 Sedgwick Co. KS Federal Census Index, 310 pgs.	\$35.00
30	1903/4 Sedgwick Co., KS Directory Names, 39 pgs.	\$6.00
33	Sedgwick Co., KS Naturalizations and Declarations of Intentions, 1870 - 1906, 93 pgs. Compiled by Barbara Marsh	\$12.00
9	Index to Portrait and Biographical Album of Sedgwick Co., 1888, 166 pgs.	\$22.00
10	Area Keys: Sedgwick Co, KS, 52 pgs.	\$7.00
58	Sedgwick Co., KS Landowners & Tenants Directory, 1971, 52 pgs.	\$7.00
60	Obituaries from the Wichita Beacon Nov 2, 1885 - Jun 11, 1886, 14 pgs.	\$4.00
11	List of Cemeteries in Sedgwick Co., KS, w/map, 1981, 7 pgs.	\$4.00
12	Tombstone Readings & Cemetery Records, Clearwater Cemetery, Sedgwick Co., KS, 1986, 77 pgs.	\$10.00
17	Mt. Hope Cemetery near Mt. Hope, Sedgwick Co., KS, 113 pgs, July, 1981.	\$14.00
14	Sedgwick Co., KS Cemeteries, Vol. I: Afton, Eldridge, Old Fairview, James Park, Kechi (Dunkard), Herrington, Mulkey, Old Clonmel, Lutheran (White Cotton), Pleasant Ridge, Ruby; 188 pgs.	\$25.00
15	Sedgwick Co. Cemeteries, Vol II: Calvary Methodist at Garden Plain, Hoss/Old Maple Grove, Grant Twp. near Valley Center, Pleasant Valley near Bentley, Union Garrett near Derby; 135 pgs.	\$20.00
16	Tombstone Readings, Sedgwick Co., KS Cemeteries Vol. III: Seven Catholic Cemeteries in West Sedgwick Co., 88 pgs.	\$15.00
18B	Seltzer Cemetery, 14704 E. Harry, Sedgwick Co., KS, 23 pgs, Nov 1997.	\$5.00
18C	St. Paul's Lutheran between Garden Plain & Cheney, KS, 14 pgs, Dec. 1997.	\$5.00
18A	Viola Cemetery in Southern Sedgwick, Co., KS, 13 pgs, Dec 1997.	\$5.00
31	St. Joseph's Catholic Cemetery, Andale, KS. indexed, 37 pgs. Dec 1997.	\$5.00
71	Probate Index-18th Judicial District, Sedgwick Co., KS-1870 to Nov 1917	\$25.00

**MIDWEST HISTORICAL & GENEALOGICAL SOCIETY, INC.**  
 PO BOX 1121  
 WICHITA, KANSAS 67201-1121

Change Service Requested

### Publications for Sale, Continued

Pub #	Publication Title	Price
<b>Butler County, KS</b>		
36	Area Keys, Butler Co., KS, 50 pgs.	\$7.00
37	Butler Co., KS Marriages 1861 - 1885, 74 pgs.	\$10.00
38	Butler Co., KS Wills 1869 - 1901, 60 pgs.	\$10.00
<b>Chautauqua County, KS</b>		
47	Chautauqua Co., KS Marriage Records, Book 1, County Books #A-D, index, 103 pgs, Jun 5, 1870 - Dec 29, 1891. Compiled by Charlotte Bennett	\$15.00
48	Chautauqua Co., KS Marriage Records, Book 2, County Books #E-H, index, 86 pgs, Jan 6, 1892 - Aug 22, 1905. Compiled by Charlotte Bennett	\$15.00
48A	Chautauqua Co., KS Marriage Records, Book 3, County Books #I-L, index, 112 pgs, Aug 22, 1905 - Apr 25, 1926.	\$15.00
50	Chautauqua Co., KS Marriages and Deaths From CEDAR VALE COMMERCIAL, Dec 1984 - Dec 1985, 12 pgs.	\$5.00
<b>Harvey County, KS</b>		
39	Harvey Co., KS Marriages 1872 - 1895, 120 pgs	\$15.00
52	Harvey Co., KS Marriages 1896 - Apr 24, 1898, index, 21 pgs	\$5.00
51	Deaths, Marriages and Births from Newton, KS local newspapers, selected from 1887 - 1888, 1892 - 1894, 1901 - 1902, 1915. 94 pgs, indexed.	\$25.00
<b>Marion County, KS</b>		
40	1870 Marion Co., KS Federal Census, 46 pgs.	\$6.00
<b>Sumner County, KS</b>		
41	Argonia Cemetery Index, Sumner Co., KS, 47 pgs.	\$6.00
203	Tombstone Inscriptions, Sumner Co., KS (hardbound), 406 pgs. Compiled by Robert Brady.	\$45.00
42	Sumner Co., KS Marriages, Book A, 1871 - 1880, index, 34 pgs. Compiled by Barbara Marsh.	\$6.00
59	Index to Sumner Co., KS Portraits & Biographical Album, 35 pgs.	\$6.00
204	Caldwell Cemetery, Sumner Co., KS (hardbound), 227 pgs, Dilmond D. & Evelyn I. (Sturm) Postlewait.	\$45.00
<b>Territorial Kansas</b>		
44	Kansas Territorial Marriages, 1854 - 1861, 24 pgs.	\$6.00
43	Kansas Territorial Deaths, 1854 - 1861, 21 pgs.	\$6.00
62	Kansas Marriages, Births & Deaths Before 1854, 48 pgs.	\$10.00
<b>Midwest Historical &amp; Genealogical Society</b>		
1	Midwest Historical & Genealogical Holdings, Feb 1997, 142 pgs.	\$16.00
46	Kansas Tidbits from MHGS Register, 266 pgs. Includes Early Settlers of Sedgwick, Butler, Bourbon, Cloud, Kearney, Linn, McPherson, Reno, Rice, Republic, Wilson Cos.; School Records or Civil War Burials from Barton, Kingman, Rice, Washington and Wilson Cos.; Neosho Co. Marriages, etc.	\$30.00
57	Genealogies & Family Newsletters, MHGS Library, 43 pgs.	\$6.00
104	Past Issues of the MHGS REGISTER Any three issues.	\$2.50 \$6.00
53	Topical Index of MHGS REGISTER, Vols I -XXXI, 27 pgs.	\$3.00
<b>Midwest Area</b>		
201	Index of Grant Co., OK Land Patents, 112 pgs (hardbound) w/maps. Dilmond D. & Evelyn I. (Sturm) Postlewait.	\$25.00