



# **MIDWEST Historical and Genealogical REGISTER**

**Vol. XX April-June 1985 No. 1  
Wichita, Kansas**

# REGISTER

VOLUME XX

APRIL-JUNE 1985

NUMBER 1

## CONTENTS

|  |    |
|--|----|
| FLASHBACK.....                           | 2  |
| PRESIDENT'S MESSAGE.....                 | 4  |
| THE KANSAS CONNECTION.....               | 5  |
| ADDITIONS TO OUR LIBRARY SHELVES.....    | 6  |
| NEW MEMBERS.....                         | 8  |
| THE UNION VETERAN CORPS.....             | 9  |
| LAND OF THE POST ROCK.....               | 16 |
| CHEROKEE MARRIAGES.....                  | 18 |
| A. G. MUELLER FUNERAL HOME RECORDS.....  | 21 |
| BOOK REVIEW.....                         | 26 |
| BENTON CEMETERY, BUTLER CO., KANSAS..... | 27 |
| SEDGWICK COUNTY MARRIAGES, cont.....     | 33 |
| WICHITA CITY DIRECTORY - 1878, cont..... | 38 |
| QUERIES.....                             | 40 |
| INDEX.....                               | 42 |

---

PUBLISHED QUARTERLY BY MIDWEST HISTORICAL & GENEALOGY SOCIETY

---

MEMBERSHIP DUES: Individual.....\$10.00.....April 1-March 31  
Family(2).....\$15.00.....Yearly, 4 Registers/year  
Societies.....\$8.00 per year, single copies  
\$2.50 each, includes tax and mailing.

Includes one issue of REGISTER each quarter. If dues are unpaid by April 1, you will not receive the first issue mailed in May. Memberships received after publication mailing will receive back issues with the next mailing. Members may submit any number of Queries; two published each issue. Non-members, one free query per year as space allows. Mailing dates: ca May 15, Aug 15, Nov 15, Feb 15.

Please send queries and articles for publication (charts, Bible records, court records, obituaries, historical stories, etc) with "Permission to Publish," your signature, date submitted, and source of information to Attention: Editor, MHGS Library Office.

All material for publication is subject to editing to conserve space. Every effort will be made to publish accurate material; Midwest Historical & Genealogical Society and Editor will not assume responsibility for error on part of contributor. Corrections of proven errors will be published. We are not responsible for publishing rights of contributed material. ADVERTISING RATES: \$1.25/line; display-- 1/4 page/ \$3.50; 1/2 page/ \$7.00; full page/ \$12.00.

# Flash Back !

March 1st, 1986 will mark the twentieth birthday of M.H.G.S.. The following article appeared in the Vol. I #2 issue of the Register. The Vol. I # 1 issue was called a newsletter as the "Register" had not yet been named. A membership roster in this issue lists a total of 42 members - very good for a brand new organization.

What began as a "brain storm" to Mary B. Schultz now has a growing 600 plus membership.

## AN IDEA SNOWBALLS INTO MIDWEST GENEALOGICAL SOCIETY, INC.

By Mary B. Schultz

Have you ever been bitten by the "genealogy bug"? When you have been, you are frequently subject to brain storms. I had one of those brain storms last fall when the idea popped into my head that it would be interesting to have a genealogy study group. I visualized a small informal group of six or eight, who would meet in the home, exchange ideas and help each other.

A suggestion on the radio and a note in the Home Town News of Wichita Eagle brought a tremendous response. The telephone rang for days and everyone seemed really enthusiastic about the idea of such a study group. One man loaned a big stack of books and magazines on genealogy to me. These I read with consuming interest. Most people expressed a desire for a genealogical society here. Wichita is the largest city in Kansas and there was a feeling that we were long past due for such an organization.

I spent most of the next three months and some sleepless nights studying books from the library on the correct procedure for starting organizations. There seemed to be a formidable array of never ending steps and pitfalls in the process. For instance, there were constitution and by-laws, charters, seals, bonding, insurance, tax exempt status and special mailing rates, to name only a few.

After considering all the responsibilities involved, there were times when I almost got "cold feet" and was tempted to chuck the whole idea. After all who was I to be presumptuous enough to start such a big project? But then, when my spirits hit bottom, there was always someone to encourage me to accept the challenge. It is hard for me to resist a challenge.

Let me say here that, from the start of this idea, it has been fantastic the way doors have opened for us. Whenever there has been a real need a way has been provided.

I am of the firm conviction that, if you are going to have an organization, you should start right with a good solid foundation; then you are in a position upon which to build. It soon became apparent that we would need the services of a competent attorney and that it was advisable to incorporate.

One of those doors opened when, in considering the names of attorneys, one name rang a bell. I recalled that I had known Judge Kenneth Kimmel as a Dale Carnegie instructor. He had impressed me as a very capable and sincere person. In response to a call the Judge seemed genuinely interested in the idea of our society. He suggested that several of us come in to discuss this further with him. This we did, without obligation.

Next we had a committee meeting to draw up our by-laws. Finally on March 1, 1966, we took THE BIG STEP when Ann Adams, Judge Kenneth C. Kimmel and I signed as the original incorporators and applied for our state charter. The name Midwest Genealogical Society, Inc. was selected and a nominating committee was appointed.

March 17, 1966 was a red letter day in the history of our society. On this

date an organizational meeting was held in my home. Shamrocks were much in evidence although I am sure the Irish were outnumbered. Judge Kimmel was there to show us our new charter and seal and to read the by-laws which were adopted. Following this we had election of officers and board members.

Judge Kimmel had shown so much interest in our project and had contributed so graciously of his time and knowledge that we, as a token of our appreciation, voted unanimously to make him a Lifetime Charter Member of our society. He has since been elected as a member of the board.

On May 26, 1966 at our regular monthly meeting, Judge Kenneth C. Kimmel was presented a certificate of Lifetime Charter Membership in the Midwest Genealogical Society, Inc. This certificate was hand lettered by a nationally prominent Indian artist, Black Bear Bosin. This was presented as an expression of our deep gratitude for the many courtesies that Judge Kimmel had extended to our society.

Our next major need was for a place to hold monthly meetings. A place large enough to give our membership an opportunity to grow. Again a door seemed to open and this need was supplied. Although meeting places are very difficult to obtain, we were fortunate enough to secure the lovely Blue Room of the Southwest National Bank, thanks to their courtesy. The same was true of our board meeting room at the Southwest Federal Savings and Loan Association. When we were ready to start classes the beautiful Board of Directors Room at the Kansas State Bank, complete with massive tables and a blackboard was perfect for our needs. We are indeed grateful for these accommodations.

Our library program hit a temporary snag when our very efficient librarian Pat Pineout moved to Topeka. We want to thank all of you who have been "pinch hitting" for us at the library the last few weeks. We will soon have our new library program organized and will have someone at the city library one afternoon a week to help beginners with their genealogy. With our new city library opening this fall, we indeed have much to look forward to.

November general meeting will be a special dinner meeting at the Y.M.C.A. This will be one of the highlights of the year; an opportunity for husbands and wives to attend together and a chance for all to become better acquainted. Plans for the program are in the making. I am sure our program chairman Vera Brown has some surprises "up her sleeve". Be sure to mark a big circle around Friday, November 18th on your calendar. We will keep you informed as plans progress.

Looking back over the last five months it appears we have made outstanding progress. Just to chalk up a few of our accomplishments:

1. We have had a June newsletter and this is our first quarterly magazine. We plan to improve this as time and finances permit until we have a top publication.

2. May 13th and 14th a very successful garage sale was held at the home of Betty Flory. Goldie Swartsfager, chairman of the ways & means committee, was assisted by Judy Somers and Pam Medlam. They did an excellent job of planning the sale. Everyone "pitched in" to help make this a real success. We are planning another garage sale soon.

3. We have paid a substantial part of the cost of incorporating. We have some ambitious plans for the future that include among other things the purchase of our own printing machine.

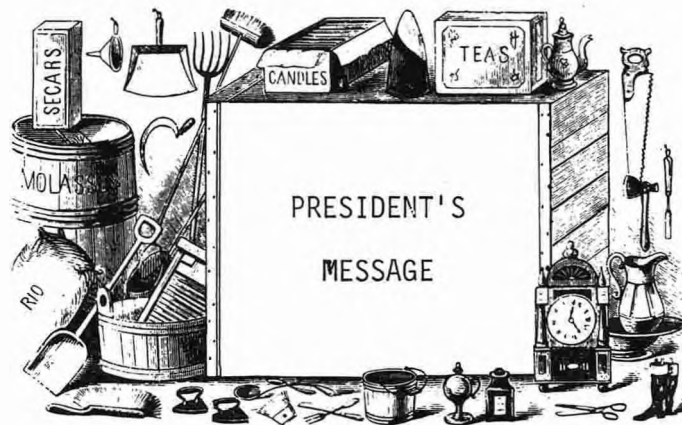
4. Arietta Gage, our editor and very capable instructor, has been teaching our classes in genealogy. All members of the society are eligible and there is no charge for these classes.

5. Louise Brehm, our membership chairman, has really been "on her toes". In the past five months she has helped us almost triple our membership, which is an outstanding record; so we feel we are off to a flying start. All who

join the first year will be charter members.

I am proud of the privilege to serve as your first president.

The opportunities ahead present a challenge that seems almost unlimited. Let's accept that challenge! We can dream big and then all work together to make those dreams a reality. Let us make our Genealogical Society one in the front ranks.



March 1966 - March 1986

Please observe the volume and issue numbers of this quarterly. We are almost 20 years old!

To our charter members, active and past, we thank you for your tedious endeavors to put forth your ideals and labors of love to establish this Society. Our growth has been tremendous and we know you are proud, as we are also.

We have the past, present, and a great future to prosper. Let us all continue to work in harmony.

Grant us guidance that the heritage we leave will be as worthy as the heritage you have given to us.

Bev. Malone, President

# THE KANSAS CONNECTION

A REVIEW OF SOME NEW KANSAS MATERIAL IN THE LIBRARY.

By Bill Pennington

ABSTRACT OF INFORMATION AND INDEX OF 1905 STANDARD ATLAS OF ELLIS COUNTY, KANSAS, copyright 1984 by Eileen E. Langley. A-79. A three part compilation of the landowner atlas of Ellis county for the year 1905. Part 1 gives the landowners by township, range and section and tells the portion of the section that they owned. Part 2 is an exact copy of the patrons directory that appeared in the atlas and part 3 is an alphabetical index covering parts 1 and 2. An admirable compilation that I'm sure will be of value to those people searching in Ellis county.

LINN COUNTY, KANSAS A History, copyright 1928 by William Ansel Mitchell. R-210-184. While not a new publication, this material is new to our library. A collection of stories concerning Linn county and some of the people who lived there. An added bonus is the index which is not found in many books published a number of years ago.

CHASE COUNTY HISTORICAL SKETCHES, Volume 4, 1984, Chase County Historical Society. The fourth volume in a series started many years ago, this book contains family histories submitted to the historical society. While there is not an every name index there is an index to the biographical titles.

PROTECTION PARAGRAPHS, A Scrapbook of Historical Highlights, by Dave Webb, 1984. As far as the small town histories being published these days I'm sure that this one is a little out of the ordinary. Bound like a scrapbook with a string tie it is printed in black and brown. Each decade from 1880 to 1930 has a section of the book and there are many pictures.

BURIED TIES TO THE OLD COUNTRY, copyright 1983 by Eileen E. Langley. "A study of the foreign origin of certain immigrant families in Ellis, Kansas, compiled from the funeral records of the Niesley Funeral Home for the period 1921-1947. This is another of Miss Langley's well done works that covers individuals in the Ellis, Kansas area.

STANDARD ATLAS OF MARION COUNTY, KANSAS. Including a plat book of the villages, cities and townships of the county. 1921 Geo. A. Ogle and Co. Just like all of the other county atlas that were published from the 1880's to the 1920's this one has each township shown and the landowners given. They can be of great value in locating where one's ancestors lived.

COFFEY COUNTY FOOTPRINTS, Coffey County Genealogical Society, Burlington, Kansas. A new exchange for our Society. Just in their third year of publication this Society has published a variety of material in their quarterly. Sometimes the print quality is somewhat hard to read but I'm sure with time they will be better.

PRATT, KANSAS A Centennial View, 1884-1984. By Tim Stucky. R-210-188. This publication contains in 127 pages of pictures and prose written about the schools, various business and organizations in the city of Pratt, Kansas. While it is mostly a historical work with very little genealogical material it is still usefull to the student of genealogy of the Pratt area. What impressed me most was the clarity and contrast of many of the photographs. Its a book to be proud of.

ILLUSTRATED DONIPHAN COUNTY 1837-1916 Seventy-nine Years of Progress and Prosperity. R-210-189. A republication of a supplement to The Weekly Kansas Chief, Troy, Kansas, April 6, 1916. This is an interesting book with many photographs accompanying the text. Besides articles on local residents, histories of local organizations, schools, ect. it also contains a listing of former residents of the county and where they were living in 1916.

---

#### ADDITIONS TO OUR LIBRARY SHELVES

- A-79            Abstract of Information & index of the 1905 Standard Atlas of Ellis Co, Kansas (Donor-Eileen Langley)
- A-80            North Carolina County Maps (Donors-Dorothy Woodroof & Joanne Black)
- A-81            Standard Atlas of Marion County, Kansas (Donor-Barbara Heinsolm)
- CC-7            Computer Genealogy by Paul Anderock (Purchased)
- G-B-26          A Summary of Research on the Family Tree of Hendrick Banta III A Pioneer in the Kentucky Wilderness (Donor-Franklyn Frick)
- G-B-27          Banta Pioneers and Records of the Wives and Allied Families (Donor-Franklyn Frick)
- G-B-28L        The Birdsall Family By George Birdsall (Loan-Joanne James)
- G-D-18          Genealogical Research of Individuals of the Demarest Family Tree (Donor-Franklyn Frick)
- G-K-11          Peter Kuhn Family History and Records (Donor-Barbara Heinsolm)
- G-S-39          Tennessee Smithology By Emma Barrett Reeves (Donor-Jerry Stout)
- G-S-40L        The Descendants of Peter Simmons (Loan-Joanne James)
- G-Y-3           Kith and Kin of James and Mary (Kellough) Young (Donor-Miriam Pack)
- I-96            Ancestry's Guide to Research-Case Studies in American Genealogy (Purchased)
- M-40-32        Bits of Bark from the Family Tree, Batesville, Arkansas Genealogy Society (Exchange)
- M-210-16       Coffey County Footprints, Coffey County Genealogical Society (Exchange)
- M-220-48       Harlan Footprints, Genealogical Society of Harlan County, Kentucky (Subscription)
- M-380-25       The Franklintonian, Franklin County, Ohio Genealogical Society (Donor-Judy Fields)
- M-430-71       Bulletin of the Upper Cumberland Genealogical Association Cookeville, Tennessee (Donor-Corinne Afton)
- M-610-6        National Society of the U.S. Daughters of 1812 (Donor-Helen Lee)
- R-60-25        Heritage of Old Buncombe County, North Carolina Volume 1 (Coop-Teresa Pennington)
- R-60-26        Surry County, North Carolina Court Minute Abstracts Volume 1 1768-1785 (Purchased)

R-60-27      Surry County, North Carolina Records of Deed Books A,B,C,  
                  (Purchased)

R-60-28      Stokes County, North Carolina Record of Deeds Volume 1  
                  1787-1793 (Purchased)

R-60-29      Stokes County, North Carolina Will Abstracts Volume 1 & 2  
                  (Purchased)

R-190-52      The Hoosier Journal of Ancestry - Clark County Special  
                  (Exchange)

R-190-53      The Hoosier Journal of Ancestry - Washington County Special  
                  (Exchange)

R-200-29      Portrait and Biographical Album of Jasper, Marshall and Grundy  
                  Counties, Iowa (Coop-Cora Parker & Bill Pennington)

R-210-184      History of Linn County, Kansas by Wm. Mitchell (Donor-Doris Weaver)

R-210-185      Chase County, Kansas Historical Sketches Volume 4  
                  (Coop-Cora Parker)

R-210-186      Protection Paragraphs by David Webb (Litter Letter)

R-210-187      Buried Ties to the Old Country, Ellis County, Kansas by  
                  Eileen Langley (Donor-Eileen Langley)

R-210-188      A Centennial View of Pratt, Kansas (Litter Letter)

R-210-189      Illustrated Doniphan County    Kansas 1837-1916 (Litter Letter)

R-210-140b      Ghost Towns of Kansas Volume 2 (Donors-Merle & Vera Seavey)

R-220-41b      The Kentucky Gazette 1801-1820 (Coop-John Schunk)

R-300-63      Pionners of the Six Bulls, Newton County Missouri Saga  
                  Volume 24 (Donor-Micki Crozier)

R-370-22      10,000 Vital Records of Western New York (Memorial-D.W. Pray)

R-380-56      Darke County, Ohio Marriage Records 1817-1840 (Coop-Jerry Stout)

R-380-57      Darke County, Ohio Will Abstracts 1818-1857 (Coop-Jerry Stout)

R-380-58      Preble County, Ohio Marriage Records 1808-1840 (Coop-Cora Parker)

R-380-59      Preble County, Ohio Will Abstracts 1808-1836 (Coop-Cora Parker)

R-430-39      Cannon County, Tennessee by Robert Mason (Coop-Teresa Pennington)

R-600-87L      Mathew Brady's Illustrated History of the Civil War  
                  (Loan-Joanne James)

R-600-88L      The Photographic History of the Civil War-Armies & Leaders  
                  (Loan-Joanne James)

---

#### INFLATION REACHES D.C.

It now costs \$20.00 (up from \$17.00) to purchase a roll of microfilm from the National Archives. Free catalogs titled

Federal Population Censuses 1790-1880

The 1900 Federal Population Census

The 1910 Federal Population Census

National Archives Microfilm Publications

(includes ships passenger lists)

are available with all necessary information for ordering film.

Write: National Archives & Records Administration, Customer Service, Washington D.C. 20408.



WELCOME TO THESE NEW MEMBERS:

|                                      |  |
|--------------------------------------|--|
| George & Hazel REEVES                | 815 N. Sheridan, 67203                     |
| Norma J. ROSAS                       | Drawer DD, Page, AR 86040                  |
| Edward N. TIHEN, M.D.                | 1227 N. River Blvd., 67203                 |
| Dione A. NEWTON                      | 11517 Dellaire, 67207                      |
| Ruth Jeanine WOODIN                  | 2001 Fairchild, 67219                      |
| Gerald HENDRIXSON                    | 658 N. Belmont, 67208                      |
| Mary Virginia BELT                   | RR #1, Box 147, El Dorado, KS 67042        |
| Raymond E. & Alma COPLIN             | 900 N. Crestway, 67208                     |
| Wanda ELLIOTT                        | 1602 Skyview, 67212                        |
| Wanda HACKNEY                        | 536 N. Birch, Valley Center, KS<br>67147   |
| Josephine (Jo) HUCKABEE              | Rt 3, Box 153, Rose Hill, KS<br>67133-9759 |
| Kathryn M. UNRUH                     | 1839 S. Washington, 67211                  |
| Ardith L. OTT                        | 1318 Wilbur Ln, 67212                      |
| Lorraine A. BEARTH                   | 1313 Frontenac, 67219                      |
| Coral W. FOX                         | 2010 W. 17th, 67203                        |
| Alvena GRANTZ                        | 2337 S. Washington, 67211                  |
| Nancy R. & Bettie Louise<br>HARRISON | 1957 S. St. Francis, 67211                 |
| Dorothy M. HLADIK                    | Rt 2, Box 85, Hennessey OK 73742           |
| Pauline Mae INGARGIOLA               | 161 N. McComas, 67203                      |
| Leonard H. MONTGOMERY                | 4701 Salina, 67204                         |
| Alice PARCEL                         | 2248 Ellis, 67211                          |
| R. V. WOODRUFF                       | 717 N. St. Paul, 67207                     |
| Oneita J. BOLLIG                     | 2756 Classen, 67216                        |
| Amy Gwinn NESSLY                     | 8518 Peppertree, 67208                     |
| Floyd O. GRUVER                      | 1318 Dunsworth, 67212                      |
| Mary C. BOWEN                        | 4885 Academy St., San Diego, CA<br>92109   |
| Christine JACKSON                    | Box 168, Longton, KS 67352                 |
| Marian SCHMIDT                       | 401 N. Oakwood Dr. 67208                   |
| John & Judy DUFF                     | 4828 Conyers, Derby, KS 67037              |
| Janet ARBUCKLE                       | 14400 University 67235                     |
| Thomas V. WAPELHORST                 | P.O. Box 1127, Belle Plaine, KS<br>67013   |
| Ralph R. BELT                        | Rt 1, Box 147, El Dorado, KS 67042         |
| Dorothy FRONING                      | 8620 Huntington, 67206                     |
| Susan M. & Mark D. LOY               | 1507 N. Old Manor, 67208                   |
| JoeAnne Jones CLOUD                  | 7000 W. 48th North, 67205                  |

---

DID YOUR ANCESTOR RETURN TO THE "OLD COUNTRY" FOR A VISIT?

The National Archives has passport applications & related papers from 1791 of U.S. citizens who intended to travel abroad and will make limited searches for age & citizenship information in any of these records that are at least 75 years old. Supply name of applicant, place and approximate date that application might have been made. Send to National Archives & Records Service (NARS), General Services Administration, Washington, D.C. 20408.

THE UNION VETERAN CORPS.

The Wichita City Eagle  
November 20, 1879

It was resolved to complete a perfect roster of the ex-soldiers of each township in Sedgwick County, giving name, state, regiment, corps and present post office address. The Eagle will publish the whole as a matter of history and future reference. Grant township appears this week. We hope the other townships may be sent in as rapidly as completed, in accordance with the resolution. The complete muster roll will contain the names of a majority of the best men in the county, and will be valuable for future reference.

ROSTER OF UNION VETERAN CORPS — Grant Township

Sunnydale P.O.

Wm. P. Slocum, captain, 17th Illinois Infantry, 13th corps. Wounded at Frederickstown, Missouri.

John Knight, private, 5th Wisconsin Cavalry.

Stephen D. Mehew, private, 124th Illinois Infantry, 15th corps. Wounded at battle of Kennesaw Mountain.

Theo. D. Raymond, private, 7th Illinois Infantry, 15th corps. Captured at the battle of Corinth.

Henry F. Wills, private, 5th Missouri Cavalry.

Lewis C. Noble, private, 30th Ohio Infantry, 15th corps.

James E. Ash, private, 15th Ohio Infantry, 15th corps. Wounded at Kennesaw Mountain.

Albert J. Weaver, captain, 110th Illinois Infantry, 15th corps.

John Bruce, private — Missouri.

John Harmon, private, 13th Tennessee Infantry, 4th corps. Was in the Sixth Missouri C.S.A., wounded and captured at Corinth, Mississippi.

Alex. McCracken, private, 17th Indiana Infantry, 15th corps.

Leroy Fesdick, private, 12th Iowa Infantry, 15th corps.

Ira Jackson, private, 103 Illinois Infantry, 15th corps. Was a prisoner at Andersonville.

Cassius C. Campbell, private, 1st Pennsylvania Cavalry.

Geo. E. Holbrook, private, 9th Illinois Infantry.

Sunnydale P.O. cont.

Lewis Fassett, private, 153 Illinois Infantry.

S.P. Davidson, private, 147 Illinois Infantry.

J.M. Dunn, private, 2d Illinois Cavalry.

William C. Hutchinson, private, 104th Illinois Infantry.

John Baxter, private, 88th Ohio Infantry.

Elmore VanGundy, private, — Ohio Infantry.

S.H. Britain, private, 178th Pennsylvania Infantry.

Seth L. Raymond, captain, 7th Illinois Infantry, 15th corps.

Sedgwick P.O.

A. Shepard, sergeant, 77th Illinois Infantry.

M.E. Goodell, sergeant, 2d California Cavalry.

Rufus J. Allan, private, 33d Wisconsin Infantry, 4th corps. Wounded at the battle of Mansfield, Louisiana.

John Pingel, private, 16th Illinois Infantry, 14th corps.

Charles Cooke, private, 7th Vermont Infantry, 5th corps.

Wm. Wolfington, private, 5th Missouri Cavalry.

Henry Latham, private, 116th Illinois Infantry, 15th corps.

Michael Bartly, private, 31st Wisconsin Infantry, 20th corps.

John C. Hyde, private, 7th Illinois Cavalry.

Geo. H. Perry, private, 46th Illinois Infantry, 5th corps.

Josh D. Pepper, private, 86th Illinois Infantry, 14th corps.

John D. Burns, private, 86th Illinois Infantry, 14th corps.

Valley Center P.O.

Wm. S. Spaulding, private, 21st Pennsylvania Cavalry.

Theo. S. Spaulding, private, 12th Pennsylvania Infantry. Pennsylvania Reserves.

Thos. O. Hoss, captain, 61st United States Infantry.

James Beard, private, 16th Kansas Cavalry.

Valley Center P.O. cont.

Martin Carnahan, private, 106th Illinois Infantry.

Robert Carnahan, private, 106th Illinois Infantry.

\_\_\_\_\_ Willich, private, 106th Illinois Infantry.

W.F. Goodrich, 43d Illinois Infantry.

Sam'l Foote, private, 54th Illinois Infantry, 4th corps.

Wichita P.O.

Christ. P. Baker, private, 36th Illinois Infantry, 8th corps.

Newton P.O.

J. H. C. Swann, private, 8th Illinois Infantry.

U.V.C.

The Wichita City Eagle  
November 27, 1879

Muster Roll of Eagle Township

George W. Irwin, private, 11th Illinois Cavalry.

Eugene S. Parsons, private, 53d Illinois Infantry, Prisoner of war.

George W. McMurray, 46th Illinois Infantry.

John J. Stiles, private, 9th Missouri Cavalry.

B.C. Smith, private, 47th Indiana Infantry.

Samuel Bull, corporal, 40th Illinois Infantry. Wounded in battle.

M.M. Biggs, private, 101st Indiana Infantry.

P.M. Campbell, sergeant, 101st Indiana Infantry.

A.W. Biggs, private, 155th Pennsylvania Infantry. Wounded in battle.

Muster Roll of Attica Township

Murray Myers, captain, 44th Illinois Infantry. Four years and five months service.

Attica Township cont.

Martin S. Rochelle, sergeant, 46th Ohio Infantry. Wounded.

John E. McClellan, private, 47th Illinois Infantry.

A.M. Auld, private, 6th Indiana Infantry.

Wm. E. Allen, private, 128th Indiana Infantry.

Samuel Speer, private, 18th Indiana Infantry.

A.H. McConahie, private, 5th Illinois Cavalry.

Joseph Knofflock, private, 155th Indiana Infantry.

John Ogden, private, 30th and 190th Pennsylvania Infantry.

John Arp, sergeant, 6th Iowa Cavalry.

John Coleman, private, 2d Col. Cavalry.

C.C. Chivington, private, 152d Indiana Infantry.

Thomas Lewis, lieutenant, 8th Ohio Art.

J.P. Parkhurst, private, 86th Illinois Infantry.

Muster Roll of Delano Township

C.M. Platt, private, 25th Pennsylvania Infantry.

Eli C. Benton, private, 19th Michigan Infantry. Prisoner.

John McCormack, private, 1st Iowa Cavalry.

J.W. Keith, private, 13th Michigan Infantry.

Enoch Dodge, Private, 100th Illinois Infantry.

G.E. Kirkpatrick, private, 162d Ohio Infantry.

John J. Hughs, private, 128th Illinois Infantry.

Alfred Ratsell, private, 91st Pennsylvania Infantry. Wounded.

J. Nester, private, 20th Illinois Infantry.

Muster Roll of Wichita Township

T.D. Fouts, lieutenant colonel, 137th Indiana Infantry.

J.C. Millis, captain, 185th Ohio Infantry.

John Falkenstein, q.m. sergeant, 3d West Virginia Cavalry.

Wichita Township cont.

M.R. Moser, first lieutenant, 149th Pennsylvania Infantry.

S.S. Riddle, hospital steward, 83d Pennsylvania Infantry.

M.H. Bruce, private, 61st Illinois Infantry.

J.F. Lauk, lieutenant colonel, 33d Kentucky Infantry.

S.W. Fitzgerald, q.m. sergeant, 2d Col. Cavalry.

John Carothers, private, Ohio Signal Corps.

Wm. O. Hammond, lieutenant, Pennsylvania, Navy.

C.S. Eichholts, private, 92d Illinois Infantry.

E. Phillips, private, 21st Wisconsin Infantry. Prisoner and wounded.

Andrew Rhoads, private, 48th Indiana Infantry. Wounded.

J.H. Brown, lieutenant, 202d Pennsylvania Infantry.

Wm. H. Parcells, private, 12th Indiana Infantry. Wounded.

Henry Vigus, private, Missouri Guards, Mexican soldier.

John C. Kinkead, private, 20th Iowa Infantry.

A.J. Cook, private, State Guards, New York '32.

U.V.C.

The Wichita City Eagle  
December 11, 1879

Muster Roll of Illinois Township

H.H. Smith, private, 3d Missouri Infantry.

John Stump, private, 144th Illinois Infantry.

J.P. McGovney, private, 91st Ohio Infantry.

W.T. Likely, private, 46th Pennsylvania Infantry.

W.S. Struthers, lieutenant, 83d Illinois Infantry.

M.T. Britton, private, 7th Ohio Infantry.

J.W. McGriff, corporal, 18th Ohio Infantry.

Illinois Township cont.

C. Barney, sergeant, 7th Illinois Infantry.

James Stover, private, — Ohio Infantry.

Peter Bock, 2nd lieutenant, Indiana, U.S. Navy.

W. Dormer, private, 7th Ohio Infantry.

Jacob A. McMillien, private, 14th Indiana Infantry.

S.M. Harper, captain, 49th Ohio Infantry. Recently deceased.

J.F. Harper, 1st lieutenant, 49th Ohio Infantry.

E.P. Ford, corporal, 88th Illinois Infantry.

W.W. Crane, sergeant, 97th Indiana Infantry.

E.R. King, corporal, 122d Illinois Infantry.

Jas Adams, musician, 122d Illinois Infantry.

Theodore Ott, private, 1st Wisconsin Infantry. Prisoner at Andersonville  
14 months.

A. Sackett, corporal, 59th Illinois Infantry.

C.A. Vinton, private, 19th Michigan Infantry. Captured and confined in  
Libby prison.

Waco Township

S.M. Tucker, 1st lieutenant, 10th Kansas Infantry.

J.C. True, private, 40th Missouri Infantry.

Geo. A. White, private, 17th Massachusetts Infantry.

Sylvester Wyckoff, private, 90th Ohio Infantry.

Geo. E. Morgan, private, 128th Ohio Infantry.

M.E. Morgan, sergeant, 128th Ohio Infantry.

M.E. Swingel, private, 169th Pennsylvania Infantry.

C.F. Carroll, private, 7th Illinois Infantry.

R.L. O Meally, private, 1st Michigan Artillery.

S.S. Bowman, private, 116th Illinois Infantry.

J.B. York, private, 119th Illinois Infantry.

Waco Township cont.

John Wickham, musician, 27th Wisconsin Infantry.

Thos. W. Owing, private, 5th Illinois Cavalry.

Henry Tate, 1st sergeant, 100th Illinois Infantry.

Warren Amos, not reported in full.

Enos Barrett, " " " "

Gypsum Township

Jos. B. Gifford, private, 65th Ohio Infantry. Prisoner at Andersonville.

D.L. Brown, private, 28th Illinois Infantry.

J.P. Winters, private, 65th Illinois Infantry. Wounded.

B. Newman, sergeant, 88th Illinois Infantry.

W.H. Hensley, sergeant, 1st Missouri Engineers.

A.H. Young, 6th Wisconsin Infantry. Wounded.

J.A. Edwards, 1st lieutenant, 14th Illinois Cavalry.

J. B. Otto, 1st sergeant, 2d Pennsylvania Cavalry.

Cyrus Webb, captain, 3d West Virginia Infantry.

Adam Bixler, private, 48th Indiana Infantry.

M. Chapman, not reported in full.

John Dolan, " " " "

J.Z. Yapple, " " " "

Daniel Forbes, " " " "

Robert B. Dodge, " " " "

S.B. Gibson, " " " "

H. Brownlee, " " " "

to be continued....

Extracted from the Wichita City Eagle  
by Bill & Teresa Pennington



"LAND OF THE POST ROCK"  
by Grace Muilenberg and Ada Swineford

Book Review by Merle Seavey

Many of you have traveled northwest by way of U.S. 96 through Hutchinson, Lyons, Great Bend and north to Russell - or perhaps west from Hoisington to Rush Center, through Liebenthal to Hays. Even traveling west on U.S. 70 you probably noticed all the white rock fence posts. INTRIGUED????

Travelers questions of the 1950's received few authoritative answers. A few Kansas Geological Survey pamphlets aroused interest, then encouraged Grace Muilenberg and Ada Swineford to research and print this book with many fine pictures and 48 pages of references and alphabetized surnames. It has been reprinted several times. The first portion of the book is geologic and needs to be studied to appreciate the entire book.

Records indicate the area we now call Post Rock Country began to be settled in the mid 1860's. These postrock pioneers were cheated for lack of timber for cabins & fuel and some, no doubt, moved on to places more to their liking. Even the soil wasn't conducive to building sod houses as was Nebraska and farther west in Kansas. But nature smiled on these many different ethnic groups. With lots of determination and little to lose - lots of elbow grease and a minimum of equipment - they were able to quarry the relatively soft lime stone which had a minimum of over burden to remove. This was usually done with a plow, slip scraper or Fresno and even a shovel. With some air drying or curing this limestone became quite permanent.

Some of these pioneers were professional stone masons, mostly from the Baltic and Scandinavian countries. With a bit of apprenticeship these industrious people soon were not only putting up rock fence posts, but farm homes and other buildings. Schools, cathedral type churches and in many of the towns the major business buildings were of stone. In more recent times these business buildings have been modernized and new faces added, but if you drive down the business alleys you can appreciate the sturdiness of these century and a quarter old structures.

Many of these even castle type structures are being modernized and lived in - some are even show places. Many of these buildings have been torn down and rebuilt in a more appropriate place. Some towns may have a church and stone fenced cemetery with perhaps a school house being used as a community building.

After W.W. I most farm practices had improved and posts and lumber were more affordable. The use of stone was mostly dropped until the 1930 depression days when W.P.A. projects like building county court houses, schools, bridges and cemetery fences revived the use of the native stone - with employment being the main issue. Due to the inflated costs of other building materials, antiquity interests, lack of upkeep and permanence there has been a renewed interest in building with native stone in the last decade or so. Modern machinery has contributed to an easier method of quarrying.

Post Rock Country extends from the Kansas - Nebraska line thru western Washington County and eastern Republic County around Belleville generally southwest. The southeastern edge includes Concordia, Lincoln, Ellsworth, on west to Great Bend and Larned to just north of Dodge City. The north side includes Mankato, Osborne, Hays, Ness City, Jetmore and Buckner. This book divides the Post Rock area into three parts; Upper northeast, the middle section and the southwest third.

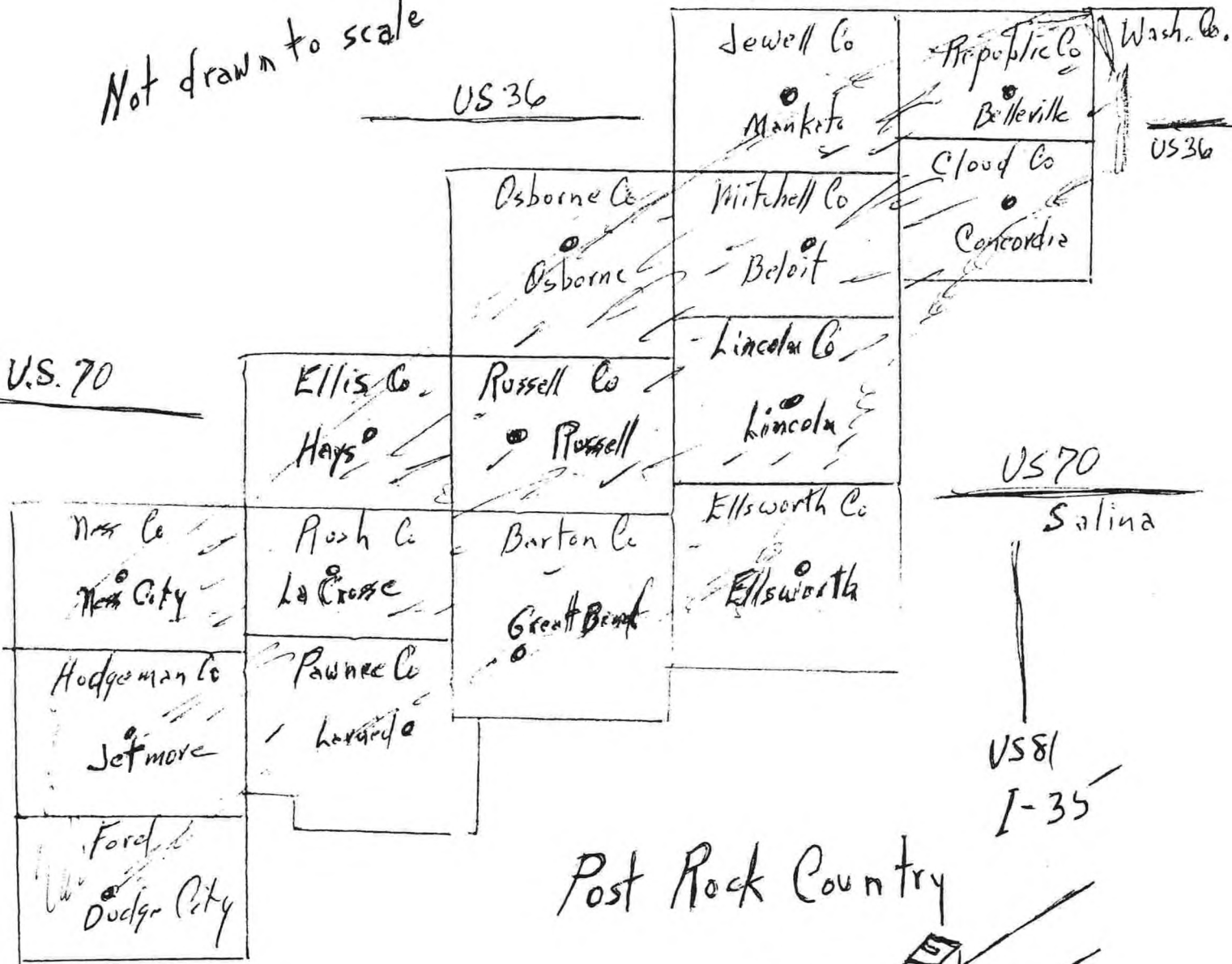
With use of driven steel posts and electric fences we understand there are lots of unused posts in the area - some even filtering into Wichita - and there's a Post Rock Road in Manhattan.

This is a very readable book and I believe you will be able to map out some interesting one or two day trips. Did you notice the approval of a massive ""POST ROCK RURAL WATER DISTRICT""? It wasn't called Kanopolis or Robert Dole!!!

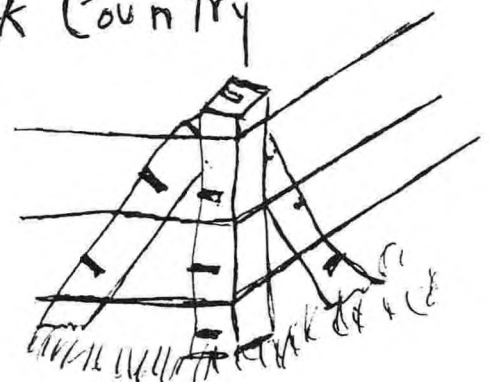
Not drawn to scale

US 36

Kansas-Nebraska Line



Post Rock Country



# GOING SNAKE DISTRICT MARRIAGES, CHEROKEE NATION 1880-1898

Continued from Vol. XVIII #4; published as they appeared in the Siloam Springs, Arkansas newspaper. Submitted by Mrs. Delores A. Mitts

|                      |  |                |
|----------------------|--|----------------|
| ROGERS - MEYERS      | John Rogers Kate Myers   | June 24, 1887  |
| THOMASON-ALBERTY     | W.H. Thomason, US citizen<br>Francis "Fanny" Alberty<br>Cherokee, dau. J. Alberty  | Jan. 1, 1887   |
| GRIGSBY-SIXKILLER    | William Grigsby, US citz.<br>Miss Sixkiller, Cherokee<br>(Ellen Sixkiller )  | Dec. 11, 1886  |
| GREEN-WILKIE         | R. Green, US citizen<br>Mary Wilkie, Cherokee  | Aug. 25, 1887  |
| WILLIS-MOTON         | Hugh Willis, US citz.<br>Esther Moton (Morton?)<br>Cherokee  | July 27, 1887  |
| SANDERS-MILLS        | John Sanders, 27, Cherokee<br>Elizabeth Mills, US citz.  | Sept. 23, 1887 |
| HOWARD-CLYNE         | Frank Howard, US citizen<br>Emily Clyne, Cherokee<br>(Howard came from Bridge-<br>port, Conn. owned first<br>store and was postmaster<br>at Barron.) | Sept. 27, 1887 |
| HORSESKIN-CORNTASSEL | Ned Horseskin, 21 and<br>Charlotte Corntassel, 18,<br>both Cherokees   | undated        |
| PERRIN-RIDER         | John Perrin, 18 and<br>Judy Rider, 16  | Feb. 24, 1887  |
| PIERCE(?)-PARRIS     | Richard Pierce (?) 20, and<br>Nannie Parris, 16  | March 3, 1887  |
| CORNTASSEL-CATCHER   | Widlock(?) Thomas Corn-<br>tassel, 25, and Malisse<br>Catcher, 20,   | Aug. 17, 1887  |
| WHITMIRE-STILL       | Walter (Samuel) Whitmire,<br>23, Eliza Stillwood, 17<br>(Walter Whitmire first<br>married Nanny Bushyhead)   | Oct. 16, 1887  |
| ALBERTY-AKINS        | J.V. ALBERTY and<br>Nannie Akins married by<br>Adam Lacie, Baptist min.  | Dec. 26, 1887  |
| SANDERS-BLACKWOOD    | George Sanders, 24,<br>Carlin Blackwood, 16  | Feb. 15, 1888  |
| HOUSELY-WILKEY       | Isaac M. Housely, US citz.<br>Elizabeth Wilkey (Wilkie)  | July 14, 1888  |
| PHILLIPS-MOORE       | John Phillips<br>Peakie(?) Moore, US citz.   | Feb. 13, 1887  |
| WILKERSON-SANDERS    | Joe Wilkerson and<br>Smandy(?) Sanders, both<br>Cherokees  | Undated        |
| BRANTLEY-WHITMIRE    | John Brantley, 28, US citz.<br>Elizabeth Whitmire, 31,<br>Cherokee   | Oct. 20, 1887  |
| CANNON-BELL          | W.L. Cannon, 26, and<br>Sharon Bell, 19  | Oct. 6, 1887   |

GOING SNAKE DISTRICT, CHEROKEE NATION/ Continued:

|                      |  |                   |
|----------------------|--|-------------------|
| MORRIS-PARKER        | V.C. Morris and Alice Parker were married at residence of W.L. Cannon                                | Jan. 3, 1888      |
| DUDLEY-FOREMAN       | J.C. Dudley, US citizen  | Dec. 15, 1887     |
| DENTON-GIBSON        | M.E. Foreman, Cherokee Charles S. Denton, Boone Co., Ark. married Myrlte E.L. Gibson, Wash. Co., Ark | May 20, 1888      |
| SHELL-MANAS          | Charlie Shell, 23 and Miss Manas   | Aug. 10.1888      |
| PAGGET-SIXKILLER     | James Pagget, US citizen Eliza Sixkiller, Cherokee   | June 3, 1888      |
| MITCHELL-WITT        | J.H. Mitchell, US citizen Mary Witt, Cherokee  | Aug. 9, 1888      |
| BARTON-LASLEY        | F.S. Barton, US citizen Mary V. Lasley, Cherokee   | Sept.6,1888       |
| HAMILTON-RANDOLPH    | James Monroe Hamilton, US citizen, L.? Randolph, Cherokee  | Oct. 27, 1888     |
| CATCHER-WALKINGSTICK | John Catcher, 26, and Susan Walkingstick   | Dec. 28, 1888     |
| THORNTON-SANDERS     | James Thornton, 22 N.J. Sanders, 15  | Jan. 7, 1888 (9)? |
| SCHENCHR?-TIERMSKI   | John Schenchr(?)30 and Anna Tiermski, 18   | undated           |
| GAMBLE-CRITTENDEN    | Henry Gamble(?)US citz. Minnie Crittenden  | Jan. 10, 1890     |
| PADEN-PARRIS         | Valentine Paden, US citz. Emma Parris, Cherokee  | Feb. 16, 1880     |
| CONNELEY-CRITTENDEN  | W.H. Connelly, US Citizen Stephanie Crittenden, Cherokee   | Aug. 2, 1889      |
| COSTON-WAGNON        | W.W. Coston, US citizen Margaret M. Wagnon, Cherokee   | March 11, 1888    |
| GORDON-FLETCHER      | William Gordon, US citizen Callie Fletcher, Cherokee   | Dec. 11, 1888     |
| PETTY-ROSS           | J.H. Petty, 21, US citizen Mary Ross, 19, Cherokee   | April 7, 1889     |
| NICHOLS-THOMAS       | James Nichols, 28 and Sarah Jane Thomas, 17  | July 8, 1889      |
| McGEE-ROADY          | W.F. McGee, 22 and D.E. Roady, 18 both were both citizens Wash. Co. Ark                              | March 9, 1889     |
| CATES-HOLT           | T.A..Cates, US citizen Emma C. Holt, Cherokee  | Aug. 23, 1889     |
| MAPLES-MISSER?       | A.L. MAPLES,US citizen Rachel Misser (?)Cherokee   | Oct. 14, 1889     |
| DUDLEY-CRITTENDEN    | H. E. Dudley, US citizen Palmarah Crittenden, Cher.  | March 20, 1890    |
| SMITH-DUAS(?)        | T.M. Smith, 25 Lucy Duas (?)both US citizens   | March 16, 1890    |
| McGEE-BOLES          | J.M. McGee, 21 and Lou Boles, 20   | March 16, 1890    |

GOING SNAKE DISTRICT MARRIAGES, CHEROKEE NATION/ continued:

|                   |  |                |
|-------------------|--|----------------|
| SIXKILLER-ENGLAND | Taylor Sixkiller, 22<br>Emma England, 13   | April 6, 1890  |
| DUGGER-WATTS      | Lincoln Dugger, 25 and<br>Martha Watts, both Cherokee  | April 13, 1890 |
| HART-GLENN        | L. R. Heart (Hart) US citiz.<br>Susi Glenn, Cherokee   | July 14, 1889  |
| ENGLAND-PHEASANT  | Tillmon ENGLAND 19<br>Millie Pheasant, 15  | undated        |
| OWENS-SPEAR       | Freemont Owens and<br>Susan Caroline Spears<br>both US Citizens  | March 18, 1890 |
| LEE YOUNGWOLF     | Josiae Lee, 28 and<br>Taky Youngwolf, 18,<br>both Cherokee (?)   | March 21, 1886 |
| PERLONE -THORNTON | James Perlone, 18,<br>Elizabeth Thornton, 19.  | Jan. 11, 1887  |
| CHANCE-PHILLIPS   | Tillmon Chance, US citizen<br>Maggie Phillips, Cherokee<br>(Chance became Postmaster<br>of Chance P.O. 1897) | Feb. 19, 1887  |
| WHITMIRE-WRIGHT   | E.H. Whitmire, 28<br>Mary Wright, 31 both<br>Cherokees   | Aug. 3, 1886   |
| HOLLAND-ALBERTY   | Grant Holland, 19<br>Elizabeth Alberty, 18   | Dec. 25, 1886  |

These marriages based on research by Virgil Talbot. Some of the persons issuing licenses or marrying the above were, J.R.Wright, Nathan Renshaw West and several brothers were Methodist ministers. (uncle of Virgil Talbot's wife Avis West Talbot), Joseph Smallwood William David, minister, Rev. C.M. Green, Ed Foreman, Judge, John Virgil McPherson, Judge, Norman Glasgow, minister.

---

DID YOU KNOW ???

.....That hunter Memorial library, Western Carolina University, Cullowhee, NC 28723, has microfilmed copies of 10,000 Cherokee Indian Documents from the archives of Mexico & Spain, France & Canada, England & Scotland - all available on interlibrary loan?

---

TO THE MEMBERSHIP

If you know of the death of a member of Midwest Historical & Genealogical Society please call one of our Board members. They are all listed on the inside front cover of this issue. It is our policy to place a book in the library as a memorial to the deceased member.

---

FUNERALS IN THE REGISTERS OF  
A.G. MUELLER, FUNERAL DIRECTOR  
COLWICH, KANSAS

ABBREVIATIONS USED:

|   |                      |    |                     |
|---|----------------------|----|---------------------|
| N | Name of Deceased     | D  | Date of Death       |
| R | Late Residence       | B  | Date of Burial      |
| A | Age                  | F  | Location of Funeral |
| C | Cause of Death       | PB | Place of Burial     |
| P | Certifying Physician | BT | Bill Funeral To     |

Funeral Number

- 1      N-Nettie Isabella Baehr   R-126 N. Topeka Ave.  
A-5 years 11 months 6 days C-Scarlet Fever, membranous  
croup P-B.J. Coldwell D-January 30, 1889 B-February  
1, 1889 F-House PB-Catholic Cemetery BT-J.F. Baehr
- 2      N-Frank Brewer   R-Wichita Heights A-2 years C-Membranous  
Croup P-Maxeon D-February 23, 1889 B-February 24, 1889  
PB-Mount Hope Cemetery BT-W.N. Brewer
- 3      N-Millard Sevens   R-618 N. Topeka Ave A-78 years 10 months  
4 days P-W.A. Jordan D-March 23, 1889 F-House  
PB-Braceville, Ohio BT-N.O. Sevens
- 4      N-Amanda E. Safewright   R-City Hospital A-22 years  
C-Consumption P-F.W. Whitlock D-March 31, 1889  
B-April 2, 1889 F-City Hospital PB-Highland Cemetery,  
Potters Field BT-R.E. Guthrie Sr.
- 5      N-Charles Hyde   R-Colwich, Kansas A-89 years D-April 1,  
1889 B-April 2, 1889 F-House PB-Colwich Cemetery  
BT-C.F. Hyde
- 6      N-\_\_\_\_\_ Fuqua   R-Wichita Heights A-3 months C-Measles  
P-Bartly D-April 2, 1889 B-April 3, 1889 PB-Dunkard  
Cemetery BT-Jessie Fuqua
- 7      N-Wm. Sexton   R-628 N. Market St. A-79 years D-April  
8, 1889 BT-Jane Sexton
- 8      N-\_\_\_\_\_   R-711 Ida Ave C-Stillborn D-April 16, 1889  
BT-D. Cobb
- 9      N-Robert Patterson   R-350 N. Topeka Ave A-67 years  
C-Heart Disease P-C.C. Furley D-June 12, 1889  
F-House PB-Adelphia, Ohio BT-Geo. E. Campbell
- 10     N-J.F. Hutchinson   R-Kiowa, Kansas A-62 years P-W.F.  
Walker D-September 17, 1889 PB-Kiowa, Kansas Cemetery  
BT-Mrs. M.E. Hutchinson

- 11        N-Susy Doyal   R-Colwich,Kansas   A-10 days   P-W.F.  
Walker   D-December 29, 1889   B-December 29, 1889  
F-House   PB- Colwich Cemetery
  
- 12        N-Susy Lies   R-Colwich,Kansas   A-2 years 10 months  
C-Diphtheria   P-Newhauff   D-January 9, 1890  
B-January 11, 1890   F-House   PB-St. Marks Cemetery  
BT-N.P. Lies
  
- 13        N-        Smith   R-Eldridge,Kansas   A-1 month   P-Zenner  
D-January 20, 1890   B-January 21, 1890   F-House  
PB-Colwich,Kansas   BT-A.L. Smith
  
- 14        N-Cordelia Vickers   R-Colwich,Kansas   A-15 years  
6 months 15 days   C-La Grippe   P-Hunter   D-February  
1, 1890   B-February 2, 1890   F-Methodist Church  
PB-Colwich Cemetery   BT-J.P. Vickers
  
- 15        N-Nellie Patterson   R-Eldridge,Kansas   A-27 years  
C-Consumption   P-Walker   D-February 5, 1890   B-February  
7, 1890   F-House   PB-Colwich Cemetery   BT-John Patterson
  
- 16        N-Susy Scott   R-Park TWP, Maize, Kansas   A-4 years  
C-Congestive Chills   P-W.F. Walker   D-March 19, 1890  
B-March 20, 1890   PB-3 miles east of Maize, Kansas  
BT-Henry Scott
  
- 17        N-Noah Evens   R-Colwich,Kansas   A-6 months 22 days  
C-Spinal Meningitis   P-W.F. Walker   D-March 26, 1890  
4 pm   B- March 27, 1890 3 pm   F-House   PB Colwich, Kansas  
BT-R.J. Evens
  
- 18        N-        Howell   R-Maize, Kansas   A-0 days   C-Stillborn  
P-Hunter   D-April 7, 1890   B-April 8, 1890   PB-Maize  
Cemetery   BT-A. Howell
  
- 19        N-Charlie Yahn(Yalm)   R-St. Mark, Kansas   A-7 months  
C-Spinal Meningitis   P-Zenner   D-May 16, 1890   B-May  
17, 1890   F-Church   PB-St. Mark   BT-Chas. Yahn(Yalm)
  
- 20        N-Jennie M. Lewis   R-Concord, Kansas   A-33 years 3 months  
10 days   C-Nervous Exhaustion   P-Potter   D-June 21, 1890  
B-June 22, 1890   F-House   PB-Colwich Cemetery
  
- 21        N-Guy W. Brink   R-Concord, Kansas   A-1 year 7 months 23  
days   C-Measles   P-W.F. Walker   D-June 25, 1890   B-June  
26, 1890   F-House   PB-Colwich Cemetery   BT-E.F. Brink
  
- 22        N-Claud Thorp   R-Andale, Kansas   A-3 months   C-Congestion  
of Brain   P-Potter   D-July 17, 1890   B-July 18, 1890  
F-Christian Church   PB-Mt. Hope Cemetery   BT-H.J. Thorp
  
- 23        N-Nicklous Blick   R-Colwich, Kansas   A-1 year 11 months  
P-Zenner   D-July 28, 1890 9am   B-July 29, 1890   8am  
F-St. Marks Church   PB-St. Marks Cemetery

- 24        N-Henreatta Davis   R-Colwich,Kansas   A-15 years  
P-W.F. Walker   D-July 30, 1890   B-July 30, 1890  
2 pm   PB-Colwich Cemetery   BT-M.C. Davis
- 25        N-Roy VanHorn   R-Colwich,Kansas   A-9 months 23 days  
C-Cholera Infantum   P-Potter   D-August 12, 1890  
B-August 13, 1890   F-House   PB-Colwich Cemetery  
BT-Sowell VanHorn
- 26        N-James S. Imbler   R-Colwich,Kansas   A-25 years 5 months  
22 days   C-Typhoid Malaria   P-Goddard of Sedgwick  
D-September 2, 1890   B-September 3, 1890   F-House  
PB-Colwich Cemetery   BT-W. Imbler
- 27        N-Siras S. Hoke   R-Union Town   A-30 years 5 months  
12 days   C-Consumption   P-Walker   D-September 9, 1890  
12:05 am   B-September 10, 1890 10 am   F-Colwich Church  
PB-Colwich Cemetery
- 28        N-Jennie Tedmond   R-Denver,Colorado   A-28 years 8 months  
C-Typhoid Fever   P-F.A. Norman   D-September 16, 1890  
B-September 17, 1890   F-M.E. Church   PB-Colwich Cemetery
- 29        N-Mat E. Clasen   R-St. Mark, Kansas   A-6 months  
C-Dysentery   P-Sippy   D-October 1, 1890   B-October 2,  
1890   F-St. Mark's Church   PB-St. Mark's Cemetery  
BT-Christ. Clasen
- 30        N-Chas. Yahn(Yalm)   R-St. Mark,Kansas   A-30 years  
P-Zenner   D-Novemner 25, 1890   B-November 27, 1890  
F-House   BT-Mrs. Chas. Yalm
- 31        N-S.W. Howell   R-Maize,Kansas   A-45 years 3 months  
3 days   C-Dropsy   P-Hunter   D-December 11, 1890  
B-December 12, 1890   F-House   PB-Colwich Cemetery  
BT-A.V. Howell
- 32        N-William B. McConnell   R-Concord,Kansas   A-38 years  
C-Pneumonia   P-Dwight   D-January 18, 1891   B-January  
20, 1891   F-Schoolhouse   PB-Colwich Cemetery
- 33        N-(Parent) Ed. Stroble   R-Colwich,Kansas   C-Stillborn  
P-W.F. Walker   D-March 20, 1891   B-March 21, 1891  
PB-Colwich Cemetery
- 34        N-Mary Elisa Armstrong   R-Colwich,Kansas   A-44 years  
10 months 9 days   P-W.F. Walker   D-May 22, 1891   B-May  
24, 1891   F-Christian Church,Andale   PB-Mt. Hope Cemetery
- 35        N-Annie Mary Heimerman   R-Seward County,Kansas   A-43 years  
C-Dropsy   P-Whitlock   D-April 22, 1887   B-June 8, 1891  
F-St. Mark's Church   PB-St. Mark's Cemetery
- 36        N-John Summerheuser   R-Garden Plain,Kansas   A-89 years  
22 days   C-Heart Disease   P-Sippy   D-July 12, 1891  
B-July 13, 1891   F-St. Marys Church   PB-St. Marys Cemetery  
BT-Peter Summerheuser



- 37        N-Jacob Busch   R-Colwich,Kansas   A-7 months  
P-Zenner   D-July 21, 1891   B-July 23, 1891   F-St.  
Mark's Church   PB-St. Mark's Cemetery   BT-Matt. Busch
- 38        N-(Parent) Joe Smarsh   R-St. Mark,Kansas   C-Stillborn  
P-Zenner   D-August 3, 1891   B-August 4, 1891   F-St.  
Mark's Church   PB-St. Mark's Cemetery
- 39        N-Harry Loomis   R-Garden Plain, Kansas   A-1 year 6 months  
(died at Colwich)   P-Walker   D-September 14, 1891  
B-September 15, 1891   F-House   PB-Garden Plain Cemetery  
BT-O.S. Loomis
- 40        N-Lenard Howe   R-Bentley,Kansas   A-1 year 1 month  
C-Typhoid Fever   P-J. Fressell   D-September 23, 1891  
B-September 23, 1891   F-House   BT-J.E. Howe
- 41        N-Stuart McNair   R-San Francisco, California   A-19  
years 4 months 30 days   C-Abscess of Brain   P-Geo.  
B. Sonery   D-November 6, 1891   F-November 7, 1891 at  
Colwich,Kansas   PB-Minneapolis, Minnesota   BT-Isaac McNair
- 42        N-Wm. Riley Suttan   R-Andale,Kansas   A-24 years   P-  
Potter   D-November 21, 1891   B-November 23, 1891  
PB-Goddard Cemetery   BT-F-Schmidt
- 43        N-Katie Z. Seinzen   R-St. Marys   A-67 years   C-Cancer  
P-Sippy of Garden Plain   D-December 23, 1891   B-  
December 24, 1891   F-St. Marys Church   BT-Joe Defembach
- 44        N-Henry Brand   R-Colwich,Kansas   A-65 years   C-Lung  
trouble   P-Newhauff   D-January 1, 1892   B-January 4, 1892  
F-St. Mark's Church   PB-St. Mark's Cemetery   BT-Joe Brand
- 45        N-Mary Glass   R-Colwich,Kansas   A-63 years   C-La Grippe  
P-W.F. Walker   D-January 24, 1892   B-January 26, 1892  
F-House   PB-Colwich Cemetery   BT-R. Glass
- 46        N-~~Emmaline~~ McAllister   R-Colwich,Kansas   A-77 years  
1 month 1 day   C-La Grippe   P-Walker   D-February 9,  
1892   B-February 10, 1892   F-M.E. Church   PB-Goddard  
Cemetery   BT-Homer McAllister
- 47        N-August Wilkus   R-St. Mark,Kansas   A-70 years   C-La  
Grippe   P-Zenner   D-February 27, 1892   B-March 1, 1892  
F-St. Mark's Church   PB-St. Mark's Cemetery   BT-Adam Wilkus
- 48        N-Magdalena Wilkus   R-St. Mark,Kansas   A-66 years 1 month  
C-La Grippe   P-Jno. Zenner   D-March 19, 1892   B-March  
22, 1892   F-St. Mark's Church   PB-St. Mark's Cemetery  
BT-Adam Wilkus
- 49        N-(Parent) B.M. Rush   R-Eldridge,Kansas   A-1 day   P-W.F.  
Walker   D-March 29, 1892   B-March 29, 1892   F-House  
PB-Colwich Cemetery   BT-B.M. Rush

- 50      N-Laurence Halsig R-St. Mark, Kansas A-44 years  
C-Consumption D-May 20, 1892 B-May 22, 1892  
F-St. Mark's Church PB-St. Mark's Cemetery  
BT-M. Heinrichs BT-Peter Strink
- 51      N-Rebecca Dennis R-Maize, Kansas A-80 years 9 months  
P-J.B. Hudson D-May 22, 1892 B-May 23, 1892  
F-Maize Church PB-Maize Cemetery BT-Jim Crocker
- 52      N-Frank Balthsar Wetta R-Sherman TWP A-3 months  
18 days C-Inflamation of Brain D-May 28, 1892  
B-May 29, 1892 F-St. Mary's Church PB-Aleppo  
Cemetery BT-Peter Lies
- 53      N-Minne Garcelon R-Colwich, Kansas A-26 years 4 months  
4 days C-Asthenia caused by childbirth P-John  
Zenner & W.F. Walker D-June 17, 1892 F-Methodist Church  
PB-Gibson, Illinois Cemetery BT-F.B. Garcelon
- 54      N-Sister Mary Alia R-Aleppo, Kansas A-28 years  
C-Consumption P-A.H. Boaning D-July 3, 1892 B-July 5, 1892  
F-St. Mary's Church PB-St. Mary's Cem. BT-Peter Gunelman
- 55      N-(Parent) Jacob Zonner R-St. Mark, Kansas A-1 month  
15 days C-Cholera Infantum P-Neuhauff D-July 25, 1892  
B-July 26, 1892 PB-St. Mark's Cemetery
- 56      N-Henry Sandwhere R-St. Mark, Kansas A-48 years C-Blood  
Poisoning P-Potter D-July 29, 1892 B-July 31, 1892  
F-St. Mark's Church PB-St. Mark's Cemetery  
BT-John B. Simon
- 57      N-Rosa Strunk R-St. Mark, Kansas A-4 months C-Summer  
Complaint P-Neuhauff D-August 8, 1892 B-August 10, 1892  
F-St. Mark's Church PB-St. Mark's Cemetery
- 58      N-Mary Schmidtmire R-St. Mark, Kansas A-7 months  
C-Fever by Teething P-Sippy D-August 9, 1892 B-August  
10, 1892 F-St. Mark's Church PB-St. Mark's Cemetery
- 59      N-Mathews Hilger R-Germania, Kansas A-80 years  
P-Neuhauff D-August 28, 1892 B-August 29, 1892 F-St.  
Mark's Church PB-St. Mark's Cemetery BT-Joe Hilger
- 60      N-Dinah Kellogg R-Concord, Kansas A-76 years C-Consumption  
of Lungs and Heart P-Potter D-September 19, 1892  
B-September 20, 1892 PB-Colwich Cemetery BT-J.D. Kellogg
- 61      N-Elizabeth Ellis R-Maize, Kansas A-62 years C-Dropsy  
P-Hudson of Maize D-October 28, 1892 B-October 29, 1892  
F-Maize Church PB-Maize Cemetery BT-Mary H. Singo of  
Maize
- 62      N-Frank Thome R-Germania, Kansas A-7 days C-Spasm  
P-Zenner D-December 11, 1892 B-December 12, 1892  
F-St. Mark's Church PB-St. Mark's Cemetery BT-John  
Thome

## BOOK REVIEWS

A BEDWELL FAMILY  
by Larry King

This book records fourteen generations of descendants from Robert Bedwell believed to have emigrated from England circa 1661. There are brief stories of each generation but the bulk of the text is a collection of vital statistics.

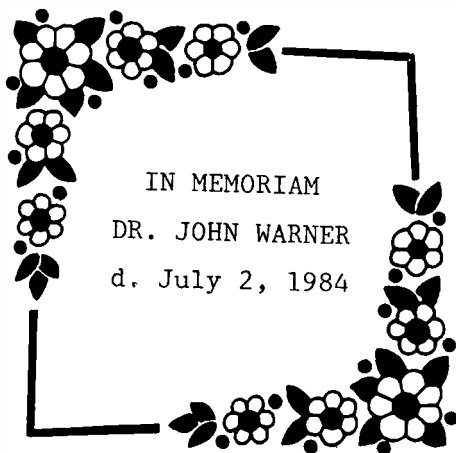
This 384 page cloth hard-bound book contains 143 photographs of both early & late generations with a 49 page full name index. There are over 2500 other surnames listed, many that are familiar to the Wichita vicinity. The print is small but the double column format helps. Little documentation is cited yet the work seems to have been carefully done. Enough information has been given that a researcher could prove or disprove if necessary.

"A Bedwell Family" would be a good reference addition to your library shelf. It is priced at \$25.00. Order from: Larry King, 100 Longview Dr., Hendersonville, TN 37075.

Mr. King has also published "Blue Ridge Mountain Kinfolks" & "Keith Kinfolks" & is now working on "Rector Family History".

This book has been donated to the M.H.G.S. library.

---



In remembrance of these faithful members books have been placed in the M.H.G.S. library. Mrs. Opal Wallis was the editor of the Register for the years 1978 & 1979.

---

## Block II

|                                |             |  |
|--------------------------------|-------------|--|
| 21 8 Armstrong, Bradford C.    |             | 15 FEB 1913  |
| 21 2 Armstrong, C. C.          | 12 MAY 1871 | 15 JUL 1955  |
| 21 1 Armstrong, Elmer B.       | 7 SEP 1859  | 30 JUL 1932  |
| 21 7 Armstrong, Martha K.      | 3 OCT 1838  | 15 AUG 1928  |
| 38 2 Anderson, Susan E. Boyden | 1866        | 2 FEB 1926 W/o D.M.Anderson<br>N.H.Cudworth                                  |
| 2 6 Beaman, Marinda Gragg      | 1841        | 13 MAR 1927  |
| 2 5 Beaman, Sammy              |             | 23 FEB 1920  |
| 24 7 Beardslee, Allan L.       | 27 OCT 1906 | 15 DEC 1967 KS T/Sgt 247 Base  |
| 24 6 Beardslee, Mary E.        | 31 MAR 1904 | 5 DEC 1980 Unit WW II  |
| 14 5 Benedict, E. Hubbell      |             | 24 MAY 1885 Pvt Newsons Co.  |
| 36 3 Bessette, Alan Dale       | 18 FEB 1951 | 25 JUL 1968, Womeldor's Mtd.   |
| 36 4 Bessette, Jr. Franklin    | 9 JUL 1935  | 5 SEP 1972 War of 1812, Ohio<br>KS GMCS US Navy<br>Korea, Vietnam<br>BSM-NCM |
| 45 2 Bottom, Bessie            | 4 MAR 1881  | 24 DEC 1944  |
| 45 1 Bottom, Ortho B.          | 25 SEP 1880 | 5 MAR 1977   |
| 38 8 Boyden, Daniel            | 10 SEP 1840 | 21 DEC 1898 GAR 73rd IL Inf.<br>Co. B  |
| 38 Boyden, Arthur              |             | 1 AUG 1885 S/o D. & S. Ellen   |
| 38 6 Boyden, Frank             |             | 21 NOV 1880 6y 7m 8d S/o D. &<br>Sarah A.                                    |
| 38 7 Boyden, Sarah A.          |             | 1 JAN 1879 31y 2m 26d<br>W/o Daniel (#1)                                     |
| 22 4 Briley, W. Bill           | 7 APR 1899  | 21 FEB 1967  |
| Briley, Edna L.                | 1 MAY 1901  |  |
| 27 3 Bula, Alice C.            | 1875        | 1942   |
| 27 2 Bula, Eliza Ann           | 26 MAY 1855 | 9 MAY 1923   |
| 27 4 Bula, Elza Levi           | 8 MAY 1884  | 30 AUG 1919  |
| 27 1 Bula, John Nice           | 23 MAY 1849 | 31 JAN 1916  |
| 61 1 Burroughs, Emma Parks     | 1876        | 27 AUG 1961  |
| 39 4 Bush, Helen Houston       | 16 JUN 1826 | 13 JAN 1896  |
| 39 3 Bush, Henry               | 16 NOV 1822 | 29 JAN 1895  |
| 25 8 Bush, Hiram F.            | 6 NOV 1850  | 23 OCT 1928  |
| 25 7 Bush, JeanetteMcNichols   | 27 DEC 1856 | 8 JUN 1933   |
| 39 1 Bush, John Elmer          | 1863        | 8 MAR 1946   |
| 39 2 Bush, Robert Henry        | 1866        | 7 NOV 1925   |
| 25 6 Bush, William H.          |             | 17 NOV 1897 S/o J.E.&H.F.<br>17y 11m<br>no stone                             |
| 40 Cartinian, N.               |             |  |
| 36 5 Clark, Dallas             |             | 6 MAR 1960   |

Benton Cemetery, Block II, continued

|                                |             |  |
|--------------------------------|-------------|--|
| 45 4 Claypool, Eva             | 6 MAY 1885  | 5 JUL 1971 nee Meyersick                                   |
| 45 3 Claypool, Fred C.         | 26 JUL 1885 | 23 NOV 1949  |
| 20 7 Coberly, Elias            | 30 JUL 1834 | 15 JUN 1907  |
| 20 6 Coberly, Emily            | 23 AUG 1832 | 11 FEB 1909 W/o Elias                                      |
| 32 Cochran, Pauline C.         |             | 8 JUN 1931   |
| 35 5 Coffman, James A.         | 10 OCT 1872 | 7 JUN 1959   |
| 17 4 Crabtree, Ernest          | 1885        | 1955   |
| 47 1 Cudworth, Daniel B., Sr.  | 29 DEC 1896 | 16 JUN 1972 KS Cpl Btry F<br>Fld Arty, WW I<br>1898 infant |
| 38 4 Cudworth, Hattie          |             |  |
| 38 1 Cudworth, Henry N.        | 1851        | 24 JUN 1909  |
| 47 2 Cudworth, Irene M.        | 1898        | 2 AUG 1983   |
| 38 3 Cudworth, Myrtle E.       | 1906        | 9 OCT 1956   |
| 8 8 Dickson, Bessie Mae        | 1890        | 21 FEB 1973  |
| 15 6 Dodge, Clinton M.         | 1852        | 24 OCT 1935  |
| 15 1 Dodge, George             | 21 AUG 1874 | 17 JAN 1969  |
| 15 2 Dodge, Mabel Susie        | 9 SEP 1885  | 17 FEB 1974 W/o George                                     |
| 15 5 Dodge, Loretta Claypool   | 1852        | 16 APR 1940  |
| 15 7 Dodge, Robert             | 27 JAN 1819 | 7 MAR 1914   |
| 15 8 Dodge, Willimina          | 21 DEC 1831 | 14 JUN 1895  |
| 29 8 Edson, Augustus           | 24 JAN 1891 | 22 APR 1963  |
| 29 6 Edson, Ernest G.          | 1852        | 27 AUG 1925  |
| 29 5 Edson, Lydia L.           | 1858        | 1948   |
| 30 6 Fisher, Ernest F.         | 1866        | FEB 1938   |
| 30 7 Fisher, Hattie May        | 1870        | 17 JUL 1926  |
| 30 8 Fisher, Virgil E.         | 1894        | 31 JAN 1920  |
| 12 8 Frederiksen, Christin     | 20 FEB 1846 | 9 AUG 1920   |
| 12 7 Frederiksen, Eliza Evelyn | 10 SEP 1858 | 16 FEB 1932  |
| 22 7 Friend, Flora L.          | 10 MAR 1895 | 8 NOV 1965 W/o Howard F.                                   |
| 22 8 Friend, Howard F.         | 13 SEP 1895 | 8 AUG 1980   |
| 22 6 Friend, Howard D.         | 24 MAY 1924 | 9 JUL 1978 F3 US Coast Guard<br>WW II                      |
| 22 1 Friend, Lare Dean         | 13 AUG 1855 | 2 FEB 1944   |
| 22 2 Friend, Mary Ann          | 10 OCT 1861 | 1 AUG 1949   |
| 1 5 Garlick, Cora A.           | 1879        | 1963   |
| 1 1 Garlick, Emma L.           | 28 FEB 1882 | 17 MAY 1884  |
| 1 2 Garlick, Amelia A.         |             | 4 MAR 1895 W/o Oscar                                       |
| 1 3 Garlick, Oscar             |             | 26 JAN 1920  |
| 1 4 Garlick, Ernest Chancy     | 3 SEP 1887  | 15 JAN 1913  |
| 1 6 Garlick, Floyd W.          | 1875        | 16 MAY 1965  |
| 1 Garlick, Leonard H.          | 16 NOV 1890 | 21 OCT 1918  |

Benton Cemetery, Block II, continued

|                          |             |   |
|--------------------------|-------------|---|
| 11 2 Gragg, Cleona C.    | 7 APR 1897  | 20 FEB 1936                                     |
| 44 1 Gragg, Eldo Glenn   | 1899        | 20 AUG 1955                                     |
| Gragg, Katie E.          | 1905        |   |
| 44 4 Gragg, Laura E.     | 31 MAR 1872 | 12 NOV 1944                                     |
| 11 7 Gragg, Lee Davis    | 1869        | 2 FEB 1927                                      |
| 11 1 Gragg, Maud E.      | 1888        | 26 JUL 1962                                     |
| 11 8 Gragg, Paul W.      | 1908        | 10 MAY 1932                                     |
| 2 7 Gragg, Wm. P.        | 24 OCT 1859 | 9 APR 1942                                      |
| 9 6 Green, Howard        | 1857        | 1858 C/o L. & M.A.                              |
| 9 7 Green, Lorenzo       | 18 JUL 1834 | 14 APR 1919 GAR                                 |
| 9 6 Green, Mary A.       | 29 SEP 1831 | 23 JAN 1908                                     |
| 9 5 Green, Olive         | 1859        | 1862 C/o L. & M.A.                              |
| 33 7 Guinty, Clarence E. | 1904        | 6 FEB 1936                                      |
| 33 5 Guinty, Edith       | 2 NOV 1888  | 6 DEC 1955                                      |
| 33 6 Guinty, Irvin M.    | 14 FEB 1880 | 4 JAN 1949 KS Pvt 40 US Vol<br>Inf              |
| 33 3 Guinty, Lawrence J. | 1906        | 19 DEC 1971                                     |
| Guinty, Merle L.         | 1907        | W/o L.J.  |
| 46 Henderson, Walter H.  | 1876        | 6 JAN 1964                                      |
| 46 Henderson, Katie M.   | 1876        | 27 DEC 1965                                     |
| 2 Howard, E. J.          |             | 25 NOV 1919                                     |
| 28 8 Hoyle, Warren       | 1886        | 17 MAR 1961                                     |
| 35 8 Irby, Wm. J., M.D.  | 1896        | 14 APR 1948                                     |
| 1 8 Johnson, Charley A.  |             | S/o H.F. & C.                                   |
| 22 5 Joy, Inez M. Friend | 20 AUG 1898 | 7 JUN 1980                                      |
| 23 7 Kasenberg, Fredrick | 17 SEP 1904 | 9 JUN 1978 M. 2 AUG 1931                        |
| Kasenberg, Edith Ruby    | 17 SEP 1904 |   |
| 5 4 Kehn, Maude L.       | 8 JAN 1874  | 7 OCT 1920 W/o Henry A.                         |
| 3 3 Kipers, Dora         | 1890        | 7 FEB 1918 W/o Tony                             |
| 3 4 Kipers, Hazel Belle  | 1900        | 2 JAN 1919                                      |
| 3 1 Kipers, Joseph H.    | 4 DEC 1861  | 16 JAN 1916                                     |
| 3 2 Kipers, Rena Bonham  | 1865        | 1949  |
| 46 Knight, Annie M.      | 1871        | 3 JAN 1961                                      |
| 46 Knight, James L.      | 1870        | 22 JAN 1947                                     |
| 49 Kramback, Mary Jo     |             | 22 OCT 1946                                     |
| 27 5 Marshall, Clara May | 29 SEP 1877 | 21 JUL 1951                                     |
| 27 6 Marshall, Hiram D.  | 28 OCT 1869 | 13 JAN 1913                                     |
| 27 7 Marshall, Susie May | 14 SEP 1907 | 19 JAN 1908 D/o H.D. & C.M.                     |
| 5 3 McBride, C. H.       | 3 NOV 1879  | 29 JAN 1901 Co.M 44 Regt.<br>USV Spanish Am.War |

Benton Cemetery, Block II, continued

|                             |             |                                |
|-----------------------------|-------------|--------------------------------|
| 6 1 McBride, George         | 10 SEP 1804 | 9 SEP 1880                     |
| 6 2 McBride, Jane           | 6 APR 1809  | 30 OCT 1892 W/o Geo.           |
| 5 2 McBride, Margaret M.    | 1842        | 2 JUL 1915                     |
| 5 1 McBride, William A.     | 1837        | 1887 Co. L 4th IND<br>Cav. GAR |
| 6 3 McBride, Robert Blean   | 4 NOV 1838  | 3 FEB 1917                     |
| 6 4 McBride, Walter E.      |             | 29 AUG 1878 Age 18d            |
| 1 7 McGrew, Ronald Eugene   |             | 1 SEP 1931                     |
| 16 5 McMahan, John          | 10 DEC 1827 | 27 MAY 1900 Bro/o Sarah Parks  |
| 31 2 Melick, Charlie E.     | 1864        | 25 MAY 1952                    |
| 31 1 Melick, L. Dell        | 1874        | 9 MAY 1935                     |
| 36 8 Middleton, James S.    | 1879        | 2 JAN 1973                     |
| 36 7 Middleton, Lula E.     | 1885        | 30 MAY 1977                    |
| 12 4 Miller, Dorothy Lee    | 7 JAN 1931  | 16 JUN 1931                    |
| 12 3 Miller, Viola D.       | 2 JUL 1898  | 31 DEC 1975                    |
| 24 4 Minor, Gayle C.        | 1898        | 22 AUG 1978 Pvt US Army WW I   |
| 24 6 Minor, Lucy A.         | 14 JUL 1878 | 25 MAY 1950                    |
| 24 3 Minor, Mary            | 28 JAN 1896 | 20 OCT 1977                    |
| 24 5 Minor, Willis B.       | 26 JUN 1871 | 2 MAR 1951                     |
| 41 2 Moots, E. W.           | 9 NOV 1901  | 14 SEP 1982 M. 16 OCT 1927     |
| Moots, Bessie M.            | 13 DEC 1904 |                                |
| 41 7 Moots, Harve Lee       | 1887        | 27 DEC 1968                    |
| 41 6 Moots, Lottie          | 1890        | 14 JUN 1978                    |
| 3 6 Mullins, Bill           |             | 9 OCT 1931                     |
| 3 3 Mullins, Doris O.       |             | 19 DEC 1915                    |
| 3 8 Mullins, Mary Emma      |             | 25 FEB 1930                    |
| 3 5 Mullins, Tresie Lee     |             | 8 AUG 1900                     |
| 3 7 Mullins, Henry C.       | 25 JUN 1856 | 12 DEC 1926                    |
| 32 1 Newhall, Chauncey P.   | 1883        | 12 JAN 1952                    |
| 32 2 Newhall, Gertie M.     | 1885        | 13 MAR 1952                    |
| 43 1 Nichols, Virginia L.   | 27 MAR 1924 | 17 MAR 1925                    |
| 43 4 Nichols, Hugh Clinton  | 18 JUN 1889 | 20 MAY 1971                    |
| 43 3 Nichols, Mary Elsie    | 5 DEC 1892  | 28 JUN 1961                    |
| 43 2 Nichols, Vivian Lee    | 16 DEC 1925 | 14 JUN 1936 D/o Mary Claypool  |
| 5 5 Nicol, Jennie McBride   | 21 JAN 1869 | 12 FEB 1935 W/o Frank          |
| 31 7 Overholt, Lucy Carolyn | 1889        | 30 AUG 1972 W/o Geo.B.Wallace  |
| 17 5 Parks, Curtis P.       | 1878        | 29 APR 1966                    |
| 17 7 Parks, Eunice          | 23 NOV 1902 | 9 MAR 1904 C/o C.P. & L.E.     |
| 16 3 Parks, Harvey Garfield | 7 JUN 1880  | 4 APR 1970                     |

Benton Cemetery, Block II, continued

|                              |             |             |                         |
|------------------------------|-------------|-------------|-------------------------|
| 16 3 Parks, James            | 25 SEP 1841 | 12 FEB 1926 | Co.D,106 IL Inf.        |
| 16 2 Parks, Jennette         | 16 DEC 1836 | 13 JUL 1915 | GAR                     |
| 16 7 Parks, James E.         |             | 19 APR 1879 |                         |
| 17 6 Parks, Luna             |             | 18 MAY 1959 |                         |
| 16 4 Parks, Mary A.          |             | 14 JAN 1885 | Age 74y                 |
| 16 6 Parks, Sarah McMahon    | 13 DEC 1839 | 24 MAR 1902 |                         |
| 17 1 Parks, Velma            | 1907        | 1923        |                         |
| 17 8 Parks, Wilbert Otis     | 1 JUL 1905  | 27 JUN 1907 |                         |
| 10 6 Perry, John W.          |             | 26 JUN 1926 |                         |
| 10 8 Perry, Joseph L.        | 10 OCT 1822 | 7 MAR 1908  |                         |
| 10 7 Perry, Margaret         | 26 FEB 1826 | 9 SEP 1893  | W/o Joseph L.           |
| 11 5 Potter, Chas B.         | 1860        | 14 JUL 1921 |                         |
| 40 4 Ralph, Alpha Rose       |             | 2 SEP 1970  |                         |
| 40 3 Ralph, Ira Morris       |             | JUL 1936    |                         |
| 6 6 Ramsay, Lynn             |             | 29 NOV 1903 | S/o L. P.               |
| 6 5 Ramsay, Harriett B.      | 9 JUN 1860  | 12 AUG 1919 |                         |
| 6 7 Ramsay, Mary McBride     | 6 JAN 1835  | 18 JAN 1899 | W/o Wm.                 |
| 6 8 Ramsay, Wm.              | 12 FEB 1831 | 7 MAR 1914  | Co.L,4th IN Cav.<br>GAR |
| 13 6 Richards, Geo. W.       | 25 APR 1854 | 25 AUG 1921 |                         |
| 13 2 Richards, Ida M.        | 1885        | 16 JAN 1984 |                         |
| 13 5 Richards, John W.       | 1884        | 1949        |                         |
| 13 7 Richards, Mary Susan    | 10 DEC 1859 | 23 SEP 1942 | W.o Geo. W.             |
| 13 3 Robbins, Fred J.        | 1917        | 7 APR 1980  |                         |
| 13 4 Robbins, Zena Francis   | 1921        | 23 JUN 1975 |                         |
| 11 3 Rodden, Ed              | 23 JAN 1873 | 23 MAR 1920 | b. Sherman,TX           |
| 5 Roy, Matilda               | 31 AUG 1836 | 14 MAR 1913 | W/o Capt.JohnRoy        |
| 2 1 Schmidt, John            | 1855        | 6 JUN 1913  |                         |
| 35 6 Schopf, Rev. Harry H.   | 1883        | 9 SEP 1956  |                         |
| 35 7 Schopf, Maybel M.       |             | 30 DEC 1961 | W/o Wm.J.Irby,M.D.      |
| 4 6 Simmons, Adda B.         | 1858        | 10 JAN 1948 |                         |
| 4 7 Simmons, Bertice         | 1872        | 1 MAY 1959  | W/o Adda B.             |
| 4 3 Simmons, Jefferson Davis | 1848        | MAR 1939    |                         |
| 4 4 Simmons, Rebecca         |             | 29 MAR 1946 |                         |
| 26 7 Slusser, Lewis C.       | 7 SEP 1847  | 9 OCT 1917  |                         |
| 26 6 Slusser, Martha E.      | 1854        | 15 JAN 1937 |                         |
| 24 8 Slusser, Paul E.        |             | 11 JUL 1941 |                         |
| Slusser, R. Lee              | 9 JUN 1910  |             | W. 1 JUL 1931           |
| Slusser, W. Pauline          | 30 OCT 1915 |             |                         |
| 26 1 Slusser, Richard H.     | 1896        | 1941        |                         |



Benton Cemetery, Block II continued

|                             |             |                           |
|-----------------------------|-------------|---------------------------|
| 37 7 Smith, Agnes           | 29 NOV 1837 | 1 OCT 1912                |
| 37 8 Smith, Squire          | 18 JUL 1837 | 8 NOV 1912 GAR            |
| 25 5 Snyder, Ella Christine | 1878        | 8 APR 1931 W/o L.         |
| 48 2 Stark, Eva             | 1876        | 1967                      |
| 48 1 Stark, Wm. Henry       | 1871        | 1954                      |
| 28 6 Stephens, Elijah J.    | 1856        | 10 MAY 1923               |
| 28 5 Stephens, Serena E.    | 1858        | 1952                      |
| 18 7 Stewart, Charles H.    | 9 DEC 1843  | 19 AUG 1904 GAR           |
| 18 6 Stewart, Rachel E.     | 22 SEP 1849 | 9 JUN 1923 W/o Charles H. |
| 18 1 Stewart, Tressa        | 1871        | 1954                      |
| 18 2 Stewart, Walter C.     | 24 MAY 1870 | 14 APR 1913               |
| 14 7 Taylor, August         |             | No stone                  |
| 14 1 Taylor, John H.        |             | 7 AUG 1884 S/o M.J. & C.  |
| 8 6 Teninty, Boyd F.        | 1923        | 1925                      |
| 8 7 Teninty, Lewellyn Lee   | 1882        | 5 JUN 1926 or Painter ?   |
| 8 5 Teninty, Wallace Grant  |             | 7 MAR 1977 Cremains       |
| 34 6 Vachal, James          | 1870        | 20 SEP 1946               |
| 34 6 Vachal, Mary           | 1882        | 5 JAN 1974                |
| 24 2 Van Y, Dorcas Eunice   | 5 JUN 1895  | 20 MAR 1968               |
| 24 1 Van Y, Pearl W.        | 18 APR 1894 | 10 JUN 1962               |
| 31 6 Wallace, George B.     | 1884        | 1929                      |
| 21 5 Ward, Alice Anna       | 1864        | 6 FEB 1947                |
| 21 6 Ward, Purl W.          | 1861        | 1924                      |
| 19 7 Waterson, George M.    | 7 JUL 1855  | 29 NOV 1906               |
| 19 8 Waterson, Joseph E.    | 14 MAY 1886 | 10 MAY 1967               |
| 19 6 Waterson, Mary D.      | 11 JAN 1862 | 24 MAR 1953               |
| 7 8 Wintermote, Clifford    | 13 OCT 1917 | 13 DEC 1922               |
| 7 7 Wintermote, Grace       | 1883        | 10 FEB 1958               |
| 7 6 Wintermote, Lee Roy     | 1881        | 10 MAR 1964               |
| 5 6 Winegarner, Anna F.     | 1867        | 2 APR 1948                |
| 5 8 Winegarner, Dennis L.   | 1866        | 2 FEB 1943                |
| 5 7 Winegarner, Vernon      | 13 MAR 1892 | 3 FEB 1908                |
| 42 7 Wisecarver, Henry Wm.  | 26 AUG 1891 | 29 AUG 1928               |
| 42 6 Wisecarver, James B.   | 9 NOV 1856  | 21 JAN 1931               |
| 42 1 Wisecarver, Carl Ray   | 14 JUL 1896 | 9 FEB 1952                |
| 40 Wood, Mary Edith         |             | 12 JUL 1926               |
| 40 Wood, William C.         |             | 1 JUN 1895                |
| 40 Wood, Myron S.           |             | 25 DEC 1964               |

## MARRIAGES IN SEDGWICK COUNTY KANSAS

| PAGE | GROOM                 | RESIDENCE          | AGE | BRIDE                   | RESIDENCE        | AGE | APPLI. | MARRIAGE     |
|------|-----------------------|--------------------|-----|-------------------------|------------------|-----|--------|--------------|
| D344 | Henry W.L.            | NONE ISSUED HERE   |     |                         |                  |     |        |              |
| D345 | George P. Law         | Wichita,KS         | 36  | Pearl Jones             | Wichita,KS       | 16  | 17 Jul | 17 Jul 1888* |
| D345 | S.O. Carpenter        | Bayneville,KS      | 35  | Edna C. Wright          | Bayneville,KS    | 23  | 17 Jul | 9 Aug 1888*  |
| D346 | Edward Ommer          | Wichita,KS         | 23  | Mina Hierman            | Wichita,KS       | 27  | 18 Jul | 21 Jul 1888* |
| D346 | Edwin W. Enos         | Wichita,KS         | 50  | Mrs. A. Rose Sternburg  | Wichita,KS       | 38  | 21 Jul | 21 Jul 1888* |
| D347 | W.G. Lapham           | Wichita,KS         | 21  | Florence Bell Clairmont | Wichita,KS       | 18  | 18 Jul | 19 Jul 1888* |
| D347 | J.A. Wylie            | Wichita,KS         | 24  | Ines Courtney           | Wichita,KS       | 18  | 21 Jul | 21 Jul 1888* |
| D348 | W. Dietrich           | Wichita,KS         | 27  | Laura Harper            | Wichita,KS       | 19  | 23 Jul | 24 Jul 1888* |
| D348 | Henry S. Oldfield     | Wichita,KS         | 20  | Alice Pollock           | Wichita,KS       | 20  | 25 Jul | 25 Jul 1888* |
| D349 | George B. Stockert    | Wichita,KS         | 32  | M.J. Young              | Wichita,KS       | 18  | 26 Jul | 26 Jul 1888* |
| D349 | Wallace E. Husted     | Latham,KS          | 26  | Emma M. Sutherland      | Humansville,MO   | 17  | 27 Jul | 27 Jul 1888* |
| D350 | Harry L. Kreis        | Monticello,MN      | 25  | Cora E. Helm            | Monticello,MN    | 22  | 28 Jul | 1 Aug 1888*  |
| D350 | Edward Davis          | Bayneville,KS      | 33  | Eva McDonald            | Bayneville,KS    | 25  | 28 Jul | 28 Jul 1888* |
| D351 | S.D. Acree            | Madison,IN         | 34  | Stella Davis            | Wichita,KS       | 30  | 1 Aug  | 1 Aug 1888*  |
| D351 | Chas. Sherman Groff   | New York,NY        | 51  | Emma A. Densmore        | Wichita,KS       | 46  | 31 Jul | 31 Jul 1888* |
| D352 | Lincoln Hellar        | Derby,KS           | 23  | Della Bell              | Derby,KS         | 21  | 1 Aug  | 1 Aug 1888*  |
| D352 | Harry Arthur Dennison | Wichita,KS         | 19  | Josie Alexander         | Wichita,KS       | 24  | 3 Aug  | 4 Aug 1888*  |
| D353 | Hubert Kiernen        | Nebraska City,NE   | 36  | Annie Shenley(hanley)   | Reno CO,KS       | 30  | 4 Aug  | 8 Aug 1888*  |
| D353 | G.P. Andrews          | Wichita,KS         | 49  | M.J. Lillard            | Wichita,KS       | 40  | 4 Aug  | 12 Aug 1888* |
| D354 | A.C. Offhausen        | Wichita,KS         | 30  | Helene L. Range         | Wichita,KS       | 19  | 4 Aug  | 7 Aug 1888*  |
| D354 | James Davidson Jr.    | Goddard,KS         | 28  | Mary Hedgle (en)        | Goddard,KS       | 19  | 4 Aug  | 5 Aug 1888*  |
| D355 | Samuel D. Klingman    | Oatville,KS        | 50  | Lucinda C. Stone        | Oatville,KS      | 35  | 8 Aug  | 8 Aug 1888*  |
| D355 | E.J. Thomas           | Colwich,KS         | 27  | Eva Mikles              | Colwich,KS       | 18  | 7 Aug  | 11 Aug 1888* |
| D356 | A.W. Prosser          | Hanover(Andover)KS | 45  | Emma Manley             | Wichita,KS       | 43  | 9 Aug  | 9 Aug 1888*  |
| D356 | William Curd          | Wichita,KS         | 21  | Icie Smith              | Wichita,KS       | 18  | 11 Aug | 11 Aug 1888* |
| D357 | John S. Wilkins       | Wichita,KS         | 22  | Carrie Wetmore          | Wichita,KS       | 19  | 13 Aug | 13 Aug 1888* |
| D357 | Ferdinand Schmitt     | Wichita,KS         | 28  | Bertha(erta) Rinke(kle) | St. Louis,MO     | 32  | 13 Aug | 13 Aug 1888* |
| D358 | H.S. Matteson         | Ft. Reno,IT        | 23  | Bertha Green            | Wichita,KS       | 20  | 13 Aug | 13 Aug 1888* |
| D358 | W.B. Quinland         | Wichita,KS         | 30  | A.D.G. Beard            | Wichita,KS       | 30  | 13 Aug | 13 Aug 1888* |
| D359 | Melvin(ville)E. Bay   | Wichita,KS         | 29  | Minnie Hon              | Wichita,KS       | 22  | 14 Aug | 26 Aug 1888* |
| D359 | O.H. Cully            | Wichita,KS         | 30  | Jennie B. Eaton         | Wichita,KS       | 24  | 15 Aug | 15 Aug 1888* |
| D360 | E.E. Hite             | Wichita,KS         | 22  | Anna Wahle              | Wichita,KS       | 24  | 16 Aug | 16 Aug 1888* |
| D360 | G.G. Wood             | Wichita,KS         | 21  | R.A. West               | Wichita,KS       | 23  | 17 Aug | 7 Sep 1888*  |
| D361 | La Roy M. Penwell     | Topeka,KS          | 25  | Mary H.E. Maston        | Mt. Hope,KS      | 25  | 17 Aug | 18 Aug 1888* |
| D361 | Thomas H. Downs       | Denver,CO          | 32  | Emma Jane Jones         | Denver,CO        | 43  | 17 Aug | 17 Aug 1888* |
| D362 | Oscar Plymath         | Wichita,KS         | 32  | Lovonia(vinia) Glass    | Wichita,KS       | 36  | 20 Aug | 20 Aug 1888* |
| D362 | Edward H. Ellis       | Wichita,KS         | 23  | Nellie Goodin(dwin)     | Wichita,KS       | 18  | 18 Aug | 18 Aug 1888* |
| D363 | W.G. Keeran           | Caldwell,KS        | 22  | Laura J. Simmons        | Valley Center,KS | 21  | 18 Aug | 19 Aug 1888* |
| D363 | James E. Nessly(ley)  | Wichita,KS         | 23  | Blanche Hamilton        | Wichita,KS       | 21  | 18 Aug | 18 Aug 1888* |
| D364 | George N. Clark       | Newton,KS          | 25  | Rosa (Louise) J. Harvey | Mulvane,KS       | 21  | 18 Aug | 19 Aug 1888* |

## MARRIAGES IN SEDGWICK COUNTY KANSAS

MHOS REGISTER

34

VOL. XX #1

| PAGE | GROOM                  | RESIDENCE      | AGE | BRIDE                 | RESIDENCE         | AGE | APPLI. | MARRIAGE     |
|------|------------------------|----------------|-----|-----------------------|-------------------|-----|--------|--------------|
| D364 | Lyman B. Flint         | Waverly, KS    | 71  | Martha M. Williams    | Wichita, KS       | 65  | 20 Aug | 20 Aug 1888* |
| D365 | George Q. McGown       | Wellington, KS | 27  | Dora Pierce           | Wichita, KS       | 18  | 20 Aug | 20 Aug 1888* |
| D365 | Charles DeMarais       | Wichita, KS    | 24  | M.L. Story            | Wichita, KS       | 21  | 21 Aug | 21 Aug 1888* |
| D366 | F.G. Brown             | Goddard, KS    | 24  | Emma E. Rosendale     | Goddard, KS       | 23  | 22 Aug | 23 Aug 1888* |
| D366 | O.W. Yard              | Bentley, KS    | 26  | Idella B. Carroll     | Oatville, KS      | 22  | 22 Aug | 23 Aug 1888* |
| D367 | Wm. H. Maxson          | Wichita, KS    | 35  | Mattie Lloyd          | Wichita, KS       | 20  | 23 Aug | 23 Aug 1888* |
| D367 | Ralph R. Reeves        | Wichita, KS    | 22  | Mary Williams         | Wichita, KS       | 21  | 27 Aug | 27 Aug 1888* |
| D368 | F.A. Dixon             | Wichita, KS    | 29  | Mary Leard            | Haven, KS         | 21  | 27 Aug | 27 Aug 1888* |
| D368 | Clarence O'Mahoney     | Peck, KS       | 35  | Agnes Unangst         | Peck, KS          | 24  | 29 Aug | 29 Aug 1888* |
| D369 | O.F. Olmstead          | Marion, KS     | 34  | N.C. Eilenberger      | Marion, KS        | 33  | 27 Aug | 27 Aug 1888* |
| D369 | J.W. Main              | Goddard, KS    | 36  | Mary Lumbert          | Goddard, KS       | 31  | 27 Aug | 28 Aug 1888* |
| D370 | A.V. Bennett           | Wichita, KS    | 21  | Grace Blizzard        | Wichita, KS       | 17  | 29 Aug | 29 Aug 1888* |
| D370 | Caldwell V. Todd       | Wichita, KS    | 34  | Mattie A. Mansfield   | Wichita, KS       | 18  | 29 Aug | 29 Aug 1888* |
| D371 | J.A. Williams          | Wichita, KS    | 29  | Mary C. Sherman       | Wichita, KS       | 21  | 29 Aug | 29 Aug 1888* |
| D371 | Abner St. Clair Bovard | Wichita, KS    | 32  | Ora E. Whiteman       | Newton, KS        | 18  | 29 Aug | 29 Aug 1888* |
| D372 | Edward L. Sites        | Wichita, KS    | 19  | Edith Whiteside       | Wichita, KS       | 19  | 30 Aug | 30 Aug 1888* |
| D372 | D.E. Hartman           | Mt. Hope, KS   | 23  | Eliza J. Green        | Mt. Hope, KS      | 18  | 30 Aug | 30 Aug 1888* |
| D373 | G.L. Chamberlin        | Wichita, KS    | 25  | Flora Henkle          | Bucklin, KS       | 26  | 30 Aug | 30 Aug 1888* |
| D373 | Goswin Wolff           | Wichita, KS    | 25  | Fannie Beck           | Wichita, KS       | 19  | 31 Aug | 31 Aug 1888* |
| D374 | P. Friis               | Wichita, KS    | 25  | Amelia Radke          | Wichita, KS       | 25  | 1 Sep  | 1 Sep 1888*  |
| D374 | Herman A. Hill         | Wichita, KS    | 21  | Ida Wilson            | Maize, KS         | 21  | 1 Sep  | 2 Sep 1888*  |
| D375 | P.O. Smith             | Wichita, KS    | 28  | Lillie B. Carter      | Winfield, KS      | 25  | 1 Sep  | 1 Sep 1888*  |
| D375 | F.S. Braddy            | Derby, KS      | 26  | Maggie M. Downey      | Sedowa, KS        | 19  | 3 Sep  | 3 Sep 1888*  |
| D376 | H.S. Clark             | Wichita, KS    | 45  | M.E. Dunn             | Wichita, KS       | 32  | 2 Sep  | 3 Sep 1888*  |
| D376 | George Bailey          | Ft. Scott, KS  | 21  | Daisy Boatwright      | Ft. Scott, KS     | 18  | 3 Sep  | 3 Sep 1888*  |
| D377 | F.S. Braddy            | Derby, KS      |     | (Page 375)            | Sedowa, KS        |     | 3 Sep  | ---          |
| D377 | Phillip Schneider      | Greenwich, KS  | 23  | Flora Chase           | Greenwich, KS     | 18  | 3 Sep  | 5 Sep 1888*  |
| D378 | William Henry Snyder   | Wichita, KS    | 22  | Rachel Grace Thompson | Valley Center, KS | 18  | 4 Sep  | 5 Sep 1888*  |
| D378 | Amos M. Kent           | Pleasanton, KS | 29  | Lou C. Porter         | Valley Center, KS | 19  | 4 Sep  | 5 Sep 1888*  |
| D379 | Charles T. Farmer      | Wichita, KS    | 23  | Retta Brooks          | Wichita, KS       | 19  | 4 Sep  | 6 Sep 1888*  |
| D379 | Joseph A. Yungmeyer    | Wichita, KS    | 26  | Nellie S. Blakely     | Wichita, KS       | 20  | 4 Sep  | 4 Sep 1888*  |
| D380 | Fred W. Kruegal        | Wichita, KS    | 21  | Lizzie S. Proud       | Wichita, KS       | 18  | 5 Sep  | 5 Sep 1888*  |
| D380 | J.J. Vance             | Wymore, NE     | 31  | Harrie C. Light       | Wichita, KS       | 22  | 5 Sep  | 6 Sep 1888*  |
| D381 | T.J. Whiteker          | Wichita, KS    | 24  | E.A. Campbell         | Wichita, KS       | 22  | 6 Sep  | 6 Sep 1888*  |
| D381 | J. Vance               | Wichita, KS    | 33  | Maud Porter           | Wichita, KS       | 20  | 6 Sep  | 6 Sep 1888*  |
| D382 | Christian Simonsen     | Derby, KS      | 19  | Johanna Kristernsen   | Derby, KS         | 18  | 6 Sep  | 8 Sep 1888*  |
| D382 | Jno. Murphey           | Wichita, KS    | 52  | Maggie McCaffrey      | Wichita, KS       | 35  | 7 Sep  | ---          |
| D383 | John D. Killion        | Wichita, KS    | 21  | Kate Huffman          | Wichita, KS       | 21  | 8 Sep  | 9 Sep 1888*  |
| D383 | Wilbert E. McDona ld   | El Dorado, KS  | 22  | Mattie E. Thorpe      | El Dorado, KS     | 19  | 9 Sep  | 9 Sep 1888*  |

# MARRIAGES IN SEDGWICK COUNTY KANSAS

| MHCS REGISTER | PAGE | GROOM                                    | RESIDENCE         | AGE | BRIDE                         | RESIDENCE     | AGE | APPLI. | MARRIAGE |       |
|---------------|------|--|-------------------|-----|-------------------------------|---------------|-----|--------|----------|-------|
|               |      |  |                   |     |                               |               |     |        |          |       |
|               | D384 | Wm. F. Docherty                          | Hutchinson,KS     | 27  | Josephine B. Dunne            | Chicago,IL    | 19  | 10 Sep | 10 Sep   | 1888* |
|               | D384 | W.O. McFarland                           | Wichita,KS        | 28  | Dollie F. Hays                | Wichita,KS    | 26  | 10 Sep | -- Sep   | 1888* |
|               | D385 | Solon Curtice                            | Louisville,KY     | 25  | Eva M. Cole                   | Mulvane,KS    | 19  | 11 Sep | 12 Sep   | 1888* |
|               | D385 | Solon Curtice                            | (Not issued Here) |     |                               |               |     | 11 Sep |          |       |
|               | D386 | David Boyle                              | Wichita,KS        | 64  | Mary Jane Marsh               | Wichita,KS    | 55  | 12 Sep | 13 Sep   | 1888* |
|               | D386 | James D. Tobin                           | Wichita,KS        | 28  | Iona Buck                     | Wichita,KS    | 15  | 13 Sep | 15 Sep   | 1888* |
|               | D387 | Samuel M. Robbins                        | Wichita,KS        | 25  | Barbara A. Correll            | Wichita,KS    | 24  | 13 Sep | 13 Sep   | 1888* |
|               | D387 | Fred Buckley                             | Wichita,KS        | 27  | Mary Travis                   | Wichita,KS    | 25  | 13 Sep | 13 Sep   | 1888* |
|               | D388 | Walter Ellis                             | Wichita PO,KS     | 29  | Eva Eldridge                  | Wichita PO,KS | 17  | 14 Sep | 14 Sep   | 1888* |
|               | D388 | Henry A. Johnson                         | Wichita,KS        | 21  | Laura Valentine               | Wichita,KS    | 21  | 15 Sep | 15 Sep   | 1888* |
|               | D389 | Edward(Edgar) M. Moss                    | Freeport,KS       | 36  | Anna M. Johnson               | Freeport,KS   | 32  | 17 Sep | 17 Sep   | 1888* |
|               | D389 | Ferdinand<br>Keuchenmeister<br>(mirster) | Wichita,KS        | 31  | Bertha Uhl                    | Wichita,KS    | 22  | 17 Sep | 18 Sep   | 1888* |
|               | D390 | George H. Hadley                         | Furley,KS         | 24  | Sarah F. Davis                | Lorena,KS     | 20  | 18 Sep | 18 Sep   | 1888* |
|               | D390 | P.H. Spears                              | Wichita,KS        | 23  | Belle McDonald                | Wichita,KS    | 19  | 18 Sep | 19 Sep   | 1888* |
| 35            | D391 | Harvey Zinn                              | Andale,KS         | 21  | Armintha Packer               | Andale,KS     | 17  | 19 Sep | 23 Sep   | 1888* |
|               | D391 | Ben Billings                             | Wichita,KS        | 27  | Mary Seaver                   | Wichita,KS    | 19  | 19 Sep | 19 Sep   | 1888* |
|               | D392 | Oliver Arbogast                          | Wichita,KS        | 30  | Nellie N. Cooper              | Wichita,KS    | 30  | 20 Sep | 20 Sep   | 1888* |
|               | D392 | E.J. Burnett                             | Wichita,KS        | 26  | Ollie Nixon                   | Wichita,KS    | 19  | 22 Sep | 23 Sep   | 1888* |
|               | D393 | Alic Rusk                                | Wichita,KS        | 26  | Lollie Bell                   | Wichita,KS    | 18  | 22 Sep | 23 Sep   | 1888* |
|               | D393 | Math Orth                                | Wichita,KS        | 27  | Katie Martin                  | Wichita,KS    | 21  | 22 Sep | 24 Sep   | 1888* |
|               | D394 | Caleb N. Jones                           | Wichita,KS        | 50  | Anna O. Lake(Clark)           | Wichita,KS    | 43  | 22 Sep | 23 Sep   | 1888* |
|               | D394 | Sidney C. Davis                          | Peotone,KS        | 21  | Rachel Light                  | Clearwater,KS | 20  | 24 Sep | 24 Sep   | 1888* |
|               | D395 | William Harkreader                       | Wichita,KS        | 28  | Elnora Huls                   | Wichita,KS    | 28  | 26 Sep | 26 Sep   | 1888* |
|               | D395 | Dr. C.C. Engleman                        | Cheney,KS         | 36  | Nannie Jones                  | Cheney,KS     | 21  | 25 Sep | 26 Sep   | 1888* |
|               | D396 | Terry Marlin                             | Sunnydale,KS      | 24  | Maggie Mackey                 | Sunnydale,KS  | 22  | 26 Sep | 26 Sep   | 1888* |
|               | D396 | R.B. Boaz                                | Wichita,KS        | 29  | Alice Fitzgearald<br>(gerald) | Wichita,KS    | 19  | 27 Sep | 27 Sep   | 1888* |
|               | D397 | A.A. Sebring                             | Wichita,KS        | 27  | Bertha Thacher                | Wichita,KS    | 19  | 27 Sep | 27 Sep   | 1888* |
|               | D397 | Oscar Schunke                            | Wichita,KS        | 26  | Mary Stein                    | Wichita,KS    | 24  | 29 Sep | 29 Sep   | 1888* |
|               | D398 | James Monroe                             | Wichita,KS        | 38  | Hattie Cannedy                | Wichita,KS    | 35  | 29 Sep | 29 Sep   | 1888* |
|               | D398 | S.C. Curts                               | Wichita,KS        | 22  | A.D. Davy                     | Wichita,KS    | 17  | 29 Sep | 30 Oct   | 1888* |
|               | D399 | C.F. Childs                              | Dodge City,KS     | 26  | Ollie Noret                   | Dodge City,KS | 22  | 1 Oct  | 1 Oct    | 1888* |
|               | D399 | W.H. Reed                                | Waseca,MN         | 26  | Ella M. Bryan                 | Wichita,KS    | 22  | 2 Oct  | 2 Oct    | 1888* |
|               | D400 | James Johnson                            | Wichita,KS        | 28  | T.F. Kennedy                  | Wichita,KS    | 18  | 2 Oct  | 2 Oct    | 1888* |
|               | D400 | Louis Clark                              | Wichita,KS        | 27  | M.J. Allen                    | Wichita,KS    | 32  | 2 Oct  | 3 Oct    | 1888* |
|               | D401 | Walter F. Chapman                        | Wichita,KS        | 21  | Jane Ott Mead<br>McDaniel     | Wichita,KS    | 20  | 2 Oct  | 2 Oct    | 1888* |

## MARRIAGES IN SEDGWICK COUNTY KANSAS

| PAGE | GROOM               | RESIDENCE    | AGE | BRIDE               | RESIDENCE        | AGE | APPLI. | MARRIAGE     |
|------|---------------------|--------------|-----|---------------------|------------------|-----|--------|--------------|
| D401 | Cephas Rochie       | Wichita,KS   | 40  | Amanda Brown        | Wichita,KS       | 34  | 3 Oct  | 4 Oct 1888*  |
| D402 | Thomas Horton       | Wichita,KS   | 66  | Elmina A. Abbott    | Wichita,KS       | 47  | 3 Oct  | 3 Oct 1888*  |
| D402 | Henry J. Kraus      | Cheney,KS    | 24  | Georgia McAllister  | Gull Lake,MI     | 23  | 4 Oct  | 10 Oct 1888* |
| D403 | William Gossett     | Wichita,KS   | 24  | Lizzie Fox          | Wichita,KS       | 19  | 6 Oct  | 14 Oct 1888* |
| D403 | Ed. C. Smith        | Wichita,KS   | 29  | Maggie J.M. Shaw    | Wichita,KS       | 23  | 8 Oct  | 10 Oct 1888* |
| D404 | D.E. Harper         | Mt. Hope,KS  | 26  | M.I. Little         | Mt. Hope,KS      | 22  | 8 Oct  | 9 Oct 1888*  |
| D404 | S.D. Powell         | Wichita,KS   | 21  | Minnie L. Harbur    | Wichita,KS       | 21  | 9 Oct  | 10 Oct 1888* |
| D405 | Samuel Emmert       | Wichita,KS   | 28  | Susan Elliott       | Wichita,KS       | 28  | 11 Oct | 11 Oct 1888* |
| D405 | S.O. Logan          | Wichita,KS   | 25  | Louisa A. Raisler   | Wichita,KS       | 18  | 15 Oct | 15 Oct 1888* |
| D406 | Andrew Woods        | Wichita,KS   | 22  | Della Johnson       | Wichita,KS       | 21  | 15 Oct | 15 Oct 1888* |
| D406 | Frank S. Hotchkin   | Wichita,KS   | 35  | Nancy B. Walker     | Wichita,KS       | 24  | 15 Oct | 16 Oct 1888* |
| D407 | George H. Closson   | Cullison,KS  | 21  | Emma R. Russell     | Saratoga,KS      | 21  | 16 Oct | 16 Oct 1888* |
| D407 | Robert Kingham      | Wichita,KS   | 25  | Sadie Hannon        | Wichita,KS       | 26  | 16 Oct | 18 Oct 1888* |
| D408 | Charles S. Watson   | Andale,KS    | 25  | Mary H. Harrover    | Andale,KS        | 25  | 16 Oct | 18 Oct 1888* |
| D408 | George Bodley       | Andale,KS    | 59  | Malinda F. Harrover | Andale,KS        | 22  | 16 Oct | 18 Oct 1888* |
| D409 | H.B. Brokaw         | Wichita,KS   | 29  | Grace E. Bidwell    | Wichita,KS       | 25  | 17 Oct | 17 Oct 1888* |
| D409 | W.W. Toy            | Wichita,KS   | 28  | Nellie M. People    | Wichita,KS       | 22  | 17 Oct | ---          |
| D410 | H.C. Adamson        | Wichita,KS   | 27  | Myrtle L. Hardy     | Valley Center,KS | 24  | 17 Oct | 18 Oct 1888* |
| D410 | Thomas C. Cox       | Wichita,KS   | 30  | Della C. Spencer    | Harriaville,OH   | 18  | 17 Oct | ---          |
| D411 | W.L. Doyle          | Wichita,KS   | 50  | M.R. Doyle          | Wichita,KS       | 38  | 18 Oct | 18 Oct 1888* |
| D411 | (391)               |              |     |                     |                  |     | 19 Sep |              |
| D412 | Francis Marion Ward | Wichita,KS   | 31  | Bell Golladay       | Wichita,KS       | 27  | 20 Oct | 21 Oct 1888* |
| D412 | J.M. Fuller         | Wichita,KS   | 22  | A.A. Osborn         | Wichita,KS       | 20  | 20 Oct | 25 Oct 1888* |
| D413 | John Herndon        | Wichita,KS   | 18  | Annie Jones         | Wichita,KS       | 20  | 22 Oct | 23 Oct 1888* |
| D413 | Paul E. Jones       | Wichita,KS   | 26  | Grace M. Bear       | Wichita,KS       | 24  | 24 Oct | 25 Oct 1888* |
| D414 | Edward Clator       | Wichita,KS   | 29  | Agnes B. Buzzard    | Wichita,KS       | 19  | 24 Oct | 24 Oct 1888* |
| D414 | Henry F. Booker     | Greenwich,KS | 28  | Mary Cochran        | Greenwich,KS     | 18  | 25 Oct | 25 Oct 1888* |
| D415 | John F. Millhaupt   | Wichita,KS   | 25  | Mary Julien         | Wichita,KS       | 23  | 25 Oct | 25 Oct 1888* |
| D415 | Frank Groves        | Wichita,KS   | 32  | Mary Hannah         | Wichita,KS       | 29  | 25 Oct | 25 Oct 1888* |
| D416 | Blank               |              |     |                     |                  |     |        |              |
| D416 | Blank               |              |     |                     |                  |     |        |              |
| D417 | Blank               |              |     |                     |                  |     |        |              |
| D417 | Blank               |              |     |                     |                  |     |        |              |
| D418 | W.M. Hizer          | Wichita,KS   | 29  | Nannie Knight       | Wichita,KS       | 19  | 26 Oct | 26 Oct 1888* |
| D418 | John L. Harris      | Wichita,KS   | 26  | Lizzie Edwards      | Marion,IL        | 25  | 26 Oct | ---          |
| D419 | John L. Harris      | Wichita,KS   | 26  | Lizzie Edwards      | Marion,IL        | 25  | 26 Oct | 26 Oct 1888* |
| D419 | William Page        | Wichita,KS   | 31  | Lillie M. Cooley    | Wichita,KS       | 20  | 26 Oct | 26 Oct 1888* |
| D420 | W.W. Toy            | Wichita,KS   | 28  | Nellie M. Peoples   | Wichita,KS       | 22  | 27 Oct | 28 Oct 1888* |

## MARRIAGES IN SEDGWICK COUNTY KANSAS

| PAGE | GROOM               | RESIDENCE        | AGE | BRIDE                  | RESIDENCE        | AGE | APPLI. | MARRIAGE     |
|------|---------------------|------------------|-----|------------------------|------------------|-----|--------|--------------|
| D420 | Burt Smith          | Wichita,KS       | 26  | Ida M. Harson          | Wichita,KS       | 23  | 29 Oct | 29 Oct 1888* |
| D421 | G.W. Peters         | Wichita,KS       | 35  | Mary Shultz            | Wichita,KS       | 24  | 30 Oct | 30 Oct 1888* |
| D421 | Louis M. Rowland    | Wichita,KS       | 24  | Ella Kendall           | Wichita,KS       | 17  | 30 Oct | 31 Oct 1888* |
| D422 | H.A. Knowles        | Wichita,KS       | 33  | Sarah F. Gager         | Wichita,KS       | 31  | 31 Oct | 31 Oct 1888* |
| D422 | Henry Patrum        | Wichita,KS       | 26  | Jennie Jeter           | Wichita,KS       | 17  | 1 Nov  | 1 Nov 1888*  |
| D423 | A.A. Miller         | Wichita,KS       | 25  | Lela O. Neff           | Wichita,KS       | 19  | 1 Nov  | 1 Nov 1888*  |
| D423 | Thos. Wesley Minnis | Wichita,KS       | 31  | Rosalie Coffey         | Cheney,KS        | 19  | 1 Nov  | 5 Nov 1888*  |
| D424 | D.W. Welsh          | Wichita,KS       | 28  | Emma Stahl             | Wichita,KS       | 19  | 1 Nov  | 1 Nov 1888*  |
| D424 | George R. Manning   | Colwich, KS      | 24  | Alice M. Covault       | Colwich,KS       | 27  | 3 Nov  | 3 Nov 1888*  |
| D425 | T.D. Coday          | Wichita,KS       | 26  | M.A. Dudley            | Wichita,KS       | 20  | 3 Nov  | 4 Nov 1888*  |
| D425 | J.A. Calville       | Lincoln TWP,KS   | 33  | Hattie E. Main         | Lincoln TWP,KS   | 21  | 3 Nov  | 11 Nov 1888* |
| D426 | J.B. Howard         | Wichita,KS       | 32  | Alice A. Patterson     | Wichita,KS       | 29  | 3 Nov  | 3 Nov 1888*  |
| D426 | William H. Gaunt    | North Wichita,KS | 26  | Ollie J. Gilchrist     | Valley Center,KS | 17  | 3 Nov  | 4 Nov 1888*  |
| D427 | Edward Morris       | Goddard,KS       | 27  | Francis E. Anderson    | Goddard,KS       | 18  | 5 Nov  | 6 Nov 1888*  |
| D427 | Hiram Shively       | Wichita,KS       | 43  | Carrie Greenway        | Wichita,KS       | 39  | 6 Nov  | ---          |
| D428 | Henry Duck          | Wichita,KS       | 52  | Anna Smith             | Wichita,KS       | 39  | 7 Nov  | 7 Nov 1888*  |
| D428 | E.B. Lanning        | Wichita,KS       | 25  | Sadie Dyer             | Valley Center,KS | 20  | 7 Nov  | 7 Nov 1888*  |
| D429 | W.N. Hall           | Rose Hill,KS     | 20  | Jennie McKnight        | Rose Hill,KS     | 18  | 10 Nov | 18 Nov 1888* |
| D429 | E.W. Smythe         | Wichita,KS       | 24  | Tillie Stuvén          | Wichita,KS       | 20  | 13 Nov | 13 Nov 1888* |
| D430 | B.F. Whitmore       | Valley Center,KS | 21  | Lizzie Wolf            | Valley Center,KS | 17  | 13 Nov | 13 Nov 1888* |
| D430 | Turner McIntire     | Halstead,KS      | 26  | Rosetta E. Mounts      | Wichita,KS       | 18  | 14 Nov | 14 Nov 1888* |
| D431 | Samuel Green        | Wichita,KS       | 35  | Mary A. Parker         | Wichita,KS       | 37  | 14 Nov | 14 Nov 1888* |
| D431 | John Harkey         | Wichita,KS       | 16  | Catharine D. Vulgamore | Wichita,KS       | 16  | 14 Nov | 15 Nov 1888* |
| D432 | B.F. Fulton         | Wichita,KS       | 30  | Lillian M. Williams    | Wichita,KS       | 18  | 15 Nov | 15 Nov 1888* |
| D432 | E.D. Earhart        | Wichita,KS       | 23  | Alice M. Drake         | Wichita,KS       | 18  | 17 Nov | 18 Nov 1888* |
| D433 | John Walker         | Wichita,KS       | 22  | Mollie Bohr            | Wichita,KS       | 16  | 19 Nov | 20 Nov 1888* |
| D433 | John Walker         | Wichita,KS       | --  | (None Issued Here)     | Wichita,KS       | --  | 19 Nov | ---          |
| D434 | George T. McPherson | Valley Center PO | 25  | Lillie M. Marglin      | Valley Center PO | 15  | 20 Nov | 20 Nov 1888* |
| D434 | Fred Fries(ss)      | St. Marks,KS     | 25  | Anna Neiser(sser)      | St. Marks,KS     | 20  | 21 Nov | 27 Nov 1888* |
| D435 | William A.J. Rush   | El Dorado,KS     | 36  | Levina E. James        | El Dorado,KS     | 21  | 20 Nov | 20 Nov 1888* |
| D435 | W.H. Jezard         | Wichita,KS       | 28  | Kate L. Hovis          | Wichita,KS       | 23  | 20 Nov | 20 Nov 1888* |
| D436 | George R. Parham    | Wichita,KS       | 24  | Carrie H. Blood        | Wichita,KS       | 18  | 20 Nov | 20 Nov 1888* |
| D436 | Henry E. Hays       | Wichita,KS       | 25  | Hattie Stout           | Wichita,KS       | 18  | 22 Nov | 22 Nov 1888* |
| D437 | Fred McAllister     | Spivey,KS        | 23  | Viola Clifton          | Germania,KS      | 24  | 22 Nov | 24 Nov 1888* |
| D437 | Mitchell Acuff      | Wichita,KS       | 30  | Dora Williams          | Wichita,KS       | 20  | 24 Nov | 25 Nov 1888* |
| D438 | J. Heckathorn       | Peotone,KS       | 24  | Nannie Flinn           | Peotone,KS       | 18  | 24 Nov | 24 Nov 1888* |
| D438 | George A. Maxwell   | Mt. Hope,KS      | 26  | Effa Dean              | Mt. Hope,KS      | 20  | 26 Nov | 26 Nov 1888* |
| D439 | Robert Murphy       | Hukle,KS         | 21  | Maud H. Sadler         | Hukle,KS         | 19  | 26 Nov | 29 Nov 1888* |
| D439 | Charles Ralph       | Valley Center,KS | 29  | Dora Nelson            | Valley Center,KS | 26  | 27 Nov | 28 Nov 1888* |

- Pomeroy, A. L., music dealer, fr. Cannonsville, N. Y., r. Main, bet. 1st and 2d.
- Pope, J. L., capitalist, fr. Kane, Ill. r. Emporia, bet. Central and 3d.
- POST OFFICE, M. M. Murdock, P. M., Main, bet. Douglas and 1st, ex.
- POST OFFICE BOOK STORE AND NEWS DEPOT, G. H. Her-  
rington, propr., Postoffice Building.
- Pratt, G. L. (Williamson & Pratt), fr. Mineral Point, Wis., r. Law-  
rence av. bet. Douglas and Williams.
- Preston, Frank, lab., fr. Cooper co., Mo., r. Main, bet. 2d and 3d.
- PRESBYTERIAN CHURCH, Rev. J. P. Harson, pastor, sw. cor.  
1st and Lawrence av.
- Priest, Jas., far., fr. Kane co., Ill., r. Emporia, n. end.
- Priest, Simeon, poultry dealer, fr. Ohio, r. Emporia, bet. Central  
and Elm.
- PROTESTANT EPISCOPAL CHURCH, Rev. Mr. Colton, Rector,  
services in Occidental blk.
- Pug, L. W., artist, cor. Emporia and Douglas, bds. Richey h.

## R

- Radabaugh, Daniel, carpenter, fr. Ohio, r. 4th, bet. English and  
Water.
- Railroad Stables, (J. H. Hilliard, propr.), cor. Douglas and 4th.
- Ramsey, M. R., carpenter, fr. Hillsborough, Pa., r. cor. Emporia  
and English.
- Randall, John A., carriage mkr., r. Main, bet. 1st and 2d.
- Rathbun, Eliza, seamstress, fr. Bureau co., Ill., r. s. Water.
- Rathbun, Mrs. Josephine, seamstress, fr. Bureau co., Ill., r. s.  
Water.
- Rathburn, Miss Josephene, drw., (Occidental h.), fr. Ind.
- Rathburn, Miss Lydia, drw., (Occidental h.), fr. Ind.
- Ratliff, John, clerk, (John A. Wallace), fr. Newmansville, Ill., r.  
Lawrence, bet. 2d and 3d.
- Ratzell, Alfred, plasterer, fr. Philadelphia, Pa., r. 4th, bet. Wil-  
liams and English.
- Receiver's Office First National Bank, (W. C. Little, receiver).  
cor. Main and 1st, up stairs.
- Redfield, J. C., bus. manager, (G. Y. Smith & Co.), fr. Twinsburg,  
Ohio, r. cor. Emporia and 3d.
- Red Front Feed and Sale Stable, (Geo. Chadwick, propr.), Doug-  
las av., w. end.
- Reed, J. B., plasterer, fr. Bedford, Pa., bds. Douglas av.
- Reed, Mrs. Maggie, cigar dealer, fr. Cincinnati, O., r. Douglas  
av., bet. Topeka and Emporia.

---

## J. GEORGE RODE, Manufacturer of Boots and Shoes

Manufactory first door east of Eagle Block.

DOUGLAS AVENUE,      Wichita, Kansas.

A full stock of our manufacture on hand. Repairing done on short notice. Prompt attention paid to filling and satisfying all orders.

---

## A. TIGNIERE.

## Maker and Dealer in Guns

DOUGLAS AVENUE, WICHITA, KANSAS.

Guns, Pistols, Cartridges, Etc., always on hand. Repairs done in the best and most substantial manner.

---

## The Wichita Herald.

ROBBINS & NIXON, Publishers.

PUBLISHED AT WICHITA, SEDGWICK CO., KANS.,

EVERY SATURDAY MORNING.

---

**THOROUGHLY REPUBLICAN.**

---

## HAYS & BRO.,

DEALERS IN

## LEATHER FINDINGS

Hides, Furs, Buffalo Robes and Wool.

WICHITA,      -      KANSAS.

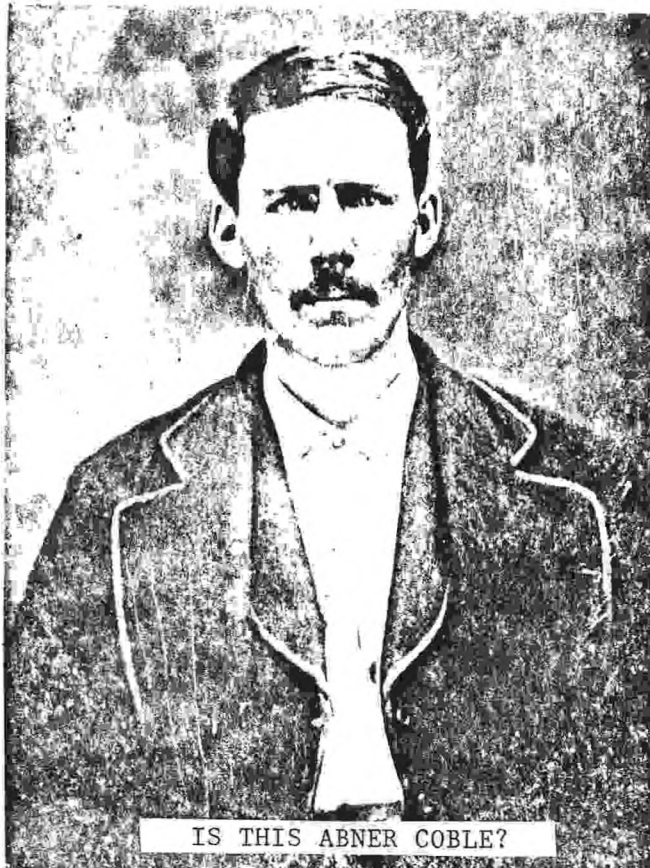


- Reed, Oscar, miller, fr. W. Va., bds. Richey h.  
 Reed, Theodore, lab., fr. Independence, Mo., r. cor. Water and 3d.  
 Reed, W. H., blacksmith, Douglas av., w. end, fr. Flat Rock, Ky., r. Douglas av., w. e.  
 REESE, J. F. (Oriental stables), fr. Burnt Cabins, Pa., r. Lawrence, bet. 1st and 2d.  
 Reese & Sawyer, carpenters and contractors, shop, Market, nr. Douglas.  
 Reese, W. A. (Reese & Sawyer), fr. Pa., r. cor. Emporia av. and 2d.  
 Reeves, Geo. W., police judge, fr. Georgetown, O., bds. Douglas av. h.  
 Reid, John T., far., fr. Boyd Station, Md., bds. with John T. Ridge.  
 Reilly, G. W. (Murphy & Reilly), fr. Galena, Ill., r. Lawrence av., s. end.  
 Reimers, H. J., books, and stationery, Centennial blk., fr. Tipton, Mo., bds. Douglas av.  
 Reitz, Frederick, tinner (Houk Bros.), fr. Dakota City, Neb., r. Market, s. end.  
 Rentz, E. B., physician, office over Block's store, fr. Muncy, Pa., r. Market, bet. 2d and 3d.  
 Rettenmayer, Frederick, tinner, (Bissantz & Butler), fr. Fairburg, Ill., bds. Snitzler res.  
 Reynolds, S. H., (propr. Globe h.), fr. Janesville, Wis., r. same.  
 Rhodes, Henry A., bk., (Dittman), fr. Rockford, Ill., bds. with Loke.  
 Rice, D. F., carpenter, fr. Centerville, Iowa, r. 1st, s. end.  
 Richards, Benj. F., tinner, (Houck Bros.), fr. Decatur, Ill., bds. Tremont h.  
 Richards, H. H., (Richards & Rodgers), fr. Elmira, N. Y., r. Lawrence, bet. 2d and 3d.  
 Richards & Rodgers, grocers, New York block, Douglas av.  
 Richardson, Milford, far., fr. Canaan, Me., r. Central av., w. end.  
 Richey, —, plasterer, fr. Springfield, Mo., r. Main, bet. 1st and 2d.  
 RICHEY HOUSE, (Richey Bros., proprs.), Douglas, bet. 4th and 5th, na.  
 Richey, J. C., (Richey h.), fr. Kittanney, Pa.  
 Richey, J. E., painter, fr. Kittanney, Pa., bds. Richey h.  
 Richey, S. E., far., fr. Kittanney, Pa., bds. Richey h.  
 Richey, W. A. (Richey House), fr. Kittanney, Pa.  
 Richter, E. F. (Star Saloon), fr. Chicago, Ill., r. Main st., s. end.  
 Ricketts, Joseph, saddler, fr. Decatur, Ill., r. Main, s. end.  
 Ridge, J. E., carpenter, fr. Chicago, Ill., r. Lawrence, bet. Douglas and 1st.  
 Ridgeway, L. C., feed stable, cor. Douglas and Lawrence, fr. Ash Flat, Ark., r. Market, s. end.

- Riggins, Perry, stone mason, fr. Logan co., Ill., bds. with D. R. Hovey.  
 Biggs, D. C., laundry, fr. Monmouth, Ill., r. Water, bet. 2d and 3d.  
 Rinkley, Wm. bk. (Clipper Saloon), bds. with Emil Werner.  
 Ripley, Leland, herder, f. Fort Ann, N. Y., r. Main, s. end.  
 Ritchey, John, carpenter, 76 Douglas av., fr. Schuyler co. Ill., bds. Richey h.  
 Ritchie, Jos., far., fr. Maconsville, Mo., bds. with A. D. G. Palmer.  
 Ritter, Jacob (City Hall saloon), fr. Kansas City, Mo., r. Lawrence av., bet. 1st and 2d.  
 Rivers, T., stone mnfr., fr. Wisconsin, r. Main, s. end.  
 Roberson, Joshua, teamster, fr. Lexington, Mo., r. cor. Waco and Pine.  
 Robbins, Miss Bettie, laundress (Occidental h.), fr. Missouri.  
 Robbins, J. W., editor (Herald office), fr. Greenville, Miss., bds. Occidental h.  
 Roberts, J. B., mcht., fr. Bloomington, Ill., r. Lawrence, bet. Central and 3d.  
 Robertson, Chas. C., plasterer and brick mason, fr. Owosso, Mich., r. 4th, bet. 1st and 2d.  
 Robinson, Sarah, fr. Petersburg, Pa., r. 4th, s. end.  
 Rockwell, G. T., grain dealer, fr. Munsville, Ind., r. Water, s. end.  
 RODE, J. G., shoemaker, fr. Washington, Pa., r. Lawrence, bet. Douglas and 1st.  
 Rogers, Chas., drayman, fr. Wisconsin, r. Water, bet. 1st and 2d.  
 Rogers, O. (Richards & Rogers), fr. Painesville, O., r. Emporia, bet. 1st and 2d.  
 Rodgers, R. L. (J. H. Dagner & Co.), fr. Ill., r. Lawrence av., bet. Grand av. and 3d.  
 Roland, Valentine (Occidental Saloon), fr. France, r. Water, bet. 2d and 3d.  
 Rolles, John, lab., fr. Baltimore, Md., r. Wichita, bet. Central and Elm.  
 Romigh, Daniel, Wagon mkr. (A. J. Granger), fr. London, O., bds. with C. Arnold.  
 Root, S., expressman, fr. Hartford, Wis., r. Williams, bet. Main and Market.  
 Root, R. E., expressman, fr. Hartford, Wis., r. Market, bet. Williams and English.  
 Rose, Mrs. S., fr. Ogden, Iowa, r. Topeka n. end.  
 Rosen Bros., merchant tailors, Main, nr. Douglas av.  
 Rosen, Clay (Rosen Bros.), fr. Chicago, Ill., bds. with Dr. Doyle.  
 Rosen, G. (Rosen Bros.), fr. Chicago, Ill., bds. with Dr. Doyle.  
 Rosenberg, Israel, notion dealer, fr. Indianapolis, Ind., store and r. Douglas av., bet. 4th and 5th.  
 Roseberry, Geo. W., boots and shoes, opposite postoffice, fr. N. Y., bds. Occidental h.  
 Ross, David, (Geo. Innes & Co.), fr. Canada, bds. Occidental h.



IS THIS JANE (STOUGHTON) COBLE?



IS THIS ABNER COBLE?

Have you seen one of these photos before? If you have contact Eva Mae Hughes, 1641 S. Millwood, Wichita, KS 67213.

## QUERIES

QUERIES WILL BE USED AS SPACE PERMITS. Please limit your query to 50 words or less. Type or print, if possible. Capitalize all surnames but not given names. Give a date, location or event. Please read your query before mailing. If your query cannot be understood, it will not be published. Each member is allowed two queries per publication, non-members one query if space permits. Mail to Attention: Query Editor, MHGS, PO Box 1121, Wichita, KS 67201.

20185-1 OGLE/CARR: Seeking info on Levi OGLE & first wife, Emma CARR, Elk Co, KS. Emma and son Manley, age 3, were listed in 1880 census of Elk Co. with her father, Josiah CARR, a hotel keeper. Levi OGLE d 1940 in Caddo Co, OK, leaving his son Manley \$5 in his will.

AND

20185-2 OGLE/SAWYER: Seeking info on family of William Marion OGLE & wife Mary SAWYER of 1880 Elk Co, KS census. Daughters Nellie, b ca 1876 and Hester b ca 1879. One of the daughters married a Mr. Andrews and the other daughter married a Mr. Prutsman. Arbelle Ogles CASIDA, Rt. 2, Box 62, Cloverdale IN 46120.

20185-3 RICHARDSON/BOSTER: Need info on George Washington RICHARDSON b 20 March 1832, d 2 Jan 1916, m 8 April 1853 IL, to Harriet BOSTER (?), d 4 Nov 1862 Labette KS.

AND

20185-4 NEWTON/POATES(COATES): Samuel NEWTON, birthdate unknown, m 23 June 1824 Garrard Co, KY, d 17 Sept 1867, m Cittarian POATES or COATES, b 1803. Children: John H, William, James, David, Sarah. Seeking any info on either parent. Barbara L. NEWTON, 11517 Bellaire, Wichita KS 67207.

20185-5 DEARTH: Looking for info on Jacob C. DEARTH, b 1830 Monroe Co, OH, d 1909 OH, m Susan ?. He was the father of Peter Lloyd DEARTH, b 1855 Monroe Co, OH, d 1929 Wichita KS. What was Susan's maiden name? Dorothy DEARTH, 5048 N. Broadway, Wichita KS 67219.

20185-6 NEUFER/NEUFER: Seeking any info on any NEUFERS/NEUFERS living in Wichita area, especially Chess NEUFER and Sheridan NEUFER, who are listed in 1940's Wichita city directories. Doris HITCHCOCK, 1032 First St., Jackson MI 49203.

20185-7 BOYER: Need info on parents/brothers/sisters of William Henry BOYER, b 3 Oay 1851 in OH (Columbus?), moved to IL, then Harvey Co, KS, in 1879/80, d Dec 1928. Death certificate gives father's name as John BOYER b. PA, mother's name not given. Any help appreciated. Pam HORN, 1150 Prairie Park, Wichita KS 67218.

20185- 8 FREEMAN/LEE/COX: She was Elvia H. \_\_\_\_\_ FREEMAN, age 27, in the 1850 Benton CO, AR census. Joseph FREEMAN, age 31, died, and Elvia m. Mr. LEE, a school teacher. One of their children, Mahala, m. George H. COX. Son Joseph F. (Dink) COX m Perota BANKS 21 June 1892 at Elkhorn, Benton Co, AR. Mary BRUMFIELD, PO Box 28115, Dallas TX 75228.

20185-9 HOYT/TEED: Seeking any info on Benaiah Clement HOYT, b NH 1815, m Hannah TEED 1841. Living in Ozaukee Co, WI, in 1860 census. Known to be visiting in Salem IA in 1894 and thought to have died shortly thereafter--where? Will exchange info.

AND

20185-10 ALLOWAY/ABELL/EHRMAN: Need any info on families of Abijah and Malinda ALLOWAY, Daniel and Mary A. ABELL, Willis Benaiah and Ada Millicent EHRMAN--all lived in Jasper, Lucas or Hardin Co's, IA, in 1800's. Will share info that I have on above families; also on FRAUENBERGER and RUTTGEN lines, Labette Co, KS. Juanita ALLOWAY, 855 Greenway Court, Derby KS 67037.

20185-11 WELLS/BICKEDUAFF: Henry James WELLS b 17 Nov 1829 Philadelphia PA, m Cathline Jane BICKEDUAFF 1 April 1849 Jefferson Co, OH. Need parents, brothers, sisters, and ethnic background if possible. Married 2nd wife Rachel A. GATES or ESTEP 10 Feb 1869.

AND

20185-12 VANDAVEER/DENNISON: James L. DENNISON b 24 Feb 1850 in KY, m Sarah C. DENNISON 14 Dec 1872. Where? She is supposed to be Cherokee Indian princess; her parents were Jerry DENNISON and Darkis BAUFPNSON. Any info. Debbie HERRINGTON, 1123 N. Pershing, Wichita KS 67208.

## NEW AT THE KANSAS STATE HISTORICAL SOCIETY

Soon all M.H.G.S. special publications will be at the Kansas State Historical Society Research Center in Topeka. Through an exchange-purchase agreement the following materials will be placed in the Research Center:

Wichita Death Certificate Information From Certificates, City Directories and Cemeteries - 1887 to 1900.  
Mt. Hope Cemetery Tombstone Readings - Near Mt. Hope, Greeley Twp, Sedgwick County, Kansas.  
Miscellaneous Cemeteries - Afton, Eldridge, Old Fairview, Jamesburg, Kechi, Park, Herrington, Mulkey, Old Clonmel, Lutheran (White Cotton), Pleasant Ridge and Ruby Tombstone Readings, Vol. 1.  
Synopsis of Butler County, Kansas Wills, 1869-1901.  
Butler County, Kansas Marriages, 1861-1885.  
Harvey County, Kansas Marriages, 1872-1895.  
Index to Portrait & Biographical Album, Sedgwick County, Kansas, 1883.  
History of Grand River Township, Sedgwick County, Kansas, 1882, 1905 and 1984 Landowners Map.  
1875 Sedgwick County, Kansas Census with index.  
1870 Sedgwick County, Kansas Census with index.  
Edwards Historical Atlas of Sedgwick County, Kansas, 1882.

M.H.G.S. will be receiving a microfilm copy of The Biographical Record of Sedgwick County, Kansas 1901 through this agreement.

## INDEX

Alphabetized lists are not included in this index.

|           |       |            |          |            |    |           |       |
|-----------|-------|------------|----------|------------|----|-----------|-------|
| ABBOTT    | 36    | AULD       | 12       | BIGGS      | 11 | BOWMAN    | 14    |
| ABELL     | 44    | BAEHR      | 21       | BILLINGS   | 35 | BOYER     | 44    |
| ACREE     | 33    | BAILEY     | 34       | BIRDSALL   | 6  | BOYLE     | 35    |
| ACUFF     | 37    | BAKER      | 11       | BIXLER     | 15 | BRADDY    | 34    |
| ADAMS     | 2-14  | BANKS      | 44       | BLACK      | 6  | BRAND     | 24    |
| ADAMSON   | 36    | BANTA      | 6        | BLACKWOOD  | 18 | BRANTLEY  | 9     |
| AFTON     | 6     | BARNEY     | 14       | BLAKELY    | 34 | BREHM     | 3     |
| AKINS     | 18    | BARRETT15  |          | BLICK      | 22 | BREWER    | 21    |
| ALBERTY   | 18-20 | BARTLEY    | 10       | BLIZZARD   | 34 | BRINK     | 22    |
| ALEXANDER | 33    | BARTON     | 19       | BLOOD      | 37 | BRITAIN   | 10    |
| ALIA      | 25    | BAUFPN SON | 44       | BOANING    | 25 | BRITTON   | 13    |
| ALLAN     | 10    | BAXTER     | 10       | BOATWRIGHT | 34 | BROKAW    | 36    |
| ALLEN     | 12-35 | BAY        | 33       | BOAZ       | 35 | BROWN     | 13-15 |
| ALLOWAY   | 44    | BEAR       | 36       | BOCK       | 14 |           | 34-36 |
| AMOS      | 15    | BEARD      | 10-33    | BODLEY     | 36 | BROWNLEE  | 15    |
| ANDERECK  | 6     | BEARTH     | 8        | BOHR       | 37 | BRUCE     | 9-13  |
| ANDERSON  | 37    | BEDWELL    | 26       | BOLES      | 19 | BRUMFIELD | 44    |
| ANDREWS   | 33-43 | BELL       | 18-33-35 | BOLLIG     | 8  | BRYAN     | 35    |
| ARBOGAST  | 35    | BELT       | 8        | BOOKER     | 36 | BUCK      | 35    |
| ARBUCKLE  | 8     | BENNETT    | 34       | BOSIN      | 3  | BUCKLEY   | 35    |
| ARMSTRONG | 23    | BENTON     | 12       | BOSTER     | 44 | BULL      | 11    |
| ARP       | 12    | BICKEDUAFF | 44       | BOVARD     | 34 | BURNETT   | 35    |
| ASH       | 9     | BIDWELL    | 36       | BOWEN      | 8  | BURNS     | 10    |

|            |          |             |          |              |          |            |          |
|------------|----------|-------------|----------|--------------|----------|------------|----------|
| BUSCH      | 24       | DAVIS       | 33-35    | FOREMAN      | 19       | HART       | 20       |
| BUZZARD    | 36       | DAVY        | 35       | FOUTS        | 12       | HARTMAN    | 34       |
| CALVILLE   | 37       | DEAN        | 37       | FOX          | 8        | HARVEY     | 33       |
| CAMPBELL   | 9-11     | DEARTH      | 44       | FRAUENBERGER | 44       | HAYES      | 35-37    |
|            | 21-34    | DEFEMBACH   | 24       | FREEMAN      | 44       | HECKATHORN | 37       |
| CANNEDY    | 35       | DEMARAIS    | 34       | FRESSELL     | 24       | HEDGLE     | 33       |
| CANNON     | 18       | DENNIS      | 25       | FRICK        | 6        | HEIMERMAN  | 23       |
| CARNAHAN   | 11       | DENNISON    | 33-44    | FRIES        | 37       | HEINSOHM   | 6        |
| CAROTHERS  | 13       | DENSMORE    | 33       | FRIIS        | 34       | HELLAR     | 33       |
| CARPENTER  | 33       | DENTON      | 19       | FRONING      | 8        | HELM       | 33       |
| CARR       | 43       | DIETRICH    | 33       | FULLER       | 36       | HENDRIXSON | 8        |
| CARROLL    | 14-34    | DIXON       | 34       | FULTON       | 37       | HENKLE     | 34       |
| CARTER     | 34       | DOCHERTY    | 35       | FUQUA        | 21       | HENSLEY    | 15       |
| CASIDA     | 43       | DODGE       | 12-15    | FURLEY       | 21       | HERNDON    | 36       |
| CATCHER    | 18-19    | DOLAN       | 15       | GAGE         | 3        | HERRINGTON | 44       |
| CATES      | 19       | DORMER      | 14       | GAGER        | 37       | HIERMAN    | 33       |
| CHAMBERLIN | 34       | DOWNEY      | 34       | GAMBLE       | 19       | HIGLER     | 25       |
| CHANCE     | 20       | DOWNS       | 33       | GARCELON     | 25       | HILL       | 34       |
| CHAPMAN    | 15-35    | DOYAL       | 22       | GATES        | 44       | HITCHCOCK  | 44       |
| CHASE      | 34       | DOYLE       | 36       | GAUNT        | 37       | HITE       | 33       |
| CHILDS     | 35       | DRAKE       | 37       | GIBSON       | 15-19    | HIZER      | 36       |
| CHIVINGTON | 12       | DUAS        | 19       | GIFFORD      | 15       | HLADIK     | 8        |
| CLAIRMONT  | 33       | DUCK        | 37       | GILCHRIST    | 37       | HOKE       | 23       |
| CLARK      | 33-34-35 | DUDLEY      | 19       | GLASGOW      | 20       | HOLBROOK   | 9        |
| CLASEN     | 23       | DUFF        | 8        | GLASS        | 24-33    | HOLLAND    | 20       |
| CLATOR     | 36       | DUGGER      | 20       | GLENN        | 20       | HOLT       | 19       |
| CLIFTON    | 37       | DUNN        | 10-34    | GOLLADAY     | 36       | HON        | 33       |
| CLOSSON    | 36       | DUNNE       | 35       | GOODELL      | 10       | HORN       | 44       |
| CLOUD      | 8        | DWIGHT      | 23       | GOODIN       | 33       | HORSESKIN  | 18       |
| CLYNE      | 18       | DYER        | 37       | GOODRICH     | 11       | HORTON     | 36       |
| COBB       | 21       | EARHART     | 37       | GORDON       | 19       | HOSS       | 10       |
| COBLE      | 43       | EATON       | 33       | GOSSETT      | 36       | HOTCHKIN   | 36       |
| COCHRAN    | 36       | EDWARDS     | 15-36    | GRANTZ       | 8        | HOUSELY    | 18       |
| CODAY      | 37       | EHRMAN      | 44       | GREEN        | 18-20-33 | HOVIS      | 37       |
| COFFEY     | 37       | EICHHOLTS   | 13       |              | 34-37    | HOWARD     | 37       |
| COLDWELL   | 21       | EILENBERGER | 34       | GREENWAY     | 37       | HOWE       | 24       |
| COLE       | 35       | ELDRIDGE    | 35       | GRIGSBY      | 18       | HOWELL     | 22-23    |
| COLEMAN    | 12       | ELLIOTT     | 8-36     | GROFF        | 33       | HOYT       | 44       |
| COOK       | 13       | ELLIS       | 25-33-35 | GROVES       | 36       | HUCKABEE   | 8        |
| COOKE      | 10       | EMMERT      | 36       | GRUVER       | 8        | HUDSON     | 25       |
| COOLEY     | 36       | ENGLAND     | 20       | GUNELMAN     | 25       | HUFFMAN    | 34       |
| COOPER     | 35       | ENGLEMAN    | 35       | GUTHRIE      | 21       | HUGHES     | 43       |
| COPLIN     | 8        | ENOS        | 33       | HACKNEY      | 8        | HUGHS      | 12       |
| CORNTASSEL | 18       | ESTEP       | 44       | HADLEY       | 35       | HULS       | 35       |
| CORRELL    | 35       | EVENS       | 22       | HALL         | 37       | HUNTER     | 22       |
| COURTNEY   | 33       | FALKENSTEIN | 12       | HALSIG       | 25       | HUSTED     | 33       |
| COSTON     | 19       | FARMER      | 34       | HAMILTON     | 19-33    | HUTCHINSON | 10-21    |
| *CONNELEY  | 19       | FASSETT     | 10       | HAMMOND      | 13       | HYDE       | 10-21    |
| COVAULT    | 37       | FESDICK     | 9        | HANNAH       | 36       | IMBLER     | 23       |
| COX        | 36-44    | FIELDS      | 6        | HANNON       | 36       | INGARGIOLA | 8        |
| CRANE      | 14       | FINEOUT     | 3        | HARBUR       | 36       | IRWIN      | 11       |
| CRITTENDEN | 19       | FITZGEARALD | 35       | HARDY        | 36       | JACKSON    | 8-9      |
| CROCKER    | 25       | FITZGERALD  | 13       | HARKEY       | 37       | JAMES      | 6-7-37   |
| CROZIER    | 7        | FLETCHER    | 19       | HARKREADER   | 35       | JETER      | 37       |
| CULLY      | 33       | FLINN       | 34       | HARMON       | 9        | JEZZARD    | 37       |
| CURD       | 33       | FLINT       | 34       | HARPER       | 14-33-36 | JOHNSON    | 35-36    |
| CURTICE    | 35       | FLORY       | 3        | HARRIS       | 36       | JONES      | 33-35-36 |
| CURTS      | 35       | FOOTE       | 11       | HARRISON     | 8        | JORDAN     | 21       |
| DAVID      | 20       | FORBES      | 15       | HARROVER     | 36       | JULIEN     | 36       |
| DAVIDSON   | 10-33    | FORD        | 14       | HARSON       | 37       | KEERAN     | 33       |

|                |         |            |       |            |         |             |        |
|----------------|---------|------------|-------|------------|---------|-------------|--------|
| KEITH          | 12-26   | MAXEON     | 21    | NEWTON     | 8-44    | QUINLAND    | 33     |
| KELLOGG        | 25      | MAXSON     | 34    | NICHOLS    | 19      | RADKE       | 34     |
| KELLOUGH       | 6       | MAXWELL    | 37    | NIXON      | 35      | RAISLER     | 36     |
| KENDALL        | 37      | MCALLISTER | 24    | NOBLE      | 9       | RALPH       | 37     |
| KENNEDY        | 35      |            | 36-37 | NORET      | 35      | RANDOLPH    | 19     |
| KENT           | 34      | MCCAFFREY  | 34    | OGDEN      | 12      | RANGE       | 33     |
| KEUCHENMEISTER |         | MCCLELLAN  | 12    | OGLE       | 43      | RATSELL     | 12     |
|                | 35      | MCCONAHIE  | 12    | OFFHAUSEN  | 33      | RAYMOND     | 9-10   |
| KIERNAN        | 33      | MCCONNELL  | 23    | OLDFIELD   | 33      | REED        | 35     |
| KILLION        | 34      | MCCORMACK  | 12    | OLMSTEAD   | 34      | REEVES      | 6-8-34 |
| KIMMEL         | 2-3     | MCCRACKEN  | 9     | O'MAHONEY  | 34      | RHOADS      | 13     |
| KING           | 14-26   | MCDANIEL   | 35    | O'MEALLY   | 14      | RICHARDSON  | 44     |
| KINGHAM        | 36      | MCDONALD   | 33    | OMMER      | 33      | RIDDLE      | 13     |
| KINKEAD        | 13      |            | 34-35 | OSBORN     | 36      | RIDER       | 18     |
| KIRKPATRICK    | 12      | McFARLAND  | 35    | ORTH       | 35      | RINKE       | 33     |
| KLINGMAN       | 33      | MCGOVNEY   | 13    | OTT        | 8-14    | RUSH        | 24-37  |
| KNIGHT         | 9-36    | MCGOWN     | 34    | OTTO       | 15      | RUSK        | 35     |
| KNOFFLOCK      | 12      | MCGRIFF    | 13    | OWENS      | 20      | RUSSELL     | 36     |
| KNOWLES        | 37      | MCINTIRE   | 37    | OWING      | 15      | RUTTGEN     | 44     |
| KRAUS          | 36      | MCKNIGHT   | 37    | PACK       | 6       | ROADY       | 19     |
| KREIS          | 33      | MCMILLIEN  | 14    | PACKER     | 35      | ROBBINS     | 35     |
| KRISTERSEN     | 34      | MCMURRAY   | 11    | PADEN      | 19      | ROCHELLE    | 12     |
| KRUEGAL        | 34      | MCNAIR     | 24    | PAGE       | 36      | ROCHIE      | 36     |
| KUHN           | 6       | MCPHERSON  | 20-37 | PAGGET     | 19      | ROGERS      | 18     |
| LAKE           | 35      | MEDLAM     | 3     | PARCEL     | 8       | ROSAS       | 8      |
| LANGLEY        | 6-7     | MEHEW      | 9     | PARHAM     | 37      | ROSENDALE   | 34     |
| LANNING        | 37      | MEYERS     | 18    | PARRIS     | 18-19   | ROSS        | 19     |
| LAPHAM         | 33      | MIKLES     | 33    | PARSONS    | 11      | ROWLAND     | 37     |
| LATHAM         | 10      | MILLER     | 37    | PARKER     | 7-19-37 | SACKET      | 14     |
| LAUK           | 13      | MILLHAUPT  | 36    | PARKHURST  | 12      | SADLER      | 37     |
| LAW            | 33      | MILLIS     | 12    | PATRUM     | 37      | SAFEWRIGHT  | 21     |
| LEARD          | 34      | MILLS      | 18    | PATTERSON  | 21-22   | SANDERS     | 18-19  |
| LEE            | 6-20-44 | MINNIS     | 37    |            | 37      | SANDWHERE   | 25     |
| LEWIS          | 12-22   | MISSE      | 19    | PEPPER     | 10      | SAWYER      | 43     |
| LIES           | 22-25   | MITCHELL   | 19    | PENNINGTON | 6-7     | SCHENCHR?   | 19     |
| LIGHT          | 34-35   | MITTS      | 18    | PENWELL    | 33      | SCHMIDT     | 8-24   |
| LIKELY         | 13      | MONROE     | 35    | PEOPLE     | 36      | SCHMIDTMIRE | 25     |
| LILLARD        | 33      | MONTGOMERY | 8     | PERRIN     | 18      | SCHMITT     | 33     |
| LITTLE         | 36      | MOORE      | 18    | PERRY      | 10      | SCHNEIDER   | 34     |
| LLOYD          | 34      | MORGAN     | 14    | PETERS     | 37      | SCHULTZ     | 2      |
| LOOMIS         | 24      | MORRIS     | 19    | PETTY      | 19      | SCHUNK      | 7      |
| *LOGAN         | 36      | MOSER      | 13    | PERLONE    | 20      | SCHUNKE     | 35     |
| LOY            | 8       | MOSS       | 35    | PHEASANT   | 20      | SCOTT       | 22     |
| LUMBERT        | 34      | MOTON      | 18    | PHILLIPS   | 13-18   | SEAVER      | 35     |
| MACKEY         | 35      | MOUNTS     | 37    |            | 20      | SEAVEY      | 7-16   |
| MAIN           | 34-37   | MUILENBERG | 16    | PIERCE     | 18-34   | SEBRING     | 35     |
| MALONE         | 4       | MUELLER    | 21    | PINGEL     | 10      | SEINZEN     | 24     |
| MANAS          | 19      | MURPHEY    | 34    | PLATT      | 12      | SEVENS      | 21     |
| MANLEY         | 33      | MURPHY     | 37    | PLYMATH    | 33      | SEXTON      | 21     |
| MANNING        | 37      | MYERS      | 11    | POATES     | 44      | SHAW        | 36     |
| MANSFIELD      | 34      | NEFF       | 37    | POLLOCK    | 33      | SHELL       | 19     |
| MAPLES         | 19      | NEISER     | 37    | PORTER     | 34      | SHENLEY     | 33     |
| MARGLIN        | 37      | NELSON     | 37    | POTTER     | 22-23   | SHEPARD     | 10     |
| MARLIN         | 37      | NESSLY     | 8-33  |            | 24-25   | SHERMAN     | 34     |
| MARLIN         | 35      | NESTER     | 12    | POWELL     | 36      | SHIVELY     | 37     |
| MARSH          | 35      | NEUFER     | 44    | PRAY       | 7       | SIMON       | 25     |
| MASTON         | 33      | NEUHAUFF   | 22-24 | PROSSER    | 33      | SIMMONS     | 33     |
| MARTIN         | 35      |            | 25    | PROUD      | 34      | SIMONSEN    | 34     |
| MATTESON       | 33      | NEWMAN     | 15    | PRUTSMAN   | 43      | SINGO       | 25     |

SIPPY 23-24-25  
 SITES 34  
 SIXKILLER 18  
           19-20  
 SLOCUM 9  
 SMALLWOOD 20  
 SMARSH 24  
 SMITH 3-11-19  
           22-33-34-36-37  
 SMYTHE 37  
 SNYDER 34  
 SOMERS 3  
 SONERY 24  
 SPAULDING 10  
 SPEAR 20  
 SPEARS 35  
 SPEER 12  
 SPENCER 36  
 STAHL 37  
 STEIN 35  
 STERNBURG 33  
 STILES 11  
 STILL 18  
 STOCKERT 33  
 STONE 33  
 STORY 34  
 STOUT 6-7-37  
 STOVER 14  
 STRINK 25  
 STROBLE 23  
 STRUNK 25  
 STUMP 13  
 STUVEN 37  
 SUMMERHEUSER 23  
 SUTHERLAND 33  
 SUTTEN 24  
 SWAN 11  
 SWARTSFAGER 3  
 SWINEFORD 16  
 SWINGEL 14  
 TALBOT 20  
 TATE 15  
 TEDMOND 23  
 TEED 24  
 THACHER 35  
 THOMAS 19  
 THOMASON 18  
 THOME 25  
 THORNTON 20  
 THORP 22  
 THORPE 34  
 TIERMSKI 19  
 TIHEN 8  
 TOBIN 35  
 TODD 34  
 TOY 36

TRAVIS 35  
 TRUE 14  
 TUCKER 14  
 UHL 35  
 UNANGST 34  
 UNRUH 8  
 VALENTINE 35  
 VANCE 34  
 VANDAVEER 44  
 VANGUNDY 10  
 VANHORN 23  
 VICKERS 22  
 VIGUS 13  
 VINTON 14  
 VULGAMORE 37  
 WAGNON 19  
 WAHLE 33  
 WALKER 21-22-23  
           24-36-37  
 WALKINGSTICK 19  
 WALLIS 26  
 WAPELHORST 8  
 ward 36  
 WARNER 26  
 WATSON 36  
 WATTS 20  
 WEAVER 7-9  
 WEBB 7-15  
 WELLS 44  
 WELSH 37  
 WEST 20-33  
 WETMORE 33  
 WETTA 25  
 WHITE 14  
 WHITEKER 34  
 WHITEMAN 34  
 WHITLOCK 21-23  
 WHITMIRE 18-20  
 WHITMORE 37  
 WICKHAM 15  
 WILKERSON 18  
 WILKEY 18  
 WILKINS 33  
 WILKUS 24  
 WILLIAMS 34-37  
 WILLICH 11  
 WILLIS 18  
 WILLS 9  
 WILSON 34  
 WINTERS 15  
 WITT 19  
 WOOD 33  
 WOODIN 8  
 WOODROOF 6  
 WOODRUFF 8  
 WOODS 36

WOLF 37  
 WOLFF 34  
 WOLFINGTON 10  
 WRIGHT 20-33  
 WYCKOFF 14  
 WYLIE 33  
 YAHN(YALM)22-23  
 YAPLE 34  
 YARD 34  
 YORK 14  
 YOUNG 6-15-33  
 YOUNGWOLF 20  
 YUNGMEYER 34  
 ZENNER 22-23-24  
 ZINN 35  
 ZONNER 25

\*MCGEE 19  
 \*STRUTHERS 13

\* Denotes not in  
 alphabetical order.

# Notice



Queries and material  
 to be published in  
 Volume XX #2 must  
 reach the Editor  
 by July 20th.



OLD PHOTOS CAN BE COPIED AND REDUCED

Photographs become more valued and cherished when the memories of a moment begin to fade in the recesses of the mind. Yet a quick glance at an old picture can instantly revive memories of events, special feelings or younger faces and newer places.

With my photographic equipment, I can copy virtually any photograph (b/w or color) and reproduce it to any size, big or small. My specialty involves the reduction of old family pictures to postage stamp size (see sample) for genealogy files and family trees.



REDUCED SIZE



For \$16.50 (this includes postage), I copy the original b/w print and make 30 small reproductions. I'll return your original print with the order, unharmed, and I'll keep the new negative on file for future reprints in the event that the original photo would become lost in later years.

Send to: BILL YOUMANS / PHOTOGRAPHY  
P.O. BOX 47506  
WICHITA, KANSAS 67201  
(316) 943-8818

30 B/W PRINTS from ORIGINAL (can copy b/w from color picture)..\$16.50  
30 COLOR COPY PRINTS from ORIGINAL.....\$23.50

Name \_\_\_\_\_ Phone \_\_\_\_\_

Address \_\_\_\_\_ City \_\_\_\_\_ State \_\_\_\_\_ Zip \_\_\_\_\_

# of Original Prints Enclosed \_\_\_\_\_

# of B/W copy jobs \_\_\_\_\_ X \$16.50 = \$ \_\_\_\_\_

# of Color copy jobs \_\_\_\_\_ X \$23.50 = \$ \_\_\_\_\_

Total amount of enclosed check \$ \_\_\_\_\_

(Make check payable to Bill Youmans / Photography. Allow 2-3 weeks for delivery. Designate whether copies are to be made in color or b/w. We are not responsible for undelivered materials.)

MIDWEST HISTORICAL & GENEALOGICAL SOCIETY  
PUBLICATIONS FOR SALE

|  |         |
|--|---------|
| EDWARDS HISTORICAL ATLAS of Sedgwick County, KS, 1882, Reprint, History,<br>Landowners names and facts, Indexed, Hard cover,   | \$30.00 |
| Kansas Residents Sales Tax   | .90     |
| Shipping   | 3.00    |
| EDWARDS HISTORICAL ATLAS of Sumner County, KS, 1883, Reprint, History,<br>Landowners names and facts. Indexed, Hard Cover,   | 30.00   |
| Kansas Sales Tax   | .90     |
| Shipping   | 3.00    |
| List of Cemeteries in Sedgwick County, KS, Location  | 3.00    |
| Mailing  | .65     |
| Wichita Death Certificate Information from Certificates, City Directories,<br>and Cemeteries, 340 pages, 1887 to 1900  | 30.00   |
| Mailing  | 4.00    |
| 1875 Sedgwick County, KS Census with Index, 247 pages, Soft cover  | 20.00   |
| Mailing  | 3.00    |
| 1870 Sedgwick County, KS Census with Index, 42 pages, Soft cover   | 5.00    |
| Mailing  | 1.50    |
| 100 Years of Wichita, KS Firefighter Records, 1880-1980, pp  | 10.00   |
| Mt. Hope Cemetery Tombstone Readings, Near Mt. Hope, Greeley Twp, Sedgwick,<br>County, Kansas  | 12.50   |
| Mailing  | 3.00    |
| Miscellaneous Cemeteries, Afton, Eldridge, Old Fairview, Jamesburg, Park,<br>Kechi, Herrington, Mulkey, Old Clommel, Lutheran (White Cotton), Pleasant<br>Ridge, Ruby Tombstone Readings, Vol. I | 15.00   |
| Mailing  | 3.00    |
| Synopsis of Butler County, Kansas, Wills, 1869-1901, pp  | 7.00    |
| Butler County, Kansas Marriages, Grooms with Bride Index, gives ages<br>& date of Marriage, 1861-1885  | 10.00   |
| Mailing  | 2.50    |
| Butler County, Kansas AREA KEY, 50 pages   | 5.00    |
| Mailing  | 1.50    |
| Harvey County, Kansas Marriages, 120 pages of Grooms, 20 pages of<br>Brides, 1872-1895   | 18.00   |
| Mailing  | 4.00    |
| Kansas Territorial Marriages, 24 pages, 1854-1861  | 5.00    |
| Mailing  | 1.50    |
| Sedgwick County, Kansas AREA KEY, 78 pages, Soft Cover   | 8.00    |
| Mailing  | 2.00    |
| 1883 Wichita City Directory Names, 73 pages, Soft cover  | 8.50    |
| Mailing  | 2.00    |
| 1885 Wichita City Directory Names, 118 pages, Soft cover   | 10.00   |
| Mailing  | 2.50    |

|   |       |
|---|-------|
| 1888 Sedgwick County Directory Names, 10 pages, Soft cover  | 3.00  |
| Mailing   | 1.00  |
| 1891 Sedgwick County Directory Names, 8 pages, Soft cover   | 2.50  |
| Mailing   | 1.00  |
| 1878 Wichita City Directory Names, 72 pages, Soft cover   | 8.50  |
| Mailing   | 2.00  |
| KANSAS - This 8 page booklet shows the counties in Kansas and when they were orgainized, Shows the Santa Fe Trail and STSF Railroad | 1.65  |
| Kansas Atlases and their location, pp   | 4.00  |
| 1905 Landowners Maps, Sedgwick County, Kansas, each township, 14" x 14" each, pp  | 1.25  |
| History of Grand River Township, Sedgwick County, Kansas, 1882, 1905 and 1984 Landowners Map  | 3.00  |
| Mailing   | 1.00  |
| INDEX to Portrait & Biographical Album, Sedgwick Co. Kansas, 1888 166 pages   | 20.00 |
| Mailing   | 3.00  |
| TOTAL AMOUNT OF THIS ORDER  |       |
|   | \$    |

Name \_\_\_\_\_

Address \_\_\_\_\_

City \_\_\_\_\_ State \_\_\_\_\_ Zip \_\_\_\_\_

Make checks payable to MHGS and Mail to:

MIDWEST HIST. & GEN. SOCIETY  
P.O. BOX 1121  
WICHITA, KANSAS 67201

\* If you are interested in a search of the above materials, write to above address.  
Kansas Residents must add 3% sales tax to order.