



MIDWEST Historical and Genealogical REGISTER

**Vol. XVIII Oct. - December 1983 No. 3
Wichita, Kansas**

CONTENTS

No. 1

PUBLISHED QUARTERLY BY THE MIDWEST HISTORICAL & GENEALOGICAL SOCIETY

NO. 3

FROM THE PRESIDENT

At this time of year, my thoughts turn to endings and to new beginnings. The trees are ending their cycle, dropping leaves to help cover the brown funny looking bulbs that I have planted to rest all winter and burst into Rainbow colors in the Spring. About the time these tulips bloom, my term as President will end and a fresh new Board will begin their tasks of helping Midwest to grow and prosper.

I would like to take this opportunity to say to the current Board "Thanks Gang!" We did some stumbling and going in odd directions at times but we all had a common goal and, "by George", we got it together and became a team. You've been a great team to work with and you have a lot to be proud of; the successful Bake Sale, the Highland Cemetery project, the large turn out and 30 new members at the Classes, the terrific Seminar and the good programs all year. Also, the new look in the Library makes us proud. Thank you to all the members who have helped with these projects; without you, all the great ideas the Board comes up with would go nowhere.

Now, I need to ask for HELP! Our lease at Cowtown will definitely End 1 December, 1984. That isn't far off. We hate to leave, but as most of you know our buildings are too small and too hot in summer and too cold in winter. Please be aware that we need a new home. Our Library Expansion, formerly, Building Fund, is not growing nearly fast enough. So, let us all keep our eyes open and ears finely tuned for any possible home for our Library. We can do it if we pull together.

My thanks to all of you for your constructive criticism, words of encouragement, support and help.

Happy Holidays and Happy Digging!

Louise Ecton

P.S. Continue bringing in 'tops' for our Boxtops Buy Books" program. If you do not know about "BBP, please, check with someone in the Library Office. l.e.

FINDING FAMILY DOCUMENTS.....WHERE TO WRITE.....

VITAL RECORDS..birth or death, marriage, divorce, how to speed search. No matter what kind of record you are seeking, be sure to state the purpose for which the copy is needed, and your relationship to the person whose record is requested. The file-searching fee--which varies from state to state-- should be paid by money order or certified check. The address of the vital-statistics office in each state and the fee charged are listed in an 18-page booklet, "Where to Write for Vital Records", published by the Department of Health and Human Services. For a copy, send \$3.25 to the Consumer Department 216L, Pueblo, Colorado 81009.

chairmen Report

PROGRAMS FOR GENERAL MEETINGS (MHGS)

BETTY BERNSTORF, CH.

Meetings: 2nd Saturday of month....Watch for Alert as to place.
2:00 p.m.

December...HAPPY HOLIDAYS ! No Meeting

January 14 Computers in Genealogy."Hands on program", Bill Estep

February 11....Scotch Irish Ancestors...Prof. Borne, W.S. University

March 10..... Election of Officers.....end of year!

+++++

MEMBERSHIP.....

The NEW MEMBERSHIP DIRECTORIES for 1983-1984 are now
AVAILABLE at the MHGS Library Office. Price. . \$1.25.

A Big Thank You to Blanche Craft for doing ALL of the
typing and to Gwen Harper for designing the book.

IRENE EVERS, MEMBERSHIP CHAIRPERSON

+ + + + +

WAYS AND MEANS.....

MRS. ANITA SICKMON, CH.

We are in the process of preparing the 1870, 1875, 1880 and 1885
CENSUS of Sedgwick County, Kansas for Publication.

We are offering FOR SALE "TOMBSTONE
INSCRIPTIONS" from some of the older
Cemeteries . They will be grouped accord-
ing to the area of the County, the larger
ones may be sold, individually.



FOR SALE: The 1885 "PORTRAIT and
BIOGRAPHICAL ALBUM of SEDGWICK
COUNTY, KANSAS"

Full page portraits and biographical sketches
of Prominent & Representative Citizens of
the County. Includes Every Name INDEX
166 pages of individual names.

TWO VOLUMES.....\$65.00
plus \$1.95 Kansas sales tax;\$4.00 shipping
costs. Order to: Mrs. Anita Sickmon
Route 1, Box 241
Cheney, Kansas 67025

Make checks payable to Midwest Historical & Genealogical Society, Inc.

+++++

NOTICE:

Due to an unforeseen problem, the 1887 SEDGWICK COUNTY MARRIAGES
and 1875 LAND PATENT RECORDS will not be in this issue. YES, next one!

LIBRARY LORE

The long, hot summer is finally over and we're positive that you are as glad as we are that we will not have to endure the heat in the Library and office for a few months.

We have a number of new members so it is a good time to review a few of the library rules.

1. Members must show their membership cards to check out books or other material in the Library. With over six hundred members it is impossible to know everyone so we must abide by this rule.
2. Members may check out three (3) books or bound volumes of material on their card. Each person on a family (2) membership may check out three (3) books or bound volumes on their cards.
3. Materials are checked out for a period of two (2) weeks. There is no renewal privilege except with the permission of the Librarian.

DATES TO REMEMBER:

- Thanksgiving - The Library and Office will be closed for the Thanksgiving holiday on November 26 and 29.
- Christmas - The Library and Office will be closed December 24, 27, 31 and January 3 for the Christmas and New Years Holidays.
- Inventory - The annual inventory of our holdings will be held on February 14, 15, and 16. Last date to check out material is January 24 with all material returned to the Library by February 7. Mark your 1984 calendar with these dates and plan to come and help.

Every week new material is added to the Library. Be sure to check the new book shelves when you are in the Library for incoming materials. If there is a book or other material that you think the Library should have let one of the Librarians know. We might be able to purchase it.

Bill & Teresa Pennington

Beverly Arbuckle

+++++++†++++†+++++++

There seem to be quite a few queries about where to research for specific facets of family history. Beverly Malone suggested we might list the libraries in our area and mention specific information each one has as well as general genealogical material. The following page lists libraries in driving distance. If we have omitted a good source library, let us know. (ed)

SEND IN YOUR QUERIES FOR THE NEXT ISSUE BY January 1, 1984 !

AREA RESEARCH LIBRARIES

Most County Seats and Towns that have a Public Library have some Genealogical information as well as Courthouses and Genealogy Society Libraries. The following Libraries have good genealogical information that will help researchers.

NAME and ADDRESS	SPECIAL INFORMATION
Midwest Hist. & Gen.Society Library (Historic Cowtown) P.O. Box 1121, WICHITA, KS. 67201	Large Magazine Section from Societies throughout U.S. Reference <u>books, etc.</u>
WICHITA PUBLIC LIBRARY 203 S. Main, Wichita, Ks. 67202	Large Gene. section; Kansas; Census, index & microfilm Civil War; Pa Archives, DAR etc
GENEALOGY LIBRARY OF CHURCH OF THE LATTER-DAY SAINTS (MORMON)ph.683-2951 7011 East 13th, Wichita, Ks. for hrs.	microfische for ordering film from Salt Lake City Archives
WICHITA STATE UNIVERSITY LIBRARY located on 3rd floor (N.E. corner) 1845 Fairmount, Wichita, Ks. 67208	Wichita newspapers (film); Local, County & State History
FRIENDS UNIVERSITY LIBRARY 2100 University, Wichita, Ks 67213 (Edmund Stanley Library)	Excellent source for Quaker records.
NEWTON PUBLIC LIBRARY NEWTON, KANSAS 67117 (Harvey Co.)	Has good early New England section
Mennonite Library & Archives Bethel College Newton, Kansas 67117	Has Mennonite records as well as German information
HAYSVILLE COMMUNITY LIBRARY 230 East Grand Haysville, Ks. 67060	Though fairly new library, has quite a lot of local hist. and genealogical material.
HUTCHINSON CITY LIBRARY (Reno County) (Reno Co. Genealogy Society Hutchinson, Kansas 67501	Area history records, etc. <u>Atlas</u>
Bethany College Library Lindsborg, Kansas	Swedish history
SALINA PUBLIC LIBRARY SALINA, KS. 67401	Kansas Room
WOLDT LIBRARY 908 Kearney Manhattan, Kansas 66502	A privately owned Library with a lot of genealogical information.
Kansas State Univeristy Library Manhattan, Kansas 66502	Genealogy section <u>open Mon - Sat. 1:30</u> Kansas State DAR library Western Kansas records open to members; others \$1.00
Kansas Genealogy Society Library P.O. Box 103 Dodge City, Kansas 67801	

Continued on page 102

AREA RESEARCH LIBRARIES/continued:

HAYS PUBLIC LIBRARY-Kansas Room
1205 Main Street
Hays, Kansas 67203

Kans. Collection contains
4000 volumes and 56 periodicals
on Kans. history & genealogy.
Vertical files has inf. each county

Topeka Genealogy Soc. Library
Indian Center Bldg.
915 N. Western
Topeka, Ks. 66604

Excellent collection of records
usually open Wed. p.m. Thurs.
10 a.m-2p.m. Sat. 1 p.m.-5p.m.

KANSAS STATE HISTORICAL LIBRARY
120 West 10th Memorial Bldg.
Topeka, Kansas 66612

Has about all newspapers ever
published in Kansas, most on
film; Fed. Census 1790- 1860
Territorial Census. State Census.
Soundexes on microfilm. etc.

FEDERAL ARCHIVES & RECORD CENTER
2306 E. Bannister Rd.
Kansas City, Mo. 64131
phone 926-7271 area no.816

UNITED STATES DEPT. OF COMMERCE
BUREAU OF CENSUS
Pittsburg, Ks. 66762

OKLAHOMA State Library
109 Capitol
Oklahoma City, Okla. 73105

Census after 1900. Send in
Application for Search of Census
records. Fee \$12.00
Information at MHGS Library

BEWARE! BEWARE!

We continue to hear or read of misleading advertising sent in the mail by unscrupulous persons wishing to make an easy dollar. Recall the Beatrice Bayley "Family History Books"? Another similar and misleading advertisement is in the mail from a Jack Evans of New Castle, Delaware."

Latest bit of dishonesty is a man named, Walter Manning, using a P.O. Box in Eugene, Oregon, advertising the sale of books and when the money is sent, no book is received. Police and Post Office have been alerted. Also, watch out for a Stan Schirmacher. He sends several items that are not worth the price."

Sharon L. Taylor asks you to send as high as \$50 for "The Amazing Story of the _____ Family of America. You are to order immediately or the chance is lost forever. You get a basic how-to book, available in any library, a print out of all the surnames from phone books and blank pages for you to fill in your genealogy. Most libraries have these phone books." from The Jotted Line, Fresno Genealogical Society, Oct. 1983

WILL SHARE INFORMATION.."THUMA"..EYERLY FAMILY"

"History of Hancock County, Illinois, will allow interested persons to look at this book

In JY Sept. Register in the article about Boom Town, a Charles THUMA is mentioned. "I have the Thuma Family History and EYERLY Family History and will share with anyone researching these families.

Mrs. Velma L. Hall, 423 S. Chestnut, Douglass, Ks. 67039-0691...
phone no. 316-746-2833.

SUNFLOWER SEEDS

Perhaps one of these will blossom in your genealogical garden!

Once again the State and Federation news has been light. It will afford space to pass along some gleaned news. Hopefully, one or more of these are interesting and useable. None are guaranteed to put one over the hill, but may fuel one more step.

During the younger years of many of us, the various railroads employed something over ten percent of the work force. Railroad employment of course, grew rapidly following the Civil War. Therefore, it is quite likely that some of our ancestors did spend some time there. Partly as a result of the many railroad mergers of recent years, vast amounts of old records are being disposed of. Much of this is transferred to Historical Societies. Various railroad oriented groups are active in the field. One of these (Chicago area) has given some 300 boxes of material to sort and transfer to a regional history center. As an example, this collection has engineer's service records from the 1880's, payroll lists and Liberty Bond (1918) purchases. It would enhance the family history to view records like these. Will attempt to locate a listing of these groups and report on it at a later date.

Fr. 'Chicago Genealogist' Winter 1983 p. 99

Assisting the future genealogist or family historian may be handled simply in one's own will. Addition of a paragraph giving pertinent names, dates and locations of parents, self, marriages and children. Additional helps would be naming membership in Lineage Societies, Lodges, Family associations, etc. Libraries and others to whom personal or family compilations have been donated would be helpful.

Fr. 'Buried Treasures' Cent. FL G&H Soc. Apr. 1983 p. 5

Canadian Maritime Provinces; Addresses of repositories having genealogical material and numerous volumes of references.

Fr. 'MN Genealogist' June 1982 p. 61

The Federation of Genealogical Societies "Newsletter"

Croatian Gen. Soc. Archives have 120,000 names of Croatians here prior to 1914. Also, 4,000 Coats of Arms, along with the usual items found in archival collections. May p. 134

There are occasions when it is prudent to employ a researcher in a particular area. An informative article covering the services that can be expected of a researcher and the input the researcher needs from the requester. June-July p. 1

Kansas Council of Genealogical Societies "Review" Sept. 1983

LaRita Neely of Silver Lake, KS was elected President in the August balloting. Charles Carter of Chanute, KS also elected as Vice-President. These are two year terms of office. We wish them well.

SUNFLOWER SEEDS/continued. . . .

Chanute will be the site for the tenth annual meeting and workshop of the State Society. Dates are June 8 & 9, 1984.

Another trip to Salt Lake City is planned for April 27-May 6, 1984.

Publications announced;

Johnson Co. KS Cemeteries, 28,000 names. Aug. p. 21
Neosho Co. 7764 Marriages 1864-1915. Sept. p. 14
Jewell Co. Cemetery Records; the first of five, it covers six townships. Remainder planned for 1983 completion. Sept. p. 14

by George I. Gird

=====

SUMNER COUNTY, KANSAS EARLY DAY POST OFFICES/Continued from Vol.18
no. 2

POST OFFICE	ESTABLISHED	CLOSED	FIRST POSTMASTER
VALVERD	Dec. 31,1885	May 21,1886	Joseph G. Fritch
WHITMAN	June 16,1890	Mar.30,1907	Leelon E. Davis
ANSON (Purcell)	Jan.20,1887	Oct.31,1958	Wesley Purcell
ARGONIA	June17,1881		Amos B. Cook
ASHTON	Feb. 26,1887		John L. Elliott
BELLE PLAINE	Apr. 17,1871		James Hamilton
CALDWELL	May 29,1871		Charles H. Stone
CICERO	Apr.24,1883	Jan.15,1934	William Hedrick
CONWAY SPRINGS (Glen Val.Cisne NNorthfield)	Oct.13,1884		John Dautrich
CORBIN(Hurst)	Feb.6,1884		George McCleary
DALTON	Sept.7,1885	Jan.14,1939	George Daugherty
DRURY	May8,1884	Aug.31,1921	James VanWegen
GEUDA	June 19,1882	Jan.10,1900	Joseph F. White
GEUDA SPRINGS	July 29,1871		
HUNNEWELL	Aug. 12, 1880	Mar. 31,1960	F.P. Schiffenhauer
MAYFIELD (Bellevue,Morengo)	Sept. 8,1880		Henry Shapcotte
MILAN	Feb.15,1875		Francis M. SHORE
MILLERTON (Rolling Green)	Sept.3,1884		Martin L. Sparr
MILTON (Levy)	Oct.15,1887		A. Fred Mumme
MULVANE(Littleton)	Sept.1, 1879		James S. Brown
OXFORD(Neptawah)	Oct.27,1879		Marcus L. Binkley
PERTH	July 25,1882	Apr. 30,1954	Benniah Grove
PORTLAND	May 19, 1886	Jan.31, 1940	Samuel F. Davis
RIVERDALE	Jan.26,1887		Edward Cornwell
ROME	Jan.6,1874	Dec. 30,1933	Thomas A. Hubbard
SOUTH HAVEN	Oct. 5,1871		Seymour DYE
WELLINGTON	July 21,1871		
ZYBA (Dublin)	Oct. 17,1887	May 14,1906	James W. Wills

From Kansas State Historical Society.

A PLAN FOR FILING PEDIGREE SHEETS

Two years ago, while visiting a distant Missouri cousin, in search of information of a great, great, grandfather, she showed me a letter received by her father from a lady in Topeka, Kansas. The Topeka lady indicated a joint ancestor and asked for any information available on that ancestor. As happens occasionally, the Topeka lady received no answer to her dated query. Her SASE had a 13¢ stamp on it.

Hot on the trail of an additional generation trophy, I wrote to this lady. The Postal department returned my letter marked "Return to Sender, Addressee deceased!". A check of the phone book showed only one name (male) same as the deceased lady's. I visited with this gentleman who was the lady's widower.

"I was going to get rid of all that genealogy stuff but my son said he wanted it so he took it with him when he moved to New York." I got the son's address and telephone number and after two unanswered queries, I reached him by telephone.

"All of mother's genealogical junk disappeared when my apartment was broken into and I suppose the robbers took it." (It would seem the robbers placed more value on the paperwork than the family did). I could visualize those genealogical papers being held for ransom by hardened kidnappers somewhere in greater New York City?? After asking that the lady's son contact me when the ransom note was received I hung up and gave up on that lead!

Last month someone (Registrar) noted that the membership of Midwest Historical and Genealogical Society were not filing their pedigree charts as requested. "Me-too; I haven't done this filing either !

Suddenly it dawned on me why this filing of pedigree records is so important. If the Topeka lady had belonged to a Genealogical Society and had filed her charts, that Genealogical Society would probably give me access to those papers.

She did, she had, and they did! and there was the elusive great, great grandfather plus one more generation back !

SO, if you haven't filed those pedigree charts with our Society, get busy. Who knows when that record could provide the only source available for some long searching genealogist!

Contributed by John Handley

EARLY SETTLER NEAR BELLE PLAINE, SUMNER CO.KS.

Thomas Benton Peddecord (1842-1911), Decatur, Ill., married Cleopatra McKinney (1844-1906) Clinton, Ill. 22 April, 1866. With children, Charley b.1867, Cora Sue b.1870, and Henry b.1872 settled 3 miles east and 1 mile south of B.P. in 1875. Another son Joseph was born 1878.

ADDITIONS TO OUR LIBRARY SHELVES



- A-74 Historical Atlas Sullivan Co., MO 1877
- A-75 Piedmont North Carolina Maps
- B-Gen-11 Websters Biographical Dictionary
- D- A Number of Directories have been donated
- F-34 1840 Census Wayne Co., Ohio
- F-35 Lee of VA, First Church in Hartford, Griffin's Journal Simsbury, CT
History of the Lawrence-Townley & etc., History of Harrison Co., Iowa
- F-36 Past & Present of Kane Co., Illinois
- F-37 Portrait & Biographical Album of Jo Daviess & Carroll Counties, Ill.
- F-38 Portrait & Biographical Album of Whiteside Co., Illinois
- G-B-23 Who Begot Thee? Bent, Brown, Rice, Felch, Longley & etc.
- G-D-17 Davis by Mrs. Vermell Blyth Downing, Mathews, Hisey, Atkins & etc.
- G-F-7 The Farwell Family Vol I & II by Frederick & Fanny (Barber) Farwell
- G-G-13 The Gillispie Family Tree with Related Families by Opal Sutherland
- G-H-24 The Houston Family in VA by Leslie L. Campbell
- G-H-25 Bold Legacy, The Story of the Houston-Huston Ancestors
- G-I-1 The Family of George & Jessie MacQueen Innes Immigrants to Maine
- G-L-6 The Descendants of John Linscott by Harold L. Linscott
- G-M-20 A Genealogy of the Merrick Family of MA 1636-1902
- G-S-35 Puritan Migration to CT Saga of Seymour Family by Malcolm Seymour
- G-W-21 Wright-Briscoe Pioneers by John C. Wright
- G-W-22 Wood Works Vol I & II by Mrs. J. M. Woods, Jr.
- G-W-23 Woods-Wallace Cousin Clues by Ruth Petracek
- G-W-24 The Wood Family Index by John S. Wood, Sr.
- G-W-25 William Wood of Earlsferry, Scotland & Some of His Descendants & Their
Connections by J. Walter Wood
- G-W-26 The Warren Family Historian, Editor Jim Warren
- G-W-27 Wooten & Related Families Assoc. Quarterly
- I-79 Borderland Books
- KC-46 Johnson Co., KS Cemetery Index Vol III
- KC-91B Goodland City Cemetery Inscriptions
- M-60-34 The Forsyth Co Genealogical Soc. Journal, Winston-Salem, N.C.
- MicF-5 Northern Family in U.S. 1635-1900 Bridging the Gap 1900-1960
- MicF-6 Ancestors & Decendants Abraham Hammer of Philadelphia Co., PA &
Randolph Co., NC 1683-1983
- NH-33 Men of Concord by Henry D. Thoreau
- NH-34 Proud Desting by Lion Feuchtwanger
- NH-35 The Border Lord by Jan Westcott
- NH-36 Unconquered by Neil Swanson
- R-40-12 The Centennial History of Arkansas Vols I,II,III
- R-50-7 World Conference on Records of California
- R-60-23 World Conference on Records of North Carolina
- R-70-14 World Conference on Records of South Carolina
- R-150-4 Abstracts of Colonial Will of the State of Georgia 1735-77
- R-150-5 Some Early Tax Digests of Georgia
- R-180-39 History of Whiteside Co., Illinois
- R-180-40 The Farmers' Review Farm Directory of McLean & Livingston Counties, IL
- R-200-16 History of Davenport & Scott Co., Iowa Vol I & II
- R-200-17 History of Linn Co., Iowa Vol I & II
- R-200-18 History of Johnson Co., Iowa 1836-1882
- R-200-19 Old Settlers' Assoc. Yearbooks 1866-1925 Johnson Co., Iowa
- R-210-122B Directory of Historical & Genealogical Societies in KS 1983
- R-210-154 Moments from History Logan, KS
- R-210-155 Marriages of Neosho Co., KS 1864-1915
- R-210-156 Century of Memories, History of Mount Hope, KS & Greeley Twp 1870-1983

ADDITIONS TO OUR LIBRARY SHEOVES/ continued

- R-210-157 Commemorative Centennial Peabody 1871-1971
- R-210-158 Land of the Post Rock University Press of KS
- R-210-159 Historic Kansas by Margaret Whittemore
- R-260-12 The Old Families of Salisbury & Amesbury, MA
- R-270-5 World Conference on Records in Michigan
- R-340-4 Landmarks in Ancient Dover, New Hampshire
- R-350-13 World Conference on Records in New Jersey
- R-360-1 World Conference on Records in New Mexico
- R-370-19 World Conference on Records in New York
- R-380-45 World Conference on Records in Ohio
- R-380-46 Cemetery Inscriptions Preble Co., Ohio Vol 1,2,3
- R-380-47 Abstracts From The Eaton Democrat Preble Co., OH 1877-1881
- R-410-74 Index to Fayette Co., PA 1783-1900
- R-410-75 Fayette Co Newspaper Extracts 1805-1854
- R-410-76 Register of Invalid Pensions Revolutionary Service 1789
- R-420-2 World Conference on Records-Rhode Island
- R-430-31 World Conference on Records in Tennessee
- R-430-32 Wayne Co., TN Marriages & Cemeteries
- R-430-33 Overton Co., TN Genealogical Records
- R-440-12 World Conference on Records in Texas
- R-480-13 Kanawha Valley Cemeteries(W.VA) Vol I
- R-600-75 The Great American West by James D. Horan
- R-600-76(L)The Old Pike and the National Road by Robert Bruce
- R-600-77 The National Register of Historic Places 1972
- R-600-78 Pioneers in Protest by Lerone Bennett, Jr.
- R-600-79 Chronology of the U.S. Navy 1775-1965
- R-600-80 Colonial Soldiers of the South 1732-1774
- R-610-41 World Conference on Records
- R-620-58 World Conference on Records-Switzerland,Spain, Italy, Russia,
Yugoslavia, Czechoslovakia
- R-620-59 World Conference on Records-Scandanavian
- R-620-60 World Conference on Records-S.Africa, Ivory Coast, Egypt, India,
E. Asia, Japan, Polynesia, Oceania, Australasia, Pacific
- R-620-61 World Conference on Records-Austria, Hungary
- R-620-62 World Conference on Records-Mexico, S. America, Central America
- R-620-63 World Conference on Records-Canada
- R-620-64 World Conference on Records-France Belgium
- R-620-65 World Conference on Records-Germany
- R-620-66 World Conference on Records-British, Wales, Ireland, Scotland
- R-620-67 Directory of Scots Banished to the American Plantations 1650-1775
- R-630-17 World Conference on Records-American Indian
- R-630-18 A Bibliography of Sources for Black Family History in Allen Co., IN
Public Library
- R-630-16 Cherokee Blood Vol III
- R-640-23 World Conference on Records-Huguenot, Jewish, Quaker
- R-640-24 The Lexington Presbytery Heritage
- R-640-25 Highways & Byways of Appalachia (Presbyterian Church in the US)
- R-640-26 From the Steppes to the Prairies (1874-1949)
- R-640-27 200 Years in the Shenandoah Valley
- R-650-28 Bonded Passengers to America
- R-660-65 US Census 1850 Sullivan Co., TN
- R-660-66 1870 Sedgwick Co. KS Census

COMPILED by MARY JO HORN

We will publish your Ancestor Charts (5 generation preferred)
and Bible Records. Deadline for next issue is Jan. 1, 1984

NEW BOOKS IN THE GENEALOGY DEPT., WICHITA PUBLIC LIBRARY, JULY THROUGH SEPTEMBER,
1983 compiled by Marsha Stenholm

- R 929.2 The Descendants of John Linscott. - compiled by Harold L. Linscott.
L759D
- R 929.3 Wills of Richmond County, Virginia, 1699-1800. - by Robert K. Head-
H433W ley, Jr.
- R 977.352 The History of Peoria County, Illinois. 1880.
HIS
- R 977.352 Peoria (Illinois), Picturesque and Descriptive. 1888.
PEO
Oversize
- R 929.2 The Chandlers of Kansas; a Banking Family. - by Billy M. Jones.
CHANDLER
Ks. Ref.

NEW FILMS AT THE WICHITA PUBLIC LIBRARY: We now have all of the 1915 State Cen-
sus of Kansas except rolls 259-268 and roll 270 (most of Wyandotte County).
For a complete list of the 1915 rolls, please check at the library.

NEW BOOKS IN THE GENEALOGY DEPT., WICHITA PUBLIC LIBRARY, JANUARY - MARCH, 1983

- R 978.132 The History of Onaga (Kansas) and ... - by The Onaga Historical Society.
HIS
Ks.Ref.
- R 978.137 Index to Winchester, Kansas, Newspapers, 1877-1899. - compiled by Ray-
IND mond E. Riley.
Ks.Ref.
- R 978.154 Little River, Kansas, Centennial, 1880-1980.
LIT
Ks.Ref.
- R 978.1723 Grant County, Kansas.
GRA
Ks.Ref.
- R 978.1861 Wichita; the Early Years, 1865-80. - by H. Craig Miner.
MIN
Ks.Ref.
- R 978.196 History of Big Hill and Old Mount Zion (Kansas). - by Ruth Nixon.
NIX
Ks.Ref.
- R 978.199 New and Complete Index of History of Cherokee County, Kansas. - com-
NEW piled by Betty Dixon Harrington.
Ks.Ref.

NEW BOOKS IN THE GENEALOGY DEPT., WICHITA PUBLIC LIBRARY, JANUARY - MARCH, 1983

- R 929.5
W678C Cemeteries, Vigo County, Indiana. Volume II. South Section. - by Virginia Wilhoite and Nelson Eddy.
- R 929.5
W785C Cemeteries of Allen County, Kansas (except Highland & Mt. Hope). - compiled by Lucile Winter & Frances Hill.
- R 973
D23D DAR Patriot Index. Volume II. - by the National Society of the Daughters of the American Revolution.
- R 973.3446
D238C Connecticut Revolutionary Pensioners. - compiled by The Connecticut Daughters of the American Revolution.
- R 974.44
B873H History of the Town of Medford, Middlesex County, Massachusetts, from Its First Settlement, in 1630, to...1855. - by Charles Brooks.
- R 974.892
W546 Weyand & Reed's Beaver County (Pennsylvania) Centennial (1876) Directory, Containing a Complete List of the Names of All Taxable Inhabitants... - compiled by J. Weyand and W.I. Reed.
- R 974.946
S1770 Old Times in Old Monmouth; Historical Reminiscences of Old Monmouth County, New Jersey... (now Monmouth and Ocean Counties). - by Edwin Salter and George C. Beekman.
- R 975.5
K267E Early Adventurers on the Western Waters. Volume I. The New River of Virginia in Pioneer Days, 1745-1800. - by Mary B. Kegley and F.B. Kegley.
- R 975.5
N96 Cavaliers and Pioneers; Abstracts of Virginia Land Patents and Grants. 1666-1732. Volumes II & III. - by Nell Marion Nugent.
- R 977.244
E56 The Encyclopedic Directory of Clay County, Indiana, Giving a List of the Householders of the County... 1896.
- R 978.123
C383 Cawker City (Kansas) Families - Our Family and Yours.
- R 978.2
S677N Nebraska, Kansas Czech Settlers, 1891-1895. - by Margie Sobotka.
- R 929.5
S661C Cemetery Records of Cowley County, Kansas. Volume 1. - by Stanley C. & Patricia D. Smith.
Ks.Ref.
- R 978.1143
DEC Decatur County, Kansas.
Ks.Ref.
- R 978.119
DRE Official Centennial History of the Volga-German Settlements in Ellis and Rush Counties in Kansas, 1876-1976. - by Norbert R. Dreiling.
Ks.Ref.
- R 978.128
SWA City of the Plains; a Story of Leonardville (Kansas). - by Phyllis M. Swanson.
Ks.Ref.

NEW BOOKS IN THE GENEALOGY DEPT., WICHITA PUBLIC LIBRARY, APRIL THROUGH JUNE, 1983

- R 929.3 Early Marriage Records of Labette County, Kansas, 30 October 1867 to
El23 13 April 1878, and 15 May 1880 to 27 March 1881.
- R 929.3 Marriage Records of Ottawa County, Kansas, Book B (Jan. 9, 1883 to
013Mb Oct. 20, 1887). - compiled by Lucille O'Brien.
- R 929.3 Passenger Arrivals at the Port of Baltimore, 1820-1834, from Customs
T3145P Passenger Lists. - edited by Michael H. Tepper.
- R 929.3 Shawnee County, Kansas, Probate Records; Index Book III (1877-1896),
T67S2 Index Book IV (1895-1901), Index Book V (1901-1908). - compiled by
 the Topeka Genealogical Society.
- R 929.3 Index to Names in Atlas of Shawnee County, Kansas (With Township Maps)
T673I ... 1873.
- R 929.3 Shawnee County, Kansas, Probate Court Index Book I and II, 1855-1891.
T673S - compiled by the Topeka Genealogical Society.
- R 929.5 Shawnee County (Kansas) Cemeteries. Two volumes. - by the Topeka
T673S Genealogical Society.
- R 973.3448 The Pennsylvania-German in the Revolutionary War, 1775-1783. - by
R515P Henry Melchior Muhlenberg Richards.
- R 976.724 Directory of Randolph County, Arkansas, 1910. - compiled by L.F.
B642D Blankenship.
- R 976.726 The Independence County (Arkansas) Chronicle. Volume 20, No.3 (April,
I38 1979).
- R 976.726 A History of Independence County, Arkansas. - by A.C. McGinnis.
M145H
- R 929.2 The Agee Register; a Genealogical Record of the Descendants of Mathieu
A265A Agee, a Huguenot Refugee to Virginia. - compiled by Louis N. Agee.
- R 978.165 Lawrence, Douglas County, Kansas; an Informal History. - by David Dary.
DAR
Ks.Ref.
- R 978.1 Ghost Towns of Kansas. - by Daniel Fitzgerald. Volume Three.
FIT
Ks.Ref.
- R 978.1215 Osborne County, Kansas, 1870 - 1930. - by the Osborne County Genealogical
OSB and Historical Society. Volume II, Parts 1 and 2.
Ks.Ref.
- R 978.131 Annunciation Catholic Church (Frankfort, Kansas) Centennial History and
ANN Pictorial Album, 1880-1980.
Ks.Ref.
- R 978.1645 Yesterday's Tomorrow; a History of Strawn, Kansas, and Surrounding Ter-
ATH ritory. - by Mary Lou DeLong Atherly.
Ks.Ref.

computer

COMPUTERS.....The following persons and members of our Society have entered their name in the Computer file:

<u>VIC 20</u>	Frank Bergquist	phone no. 522-0463
	*William (Bill) Estep	945--659
TRS -80 Color	Louise Ecton	775-5517
	Bonnie Johnson	945-0659
TRS-80Model III	Oland Green has:	522-2519
	(disk) Genealogy Program, Word Processor, Editor	438-2367 (Burden, Ks.)
KAYPRO II	Rex Finley has:	686-6341
	(2 disk), Printer (12 pitch only)	
	Word Processing, Data base, Spreadsheet.Subscribes to the "Genealogical Computing" publication	
Barbara Marsh	Roots/M Demo disk; misc.	943-3932
OSBORN I	Lenora Heatherman	733-1602
TI-99/4A	Kendra Olson	684-6800

* William Estep will present a "hands on" program for our January MHGS Meeting.

"It is the coming thing, folks! Let us get together and learn how to make these machines work for us. I do know this little machine will "index" 'like greased lightning', but that is only the tip of the iceberg.

Those of you who have computers and haven't sent your name in for our file, please send your name to: Louise Ecton

R.R. #3 Box 45

(or drop them off at the MHGS Library Office)

Augusta, Ks. 67010

GRAVE POLITICS

In Carlock, Ill. Democrats were traditionally buried with Democrats, only and Republicans with Republicans, only during late 19th century. This custom began with a farmer named Graham Carlock, a fiery Democrat. He wanted to see no Republicans in afterlife, so in 1840 he set aside some land for a cemetery for himself, family and some selected Deomocrats. His epitaph reads, "Here sleeps the Old Democrat" He died in 1884.

Not to be outdone, John Benson, a neighbor, made a similar bequest with some of his land, but this one was for Republicans.

Incidentally, a county line separates the graveyards which are only a quarter mile apart. The Carlock Cemetery is in Woodford County a and The Benson Cemetery is in McLean County, Illinois.

This partisanship began to break down in the early 1900s. Nobody knows why and it is possible to buy a burial plot in either section regardless of party affiliation. Submitted by Bonnie Johnson.

WE WELCOME THE FOLLOWING NEW MEMBERS:

ALDER, Emma Kate	2029 N. Woodlawn #916,	Wichita	67208
ADAMS, Trudy	1320 S. Seneca	Wichita	67213
BAILEY, James & Margaret	1634 Windsor	Wichita	67218
BERRY, Helen	3538 S. Seneca	Wichita	67217
BLASI, Mrs. Vernon	11209 W 54 Hwy.	Wichita	67209
BROWN, DARREL E.	7111 E. Castle	Wichita	67207
CHAMBERS, Harry & Olga	Rt.3 Box 31	El Dorado, Ks	67042
DAVIS, Ruby	2578 Bullinger	Wichita	67204
DERKSEN, Laurel	1632 W. 22nd #311	Wichita	67204
DOGLUAIS, Julie	1516 Pleasant View	Wichita	67203
DOUGHTY, Shirley A.	1219 Oakwood Ct.	Derby	67037
FARLEY, Sara	3402 E. 9th	Wichita	67208
FERGUSON, Marcia V.	21311 Benbow St.	Colvin, Calif	91724
FISHER, Darrel & Orlene	8301 W. Murdock	Wichita	67212
GARRINGER, Peggy	2010 N. Waco	Wichita	67203
GORDON, Mary Eleanor	1327 University	Wichita	67213
GRABHAM, Georganne	2510 E. Pawnee #1904	Wichita	67211
GROVES, Mary Ann	235 N. Dodge	Wichita	67203
GROW, Phyllis J.	813 Sunrise Ct.	Wichita	67037
+FOSTER, VIRGINIA	640 N. Rock Rd.#16	Wichita	67206
HARRIS, Leon R.	4071 Harding	Wichita	67220
HEIDT, Paul & Betty	512 Park Road	Rose Hill, Ks	57133
IBARRA, Elizabeth Taylor	7224 E. 17th St.	Wichita	67206
KOEPCKE, Douglas M.	618 Edgewood	Mulvane	67110
KREISSLER, Alice	2348 Hathway Circle	Wichita	67226
+ JOHNSON, Faunda	1320 S. Seneca	Wichita	67213
LAGER, Marjorie M.	712 S. Yale	Wichita	67218
LAUTERBACK	836 S. Fountain	Wichita	67218
LAWSON, Linda	411 Western	Haysville, Ks	67060
LESCHUK, Joanne A.	2812 W. 30th South	Wichita	67217
LOOK, Elizabeth	8006 Watson	Wichita	67207
MILLER, Georgia	1301 Dunsworth	Wichita	67212
MOODY, Thurman & Wanda	602 S. Broadview	Wichita	67218
MOORE, Dorothy L.	RR# 3, Box 219	Augusta	67010
MORNEAU, Jeanne	2006 N. Parkwood	Wichita	67208
MURRAY, Diana L.	3232 S. Clifton #275	Wichita	67216
NICHOLS, Joyce A.	648 Kimbro Drive	Baton Rouge, La	70808
OWENS, Rose Marie	1303 S. 119th West	Wichita	67209
PARCEL, Louise	1541 Jeanette	Wichita	67203
PEAVEY, Billie M.	5801 Killdeer Ln.	Viola	67149
PIERCE, Joanna Kay	4480 S. Meridian #241	Wichita	67217
QUEEN, Thelma	352 Floyd	Wichita	67209
SCHAEFER, Jane	1025 Coolidge	Wichita	67203
STAAB, Mary E.	1207 Oakwood Ct.	Derby	67037
STOUT, Bobby	1739 N. Kessler	Wichita	67203
TAYLOR, Sally J.	1317 Reece	Goddard	67052
TREBBE, Leth L.M.	2150 N. Meridian, Apt 2404	Wichita	67203
WEBER, Carolyn	349 N. Brunswick	Wichita	67212
WHITE, Virgil B.	942 Kenwood DR.	Holland, Mich.	49423
WILBUR, Nancy	RR # 3	Valley Center	67147
WILLARD, Barbara B.	1711 Haney,	Hays, Ks.	67601
WISE, Donna	Rt.1 Box 116	Clearwater, Ks	67026
+HETSEL, Loretta	905 West Douglas	Wichita	67213
+McPHERSON, Billy G., Sr.	Rt.2, Box 168-D	Augusta	67010

REVOLUTIONARY WAR MILITARY RECORDS

Rex B. Finley

The following transcript is the information presented by Mr. Finley at the MHGS Classes in August. This should be of help to anyone researching family records and wishing to document an ancestral line to a Revolutionary War Ancestor. We thank Mr. Finley for sharing this with our members.

"How many of you have documented a line to a Revolutionary War Ancestor? For those of you who have not there is always hope. WE are really seeking information about ancestors who served in some way to secure Independence of the colonies from Great Britain. Where should one start looking for the desired information? The first priority should be to determine whether or not the ancestor, widow or child applied for a pension for service in the Revolution. Pension records and files will yield the greatest amount of genealogical information usually. Secondly, did the ancestor or heir apply for a bounty land warrant? Thirdly, does a service record exist for the former serviceman?

Service records will yield much less genealogical information as a rule but usually tell you the unit in which the participant served and something about pay received, whether present for service and when and, if you are lucky, you might find a birth date, but this is improbable.

Where are the Pension files, Bounty Land Record files, and service records to be found? They are in the custody of the National Archives Records Service (NARS) in Washington, D.C. If you want to obtain records from these files by mail, you send in the appropriate application form (NATF Form 26) and the appropriate number of copies of the form and \$5.00 and ask for copies of all of the information in the file. The form should be filled in with all of the information you know about the individual, including name or names under which he or she served, residence locations before and after service and unit or units in which served. File numbers that you have obtained should be included on the application form, also.

An index of Revolutionary War Pension Records has been prepared by the National Genealogical Society and is available here in the Wichita Public Library. There will be references to Bounty Land Warrant applications in this index also. The name of this index is "Index of Revolutionary War Pension Applications" and the Library Call No. is R 973.344 U 583C. This is sometimes called the Hoyt Index. The pension applications will normally contain an application for pension under laws existing at the time with a statement by the applicant of where, when, and in what units he or she served. There may be supporting affidavits of service. In one case information from a family Bible was found naming the entire family. They were listed as "bornt" in each case. If a widow is involved, the marriage date and location will usually be found plus supporting affidavits. Correspondence about the file is frequently found and is helpful. Read preface for explanations.

Suppose that your target ancestor is not found in any NARS pension files, bounty land files, or service record files, there is still hope. Service could have been in a State Militia, or any number of other units. So there are lists and rosters of those who served in

various State Militias. This applies to most if not all of the thirteen colonies. Frequently these are not indexed so it becomes a search for the "needle in the haystack" type of search. Locally at the Wichita Public Library consult the card catalog section of History-Revolutionary War for references to the available books and records. N.H., R.I., Conn., N.Y., Mass., PA., Del., N.J., MD., VA., S.C., N.C., and GA are all represented with book of some sort regarding Revolutionary service from their State in the Wichita Public Library. North Carolina made payments to their military service personnel for which records are available in the North Carolina Archives at Raleigh. Lists of payees have been indexed that refer to where the payment records exists. Payments were made to individuals who furnished provisions and aid to the cause of the Revolution who were not military perse.

There are countless sources of non-governmental information about our Revolutionary military service people. The records that come to mind are the great volumes of information held by the NSDAR(National Society of Daughters of the American Revolution). The first priority for consultation is the DAR Patriot Index. The earliest Patriot Index was published in 1966 and the most recent supplement available in Wichita Public Library, in 1980. Not all patriot ancestors were in the military. In addition to the Patriot Index, there are 166 volumes of lineage books that cover the period 1890 to 1921 of lineage DAR members for that period. There are application papers on file for all of the DAR members in the Registrar General's Office in the DAR in Washington, D.C.. Access to these papers is limited to DAR MEMBERS or prospective members. The National Society of Sons of the American Revolution (NSSAR) has a library in Louisville, Ky.

In addition to all of the above sources of information, you are likely to find information in most any kind of genealogy source such as Society periodicals, burial Records by States (mostly East of the Mississippi River), land records, deed records, 1840 census records, Bible records, possibly church records, newspapers, histories (state county and local), family records photographs, and certainly published genealogies.

As in all genealogy, care must be exercised to be sure the information is correct and is your ancestor. Much confusion will result if erroneous information gets into print. One of my ancestors was a Charles EADS who served from Virginia. Some people have claimed the wrong Charles as their ancestor because information was not carefully checked out. The people who caused this situation was supposed to be professional genealogists in the Washington D.C. area. One of these men named EADS mine) ended up in Wayne County, Ky. The other in Logan County, Ky. Checking the geography of your ancestor is very important.

Another case on one of my ancestral lines has the son of a patriot ancestor married to the wrong woman because someone did not know how to read the information in "Compendium of American Genealogy" by VIRKUS.* Virkus is very unreliable to begin with and is noted for the errors it contains. It makes it doubly bad when misinterrupted when read.

In the process of preparing this presentation, an ancestor has been discovered that should make a thousand or two descendants of Sarah (Butler) BIRD eligible for the NSDAR and/or NSSAR. RBF.

QUAKER MONTHLY MEETINGS IN KANSAS, 1860-1980

KS JEWELL CO.

bounded by	Harmony	1885-1895
N: Nebraska	North Branch M.M. rec.	1875-
E: Republic & Cloud	Oak Creek M.M. rec.	1885-1962
S: Mitchell	Walnut Creek M.M. rec.	1873-1942
W: Smith	Burr Oak Prep only no rec.	1876-1884
	White Rock Prep only no rec.	1877-1887

KS JOHNSON CO.

bounded by	Prairie Center rec.	1894-1959
N: Leavenworth & Wyandotte	Gardner M.M. no rec.	1959-
E: Missouri	(was Prairie Center)	
S: Miami		
W: Douglas		

KS KIOWA CO.

bounded by	Haviland M.M. rec.	1886-
N: Edwards	Liberty M.M. rec.	1885-1886
E: Pratt	Prairie Flower rec.	1900-1935
S: Comanche	Glendale M.M. no rec.	1908-1922
W: Clark & Ford	and	1925-1945
	Maple M.M. no rec.	1925-1965
	Haviland 1/4	

KS LABETTE CO.

bounded by	Friendship M.M. no rec.	1891-
N: Neosho	(Lightning Creek name chgd. to 1891)	
E: Cherokee	Lightning Creek no rec.	1888-1891
S: Oklahoma	Spring River 1/4	
W: Montgomery		

KS LEAVENWORTH CO.

bounded by	Stanwood M.M. rec.	1892-
N: Atchison	Fairview M.M. rec.	1869-1892
E: Missouri	Kans. M.M. rec.	1858-1873
S: Johnson & Douglas	Leavenworth M.M. rec.	1867-1913
W: Douglas & Jefferson	Tonganoxie M.M. rec.	1864-

KS LYONS CO.

bounded by	Cottonwood M.M. rec.	1860-
N: Wabaunsee	Emporia M.M. rec.	1864-
E: Osage & Coffey	Twin Mound rec.	1890-
S: Greenwood	Neosho Prep only no rec.	1863-82
W: Chase & Marion		

KS MEADE CO.

bounded by	Fowler M.M. rec.	1906-
N: Gray & Ford	Plains M.M. no rec.	1966-
E: Clark	West Glendale M.M. no rec.	1911-1966
S: Oklahoma		
W: Seward & Haskell		

Continued from Vol XVIII, no.2

KANSAS QUAKER MONTHLY MEETINGS/Continued

KS MITCHELL CO.

bounded by	Glen Elder M.M.	1879-
N: Jewell Co	Glen View no rec?	1892-
E: Cloud & Ottawa	Fairview no rec.	1900-1907
S: Lincoln	S. Fairview no rec.	1916-1919
W: Osborne	Pleasant Valley	1877-1889
	*1892 joint M.M. So Fairview & Glen Elder	
	Glen Elder 1963	

KS MONTGOMERY CO.

bounded by	Bolton M.M. rec.	1898-
N: Wilson	Elk River M.M. rec.	1871-1919
E: Labette	Farm Ridge M.M. rec.	1881-1919
S: Oklahoma	Harrisonville M.M. rec.	1886-1898
W: Chautauqua & Elk	Independence M.M. rec.	1885-
	Mt. Tabor rec.	1888-1907
	Coffeyville no rec.	1958-
	Farm Ridge rec.	1930-31
	Outpost no rec. and 1930-31	

KS MORRIS CO.

bounded by	Four Mile Prep no rec.	1879-
N: Geary	Spring Creek Prep only no rec.	1880- ?
E: Wabaunsee & Lyon	Council Grove no rec.	1882-88
S: Chase & Marion	Hopewell no rec.	1912-1920
W: Marion & Dickinson		

KS MORTON CO.

bounded by	Rich Plain prep only no rec.	
N: Stanton	Haviland 1/4	1888-1890
E: Stevens		
S: Oklahoma		
W: Colorado		

KS NEOSHO CO.

bounded by	Stark M.M. rec.	1898-
N: Allen		
E: Bourbon & Crawford		
S: Labette		
W: Wilson		

KS OSAGE CO.

bounded by	Barclay M.M. rec.	1874-1935
N: Shawnee		
E: Douglas and Franklin		
S: Coffey		
W: Lyon and Wabaunsee		

KS OSBORN CO.

bounded by	College Hill M.M. rec.	1896-1898
N: Smith	Mt. Ayr M.M. rec.	1875
E: Mitchell & Lincoln		
S: Russell		
W: Rooks		

KANSAS QUAKER MONTHLY MEETINGS/continued

KS PHILLIPS CO.

bounded by Glenwood Prep only no rec. 1880-82
 N: Nebraska Crystal Creek Prep no rec. 1880-87
 E: Smith
 S: Rooks
 W: Norton

KS POTTAWATOMIE CO.

bounded by Belle Ove (Belle View M.M. 1895-1900
 N: Marshall & Nemaha no rec
 E: Jackson & Shawnee membership list
 S: Wabaunsee & Riley
 W: Riley

KS PRATT CO.

bounded by Hopewell M.M. rec. 1889-
 N: Stafford Pleasant Plain rec. 1887-
 E: Reno & Kingman Farmington no rec. 1897-1904
 S: Barber Farrington)
 W: Kiowa & Edwards Pratt M.M. no rec. 1950-
 Haviland 1/4

KS RENO CO.

bounded by Red Mound M.M. rec. 1918-
 N: Rice & McPherson Hutchinson M.M. no rec. 1958-1961
 E: Harvey & Sedgwick
 S: Sedgwick & Kingman
 W: Pratt & Stafford

KS REPUBLIC CO.

bounded by Belleville M.M. rec. 1927- ?
 N: Nebraska Mill Creek M.M. rec. 1874-1948
 E: Washington Union Prep rec. 1879-1884
 S: Cloud
 W: Jewell

KS RICE CO.

bounded by Center Prep rec. 1872-1894
 N: Ellsworth Peace M.M. rec. 1875-1881
 E: McPherson Sterling M.M. rec. 1881-1923
 S: Reno New Hope no rec. -1894
 W: Stafford & Barton disc Mt Ayr 1/4
 Center Prep only no rec. 1879-1905 ?

KS ROOKS CO.

bounded by Chalk Mound M.M. rec. 1879-1962
 N: Phillips Paradise M.M. rec. 1881-1912
 E: Osborne
 S: Ellis
 W: Graham

KS RUSH CO.

bounded by Hargrave M.M. rec. 1905-1949
 N: Ellis La Crosse M.M. rec. 1878-1905
 E: Barton
 S: Pawnee
 W: Ness

Concluded in next Register (no.4)

St. Mark's Lutheran Church
1914 Membership Directory submitted by R. Blackburn

St. Mark's Lutheran Church, 400 S. Fern, Atchison, Kansas
Rev. Howard C. Garvie, Pastor 1914 Membership list:

Ache, Mr. & Mrs. J.F.	1153 Atchison
Ache, Mr. & Mrs. J.S.	1025 Mound
Bache, Mr. & Mrs. Christian	1516 Commercial
Bache, Ellen	"
Bache, Edna	"
Bache, Helga	"
Becker, Etta	West Main
Becker, Dora	"
Becker, Amelia	"
Beckman, Mr. & Mrs. W.A.	Cummings, Ks
Berger, Mr. & Mrs. A.C.	411 N. 9th
Berry, Ella	R.F.D.
Blackburn, Mr. & Mrs. Charles	1307 S. 8th
Blackburn, Mrs. A.G.	908 Green
Blackburn, Lessie	"
Brown, Mr. & Mrs. Carl L.G.	1505 Crowell
Brown, Mrs. Emma	"
Brown, Mrs. Mary	107 Roberts
Bruce, Mr. & Mrs. S.C.	Cummings, Ks
Bruce, Rosa	"
Bruce, Anna	"
Buhman, Mrs. W.M.	1026 Laramie
Burchett, Mr. & Mrs. Thos.	1101 Forest
Bushnell, Mrs. J.L.	810 N. 10th
Burbank, Mr. & Mrs. C.G.	919 N. 11th
Brown, Mrs. Mary	107 Roberts
Brown, W.M.	"
Berry, Mrs. Ida	1015 S. 10th
Bartlett, Mr. & Mrs. N.D.	508 N. 2nd
Carter, Mr. Mrs. A.B.	832 Spring
Case, Mrs. Clara	1329 Crowell
Crouse, Prof. & Mrs. D.W.	711 Green
Cooper, Mrs. Johannah	719 U st.
DeFreeze, Mr. & Mrs. J.S.	921 S. 6th
DeFreeze, Mrs. L.	1303 S. 8th
DeFreeze, Klaas	"
Durrin, Mrs. Lucy	310 R st.
Durrin, Grace	"
Dysinger, Dr. & Mrs. Holmes	938 S. 4th
Dysinger, Mary Ray	"
Dysinger, Cornelia	"
Dysinger, Eloise	"
Dysinger, Frances	"
Dent, Mr. & Mrs. W.T.	1925 Pine
Downer, Mr. & Mrs. J.C.	840 Spring
Dillner, Mr. & Mrs. W.M.	426 R st
Engle, Mrs. Jennie	1207 S. 7th
Easterday, Mr. & Mrs. A.B.	715 Y st
Easterday, Fred	"
Eymann, Mrs. A.D.	609 Riley

Fishwick, Mrs Alice	1108 Atchison
Fishwick, Edna	"
Fishwick, Harry	"
Fortune, Mr. & Mrs. Douglas	718 Spruce
Fortune, Minnie	"
Fortune, Garcia	"
Fortune, Mr. & Mrs. John	505 S. 5th
Fedderson, Mrs. J.	826 S. 7th
Fink, Mrs. E.F.	505 S. 6th
Garvic, Rev. & Mrs. Howard C.	430 S. 5th
Gaston, Mr. & Mrs. E.S.	6th & Kearney
Gaston, Dorothy	"
Gaston, Doloris	6th & Kansas Ave
Gehrum, Mrs. Mary	424 S. 4th
Gehrum, Ida	"
Gibbs, Mrs. Anna	1026 Commercial
Glenn, Mr. & Mrs. John	Council Bluffs IA
Griffin, Mr. & Mrs. W.M.	1525 Commercial
Griswold, Mr. & Mrs. Peter	620 Park
Griswold, Mary	"
Gravelle, Mrs. E.C.	-
Ham, Mr. & Mrs. L.J.	722 S. st
Ham, Laura	"
Hansen, Mr. & Mrs. A.C.G.	712 Y St
Hansen, Clarence	"
Hape, Floyd	St. Joseph, MO
Harris, Mrs. Anna	Falls City, Neb
Harwi, Mrs. E.C.	720 N 4th
Hegy, Carl	RFD
Held, Anna	1317 Main
Heller, Luther	1424 S. 8th
Herndon, Mrs. C.L.	Woodlawn Ave.
Hinkle, Katherine	RFD
Hixon, Dr. & Mrs. C.L.	1009 Kansas Ave.
Hodson, Mrs. Kate	410 R. St.
Hodson, Lena	"
Hodson, Florence	"
Horn, Mr. & Mrs. J.H.	1126 N. 3rd
Harvey, Emma	504 T St
Harvey, Edna	"
Harvey, Fred	"
Jay, Mrs. Ezra	1807 Chestnut
Jackson, Mr. & Mrs. Chas. W.	1025 N. 10th
Jensen, Mr. & Mrs. Martin	911 S. 5th
Johnson, Mr. & Mrs. C.O.	1101 George
Johnson, Mrs. Hanna	918 Atchison
Johnson, Harry O.	"
Johnson, Ester	"
Johnson, Ethel	"
Jones, Wiley	Falls City, Neb.
Jost, Mr. & Mrs. E.C.	308 N. 3rd
Keithline, Mr. & Mrs. Andrew	1121 Santa Fe
Kiehl, Mr. & Mrs. John	909 Henry
King, Mr. & Mrs. H.J.	Kansas City Mo.
Kinsel, W.M.	RFD

KANSAS STATE CENSUS 1885 BUTLER COUNTY

Roll 14 El Dorado Township Vol 28 through 29 James Fisher, Clerk
City of Augusta: August 14, 1885

Page	NAME	AGE	SEX	Pl.BORN	OCCUPATION	CIVIL War
23	MORRIS, Wm. H.	50	M	Ohio	Teamster - Co.H	11 Reg Cav
	Martha	46	F	"	housewife	
	Frank W.	19	M	Mo.		
	Pressly	17	M	"		
	Robert	15	M	"		
	Carrie	9	F	Ks.		
24	BRUCE, Henry	36	M	Mass.	carpenter	
	Lizzie	24	F	Mo.		
	Linda	10	F	Ill.		
	Hattie	13	F	"		
	Forest	2	M	Ks.		
25	HIGGINS, John	53	M	Limerick, Ire.	Laborer	
	ELLEN	53	F	"	"	
	Pat. J.	22	M	Ill.	"	
	Kate	24	F	Ill.		
	Susie	20	F	"		
	James	18	M	"		
54	HIPPLE, E.C.	45	F	Ohio	widow	
	Burt	25	M	"	clerk	
54	HIPPLE, FRANK	23	M	"	clerk	
	Rosa	16	F	"		
	Fred	10	M	Ks.		
	Carl	7	M	Ks.		
55	WRIGHT, Jay	31	M	Ind.	agent for pictures	
	Mary	26	F	Ind.	housewife	
	Larry	7	M	Ind.		
	George	37	M	"		
	OSBORNE, Frederick	24	M	unknown		
	BROWN, Nona	23	M	N.C.	farmer	
56	BENEDICK, P.W.	34	M	Va.	clerk	
	Mollie	26	F	Ky.	housewife	
	Ruth	2	F	"		
57	TAGGART, J.B.	50	M	Ky.	Furniture - MGR	Bat 6
	Rosa	30	F	"		
	James	4	M	Kans.		
	Howard	2	M	Kans.		
	GORDY, Poole ?	55	M	Ky.	carpenter	
58	DICKERSON, J.W.	29	M	Mo	A.T.S.F RR Agent	
	Eva	23	F	Ill.	housewife	
59	ROBERTSON, A.D.	26	M	Ky	Telegraph operator	
	Sara	24	F	Ky		
	Baby	1 mo.	F	Ks.		
60	CHACE, John I.	45	M	Ind.	farmer	Co.B Reg 11 Cav.
	M.A.	38	F	Mo.	housewife	
	Oliver E.	12	M	Ks.		
	Mamie A.	8	F	"		
	Edna	6	F	"		
	John	4	M	"		
61	BALDING, L.W.	32	M	Ind.	Photographer	
	Nettie	23	F	Ill.	housewife	
	Leonard	4	M	Ks.		
	Frank	2	M	"		

Kansas State Census, 1885, Butler County/Continued

Page	NAME	AGE	SEX	BORN	OCCUPATION	Civil War
62	HENRY, James	46	M	Tenn.	Farmer	
	C.A.	45	F	"	Housewife	
	Ella	20	F	"		
	Sally	19	F	"		
	Naomi	16	F	"		
	Lillie	14	F	"		
	Julia	11	M	"		
	Ina	9	F	"		
	Ola	7	F	"		
62	CARR, T.W.	25	M	Tenn	Blacksmith	
	Cordie	22	F	"	Housewife	
62	EMONS, E.A.	45	M	Mo.	Minister	
	S.A.	38	F	Mo.	housewife	
	Lillie M.	12	F	"		
65	LANE, W.A.	62	M	Tenn	Farmer	
	Sarah	56	F	Ill.	housewife	
	George	24	M	Ill.	Merchant	
	Will T.	22	M	"	"	
	Maggie	17	F	Iowa		
	Dell	15	F	"		
65	MORGAN, G.D.	59	M	N.C.	Laborer	
	Margret	59	F	Scotland	housewife	
	Anna	19	F	Ill.		
	Freddie	11	M	"		
	(Muddie)Hildie	85	F	N.C.		
65	MORGAN, WM. A.	35	M	Ill.	Laborer	
	Tillie	28	F	Ill.		
	Irwin	3	M	Ks.		
65	SMITH, Henry	40	M	France	Barber	
	Dora	36	F	Ill.		
	Charles C.	11	M	Kans.		
	George M.	9	M	Kans.		
	Will H.	5	M	"		
	Frank	2	M	"		
	SMITH, W.A.	22	M	?	Barber	
65	PRICHARD, E.O.	30	M	Ind.	Drug clerk	
	Hettie	29	F	Ohio		
	Cora	1	F	Iowa		
	JAMES, F.T.	38	M	Kans.	Laborer	
	Bertie	14	F	Ill.		
	Edward	8	M	Ks.		
	Francis	6	M	"		

JOE REBAR maintains a Surname Registry for those persons seeking Ancestors in NORTHUMBERLAND, BERKS, SCHUYLER AND COLUMBIA COUNTIES IN PENNSYLVANIA. If you want your Surnames Registered "FREE". Send a list but those names Must be connected with the above Counties. If you are researching in those counties and want a list of the name you are looking for; send \$1.00 and SASE. Refund if surname not listed. Write Joe Rebar, 149 E. Dewart St. Shamokin, Pa. 17872-0000

MARRIAGE RECORDS A, GOING SNAKE DISTRICT

The following records were submitted by Mrs. Delores L. Mitts, a member of our Society of Gravette, Arkansas
These are marriages in the Cherokee Nation during 1880s,81,82,83.
White men marrying Cherokee women were required to submit a petition signed by 10 citizens of the Cherokee Nation , attesting to his good Character. These were published in a Siloam Springs Newspaper, August 1983 and are given as they appeared in the records.

ROGERS-GARRETT. . .	JOHN ROGERS, U.S. Citizen married Sally GARRETT, Cherokee	27 March 1880
GHORMLEY-TAYLOR	William Covington GHORMLEY, white man. US.Clerk Elizabeth TAYLOR, Cherokee -- no date--Ghormley came to Cherokee Nation in 1850	
PARRIS-HUMPHREY	Jesse PARRIS, Cherokee -- married. . . Francis HUMPHREY, white woman	5 May 1880
HAMBLIN-WAYHT	John HAMBLIN,34, Cherokee Eliza WAYHT,30, Cherokee	12 July 1880
SIXKILLER-ACHEMY	Taylor Sixkiller, 31, Cherokee ACHEMY ? not legible, 30,	20 Aug. 1880
SNOW - AKIN	W.H. SNOW, 31, Cherokee of Cooweeskowie District Mary Ann AKIN,29, Cherokee (Andrew Taylor Akin,father, was undersheriff 1883)	23 Feb. 1881
HARRALL-FULSOM	J.S. HARRALL, Cherokee Malinda FULSOM, Cherokee	no date
CRITTENDEN-WILKIE	no information given	
GROUNDHOG-RISS (?)	GROUNDHOG,33, Cherokee * * * Jennie RISS (?)25, Cherokee	11 Nov.1881 12 Sept. 1880
DUNCAN	Rev. C.G.DUNCAN mar. Nancy A.DUNCAN,	15 Aug.1881
TALBOT - SMITH	George W. TALBERT (Talbot), white Anna(Annie) C. SMITH, Cherokee (evidently lost or mislaid several years)	14 Aug. 1876
KAISER -STILL	A.J. KAISER, White KATY STILL, Cherokee	7 Oct. 1881 daughter of James(or John) and Susie DOWNING Still
BEE - RATLIFF	J.M. BEE, white Julia RATLIFF, Cherokee	26 Feb. 1882
HARLAN - BRANTLEY	Ellis HARLAN, 20, Cherokee Sarah BRANTLEY, 17, Cherokee	9 May 1882
PARTAIN-DEGUR	H.J. PARTAIN, 32, white Lizzie DEGUR, 32, white	no date
FOREMAN-WILLIAMS	Nelson FOREMAN,22, Cherokee Nannie WILLIAMS, 20, Cherokee	8 Nov. 1882
BELL - WARD	John F. BELL, Cherokee Anna Olive WARD, Cherokee	19 Nov. 1882
CROWEL - GILLIS	W.I. CROWEL, Washington Co. Lillie F. GILLIS	20 June 1882
LETTERWOOD-	G.M. LETTERWOOD, Cherokee	21 Dec. 1883
MANKILLER	Mable MANKILLER, Cherokee	
THOMAS - WOODALL	William THOMAS, Cherokee Eunice WOODALL, Cherokee	1 Jan. 1883
HARLESS - BELL	Arthur J. HARLESS, white Dorie BELL. Cherokee	3 Dec. 1882
CORDRY-PERLONE	Matthew CORDRY, white Alla PERLONE, Cherokee	17 Dec. 1882
ADAIR-ROSS	Samuel H. ADAIR Sarah ROSS	27 Dec. 1882

MARRIAGE RECORDS A, GOING SNAKE DISTRICT CONTINUED/..

NOBLET- BELL	William NOBLET, white	
	Lucinda BELL, Cherokee	9 Jan. 1883
MARLAND - McDONALD	John H. MARLAND, white	
	Sarah Jane McDONALD, Cherokee	5 Feb. 1883
† ALLEN -HARDIN	J.H. ALLEN, white	
	Mary H. HARDIN, white	5 April 1883
PHILLIPS-DONGLOP	Frank PHILLIPS, 26, Cherokee	
	SIONNA (?)DONGLOP, 16, white	12 Oct. 1880
FULLER -STEEL	R.C. FULLER, 23, white	
	? STEEL, 20 Cherokee	15 Sept. 1880
THOMAS- WARD	J.W. THOMAS, white	
	Martha Jane WARD, Cherokee	22 Oct. 1880
HOSEY - WARD	R.A. HOSEY, 24, white	
	Frances WARD, 21, Cherokee	10 April 1881
	above Ward 's were daughters of George WARD	
STEWART - WARD	Rufus S. Stewart, 27, white	
	Barbary WARD, 21, Cherokee	7 Nov. 1880
	(dau. of Thomas & Mary Ward)	
DOHERTY -SWINHART	John DOHERTY, 49, white?	
	Melissa SWINHART (?)30, white	8 Nov. 1880
CRAIG - STILL	George CRAIG, white	
	Anna STILL, Cherokee	15 Jan. 1881
HOLLAND -CRITTENDEN	B.G. HOLLAND, white	
	F.S. Crittenden, Cherokee	23 Jan 1881
McCHESNEY-FLETCHER	James McCHESNEY, 33, white	
	Sally A. FLETCHER, 16, Cherokee	29 July 1882
	daughter of Harrison & Charlotte Fletcher	
KIRK - TADPOLE	Thomas KIRK, 22, white	
	Susie TADPOLE, 17 Cherokee	29 Apr. 1882
WHISENHUNT-KELLY	Wm. T. WHISENHUNT, 25. white	
	Joanna KELLY, Cherokee	4 Nov. 1882
SCOTT- PARRIS	F. H. SCOTT, 21, white	
	BELL PARRIS, 18, Cherokee	28 June 1882
NOBLETT-CRITTENDEN	Charles NOBLETT, white	
	Delilah CRITTENDEN, Cherokee	26 Oct. 1882
MURRY-PIDDING	R.W. MURRY, white	
	Katherine PIDDING, Cherokee	25 Jan 1883
SMITH -KELLY	W.S. SMITH, 20, white	
	Rosanna KELLY, 20 Cherokee	15 July 1883
REDDICK-PARRIS	William REDDICK, 26, white	
	Ellen PARRIS, 16, Cherokee	10 Aug. 1883
MURPHY - KELLY	J.T. MURPHY, white	
	Emma Catherine KELLY, Cherokee	12 Aug. 1883
CORNTAUSLE-COH-TA-YEH	Adam Corntausle, 24, Cherokee	
	COH-TA-YEH, 23, Cherokee	1 JAN. 1883

BEGINNER'S RESEARCH. . If you have questions or are uncertain what to do in your research, check out Volume 15, nos. 2, 3, 4, and no. 1 of Vol. 16 of Midwest HGS Register at our Genealogy Library and read "A Guide for Beginning Genealogists" written by Mrs. Pauline Stewart Massey.

PIONEER PHYSICIANS IN WICHITA AND SEDGWICK COUNTY, KANSAS

Wichita was considered one of the most vigorous, rough and uproarious towns between the Atlantic and Pacific Oceans in 1870. "Everything Goes In Wichita" said a signboard on the edge of town, and it did! Into this rough and ready background came the pioneer doctors.

The first doctor to practice in Wichita was Dr. William Umstillar, who arrived in 1867. He was post surgeon for Company H, Fifth U. S. Infantry under Colonel Samuel L. Barr. The army brought cholera to Wichita and many soldiers and several settlers died from this dreaded disease. The Wichita Indian tribe was hardest hit, including their chief. Cholera seemed to plague the Indians and the mortality rate was high.

It was recommended that the patient go to bed in a warm room, drink hot sage tea and apply warm poultice over the lower part of the stomach. A powder of calomel and opium mixed was advised for treatment. Some doctors used powdered rhubarb. Pure drinking water, isolation and disinfection of clothing was found to be the best preventive. This was not easily put into practice due to the rugged pioneer life and lack of facilities.

The second doctor to come to Wichita was Dr. E. B. Allen who arrived in August 1869 and filed a claim. He moved his family to Wichita a year later and his brother Joe came along and opened a drug store. Dr. Allen was the first coroner in Sedgwick County and he was elected mayor in 1871.

The third doctor was Andrew H. Fabrique in 1869. He was known to friends as "Fab". Since he wasn't very busy his first year, he started a saw mill at Derby (Ks.), then called El Paso, with a Major Barr. They found that cottonwood lumber warped as they did not have time to wait for it to dry. His mill burned in 1872 and as it had not been profitable, he sold his quarter section of timber to Jeremiah Smith in 1874. Wichita was growing, accidents and sickness increased and there was malaria along the Chisholm Trail, so doctoring was in demand.

The fourth doctor to arrive was Dr. Henry Owens in the spring of 1871. Newspaper ad stated: "Eclectic Physician and Surgeon - Office 3rd and East Main Street - East room of Clark's Feed and Seed Store". Drs. Allen and Fabrique offices were in J. P. Allen's Drugstore.

Dr. W. H. Oatley built a residence at 304 N. Main in 1871. Later the Occidental (Baltimore) Hotel was built here. Frostbite was common during those days and sometimes necessitated amputation of fingers, feet or toes. Dr. Oatley was called in often for these cases.

Other physicians locating in Wichita in the early 1870's were Dr. E. D. Hilliard, located at Lawrence (Broadway) and Douglas. Dr. Charles F. Furley from San Francisco - a "ship doctor". Victor Murdock (newspaperman) said, "Dr. Furley was an unusual man. He had reserve that could be as arctic as the pole and a temper as torrid as the tropics." T. S. Floyd, M.D., Sedgwick, Ks.; Dr. R. B. Greenlee, Southern Hotel; W. T. Hendrickson, M.D. at the Empire House; Dr. C. E. Fisher, a homeopath; Dr. A. J. Longdorth, surgeon; Dr. A. P. Medlam, believed to be an anesthetist; Dr. A. J. Goggins (1872); Dr. C. E. McAdams (1873); Also Dr. Wm. Gray and wife, Dr. L. M. Gray opened an office on the east side of Main Street between First and Second Streets. They didn't do too well and moved to St. Louis where Dr. Wm. Gray became a partner in the Pullman Company and gave up medicine. In 1876 Dr. T. H. Shan-non advertised offices at 44 Main Street. There were probably more physicians per capita in Wichita at this time than anywhere else in the country. It was a restless time. Men came and went; "some were good, some were bad". Most were Civil War Veterans and the chief requirement was a beard.

Other physicians listed in the City Directory in 1878 were: H. W. Black; Henry Croskey; D. M. Losee (?); T. A. McKinney; E. B. Rentz; Samuel Whiteham; John Zenner.

In 1879, Dr. Nannie Stephens, second woman doctor, specialized in treatment of women and "the poor".

Dr. Gunn's "doctor book" and Dr. Miles Almanac were used extensively for answer to all medical problems. People in the country found it difficult to get medical aid so depended on these books.

To simplify their practice, many physicians used patent medicine, such as: Dr. Parker's Ginger Tonic; Dr. Sconville's Blood and Liver Syrup; Johnson's Anodyne Liniment (to prevent diphtheria, cholera etc.); Hood's Sarsaparilla (good for lung troubles); Magic Ointment for Rheumatism; Bucklin's Arnica Salve (cuts and sores); Dr. Warner's Specific (good for nervous disorders, headaches, overuse of tobacco and liquor); Dr. Watkin's Liniment was a cure-all for everything; Harlem Oil for kidneys. Most of them were 50% alcohol and seemed to produce the desired effect.

Wichita boasted 2000 residents in early 1880's. "Homeopathic" physicians were Frederick W. Whitlock, born in Hanover, Germany on November 8, 1823. He practiced 1880 - 1906. He had two sons, Edward, born 1854 and Albert, born 1856 in Farmington, Iowa who worked with their father. Dr. Wm. A. Minnick, born 1854, Montpelier, Indiana and Dr. J. M. Minnick (not related) born Union City, Ohio and W. W. Minnick, his son. Dr. J. E. Oldham came to Wichita in 1883 from Charleston, Indiana and was a popular family doctor. In 1886 Dr. J. E. Bennett opened office.

To be continued next issue.....

REFLECTIONS ON THE SUBJECT OF AGING by Bruce Bliven

In our 80's, Rosie and I live by the rules of the elderly. If the toothbrush is wet, you have cleaned your teeth. If the bedside radio is warm in the morning, you left it on all night. If you are wearing one brown and one black shoe, quite possibly you have a like pair in the closet.

Rosie has aged some in the past year and now seems like a woman entering her forties. She deplores with me the miscreant who regularly enters our house in the middle of the night and squeezes the tooth-paste tube in the middle and departs. As for me, I am as bright as can be expected, remembering the friend who told me years ago "If your I.Q. ever breaks 100, sell!"

Like most elderly people, we spend happy hours in front of the TV set. We rarely turn it on, of course. I walk with a slight straddle hoping people will think I just got off a horse. I considered carrying a riding crop but gave it up..too ostentatious. I stagger when I walk and small boys follow me, making bets on which way I'll go next. This upsets me ; children shouldn't gamble.

On my daily excursions, I greet everyone punctiliously, including the headrests in parked empty cars. Dignified friends seem surprised when I greet them with a breezy "Hi!" They don't realize I haven't enough breath for some huge two-syllable word of greeting.

When we are old, the young are kinder to us, and we are kinder to each other. There is a sunset glow that eradiates our faces and is reflected on the faces of those around us. But it is still sunset!

THE OWSLEY FAMILY held their fifth annual meeting in Richmond, Virginia, 13 May, 1983. Elected Officers include, Carl J.Owsley, President; Mrs. Wm. H. Martin, Seattle, Secretary and Membership Chairman is Albert W.L. Moore, 1420 N. Spring, Independence, Mo.

64050

EARLY WICHITA, GREASERS AND COWBOYS

One of the many interesting early-Wichita stories from Craig Miner's Wichita concerns the "greasers," or buffalo hunters. William Ross and G.M. Weeks, early arrivals in Wichita, found several note-worthy aspects of frontier life, including the architectural style of the Episcopal Church in 1869 to 1870. What follows is a description of several newcomers' amazed reactions to the "greasers" and cowboys.

Weeks "was slightly uneasy about the 'greasers' and cowboys he met on the streets. Of the latter he said: 'They did not interfere with our business, and as we did not interfere with what they called their rights, they let us alone.' Weeks attended the Fourth of July buffalo barbecue with Ross and watched a dance given by a large number of Arapaho and Sioux Indians near his lumberyard.

"Perhaps it was the 'greasers' that dampered Weeks' enthusiasm, and maybe it was the fact that most of the buffalo meat at the barbecue was spoiled and had to be heaved into the river. At any rate he shortly tired of the frontier, sold his lots for one hundred dollars apiece, and returned east.

"Another traveler, George Anderson, came a year later, in May 1871. He found more city but an atmosphere at least as much centered on 'greasers' and their hunting and trapping paraphernalia as on cowboys trailing herds north. Anderson had been on a buffalo hunt, but even so was overwhelmed by the smell coming from fresh buffalo hides laid out along Wichita streets, which provided a playground for bluebottle flies.

"The morals of the town smelled too. It might have been hard to get a drink on the Sabbath, but all the businesses were open and catered to 'the hardest set of men.' Typical accoutrements were 'a huge bowie knife; a brace of Navy revolvers; large spurs with bells tingling from their heavy cavalry boots; rawhide breeches with the hair on.' By 1871 fifteen thousand to twenty thousand head of cattle a week passed through Wichita on their way to the railroad towns, bringing the cowboys, who, Anderson recorded, 'were swearing, drinking, and doing as much as they please.' Three-fourths of the business houses kept whiskey to sell, and the tone of the town was not all improved, in Anderson's estimation, by its sole newspaper, the Vi-dette, 'the morality of which is rather questionable.'"

Human nature being what it is, environmental and moral pollution was as much a concern in the 1870's as it is in 1983. Plus ça change, plus c'est la même, even in the "good old days."

Laurie Schunk

HOW I BEGAN.....

I find it interesting in talking with genealogists, the various incidents that "trigger" their interest in tracing the history of their ancestors. The following story and search by a great-granddaughter started from an article in the "Portrait and Biographical Album of Sedgwick County, Kansas concerning her ancestor who was an early day settler in Sedgwick County. " Starting with the Summers line, I have been able to join the DAR and the DAC."

"When I moved back to Wichita, I bought a condo just one mile from the farm my Great-Grandparents purchased and lived. The farm was located at Rock Road and 21st street-southwest corner, the land is now occupied by apartment dwellers, home owners, condo owners and commercial buildings." Velma Jansen Winsby

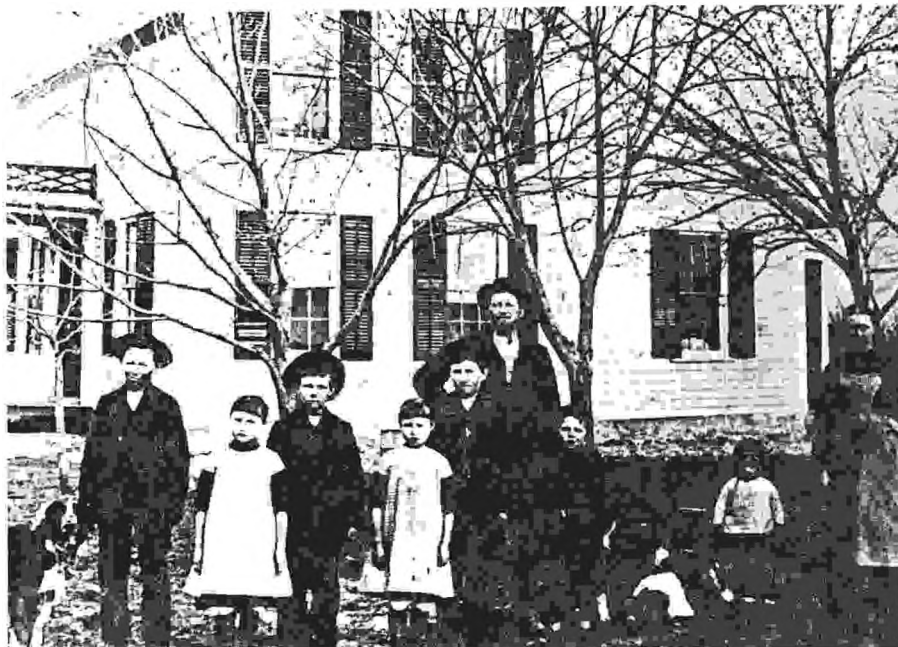
Continued on following page...

SIDNEY SUMMERS, EARLY SEDGWICK COUNTY SETTLER

SUMMERS, HARPSTRITE

JANSEN, WINSBY

Stone from Scotland
Highland Cemetery



Summers new house built 1875



Sidney C. SUMMERS came to Sedgwick County, Kansas in October, 1874 and purchased 160 acres of land in Minneha Township in the eastern part of the County for \$4.35 per acre. He pursued farming most of his life and included stockraising in this enterprise, dealing in horses and hogs, mostly. He was diligent and thrifty and had one of the most desirable homesteads in the area.

Mr. Summers was born 4 February, 1844, son of Hiram and Nancy Summers. He was a native of Iredell County, North Carolina as were his parents. He was reared on a farm and left North Carolina at the close of the Civil War for Illinois and eleven years later migrated to Kansas.

At the outbreak of the Civil War, Sidney enlisted in a North Carolina regiment, and then served in the navy at Charleston for eighteen months. He was present at Fort Sumpter and was taken prisoner by the troops of General Sherman, and sent to New York, where he was a prisoner for 3 months; released at the close of the War.

After the close of the war, Mr. Summers took up residence in Henry County, Illinois. He married Miss Jennie Young, who was born in Scotland, 27 September 1865. They lived in Ogle County, Ill. for a time, then Princeton and later Henry County.

They were the parents of nine children: Mary Nancy, born 16 Aug. 1866; William Harrison, born 19 March, 1869; James Franklin, 22 August, 1871; John Clingman, 1 May, 1874; twins, Maggie C.-Alice J., 8 March, 1877; Hiram, 11 March, 1878; Annie, 18 Dec., 1881; Mabel Grace, 13 Dec. 1885; Bertie, 4 Nov. 1880, died 1881.

Sidney and Jennie Young Summers are buried in Highland Cemetery. The stone on their grave was brought from Scotland as Jennie's father, James Young, was a stone mason in Scotland before coming to the United States. Jennie died young and her father was living at time of her death. James and Ann Kewans Young are buried in Geneseo, Illinois.

Contributed by Velma M. Winsby, Wichita, Ks.

BOOK REVIEWS

THE GILLISPIE FAMILY TREE with RELATED FAMILIES by Opal GILLISPIE Sutherland

Mrs. Sutherland has spent 7 years gathering and documenting her family history. Much thought and planning has gone into the compiling of this interesting and attractive book.

There are 10 pages of introductory information with the Preface including the background history of the Gillispies with many different spellings of the name, etc.

There is a Table of Illustrations which include photo-copies of records, portraits, photos of family members and more.

Table of Contents...the book is divided into 3 parts:

1. The Gillespie family 1730-1983
2. Related Families and
3. General Index.

Related families included are Boggs, Cornelison, Gentry, Hudson, Smither, Terrill and White.

This book has been donated to Midwest Historical & Genealogical Library. Anyone interested in purchasing a copy; please, contact MRS. OPAL GILLISPIE SUTHERLAND, 2045 Lulu, Wichita, Ks. 67211.

THE HILLS FAMILY JOURNAL, Vol 1 No. 1, January 1983

The first issue of the Hills Family Journal is an effort to share with others information about the many branches of the Hills Family in America. The purpose of the quarterly is to publish documented information with source material to encourage further research by family members. Interested persons are invited to send in Hills family charts, etc. Other surnames included in this issue are Grover, Kennison, Lincoln, Mullen, Wheat and others.

The earliest known member of the family is Hiram Hills b. 1804 in Vermont. Charts, land grants, marriage records, photos, Civil War service records and general information of Hills family are to be found in this 25 page journal.

The president of this Association is Lee Hill of Miami, Florida, Editorial Chairman Emeritus of Knight-Ridder Newspapers, Inc.

Annual Membership fee which includes the Journal, 4 issues, \$5.00

Sustaining Membership, any amount over \$5.00. write the Editor,

Mrs. Beverlee Margolis, 9015 S.E. 37th St., Mercer Island, Wa. 98040

CLAUDETTE'S OF BLOOMINGTON, MINNESOTA is publisher of several family publications, two of which have been donated to MHGS Library and may be read there.

WOODSON WATCHER PLUS ALLIED LINES. . . This 40 page issue contains records of Woodson Families in Georgia, Missouri, Kentucky, Virginia and South Carolina (Union County). Four-way descent from Dr. John and Sarah (Winston) Woodson (12 pages) includes many names, dates and places. Introduces James Lineage and Woodson descent of Frank and Jesse James. Lineages, Queries, Query responses, etc. A lot of information for those researching this family. Published 3 times a year. Subscription \$12.00 per year begin. November

No. 2 WRIGHT FAMILY WORK BOOK Vol 1 no. 1. This is preview of 1984 Jan. issue. Contents: Maryland Revolutionary War Records of Wrights (pensioners and Bounty Land records)

BOOK REVIEWS...WRIGHT/continued

Census records of Iowa, Dallas County. Green County marriages of Petty, Wright, Riley and related families
Kansas, Reno Co. census 1880; Ohio, Montgomery Co, Preble Co. 1860-70. Ohio, 1850 census and cemetery records; Texas Cemetery records, Aaron Wright family Bible; misc. worksheets; queries-WrightHelp Wanted 42 pages; Subscription \$10.00 yearly, Jan. May & August.
Write to: Claudette Maerz, P.O. box 37010, Bloomington, Minn. 55431

GENEALOGICAL RESEARCH DIRECTORY (/For Worldwide Family History Research) Published by the Library of Australian History; edited by Keith A. Johnson and Malcolm R. Sainty
This is their fourth Directory . It has 243 pages and of the 2089 contributors the majority are new. There are over 150 residents of the United States and Canada in this directory. Listed are family names, dates and Country from whence they originated and names and addresses of researchers.
Most important feature of the Directory is the Country of origin of the names being researched. "This is an efficient, inexpensive and effective means of bringing family historians into contact with distant relatives researching the same families."
Subscription fees for the United States is \$12.00 which includes up to 15 of your entries published in the Directory and one Book mailed to you. In addition to 15 Surnames you may send additional names for 40¢ per name. One entry per line. An entry Form is included with this book. Societies can order forms for 5¢ each or make a photo copy of same. Entries must be submitted before Feb.20 1984(Directories will be distributed in June, 1984) Contact U.S. Agent: Mrs. L. Kivitt, 2707 West Clark Ave., Burbank, Ca. 91505

A copy of this Directory is available in our Library.

NATURALIZATION AND/OR CITIZENSHIP

A two court system exists in every state. You find naturalization actions in both courts. One is the State--or County Court, and the other is the Federal --or United States District Court.

Naturalization actions are not titled the same. You may find them referred to as "Citizenship Papers"--"Second Papers," "Naturalization Proceedings", "First Papers" "Second Papers" sometimes "Aliens' Certificates". They are not all the same thing but Clerks and people researching for them refer to them by these titles.

In Kansas State Courts the clerks of the County District Courts usually still have the records. The earliest state records are hand written: there is an index . It will help when researching the older books if you have patience and unlimited time.
Topeka Genealogical Society Quarterly Vol.13 # 1 pg 5 from program given TGS meeting by Mrs. Juanita Dice, Topeka.

TWENTIETH REGIMENT, KANSAS VOLUNTEER INFANTRY, SPANISH-PHILIPPINE

WAR 1898-1899

FIELD & STAFF

NAME & RANK	RESIDENCE	ENROLLMENT	MUSTER IN
-------------	-----------	------------	-----------

Continued from Vol.XVIII no.1

Orville S. Taylor Sgt.	Topeka	April 29, 1898	May 9, 1898
BELLAMY, FRANK E. pri.	Cherryvale	May 3	May 12
BARTON, Samuel F. pri.	Wellington	Jun. 14	June 14
BERRY, Bert S.	Garnett	May 12,	May 12
BOURKE, Walter V.		June 14	June 14
BIRLEW, Orlin L.	Fredonia	May 3,	May 12
CANFIELD, Ollie A.		June 14	June 14
COE, CLARE	Topeka	May 13	
COPEN, Albert B.	Pittsburg	Apr. 29	May 11
COUCHMAN, Benjamin	Wichita	May 13,	May 13
DREYER, Carl H.	Topeka	May 12	May 12
ELLISON, Arthur E.	Topeka	" "	" "
FLEMING, Cortland	Mound City	May 3	May 10
GOSSETT, Frank	Paola	June 14	June 14
GRANTHAM, James W.	Girard	" "	" "
HAYNES, Roy A.	Leavenworth	April 29	May 9
HELM, Wilfred B.	Mound City	June 15	June 15
HELMAN, Claude H.	Paola	June 14	June 14
HEMMON, Sidney A.		May 2	May 10
LUCAS, Elmer C.	Ottawa	May 3	" "
HUNGERFORD, Wm. E.	Topeka	May 13	" 13
BUTLER, Elmer	Devon	Apr. 30	" 12
BOAZ, Volney T.	Girard	June 14	June 14
BUCHANAN, John A.	Topeka	" 13	" 13
BARSHFIELD, Charles P. (Chief Trumpeter)	Kansas City	Apr. 27	May 8

BAND: Regiment mustered out Oct. 28, 1899

GRIMLEY, Charles E.	Topeka	May 12	May 12
STRICKLAND, Erve C.	Topeka	June 7	June 7
HILLIKER, Lynn L.	LAWRENCE	Apr. 29	May 9
MAFFEY, Wm. T.		June 21	June 21
LIEURANCE, Edward	Neoaho Falls	May 2	May 10
MINER, John W.	Ness City	June 14	June 14
McINTOSH, Owen L.	Topeka	April 29	May 9

TWENTIETH REGIMENT, KANS. VOLUNTEER INF., SPANISH-PHILIPPINE WAR				
NAME & RANK	Residence	Date of Enrollment		DATE Mustered In
PARKS, William G.	Cherryvale	May 3,	1898	May 12 1898
ROTHMEYER, ED. A.	Topeka	Apr. 29	"	May 9 "
REASONER, Chas. H.	Reserve	June 13	"	Jun 13 "
STAMM, Albert	Pittsburg	Apr. 29,	"	May 11 "
WASSBERG, John	Oakland	June 7,	"	June 7 "
COMPANY A				
CAPTAIN:				
TOWERS, John E	Topeka	Apr. 29	"	May 9 "
SCOTT, Howard A.	Independence	May 3	"	Feb. 12 1899
GLASGOW, Edward L.	Salina	May 2	"	Mar 4 "
HAMILTON, Clad	Topeka	May 16	"	Aug. 19 "
First Lieutenant				
FRANK, Frank J.	Manhattan	Apr. 29	"	May 9 1898
Sec. Lieut.				
HUDDLESTON, Everett R.	Topeka	" "	"	" " "
DEEMING, John J.	"	" "	"	Jly 22 1899
FIRST SARGEANT				
MORRIS, Joseph W.	"	" "	"	May 9 1898
WOOLWORTH, Chas. A.	"	" "	"	" " "
QUARTERMASTER SERG.				
TAYLOR, Orville S.	"	" "	"	" " "
BAILEY, Emory A	"	" "	"	" " "
SERGEANT				
HEWITT, Daniel S.	"	" "	"	" " "
KERSHNER, James W.	"	" "	"	" " "
HASKINS, Butler J.	"	" "	"	" " "
RECOB, Fred A.	"	" "	"	" " "
JONES, Harry	"	" "	"	" " "
WHITE, Samuel J.	"	June 13	"	JUNE "
MAXWELL, ROBERT D.	"	Apr. 29	"	May 9 "
WISNER, Irenaeus	"	" "	"	" " "
SEGRAVES, Joseph M.	"	" "	"	" " "
PRIBBLE, Francis M.	"	" "	"	" " "
COLE, Chase	Winchester	" "	"	" " "
CORPORAL				
SPENDLOVE, Joseph C.	Topeka	" "	"	" " "
ROUNER, Charles D.	"	" "	"	" " "
RAMSEY, Charles	"	" "	"	" " "
SHARON, Clarence	"	" "	"	" " "
HAISCH, John J.	"	" "	"	" " "
LAMONT, Milo L.	"	" "	"	" " "
MONTGOMERY, Terence	"	" "	"	" " "
JOHNSTON, John J.	"	" "	"	" " "
WATERS, Charles A.	"	" "	"	" " "
JOHNSTONE, Jerome E.	Wamego	Jun 13 1898		June 13 1898
SEGRAVES, Joseph H.	Topeka	Apr. 29 1898		May 9 1898
KIRBY, Steve S.	"	" "	"	" " "
FRENCH, Walter E.	"	" "	"	" " "
BARRETT, Edwin	"	" "	"	" " "
DAVID, Ellis G.	"	" "	"	" " "
LEWIS, George W.	"	" "	"	" " "
MULLER, Charles	San Francisco, Ca.	June 6	"	June 6 "
REDINGER, Joseph H.	Topeka	June 13	"	June 13 "
McCOOL, Percy (Perry)	"	Apr. 29 1898		May 9 "
COTTON, Albert R.	"	June 13	"	June 13 "

TWENTIETH REGIMENT, KANSAS VOLUNTEER INF. SPANISH-PHILIPPINE WAR

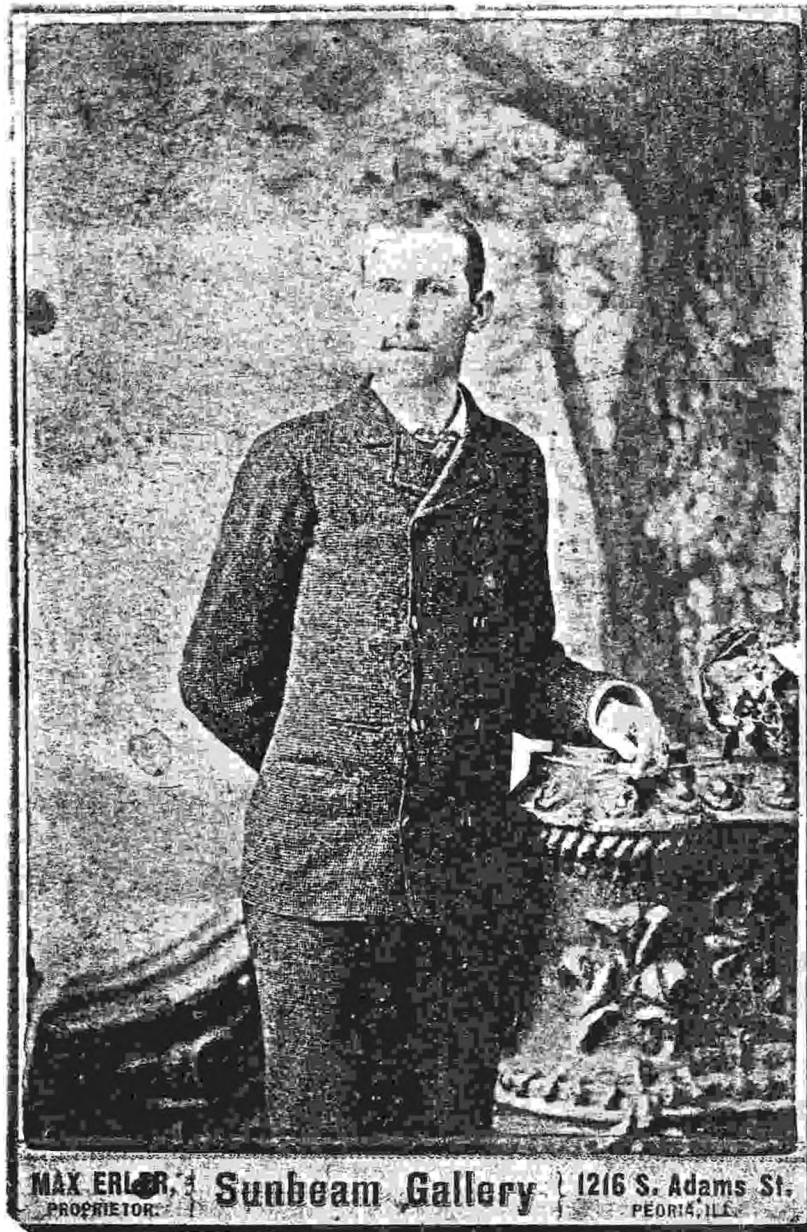
NAME & RANK	RESIDENCE	DATE OF ENROLLMENT	MUSTER IN
SHEARD, Edwin W.	Topeka	June 13 1898	June 13 1898
SWARTZ, Walter C.	"	" " "	" " "
PINKERTON, Edward L.	"	" " "	" " "
MUSICIAN			
BARRETT, Edwin	"	Apr. 29 "	May 9 "
SPITTS, Frank L.	San Juan, Ca.	Jly. 6 "	Jly. 6 "
ARTIFICER			
ARNOLD, Tunis	Louisville	Apr. 19 "	May 9 "
COOK			
FLECKINGER, WM.	Superior, Neb.	Nov. 2 "	NOV. 2 "
WAGONER			
BUNDY, Mitchell	Topeka	Apr. 29 "	May 9 "
WAGNER, Harry B.	"	" " "	" " "
PRIVATE			
ADAMS, Harry J.	"	" " "	" " "
ARNOLD, Walter J.	Wamego	" " "	" " "
ANDERSON, Chas. E.	"	" " "	" " "
AYERS, William F.	Topeka	June 13 "	June 13 "

PRIVATES:

NAME	RESIDENCE	NAME	RESIDENCE
BANKS, Edward E.	Topeka	LEWIS, George W.	Topeka
BEAGHEN, Frank J.	"	McDowell, Clarence	"
BRENNAN, Edward H.	"	McFADDEM, Frank M.	"
BANKS, Harry H.	Seabrook	McKINNEY, Isaac K.	"
BLAIR, Etcyl P.	Topeka	McKINNEY, Henry D.	"
BOYD, John R.	"	MILLER, Herbert T.	"
CHANDLER, Harvey	"	MYERS, Edwin A.	"
COLEMAN, Walter J.	"	MARSH, Clark W.	"
COLEMAN, James C.	"	MANAHAN, Reseil	"
COLE, Chase	Winchester	MORRIS, Joseph W.	"
COTTON, ALBERT R.	Topeka	McCoole, Percy?	"
DAVIS, Ellis G.	"	MONTGOMERY, TERENCE	"
FISH, Charles R.	Wamego	MULLER, Charles	San Francisco
FRANCIS, Frank	Conway Springs	PETERS, Charles	TOPEKA
FOX, Fred	Topeka	PAYNE, Ira M.	"
FRENCH, Walter E	"	PRIBBLE, Francis M.	"
GRAFT, Fred	"	PINKERTON, Ed. L.	"
GARRETTSON, Wm. L.	"	REASONER, Chas. H.	Reserve
HUMBERT, John J.	"	RATHEMEYER, Ed. A.	Topeka
HUMPHRIES, Fred	"	RECOB, Fred A	"
HASKINS, Butler J.	"	REDINGER, Jos. H	"
HELWIG, George H."	"	RAMSEY, Charles	"
HEWITT, Daniel S.	"	STEPHENS, John A.	"
HETRICK, Charles	"	SMITH, Marcus, J.P.	"
JOHNSTONE, Jerome	Wamego	SMITH, Wm. R.	Minneapolis
JENNINGS, Lester C.	Topeka	SHERBURNE, Walter L.	Topeka
JOHNSTON, John J.	"	SLATER, Raymond	"
KIRK, Earnest E.	"	SPENDLOVE, Jos. C.	"
KIRBY, Steve S.	"	SNAPP, Arthur W.	"
LAWS, Lewis G.	"	SUTTON, Theodore H.	"
LEAHY, James D.	"	SHAUFLE, Fred	"
LONG, Arthur W.	"	SMITH, Frank A.	"
LAWRENCE, Thomas E.	"	STEWART, Frank	"
LEMLEY, George W.	"		

TO be Concluded next issue.

who am i ?



WHO AM I
BERENDS INMENS RONNINGEN PHOTO ALBUM
ROBERT RONNINGEN
ROUTE ONE BOX 86
Sedgwick, Kansas 67135
316 75 5-1923

ANCESTOR CHART: Douglas M. KOEPEKE, 618 Edgewood, Mulvane, Ks.

1. KOEPEKE, Douglas M. b. 5 Oct. 1924, Junction City, Kansas; m. 2 June 1946, Eldorado, Kansas, Alice Berniece BROGDON.
2. KOEPEKE, Walter Frederick b. 5 Dec. 1887, Junction City, Kansas; m. 28 Aug. 1919, Antonito, Colorado; d. 18 July 1969, Junction City, Kansas.
3. READ, Bertha Lucile b. 27 Jan 1900, Topeka, Kansas.
4. KOEPEKE, Johannas b. 20 Dec. 1841; m. 1870; d. 15 Feb. 1902, Junction City, Kansas.
5. BREDOW, Wilhelmine b. 17 June 1847, Löllhofel, Pomorania, Germany; d. 21 Apr. 1930, Junction City, Kansas.
6. READ, John Melvin b. 23 July 1877, Watson, Kansas; m. 10 Feb. 1897, Topeka, Kansas; d. 1 Nov. 1955, Long Beach, Calif.
7. ENGLAND, Effie Sarah b. 16 Sept. 1877, Shawnee Co., Kansas; d. 12 Nov. 1937, Long Beach, California.
8. KOEPEKE, ?
9. ? , Dora b. 2 Dec. 1810; d. 16 Aug. 1900.
10. BREDOW, John Christian Frederick b. 25 June 1815, Löllhofel, Pomorania, Germany; d. 10 Dec. 1884, Junction City, Kansas.
11. LEISTEKOW, Wilhelmine b. 3 May 1815, Klein Rischow, Pomorania, Germany.
12. READ, Alexander Campbell b. 14 Jan. 1846, Washington, Ohio; m. 8 Oct. 1872; d. 2 May 1934, Topeka, Kansas.
13. MANN, Araminta b. 1 Dec. 1851; d. 8 Apr. 1928, Topeka, Kansas.
14. ENGLAND, Emory b. 13 Dec. 1844; m. 1 Jan. 1869, Alliance, Ohio; d. May 1911.
15. BROSIUS, Martha b. 22 Feb. 1847, Green Village, Ohio; d. 10 Oct. 1913, Topeka, Kansas.

ANCESTOR CHART: Denise (Shrack) SAWYER, 2825 Williamsburg Dr.
LaPlace, LA. 70068

1. SHRACK, Denise Colleen b. 8 Mar. 1953, Muncie, Delaware, Indiana; m. 14 Oct. 1972, W Lafayette, Tippecanoe Co., Indiana, Duane Leon SAWYER.
2. SHRACK, Harvey Michael b. 19 Nov. 1931, Redkey, Jay Co., Indiana; m. 3 Aug. 1951.
3. METTLER, Norma Jean b. 9 Apr. 1933, Dunkirk, Jay Co., Indiana.
4. SHRACK, William Harvey b. 25 May 1908, Blackford Co., Indiana; m. 15 Sept. 1928; d. Nov. 1982, Jay Co. Indiana.
5. MICHAEL, Ruth b. 15 Sept. 1909, Delaware, Indiana.
6. METTLER, Raiford Lawrence b. 4 Feb. 1903, Blackford Co., Indiana; m. 31 May 1924; d. 6 Jan. 1972, Portland, Jay Co., Indiana.
7. BOGIR, Nellie b. 24 June 1902, Lapel, Madieson Co., Indiana.
8. SHRACK, Harvey Lee b. 7 Aug. 1885 Millgrove, Blackford Co., Indiana; m. 22 Dec. 1906; d. 22 Dec. 1912, Millgrove, Indiana.
9. LUZADDER, Mary Alta b. 18 June 1884, Millgrove, Indiana; d. 9 Oct. 1962, Delaware, Indiana.
10. MICHAEL, Simon Marion b. 22 Apr. 1870, Delaware Co., Indiana; m. 13 June 1891; d. 19 Feb. 1917, Delaware Co., Indiana.
11. MAITLEN, Emma Bell b. 24 Feb. 1871, Delaware Co., Indiana; d. 18 Mar. 1926, Delaware Co., Indiana.
12. METTLER, Dorris Wilson b. 30 Nov. 1876, Wabash, Indiana; m. 4 Nov. 1899; d. 3 Aug. 1931, Jay Co., Indiana.
13. FISHBACK, Anna Caroline b. 24 Jan. 1881, Blackford Co., Indiana; d. 30 Oct. 1950, Redkey, Jay Co., Indiana.

Ancestor Chart - Denise (Shrack) Sawyer / Continued

14. BOGIR, William Henry b. 27 Apr. 1857, Greenville, Darke Co., Ohio; m. 18 Dec. 1883; d. 13 Sept. 1916, Dunkirk, Blackford Co., Indiana.
15. WHIPPLE, Clarissa Peninnah b. 19 Apr. 1866, Randolph Co., Indiana; d. 4 July 1914, Blackford Co., Indiana.

ANCESTOR CHART: John Frederick Schunk II

1. SCHUNK, John Frederick, II b. 18 Oct. 1942, Peoria, Illinois; m. 29 Aug. 1964, Peoria, Illinois, Laurel Beth LOWDER.
2. SCHUNK, John Frederick b. 9 June 1914, Farmington, Illinois; m. 17 October 1937, Peoria, Illinois.
3. WHITEKER, Martha Elizabeth b. 9 Apr. 1914, Cynthiana, Ky.; d. 11 Aug. 1978, Peoria, Illinois.
4. SCHUNK, Leo Julius b. 22 Aug. 1885, Morton, Illinois; m. 13 Dec. 1906; d. 23 Aug. 1948 Peoria, Illinois.
5. BUTLER, Myrtle Margaret b. 22 May 1885, Farmington, Illinois; d. 11 Jan 1940, Peoria, Illinois.
6. WHITEKER, Noah Estill b. 28 Sept. 1882, Pendleton Co., Ky.; m. 4 Aug. 1904, Cynthiana, Ky.; d. 13 Apr. 1926, Peoria, Ill.
7. KEARNS, Zena Belle b. 27 Apr. 1884, Harrison Co., Ky.; d. 23 Aug. 1949, Peoria, Illinois.
8. SCHUNK, John b. 16 Feb. 1851, Webenheim, Germany; m. 31 Mar. 1881, Tazewell Co., Illinois; d. 26 Aug. 1907, W. Des Moines, Ia.
9. ZIMMERMAN, Christina b. 30 May 1860, Collinsville, Ohio; d. 5 Aug. 1888, Morton, Illinois.
10. BUTLER, Frederick Alfred b. 9 Jan. 1850, Farmington, Illinois; m. 31 Dec. 1874, Farmington, Illinois; d. 22 Nov. 1936, Farmington, Illinois.
11. BUTLER, Letitia b. 3 Aug. 1856, Allegheny Co., Pennsylvania; d. 3 Oct. 1938, Farmington, Illinois.
12. WHITEKER, Richard A. b. 18 Sept. 1854, Harrison Co., Ky.; m. 13 May 1879, Pendleton Co., Ky.; d. after 1900, Harrison Co., Kentucky.
13. WRIGHT, Sarah W. b. 14 July 1861, Pendleton Co., Ky.; d. 1882-1887, Pendleton Co., Ky.
14. KEARNS, James Monroe b. 15 June 1857, Harrison Co., Ky.; m. 23 Dec. 1880, Harrison Co.; d. 31 Aug 1929, Harrison Co., Ky.
15. WHEELER, Sarah Elizabeth b. 25 Nov. 1856, Harrison Co., Ky.; d. 26 Mar. 1933, Harrison Co., Ky.
16. SCHUNK, Christian
17. BENDER, Sophia
18. ZIMMERMAN, Christian
19. KINSINGER, Barbara
20. BUTLER, Abel
21. LOOMIS, Eliza Marie
22. BUTLER, Peter
23. WHITE, Sarah Jane
24. WHITEKER, Archibald A.
25. PADGETT, Sarah E.
26. WRIGHT, Lewis Pemberton
27. WHITEKER (MILES), Mary Annis
28. KEARNS, Thomas
29. FOOKS, Eliza Jane
30. WHEELER, William F.
31. EGNEW, Mary Frances

ANCESTOR CHART: James BAILEY, 1634 Windsor, Wichita, Ks.

1. BAILEY, James b. 11 Oct. 1913, Osage, Iowa; m. 1 Aug. 1943, Dodge City, Kansas, Margaret Alice VAILE.
2. BAILEY, Judson Dwight b. 12 Mar 1873, Osage, Iowa; m. 11 Sept. 1895, Osage, Iowa; d. 6 Jan. 1954, Osage, Iowa.
3. FERGUSON, Rose Ann b. 10 Apr. 1875, Assumption, Illinois; d. 28 Aug. 1954, Osage, Iowa.
4. BAILEY, Andrew Cyrus b. 14 Feb. 1836; m. 1861 Merrimack, Wisconsin; d. Napa, California.
5. SPERRY, Mary Matilda b. 3 Apr. 1846, Pennsylvania; d. Napa, California.
6. FERGUSON, George d. 1906, Osage, Iowa.
7. GROGAN, Mary d. Dec. 1887, Osage, Iowa.
14. GROGAN, Edward b. 22 Nov. 1822, Perry Co., Ohio; d. 21 Apr. 1909 Worthing, S. Dakota.
15. KEENAN, Julia b. 9 May 1823, Pennsylvania; d. 3 Mar. 1909, Worthing, S. Dakota.

ANCESTOR CHART: Margaret (VAILE) BAILEY, 1634 Windsor, Wichita, Ks.

1. VAILE, Margaret Alice b. 29 Sept. 1919, Guymon, Oklahoma; m. 1 Aug. 1943, Dodge City, Kansas, James BAILEY.
2. VAILE, Roy Morris b. 20 July 1896, Lamar, Missouri; m. 31 Jul. 1918, Guymon, Oklahoma; d. 17 June 1954, Macksville, Kansas.
3. ALEXANDER, Edith Eleanor b. 5 Jan. 1902, Shawnee, Oklahoma.
4. VAILE, Albert J. b. 9 Jan. 1853, Battle Creek, Michigan; m. 23 Dec. 1875, Augusta, Kansas; d. 28 Dec. 1945, Andover, Ks.
5. MORRIS, Ida E. b. 10 Feb. 1859, Tecumseh, Kansas; d. 18 Sept. 1936, Guymon, Oklahoma.
6. ALEXANDER, Joseph Marion b. 2 Sept. 1879, Milo, Iowa; m. Warren Co., Iowa; d. 8 Nov. 1966, Stafford, Kansas.
7. KUKUK, Minnie Mabel b. 28 July 1881, Madison, Iowa; d. 1947.
8. VAILE, Thedrow S.
9. CULVER, Harriet Louise b. Nov. 1833, New York.
10. MORRIS, William H. b. 23 Aug. 1834, Putnam, Ohio; m. 18 May 1856, Tecumseh, Kansas; d. 1 Jan 1911, Wichita, Kansas.
11. LEONARD, Martha E. b. 25 Aug. 1837, Waterford, Oklahoma; d. 28 October 1910, Andover, Kansas.
12. ALEXANDER, James M. b. 13 June 1851, Milo, Iowa; m. 31 Dec. 1871, Warren Co., Iowa; d. 13 June 1933, Waverly, Kansas.
13. CURRY, Sarah Jane b. 15 July 1853, Indianola, Iowa; d. 24 Jan. 1924, Waverly, Kansas.
14. KUKUK, Frederick b. 18 Nov. 1833, Mecklenberg, Germany; d. 2 Feb. 1902, Shawnee, Oklahoma.
15. FREDRICKA, Mary b. Jan. 1851, Germany; d. 5 June 1891.

ANCESTOR CHART: Samuel H. CROZIER, Route 2, Sedgwick, Kansas 67135

1. CROZIER, Samuel Henry b. 2 June 1942, Halstead, Kansas; m. (2) 2 Jan. 1970 Micki Donnelly Lane.
2. CROZIER, Samuel Henry b. 12 Sept. 1908, Copan, Oklahoma; m. 19 July 1938; d. 23 July 1958, Mt. Hope, Kansas.
3. RIMBEY, Hazel Olive b. 25 Dec. 1912, Haven, Kansas.

Ancestor Chart - Samuel H. CROZIER / Continued

4. CROZIER, Charles Adam b. 17 Sept. 1885, Warren Co., Pennsylvania; d. 14 Nov. 1931, Eldorado, Kansas.
5. BARBEE, Nancy Caldonia b. 10 May 1890, Arkansas; d. 15 Mar. 1922, Oklahoma.
6. RIMBEY, Leonard Chester b. 17 July 1884, Athensville, Illinois; m. 19 Dec. 1908; d. Nov. 1937, Halstead, Kansas.
7. FITZSIMMONS, Jessie Olive b. 17 Dec. 1890, Logan Co., Kansas; d. 13 Jan. 1960, Cottonwood Falls, Kansas.
8. CROZIER, Samuel Henry b. 9 Aug. 1864, Steamtown, Pennsylvania; d. 5 Dec. 1904, Warren, Pennsylvania.
9. EMIG, Lena b. 8 Sept. 1863, Hamilton, Ontario, Canada; d. 15 May 1930, Oil City, Pennsylvania.
10. BARBEE, Benjamin Grey b. 1 May 1871; m. 15 Aug. 1889; d. 31 Dec. 1943, Oklahoma.
11. LIVELY, Frances Ella b. 13 Nov. 1871, Jasper, Arkansas; d. 8 Jan. 1940, Shidler, Oklahoma.
12. RIMBEY, Jesse Yates b. Illinois; d. Illinois.
13. BLAKEMAN, Mary
14. FITZSIMMONS, John Garrett b. 26 May 1859, Illinois; d. 1 May 1940, Dodge City, Kansas.
15. RUYLE, Elzina b. 6 Feb. 1860, Illinois; d. 15 June 1932, Mt. Hope, Kansas.
16. CROZIER, William Samuel, b. ca. 1824.
17. ? , Susan b. circa 1827.
18. EMIG, Adam b. Switzerland.
19. LEMON, Rosena Samaara b. Switzerland.
20. BARBEE, Lew Willis
21. JONES, Mary
22. LIVELY, Willis.
23. GEORGE, Cassie b. Tennessee.

ANCESTOR CHART: Micki (DONNELLY) CROZIER, Route 2, Sedgwick, Ks. 67135

1. DONNELLY, Micki b. 18 Jan. 1937, Wichita, Kansas; m. (2) 2 Jan. 1970, Samuel H. CROZIER.
2. DONNELLY, Clifford Eugene b. 8 October 1916, Woodward, Oklahoma; m. 27 Apr. 1934.
3. DONHAM, Thelma May b. 2 Mar. 1918, Wichita, Kansas.
4. DONNELLY, Curtis Eugene b. 28 Apr. 1889, Beaver City, Indian Territory; m. 15 Oct. 1913; d. 28 August 1979, Wichita, Ks.
5. PARKS, Quintilla Margaret b. 14 June 1893, Haven, Kansas; d. 18 Aug. 1982, Wichita, Kansas.
6. DONHAM, Isaac Ferguson b. 26 Apr. 1864, Spencer Co., Indiana; m. 31 May 1897; d. 30 Mar. 1939, Wichita, Kansas.
7. TURNER, Anetta May b. 8 May 1878, Peoria, Illinois; d. 30 Apr. 1951, Wichita, Kansas.
8. DONNELLY, Jim/John R. b. 10 Apr. 1846 or 26 Aug. 1842, Leitrim, Ireland; m. 25 Sept. 1887; d. 17 July 1921, Woodward, Oklahoma.
9. SMITH, Bertha b. 9 Nov. 1867, Spirit Lake, Iowa; d. 9 Oct. 1942, Wichita, Kansas.
10. PARKS, Avery Owen b. 4 May 1854, Decatur, Illinois; m. 12 July 1885; d. 17 March 1911, Curtis, Oklahoma.
11. VARNER, Mary Margaret b. 23 Nov. 1867, Melrose, Virginia; d. 12 Oct. 1955, Wichita, Kansas.

Ancestor Chart - Micki (DONNELLY) CROZIER / Continued

12. DONHAM, George J. b. 29 May 1834, Spencer Co., Indiana; m. 7 Aug. 1865; d. 19 Mar. 1920, Wichita, Kansas.
13. WHITEHOUSE, Mary F. b. 5 May 1840, Spencer Co., Indiana; d. 1 July 1920, Wichita, Kansas.
14. TURNER, David Emanuel b. 25 Aug. 1853, Logan Co., Illinois; m. 15 Mar. 1876; d. 16 Dec. 1921, Wichita, Kansas.
15. DECKER, Mattie Melvina b. 24 June 1857, Bloomington, Illinois; d. 29 Dec. 1934, Wichita, Kansas.
16. UNKNOWN
17. UNKNOWN
18. SMITH, Hiram S. b. 1 Nov. 1837; m. 1 Jan. 1853; d. 28 Feb. 1891, Oklahoma.
19. RAYMOND, Ruth Amelia b. 8 Dec. 1839, Illinois; d. 9 Nov. 1910, Oklahoma.
20. PARKS, Rufus Wilson b. 4 Feb. 1828, Connecticut; m. 12 June 1851; d. 21 Aug. 1911, Kansas.
21. CHAPMAN, Susan Frances b. 3 July 1831, Ohio; d. 25 Sept. 1895, Kansas.
22. VARNER, Jacob b. 26 Mar 1828, Virginia; m. 16 June 1853; d. 16 Dec. 1878, Virginia.
23. MORRIS, Luthenia b. 8 Nov. 1827, Virginia; d. Ca. 1914, Okla.
24. DONHAM, John S. b. circa 1809, Ohio; d. 1868, Indiana.
25. FAGIN, Rachel b. circa 1813, Ohio; d. 20 Dec. 1905, Indiana.
26. WHITEHOUSE, Cornelius b. 4 Dec. 1808, Kentucky; m. (1) 17 Mar. 1829, Kentucky; d. 14 Sept. 1879, Indiana.
27. INMAN, Susan b. Kentucky.
28. TURNER, Harrison b. 6 Jan. 1825, Virginia; m. 7 May 1850; d. 3 Sept. 1912, Kansas.
29. PRINTZ, Rebecca Ann b. 13 Feb 1823, Virginia; d. 14 Aug. 1895 Kansas.
30. DECKER, Joel b. 1834, Virginia; d. 1896, Kansas.
31. BROOKS, Lucy Jane b. 1807, Virginia; d. 1888, Illinois.

compiled by Cora Francoeur

+ + + + +

EARLY SETTLERS OF BELLE PLAINE, SUMNER COUNTY, KANSAS

JAMES MASON came from Ft. Madison, Iowa by train to Emporia. His brothers, Thomas, John and Walter had homesteaded earlier, having arrived in 1871. Thomas chose a farm east of town. John and Walter homesteaded north of Belle Plaine on Cowskin Creek. The Masons were educators. James arriving in 1872 was first teacher in B.P. Walter taught in Wichita and rural schools and later became a telegrapher on Santa Fe. R.R. Thomas was elected first County Superintendant of Schools in Sumner Co.

Thomas children were Charlie & Minnie Cusey.
Walter's children: Will, Chet, Ethel, Lowell, Mary & Margaret.
Walter became one of the first orchard men in this valley. He and the Alters shipped many box car loads of apples from the area.

The dinner fork was first introduced in Italy in 1431 and in England in 1808..

+++++

QUERIES WILL BE USED AS SPACE PERMITS. Please limit your query to 50 words or less. Type or print, if possible. Capitalize all Surnames but not given names. Give a date, location or event. Please read your query before mailing. If your query cannot be understood, we will not publish it. Each member is allowed two queries per publication; non-members, one query if space permits. Mail to Attention of Query Editor to address shown inside Register cover. Dorothy Dearth, Editor

18383-35 JAY/HAYDEN/SANDELL/GRICE/LINDLEY...Searching, Daniel JAY, b.1834 Ill. d. 1919 Lubbock, Texas. Wife Lucy HAYDEN b. 1841 d. 1902 Jayton, Texas. Lived Kansas 1868 to 1876. ch. George; Susan, m. Robert Howe; William; Marfett; Thomas; John; Irene m. William SANDELL; Alva; James; Lucy m. Joseph GRICE; Richard; Joseph; Andy. Barbara JAY LINDLEY, 2507 Houser St. Muscatine, Iowa 52761

18383-36 McFALL/MILLER/DEARTH...Like to correspond with anyone having knowledge of the Harvey McFALL family from Ireland living in Lawrence Co. Indiana in 1800's. Had dau. Sarah Ann b.27 Feb.1842. m. Abel MILLER 1869, Daviess Co. Ind. My G-Grandparents came to Kans. in 1884. Dorothy DEARTH 5048 No. Broadway, Wichita, Ks67219

18383-37 DUNCAN/KILGORE/PARKER/...Seek information, Mary Ellen and James DUNCAN, 1850 Lykins, Miami Co., Ks. Mary Ellen named heir, final settlement of Estate of Mathew KILGORE Sr. Ross Co. Ohio.1860. Mathew KILGORE d. 1822. Who were the parents of Mary Ellen DUNCAN?

AND

18383-38 FLICK/FRANKLIN/ALDER/VAN SCYOPE/MOORELAND...Information, family of William FLICK and Mary Catherine(Hayes)FLICK. ch. Esther m.10 Mar. 1883 Iowa. John FRANKLIN; Alameda m. Davidson, Iowa. Mary m. William ALDER, Iowa. Bertha m. Earl VAN SCYOPE. 2nd. husband Bud MOORELAND, Lookout, Okla. Member of family was living, Lincoln Co. Ks. 1915 Who? Cora Hayes Parker, 3420 East Lincoln, Wichita, Ks67218

18383-39 ROUSE/MORLEY/BUCHNER...Need death date and place for George C. ROUSE ; also second marriage (after 1850). Children; Frank and Carrie (Mrs MORLEY of Kansas City) Children of first marriage; Schuyler, Steve, Thomas Jefferson, Mary, Martha, Sarah born in Canada and Illinois from 1830 to 1845.

AND

18383-40 MASSEY/CURFMAN/BUCHNER...Need certified copies of family bible records of Jacob MASSEY m. Catherine CURFMAN, March 21, 1839 Hagerstown, Maryland and d. in El Paso, Ill. Feb. 14, 1885. Children; Lou, Will, George Daniel, Cal, Ann, Florence, John and Charles. Doris BUCHNER, 2711 East Morris, Wichita, Ks. 67211

18383-41 JENKINS/SCRUGGS/GROSS(E)/FARMER/THOMAS/HOGGATT/CROW...Would like to hear from people searching these names; JENKINS, Crockett Co. Tenn. Sequoyah Co. Okla; SCRUGGS, Tishomingo Co. Miss. Sequoyah Co. Okla; GROSS(E) Anne Arundel Co. Md; FARMER, Layderdale Co. Ala; THOMAS, Powhattan and Cumberland Co. Va; HOGGATT, Albemarle Co. Va. and Berkshire, England; CROW, Essex Co. Va. and Ireland.

AND

18383-42 JENKINS/NAILES/NALES/CHERRY...Searching for Samuel Oliver Hazzard Perry JENKINS, b. 24 March 1828 in N. C. W. possibly Martha NAILES/NALES? 13 children were: William H., John Thomas, Sarah Ann, Susan Paralee, Lucy Jane, Robert Bynum, (my grandfather) Martha E., Mary Alice, Louisa Annah, Selia, Arrena, Arcena, and Permella. Children born Crockett Co. and Haywood Co. Tennessee. Samuel JENKINS in Haywood Co. Tenn. Census 1860 to 1880. Where in N. Carolina did Samuel come from?

AND

18383-43 THOMAS/WOOD/HOGGATT/HOWELL...Searching for parents, brothers and sisters of Job THOMAS (Rev. soldier) d. ca 1787 in Va. Wife Elizabeth HOGGATT. S. Jess THOMAS (father of Nancy THOMAS SCRUGGS) d. July 1805 Cumberland Co. Va. Was first wife Sally WOOD? Second wife was Mary HOWELL. Margaret R. Cherry, 475 Mattewson, Wichita, Ks. 67214.

QUERIES

18383-44 ROSS...Edwin Ruthven b. Nov.20,1835 Madisonville, Ohio. S. of Joseph and Nancy Ross. m. Sophronia Caroline James March 10,1870 Mt. Sterling, Illinois. Left Versailles, Ill. on Oct. 6, 1870 with father-in-law, John W. James, and W.C. Woodman for Wichita, Ks. by wagon train. Arrived in Wichita, Ks. Nov.8,1870. 1892 census lists 5th Avenue, 2 doors South of English St.-occupation -Carpenter. d. Sept. 12,1893 at Wichita. bur Highland Cemetary. Father of Ora Belle Ross Marvin, Thomas Henry, Edwin Earl, Minnie Ellen Ross Summers, Edith L. Ross Jones, and Glenn Arthur.

AND

18383-45 JAMES...John W. b. October 1, 1819 Scott County, Indiana. S. of Thomas and Priscilla James. m. Martha Garrett Dec.19, 1843 Schuyler Co. Ill. To Sedgwick Co.Ks. 1870. Father of six children; Mary E, James Mann, Carrie Ross, Henry J, Calvin G.,Ellen and Hurlburt F. d. July 7,1912 at Waco, Ks. and buried there. John H. Marvin, 2039 Irwin Place, Madison Wisconsin 53713

18383-46 BROWN/BOICE/CASWELL/BROWN...Need marriage information-Volnby BROWN of Osborne Co. Ks. m. to Darcy J. BOICE and/or Mary Jane Boyd. Also parents of Narvonias CASWELL b. 14 June,1884 Sullivan Co. Mo. d. 29 Dec. 1941, Red Oak, Iowa. Darrell Ellsworth BROWN, 7111 East Castle, Wichita, Ks. 67207

18383-47 VAN WAGONER/VAN WAGENEN...Would appreciate hearing from VAN WAGONER/VAN WAGENEN family members-hoping to publish a book this year on the Michigan branch. Philo W. VAN WAGONER, 8891 Collingwood Dr. Los Angeles, Ca. 90069.

18383-48 SNYDER/RICHARDSON/DICKSON/HARTMAN/ESAU...Need information on Benjamin Franklin SNYDER,b.14 June 1860, Marion,Ohio d.15 Feb. 1921, Burrton, Ks. m.1883 (Ks?) Eunice Emma RICHARDSON b.7 April 1865, Wheeling, W. Va. d. 13 July 1920, Burrton, Ks. Proof of marriage needed. Thomas King DICKSON b. 2 April 1859 Ohio. d. 1938Ks m.Sarah HARTMAN - Lilly ESAU, 206 Laurel Lane, McGregor,Tex.77657

18383-49 SHOWACY/CHAUSSÉE...Looking for Thomas Michael SHOWACY b. ca. 1865 Jefferson, So.,Dakota. Originally Thomas Michael CHAUSSÉE, went by Michael SHOWACY in adult life. Last known address Ortonville, Mn. ca 1906 .

AND

18383-50 ARMSTRONG/GUNDERSON/BUCK...Need information about Harvey David ARMSTRONG b. 9 Aug. 1845 Ohio(?) d. 11 Aug. 1897, Houriston twp. Mn. Homesteaded near Shakopee Lake, Mn.(now Buffalo lake) m. Martha GUNDERSON ca 1872. Norman H. BUCK, 854 Brook Forest Rd. Derby, Ks. 67037

* * * * *

PICTURE POSTCARDS: The following Picture Postcards should be of interest to collectors

Brackenridge Park, San Antonio, Texas.

Golden Gate Park, San Francisco, California.

Cave of the Winds, Colorado.

Methodist Church, Excelsior Springs, Missouri.

Ames Monument, Sherman Hill, Wyoming.

The Dam on Labette Creek, Parsons, Kansas.

Baptist Church, Collinsville, Oklahoma.

First Baptist Church, Parsons, Kansas.

Monument, Syracuse, N.Y.

Bride & Mill, Kingman, Kansas.

Sequoia National Park, California.

Franklin Park, Boston, Mass.

Gloucester, Mass., Schooner, Niagara.

White Mts., New Hampshire.

Irwin Hall, Lindenwood College, St. Charles, Mo.

Cane Field, Houston, Texas.

Hot Springs, Arkansas.

Sky Scrapers, St. Louis, Mo.— Stop by MEHS Library Office to see these.

SURNAME INDEX

ACHEMY	122	DAUGHTY	104	HARLAN	122
ADAIR	122	DAUTRICH	104	HARLESS	122
AKIN	122	DAVIS	104	HARRALL	122
ALDER	139	DEARTH	139	HARPSTRITE	127
ALLEN	123,124	DECKER	137,138	HARTMAN	140
ALEXANDER	136	DEGUR	122	HAYDEN	139
ARMSTRONG	140	DICKERSON	121	HAYES	139
BAILEY	136	DICKSON	140	HEDRICK	102
BALDING	120	DOHERTY	123	HENDRICKSON	124
BARBEE	137	DONGLOP	122	HENRY	120
BARR	124	DONHAM	138	HIGGINS	120
BEE	122	DONNELLY	137	HILLIARD	124
BELL	122,123	DUNCAN	122,139	HILLS	128
BENDER	135	DYE	104	HIPPLE	120
BENNET	125	EGNEW	135	HOGGETT	139
BENEDICK	120	ELLIOTT	104	HOLLAND	123
BENSON	111	EMIG	137	HOSEY	123
BINKLEY	104	EMONS	121	HUBBARD	102
BIRD	114	ENGLAND	134	HUDSON	128
BLACK	124	ESAU	140	INMAN	138
BLAKEMAN	137	EYERLY	102	JAMES	128,140
BOGIR	134	FABRIQUE	124	JAY	139
BOGGS	128	FAGIN	138	JEMKINS	139
BOICE	140	FARMER	139	JONES	137
BRANTLEY	122	FERGUSON	136	JANSEN	127
BREDOW	134	FISHBACK	134	LANE	121
BROOKS	138	FISHER	124	LEMON	137
BROSIOUS	134	FITZSIMMONS	137	LEONARD	136
BROWN	104,120,140	FLETCHER	123	LEISTEKOW	134
BRUCE	120	FLICK	139	LINDLEY	137
BUCK	140	FLOYD	124	LIVELY	137
BUCHNER	139	FOOKS	135	LOOMIS	135
BUTLER	114,135	FOREMAN	122	LONGDORTH	124
CARLOCK	111	FRANKLIN	139	LOSEE	124
CARR	121	FREDERICKA	136	LUZADDER	134
CASWELL	140	FRITCH	104	MAITLEN	134
CHACE	120	FULLER	123	MANKILLER	122
CHAPMAN	138	FULSON	122	MASSEY	139
CHAUSSEE	140	GARRETT	122	McADAMS	124
CHERRY	139	GENTRY	128	McChesney	123
COH-TA-YEH	123	GEORGE	137	McCLEARY	104
COOK	104	GILLISPIE	128	McDONALD	123
CORDRY	122	GILLIS	122	McFALL	139
CORNELISON	128,128	GHORMLEY	122	MICHAEL	134
CORNTAUSLE	123	GOGGINS	124	MILLER	139
CORNWELL	104	GORDY	120	MINNICK	125
CRAIG	123	GRAY	124	MOORELAND	139
CROSKEY	124	GREENLEE	124	MORELY	139
CRITTENDEN	122	GRICE	139	MORGAN	121
CROW	139	GROGAN	136	MORRIS	120,136,138
CROWEL	122	GROSS	102	MUMMERY	102
CROZIER	136,137	GROUNDHOG	122	MURPHY	123
CULVER	136	GUNDERSON	140	MURRY	123
CURFMAN	139	HAMBLIN	122	NAILS (NALES)	139
CURRY	136	HAMILTON	102	NOBLET	123
		HARDIN	123		

SURNAME INDEX

OWSLEY	125	TADPOLE	123	WHITE	104,128
OLDHAM	125	TAGGART	120	WHITEHOUSE	138
OATLEY	124	TALBOT	122	WHITEHAM	124
OSBORNE	121	TAYLOR	122	WHITEKER	135
OWENS	124	TERRELL	128	WHITLOCK	125
PADGETT	135	THOMAS	123,139	WHISENHUNT	123
PARKER	139	THUMA	102	WILKIE	122
PARKS	137,138	TURNER	138	WILLIAMS	122
PARRIS	122	UMSTILLER	124	WILLS	104
PARTAIN	122	VAILE	136	WINSBY	127
PERLONE	122	VAN SCYOPE	139	WOOD	139
PETTY	129	VAN WAGNER	140	WOODAL	122
PHILLIPS	123	VAN WEGEN	104	WOODSON	128
PIDDING	123	VARNER	138	WRIGHT	120,135
PRITCHARD	121	WARD	122	YOUNG	127
PRINTZ	138	WAYHT	123	ZENNER	125
PURCELL	104	WHEELER	135	ZIMMERMAN	135
RATLIFF	122	WHIPPLE	135		
RAYMOND	138				
READ	134	Surnames in all articles of Genealogical nature in this issue are in this Index with the exception of those lists printed in alphabetical order. They include New Members St. Marks, Butler Co census, Cherokee marriage, 20th Reg. Spanish-Ph. War.			
REDDICK	123				
RENTZ	124				
RICHARDSON	140				
RILEY	129				
RIMBEY	136,137				
RISS	122				
ROBERTSON	120				
ROGERS	122				
ROSS	122,140				
ROUSE	139				
RUYLE	137				
SANDELL	139				
SCOTT	123				
SCHIFFENHAUER	104				
SCHUNK	135				
SCRUGGS	139				
SHORE	104				
SHOPCOTTE	104				
SHANNON	124				
SHOWACY	140				
SHRACK	134				
SMITH	122,137, 138				
SIXKILLER	122				
SMITHER	121,128				
SNOW	122				
SNYDER	140				
SPARR	104				
SPERRY	136				
STEEL	123				
STEPHENS	125				
STEWART	123				
STILL	123				
STONE	104				
SUMMERS	127				
SWINHART	123				
SUTHERLAND	128				

MIDWEST HISTORICAL AND GENEALOGICAL SOCIETY, INC.

Membership dues: Single...\$10.00
Couple... 15.00

Libraries & Societies.....\$ 8.00
for
Register, quarterly magazine
Back issues, single copy...\$2.50

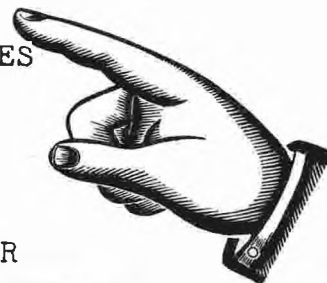
Published May, Aug., Nov. & Feb.

Year begins April First.

P.O. Box 1121
Wichita, Ks. 67201

WANTED:

ANCESTOR CHARTS- QUERIES
BIBLE RECORDS
FAMILY STORIES
COURT RECORDS WILLS
SCHOOL AND EARLY
CHURCH RECORDS FOR
PUBLICATION IN REGISTER



SOMETHING MORE

THIS has been a busy year for MHGS Society Members. There are some very energetic ladies that keep us hopping! Early in the year Sherrie Adams "put together" a very successful Bake Sale at Cowtown. More than 200 people attended the instruction Classes for beginners and advanced genealogists in conjunction with the Genealogy department of Wichita Public Library. Thanks to the good planning of Jo Ann Schiefelbein. Helen Lee executed a well received Seminar. Mr. Neal Smith, Mesa, Arizona presented an interesting and informative program. A long day with world's of worthwhile and helpful material with 130 attending. Now, the Soup & Chili Feed at 4-H building, with proceeds going into the Building Fund, adds to the Fun. Four more months of this year to complete, so- there will probably be some more good things to do!

+†++++++

If you are moving, please let us know, this will save postage and continue the receipt of your Alert and Register. IF YOU DO NOT RECEIVE YOUR REGISTER, notify us but be sure you have paid your membership dues for this year. We begin with a new Mailing List April 1 and do not mail the publications unless your name is on the list. Gwen Seefeld is in charge of making the labels which is one big chore! (It is not always the Post Office's fault, we all make mistakes) +++++++

A letter from Juleigh Clark, Librarian in Kansas Room at Hays Public Library, Hays, Ks., stating that she assists researchers five days a week by appointment and that they have 4000 volumes and 56 periodicals on Kansas History and genealogy. Also a Vertical File covering 496 subjects and some information on each County in Kansas.

+*****

Taken from Topeka Genealogical Society Quarterly, Vol. 13 no 3, 1983

A news item from the Holton Recorder 15 July 1915 "The value of the the newspaper collection of the Kansas State Historical Society, conceded to be the largest in the world, recently was estimated at one million dollars by an expert of the Congressional Library, Washington, D.C. Includes every newspaper and periodical published in the state, and files of numbers of the larger papers outside of Kansas." (45,000 volumes at that time) How many in 1983? This was before microfilm and now most all *newspapers are on film. According to the History of Kansas Newspapers, a history of Nespap newspapers and magazines published in Kansas from Organization of Kansas Territory, 1854 to Jan. 1, 1916 under direction of William E. Connelley, Secretary, the first Kansas banner was a newspaper. *should be early newspapers.

+*****

Season's Greetings

and

Best Wishes

for a very

Happy New Year

Advertising



RESEARCH IN OHIO

GENEALOGICAL RESEARCH IN OHIO'S 88 COUNTIES

EXPERIENCED CERTIFIED GNEALOGIST. REFERENCE

LIBRARIAN. EDITOR FOR OHIO GENEALOGICAL SOCIETY'S

REPORT. AUTHOR OF OHIO GENEALOGICAL PUBLICATIONS.

SEND SASE FOR RATES WITH DESCRIPTION OF PROBLEMS TO:

CAROL WILLSEY BELL, C.G.

4649 YARMOUTH LANE

YOUNGSTOWN, OHIO 44512

FREE

Complimentary Copy of The Genealogy Digest Magazine.

P.O. Box 15681

Salt Lake City, Ut 84115

MARGARET CHERRY, 475 Mathewson, Wichita, Ks. 67214-phone: 262-2743

Collects old photos and will sell for reasonable amount the following: (all in good condition)

- 1.. G.W. Chase (Photographer, Newark, Oh.)
2. Ofilma Peterson Schermershorne. 17. Squire Lane, Washington,D.C.
3. Mary Garman, baby picture, taken in Hutchinson. (1906)
4. Delos Powell Woods -1896- Wichita, Kansas.
5. Mignon Bernice Schell, afe 4 months, July 4, 1886, Wichita,Ks.
6. Ida Hess, young girl, taken at Napoleon, Ohio.
7. Harry Ballinger, taken McMinville, Oregon.
8. Mr. & Mrs. Shutz and children taken Richmond, Indiana.
9. Tommy Dean Lindenberger and Aunt Mille Spruce (sp.?) Ohio
10. Rosa Litteral. 18. John & Lizzie;Mr &Mrs. Smith, Sherman, Ks.
11. Mrs.&Mrs. E. Bunday (on back says for Lizzie)
12. Mrs. Bunday and daughter Jocie (for Lizzie)
13. Cornelius,Thomas McCarty, Samuel W., James Marion Lane.
14. Holcombe, 19 yrs. in army uniform. taken 1919.
15. Frances Cecilia Bengtson, May 19, 1907, Wichita, Ks.
16. Mr. Kurmer ? Ratliff, Chicago, Ill.
19. Laura Harriet Panter, 17 months, Wilbur Neb.