



# **MIDWEST Historical and Genealogical REGISTER**

**Vol. XVIII July - September 1983 No. 2  
Wichita, Kansas**

# SEMINAR

MIDWEST HISTORICAL & GENEALOGICAL SOCIETY, INC.

WICHITA, KANSAS

INVITES YOU TO ATTEND

SEPTEMBER 10, 1983-SEMINAR

FEATURED SPEAKER: CLIFFORD NEAL SMITH of McNEAL, ARIZONA

## EDUCATION

Oklahoma State University B.S.  
University of Chicago, A.M.  
Columbia University, N.Y. Ph.D. card  
Military Service: U.S. Navy, Lieut.  
Five Battle Stars.

## PUBLICATIONS

Federal Land Series in 4 volumes  
Encyclopedia of German-American  
Genealogical Research; American  
Genealogical Resources in German  
Archives (both written in colla-  
boration with his wife); many  
monographs and over 100 articles in  
various Genealogical Journals.

## HONORS

Citation for contribution to the  
Science of Genealogy, American  
Society of Genealogists.  
Printed in: Who's Who in Genealogy  
& Heraldry; Who's Who in the West.

## CAREER ACTIVITIES

United States Displaced Persons Comm.  
of Munich  
Phillips Petroleum Company,  
Caracas, Venezuela  
Mobil International Oil. Co., N.Y.,  
Hamburg and Geneva  
Ass't Professor at Northern Illinois  
University.

## TOPICS:

9:00 a.m. to 11:45 a.m.

The Use of Land Records in Genealogical Research

Religious Migrations & Their Significance in Genealogical Research

11:45 to 1:15 p.m. LUNCH BREAK

1:15 p.m. to 4:00 p.m.

Beginning German-American Genealogical Research

Continuation of the above subject and discussion of Individual German-  
American genealogical Research problems.

LOCATION: Grace Methodist Church, 944 S. Topeka, Wichita, Ks.

FEE: \$12.00 per person pre-registration by September 3, 1983

\$14.00 per person at the door

includes lunch, handouts and DOOR PRIZES

Lunch served in the church dining room.

YES, I WANT \_\_\_\_\_ reservations for the Seminar

AMOUNT enclosed \$ \_\_\_\_\_

Please make check to MIDWEST HISTORICAL & GENEALOGICAL SOCIETY, INC.

Send to P.O. Box 1121, Wichita, Ks. 67201- Attention: Helen Lee

Reservation can be made at the Midwest Library, Historic Cowtown (Wichita)

Name \_\_\_\_\_

Phone no. \_\_\_\_\_

ADDRESS \_\_\_\_\_

## BEAUTITUDES OF A FAMILY GENEALOGIST - Wilma Mauk

Blessed are the great grandfathers, who saved embarkation and citizenship papers,

For they tell whence they came.

Blessed are the great grandmothers, who hoarded newspaper clippings and old letters,

For these tell the story of their time.

Blessed are all grand fathers, who filed every legal document,

For this provides the proof.

Blessed are the grandmothers, who preserved family Bibles and diaries,

For this is our heritage.

Blessed are fathers, who elect officials that answer letters of inquiry,

For--to some--the only link to the past.

Blessed are mothers, who relate family tradition and legend to the family,

For one of her children will surely remember.

Blessed are relatives, who fill in family sheets with extra data,

For to them we owe the family history.

Blessed is any family, whose member strives for the preservation of records,

For their's is a labor of love.

Blessed are the children, who will never say, "Grandma, you have told that old story twice today".

Submitted by Corrine Afton

---

### 121st REGIMENT OHIO VOLUNTEER INFANTRY

submitted by Dora Lampton

#### THREE YEAR'S SERVICE

This Regiment was organized at Delaware, O., September 11, 1862, to serve three years. It was mustered out of service June 8, 1865, in accordance with orders from the War Department.

The official list of battles in which this Regiment bore an honorable part is not yet published by the War Department, but the following list has been compiled after careful research during the preparation of this work.

PERRYVILLE, KY., . . . . .	October 8, 1862
CHICKAMAUGA, GA., . . . . .	Sept. 19-20, 1863
LOOKOUT MOUNTAIN, TENN., . . . . .	November 24, 1863
MISSION RIDGE, TENN., . . . . .	November 25, 1863
BUZZARD ROOST GAP, GA., . . . . .	May 8, 1864
ROME, GA., . . . . .	May 18, 1864
KENNESAW MOUNTAIN, GA., . . . . .	June 9-30, 1864
PEACH TREE CREEK, GA., . . . . .	July 20, 1864
ATLANTA, GA., (siege of) . . . . .	July 28 to Sept. 2, 1864
JONESBORO, GA., . . . . .	Aug. 31 & Sept. 1. 1864
BENTONVILLE, N. C., . . . . .	March 19-21, 1864

CONTENTS

OFFICERS. . . . .	COVER PAGE
SEMINAR. . CLIFFORD NEAL SMITH, SPEAKER. . . . .	49
BEATITUDES OF A GENEALOGIST. . . . .	50
FROM THE PRESIDENT . . . . .	52
OFFICER PAGE . . . . .	53
LIBRARY LORE. . . . .	54
ADDITIONS TO MHGS LIBRARY. . . . .	55
SUNFLOWER SEEDS. . . . .	56
NEW BOOKS & MICROFILM IN WICHITA PUBLIC LIBRARY (Gen.)	58
BOOK REVIEWS. . . Melrose Ks.; Hardesty, etc. . . . .	62
QUAKER MONTHLY MEETINGS IN KANSAS 1856-1883. . . . .	63
GETTING STARTED IN COMPUTER GENEALOGY. . . . .	66
SEDGWICK COUNTY, KS. LAND DEEDS 1874-75. . . . .	67
SEDGWICK COUNTY MARRIAGES, 1887. . . . .	69
BUTLER COUNTY, KANSAS. . . . .	71
BOOM TOWN, Butler Co. Ks. . . . .	72
KANSAS STATE CENSUS, 1885. .Augusta, Ks. . . . .	75
BUTLER COUNTY, KS. MARRIAGES 1861-72. . . . .	77
WELCOME NEW MEMBERS. . . . .	78
GRAIN HARVEST IN EARLY DAYS. . . . .	79
ABANDONED TOWNS IN REPUBLIC COUNTY, KS. . . . .	82
SUMNER COUNTY EARLY DAY POST OFFICES, continued. . . .	83
BURDUE FAMILY CEMETERY RECORDS. . . . .	84
LANIER FAMILY BIBLE RECORDS . . . . .	85
ANCESTOR CHARTS. . . . .	86
QUERY COLUMN. . . . .	90
SURNAME INDEX. . . . .	92
SOMETHING MORE. . . . .	94
ADVERTISING . . . . .	95

PUBLISHED QUARTERLY BY MIDWEST HISTORICAL & GENEALOGICAL SOCIETY

MEMBERSHIP DUES: Individual .....\$10.00.....April 1 through March 31.  
Family (2).....\$15.00/yr.. includes one issue each quarter.  
Libraries, Historical and/or Genealogical  
Societies.....\$ 8.00 per year  
Single copies...\$ 2.50 each..includes tax and mailing costs.

Members may submit any number of queries; two to be published each issue. Non-members are limited to one free query per yr. as space allows. Memberships received after publication mailing will receive back issues for the year with the next bulk mailing. Mailing dates: ca May 15, Aug. 15, Nov.15, & Feb. 15.

Please send queries and articles for publication (Bible records, Court records, obituaries, listings, historical stories , etc.)with "Permission to Publish", your signature, date submitted and source of information to Attention of the editor, Gwen Harper, 1615 N. Mt. Carmel, Wichita, Ks. 67203 or MHGS Library.

All material for publication is subject to editing to conserve space. Every effort will be made to publish accurate material; however, Midwest Historical and Genealogical Society or the Editor will not assume responsibility for error on part of contributor. Corrections of proven errors will be published. We are not responsible for publishing rights in contributed material. All rights are reserved, reproduction in whole or part by permission, only.

ADVERTISING RATES \$1.25 per line Display... $\frac{1}{4}$ page...\$3.50;  $\frac{1}{2}$  pg...\$7.00..pg.\$12.00

## FROM THE PRESIDENT

It's "Thank You" time again. To all those who baked and brought things for our Bake Sale on 14 May, to those who worked all day, to Sherry Adams who drove seventy-eleven miles picking up baked goods -- Thanks, everyone! We raised over \$400.00 to help our Library Expansion Fund.

Just a few words about Sherry -- she's a fairly new member (since April, '82) and to those who haven't met her yet, you really should. A few minutes with her will brighten your day. She's so enthusiastic and full of ideas about not just her own research, but about the Society and helping it grow. There was a nice article about her in the July Wichitan, "The Little League Commissioner is a Lady". Nice going, Sherry! Could you bottle some of that energy? We could sell it and have our own building in a week.

Don't forget our classes on 13 August. Jo Ann Schiefelbein really worked hard on this to get a good group of teachers lined up -- so tell your friends and let's make this our best turnout ever for classes and new members. And thanks to Helen Lee for all your work on the September Seminar. Be sure to get your registration in early and get a good seat for Clifford N. Smith.

Thanks to all the Board members who have pitched in to help in the office on Tuesday since Beverly Arbuckle's husband is ill.

There are so many people who are working so hard this year to help us grow and prosper. Thank you all !!

Happy Diggings,

Lou

### WAYS & MEANS COMMITTEE

ANITA SICKMON, CHAIRPERSON

After many months, many hours and much work, a reprint of PORTRAIT AND BIOGRAPHICAL ALBUM OF SEDGWICK COUNTY, KANSAS (first published 1885) will soon be "off the Press" and available for you to purchase. This book contains Full page Portrait and Biographical Sketches of Prominent and Representative Citizens of the County of that time. Watch for Announcement in the Alert about this book !

OFFICER PAGE

PROGRAMS FOR GENERAL MEETINGS

BETTY BERNSTORF, Chairperson

We meet the 2nd Saturday of the month at 2:00 p.m. Meeting place will be announced.

July 9.....CIVIL WAR RESEARCH . . . . .JOHN HANDLEY, Speaker

AUGUST 13. . . 8:45 a.m. - 3:30 p.m...GENEALOGY CLASSES..Wichita Public Library

SEPT. 10. . .9:00 a.m. to 4:00 p.m. at Grace Methodist Church, 944 S. Topeka

SEMINAR . . . CLIFFORD NEAL SMITH, Speaker

"Use of Land Records"....."Religious Migrations"....."German-American Research" and discussion of Research problems.

OCTOBER 8. . ADULT ADOPTES. . . . .SUSAN LOVETT, Speaker

NOVEMBER 12.. Annual Family Night with Covered Dish Supper

DECEMBER. . . . . No Meeting

MEMBERSHIP LISTS (1983) will be available after August 15. Inquire at the MH&GS Library Office or call IRENE EVERS, MEMBERSHIP CHAIRPERSON

REGISTRAR.....Rosalie Farni

Have you checked the surname file in the library lately? New names are being added all the time. Since the 1st of April, 153 names have been added to the surname cards and 44 new surname cards have been placed in the file. Have you filled out your cards and given them to Rosalie ? Below is sample of card.

3 x 5 card

NAME	John
b. date	
place	
m. date	to Mary Key
place	
	dau/son of
d. date	
place	
Parents:	John B. and Mary(Maiden Name) SMITH
Your name and address and membership number at the bottom of card	

NEED HELP ??? To be of more help to our members -- both local and non-local - we want to compile a list of all members who do research for others. Please send your name, address and sources or places where you can do research. Persons wanting help can contact the individual listed for information. We will list these researchers in a later issue of the Register.

## LIBRARY LORE

### I CAN'T

I Can't - I'm too Busy - I work all day - I don't feel well - I don't have any transportation - Nobody asked me - I don't like the Librarian I don't know what to do - I'm broke - I didn't attend the last general meeting so I didn't know about saving my product labels - I don't have time - I just don't want to get involved - I didn't read the Alert.

### I CAN

1. Volunteer to work in the library one morning or afternoon each month, checking materials in and out.
2. Read the Library Opportunities in the Alert and help purchase desired materials for the improvement of our Societies Library.
3. Check my cupboard at home for manufactures labels on the refund list and turn them into the Librarian. (Lists are Available in the Library Office)
4. Put a donation into the piggy bank when I visit the Library.
5. Donate any genealogical or historical materials (Books, ect) in my personal collection that I'm not using so that other people may use them.
6. Loan my personal genealogical or historical books to the Society so that other interested people may use them.
7. Volunteer to work with the every other Thursday morning work crew that places the magazines in the binders on the shelves of the MHGS Library.
8. Help with any other special projects that the Library is involved in.

BE INVOLVED - We have many dedicated "I CANS" who are working for YOU!

### CENSUS MICROFILM

It has been announced that a private contractor has been selected for the resumption of the census microfilm rental program. At the present time only the 1790 through 1900 census and Soundex are available. The rental time is for one week only. See one of the Librarians for more information and costs involved.

### NEW MAGAZINES

The MHGS Library has received our first copies of two new subscriptions, "Codorus Chronicles" and "Lancaster Legacy" These publications deal with Lancaster and York counties in Pennsylvania. Also we have a new exchange from Winston-Salem North Carolina, "The Forsyth County Genealogical Society Journal" If the coming issues contain the quality and quantity of material that the first issue has it will be a valuable addition to our collection.

### DON'T FORGET

The MHGS Library has many different charts and research aids available for sale. We carry several different Everton forms and the "Handy Book" plus forms from Rademacher and Lefax Record books. **Soundex Charts**

**Bill & Teresa Pennington, Librarians**

# ADDITIONS TO OUR LIBRARY SHELVES



- A-73 Atlas of Kansas, L. H. Everts & Co. 1982
- D- A Number of Directories have been Donated
- G-B-22 The Ballew Family Journal
- G-E-8 Conrad Emery & His Descendants by Frederic B. Emery
- G-H-22 Ancestors & Descendants of Abraham Hammer of Philadelphia Co., PA & Randolph Co., NC
- G-H-23 Hardesty Family in America by Irma H. Wesley 1981
- I-75 A Handy Guide to Record Searching in Larger Cities
- I-76 Basic Programming For Genealogists
- I-77 World Conference on Records
- I-78 Write It Right by Donald Barnes & Richard Lackey
- KC-87 Highland Cemetery-Wichita, KS Vol VIII
- M-NE-320-1 Leafy Branches, Hastings, Nebraska
- M-VA-StGenV The Southside Virginian, Richmond, VA
- M-CA-50-55 Golden Roots of the Motherload, Sonora, CA
- M-US Gen-600-XXIII Genealogy Today, Atlanta, Georgia
- M-US Gen-630-II Cherokee Blood Newsletter (CWY YE) Chattanooga, Tenn.
- NH-28 Tales of the Early Days
- NH-29 The Rifleman by John Brick Doubleday & Co.
- NH-30 Tidewater by Clifford Dowdey Little, Brown & Co.
- NH-31 Elizabeth of England by Jacob Abbot, D. M. Maclellan Book Co.
- NH-32 To the Walls of Cartagena by Allan Dwight Holt, Rinehart, & Winston, Inc.
- R-60-6 Dozens of Cousins, Napa Valley Genealogical Soc. Vol I
- R-190-41(L) Marriage Affidavits & Certificates Harrison Co., IN
- R-190-42(L) The IN Southern Cos. Collection Harrison Co Cemeteries
- R-190-43(L) A Collection of Harrison Co., IN Records by W. S. Beanblossom
- R-190-44(L) School Enumeration Harrison Co., IN 1846-1847
- R-190-45 The Indiana Years 1903-1941 by W. B. Hendrickson
- R-210-78A History of KS, State and People Vols 1,2,3,4,5
- R-210-147 The Forgotten Settlers of Kansas Vol I
- R-210-148 History of Early Greeley Co., Kansas Vol I
- R-210-149 100 Years in Kansas Education Vol I
- R-210-150 Dodge City by Fredric Young Boot Hill Museum Inc. 1972
- R-210-151 The First 100 Years with the First Baptist Church Augusta, KS
- R-210-152 Melrose, KS 1891-1983 by Donna Fry
- R-220-38 Cemeteries in Shelby Co., Kentucky Shelby Co Historical Soc., Inc 1979
- R-300-49 Chadwick Then & Now (MO) Chadwick Centennial Committee
- R-320-18 Nebraska Newspaper Abstracts Vol I
- R-410-71 PA Vital Records Vols I,II,III
- R-410-72 Central PA Marriages 1700-1896 Compiled by Charles A. Fisher
- R-410-73 Probate & Orphans Court Records of Snyder Co., PA 1772-1855
- R-430-30 Record of Commissions of Officers in the TN Militia 1796-1815
- R-470-61 Register of Deaths in C.S. Prison Hospitals at Danville, VA
- R-600-71 The Bicentennial Guide to the American Revolution
- R-600-72 Sons of the South by Clayton Rand
- R-600-73 Genealogical Dictionary of the First Settlers of New England NTBCO 4 vols
- R-600-74 Old Glory by Warner Paperback Library
- R-620-56 Migrations To From Canada by Marion C. Keffer
- R-620-57 A Franco-American Overview Quintin Publications
- R-630-16 Cherokee Blood Vol I & II

---

How long did the Civil War last after the Battle of Gettysburg?  
(22 months)

## SUNFLOWER SEEDS

Perhaps one of these will blossom in your genealogical garden!

### Kansas Council of Genealogical Societies

The annual meeting of the Kansas Council was held here in Wichita, June 3rd & 4th. Chief speaker was Rabbi Malcolm H. Stern of New York City. He is one of those who make listening easy. Time span covered was from the 1400's onward. Explained were some of the migration patterns of past centuries, and the Jewish participation in those moves. The emphasis though, was their role in settlement of the United States as a whole. In the afternoon session, time moved quickly as he spoke of the Jewish experiences of taking part in the settlement of Kansas. Rabbi Stern is not a 'late comer' to genealogy. For his thesis, his professor gave him the names of the 15,000 Jews in the United States in 1840, with the request that he determine all possible information about them. A most interesting speaker who served to enrich ones knowledge of genealogy and history.

Other interesting news from the assemblage;

The Council has issued 165 Territorial Certificates, (to 29 Jan. 1861) 502 Pioneer, (to 31 Dec. 1880) and 27 Early Settler, (to 31 Dec. 1900). Do you have yours?

Some \$6500.00 has been collected by the \$1.00 contributions to the Archives assistance fund. First project is the street indexing for 39 cities not in the 1910 Soundex census film. For some reason these had been omitted. A following effort will be the placement of all Civil War pension material in a single packet.

Has the reader had a problem with poor readability of some 1910 census film? There are many other such genealogists. The blame however goes to the Bureau of the Census and not to the Archives. The Archives have not had an original Census book since the 1880 Census was made.

### 1875 Kansas Census indexing

At the Kansas State Historical Society, Topeka, volunteers are nearing completion of the indexing of the 1875 state census. Information is transferred direct from the census book to a card. These cards, filed alphabetically, will be placed in drawers. Kansas had a population of some 528,000 people at that time. It was while doing some research there in May that I became aware of the enormity of the volunteer effort. Mr. Terry Harman of the Society staff said this project began in May 1978. It was his conservative estimate that 12 to 15 persons are contributing some 60 hours per week. Completion is planned for this year-end. Members of the Topeka Society are the principal workers. That constitutes a mountain of volunteerism. There is probably no way to adequately repay them. As for the earlier censuses, WPA did the 1855 and 1860. They also started the 1865 project with the Topeka group finalizing it prior to beginning the 1875.

## The Federation of Genealogical Societies "Newsletter"

As it is a bi-state project this example of volunteer effort is located in the area of national news. Expansion to include the other branches is very likely in the near future. Previously mentioned on p.6 of the Apr.-June '83 Register, I would like to give an update and relate our own experience. On a mid-May visit to the Kansas City Archives Branch two volunteers were working on a Thursday. These two did not seem to have much spare time. On a Friday, one worker was kept quite busy, as they also operate the copying machine. Helpers come from as far as Topeka and St. Joe. That it is a major effort is attested to in a letter from the Administrator, K & Branch, (Mar. p.10). Further testimony is from Fort Worth speech by Dr. Robert Warner, Archivist of the U. S. which says the results are excellent. They hope to expand the effort to the other regional branches. This coupled with the effort at Topeka amount to a vast commitment. Would be nice that President Reagan could hear of it. This is his idea of government. Could be a boon to both genealogy and the Archives. On your next Library visit take a few minutes to read Dr. Warner's speech. Apr.'83 p.108

Senate Bill

S905

Mar.'83

Senator Thomas F. Eagleton of Missouri on March 23rd introduced a new bill to remove the National Archives from the jurisdiction of the General Services Administration. One of the Co-sponsors was our own Senator Nancy Kassebaum. It is again, the time to inform your Senator of your wishes. p. 93

### Interesting publications & research sources

F G S

Mar.'83

CT Connecticut Researcher's Handbook 755 pp.

p.99

Apr.'83

Beginning, series of vital records sources and their availability in the various states.

MD Maryland is the first one of these

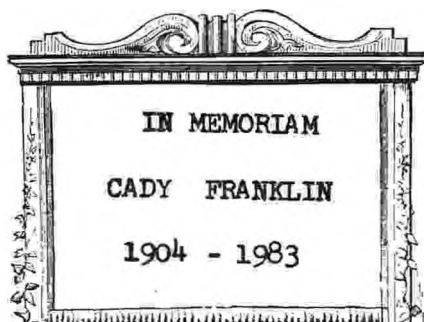
p.112

'Guide to the Draper Manuscripts' 500 pp.

p.113

CT Two pages on available material in Connecticut State Library p.127

Contributed by George I. Gird



In Memory of a faithful member,  
Cady Quick Franklin who passed away  
July 9, 1983, a book will be placed  
in Midwest HGS Library

NEW BOOKS IN THE GENEALOGY DEPT., WICHITA PUBLIC LIBRARY, JANUARY - MARCH, 1983

- R 929.3  
S427B British Aliens in the United States During the War of 1812. - compiled by Kenneth Scott.
- R 929.3  
S427E Early New York Naturalizations; Abstracts of Naturalization Records from Federal, State, and Local Courts, 1792-1840. - compiled by Kenneth Scott.
- R 929.3  
T5650 Oklahoma Marriage Records; Choctaw Nation, Indian Territory, 1890-1896, and Official Credentials, 1890-1894. 4 volumes. - by Ellen Tiffiee.
- R 929.3  
W441B Beaver County, Pennsylvania, Marriages, 1830-1873, from Beaver County Newspapers. - by Mark H. Welchley.
- R 929.3  
W61M Marriages of Wilson County, Tennessee, 1802-1850. - compiled by Edythe Rucker Whitley.
- R 929.3  
W747 Wilson County, Kansas, Estate Records from Probate Judge's Files, 1866 through 1912. Two volumes.
- R 929.3  
W949M Maryland Eastern Shore Newspaper Abstracts. Volume 1. 1790-1805. - by F. Edward Wright.
- R 929.5  
C3944 Cemetery Records of Reno County, Kansas, 1865-1978. - compiled by the Reno County Genealogy Society.
- R 929.5  
C555B Bates County, Missouri, Cemeteries. Two volumes. - by E.J. Christiansen.
- R 929.5  
E64 Epitaphs & Inscriptions of Phillips County, Kansas. - compiled by the Phillips County Genealogical Society.
- R 929.5  
H655 Hillside Cemetery, Sedgwick, Kansas.
- R 929.5  
H892F Forest Park Cemetery, Anthony, Kansas, Harper County. - compiled by W. Monroe Hughbanks.
- R 929.5  
M649I Index to Cemetery Records of Ottawa County, Kansas. - compiled by Marjorie Miller and Lucille O'Brien.
- R 929.5  
N874L Lee County, Mississippi, Cemetery Records, 1820-1979. - compiled by the Northeast Mississippi Historical & Genealogical Society.
- R 929.5  
P665G Grant Township Cemetery, Marion County, Kansas; Northeast of Marion, Kansas, on Highway 150, Formerly Known as Youngtown. - compiled by Ralph & Thelma Piper.
- R 929.5  
H178R Requiem (Ness County, Kansas, cemeteries, as well as some cemeteries from Rush, Hodgeman, Gove, Finney, and Lane Counties). - by Mary L. Hall. Also a Supplement.
- R 929.5  
S672S Sumner County, Tennessee, Cemetery Records. - compiled by Margaret Cummings Snider and Joan Hollis Yorgason.

NEW BOOKS IN THE GENEALOGY DEPT., WICHITA PUBLIC LIBRARY, JANUARY - MARCH, 1983

- R 929.3  
C688E2 English Estates of American Colonists; American Wills and Administrations in the Prerogative Court of Canterbury, 1700-1799. - by Peter Wilson Coldham.
- R 929.3  
C688E3 English Estates of American Settlers; American Wills and Administrations in the Prerogative Court of Canterbury, 1800-1858. - by Peter Wilson Coldham.
- R 929.3  
E123 Early Marriage Records, Labette County, Kansas, Oct. 30, 1867 - April 13, 1878, and May 15, 1880 - March 27, 1881, Extracted from the "Southeast Kansas Independent-Observer, " Oswego, Kansas.
- R 929.3  
G448M Marriages of Monmouth County, New Jersey, 1795-1843. - compiled by George & Florence Gibson.
- R 929.3  
H566D Death Notices as Listed in "Neosho Valley/Hartford Times" and Burials in Hartford Cemetery, Lyon County, Kansas. - compiled by James L. Herrick.
- R 929.3  
H725Mg Marriages of Granville County, North Carolina, 1753-1868. - compiled by Brent H. Holcomb.
- R 929.3  
H725Mr Marriages of Rowan County, North Carolina, 1753-1868. - compiled by Brent H. Holcomb.
- R 929.3  
I68P Pennsylvania German Marriages; Marriages and Marriage Evidence in Pennsylvania German Churches. - compiled by Donna R. Irish.
- R 929.3  
L991 Lyon County, Kansas, Records and Repositories; a List of the Records of Lyon and Some Adjoining Counties of Kansas...
- R 929.3  
ML71M An Index of Marriage Records of Montgomery County, Kansas, May 15, 1870, ...through 1884... - by Jennie K. Macoubrie.
- R 929.3  
M248I Index to Birth and Death Records, Saline County, Kansas, Vital Statistics - A, 1885-1890. - compiled by Mary Maley and Barbara Kollhoff.
- R 929.3  
M416I Index to Marriages of Oklahoma Indian Territory; Compiled from Book One, Atoka, Oklahoma. Volume I. - compiled by Lynda Massey and Clara Nash.
- R 929.3  
MIN  
Oversize Original Land Owners of Osborne County, Kansas. - by Mildred Minear.
- R 929.3  
N618M Mitchell County, Kansas, Probate Case Index. Volume 1. 1870s to 1930. - compiled by F. Lee Nichols.
- R 929.3  
O13M Marriage Records of Ottawa County, Kansas, Book A, 1868-1882. - compiled by Lucille O'Brien.
- R 929.3  
O93M Missouri Marriages Before 1840. - compiled by Susan Ormesher.
- R 929.3  
P242P Personal Name Index to the 1856 City Directories of California. - by Nathan C. Parker.

NEW CENSUS MICROFILMS IN THE GENEALOGY DEPT., WICHITA PUBLIC LIBRARY, APRIL THROUGH  
JUNE, 1983

Arkansas	1840	Roll # 18	Hempstead, Hot Springs, Independence, Izard, Jackson, Jefferson, and Johnson Counties
Arkansas	1850	Roll # 28	Marion, Mississippi, Izard, Monroe, Montgomery, Newton, Ouachita, and Perry Counties
Indiana	1860	Roll # 264	Harrison County
Indiana	1860	Roll # 267	Huntington County
Indiana	1870	Roll # 321	Harrison County
Indiana	1870	Roll # 325	Huntington County
Indiana	1880	Roll # 282	Hancock and Harrison (part) Counties
Indiana	1880	Roll # 283	Harrison (part) and Hendricks Counties
Indiana	1880	Roll # 285	Howard (part) and Huntington Counties
Indiana	1900	Roll # 378	Huntington and Jackson (part: E.D.'s 64-73, and E.D. 74, sheets 1-30) Counties
Indiana	1910	Roll # 356	Howard (part: E.D.'s 120-136) and Huntington Counties
Kansas	1915	Roll # 122	Lane County, Leavenworth County (Basehor, Easton, Fairmount, Lansing, Leavenworth - Wards 1 and 2 [part])
Kentucky	1840	Roll # 113	Hancock, Hardin, Harlan, Harrison, and Hart Counties
Kentucky	1860	Roll # 383	Logan, Lyon, and McCracken Counties
Michigan	1860	Roll # 551	Lenawee County
Missouri	1910	Roll # 773	Caldwell, Douglas, and Cooper Counties
Missouri	1910	Roll # 781	Franklin (part: E.D.'s 60-68), Gentry, Gasconade, and Greene (part: E.D.'s 16-18, 57-64) Counties
Missouri	1910	Roll # 782	Greene (part: E.D.'s 19-56, 188, 189) Counties
New York	1850	Roll # 609	Warren County
Ohio	1870	Roll # 1239	Mahoning County
Oklahoma	1900	Roll # 1335	Beaver, Blaine, and Canadian Counties
Oklahoma	1900	Roll # 1336	Cleveland, Custer, Day, and Garfield Counties
Oklahoma	1900	Roll # 1337	Dewey, Grant, and Greer Counties
Oklahoma	1900	Roll # 1338	Kay and Kingfisher Counties
Oklahoma	1900	Roll # 1339	Lincoln and Logan Counties
Oklahoma	1900	Roll # 1340	Noble and Oklahoma Counties
Oklahoma	1900	Roll # 1341	Pawnee, Roger Mills, and Payne Counties
Oklahoma	1900	Roll # 1342	Pottawatomie and Washita Counties
Oklahoma	1900	Roll # 1343	Woods County (part: E.D.'s 212-236, and E.D. 237, sheets 1-3)
Oklahoma	1900	Roll # 1344	Woods (part: E.D. 237, sheet 4-end) and Woodward Counties; Oklahoma Territory Indian Reservation; Indian and Military and Naval
Oklahoma	1910	Roll # 1242	Adair, Alfalfa, Atoka, and Beaver Counties
Oklahoma	1910	Roll # 1243	Beckham, Blaine, and Bryan (part: E.D.'s 13-18) Counties
Oklahoma	1910	Roll # 1244	Bryan (part: E.D.'s 19-34), Cherokee, and Caddo (part: E.D.'s 46, 47) Counties
Oklahoma	1910	Roll # 1245	Caddo (part: E.D.'s 48-70) and Cleveland Counties
Oklahoma	1910	Roll # 1246	Canadian and Carter Counties
Oklahoma	1910	Roll # 1247	Choctaw, Cimarron, Coal, and Comanche (part: E.D.'s 35-37, 40) Counties
Oklahoma	1910	Roll # 1248	Comanche (part: E.D.'s 38, 39, 41-69) and Craig (part: E.D.'s 24-27) Counties

NEW CENSUS MICROFILMS IN THE GENEALOGY DEPT., WICHITA PUBLIC LIBRARY, APRIL THROUGH JUNE, 1983

Oklahoma	1910	Roll # 1249	Craig (part: E.D.'s 28-37), Harper, and Creek Counties
Oklahoma	1910	Roll # 1250	Custer, Delaware, and Dewey Counties
Oklahoma	1910	Roll # 1251	Ellis and Garfield Counties
Oklahoma	1910	Roll # 1252	Garvin and Grady (part: E.D.'s 89-106) Counties
Oklahoma	1910	Roll # 1253	Grady (part: E.D.'s 107-111), Grant, Greer, and Harmon Counties
Oklahoma	1910	Roll # 1254	Haskell, Jefferson, and Johnston Counties
Oklahoma	1910	Roll # 1255	Hughes and Jackson Counties
Oklahoma	1910	Roll # 1256	Kingfisher and Kay (part: E.D.'s 52-66) Counties
Oklahoma	1910	Roll # 1258	Latimer (part: E.D.'s 141-144), Le Flore, and Lincoln (part: E.D.'s 88-90) Counties
Oklahoma	1910	Roll # 1259	Lincoln (part: E.D.'s 91-116) and Logan (part: E.D.'s 117-120, 137, 141) Counties
Oklahoma	1910	Roll # 1260	Logan (part: E.D.'s 121-136, 138-140, 142) and McIntosh Counties
Oklahoma	1910	Roll # 1261	Love, McClain, and McCurtain Counties
Pennsylvania	1850	Roll # 839	York County (part)
Pennsylvania	1850	Roll # 840	York County (part)
Pennsylvania	1860	Roll # 1064	Allegheny County (part)
Pennsylvania	1860	Roll # 1065	Allegheny County (part)
Pennsylvania	1900	Roll # 1371	Allegheny County (part: E.D.'s 483-516)

NEW BOOKS IN THE GENEALOGY DEPT., WICHITA PUBLIC LIBRARY, APRIL THROUGH JUNE, 1983

Phillips County, Kansas, 1875 State Census, Alphabetized.  
 1880 Census of West Virginia, Compiled Alphabetically by Counties. Volume 4. Braxton, Clay, Nicholas, Fayette, Raleigh, Wyoming Counties.  
 (The above books are shelved alphabetically by state on the census shelves.)

R 016.929 UNI	Guide to Genealogical Research in the National Archives.
R 016.9741 M225P	Public Record Repositories in Maine.
R 016.9775 091G	Guide to Archives and Manuscripts in the University of Wisconsin - Platteville Area Research Center. - compiled by Kathryn Otto.
R 285.8 M248P	Plymouth Congregational Unitarian Church, Salina, Kansas, Records from 1888 to 1940. - compiled by Mary Maley and Barbara Kollhoff.
R 912.773 R156B	Bicentennial Plat Book of Perry County, Illinois, 1853. - compiled by Genevieve Rainey.
R 929.2 H631H	Slave Girl Reba; Her Descendants in America (Hicks family history). - by Nora Louis Hicks.
R 929.3 C297I	Index to the 1880 Mortality Schedule of Kansas. - compiled by Thelma Carpenter and Helen Franklin.
R 929.3 C518R	Register of the Trinity Congregation of the Reformed Church of Cheney, Kansas (now the Trinity United Church of Christ).

## BOOK-REVIEWS

The following reviews are of books which have been contributed to the ME&GS Library by individuals and are for sale by the Contributor.

WRITE IT RIGHT by Donald Ray Barnes and Richard S. Lackey. It is a manual for writing family histories and genealogies. "The joy of sharing through compiling of data and writing an article or book, requires that a genealogist learn to present the data amassed over the years in a clearly understood format." The book concentrates on how to write. It contains 138 pages, including chapters on Preparing to write; Numbering systems for genealogies; Writing the Text. etc. which will assist one in putting a family history in correct form. There is a Table of Contents, glossary of terms and an Index. It is printed in large print and easy to understand.

Price is \$6.00 plus \$1.00 for mailing (5¢ tax in Md.) Order from D.R. Barnes Associates, Box 5755, Rockville, Md. 20855

- - - - -

MELROSE, KANSAS 1891-1983 by Donna M. Fry, Rt. # 1, Box 172, Chetopa, Ks. 67336

128 pages including a Surname Index, Table of Contents and street maps of Melrose and Nine Chapters about this Cherokee County town in Southeast Kansas. The book is attractively arranged, containing many photos of students, early day pioneers of the community, home and businesses. There are many, many names of citizens, a summary of happenings and family stories, including a list of Civil War Union soldiers from Melrose. Much time and thought has gone into the writing and publishing of this book. It may be purchased by writing Donna M. Fry and including \$10.00--pp .

GENEALOGY TODAY - The Newspaper for Genealogists is published bi-weekly by Genealogy Today Publishing Co., 2815 Clearview Place #400. (\$1.50 per issue.) Atlanta, Ga. Subscription price \$26.00 per year.

This 24 page newspaper includes 10 pages of Surnames contributed by paid advertisers and a section called Your Ancestors from subscribers. There are articles about Computer/Genealogists; Computer/Time Span, etc.; Book reviews from Societies and family genealogies contributed by individuals; "Using Land Records"; Czech Research, and similar articles in this issue. The print is large and easy to read.

### THE HARDESTY FAMILY IN AMERICA

by Irma Hardesty Wesley - PUBLISHED by the author, 1981

This book is organized into four sections. Section I, contains two parts--before James Hardesty, 1797-1897 and after James Hardesty. This section includes notes on the history of Calvert and St. Marys Counties of Maryland. Section II has information on the families of Adkisson, Boone, Edelin, Jarvis, Livers, Medley, Rhodes, Sherrill, Tyler and Williams. Section III is made up of photographs, photostats of excerpts from magazines and books, newspaper clippings, maps, letters, etc.

Section IV, includes other Hardesty lines, in different format, ranging from photostats of printed data and newspaper articles, family group sheets, Bible records as submitted by each family.

"This books represents 33 years of certified research for documentation."

The price is \$25.00 pp.-Write to Mrs. Ralph N. Wesley, 1414 Lilac Road, Charlotte, N.C. 28209 Review by Dorothy Weede Bethe)

# QUAKER MONTHLY MEETINGS IN KANSAS

Monthly and Preparative Meetings: Prepared by Helen Wood, Curator  
Collection Quaker Friends University

Indexed as to counties in Kansas. Dates given are from establishment to discontinuance; change of name (as indicated by an \*); or continuing to 1980 (as indicated by a dash following 1st date) Meetings are also indicated as having records in the Yearly Meeting archives or with no records there.

COUNTY	MEETING	DATE
KS. ALLEN CO.	LaHarpe M.M. rec.	1903-1921
bounded by	Carmel M.M. no rec.	1885-98
N: Anderson	Geneva M.M. no rec.	1876-1893
E: Bourbon	Long Creek Prep only no rec.	1881- ?
S: Neosho	Olivet Prep only no rec.	1885- ?
W: Coffey	Salem Prep only no rec.	1882- ? cot 1/4
KS. BARBER CO.	Bethel M.M. no rec.	n. d.s
bounded by		
N: Pratt		
E: Kingman & Harper		
S: Oklahoma		
W: Comanche & Kiowa		
KS BARTON CO.	Beaver M.M. rec.	1924-
bounded by	Bethel M.M. rec.	1893-1910
N: Russell	Calvary M.M. rec.	1894-1924
E: Ellsworth	Hoisington M.M. rec.	1896-1905
S: Stafford & Rice	Great Bend M.M. no rec.	1965-
W: Rush & Pawnee		
KS. BROWN CO.	Highland M.M. no rec.	1894-1900
bounded by		
N: Nebraska		
E: Doniphan		
S: Atchison & Jackson		
W: Nemaha		
KS. BUTLER CO.	Logan M.M. rec.	1908-1914
bounded by	Rose Hill M.M. rec.	1877
N: Marion & Chase		
E: Greenwood & Elk		
S: Cowley		
W: Sedgwick & Harvey		
KS. CHASE CO		
bounded by		
N: Morris	Fruitland M.M. rec.	1863-1913
E: Lyon & Greenwood	Homestead M.M. rec	1886
S: Butler & Greenwood	Toledo M.M. rec.	1865-1912
W: Marion	Vernon Prep. only no rec.	1871
	Walnut Grove M.M. rec.	1913-38

CONTINUED next page

QUAKER MONTHLY MEETINGS IN KANSAS Continued:

KS. CHEROKEE CO.

N: Crawford	Fairfield Prep	1870-
E: Missouri	Spring River M.M. rec.	1867-96
S: Oklahoma	Spring River M.M. no rec.	1927-34
W: Labette	Lowell M.M. rec.	1895
	Lightning Creek no rec.	
	Spring River 1/4	1872-1891
	(name of Fairfield Prep to Lightning Creek)	
	Tennessee Prairie M.M.	
	no rec.	1935-
	Timbered Hills no rec.	1863-1926
	Timbered Hills M.M. no rec.	1933-36

KS. CHAUTAUQUA CO.

BOUNDED BY

N: Elk	St Charles M.M. rec.	1896-1900
E: Montgomery		
S: Oklahoma		
W: Cowley		

KS. COFFEY CO.

bounded by

N: Osage	Center Hill M.M. rec.	1883-1908
E: Franklin & Anderson	Hartford Prep only no rec.	1883- ?
S: Woodson		
W: Greenwood & Lyon		

KS. COMANCHE CO.

bounded by

N: Kiowa Co.	Prairie Vale M.M. rec.	1898-1962
E: Barber	Coldwater M.M. no rec.	1962-
S: Oklahoma		
W: Clark Co.		

KS. COWLEY CO.

bounded by

N: Butler	Arkansas City M.M. no rec.	1954
E: Elk & Chautauqua	Timber Creek no rec.	1935-in archives
S: Oklahoma	(book in Quaker Collection "History of Upper Timber Creek School"	
W: Sumner	has abstracts FQ F 687 C8S6	

KS. DECATUR CO.

bounded by

N: Nebraska	Pleasant Valley rec.	1887-1901
E: Norton Co.	near Dec. Co.	
S: Sheridan		
W: Rawlins Co.		

KS. DICKINSON CO.

bounded by

N: Clay	Carlton M.M. rec.	1886-1891
E: Geary & Morris		
S: Marion		
W: Saline & Ottawa		

QUAKER MONTHLY MEETINGS IN KANSAS Continued:

KS DOUGLAS CO.

bounded by

N: Jefferson	Hesper M.M. rec.	1883-
E: Leavenworth & Douglas	Lawrence M.M. rec.	1867
S: Franklin	Springdale M.M. rec.	1856-1916
W: Osage & Shawnee	Springfield M.M. rec.	1864-1883

KS ELK CO.

bounded by

N: Greenwood	Oak Valley no rec.	1888-1906
E: Wilson & Montgomery	Elk R. 1/4	
S: Chautauqua		
W: Cowley & Butler		

KS Finney Co.

bounded by

N: Scott	Garden City M.M. rec.	1896-1916
E: Hodgeman		
S: Gray & Haskell		
W: Kearney		

KS FRANKLIN CO.

bounded by

N: Douglas	Spring Grove M.M. rec.	1860-
E: Miami	Lane Prep only no rec.	1871
S: Anderson		
W: Coffey & Osage		

KS GOVE CO.

bounded by

N: Sheridan & Thomas	Union M.M. no rec.	1893-1898
E: Trego		
S: Ness and Lane		
W: Logan		

KS HAMILTON CO.

bounded by

N: Greeley	Coolidge M.M. rec.	1888-1896
E: Kearney	Medway M.M. rec.	1896-1902
S: Stanton	Bethel M.M. outpost? no rec.	
W: Colorado		

KS HARVEY CO.

bounded by

N: McPherson & Marion	Fairview M.M. rec.	1868-1889
E: Marion & Butler	Maplewood Prep only no rec	1874- ?
S: Sedgwick	Pleasant Hill Prep only no rec	1875-81
W: Reno	Pleasant Valley Prep only no rec.	1877

KS JEFFERSON CO.

bounded by

N: Atchison	Rock Creek M.M. rec.	1896-1901
E: Leavenworth		
S: Douglas		
W: Shawnee & Jackson		

To be Continued in next issue.

## GETTING STARTED IN COMPUTER GENEALOGY

Barbara R. Marsh

Computers are a wonderful tool for the genealogist. What better way to keep track of your family records and, most of all, to be able to locate a particular person with a few minutes spent at a computer keyboard. Computers can also be used to index cemetery and marriage records, names on plat maps, and if you have a printer, print pedigree charts and family group sheets.

If you are thinking of getting a personal computer, the profusion of computers and software programs available in the marketplace not only has newcomers confused but even professionals in the industry. To make matters more frustrating, there is also a difference in opinion on which is more important, the hardware [computer—for the newcomer this is comparable to a record player] or the software [computer programs—comparable to a phonograph record]. Newcomers should be aware that all programs can't be run on all computers because different computers have different operating systems. As a general rule, you can't run IBM PC software on a TRS-80 computer, and you can't run Apple software on a computer with a CP/M operating system.

Personal computers come in all sizes including desktop, portable, and notebook, and vary in price from one hundred to several thousand dollars. Although word of mouth has always provided some help in selection, there is a bimonthly publication, GENEALOGICAL COMPUTING, which is highly recommended for those interested in genealogy and the computer. This periodical offers aid in purchasing a computer for genealogy, what genealogical programs are available for your particular computer, what's new in the field, and personal experiences and programs written by subscribers. GENEALOGICAL COMPUTING is priced at \$20 a year or \$4 for a single copy. Order from: Data Transfer Associates, Inc., 5102 Pommeroy Drive, Fairfax, VA 22032. Other publications include a new magazine, GENEALOGICAL COMPUTER PIONEER, which can be ordered from Fosey Enterprises, PO Box 338, Orem, UT 84057 for \$15 a year or \$4.25 per single copy; and the biweekly genealogical newspaper, GENEALOGY TODAY, which includes features on computers, priced at 12 issues for \$15 or 24 issues for \$26 from GENEALOGY TODAY, 2815 Clearview Place, Atlanta, GA 30340.

Genealogy programs available for computers are currently in short supply. A good program should at least be able to print family group sheets and pedigree charts, search for surnames, and index listings such as ancestors and descendants. Two of the more popular programs at this time are ROOTS/M and FAMILY ROOTS. As these are expensive programs, priced at slightly under two hundred dollars each, it would be wise to write for brochures and samples before buying. Order ROOTS/M brochures from Commsoft, 665 Maybell Ave., Palo Alto, CA 94306, and FAMILY ROOTS brochures from Quinsept, Inc., PO Box 219, Lexington, MA 02173.

Other programming options include writing your own programs or finding someone who will share their written programs with you. If you can't physically use a computer but want to be involved, perhaps you can find a friend who would be willing to put your genealogy on a diskette or cassette for you.

\* \* \*

Presently MHGS is initiating a file of computer owners so if you have any questions, write to MHGS, ATT: COMPUTERS, and we'll get you some help.

## SEDGWICK COUNTY, KANSAS

NAME	ACRES	CERT. NO.	DATE	VOL.	PAGE
Bell Anderson	160	5682	3/29/75	11	434
Alber Barlow	160	3008	4/24	12	492
Nancy Ann Barnett	160	6362	6/15	13	162
Isaac Barnett	160	6369	5/25	13	161
Silas Bliss	146	4149	4/21	7	500
Hezekiah Boone	95	2218	3/20	4	302
Byron Brown	160	4212	2/18	8	354
Frank P. Brown	160	2497	4/14	12	486
David Brownlee	160	4199	3/4	8	343
J. Campbell	160	628	3/24	8	60
Jonathan Carson	160	4308	5/22	8	455
Worth Chambers	160	5732	6/10	11	476
Ingree Christian	158	5446	5/17	12	35
Henry Coffee	160	1885	3/12	3	429
Lewson Conley	160	1410	3/11	3	380
Helen E. Cook	160	5378	4/21	11	94
George Cramer	160	1969	4/15	8	169
William Creeks	160	6032	5/29	12	309
John C. Custy	160	1652	3/17	3	451
Charles G. Davis	160	5882	4/20	12	167
Alexander DeVeir	160	5880	4/20	12	165
Almon E. Dodge	160	553	2/-	8	29
F. A. Dodge	158	516	2/18	7	3
William E. Dodge					
Samuel Eby	160	1482	3/3	3	398
Edw. D. Estill	160	5805	4/10	12	509
William G. Estill	160	5806	5/10	12	77
David Farmer	149	1225	4/19	3	339
J. B. Fenton	160	346	4/24	3	26
John Forsyth	139	6325	4/30	13	126
Alexander Gard	160	6427	6/15	13	222
Edwin Gee	160	4050	4/13	7	413
Joseph Gifford	172	362	5/27	3	36
John Gorman	153	4366	5/22	9	31
Charles R. Gray	160	5881	4/20	12	166
Gottlieb Grebe	158	3025	5/19	12	503
Levi M. Hall	160	2363	3/2	4	427
Philip Haynes	160	1643	5/5	3	448
Hiram Henderson	160	5456	5/29	11	218
T. W. Hill	160	2099	5/12	4	215
M. C. House	159	1277	3/10	3	352
John W. James	160	5707	4/19	11	455
Charles Jenkins	160	1378	3/11	3	367
William M. Johnson	139	4888	2/12	10	9
Harrison Keith	160	5954	3/16	12	237
John Kein	160	1260	3/3	3	348
J. C. King	160	1011	3/25	11	152
James Lappin	160	4291	5/11	8	440
Albert Law	73	3608	5/8	11	179
Harry A. Laurie	160	5115	5/31	10	380
Daniel Lyday	160	5582	3/12	11	342
David C. McGillen	160	4939	3/16	70	141

Continued to page 68

# LAND PATENT DEEDS

Continued:

NAME	ACRES	CERT. NO.	DATE	VOL.	PAGE
James P. McGovney	160	5815	3/12/75	12	105
Maria C. Marrill	160	3099	3/2	7	53
Charles M. Miles	160	5227	5/3	12	31
James H. Moler	160	5785	2/23	12	80
Samuel H. Moffett	160	4975	2/20	10	172
William H. Newton	168	359	4/22	3	34
George Norcutt	158	4545	2/16	9	132
Jack Oescher	123	2369	3/8	4	433
Flanders Osborn	169	519	2/16	8	10
Horatio M. Owen	160	413	5/8	9	237
Samuel H. Pate	160	672	4/2	1	435
Alexander H. Pease	157	4928	2/22	9	505
John Powell	160	5850	5/13	12	137
Walter S. Pratt	80	659	2/9	1	439
William Pray	160	2328	5/21	14	370
Augustus Pruitt	159	6426	6/3	13	221
J. H. Purviance	80	348	4/24	3	27
George E. Richmond	160	4516	4/27	9	311
Smith Riley	138	6188	5/4	12	100
James M. Rogers	160	6108	4/30	12	382
John L. Ross	160	1089	2/20	9	7
Daniel K. Short	80	656	2/15	1	428
John M. Smith	160	6453	6/2	13	247
Jacob Sohn	160	2948	4/15	5	193
T. J. Spohn	160	1051	2/20	8	136
- T. Stroup	155	607	2/27	11	503
Lafayette Stewart	88	613	5/8	1	472
Henry Symons	148	271	3/12	3	5
Isaac Thrush	80	665	3/22	1	433
Lydia Ann Watson	160	4878	2/22	10	124
James H. White	160	1088	3/2	9	45
David Wilson	160	6112	3/27	12	386
Jeremiah Wilson	160	5980	3/10	12	285
James P. Williams					
G. W. Zenner	160	1968	3/25	11	156

## FIGURING BIRTH DATES FROM TOMBSTONES

Write death date on oneline and the Death  
year, month and day age directly below. Age  
Simple subtraction of all columns.

Year	Month	Days
1842	5	25
36y	2m	10 d
1806	3	15

born 15 Mar. 1806

This requires months to be taken from the  
year to provide a figure from which the Death  
age months can be deducted. Age

1842	1	5	17	25
60y		8m		5d
1781		9m		20

born 20 Sept. 1781

This example requires that both months  
and days be taken from the years and Death  
months to provide for deductions. The Age  
adjustments required to provide for de-  
ductions must be taken as 10 days when borrowing from the months figured and  
as 12 months from the year figure. Figure the days first, months, second  
order to avoid error.

1842	1	5	16	25	55
45y		8m		28d	
1796		8		27	b27 Aug, 1796

SEDGWICK COUNTY MARRIAGES, 1887/Continued -Book C

<u>Page</u>	<u>Groom/Bride</u>	<u>Age</u>	<u>Residence</u>	<u>Date</u> 1887	<u>Person Officiating</u>
621	MAYBERRY, Thomas L.	24	Sedgwick Co. Ks.	Mar. 29	I. H. Fuller Min.
	Katie B. HAMILTON	15	" " "	Mar. 30	
633	MCKINLEY, James Zoda	27	Wichita, Ks.	Apr. 25	W. W. Thomas P. Jdg.
	Mattie M. HEPHNER	23	" "	Apr. 26	
634	OVERTON, Harry	22	Wichita, Ks.	Apr. 26	W. W. Thomas P. Jdg.
	Mollie WOOD	19	" "		
629	PEAVEY, Moses T.	63	Wichita, Ks.	Apr. 13	N. E. Harmon Min.
	Jane ACUFF	45	" "	Apr. 14	
637	PRICKETT, P. R.	25	Stafford, Ks.	Apr. 30	W. A. Van Gundy Min.
	Minnie HUFFMAN	23	Valley Center, Ks.	May 1	
623	RENSHAW, Benjamin T.	21	Wichita, Ks.	Apr. 4	W. W. Thomas
	Mary A. McCARTY	20	" "	Apr. 10	
615	SCHEPPER, Henry	31	Sedgwick Co. Ks.	Mar. 22	W. W. Thomas
	May BAKER	30	" " "		Not completed
632	SLAGER, W. E.	27	Wichita, Ks.	Apr. 25	Rev. W. S. Payne
	Nellie READEN	20	" "		
638	SMITH, E. F.	21	Sedgwick Co. Ks.	Apr. 30	S. L. Barrett J. P.
	Maggie A. BUCKINGHAM	20	" " "		
636	SMITH, John C.	21	Wichita, Ks.	Apr. 27	W. W. Thomas P. Jdg.
	Bertha STEVENS	18	Bloomington, Ill.		
631	SOWLE, C. H.	42	Sedgwick Co. Ks.	Apr. 23	H. W. Everest
	M. F. McCORMICK	33	" " "	Apr. 24	
629	SWANEY, J. W.	26	Derby, Ks.	Apr. 14	J. D. Woods
	Minnie B. CRAWFORD	20	" "		
627	THOMPSON, R. A.	25	Sedgwick Co. Ks.	Apr. 11	H. Winslow Abbett.
	Ida L. CRANE	18	" " "	Apr. 13	
627	WALKER, Charles E.	34	Harper Co. Ks.	Apr. 12	W. W. Thomas P. Jdg.
	Sarah E. HASTY	28	Knox Co. Indiana		
618	WEIGAND, C. H.	21	Wichita, Ks.	Mar. 26	J. F. Nessly
	Cora M. DABERTZ	17	" "	Mar. 27	
625	WHITE, C. C.	32	Wichita, Ks.	Apr. 9	W. W. Dorman Min.
	Dosia REECE	23	Goddard, Ks.		
617	WHITE, John W.	22	Butler Co. Ks.	Mar. 26	S. S. Wallace Min.
	Mystie E. LONGSTRETH	19	Sedgwick Co. Ks.	Mar. 27	
619	WHITEHEAD, John D.	25	Cheney, Ks.	Mar. 29	J. F. Poe J. P.
	Miney BEVIS	23	" "	Apr. 3	
631	WILSON, Charles	22	Wichita, Ks.	Apr. 23	Rev. R. Bevely
	Mollie LAWS	20	" "		
615	WILSON, Peter	25	Kingman Co. Ks.	Mar. 22	T. S. Hodgson
	Alice A. STALEY	23	Sedgwick Co. Ks.		
623	WRIGHT, Amos	22	Sedgwick Co. Ks.	Apr. 25	D. E. Boone J. P.
	Ella DAVIS	19	" " "		

BOOK D - 1887

23	ALLEN, Frank	32	Wichita, Ks.	June 2	W. W. Thomas P. Jdg.
	C. Jennie PEARSON	30	" "		
27	BAILEY, Oscar P.	32	Wichita, Ks.	June 7	Chas J. Adams Rector
	Josie A. TENBRINK	22	" "		St. Johns
22	BRENTLINGER, W.C.	22	Wichita, Ks.	June 2	J. F. Nessley
	Jennie E. BARRETT	18	" "	June 4	
9	BROWN, I. C.	29	Wichita, Ks.	May 14	W. F. Walker J.P.
	Mary A. FIELDS	22	" "	May 15	
6	COLLINS, R. F.	36	Wichita, Ks.	May 10	D. D. Akin Min.
	Minervie W. GARNETT	23	" "		

Continued to page 66

SEDGWICK COUNTY MARRIAGES , 1887/Continued - Book D

Page	Groom/Bride	Age	Residence	Date 1887	Person Officiating
21	LEHNER , Frank	28	Wichita, Ks.	May 31	W. W. Thomas P. Jdg.
	Sarah PRESSBERGER	26	" "		
3	M <sup>C</sup> DIVETT, S.	43	Wichita, Ks.	May 6	E. J. Brown
	Ella Jane TUDORS	18	" "	May 8	
26	M <sup>C</sup> LEAN, B. F.	27	Wichita, Ks.	May 17	J. D. Hewett
	J.C.(Julie)BARWISE	20	" "	May 18	
4	MEFFORD, J. W.	25	Wichita, Ks.	May 8	W. W. Thomas P. Jdg.
	Clara DOPAY	24	" "		
11	MING, William	48	Wichita, Ks.	May 17	N. E. Harmon Min.
	Ellen DILLETT	32	" "		
1	NEWMAN, E. A.	28	Little Rock, Ark.	May 2	T. S. Hodgson
	Florence HINTON	24	Wichita, Ks.		
13	PARKER, Sydney	26	Wichita, Ks.	May 21	John C. Post Min.
	Inesa COURTNEY	17	" "	May 22	
8	PENIWELL, J. C.	40	Wellington, Ks.	May 11	O. W. James
	Mary BUCK	19	Clinton, Ill.		
7	RODE, Joseph	20	Wichita, Ks.	May 11	Rev. John Loevenich
	Flora(Victoria) HAGER	20	" "	May 23	
3	RUSH, James F.	27	Wichita, Ks.	May 7	Samuel W. Richards
	Julia A. HUNSAKER	30	Wellington, Ks.		Min.
22	RUSSELL, W. G.	29	Kinsley, Ks.	June 2	Rev. W.B. Hendryx
	Mary CARWOTHER	21	Wichita, Ks.		
28	SHEPHERD, Charles	25	Sedgwick Co. Ks.	June 7	W. Y. Goodrick
	Anna DUNN	17	" "	June 11	
25	SHIPMAN, A. W.	22	Bulter Co., Ks.	June 4	Rev. John Eastwood
	Vica BEADLE	22	Sedgwick Co. Ks.	June 12	
24	SHULTZ, William	32	Wichita, Ks.	June 1	D. T. Braddus Min.
	Alice WAYLRIGHT	26	" "	June 4	
19	SMITH, W. T.	24	Valley Center, Ks.	May 29	W. Y. Goodrick
	Emma STIVER	18	" " "		
28	SNIVELY, W. A.	23	Wichita, Ks.	June 8	R. W. Hunt Min.
	Ada O. NORRIS	20	" "		
2	SPAUN, H. C.	37	Wichita, Ks.	May 5	John C. Post Min.
	Jennie SPAUN	25	" "		
8	SPENSER, W. C.	23	Marion Co. Ks.	May 13	W. W. Thomas P. Jdg.
	Mary Ella JENNINGS	16	Sumner Co. Ks.		
4	STAGE, I. M.	27	Wichita, Ks.	May 9	Chas J. Adams Min.
	Ella F. KELLOGG	22	" "	May 10	
5	STEPLETON, J. O.	40	Wichita, Ks.	May 9	J. M. Monroe Min.
	Matilda SPARKS	29	" "		
21	SWENTZELL, William	29	Wichita, Ks.	June 1	W. F. Harper
	Ida E. STRUBLE	23	" "		
17	WHITE, W. S.	-	Wichita, Ks.	May 27	W. W. Thomas P. Jdg.
	Susan SEBASTIAN	-	" "		
18	WILLIAMS, J. A.	49	Wichita, Ks.	May 27	Chas J. Adams Rector
	Ella DRAKE	32	" "		St. Johns Church
16	WODRING, Daniel	30	Waco Twp.	May 25	W. W. Thomas P. Jdg.
	Mary NAUGHTER	25	" "		

Compiled by Mae Chaney

From what location did Confederate sharpshooters fire at Little Round Top? answer Devil's Den

## BUTLER COUNTY, KANSAS

This issue we will 'spot light' Butler County, Kansas, the largest county in the State in spite of changing its shape and size five times. Butler County was created in 1855 and El Dorado was named the County Seat. It was named for Andrew Pickens Butler, a Senator from South Carolina. As a States Right Democrat, he was held in high regard by the Bogus Legislature(Ks.). That Republican Kansas should continue to honor a States Right Democrat seemed inconceivable but due to a mistaken assumption that the County was named for a Civil War (Union) General Ben Butler by many was probably the reason it remained unchanged.

Butler County is bounded by Sedgwick and Harvey Counties on the West, on the North by Marion and Chase Counties, on the East by Greenwood and Elk and by Cowley County on the south.

Large oil fields which produced almost 10% of the oil in the United States during World War I, Oil Refineries and related businesses brought economic wealth to the county. Farming is a major industry, also.

When C.N. James moved from Missouri to Kansas, he is reported to have had only 10¢ in his pocket. He maintained financial solvency- teaching school for \$5.00 per month. He gave this up to establish a trading post above the Junction of the Whitewater and Walnut Rivers in Butler County. When he established his trading post, he became Postmaster. He named his town Augusta for Augusta C. Boynton, the Wisconsin girl he married.

The town named Douglass located south of Augusta was not named for the politically famed (Stephen A.) Douglas but for a Butler County farmer, Captain Joseph W. Douglass, a native of New York, who owned the land on which he started the town and where he served as Postmaster.

---

Eastern Butler County is in the western edge of the Flint Hills. Pastures & grazing land made the cattle ranchers' big business'. Cassody in northern part of County is known for its Cattle Pens for receiving and shipping the livestock. Other communities are Whitewater, Potwin, early oil refinery, Rosalia and Latham to name a few.

### BUTLER COUNTY NEWSPAPERS OF EARLY YEARS

The Walnut Valley Time founded 1870 by Thomas Benton Murdock, brother of Col. Marshall M. Murdock founder of the Wichita Eagle. From March 1881 to 1911 it was owned and edited by Alvah Sheldon and from 1911 to 1917 by Chester C. Sheldon. For two years a J.B.Adams owned the paper and in 1919 it was sold to the Times Publishing Co and Mr. Rolla A. Clymer.

The El Dorado Republican was founded in 1883 by Thomas Benton Murdock after selling the Walnut Valley Times. Mr. Murdock died 1909. His wife Marie A. published it until 1919 and sold to the Times Publishing Company.

---

NAMING SYSTEMS: Two..Dutch and German..

Dutch:

First son for paternal grandfather

Second son for maternal grandfather

First girl for maternal grandmother

Second girl for paternal grandmother

German:

Used a middle name

Sons--father and male baptismal sponsor

Girls--Mother and female baptismal sponsor

Thus--If father's name is John, you have

John Phillip or John George--or girls

Anna Mary, Anna Helen, Anna Margaret.

Many nationalities adopted this system. Often Christian first names, meaning the same were spelled differently. Example: Hans or Johannes for John.

## BOOM TOWN

This is a story of an oil boom town named Midian which was the name given to a railroad siding four miles west of El Dorado, Butler County, Kansas. The finding of oil on their land has been the dream of landowners for many years. Let there be some drilling for oil in the vicinity, the pulse quickened, interest increased and excitement grew as hope and the dream "maybe they will find oil" would happen. It was like finding the pot of gold at the foot of the rainbow.

The name Midian came from the Bible--nomads or people searching for a home were called Midians. When the Missouri-Pacific Railroad established a passing track to avoid delays, one of the crew suggested the name "Midian". Walter A. Mooney, Claim Agent for the Missouri-Pacific, proposed the name. Both these men were members of the Midian Shrine Temple recently established in Wichita.

The first well drilled in Butler County that was commercially productive was a gas well drilled near Augusta in 1906. There was sufficient gas to supply the townspeople and businesses.

This inspired El Dorado to look for gas in its vicinity. Two attempts were made without success. In 1914 oil was discovered at Augusta, causing El Dorado to make a third attempt. A meeting was called by six men from El Dorado to ascertain if there was enough public interest to continue the search. They were E. D. Stratford, C. E. Florence and Lee Scott representing the City Council. The others were C. H. Selig, A. J. Holderman and Charles Ewing. They decided to proceed and hired Dr. Erasmus Haworth, geologist and professor at Kansas University, to make a field examination. Up to this time "witching" (pointing to a spot to start or "spudding in") had been the practice to locate a spot to drill.

On December 19, 1914, drilling began on the Fowler land near Midian. This created much excitement and speculation in buying and selling of leases, but it proved unsuccessful.

Another attempt for the City of El Dorado was started in September 1915 by the Wichita Natural Gas Company on the John Stapleton farm  $3\frac{1}{4}$  miles northwest of town and named Stapleton No. 1. On October 15 at 542 feet, oil was discovered. This was the beginning of the El Dorado Field. The big pay was found in December 1915 with a production of 175 barrels per day.

The oil crowds flocked to the area and the rush was on. The speculators, lease hunters and all of El Dorado smelled money. The price of land and leases began increasing. Arrangements for most leases were made between the landowner signing a lease allowing the oil company to drill for gas or oil. The owner would receive  $1/8$  of the earnings. Sometimes he would be paid a cash bonus when the agreement was closed.

People came by the hundreds. They moved into tents first. Then they built shacks using lumber thrown away around the rigs. The first family that arrived lived in a boxcar. Later more permanent homes were built by the oil companies.

Midian was an oil-company town built by Cities Service Petroleum Company and Gulf Oil Company. Two other oil companies, Standard and Sinclair, had a part in the boom town. They provided for most of the needs of the people living in the town. First a boarding house was built for single men. They were long structures with bunks for sleeping and plenty of room for eating. They built a model home which was furnished with the price of furniture posted to discourage unscrupulous

Continued on page 73

**Boom Town continued:**

furniture dealers. Houses were built for each family as fast as crews could put them up. Sanitary conditions were enforced--all animals were prohibited due to odor and fly nuisance. A doctor, nurse and emergency hospital were maintained. The nurse instructed mothers in the duties of motherhood and wives in cooking and housekeeping. Good citizenship was encouraged for all.

A typical boarding house meal included: white bread, corn bread, sliced tomatoes in season, kraut, celery, boiled cabbage, sliced onions, boiled beef, corned-beef, potatoes, canned corn, canned tomatoes, brown gravy, custard or rice pudding, iced tea, coffee and milk. The charge for this meal was 40¢. It was served family-style, and as many as 200 people per day ate at the boarding house.

Drinking water was hauled in a wooden tank on a wagon and came by every day. Each family would fill buckets to suit their needs. Water used to wash clothes was piped in from a reservoir. For lighting people used gas piped in from gas wells. "It was quite a sight to view the drilling rigs and hear the engines at the pumping wells," said Frank Shirk, a former Midian oil worker.

The oil workers' pay varied according to the work or job they performed. Wages started at 48¢ per hour and later increased to 64¢. They earned \$105.00 to \$110.00 per month. The Rig Builder was paid \$10.00 a day. There were 6 to 8 men in a crew and it took 8 to 10 days to build a rig. A Driller received \$9.00 per day, a Tool Dresser \$8.00; then the pay scale dropped rapidly. The Roustabout (his job was to keep each pump operating at top efficiency) was paid \$95.00 a month. The Pumper checked certain wells, recorded their progress and reported problems to the Roustabout. He was paid \$105.00 per month. They worked nine hours a day seven days a week. The Paymaster came around and took the names of men working on the job. The company kept a ledger which each worker signed when he went to work, and would be paid two weeks later. The ledger was 2 feet by 1 foot in size.

One oil company named the Trapshooter Oil Company was organized in Wichita by men attending a trap shoot. They were: Ed O'Brian of Florence, Kansas; E. W. Arnold, Larned; E. C. Houser, Augusta; F. M. Luther, Jr., Cimarron; Ed Jenkins, Cullison; D. W. Travis, Wichita; Charles Dannenfelser, Florence; Walter Hastings, Hutchinson; B. W. Smith, El Dorado; E. A. Reilly, Hutchinson and D. D. Gross, Kansas City. Short of money to complete development of 80 acres, they sold half-interest to Eureka Oil and Gas Company of Kansas City, Missouri; S. H. Hale, President.

Eureka Trapshooter No. 1 came in with 400 gallons flowing naturally and increased to 750 gallons when put on pump. They drilled 18 additional wells. No. 3 well came in producing 12,000 gallon per day, and No. 8 produced 20,000 gallons for some time. There were a total of 61 wells on the A. J. Shumway farm, 50 were oil and 11 were gas. Shumway No. 5 started with 12,000 and increased to 15,000 barrels per day. Four years later this well still produced 90 barrels per day.

Sixty-four wells on the Peder Paulson land in a mile-square lease were drilled. There were 82 wells on Enyart land, one well produced 10,000 barrels per day. There were 9 wells on Fowler land located about 100 yards from the El Dorado Dry Hole. These are only a portion of the wells that were producing in the Midian area. Many produced 1000 to 4000 barrels per day. There were 28 leases; over 1132 wells were drilled. Oil sold for \$2.25 per barrel at that time. Clymer reported in the El Dorado Times that the Allies floated to victory on a sea of oil in World War I, and the El Dorado Field was one of the creators of that sea. In 1918 it produced 8.9 percent of all the oil in the United States.

Continued on page 74

**Boom Town continued:**

Some of the early residents of Midian included the following: Bill and Lucy Ann Veer Flowers; Mr. and Mrs. Willie Lowrance; Mr. and Mrs. Harold L. Brickley; Mr. and Mrs. Floyd Leep; Mrs. Troy Grove; Mrs. Andy Hawks, Fanny K. Andrus and 5 children; Mr. and Mrs. Keith operated a boarding house.

Businesses in Midian included a general store, a butcher shop, barber shop, post office and photographers.

The General Store was started by Charles H. Thuma. He was born September 11, 1887 at Falls City, Nebraska and married Madge B. Bishop, October 9, 1909 in Independence, Kansas. They came to Midian in October 1919 and left in 1938. They had three children: Juanita, Jack and Madge. At one time they had 13 clerks working for them. Another grocerman was Ray Wright. Miley Groves ran the butcher shop. A Mr. Sims had a barber shop. Photographers were Otis Shrout and Ed Banks.

There was a post office in Midian from November 5, 1918 to July 22, 1950. The first unofficial postmistress was Mrs. Lillie N. Johnson who ran a hamburger stand on the main Midian corner. Soon mail carriers began leaving letters with her. She put a box in the corner of her shop so people could collect them. Mrs. Anna C. Moore was the first official postmistress in 1918; Dorothy T. Neal was appointed in November 1923; Mrs. Eva Bigelow in June 1928; Chas. H. Thuma in 1930; Mrs. Lottie Brown in May 1936; Elizabeth B. Blass in 1939 and John A. Beuchard served in 1950.

The railroad station was a busy place. The first depot was a boxcar. Passenger trains came through five times daily. Roads were muddy and bad--so people used the train. The cars were loaded with people standing in aisles and doorways. As many as 500 tickets were sold in a day.

To locate Midian, take Highway 196 running west of El Dorado for three miles. Turn on Highway 257 going towards Towanda and continue another 2 miles--then you will be in the heart of Midian.

The above history of Midian happened in less than ten years (1917-1925) in an area covering seven square miles. When the oil boom was over nothing remained to show a boom had happened. The buildings were torn down and moved away. People found other work or moved on to another oil field.

The discoveries at Midian were the largest in the El Dorado Field and the biggest oil news in the country at the time. By 1960 about 40 million barrels of oil had been pumped from the Midian Field. Statements such as: "Modern technological changes will never produce boom towns such as Midian, no matter how high the production. Machines have replaced the demand for manpower," have been disproven when the coal and oil discoveries in Wyoming in the last ten years have caused some small boom towns to grow so fast that they resemble those of earlier days. Mobile homes have replaced the tents and company-built houses. Realtors and builders again move in rapidly. Both skilled and unskilled workers must be served in order for them to produce our most needed commodities--coal, oil and gas to run this country and have some to spare for our allies.

---

"PILL BAGS".....SADDLE BAGS were used by the early day doctors for their medicines and surgical supplies. They were sometimes called "pill bags" They were two bags held together by a broad leather strap; two feet or more in length. Each bag was identical to the other except one had a flat side on right and the other on its left. These were tied to the daddle and the leather strap was used for a handle by the doctor to carry his pill bag.

## KANSAS STATE CENSUS 1885 BUTLER COUNTY

Roll 14 El Dorado Township Vol 28 through 29 James Fisher, Co. Clerk, Aug 14  
City of Augusta:

NAME	AGE	SEX	BORN ?	OCCUPATION	CIVIL WAR SERV.	DISCH.
1. BALDWIN, Sylvanus	42	M	Iowa	Laborer	Co. I Iowa Inf.	17 Reg
Sarah	37	F	Ill.	housewife		
Sophia	10	F	Ill		(from Ill. to Ks. )	
Amos B.	2	M	Ks.			
2. BAKER, Terry M.	20	M	Ill.	Laborer	(Ill. to Ks.)	
Florence	20	F	Ill.			
I. H.	57	M	Va. (Widower)			
Barnes, Vondyke	25	M	Ill.			
Malissa	58	F	Ind. (widow)			
3. HANDLEY, John	37	M	Tenn.	Laborer		
Mary	34	F	Tenn.	housewife		
William S.	16	M	"			
Willson S.	14	M	"			
Mary E.	12	F	"			
Sarah	10	F	"			
Nancy J.	6	F	"	(all Tenn. to Ks. )		
4. FRENCH, George T.	43	M	Eng.	?	Co. F Ill. Inf.	65 Reg.
Alma	43	F	Ill.	housewife	(to Ks. fr. Minn.)	
Cornelius	16	M	Minn.			
Catherine	13	F	"			
Willard	8	M	Ill.			
Clarence	7	M	Minn.			
Clara	4	F	Kans	(all Minn. to Ks.)		
5. BURROWS, ARASTUS	66	M	N.Y.	machinist	Co. K Ill. Inf.	144 R.
Elmer G.	23	M	Ill.			
Nellie	14	F	Kans			
Murphy, John	25	M	Ill.	Engineer	(fr. Ill. to Ks.)	
6. illegible.						
7. DYER, Spencer J.	44	M	Ohio	Painter	Co. B Ill Cavl.	3 Reg.
Elizabeth	36	F	Ohio	housewife		
Charles W.	16	M	Wis.			
Frank A.	14	M	Neb.	(fr. Iowa to Kans.)		
8. BIDDELL, Adolphus	26	M	N. Y.	Laborer	(fr. Ind. to Kans)	
Alice L.	19	F	Ind.	housewife	(Ill. to Kans.)	
Charles A.	2	M	Kans.			
Walter B.	1mo.	M	Kans.			
Barnes, Thomas	29	M	Ill.	Jeweler	(Ill. to Kans.)	
9. SHITES, Teresa W.	40	F	Ky.	(widow - Mo. to Ks.)		
William K.	21	M	Ill.	Laborer		
John	18	M	Mo.			
Fannie	23	F	Mo.			
10. BRUCE, Alfonso	38	M	N.H.	Farmer		
Sarah M.	38	F	Ohio	(all Ill. to Ks.)		
Rosia M.	15	F	Ill.			
William	14	M	Ill			
James	12	M	"			
Charles	10	M	"			
Herbert	8	M	"			
BIEHN, Felix	22	M	Minn.	Laborer	(Neb. to Kans.)	
11. ADAMS, OLIVER J.	33	M	Ohio	Railroad		
Maggie	33	F	Mo.			
Ann B.	9	F	Ohio			

Continued on following page

Kansas State Census 1885 Butler Co. City of Augusta, continued:

(Discharge)

NAME	AGE	SEX	BORN ?	OCCUPATION	CIVIL WAR SERVICE
11. continued					
ADAMS, Joseph	3	M	Mo.		
Martin A.	9mo.	M	Ks.	(all Mo. to Kams.)	
12. ADAMS, Oscar	26	M	Ohio	Section Boss	
Maggie	26	F	Ill		
Lucy M.	3	F	Kams.		
Sarah E.	1	F	Kams.		
13. McILVAIN, John W.	41	M	Ind.	Carpenter	Co.C Ind. Inf.22 Reg
Mary J.	35	F	Ohio		
Bessie	14	F	Ind.		
Fonie	12	M	IND.		
Hettie	9	F	"		
Alvin	7	M	"		
Oran	5	M	"		
Callie	1	F	Kams.	(all Ill to Kams.)	
14. SIMPSON, Peter	34	M	Penn.	Stonemason	
Anna	24	F	Mo.	(all Mo. to Kams.)	
Maggie	9	F	Iowa		
Nora	7	F	"		
May	2	F	Kams.		
15. SCHLOSSER, Jacob	48	M	Ohio	Carpenter	Co.F Ind Inf 153 Reg.
Angelettie	32	F	Ill		
Bertie	11	M	"		
Mannie	9	M	"	(Ill. to Kams.)	
Myrtle	6	F	Kans		
Grace	3	F	Kans.		
Mandy	5mo.	F.	Kans		
16. CARR, Samuel C.	56	M	Penn.	Carpenter	Co.F Ia. Cav1.6 Reg.
Mary	37	F	N. Y.		
Jennie	6	F	Iowa		
Eber	5	M	Iowa	(Ia. to Kams.)	
17. CROW, Samuel	54	M	Ky	Laborer	
Anise F.	42	F	Ill.		
Thomas A.	26	M	Mo.		
Henry F.	20	M	Mo.		
Eleanor R.	15	F	Ill.	(Ill. to Kansas)	
18. JOHNSON, JAMES M.	39	M	Ky	Carpenter	
Lissa	28	F	Tenn.		
Arthur C.	5	M	Ky.		
James	2mo	M	Ks.	(Ky to Kams.)	
19. DeWITT, James C.	41	M	Ill.	Laborer	Co. G, Ill Inf. 46 Reg.
Mariah C.	46	F	Ohio		
James O.	14	M	Ill.		
Lewella	13	F	Ill.		
Henry	10	M	Ill.		
Mariah E.	7	F	Ill.	(Ill. to Ks.)	
Victor M.	5	M	Kans		
20. GALLAGHER, Frank	28	M	Ill.	Laborer	(Ind. to Ks.)
Cella	18	F.	Ohio		(Ohio to Ks.)
21. DILLON, George W.	30	M	Ohio	City Marshal	
Sarah A.	25	F	Mo.		
Charles S.	2	M	Mo.	(Mo. to Kams.)	
22. WELDAY, John T.	33	M	Ill.	Grocery Clerk	
Martha	27	F	Ill.		
Nellie	10	F.	"		
Katie	5	F	Kans.		

To Be Continued next issue:

## BUTLER COUNTY MARRIAGES, 1861-72/Continued:

compiled by Blanche Todroff

PAGE	NAME	AGE	DATE	OFFICIATING
58	SHERMAN, John W	26	17 Nov 1870	W.A. Sallee J.P.
	Franky Emily BAILEY	23		
70	SHOUGH, Joseph	46	8 Mar. 1871	I. W. Hess J.P.
	Mrs. Mary A. SHOUGH	31		
170	SINCLAIR, Wm. M	21	13 May 1873	Rev L.S. Friend
	B. F. GULLIFER	18		
1	SLATTON, Wm. WALLACE	28	23 Mar. 1864	Henry Martin
	Sarah Caroline SATCHEL	20		
93	SMALL, John	19	8 Dec. 1871	Rev. Phineas Hathaway
	Eliza J. BROWN	18		
121	SPENCER, Thomas	22	11 June 1872	Rev. A. Hartman
	Sadie BUCK	22		
68	SPALDING, Richard C.	39	19 Jan 1871	Rev. Isaac Mooney
	Nancy EDMISTON	20		
100	STEWART, James	27	10 Feb. 1872	S.L. Roberts
	Mina A. LISK	23		
2	STEWART, Squire	—	18 Aug. 1865	Joseph Adams J.P.
	Elizabeth ATWOOD	—		
34	STINSON, Geo. W.	25	14 Dec. 1869	James Gordon
	Jennie RAYBURN	19		
138	STODDARD, H.E.	32	27 Oct. 1872	Rev. J.G.Houston
	S.L. MAPLE	19		
82	STONE, John B.	27	2 Aug. 1871	H.B. Coggeshall J.P.
	Barbara TETER	18		
89	SUMPTION, Chas. A.	22	3 Dec. 1871	Jacob KING, J.P.
	Annie E. GRAVES	17		
136	TAYLOR, Richard	27	16 Jy 1872	Rev. J.J. Valkenakee ?
	Sarah HOBBS	23		
137	THOMAS, Edward J.	35	1 Aug 1872	Rev Albert Hartman
	Jerusha R. DETANTE	27		
30	THOMAS, James	33	14 Nov. 1869	W.A. Sallee
	Mary STRICKLAND	20		
13	THOMM, W.H.	27	9 Nov. 1868	John Stansberry
	Sarah A. YOUNG	28		
71	THORNBURG, E.J.	53	2 April 1871	Rev. Chas A. Stine
	Mrs. Mary E. THORNBURG	27		
20	TOWSLEY (Towsly) Isaac	30	1 JULY 1869	Wm. Harrison. P.J.
	Hattie Belle HAGER	16		
19	TOWSLY, Wm.	33	21 June 1869	Wm Harrison P.J.
	Jerusha WISLEY	33		
150	TUCKER, Henry E.	26	21 Jan 1872	Rev. John Ellis
	Mary A. ELLIS	18		
96	VANDERHOFF, T.H.	27	21 Jan 1872	no name given
	Hattie CREASE	18		
29	WHITE, CHARLES	23	7 Nov. 1869	W.A. Sallee J.P.
	Patience STRICKLAND	18		
67	WHITE, John	25	1 Jan 1871	Rev. C.A. Stine
	Delia R. LAMB	19		
17	WHITE, John E	23	22 May 1869	Rev. Henry Small
	Marietta BAILY	17		
21	WILCOX, Boorman H.	21	4 Jy 1869	Wm. Harrison P.J.
148	Mary Jane LAWRENCE	18		
148	WILKIN, Neil	31	16 Sept. 1872	Rev. J COPELAND
	A.S. HENDERSON	31		

Continued to page 78

154	WILKERSON, John	30	26 Jan 1873	C. N. Stine
	Willeth Ellen DAILEY	17		
119	WILLET, John	28	23 May 1872	Wm. Harrison, P.J.
	Julia A. HARRISON	20		
134	WILSON, Albert L.	33	22 June 1872	Rev. E.L. Snow
	Mrs. Rhoda ECKLEY	24		
130	WILSON, Rufus C.	25	4 Jy 1872	C.N. Jones, J.P.
	Margaret E. STEEL	19		

(J.P. means Justice of Peace; P.J. means Police Judge)

We owe Blanche Todroff a lot of Appreciation for her work in compiling the Butler County marriages. It takes a great deal of time to copy these. gh

## WE WELCOME THE FOLLOWING NEW MEMBERS:

(FEB.1 to JULY 1, 1983)

Robert D. BLISS	101 N. Park, Maize, Ks. 67101
Charles & Margaret BROOKSHIER	4129 Main, Campo Seco, Ca., 95226
Jaequi COONROD	9200 Suncrest, Wichita, Ks. 67212
Mrs. Waymond DICKINSON	2700 Charleston N E Albuquerque, N.m 87110
Betty DOW	R.R. 1 Box 226 Mt. Hope, Ks. 67108
Lilley M. ESAU	206 Laurel Lane, McGeryor, Tex. 76653
Martha R. FLEMING	614 Riverdale Dr., Mulvane, Ks. 67110
Wanda GLASSBURNER	239 N. Brookside, Wichita, Ks. 67208
Sharon GIFFORD	3140 N. Woodland, Wichita, Ks. 67204
Dan & Linden GENTRY	P.O. Box 13, Andover, Ks. 67002
Sylvester & Rosena HELMERMAN	337 N. Martinson, Wichita, Ks. 67203
Susan HEINRICH	735 N. Baehr, Wichita, Ks. 67212
*Debbie HERRINGTON	1123 N. Pershing, Wichita, Ks. 67208
Richard & Jueline JOHNSTONE	Rt. 1 Box 627, Mulvane, Ks. 67110
Esther KNOWLTON	113 N. Byron, Wichita, Ks. 67212
Lloyd & Leona KELLER	Box 1805, Hutchinson, Ks. 67501
Walter & Barbara KNOX	R.R 1 Box 113, South Haven, Ks. 67140
Susan R. LOVETT	5402 Lambsdale, Wichita, Ks. 67216
Charles MABEN	1327 Amsden, Wichita, Ks. 67203
John MARVIN	2039 Irwin Place, Madison, Wis. 53713
MARILYNN GARST MAYER	3038 So. Fountain, Wichita, Ks. 67218
Daniel & Annie MERRIAM	5918 E. 10th, Wichita, Ks. 67206
Betty Eaton MICHELSON	7321 East Orme, Wichita, Ks. 67207
Conrad & Lila OSBORNE	7007 Beachy, Wichita, Ks. 67206
Laurie PARKER	9400 E. Lincoln #418, Wichita, Ks. 67207
Emily RATHGEBER	1636 Murry Dr., Alva, Okla. 73717
Major Stan REED	R.R. 5, Geneseo Hill, Geneseo, Ill. 61254
Donna RICHMOND	909 Davis, Wichita, Ks. 67217
Mrs. Curtis RINKER	3100 N. Maize Rd., Wichita, Ks. 67205
Vivian F. RUPERT	513 S. 10th St., Wichita, Ks. 67203
Denis SAWYER	3423 Sunny Lane, Wichita, Ks. 67205
Patricia SLATE	909 Davis, Wichita, Ks. 67217
Jerry Ann STOUT	1739 N. Kessler, Wichita, Ks. 67203
Wava L. THOMPSON	8013 E. Orme, Wichita, Ks. 67207
Barbara THORNTON	525 N. Volutsia, Wichita, Ks. 67214
Victor & Jean VORHEES	3244 Country Club, Wichita, Ks. 67208
Kathleen WATSON	1027 N. Edgemoor, Wichita, Ks. 67208
Doris WEAVER	10202 Sabroma, Wichita, Ks. 67212
Shirley Chalker WELLS	2008 George Washington Blvd, Wichita, Ks 67218
Karen WOHLWEND	12909 S. 30th St., Omaha, Neb. 68123

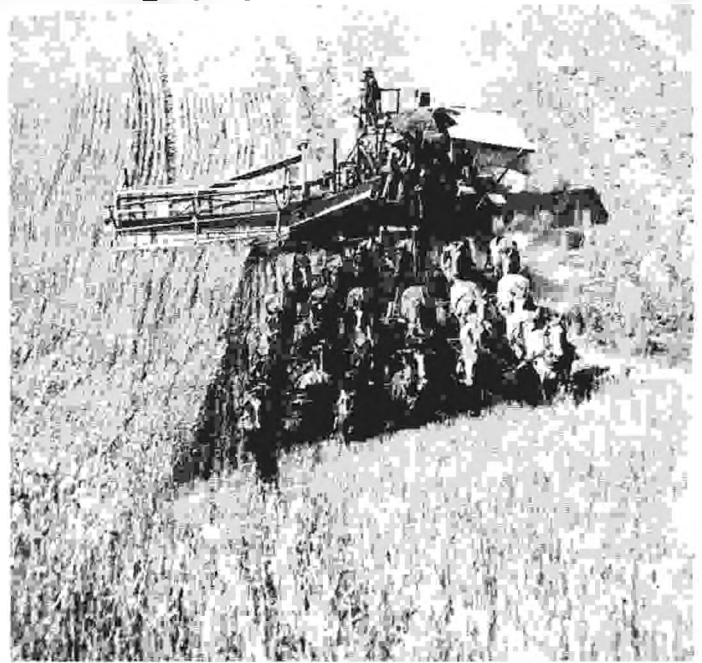
# GRAIN HARVEST OF EARLY DAYS



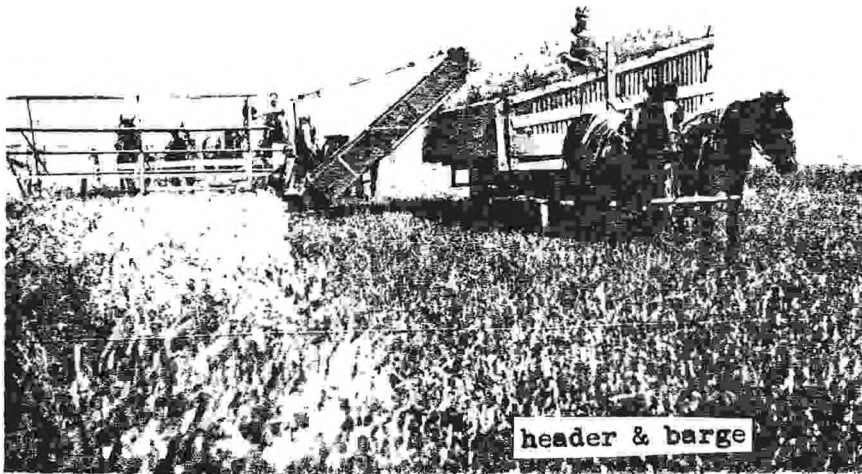
S  
C  
Y  
T  
H  
E



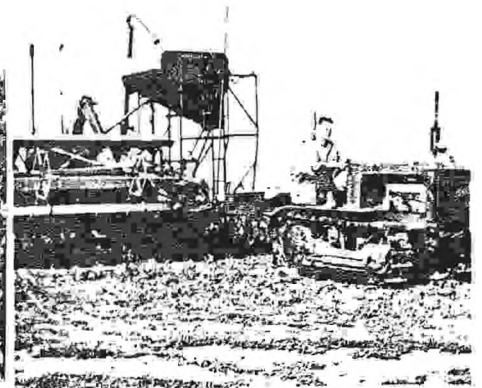
bundle of grain



New farm machines boosted food output as Midwest became U. S. breadbasket. In colonial days, 19 farmers clothed and fed themselves and one city person. By 1880 same number supplied 132.



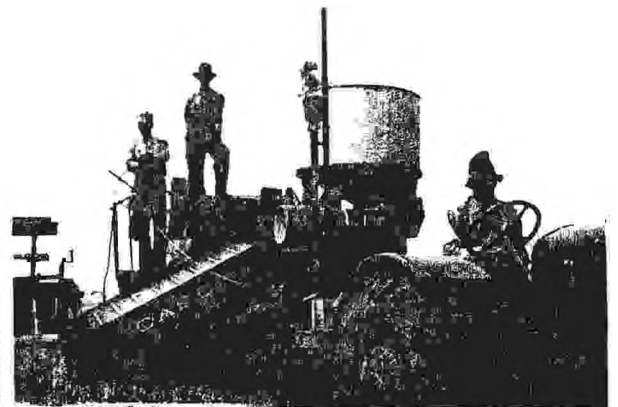
header & barge



early combine & tractor



threshing machine & crew



combine & rubber tired tractor

## THE GRAIN HARVEST OF EARLY DAYS

by Merle Seavey

We are aware of the long ago stone and later metal knife or machete for harvesting grain in ancient times. The father-time type scythe and its improved cradle scythe were harvesting tools in the early 1800s. Surprisingly this side-arm scythe is still used in irrigated country to cut overgrowth from the irrigation ditch banks where the growth hinders water flow. Cyrus McCormick's 1831 invention of the reaper was a giant step in grain production. The first units were merely a sickle to cut the grain but soon improved models transported the grain to "on board" workmen who manually collected and tied the bundles. The industrial boom, had by 1880 better than 60,000 self binders in the harvest field. These binders cut from 8 to 12 foot swaths with a mechanical collector and ingenious twine knoter that would tie the bundles and they would be ejected on to an attached bundle carrier. With a sufficient load of bundles the operator would trip the carrier to unload the bundles in an approximate row and they in turn would be manually shocked or sometimes hauled to an appropriate place and stacked. If stacked, the bundles would go through a sweat and drying cycle. The earlier binders were ground powered via a large bull wheel and normally pulled by four draft horses.

Grain binders were a companion implement to the later header machine, giving a few days advantage against possible hail damage as grain could be bound ahead of the riper grain needed for 'headers'. The United States had 250,000 binders by 1885.

At the turn of the century the header was a popular harvest implement that would cut up to a 14 foot swath and move along faster than a binder. Usually propelled by four or six draft animals, it could cut wheat or barley that was too short for the binder and cut less straw when the grain grew tall. The cut grain was elevated into the header box which was built on the order of a hay rack with slatted high side and ends; with the right side having a lower rail to accommodate the header elevator. Several header barges were used and a field would be cut in plots to eliminate barge travel. They would catch the grain from the header and be tramped and loaded to make as large a load as possible, then hauled to the stack site and unloaded on to a stack that looked like a loaf of bread. The stacks were in multiples of two to accommodate hand pitching of grain into the threshing feeder.

Good stacker men were looked up to and usually drew premium wages. Their stacks should not collapse and if properly made would shed moisture. Perhaps one detriment of the header was the large number of horses and workmen needed, including the ladies of the house who had to feed the men three times a day.

A companion to the harvesters was the threshing machine or separator. No doubt the first were quite simple, moving from place to place with horses and/or mules. The horse-powered sweep was the propelling power for the earliest threshing machines. These threshers soon evolved into a complex and dependable machine, normally one or two to a community and usually owned by farmers with a bit more aptitude and aggressiveness. .

These men to my thinking were a special breed ! I could never fathom how they stood all that chaff, beards and dirt, cemented on with sweat and going down their shirt collars and up their pant legs. They would literally crawl into the gizzards of these behemoths if a problem needed tending. Threshing was mostly a custom job; mileage perhaps, but mostly so much a bushel as per a mechanical counter on the machine. Operators obligation was not to waste too much grain into the straw pile. These huge straw piles were well thought of and filled a definite need for those who had considerable amount of livestock.

Now , there are the square and round bales from straw catchers behind the combines, windrowers followed by balers. Also, there is lots of straw left on the ground for ground cover and thatch against soil erosion. The number of grain wagons needed to haul grain from thrasher to grainery depended on pro-

## THE GRAIN HARVEST OF EARLY DAYS, continued:

production in relation to the straw, distance to grainery or unloading place and the scooping abilities of the workmen. This scooping was normally through a 2'x2' hole several feet above the ground on the side of the grainery. With the advent of trucks the excess might be hauled directly to town where they could handle the grain at a rapid pace, mechanically.

After the above mentioned horse powered sweeps, the next power used was the steam powered tractor. They were very heavy and very intolerant of wet muddy ground. Quite a problem was the security against fire in the chaff and straw. Often the much needed water and coal for fuel was a problem and they became obsolete with the gasoline tractor. They began to disappear by the early 1930s. However, there are a few still operating at fall festivals and fairs. i.e. Bird City, Ks., Linden, Neb and nearer Wichita, they can be found at Sedgwick, Goessel, etc. to name a few.

The first gasoline tractors were rather crude and heavy and were on lugged steel wheels that spaded up lots of dirt and were less efficient than the rubber tires of the middle thirties. The earlier combines had an on board gasoline engine which powered the separator and cutter platform and with the towing tractor made a two man crew.

In a few years the true self-propelled combine made its debut with its many improvements. They have grown into a monstrous mechanical piece of equipment that many of us are not aware of. They are a mechanical marvel with hydraulic electric and electronic controls in an air conditioned cab with perhaps F.M. radio. C.B. and ?? Also, they cost a fortune. They cut up to 30 foot swaths with a 280 bushel grain bin (or more), unloading grain auger, large enough to make a hauling ruck groan in a minute or so. Usually there is no stopping to unload or transfer grain from combine to truck. This takes place on the go. I had the opportunity to help a 12 year old grand nephew operate one of these machines, his father keeping in touch via C.B. radio. We were part of a crew that cut a 76 foot swath at a time in Northwest Cheyenne County, Kansas.

Then, there is the migrant combine crew; often family operated, that will work a complete season from Texas to Canada, complete with mobil home and grain hauling truck. A lot of progress in 200 years from the scythe to Modern day combines !

---

### "Basic Laws of Cousinary"

1. For two people to be cousins of any kind, they must share a common set of Grandparents, great-Grandparents, great-great-Grandparents, etc., somewhere in the family tree.
2. The children of your first cousins and their children, and their children's children, etc, remain your first cousins. However they may be once removed, twice removed, three times removed, etc., (The cousin of your G G G G Grandmother is still your first cousin, but six times removed.)
3. To be a first, second or third cousin without any removed's being involved, the two cousins must be of the same generation. For example: the child of your Father's brother is your first cousin; the child of the child of your father's brother is your first cousin, once removed, but your child and the child of the child of your Father's brother are second cousins.

---

There were 620,000 soldiers on both sides killed in the Civil War.

# ABANDONED TOWNS IN REPUBLIC COUNTY

CRAINVILLE	- Liberty Township , Sec 27 on North corner. P.O. 1880. Desmond Crain, Postmaster, discontinued by 1900.
ELMA	- Liberty Township, Sec 19 P.O. 1873, Oliver S. Wood Postmaster, discontinued Dec.1880.
FENWICK	- Elk Creek Township, Sec 26 P.O. 1878. John Canary Postmaster, discontinued 1884.
HARBINE	- Washington Township, Sec 4, part of town in Nebraska. P.O. 1880 J.J. Waite Postmaster, discontinued March 1883 Also called Byron.
IDA	- Rose Creek Twp. P.O. 1873-1888. J.P. Williams P.M.
JAY EAU	- Rose Creek Twp. P.O. 1872-Sept. 1874 W.J. Skeels, P.M. Nov. 30, 1874-Dec. 5, 1878, Ellison Holland P.M.
MIDLAND	- Courtland Twp. Sec 4, Near the river. P.O. 1876-1878 A.G. Kelsey P.M.
MINERSVILLE	- Lincoln Twp. Sec 35 on West Creek P.O. 1877 David W. Hamilton P.M. Charles E. Berggren P.M. when discontinued 1900.
NEILSBURGH	- Beaver Township, Sec 7 P.O.1874- April 28, 1879 John Neil P.M.
NEW SCANDINAVIA	- Scandia Twp. Sec 8 P.O. 1870- 1870 Mr. Asbeorson P.M. Name changed to Scandia in 1870 and Post office by 1877.
NEW TABOR	- Fairview Twp. Sec 23 P.O. 1875-1888 John Kasl P.M. Mt. Tabor same as New Tabor
PRAIRIE GROVE	- Albion Twp. Sec 10 P.O. 1872-1883 E.W. Hall P.M.
PRAIRIE HOME	- Jefferson Twp. Sec 2 P.O. 1871-1878 Wm. Phelps P.M.
PRAIRIE PLAIN	- Rose Creek Twp. Sec 33, 1871-1875 Benjamin Young P.M. Moved to New Tabor.
PROSPECT	- Courtland Twp. Sec 32, J.K. Glasgow P.M.
SALT MARSH	- Grant Twp. Sec 28 1866-1871 Eliada Way / James G. Tuthill P.M., oldest village in county, first P.O. in county, changed to Seapo 1871.
SEAPO	- Grant Twp. Sec 28 1871-1889 George W. Beebe P.M. site adjoins the Salt Marsh Seapo, Indian word for Salt Basin
SHERDAL	- Union Twp. Sec 19. P.O. April 2,1887- Sept. 30,1905 Olaf B. Strom P.M.
SOLDIER	- Courtland Twp. Sec 33 1872-1875 Geo. Sewars P.M. (1 mile from prospect)
SUNSET	- (Location ?) 1872-1873 B.A.Byse/Ira S. Hobbs P.M.
TALMAGE	- Big Bend Twp. Sec 5 near river. 1880-1882 Peter Wood P.M. Absorbed Wilber about 1880. Changed to Warwick 1884.
TIAGE	- Union Twp. Sec 13, 1882-1891 Wm. C. Kean, 1st P.M. Home of Albert Stinson.
WARWICK	- Big Bend Twp. Sec 5 P.O. 1882-1919 GW Wood-last P.M.
WEST CREEK	- Lincoln Twp. Sec 23 , P.O. 1871-1886 J.A. Deweese P.M.
WHITE ROCK	- White Rock Twp. Sec 7 SW1/4 Discontinued 1900. Chester Babcock P.M.
WILBER	- Big Bend Twp. Sec 1 1873-1880 W.A.Morse P.M.

Reference: Page 19/20, The History of Republic County Ks. 1964  
by Republic County Historical Society  
Submitted by: Robert Blackburn

SUMNER COUNTY, KANSAS EARLY DAY POST OFFICES, CONTINUED: from Vol. 18, issue no.1  
(most of these early post offices were a part of a small village. Many of these towns have disappeared & some of the towns remained after post offices closed.)

POST OFFICE	ESTABLISHED	CLOSED	FIRST POSTMASTER
EMINENCE	Feb. 5, 1872	June 10, 1872	E. L. Brown
EWELL	Mar. 3, 1885	Mar. 31, 1895	John G. Chism
Glen Valley changed to Cisne then Conway Springs			
Glen Valley	Nov. 22, 1878	June 15, 1881	Isaac Monnet
Guelph	Aug. 26, 1872	July 14, 1902	John Mason
Gurock	July 30, 1878	Transferred to Albion, Harner County	
Hessville	Dec. 9, 1872	April 28, 1881	George W. Hess
Hurst (First called Hurst Crossing, later changed to Corbin)	May 9, 1881-84)		
Hurst Crossing	June 28, 1878	May 9, 1881	William D. Hurst
Kitley	Feb. 22, 1877	July 15, 1879	Isaac McClaskey
Knox	Dec. 14, 1878	Oct. 31, 1887	Fremont W. Bowen
Levy (Later changed to Milton)			
Levy	Dec. 6, 1878	Oct. 15, 1887	Benj. F. Thompson
Littleton (Later changed to Mulvane)			
Littleton	Oct. 11, 1871	Sept. 1, 1879	Calvin V. Little
London	July 10, 1871	Sept. 20, 1887	Silas Harlan
Lone Star	July 2, 1875	Dec. 12, 1876	Wilbur C. Ordway
Marengo (First called Bellevue, later Mayfield)			
Marengo	Mar. 15, 1878	Sept. 8, 1880	Charles W. Walton
Massillon	May 14, 1878	Sept. 16, 1878	Jess Smith
Meridian	Oct. 19, 1871	Apr. 4, 1872	Jackson H. Lemmons
Missouri Flat	Sept. 4, 1879	Feb. 21, 1881	George H. Sexton
Neptawah (Later changed to Oxford)			
Neptawah	Apr. 5, 1871	June 23, 1871	Marcus L. Binkley
Northfield	Feb. 7, 1884	Oct. 13, 1884	John Dautrich
Orie	Jan. 30, 1877	Sept. 8, 1884	Elias H. Fitzgerald
Palestine	July 19, 1871	Jan. 20, 1873	Christopher C. Shore
Pontoon	May 22, 1879	June 12, 1880	Schuyler V. R. Hall
Purcell (Later Anson)	Dec. 31, 1885	Jan. 20, 1887	Wesley M. Purcell
Remanto (changed to Salt City)			
Remanto	May 6, 1872	Oct. 26, 1874	Orin J. Ward
Rex (later Blackstone)	Apr. 19, 1882	Feb. 3, 1888	James W. King
Rolling Green			
(later Millerton)	Jan. 6, 1875	Sept. 3, 1884	Albert D. Sparr
Roy	Feb. 24, 1879	Aug. 18, 1886	Robert Elarston
Salt City (later Geuda Springs)			
	Oct. 26, 1874	Aug. 18, 1886	Charles C. Stevens
Slate Creek	Feb. 27, 1877	June 14, 1878	Mrs. L. R. Davis
Spring Dell	July 28, 1879	Apr. 28, 1880	Sargent J. Kingsley
Summer	Jan. 11, 1871	Aug. 3, 1882	Edmond H. Doyle
Sunny Slope	Feb. 1, 1877	Oct. 13, 1884	John McFarlane
Sunset	July 27, 1880	Jan. 20, 1888	Rufus S. Carter
Swedona (first	June 5, 1877	Sept. 1885	Alvin Crippen
(first called Belinda)			

(to be concluded in next issue)

CORRECTION: In last issue of Register, Vol XVIII no. 1 (Apr-June) we failed to include the full name of a publication that was reviewed. It should have been STOCKSTILL - OLIA PODRIDA. . . as the title states a little bit of everything; all in the pot. Published quarterly by the Editor, Betty Smith Davis, for those interested in the Stockstill Families and variant spellings Stogdell, Stodghill, Sturgill, etc. Subscription rates, \$10.00 per yr, publ. quarterly. Order from Mrs. Betty Smith Davis, 1700 Mustang Trail, Kingwood, Texas 77339

## THE BURDUE CEMETERY RECORDS

(The Burdue Cemetery is on the old Burdue homestead, near Collins, Ohio, Townsend Township, Lot 4, Section 3. The Burdue homestead by William and Elizabeth (Blazer) Burdue, was established in 1810 in Huron County, Ohio. I, Jacob Burdue, have visited these graves. The parts that are marked in parenthesis is added from other information that I have, and in BURDUE FAMILY 1748 - 1981.)



WE MADE A TRIP  
TO OHIO IN  
THE EARLY  
1950's

(Copies of the  
Burdue Book may  
be obtained from  
Jacob Burdue,  
Wichita, Kansas.)

WM. BURDUE, d Oct. 23, 1834, aged 51-11-3.  
ELIZABETH, wife of Wm. Burdue, d Mar. 29, 1868, aged 76-6-3.  
GEO. BURDUE, (b Feb. 19, 1811-1893)  
SUSAN HILL, his wife, d Mar. 17, 1885; 63-5-12.  
MARY G., wife of N. Burdue, d Dec. 22, 1869, aged 59 years.  
BERNARD G., son of N. & M. Burdue, d Nov. 19, 1858, aged 4-9-18.  
BARBARY J., dau. of N. & M. Burdue, d Nov. 16, 1858, aged 18-1-29.  
MARIA, dau. of N. & M. Burdue, b May 3, 1836; d Mar. 1, 1864.  
MARY E. BURDUE, wife of Lorenzo A. Cornell, d Oct. 18, 1865,  
aged 31-8-11. (dau. of N. & M. Burdue.)  
ELLA ANN HAYS, (dau. of N. & M. Burdue.)  
ISAAC B., son of W. W. & E. E. Burdue, d Feb. 26, 1856, age  
9 mos. 9 days.  
LORINDA, wife of W. W. Burdue, d Mar. 15, 1850, aged 28-7-26.  
OLIVE, wife of Joseph Studley, d Nov. 6, 1840, aged 65-5-18.  
GEORGE N., son of G. W. & B. Burdue, d July 18, 1866, aged 11-10-21.  
NELSON S., son of G. W. & B. Burdue, d Aug. 21, 1858, aged (?)  
GEORGE MILLER, d Feb. 7, 1828, in the 63 of his  
MARY, wife of George Miller, d April 17, 1849, in the 74 year of  
her age. (She was a sister of William Burdue.)  
JOSEPH OSTER, d Dec. 25, 1831, aged 62-9-17.

### BERLIN HEIGHTS, OHIO, BAPTIST CEMETERY

NATHANIEL BURDUE, Captain Delap's Co. Pa. Mil. Rev. War (markers,  
War 1776; War 1812). (Nathaniel Burdue, b 1748, Woodbridge,  
New Jersey; d Mar. 2, 1837, in Berlin Township, at age of 89.  
Grave marked by Daughters of the American Revolution. He was  
my great-great-grandfather.--Jacob Burdue.)

## LANIER FAMILY BIBLE RECORDS

The following was taken from the family Bible of James Lanier and Rosa Donahoe (Donahue) Lanier. They lived most of their lives in East Atchison (Winthrop) Buchanan County, Missouri. James Lanier was born in Tennessee on 6 October 1839. During his early life he served as a wagon train scout between St. Joseph and Denver and formed a personal acquaintanceship with Buffalo Bill Cody. Late in life he moved to Miami, Oklahoma where he lived with his daughter Cora and her family. He died on 28 November 1938 at the age of 99 years.

### BIRTHS:

Clara Lanier born 2 September 1862.  
Alice Lanier born 15 December 1864.  
William H. Lanier born 17 November 1869.  
Tommy and Cora Lanier born 17 November 1869.  
Annie Lanier born 24 August 1877.  
Anton Schehrer born 28 October 1866.  
Cecil L. Schehrer born 16 December 1894.  
Mildred A. Schehrer born 5 July 1897.  
Ethyl Mylar born 19 February 1899.  
Harry A. Schehrer born 29 June 1900.  
Chester Schehrer born 19 March 1903.  
Nina Hazel Schehrer born 28 September 1907.

### MARRIAGES:

James Lanier of E. Atchison Mo. m. Rosa Donahoe of Ireland on 13 December 1861.  
Martha Alice Lanier m. Mahlin Perdue on 28 August 1883.  
Cora Lanier m. Anton Schehrer on 17 January 1894.  
Anna E. Lanier m. E. Mylar on 11 November 1897.

### DEATHS:

Alice Lanier Perdue died 4 January 1885.  
Clara Lanier died 22 May 1888.  
William Lanier died 16 March 1896.  
Mrs. Rosa Lanier died 24 March 1896.  
Anna E. Lanier Mylar died 19 March 1899.  
Thomas J. Lanier died 19 August 1898.  
Ethyl Mylar died 24 December 1899.  
Mrs. Cora Lanier Schehrer died 24 October 1938.  
James Lanier died 24 November 1938.  
Anton Schehrer died 6 June 1925

The first seven of these are buried in Mt. Vernon Cemetery in Atchison, Kansas. The last three are buried in the G.A.R. Cemetery at Miami, Oklahoma.

Bible Records in possession of John Schehrer, Joplin, Missouri, Contributor.

ANCESTOR CHART: Judith A. (Douvielle) LANKFORD, 522 Hickory Lane,  
Valley Center, Kansas 67147

1. DOUVIELLE, Judith Ann b. 20 Dec. 1945, Portland, Me.; m. 16 Mar. 1962, Portland, Me., Wade Hampton LANKFORD, b. 31 Jul. 1940, Lyons, Kansas.
2. DOUVIELLE, Arthur Ralph b. 24 Aug. 1920, Biddeford, Me.; m. 30 Jul. 1940, Portland, Me.
3. DAVIS, Elizabeth Etta b. 27 Sept. 1920, Fairfield, Al.
4. DOUVIELLE, Arthur Joseph b. 30 Mar. 1901, Biddeford, Me.; m. 16 Aug. 1919, Dover, N.H.
5. COLPRITT, Louiza Evelyn b. 13 Nov. 1903, Eastport, Me.
6. DAVIS, Robert Isaac Gaston b. 16 June, 1891. Haleyville, Al.; m. 6 Oct. 1917, Portland, Me.; d. 18 Aug. 1970, Togus, Me.
7. HILTON, Azelia Marguerita b. 14 Aug. 1895, Augusta, Me.; d. 18 Sept. 1975, Portland, Me.
8. DOUVIELLE, Arthur
9. ROSS, Delia
10. COLPRITT, Daniel C.
11. VANNER, Jane Crank b. 8 Nov. 1841 (?); d. 27 Jan. 1900 (?).
12. DAVIS, William b. Haleyville, Al.; d. 10 Dec. 1918/19.
13. JENN, Margaret Martha d. 2 Dec. 1933, Lapeer, Mi.
14. HILTON, James Edward b. 15 Nov. 1860, Stuben, Me.; d. Nov. 1945, Portland, Me.
15. HILTON, Elizabeth Emelyn b. 22 Oct. 1871, Lubec, Me.; d. 31 Oct. 1950, Portland, Me.

ANCESTOR CHART: Wade Hampton LANKFORD, 522 Hickory Lane, Valley  
Center, Kansas 67147

1. LANKFORD, Wade Hampton b. 31 July, 1940, Lyons, Ks.; m. 16 Mar. 1962, Portland, Me., Judith Ann DOUVIELLE.
2. LANKFORD, Warren Luther b. 28 Jul. 1915, Denison, Tx.; m. 16 Oct. 1937, Hays, Ks.; d. 29 Jan. 1972, Wichita, Ks.
3. MILLER, Rosella Mae b. 25 Apr. 1917, Codell, Ks.
4. LANKFORD, James Lawrence b. 11 Nov. 1892, Denison, Tx.; m. 1910, Denison, Tx.
5. McCOIN, Beulah Ethel b. 27 Sept. 1893, Whitleyville, Tn.; d. 22 Jun 1953, Holdenville, Ok.
6. MILLER, John William b. 14 Sept. 1893, Wheatland, Me.; m. 20 Jan. 1915, Russell, Ks.; d. 13 Feb. 1929, Laton, Ks.
7. HUSTON, Vera Seymour (?) b. 7 Sept. 1892, Latham, Ks.
8. LANKFORD, William T. b. 1 Jan. 1812, Alabama; m. 29 Dec. 1847, Sherman, Tx.; d. 5 Jul. 1856, Denison, Tx.
9. CLARK, Martha b. 26 Apr. 1826, Ripley County, Ms.; d. 31 Aug. 1903, Denison, Tx.
10. McCOIN, Wade Hampton b. 19 Aug. 1859, Jackson County, Tn.; m. 8 Dec. 1881, Whitleyville, Tn.; d. 25 Feb. 1945, Holdenville, Ok.
11. CARVER, Carrie Etta b. 7 Oct. 1866, Whitleyville, Tn.; d. 7 Oct. 1959, Holdenville, Ok.
12. MILLER, David
13. (?) Husted ?
14. HUSTON, Thomas Elbert d. 1948, Carnation, Washington.
15. SEYMORE, Hattie Rose b. 3 Sept. 1872; d. 8 Jul. 1902

ANCESTOR CHART: Maxine A. (McConaha) TERREL, Box 83, Derby, Ks. 67037

1. McCONAHA, Maxine A. b. 29 Sept. 1934, Cushing, Ok.; m. 25 Apr. 1955, Wichita, Ks., Thomas Alton TERREL. Continued ..

ANCESTOR CHART: Maxine A. (McConaha) TERREL (Continued)

2. McCONAHA, Paul Ithamer b. 19 Jun. 1897, Independence, Ks.;  
m. 11 Sept. 1930, Newkirk, Ok.; d. 12 Nov. 1942, Cushing, Ok.
3. WELLS, Hazel Beatrice b. 11 Sept. 1910, Iowa.
4. McCONAHA, Charles b. 9 May 1870, Illinois; d. 17 May 1924,  
Vian, Ok.
5. BREEDING, Nevada b. 7 Oct. 1870; d. 16 Oct. 1930, Cushing, Ok.
6. WELLS, Wilbur Francis d. 9 Jan. 1917, Leon, Iowa. (b. 1876)
7. TABLER, Zana Margaret b. 12 May 1889; d. 28 Jun. 1921.
8. McCONAHA, Perry b. 1840, Ohio; d. 1893.
9. ENGLER, Elisha Mable b. 1845, Maryland; d. 1932.
10. ENGLER, Peter
11. CREASY, Carina Pocohauntus

ANCESTOR CHART: Betty B. (Bixby) ROBINSON, 1625 S. Green, Wichita,  
Kansas 67211

1. BIXBY, Betty Blanche b. 18 Feb. 1923, Wichita, Ks.; m. 22 Oct.  
1944, Garry Haught ROBINSON, b. 24 Aug. 1923.
2. BIXBY, Sidney George b. 17 May 1901, Wichita, Ks.; m. 1 May  
1920; d. 23 Jan. 1967, Wichita, Kansas.
3. TROUTMAN, Gladys Dorabelle b. 25 Jan. 1902, Caldwell, Ks.
4. BIXBY, George Russell b. 3 Oct. 1870, Wichita, Ks.; m. 3 Oct.  
1892; d. 27 Jun. 1951, Wichita, Kansas.
5. MURPHY, Mary Elizabeth b. 19 Jun. 1873, Rushville, Mo.; d.  
5 Jan. 1912, Wichita, Ks.
6. TROUTMAN, George Washington b. 25 Feb. 1874, Webster, Ill.;  
m. 1 Mar. 1898; d. 2 May 1950, Wichita, Ks.
7. FISCHER, Rosina Marie b. 16 Aug. 1877; d. 3 Jan 1972, Wichita,  
Kansas. Anoka, Minn.
8. BIXBY, Charles Wesley b. 26 Mar. 1843, Guilford, Vt.; m. 24  
Dec. 1868; d. 13 Oct. 1925, Wichita, Ks.
9. DUNCAN, Mary Olive b. 11 Mar. 1848, Norway Wi.; d. 8 Feb.  
1923, Wichita, Ks.
10. MURPHY, John b. 18 Mar. 1844, Cork County, Ire.; m. 3 Sept.  
1872; d. 11 Jan. 1937, Wichita, Ks.
11. LAWRENCE, Cynthia Jane b. 1852, Missouri; d. 4 Nov. 1919,  
Wichita, Ks.
12. TROUTMAN, Jonas James III b. 22 Feb. 1837, Franklin County, Pa.;  
m. 10 Aug. 1873; d. 2 Nov. 1905, Caldwell, Ks.
13. CALLIHAN, Francis Elizabeth b. 12 Aug. 1854, Webster, Ill.; d.  
10 Jul. 1923, Caldwell, Ks.
14. FISCHER, John Martin b. 6 Oct. 1850, Kendall Co., Oswego, Ill.;  
m. 1876; d. 1908, Hazen, Ar.
15. BUTTERFIELD, Elizabeth b. 16 Feb. 1857, Milwaukee, Wi.; d. 9  
Feb. 1936, Springdale, Ar.
16. BIXBY, Samuel Hubbard b. 27 Sept. 1817; d. 3 July 1901.
17. AKELEY, Almira b. 21 Aug. 1821; d. 5 May 1902.
18. DUNCAN, Robert b. 8 Jan. 1823; m. 18 Aug. 1845; d. 21 Feb. 1909.
19. GARD, Rachel b. 7 Mar. 1823; d. 6 Dec. 1873.
24. TROUTMAN, Jonas James II.
25. (?), Elizabeth
26. CALLIHAN, John, of Tennessee.
28. FISCHER, George Lenhart b. 19 Jul. 1824; m. 20 Jun. 1849.
29. KRUG, Margareta B. b. 27 Jan. 1830; d. 22 Jul. 1854.
30. BUTTERFIELD, John b. 1821.
31. ZIMMERMAN, Rose Mary.

ANCESTOR CHART: Garry Haught ROBINSON, 1625 S. Green, Wichita,  
Kansas 67211

1. ROBINSON, Garry Haught b. 24 Aug. 1923, Douglass, Ks.; m.  
22 Oct. 1944, Betty Blanche BIXBY b. 18 Feb. 1923, Wichita,  
Kansas.
2. ROBINSON, Earl Henry b. 31 Jan. 1895, Cameron, Ill.; m. 8  
Sept. 1922; d. 13 Apr. 1952, Wichita, Ks.; bur. Douglass, Ks.
3. PLUNKETT, Mary Jane b. 4 Apr. 1903, Garland, Mo.; d. 15 Jun.  
1946, Wichita, Ks.; bur. Douglass, Ks.
4. ROBINSON, George Edward b. 24 May 1871, Cameron, Ill.; m.  
1893; d. 10 May 1912 Winfield, Kansas
5. HIGGANS, Wincie Edna Fred b. 12 Jan. 1871, Cameron, Ill.; d.  
24 Jun. 1918, Winfield, Ks.
6. PLUNKETT, Garry N. b. 22 Mar. 1870.
7. ALEXANDER, Lillie Blanche b. 1855, Goodson, Mo.
8. ROBINSON, Daniel Dean b. 1 Sept. 1849, Warren County, Ill.;  
m. 27 Jan. 1869; d. 19 Apr. 1949, Winfield, Ks.
9. SHELTON, Zerilda E. b. 23 Apr. 1853, Warren County, Ill.; d.  
14 Feb. 1886, Cameron, Warren County, Ill.
10. HIGGANS, Henry b. Ireland.
11. O'RIELEY, Abigale (?).
12. PLUNKETT, Amos E. b. 30 Apr. 1836.
13. SKINNER, Jane b. 22 Aug. 1840.
14. ALEXANDER, William b. Scotland.
15. (?), Mary b. Scotland.
18. SHELTON, David R. b. 19 Sept. 1823; m. 27 May 1848; d. 28  
Sept. 1901.
19. WHITMAN, Lucy Ann b. 24 Jul. 1824; d. 31 Aug. 1897

ANCESTOR CHART: Myrtle Reeves (Kelly) BELL, 3140 N. Woodland,  
Wichita, Kansas 67204

1. KELLY, Myrtle Reeves "Reva" b. 18 Aug. 1913, Rudy, Ar.; m.  
13 Dec. 1933, Rudy, Ar., Blue Springs Twp. to Hugh Wilber  
Bell b. 27 May 1912, Rudy, Ar.; d. 29 Jan. 1949, Mulvane, Ks.
2. KELLY, Frank Quickman b. 21 Apr. 1881, Rudy, Ar.; m. 24 Dec.  
1902, Rudy, Crawford Co. Ar.; d. July 1941, Rudy, Ar.
3. GRAHAM, Eva Abigail b. 6 Mar. 1885, Rudy, Ar.; d. 3 Jan. 1972,  
Rudy, Ar., Crawford County.
4. KELLY, Willis Anderson b. 21 Apr. 1833, Alabama; m. Attala Co.,  
Mississippi; d. 30 Aug. 1904, Rudy, Ar.
5. GARNER, Harriet Molly b. 16 Apr. 1842, Charleston, S.C.; d.  
5 Feb. 1922, Alma, Ar.
6. GRAHAM, Wesley b. 1832, S. Carolina; m. Arkansas; d. 1931  
Rudy, Crawford Co., Ar.
7. SWEPTSON, Lucy Ann b. 7 Mar. 1857, Callaway Co., Mo.; d. 1851,  
Mountainburg, Ar.
8. KELLY, James B. b. Alabama
10. GARNER, Jesse b. 1814, S. Carolina; m. Oct 1839, S. Carolina;  
d. 1881, Rudy, Ar.
11. PARSON, Eliza Ann b. 1820, S. Carolina; d. 1870, Rudy, Ar.
12. GRAHAM, Jack b. Scotland.
14. SWEPTSON, Samuel b. 3 Mar. 1832, Kentucky; m. Missouri; d. 1903,  
Callaway Co., Mo.
15. NOBLES, Nancy b. 1841, Missouri; d. 1911, Callaway Co., Mo.

ANCESTOR CHART: Jerry Ann (Kinneear) STOUT, 1739 N. Kessler,  
Wichita, Kansas 67203

1. KINNEAR, Jerry Ann b. 23 Dec. 1942, Muskogee, Ok.; m. 17 Dec. 1966, Newkirk, Kay Co., Ok. to Bobby Ford STOUT b. 8 July 1932, Russellville, Alabama.
2. KINNEAR, Harry Collins b. 22 Jun. 1911, Bridgeport, Lawrence Co., Ill.; m. 13 Feb. 1933, Ok.; d. 13 Aug. 1964, Claremore, Rogers Co., Ok.
3. ROLLINS, Elizabeth Lovina b. 25 May 1913, Tulsa, Ok.; d. 18 Jul. 1950, Kansas City, Ks.
4. KINNEAR, Parker Rufus b. 4 Jul. 1878, Franklin, Venango Co., Pa.; m. 10 Mar. 1909, Vincennes, Knox Co., Ind.; d. 20 Oct. 1918, Drumright, Creek Co., Ok.
5. THARP, Hallie Iva b. 4 Aug. 1891, Birds, Lawrence Co., Ill.; d. 4 Aug 1969, Claremore, Rogers Co., Ok.
6. ROLLINS, Marion Edward b. 12 Feb. 1874, Perry Twp., Putnam Co., Ohio; m. 26 Dec. 1903, Ney, Defiance Co., Ohio; d. 19 Apr. 1962, Oklahoma City, Ok.
7. BUNGARD, Della Viola b. 18 Sept. 1886, Defiance Co., Ohio; d. 14 Oct. 1977, Drumright, Creek Co., Ok.
8. KINNEAR, Rufus Parker b. 30 Apr. 1840, Franklin, Venango Co., Pa.; m. 1860, Pa.; d. 7 Jan. 1907, Newton, Jasper Co., Ill.
9. SCOTT, Cordelia Victoria b. 4 July 1840, Franklin, Venango Co., Pa.; d. 17 Jun. 1881, Sugarcreek Twp, Venango, Pa.
10. THARP, Russell Albert
11. DARNOLD, Mary Jane
12. ROLLINS, Jonathan b. ca. 1821, Ohio; m 17 Jul. 1860, Paulding Co., Ohio; d. ca. 1878, Perry Twp., Putnam Co., Ohio.
13. BARKER, Lovina b. ca. 1844, Ohio
14. BUNGARD, Robert Benton b. 14 Jun. 1853; d. 14 Nov. 1918.
15. CROZIER, Mary Elizabeth b. 9 Dec. 18\_\_; . 29 Jan. 1929.

ANCESTORCHART: Evelyn M. (Slinkard) ACTON, 3158 Bennett, Wichita  
Kansas

1. SLINKARD, Frederick M. b. 3 May 1903, Greeley, Ks.; m. 5 Sept. 1931, Burlington, Ks. to Mary Athalene Barnow b. 12 Nov. 1909, Gove City, Ks.; d. 30 Mar. 1982, Wichita, Ks.
2. SLINKARD, James Monroe b. 17 Feb. 1870, Koleon, Ind.; m. 5 Aug. 1891, Osawatomie, Ks.; d. 13 Apr. 1939, Garnett, Ks.
3. TICE, Arthamanda b. 23 Oct. 1873, Washington Co., Ohio; d. 5 May 1962, Garnett, Ks.
4. SLINKARD, Alexander b. ca. 1848; m. 24 Mar. 1870, Bloomfield, Indiana.
5. DOUGHERTY, Sophia Elizabeth b. 17 May 1854, Youngstown, Mahoning Co., Ohio; d. 2 Feb. 1919, Pueblo, Pueblo Colo.
6. TICE, Solomon Miller b. 26 Jan. 1840, Mariette, Washington, Ohio; m. 17 May 1869; d. 30 Jun. 1932, Garnett, Ks.
7. WILLIAMSON, Malinda b. 1 Jan. 1844 Washington Co. , Ohio; d. 3 Dec. 1919, Garnett, Ks.
8. SLINKARD, Henry b. ca. 1804, Lincoln Co. North Carolina; m. 20 Jul. 1830; d. Nov. or Dec. 1872, Greene Co. , Indiana.
9. STORMS, Margert Ann b. about 1810, Ohio.
10. DOUGHERTY, Wilson
11. BEAIRD/BAIRD, Katherine
14. WILLIAMSON, Moses
15. TICE, Sida

QUERIES WILL BE USED AS SPACE PERMITS. Please limit your query to 50 Words or less. Type or print, if possible. Capitalize all Surnames but not given names. Give a date, location or event. Please read your query before mailing. If your query cannot be understood, we will not publish it. Each member is allowed two queries per publication; non-members, one query if space permits. Mail to Attention of Query Editor to address shown inside Register cover.

18283-17 SLINKARD/DOUGHERTY/ACTON...Need information about Alexander SLINKARD and parents. Alexander m Sophia Elizabeth DOUGHERTY, 23 mar. 1870, Kolen, Ind. (Green City) s. James Monroe b.17 Feb.1870; dau Lola Belle b. 12 Jan.1871. They were div. ca 1871 or 1876 in Kolen, Ind. or Kans. Mrs Evelyn SLINKARD ACTON, 3158 Bennett, Wichita, Ks. 67217.

18283-18 JONES/PLEASANTS/COBERLY/BALAY/CASIDA...Did William, James, Alfred, Jacob JONES migrate to Ks. from Johnson Co. Ind? Fa. William JONES, mo. name ?. Sisters, Elizabeth PLEASANTS; Sina COBERLY; Nancy JONES BALAY, w of B.W. BALAY, Owen Co. Ind. d. Morgan Co. Ind. 4 Oct. 1894. fa. pioneer Methodist Min. rode circuit in Mo., Ks., Ind. Arbelle OGLES CASIDA, Rt. 2 Box 62 Cloverdale, Ind. 46120

18283-19 PRICE/FISCHGRABE...Researching family of John Scott PRICE b.17 Mar. 1799, N.J. or Scotland. m 14 Dec. 1824 to May H. ? b. 15 Aug. 1806 in Penn. There were 15 ch. John Farnsworth, b 10 Sept. 1825, Henry Sidney; Francie Ann; Andrew Jackson; Alvin Scott; Abram Russell; Mary Catherine; Francis Hopkins; Caroline Louise; Rebecca Elizabeth; Thomas Jefferson; Sarah Jane; William Rush; Charles Willis and George Howard b.5 Mar. 1843; all born in Penn. Where and When?  
AND

18283-20 SHAFNER/PRICE/BENNETT/FISCHGRABE...Names of parents of Mary Ann SHAFNER b. Ohio, when and where? m John Farnsworth PRICE b.10 Sept. 1825, Pa. Ch Ida; John Jr.; Frank and Eveline Adeline b. 17 Nov. 1853, Plainfield, Well Co. Ill. m Mathew Madison BENNETT 14 Nov. 1878, Russell, Ks. d. 10 Aug. 1920, Bunker Hill, Ks. Mathew BENNETT b. 21 Feb. 1856, Pendleton, Madison Co. Ind. d. 30 Oct. 1927 Ellsworth, Ks. Two brothers Charles and William, Pendleton, Madison Co. Ind. Need dates of birth, marriage, death of both. Who were their parents? Dates and places of b, m, and d. Elizabeth FISCHGRABE 5148 Walnut, Lynwood, Ca. 90262

18283-21 GARRETSON/WILSON/BLACKBURN...William GARRETSON m Sarah WILSON, lived in Bedford Co. Pa. in early 1800's. Need dates of their Birth, Marriage, Death.  
AND

18283-22 HAMMER/BLACKBURN...Michael HAMMER (ca 1760-1840) m. Margaret ? Lived Napier Twp. Bedford Co. Pa. Need Margaret's maiden name and dates of their Birth, Marriage, Death.

AND

18283-23 HELM/BLACKBURN...Fredrick HELM (b. ca 1777) m. Elizabeth ? b. ca 1787 lived Bedford and/or Somerset Co. Pa. Need Elizabeth's maiden name and dates of their Birth, Marriage, Death. Exchange Info-Robert BLACKBURN 623 S. Crestway Wichita, Ks. 67218

18283-24 BROOKSHIER/JACKSON/DOLES/FOX/TERRELL...Charles Abron BROOKSHIER B. 17 Jan. 1930, Cromwell, Ok. parents, Vernon Victor BROOKSHIER and Lillie Bell JACKSON, m Margaret Johanna DOLES (Phoebe Ann FOX) b. 17 Aug. 1933, Joplin, Mo. parents Clarence Edward FOX and Essee Audry TERRELL; adopted from Jasper Co. Mo. orphanage by Paul E. and Mary F. DOLES, 1937. Info wanted on Halfway House near Wichita, Ks. operated by Phoebe Harton FOX, CA 1899, Margaret J. BROOKSHIER 4129 Main St. Campo Seco, Ca. 95226

18283-25 GILTNER...I am interested in any info on Jacob and/or David GILTNER. They are from Jefferson Co. Ind. and vicinity. Looking for Birth and Death records of both. Gary D. GILTNER, 404 W. Pawnee Apt. 102 Wichita, Ks. 67213

# QUERIES

18283-26 JOHNSON/LUSK...Searching for parents of Benjamin JOHNSON, d. Richland Co. S.C. 1805. His wife Ann and ch. Elizabeth, Unity, Joseph, John C. and Dorcus, who mar. Jesse HUGHES(my great,great,great grandparents). Jeanne LUSK 406 Lake Front Dr. Warner Robins, Ga. 31093

18283-27 GOFFINET/MAILLET/GAUDETTE...Have info about ancestry of Francois(Frank) GOFFINET and his wife Marie Victoire MAILLET who settled in midwest Ks. ca. 1875. Will share info with the decendants of that couple,(no charge of course.)Micheline GAUDETTE, 8 Wyckoff Ave. Holyoke, Mass. 01040

18283-28 BLAND/DYER/HOOVER/TETER ...Need info on Caleb TETER,b. ca. 1833 Pendleton Co. W. Va. ,son of Johnson and Rachel BLAND TETER ,mar 31 Dec.1829 Pendleton Co. W. Va. Caleb TETER mar 14 Aug.1856 Hannah DYER HOOVER b. ca 1837-38 Pendleton Co. W. Va. Went to Ill. Did they go to Sedg. Co. Ks. 1869 with S. H. HOOVER? Died when and where?

AND

18283-29 BLAND/NELSON/TETER...Adam or Adison"Ad." TETER, b. ca 1845 Circleville, Pendleton Co. W. Va. mar.17 Feb. 1873 Mary(Mollie) Elen NELSON, b.2Apr. 1857 Pendleton Co. W. Va. d. 17 June 1941 near Marshall, Ok."Ad", son of Johnson and Rachel(BLAND) TETER , d. when and where in Ks?

AND

18283-30 BLAND/HARMAN/MILLER/TETER...Need info on Sarah TETER, b. 1832 Pendleton Co. W. Va. mar Joshua HARMAN 4 Feb. 1858, Pend. Co. son of Isaac HARMAN and Sarah C. MILLER or Mary ?. She was dau. of Johnson and Rachel (BLAND) TETER.

AND

18283-31 BLAND/HARMAN/TETER... Margaret(Phoebe) TETER b. 1832 Pendleton Co. W.Va. Dau. of Johnson and Rachel(BLAND)TETER, mar. 22 Sept. 1843, Simeon HARMAN, b. 22 Aug. 1834 Pend. Co. bro. Joshua HARMAN, d. 30 Oct. 1927, Ringwood, Major Co. Ok. When did she die? Simeon later mar. her sister, Jane"Jennie", b ca 1839,Pend. Co. d. 1932, Ringwood, Ok. mar. when?...Joy H. ROBERTSON R.R. 4,Box 44 Enid,Ok.73701

18283-32 GIRTY/MUNGER/BRUMER/GAUVREAU/McLANE...Searching families of GIRTY,MUNGER, BRUMER,GAUVREAU. Sarah GIRTY, dau of Simon Jr. and Catharine MALOTT GIRTY b. 18 Apr. 1791, Malden Twp. Essex Co. Ontario, Canada. d. 15 Jan. 1868 home of her dau, Mrs. Phillip BRUMER, near Harlem,Winnebago Co. Ill. mar. Joseph MUNGER 1807. They had 13 ch. Sister Ann GIRTY mar. Pierre GAUVREAU. Was Darius Sales MUNGER of Wichita, Ks. Sarah's son? .....Sue N. McLANE ,R.R. 1 Cawker City, Ks. 67430

18283-33 WETTACH/BULLARD..Amil WETTACH b. 1 Mar. 1846, Switzerland. Immigrated Stark Co. OH. about 1850, lived 1025 No. Topeka, Wichita, Ks. in 1921. Earlier in Cimarron, Ks. Did he have descendants? When did he die?...Francis W.BULLARD, 2466 Dellwood Ave. Medford, OR. 97504

18283-34 HUTCHINS/CLEMENTS/KRATSCH...William J. HUTCHINS and wife Carrie moved from Joliet, Will Co. Ill. to Wichita between 1884-1890, along with William's mother Hannah(CLEMENTS) HUTCHINS. What was Carrie's maiden name?...Mrs Sue A. KRATSCH; 1388 Summit Circle W. St. Paul, Mn. 55118.

Mr. John H. Marvin, a new MHGS member, would like to correspond with anyone researching John W. and Martha (Garrett) James, early settlers in Salem twp, Sedg. Co., Kansas (1870) Also Edwin Ruthven Ross who married Carrie James, their daughter. Write John H. Marvin, 2039 Irwin Place, Madison, Wisconsin. 53713

Dorothy Dearth, Query Chairman

# SURNAME INDEX

All Surnames listed except those lists that are in alphabetical order

ACTON	89,92	CARVER	86	GALLGHER	76
ACUFF	69	CASIDA	92	GARD	87
ADAMS	71,75,76	CHISM	83	GARNER	88
AKELEY	87	CLARK	86	GARNETT	69
ALEXANDER	88	CLEMENTS	93	GARRETSON	92
ANDRUS	74	CLYMER	71	GAUVREAU	93
ASBEARSON	82	CRIPPEN	83	GILTNER	92
ATWOOD	77	COBERLY	92	GIRTY	93
BABCOCK	82	COLPRITT	86	GLASGOW	82
BAIRD/BEAIRD	89	CORNELL	84	GOUDETTE	93
BAILEY	77	CRAIN	82	GRAHAM	88
BAKER	69,75	CRANE	69	GRAVES	77
BALAY	92	CRAWFORD	69	GROSS	73
BALDWIN	75	CREASE	77	GROVE	74
BARKER	89	CREASY	87	GULLIFER	77
BANKS	74	CRIPPEN	83	HAGER	70,77
BARNES	75	CROW	76	HALE	73
BARRETT	69	CROZIER	89	HALL	82
BARWISE	70	CULLISON	73	HAMILTON	69
BEADLE	70	DALBERTZ	69	HANDLEY	75
BEELE	82	DANNENFILSER	73	HARDESTY	62
BELL	14	DARNOLD	89	HARLAN	83
BENNETT	92	DAUTRICH	83	HARMEN	93
BERGGREN	82	DAVIS	69,83,86	HASTINGS	73
BEUCHARD	74	DETANTE	77	HASTY	69
BEVIS	69	DEWEESE	82	HAWKS	74
BIDDLE	75	De WITT	76	HAWORTH	72
BIEHN	75	DILLETT	70	HAYS	84
BIGELOW	74	DILLON	76	HELM	92
BINKLEY	83	DOLES	92	HENDERSON	77
BIXBY	87	DONAHOE (HUE)	85	HEPNER	69
BLACKBURN	92	DePAY	76	HESS	82
BLAND	93	DOUGLAS	71	HIGGANS	88
BLASS	74	DOUVIELLE	86	HILL	84
BLAZER	84	DOYLE	83	HILTON	86
BOWEN	83	DRAKE	70	HINTON	70
BREED	87	DUNCAN	87	HOLDERMAN	72
BRICKLEY	74	DUNN	70	HOBBS	77,82
BROOKSHIER	92	DYER	75	HOLLAND	82
BROWN	74	EDMISTON	77	HOOVER	93
BRUNER	93	ELARSTON	82	HOUSER	73
BUCK	77	ELLIS	77	HUFFMAN	89
BUCKINGHAM	69	ENGLES	87	HULL	83
BULLARD	93	ENYART	73	HUNSAKER	70
BUNGARD	90	EWING	72	HURST	83
BURDUE	84	FIELDS	69	HUSTON	86
BURROWS	75	FISCHER	87	KASL	82
BUTLER	71	FISCHGRABE	92	KEITH	74
BUTTERFIELD	87	FITZGERALD	83	KELLOGG	70
BYSE	82	FLORENCE	72	KELLY	88
CALLIHAN	87	FLOWERS	73	KELSEY	82
CANARY	82	FOWLER	72	KING	83
CAROWTHER	70	FOX	92	KINGLSEY	83
CARR	86	FRANKLIN	57	KINNEAR	89
CARTER	83	FRENCH	75	KRATSCH	93

# SURNAME INDEX

(J's follow K)

KRUG	87	RAYBURN	69	TUTHILL	82
JACKSON	92	READEN	69	VANNER	86
JAMES	71	REECE	69	WAITE	82
JENKINS	83	REEVES	88	WALTON	83
JENN	86	REILLY	73	WARD	83
JENNINGS	70	ROBINSON	88	WAY	82
JOHNSON	74,76,93	ROLLINS	89	WAYLRIGHT	70
LANIER	85	ROSS	86	WELDAY	76
LAMB	77	SATCHEL	77	WELLS	86
LANKFORD	84	SCHERER	85	WETTACH	93
LAWRENCE	87	SCHLOSSER	76	WHITMAN	88
LAWS	69	SCOTT	72,89	WILLIAMS	82
LEEP	74	SEBASTION	70	WILLIAMSON	89
LEMMONS	83	SELIG	72	WINTHROP	85
LITTLE	83	SEWARS	82	WISLEY	77
LISS	77	SEXTON	83	WOOD	69,82
LOWRANCE	74	SEYMORE	86	WRIGHT	83
LUTHER	73	SHEELS	82	YOUNG	77,82
MAILLET	93	SHELTON	88	ZIMMERMAN	87
MAPLE	77	SHITES	75		
MARTIN	93	SHORE	83		
MASON	83	SHROUT	74		
MCCARTY	69	SIMMONS	76		
MCCLASKEY	83	SIMS	74		
MCCONAHA	86,87	SKINNER	88		
MCCOIN	86	SLINKARD	89		
MCCORMICK	69	SMITH	72,73		
McFARLANE	83	SPARKS	70		
McILVA IN	76	SHAFFNER	92		
MILLER	84,86,93	SHOUGH	77		
MOODY	72	SHUMWAY	73		
MOORE	73	SPARR	83		
MONETT	83	SPAUN	70		
MORSE	82	STALEY	69		
MUNGER	93	STEVENS	69,83		
NAUGHTER	70	STIVER	70		
NEAL	74	STORMS	89		
NEIL	82	STOUT	89		
NELSON	93	STRATFORD	72		
NOBLES	88	STRICKLAND	77		
NORRIS	70	STRUBLE	70		
O'BRIAN	80	STUDLEY	84		
O'RIELEY	88	SWEPTSON	88		
ORDWAY	83	TABLER	87		
OSTER	84	TENBRINK	69		
PARSON	88	TERREL	86,92		
PAULSON	73	TETER	77,93		
PEARSON	69	THARP	89		
PERDUE	85	THOMPSON	83		
PHELPS	82	THORNBURG	77		
PLEASANTS	92	THUMA	74		
PLUNKETT	88	TICE	89		
PRESSBERGER	70	TRAVIS	73		
PRICE	92	TROUTMAN	87		
PURCELL	83	TUDOR	70		

Send in your  
Queries and  
material to  
be published  
in the next  
REGISTER  
by October 1



## SOMETHING MORE

We are most fortunate to have received permission to publish the Quaker Monthly Meetings in Kansas, which gives the dates from time of establishment to discontinuance or if continued at present time. We thank Mrs. Helen Wood, Curator at Friends University for making these records available to us. If you are researching Quaker ancestors be reminded that Friends University Library is a good place to do your searching.

CLARIFICATION: In the last issue of the Register, Vol XVIII, no 1 in the story about "My Captive Grandmother", the Indian Chief was given the name Journeycake and his daughter Johnnycake. The correct name was Journeycake. Sorry!

THANK YOU to the Publications Committee and the Assistant Editor, Margaret Tharp for all the good help in making up the Register. Those typing included Cora Francoeur, Blanche Craft, Marilyn Mayer, Sandra Wilson, Lucy Lee Knutsen and Dorothy Dearth. Dorothy is our Query Editor, too. Also, thank you to all the contributors of information and material for publication. If it does not appear in this issue, we did not have room this time but will use in later issues.

Be sure to attend the Seminar ! The speaker comes to us with very good recommendations. His family has long been associated with Wichita and a sister, Mrs. E.W. Brunk, still lives here. He is a Quaker and has donated part of his library to Friends University. Mr. Clifford Neal Smith is a member of Sons of the Revolution Soc. and many other societies. This should be an informative meeting.

This was given to me some time back, I would like to share it with you. "We have never seen a job description for editors, but if there was one, it might read "Wanted: men and/or women with interest in genealogy to compose, assemble, edit, print and collate genealogical information. Hours-- uncertain; Pay--satisfaction of doing a necessary task; experience-- desirable but not essential (on the job training available). Should have thick skin and be able to field criticism without becoming depressed and to avoid getting swell-headed when a word of praise comes along."

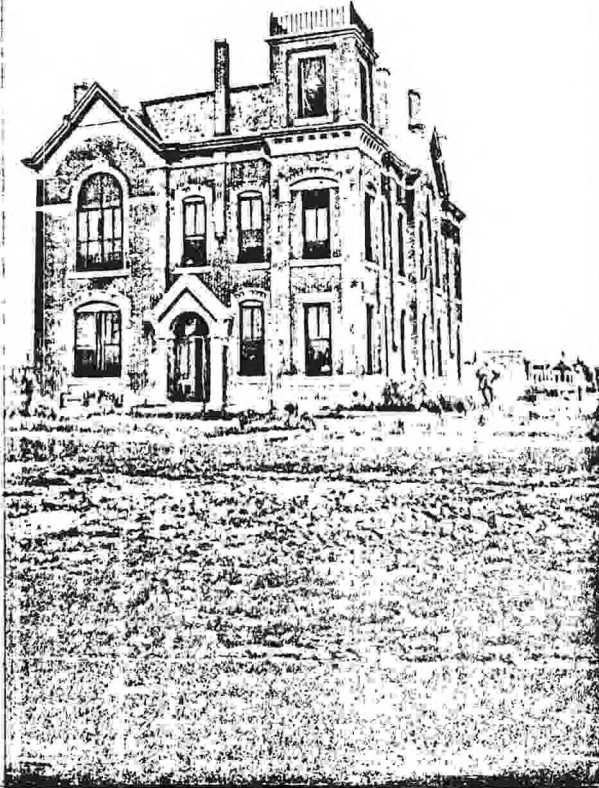
We are compiling a list of all the libraries and places that have genealogical information where one can research in our area. This will include adjoining states within 200 mile radius. The plans are to publish these in the November Register. If you know of places that you think especially helpful and with considerable information, please send or call us.

---

THIS is a story about four people named Everybody, Somebody, Anybody and Nobody. There was an important job to be done and Everybody was sure that Somebody would do it, Anybody could have done it but Nobody did it. Somebody got angry about it, because it was Everybody's job. Everybody thought Anybody could do it. Nobody realized that Everybody wouldn't do it. It ended up that Everybody blamed Somebody when Nobody did what Anybody could have done. submitted by Merl Seavey

# Advertising

House, Meade, Kansas.



Opportunities to Discover and Illustrate  
Your Genealogy and Family History

## WICHITA POSTCARD CLUB 6th Annual POSTCARD SHOW

Saturday October 22 10:00 AM - 6:00 PM

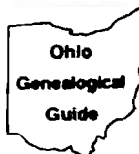
Sunday October 23 10:00 AM - 5:00 PM

All Saint's Gymnasium, 3313 Grand, Wichita.  
(Across from Saint Joseph Hospital)

Free Admission

Free Parking

**SPECIAL SALE:** MIDWEST HISTORICAL & GENEALOGICAL REGISTER  
VOLUMES XIV and XV. . . \$6.00 pp Complete  
\$2.00 pp Single copy  
Volume XV, Issue 2 has Topical Index of Registers



### RESEARCH IN OHIO

GENEALOGICAL RESEARCH IN OHIO'S 88 COUNTIES

EXPERIENCED CERTIFIED GENEALOGIST; REFERENCE LIBRARIAN

EDITOR FOR OHIO GENEALOGICAL SOCIETY'S REPORT. AUTHOR OF OHIO

GENEALOGICAL PUBLICATIONS. SEND SASE FOR RATES WITH DESCRIPTION

OF PROBLEMS TO:

CAROL WILLSEY BELL, C.G.  
4649 YARMOUTH LANE  
YOUNGSTOWN, OHIO 44512

4x

# Advertising

## OHIO RESEARCH

Statewide Genealogical Record Researching  
Send large SASE for more information & rates

W. Louis Phillips, C.G. R.S.

P.O. Box 24111  
Columbus,, Ohio 43224

4x

TRI-CITY GENEALOGICAL SOCIETY...Rt. 1, Box 5006, Richland, Wa.  
1850 Fed. Census of Illinois...includes: 99352  
Gallatin,, Henry, Johnson , Saline Cos.....\$5.50 pp, each.  
Hancock Co....\$10.50 pp. 1880 Census, Washington Territory--  
Whitman & Walla Walla Counties....\$5.50, each. Yakima Co...\$3.50  
Membership..\$6.00 year includes Quarterly.

St. Louis Genealogical Society, 1695 Brentwood Blvd.Suite 203  
St. Louis, Missouri 63144  
Membership..\$7.00 year...JOIN US! Includes 40 page Quarterly  
and Monthly NEWS 'n' NOTES; Catholic Marriages..St. Louis,1774-  
1840; Economical Research Forms, send long SASE for information.  
For Sale:"AnQUESTors, guide for tracing Family Tree"...\$3.85pp  
TRACING Family Trees in 11 States; Covers Ill, In, Mo. Ky, N ,  
SC, VA,OR,TE.,GA,PA...\$8.00 p.p. Mo. residents add 4.62% tax.

SOUTHWEST OKLAHOMA GENEALOGICAL SOCIETY, BOX 5044, Lawton,Ok.  
THE TREE TRACERS, 50 page Quarterly. 73504  
Original records. Free Queries & Yearly Index MEMBERSHIP \$8.00.

SANTA BARBARA COUNTY GENEALOGICAL SOCIETY, P.O. Box,1174,Goleta,  
Ca. 93116-1174  
"ANCESTORS WEST" Quarterly: Mar.,June. Sept.,Dec. Deadline for  
submission of material: Feb.1,May 1, Aug.1, Nov.1.Free queries.  
Single copies and back issues \$2.00. Non-member subscriptions  
\$6.00 year. Annual membership dues, including Quaterly..\$15.00



CAR-DEL PUBLICATIONS  
BOX 73  
LUDLOW, MA 01056-0073

CAR DEL SCRIBE is  
PUBLISHED BI-MONTHLY

MORE than 350 QUERIES

GENEALOGICAL HOBBY NOTES, BOOK REVIEWS, INDEX

Single copy, \$2.00 SUBSCRIPTION--\$7.50 yr. U.S.A.

COMING SOON. . REPRINT OF 1885 Portrait and Biographical Album of  
Sedgwick County, Kansas. . Containing Portraits and  
Biographical sketches of Citizens of the County.