



MIDWEST Historical and Genealogical REGISTER

*VOL. 53, No. 3
FEBRUARY 2020
WICHITA, KS*

MIDWEST HISTORICAL & GENEALOGICAL SOCIETY, INC.

P.O. BOX 1121, WICHITA, KANSAS 67201

<http://mhgswichita.org>

info@mhgswichita.org

(316) 264-3611

ISSN 0271-8685

BOARD OF DIRECTORS

President Rex Riley president@mhgswichita.org
Vice-President **OPEN** programs@mhgswichita.org
Secretary Michelle Pickett secretary@mhgswichita.org
Treasurer Jim Scharnhorst treasurer@mhgswichita.org
Librarian Julia Langel library@mhgswichita.org

COMMITTEE CHAIRS

Alert Editor Micki Wright Stephans alert@mhgswichita.org
Building and Grounds **OPEN** info@mhgswichita.org
Membership Bev Jackson members@mhgswichita.org
Publicity Francene Davis Sharp publicity@mhgswichita.org
Register Editor Ann Hathaway Boll register@mhgswichita.org
Technology Vincent Hancock tech@mhgswichita.org



The **MIDWEST HISTORICAL & GENEALOGICAL SOCIETY, INC.**

is a non-profit, educational organization

with a research library located at 1203 North Main, Wichita, Kansas.

Hours are 9:00 AM to 4:00 PM Saturdays and Tuesdays, unless otherwise notified.

Correspondence with the Society should be mailed to PO Box 1121, Wichita, KS, 67201.

Address membership dues to the attention of the Membership Chairman.

Cover drawing by Charles Sanderson

House drawing by Sharon Korst

The Register is published quarterly by the Midwest Historical & Genealogical Society, Inc. to provide information about genealogy and regional history to its members and interested parties.

Publication mailing dates: May 15, August 15, November 15, and February 15.

Back Issues: Recent issues are available for \$2.50 each, postpaid.

Membership: Includes one issue of the Register each quarter. Dues received after the publication date will receive back issues for that year with the next regular mailing.

Membership Year –

April 1 through March 31

Student (17 & under)	\$10.00 / \$20.00
Libraries	\$15.00 / \$25.00
Individuals	\$25.00 / \$40.00
Couples	\$30.00 / \$45.00
Sustaining	\$50.00

Lifetime Membership Fees

One time only

Life (single).....	\$300.00
Life (couple)	\$500.00
Benefactor.....	\$800.00

Queries: Members may submit two queries per issue. Non-member queries are \$1.50 each or \$2.50 with a copy of the Register in which the query appears.

Submissions: Send queries and articles for publication to MHGS, Attn: Quarterly Editor. Include the date and your signature with “permission to publish.”

All material for publication is subject to editing. Every effort is made to publish accurate material. Midwest Historical & Genealogical Society, Inc. and the Editor will not assume responsibility for errors on the part of the contributor. We are not responsible for publishing rights of contributed material. MHGS does not buy articles for publication.

Advertising: Ad space is sold in 2½” x 2½” block units, 12 blocks per page. Cost for a single block is \$5.00 per issue. Contact the Editor for additional information.

Library/Office Location: 1203 N. Main, Wichita, Kansas, 67203, (316) 264-3611

REGISTER

A Magazine for members and friends interested in Genealogy

Volume 53 No. 3

FEBRUARY 2020

Table Of Contents

THE WICHITA WEEKLY EAGLE	66
NEW MATERIALS IN THE MHGS LIBRARY	70
NEW MATERIALS IN THE WICHITA PUBLIC LIBRARY	74
MARRIAGE RECORDS	78
WICHITA HISTORICAL PANEL NO. 118	82
WICHITA HISTORICAL PANEL NO. 119	83
INDEX OF DIVORCES.....	84
OWENS PEDIGREE CHART.....	87
THE WICHITA WEEKLY EAGLE	88
UPCOMING MHGS EVENTS	92
INDEX.....	93
PUBLICATION ORDER FORM.....	96

Library/Office Location:

1203 N. Main
Wichita, Kansas, 67203
(316) 264-3611

The Wichita Weekly Eagle

Thursday, May 1, 1873, page 3

Column 1

CITY AND COUNTY NEWS.

Services at the Catholic church next Sabbath.

The health of our city is extremely good at present.

Hall, at the Oyster Bay, "sets up" splendid ice cream.

The latest term for killing a man is "Modoced him."

Capt. Folks and Major Abbott, of Oxford, called on us this week.

On the outside of this issue will be found an article entitled Wichita.

The Methodist minister of this place is against voting railroad bonds.

The recent rains seemed to make everybody happy and business more brisk.

The office of the city clerk can be found at the store of J. F. Nessly & Son.

Last Sabbath was rather a damp day for the display of spring styles and furbeloes.

Greiffenstein bought a very nice deer to add to the collection of animals in his park.

W. P. Gossard, Mr. Selig and Mr. Petre, of Eldorado, called on the EAGLE this week.

The Baptist Sunday school meets on Sabbath morning, at 9 o'clock, at the school house.

Mr. Hoffman, traveling agent of the *Atchison Champion*, spent last Sabbath in our city.

Captain Darling, surveyor, was registered at the Douglas Avenue House a part of this week.

The display of crockery ware at Caldwell & Titsworth's is very nice. They have a large stock.

Two buffalo calves were shipped by the express company to Logansport, Ind., for a menagerie.

Col. Woodbury has his boring machine, derrick and everything completed ready to bore for coal.

The senior of this paper has gone on a senatorial excursion to the land of "cinnamon seed and sandy bottom."

The *Parsons Surprise* is the last thing that has surprised us in the newspaper line, and it is surprisingly smart.

When you go to Fuller's ice cream saloon, just take a look at that nice carpet on the floor. It was bought at Emanuel's bazar. [sic]

Mr. Munger has returned with his family for a visit to western New York. He reports the Kansas fever raging badly in that country.

Our valley has been visited with two or three copious showers of rain during the past week, to the great joy of the farmers generally.

Our city band went to Augusta last Saturday and furnished music for the Odd Fellow's anniversary, which was celebrated on that day at that place.

Schattner & Short have added another story to their building, which, we understand, is to be occupied by Mr. Rupp. "The keno is supposed to be correct."

Hills & Kramer will move the building which they are at present occupying, and build a brick building 25x80, two storied high, as soon as material can be had.

The board of trade will hold their regular monthly meeting in Eagle hall, on Monday evening of next week. Let there be a large turn out of our citizens.

The *Topeka Commonwealth* arrives here at 12 m. [sic] the same day it is published. This is through the enterprise of its publishers, and is duly appreciated by its readers.

Mayor Hope, Hon. J. R. Mead, Col. Greiffenstein and Mr. Adams have been to Topeka and Kansas City this week, on business pertaining to the interests of this city.

Warner's circus is coming – will be here about the last of this month. The weather will be warm enough so that you can sell your cook stove and take the whole family.

Mr. Cline, one of the gentlemen who has charge of the stock yards of A. T. & S. F. R. R., is in our city superintending the repairing and remodeling of the yards at this place.

The Davis Family gave three of their entertainments at Eagle hall last week to good audiences. Their concerts are musical treats, and they never fail to be well patronized.

Episcopal services every Sabbath, at the old court house building, on Main street, at 10½ o'clock

a. m. and 4 o'clock p. m. Seats free. The public are cordially invited to attend.

Surveyor George has just finished surveying and platting a new addition for Mr. Greiffenstein. It joins his old addition on the south and extends from Lawrence avenue to Water street.

A Methodist church was organized at Caldwell by Rev. B. C. Swartz, on Sunday, April 20th. Also on the 25th, at the same place, a Presbyterian society was organized by Rev. J. P. Harsen.

Steps have been taken and the necessary committees appointed to complete arrangements for holding a Sunday school county convention, of which due notice will be given through these columns.

Mr. William Swaney, one of Sedgwick's enterprising farmers, is planting two acres of cotton and four acres in castor beans, which he proposes to cultivate in the best manner possible, and give both a fair test this season.

Parties largely interested have commenced action against the city to restrain the collection of sidewalk taxes. Those questioning the validity of the acts of the "city dads" will call in the aid of the court to tell them all about it.

The new hotel is progressing finely; everything is ready for the brick work, and we understand the brick are being burned now, so that within twelve or fifteen days the sound of the trowel will be heard to ring out from off its walls.

The Crystal Vocalists will give three of their concerts in this city, at Eagle hall, on Tuesday, Wednesday and Thursday evenings of next week. All lovers of good vocal and instrumental music will govern themselves accordingly.

By referring to the business directory, in this paper, under the head of physicians, will be seen the professional card of Mr. McAdams. The doctor has taken up his abode permanently in our city and is building himself a residence.

The Kansas *Folio*, a monthly journal of music, art and literature, is published by Hoffman, Brown & Co. of Leavenworth. It contains some choice literature and choice music. It is neatly printed and well worth its price per year, \$1.50.

The committee which was appointed to look after the interests of the cattle trade has about completed its work, and everything pertaining to that

interest has been satisfactorily arranged and we think that no fears need be entertained regarding it.

Steele & Levy are exclusive agents for 50,000 acres of railroad land in town 26, ranges 1 and 2 east and 1, 2 and 3 west. These lands are sold on eleven years time, with liberal deductions of cash and improvements. See their advertisement.

A young lover who sang and played before his young lady's house for two mortal hours Tuesday night, was electrified after a short pause, by a cordial "Thank you," gracefully pronounced by the "other feller," who appeared at the window.

In view of the fact that St. Louis is to have a meeting of the western and southwestern members of the present national congress convene there on the 13th of May next, for the purpose of presenting to said body the wants of the great west, would it not be well for us to send at least as lobbyists [sic] some two or three of our representatives? If so, shall we do it?

Column 2

On Friday last, Mr. McCulloch of our city received a consignment of nursery plants direct from Scotland, consisting of larch, spruce, Scotch and Hungarian firs, ash, birch, oak and elm plants, also several varieties of Holland, Portugal and Rhododendron [sic] evergreens and roses. They were shipped from Scotland on the 20th of March and were about five weeks in transit. They arrived here in good order, not a plant being injured. They were closely packed in Irish moss, in two large boxes, which secured intact from any damage or injury from the shaking of the voyage. From personal examination, we find the plants very fine and in a good healthy condition. We commend the enterprise [sic] of Mr. McCulloch in having brought these trees so very far to ornament his home in this valley, and taking this forward move in opening up a foreign traffic between this outside port and a distant land, and should this experiment not prove a successful one, he has not spent a fortune in its acquisition, as the expense of the plants, six thousand in number, was only \$11.65 laid down at Wichita.

Mr. F. S. Huffaker passed through our city this week for his trading post in the territory, and reports regarding the Indians that they are ready to commence committing depredations or war on the least provocation, and as soon as the grass gets a little

better and their ponies stronger, that trouble with them may be expected. Trustworthy reports from the frontier settlements also come to us that predict and early and bloody conflict between the settlers and Indians if the government does not take immediate action and protect the settlers from the marauding of these treacherous red devils. There seems to be but one way to solve the Indian question, and that is a complete extermination of the whole race, or establish a law to put to death all or any Indians found off their reserve. We have learned one lesson, however, from their late depredations and murders, and that is, the Quaker policy is a complete failure.

The way to make a town is to help as much as possible every industry in our midst. Judiciously aid every enterprise that will help the place. If you are a property holder every new house strengthens you and it is but right that you reciprocate. Don't hide a dollar with a penny. Look ahead. Consider what is best for you in the long run. Don't be jealous. If you can draw advantage from an enterprise forwarded by an enemy, support it if it even enrich [sic] him. Should a man start up a legitimate business in an obscure part of the town, whether a friend or not even acquaintance, say a good word for him whenever occasion presents itself – it will cost you nothing and may do some incalculable good. Always remember, "bread cast upon the waters will return after many days."

We learn from Mr. J. A. Cramer, lecturer of the state grange of the patrons of husbandry, that he organized a sub-grange in Eagle township, on the afternoon of the 25th. M. Camp, master; O. M. Millard, overseer; L. C. Crawford, secretary; either of whom may be addressed at Sedgwick, Harvey county. The order now numbers one hundred granges in the state and is received with a great deal of favor among the farmers as the surest means yet devised by which they can meet and cope with monopolies and legislative corruption. We are glad to know that they are breaking ground in these western counties.

No town in the state is improving or growing more rapidly than Wichita is now. A large number of new building [sic] are springing up on every hand, and as soon as our brick makers can supply the demand for brick, the building activity will be largely increased. All the business houses now be-

ing put up are of the most substantial character, indicating confidence in the permanent growth of the city. Many of the business houses and residences being put up would be an honor to a city a dozen times larger than Wichita. They are not only commodious and substantial, but handsome and imposing in appearance.

The way to plant and cultivate cotton is to plow the ground and put it in good condition, as you would for corn. Then run a deep furrow, turn and throw the same earth into the furrow, and then back furrow on the other side, so as to form a ridge over the first deep furrow, and in this way make the furrows about four feet apart. Then open the ridge lengthways and drill the seed so as to stalk about every four inches, and cover as deep as you would corn. Cultivate by throwing the earth to the cotton as much as possible, and keep clean of grass and weeds.

The directors of the agricultural society met on last Saturday and opened and examined the different bids and proposals offered for the location of the fair grounds. After discussing several questions of minor importance, they adjourned to meet on next Saturday to view the different plats of ground offered. There was a disposition manifested to lay all personal prejudice aside and act for the good of the society. This we believe will insure the success of it in every particular.

In another column of this paper will be seen the card of Minch, Brush & Mason, wholesale dealers in hosiery, furnishing and white goods. This house does an immense business in this state through their traveling agent Mr. J. F. Gould, a gentleman who understands the business in its various branches, even to the minutest details. He is a pleasant man to deal with, and is well known throughout the state for his fair and upright dealing.

A drunken fellow was walking up Commercial street, in Emporia, quite late the other night, singing at the top of his voice, "Rock me to sleep, mother, rock me to sleep." He staggered against a policeman, who replied: "I won't *rock* you to sleep, but I'll *club* you so you will be glad to lay down and be quiet, if you don't shut up." He lost his voice immediately.

We again invite our friends of the farm to contribute to these columns. The oft repeated excuse that so many offer that they are more used to han-

dling the implements of husbandry than the pen is not a good one. Give us facts relative to farming and they will accomplish quite as much as polished phrases, and be more enduring.

Mr. J. G. Sampson, of Rockford township, brought us an embryo chicken which had four legs. Two of its legs were where its legs ought to grow, the other two were on the side of the body near the wing, and had it lived we presume it would have been able to have done a vast amount of scratching in the spring gardens.

The way to build up a town is to support every present and prospective enterprise; speak well of the churches, schools and citizens; tell everybody the hotels are good; patronize your home merchants and tradesmen, and don't go abroad to buy anything that you can get at home.

Wichita Public Schools.

Report and roll of honor for the week ending Friday, April 25th. Conditions – unexceptional in conduct; good in lessons; always present; never tardy.

HIGH SCHOOL.

Smith Hobbs,	Alonzo Devashier,
Lillie Cox,	Francis Magee,
Minnie Miller,	Ida Watrous,
Flora Redfield,	Effie Watrous,
Jos. Shearon,	Julia Clark,
Clara Carpenter,	Emma Scott.
Charley Bates,	

H. L. FEES, Teacher.

INTERMEDIATE.

Wilson Devashier,	Clara Jenkins,
Medford Devashier,	Lucy Magee,
Eugene Drew.	Rachael Royal,
Katie Alexander	Ella Weston,
Belle Egan,	Charley Watrous.
Myrtle Egan,	

LISSA W. TUCKER, Teacher.

PRIMARY.

Willie Long,	Charles Hilliard,
Willie Martin,	Clarence Woodman,
Conn Fox,	Clyde Rhodes,
Hattie McQuiston,	Eddie White,
Addie Moyer,	Elvin Herring,
Addie Rhodes,	Fred Bury,
Eva Millis,	John Patterson,
Flora Clark,	Miriam White,
Martha Stout,	Ralph Millison,
Minnie Brown,	Oscar Couch.
Charles Bury.	

LIZZE HIGDAY, Teacher.

Enrollment for year130

JNO. TUCKER, Sup't.

MARRIED.

At the M. E. parsonage, by the pastor, Rev. Stogdill, on Thursday, April 24th, Mr. H. C. Ramlow, of Park, to Miss Mary E. Day of Caneville, Kentucky.

We are glad of the privilege of chronicling the marriage of H. C., who is one of the substantial, enterprising farmers of our county, having held several positions of honor and trust in the county, the last of which was county commissioner, which position he filled ably. We wish the new couple a happy and prosperous journey through life.

DIED.

Mrs. Mary Romig, wife of Jacob Romig, deceased, of Tuscarawas county, Ohio, died April 17th, 1873, at the residence of Dr. H. C. Tucker, El Paso, Kansas.

She died of acute pneumonia, after an illness of but two days. The funeral rites are attended by a large assembly of friends, who deeply feel their loss. In her the Sabbath school cause loses a devoted friend and lifelong worker.

A traveler o'er life's pilgrimage dreary,

Lays down her rude staff like one that is weary,

To sweetly repose forever.

Tuscarawas papers please copy.



NEW MATERIALS IN THE MHGS LIBRARY

Compiled by Julia Langel

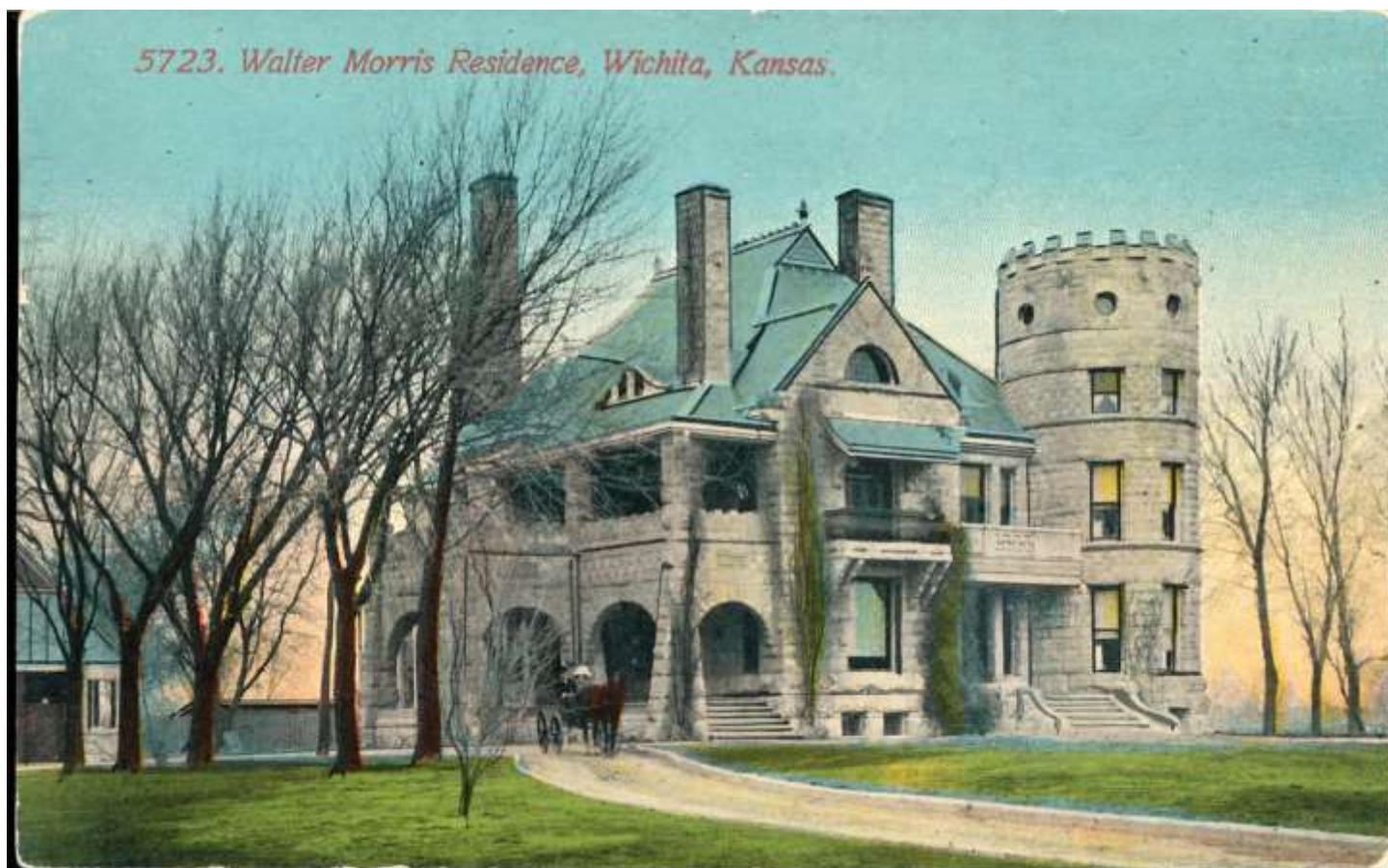
Accession No.	Pub. Date	Author	Title
A-600 027	1891		Cram's Imperial Office Directory and Reference Atlas of the United States
G-A 053	2001	Boyer, Carl	Medieval English ancestors of Robert Abell
G-B 160 V 1	1987	Finley, Rex Bird	Thomas Bird of Holmes County, Ohio, and his Descendants
G-C 136	1989	Griffin, Virginia Cope	Me and Mine in the Sunflower State
G-D 077	1936	Doubleday, John M.	Our Ancestors
G-H 154	1903		Haworths in America: Reunions of 1899 and 1902
G-M 101	1991	Monroe, James Harrison	Journey from Ross-Shire
G-S 147 Intl		Stoddard, Charles	Stoddard Tribeloid
G-S 147 N 01-28		Stoddard, Charles	Stoddard Tribeloid
G-S 147 N 29-43		Stoddard, Charles	Stoddard Tribeloid
G-S 148	1974	Kaufman, Ed. G.	The Jacob Schrag Family Record 1836-1974
G-W 092 V 01	1991	Moore, Kay Kirlin	Descendants of Roger Williams
G-W 092 V 01a	1991	Moore, Kay Kirlin	Descendants of Roger Williams
G-W 092 V 03	1991	Moore, Kay Kirlin	Descendants of Roger Williams
G-W 092 V 04	1991	Moore, Kay Kirlin	Descendants of Roger Williams
I 277	1958	Pollack, Peter	The picture history of photography: from the earliest beginnings to the present day.
I 278	1982	Newhall, Beaumont	The history of photography: from 1839 to the present
I 279	2009	Gustavson, Todd	Camera: a history of photography from daguerreotype to digital
I 280	2002	Schimmelman, Janice Gayle	American photographic patents 1840-1880: the daguerreotype & wet plate era
I 281	1980	Gilbert, George	Photography: the early years : a historical guide for collectors
I 282	1948	Johnson, Robert	The art of retouching and improving negatives and prints,
I 283	1898		Illustrated Catalogue of Photographic Equipments and Materials for Amateurs
I 284	1892		How to Make Photographs and a Descriptive Catalogue of Materials for the Amateur Photographer
I 285	1872		Illustrated Descriptive Price List of Photographic Apparatus Manufactured and Sold by E. & H. T. Anthony & Co.

Accession No.	Pub. Date	Author	Title
I 286	1856	Ellis, M. H.	The Ambrotype and Photographic Instructor or, Photography on Glass and Paper
I 287	1976	Newhall, Beaumont	The daguerreotype in America
I 288 1995	1990		The Daguerreian annual: official year-book of the Daguerreian Society
I 289	2003	Berg, Paul K.	19th century photographic cases and wall frames
I 290	2001	Kenny, Adele	Photographic cases: Victorian design sources, 1840-1870
I 291	2007	Schimmelman, Janice Gayle	The tintype in America, 1856-1880
I 292	2005	Hannavy, John	Case Histories: the Packaging and Presentation of the Photographic Portrait in Victorian Britain 1840-1875
I 293	1981	Darrah, William C.	Cartes de visite in nineteenth century photography
I 294	1999	Wichard, Richard	Victorian Cartes-de-visites
I 295	1981	McCulloch, Lou W.	Card photographs: a guide to their history and value
I 296	2006	Bogdan, Robert	Real photo postcard guide: a guide to their history and value
I 297	1981	Morgan, Hal	Prairie fires and paper moons: the American photographic postcard, 1900-1920
I 298	1972		Caring for photographs: display, storage, restoration
I 299	2010	Taylor, Maureen	Preserving Your Family Photographs: How to care for your family photographs from daguerreotypes to digital images
I 300	1986	Reilly, James M	Care and identification of 19th-century photographic prints
I 301		Rudd, David	Guide to Identifying Early Photographs: A Pocket Manual
I 301 a	2000		Dating old photographs, 1840-1929
I 301 b	2000		Dating old photographs, 1840-1929
I 302	1999	Mace, O. Henry	Collector's guide to early photographs
I 303	2013	Clark, Gary	Cased Images & Tintypes KwikGuide: A Guide to Identifying and Dating Daguerreotypes, Ambrotypes, and Tintypes
I 304	2013	Clark, Gary	19th Century Card Photos KwikGuide: A step-by-step guide to identifying and dating Cartes-de-visite and Cabinet Cards

MHGS New Books, continued

Accession No.	Pub. Date	Author	Title
I 305	2016	Clark, Gary	20th Century Photographs KwikGuide: A step-by-step guide to identifying and dating vintage photos from 1900 to 1950
I 306	2013	Clark, Gary	Real Photo Postcards KwikGuide: A guide to identifying and dating real photo postcards of the 20th century
R-060 127 V 07-10			Tyrrell Branches
R-060 127 V 11-14			Tyrrell Branches
R-060 127 V 15-18			Tyrrell Branches
R-210 CN 02	1995		Directory of St. Francis High School Graduates 1901-1995
R-210 HV 20	1987	Kaufman, Edna Ramseyer	The Thresher Table: Celebrating the First Hundred Years of Bethel College
R-210 SG 227	1998	Wichita High School East	Echoes
R-210 SG 229	1989	Jaax, Ada	St. Joseph Church, Andale, Kansas
R-210 SU 38	1992	Thurber, Brenda	Reflections of Sumner County Kansas
R-300 288	1948	Garwood, Darrell	Crossroads of America: the story of Kansas City
R-420 013 V 16	1992		Rhode Island Genealogical Register
R-420 013 V 18	1994		Rhode Island Genealogical Register
R-420 013 V 19	1995		Rhode Island Genealogical Register
R-420 013 V 20	1996		Rhode Island Genealogical Register
R-420 021	2004	Sterling, John E.	South Kingstown, Rhode Island historical cemeteries
R-420 022	2009	Sterling, John E.	Newport, Rhode Island colonial burial grounds
R-H 153	1986	Dennis, Ruth	The homes of the Hoovers
VB Beard V 03 AL Mor			Elbert Beard Jr. Collection
VB Beard V 03 AL St-Wi			Elbert Beard Jr. Collection
VB Beard V 03 NC 1			Elbert Beard Jr. Collection
VB Beard V 03 TN			Elbert Beard Jr. Collection
VB Miles V 01		Harris, Marcelyn Dora Miles	Marcelyn Miles Harris Collection
VB Miles V 02		Harris, Marcelyn Dora Miles	Marcelyn Miles Harris Collection
VB Miles V 03		Harris, Marcelyn Dora Miles	Marcelyn Miles Harris Collection
VB Miles V 04		Harris, Marcelyn Dora Miles	Marcelyn Miles Harris Collection
VB Miles V 05		Harris, Marcelyn Dora Miles	Marcelyn Miles Harris Collection

Accession No.	Pub. Date	Author	Title
Online – link in catalog	1898	Trumbull, James Russell	History of Northampton, Massachusetts, from its settlement in 1654;
Online – link in catalog	1903	Edson, Jarvis Bonesteel	Edsons in England and America and genealogy of the Edsons,
Online – link in catalog	1921	Powers, William H.	Powers-Banks ancestry: traced in all lines to the remotest date obtainable, Charles Powers, 1819-1871, and his wife Lydia Ann Banks, 1829-1919
Online – link in catalog	1933	Jacobus, Donald Lines	The Bulkeley genealogy;
Online – link in catalog	2018	Owens, Patrick J.	Picatinny: The First Century
Online – link in catalog			Pearson Photograph Collection
Online – link in catalog			Goddard Woman's Club Scrapbooks



1155 N. River Boulevard, Wichita, Kansas. Picture postcard mailed 12 July 1916.

More commonly known as Campbell Castle.

Unknown Creator, "Walter Morris House Postcard," *MHGS Digital Collections*, accessed January 28, 2020, <http://mhgswichita.org/om/items/show/1243>. Contributed by Bill Pennington.

NEW MATERIALS IN THE WICHITA PUBLIC LIBRARY

GENEALOGY COLLECTION

July through September, 2018

Compiled by Michelle Enke

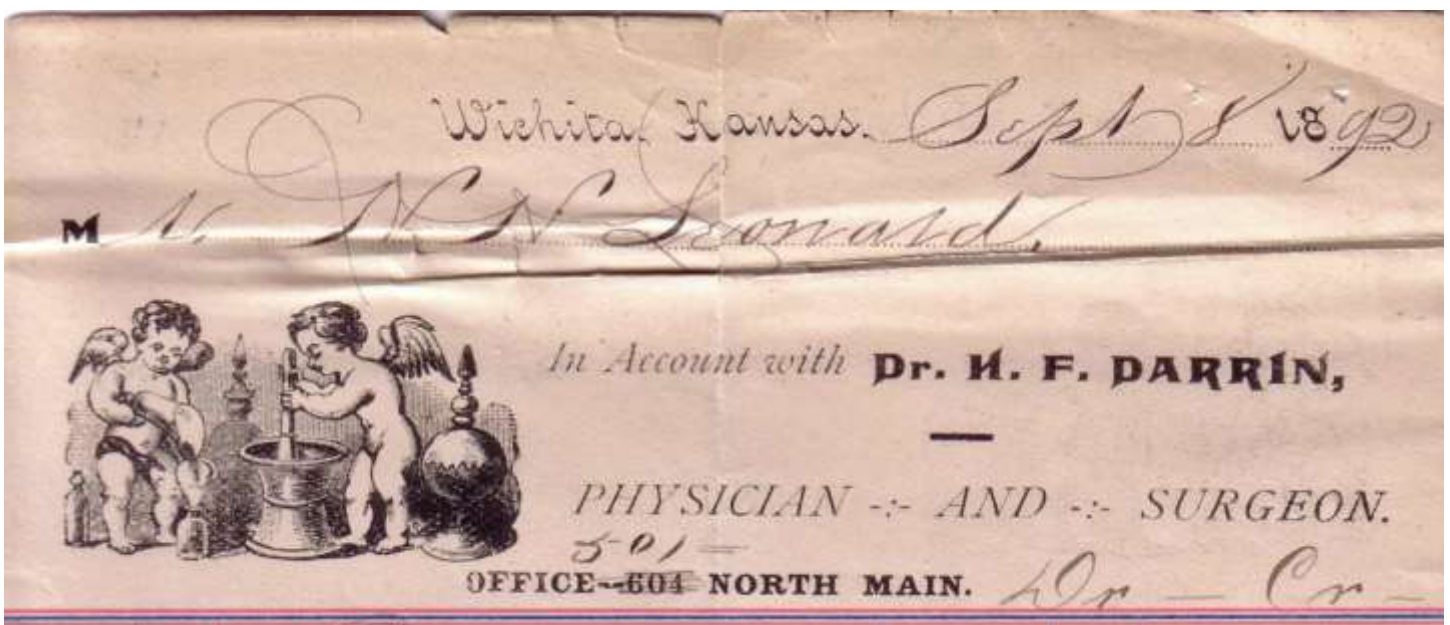
- African American Railway Workers of Roanoke: Oral History of Norfolk and Western.
(R 385.0971 SCA)
- Alias Charley Hart. (R 978.165 HAR)
- Alliance, Nebraska. (R 978.294 ALL)
- Along the Baltimore & Ohio Railroad: From Cumberland to Uniontown. (R 975.294 MCG)
- Alumni Directory Emporia State University. (R 378.781 EMP 2002)
- American Chronicle: the Autobiography of Ray Stannard Baker [David Grayson].
(R 070.92 BAK)
- American German: Story of a Wisconsin Youth Who Lives Through War Torn Germany.
(R 940.5481 RAT)
- Ann Arbor Railroad. (R 385.0971 BUR)
- Another Dalton Gang: the Story of an American Family. (R 929.2 DALTON)
- Antebellum Plantation Household: Including the Remedies of Emily Wharton Sinkler.
(R 975.7 LEC)
- Atlantic City, 125 Years of Ocean Madness. (R 974.9 LEV)
- Baltimore & Ohio Railroad in Maryland. (R 385.0971 SHA)
- Band of Brothers: E Company, 506th Regiment, 101st Airborne. (R 940.54 AMB)
- Berrien County, Georgia Marriage Records Index, 1856-1949. (R 975.8758 PAU)
- Biographical Dictionary of Kansas Artists (Active Before 1945). (R 709.781 CRA)
- Blood on the Border: the Battle of Baxter Springs. (R 973.742 HAR)
- Cancer at the University of Kansas Medical Center, 1944-1969. (R 614 HOL)
- Chesapeake and Ohio Railway. (R 358.0971 CAS)
- Class of Destiny: the 1943 Graduates of Peabody High School. (R 978.157 CLA)
- Coffee County, Georgia Marriage Records Index, 1864 to 1957. (R 975.8823 PAU)
- Commencement, Wichita State University. (R 378.781 COM 1985)
- Crete [Nebraska]. (R 978.2327 JEF)
- Cripple Creek District: Last of Colorado's Gold Booms. (R 978.858 MAC)
- Cuming County [Nebraska]. (R 978.2232 TOP)
- Descendants of Henry Messinger of Boston, 1637. (R 929.2 MESSINGER)
- Diary of Thomas Minor, Stonington, Connecticut, 1653-1684. (R 974.65 MIN)
- Dreaming with the Ancestors: Black Seminole Women in Texas and Mexico. (R 976.4 MOC)
- Emigrant Cornelius Noel from Holland to Virginia and His Descendants in America.
(R 929.2 NOEL Vol. 4)
- Family Maps of Lee County, Mississippi. (R 976.2935 BOY)
- Family of August Otto Schmidtke-Shmidt-Smith and Ettie Hannah Palmer.
(R 929.2 SCHMIDT)
- Finding Indiana Ancestors: a Guide to Historical Research. (R 929.1 FIN)
- First Century of the Methodist Church of Humboldt, Kansas: 1860-1960. (R 978.194 FIR)
- Florida East Coast Railway. (R 385.0971 BRA)
- Fort Riley: Home of the 1st Infantry Division. (R 978.129 FOR)
- Fort Robinson [Nebraska]. (R 978.293 DIC)
- Friends University Alumni Directory. (R 378.781 FRI 2002)
- Friends University: Talisman Yearbook. (R 378.781 FRI 1971 thru 1973)
- Friendswood [TX] High School Alumni Directory. (R 373.781 FRI 2002)

- Gallatin County, Illinois Newspapers. (R 977.397 SHE Vol. 1)
 Gallatin Co., Illinois Probates. (R 977.397 SHE Vol. 2)
 German Cincinnati. (R 977.178 TOL)
 German Immigrants in American Church Records: Missouri, St. Louis II, V.
 (R 943 GER Vol. 21, 24)
 German Milwaukee. (R 977.595 GER)
 Germans in New Jersey: a History. (R 979.4 LUB)
 Guarding the Overland Trails: the Eleventh Ohio Cavalry in the Civil War. (R 973.7471 JON)
 Hiram Wheeler Lewis: a Partial Auto-biography, and Life-pictures from Other Sources.
 (R 929.2 LEWIS)
 History of Georgia Railroads. (R 385.0971 JON)
 History of the Boston & Maine Railroad: Exploring New Hampshire's Rugged Heart.
 (R 385.0971 HEA)
 History of the City of Omaha, Nebraska and South Omaha. (R 978.2254 SAV)
 Improving Rural Lives: a History of Farm Bureau in Kansas, 1912-1992. (R 630.7 VAN S)
 Inscriptions From Goose Creek Burying Ground, Lincoln: Goose Creek Burying Ground, Lin-
 coln; Fairfax MTG. House Burying Ground (Friends) Waterford, Loudoun County, VA.
 (R 975.528 JEW)
 Inventing Stonewall Jackson: a Civil War Hero in History and Memory. (R 973.73 HET)
 Jewish Chicago: a Pictorial History. (R 977.311 CUT)
 Jewish Detroit. (R 977.434 COH)
 Jewish Milwaukee. (R 977.595 HIN)
 Jewish South Jersey. (R 974.9 VER)
 Johnson County, Arkansas, Marriage Records, 1853-1880. (R 976.733 ING)
 Kansas Baseball, 1858-1941. (R 796.357 EBE)
 Kansas Geographic Names: [Alphabetical Finding List]. (R 917.81 KAN)
 Kansas Newman College Alumni Directory. (R 378.781 NEW 1988)
 Kansas Physiographic Regions: Bird's-eye Views. (R 551.4 ABE)
 Kansas Relays: Track and Field Tradition in the Heartland. (R 796.42 SCH)
 Kansas State University Royal Purple Yearbook. (R 378.781 KAN 1971, 1994, & 1995)
 Kanza Yearbook. (R 378.781 KAN 1949 & 1950)
 Kapaun Mt. Carmel High School Alumni Directory. (R 373.781 KAP 1995)
 Kate [Cumming]: the Journal of a Confederate Nurse. (R 973.776 CUM)
 Kentucky 1830 Census Index. (R 976.9 SMITH D Vol. 4-6)
 Labette County, Kansas Ancestors. (R 978.196 PET)
 Lanier Family in the US: Descendants of the Immigrant Brothers John and Robert.
 (R 929.2 LANIER V.1)
 Lee's Summit [MO] High School Yearbook. (R 373.781 LEE 1991)
 Lehigh Valley Railroad Across New Jersey. (R 385.0971 HEI)
 Liwwät Böke, 1807-1882, Pioneer: the Story of an Immigrant Pioneer Woman.
 (R 977.1415 BOK)
 Lost German Chicago. (R 977.311 HEI)
 Mammoth Spring High School Yearbook. (R 378.781 MAM 1948, 1950, and 1951)
 Map Guide to German Parish Registers: Kingdom of Bavaria VIII. (R 943.5 HAN Vol. 21)
 Map Guide to German Parish Registers: Kingdom of Prussia, Hessen-Nassau I.
 (R 943.5 HAN Vol. 9)
 Map Guide to German Parish Registers: Kingdom of Prussia, Hessen-Nassau II.
 (R 943.5 HAN Vol. 10)

WPL New Books, continued

- Map Guide to German Parish Registers: Kingdom of Prussia, Westphalia I.
(R 943.5 HAN Vol. 39)
- Map Guide to German Parish Registers: Kingdom of Saxony II. (R 943.5 HAN Vol. 26)
- Map Guide to German Parish Registers: Kingdom of Wurttemberg I: Jagstkreis.
(R 943.5 HAN V. 5)
- Map Guide to German Parish Registers: Kingdom of Wurttemberg III, Schwarzwaldkreis.
(R 943.5 HAN Vol. 7)
- Map Guide to German Parish Registers: Kingdom of Wurttemberg IV: Donaukreis.
(R 943.5 HAN Vol. 8)
- Map Guide to German Parish Registers: Thuringia. (R 943.5 HAN Vol. 24)
- Maps of Early Massachusetts: Pre-history Through the Seventeenth Century. (R 911.74 DEX)
- Marriages of Atkinson County, Georgia, 1919-1950. (R 975.8822 REG)
- Menard County, 1850 Illinois Federal Census. (R 977.355 MEN)
- Midian Temple, Wichita, Kansas Directory. (R 366.1 ANC 1996)
- Miscellaneous Records from Barnwell, South Carolina 1840-1895. (R 975.776 WEA)
- Monon Railroad in Southern Indiana. (R 385.0971 LON)
- Monroe County, Missouri, Marriages, 1831-1870. (R 977.8325 MON)
- Monroe County, Missouri, Monroe City Holy Rosary Catholic Cemetery Records.
(R 977.8325 MON)
- Naturalizations of Foreign Protestants in the American and West Indian Colonies.
(R 325.73 NAT)
- Norfolk, Nebraska. (R 978.254 NOR)
- Northwestern Pennsylvania Railroads. (R 385.0971 SPR)
- Notorious San Juans: Wicked Tales from Ouray, San Juan & La Plata Counties, CO.
(R 978.825 TUR)
- Once a Hoosier: 19th Century Hoosier Ancestors Who Left Indiana for Other States.
(R 977.2 SMI Vol. 1)
- Parnassus, Wichita State University Yearbook. (R 378.781 PAR 1954)
- Pearson, Georgia, Newspaper Clippings, 1917-1925. (R 975.8822 REG Vol. 1)
- Person County, North Carolina, Marriage Records, 1792-1869. (R 975.6573 ING)
- Pioneer & Military Memorial Park of Phoenix. (R 979.173 HOR)
- Pioneers of Wiregrass Georgia: a Biographical Account of Some of the Early Settlers in the
Original Counties of Irwin, Appling, Wayne, Camden, and Glynn.
(R 975.8 PIO Vol. 1, 8, 10, 11, & 12)
- Places Near the Mountains: From the Community of Amsterdam, Virginia. (R 975.5791 PRI)
- Plain Dealer: One Hundred Years in Cleveland, 1842-1942. (R 071 SHA)
- Plains Indian Warrior's Story: Hethu'shka Washoeshay. (R 959.704 STA)
- Posey County, Indiana Marriages, 1814-1831. (R 977.234 RID)
- Railroading Around Cumberland. (R 385.0971 STA)
- Railroading in Conneaut, Ohio. (R 385.0971 BOR)
- Railroads of Chattanooga. (R 385.0971 WAL)
- Railroads of Death Valley. (R 385.0971 PAL)
- Remembrances in Wood, Brick, and Stone: Examples from the Architectural Heritage of
Shawnee County, Kansas: a Historic Preservation Project. (R 978.163 REM)
- Rev. Moses Westberry and His Descendants. (R 929.2 WESTBERRY)
- Roanoke Locomotive Shops and the Norfolk & Western Railroad. (R 385.0971 MCK)
- Rock Island Railroad in Arkansas. (R 385.0971 HIB)
- Seeley Swan High School Yearbooks. (R 378.781 SEE 1972)
- Short History of Florida Railroads. (R 385.0971 TUR)

Somerset County: Three Centuries of Progress: an Illustrated History. (R 974.944 HAV)
 Southern Railway's Historic Spencer Shops. (R 385.09 NEA)
 Space Rocks and Buffalo Grass. (R 978.1785 PEC)
 St. Francis of Assisi Church Parish Directory [2000]. (R 282.781 SAINT F)
 St. Paul's Lutheran Church, Ellsworth, Kansas: 125 Years, 1878-2003. (R 978.1535 SAINT P)
 Stanton County [Nebraska]. (R 978.2535 MAA)
 Sterling [Colorado]. (R 978.875 HER)
 Sterling College: Co-worker With God: the First 100 Years. (R 378.781 BUC)
 Stolen Charleston: the Spoils of War. (R 975.7915 LON)
 Story of Early Rice County. (R 978.154 JON)
 Story of the Santa Fe Trail. (R 978.158 COF)
 Sullivan County: Borscht Belt. (R 974.735 RIC)
 Sunflower: Shamrock Yearbook. (R 378.781 SUN 1970 & 1981)
 Swiss Mennonite Church: Whitewater, Kansas, 90th Anniversary, 1885-1975. (R 978.188 SWI)
 Tattnall County, Georgia, Loose Papers. (R 975.8775 MUR V.2)
 Tishomingo County, Mississippi Cemeteries. (R 976.2995 TIS V.1)
 Tishomingo County, Mississippi Cemeteries. (R 976.2995 TIS INDEX)
 Tomahawk and Peace Pipe: the 179th Infantry Regiment. (R 355.1 RAB)
 Tomboy Bride: a Woman's Personal Account of Life in Mining Camps of the West. (R 917.8 BAC)
 Upper Yukon Basin [Alaska]. (R 971.9 UPP)
 Ware County, Georgia Marriage Records Index, 1824-1943. (R 975.8794 PAU)
 Wichita High School East, Class of '55 45 Year Reunion, Directory and Program. (R 378.781 WIC 2000)
 Wichita High School East Yearbook. (R 378.781 WIC 1955)
 Wichita High School the Messenger Yearbook. (R 378.781 WIC 1939)
 Wichita Rock & Roll 1950-1980. (R 782.42166 WIC)
 Wicked Fox Cities: the Dark Side of the Valley. (R 977.56 AND)
 Wicked Women of New Mexico. (R 978.9 BIR)
 World War Roll of Honor, 1917-1920: Marion County, Kansas. (R 978.157 ALE)





MARRIAGE RECORDS



Sedgwick County, KS, Book N

<u>Page</u>	<u>Groom/Bride</u>	<u>Residence</u>	<u>Age</u>	<u>Appl. Date</u>	<u>Marriage Date</u>
N301	Benway, Howard E.	Wichita, KS	21		
	Purkey, Augusta	Wichita, KS	22	27 Aug	27 Aug 1910
N301	Cox, Charles K.	Winfield, KS	21		
	Baker, Grace A.	Winfield, KS	18	27 Aug	27 Aug 1910
N302	Emerick, Fred	Burrton, KS	53		
	Reid, Sarah E.	Wichita, KS	48	27 Aug	28 Aug 1910
N302	Elder, Ralph W.	Wichita, KS	21		
	Cutler, Rosie	Wichita, KS	19	29 Aug	29 Aug 1910
N303	Krack, C. L.	Wichita, KS	40		
	Bierer, Mary F.	Wichita, KS	45	29 Aug	01 Sep 1910
N303	Trotter, John W.	Wichita, KS	35		
	Lang, Anna	Wichita, KS	24	29 Aug	29 Aug 1910
N304	Farrell, John J.	Chicago, IL	36		
	Marshall, Pattie W.	Wellington, KS	40	31 Aug	31 Aug 1910
N304	Wise, Arthur E.	Glazer, TX	23		
	Hutson, Ruth	Glazer, TX	18	30 Aug	30 Aug 1910
N305	Cook, Rufus	Winfield, KS	25		
	Baldwin, Lillian	Mt. Hope, KS	21	31 Aug	01 Sep 1910
N305	Baenisch, Harry	Wichita, KS	20		
	Patton, Rhea	Wichita, KS	17	31 Aug	31 Aug 1910
N306	Smoot, Earl C.	Wichita, KS	21		
	Moore, Flossie	Wichita, KS	21	01 Sep	01 Sep 1910
N306	Patterson, Mark	Wichita, KS	40		
	Baker, Emma	Ft. Allegheny, PA	29	01 Sep	01 Sep 1910
N307	Bates, E. D.	Wichita, KS	60		
	Harris, Fannie	Wichita, KS	47	01 Sep	01 Sep 1910
N307	Craig, V. M.	Wichita, KS	24		
	Scott, Blanche	Wichita, KS	22	02 Sep	02 Sep 1910
N308	Hendrickson, C. M.	Goddard, KS	48		
	Bosley, Mrs. Anna	Goddard, KS	47	03 Sep	03 Sep 1910
N308	Redfearn, J. M.	Wichita, KS	21		
	Stewart, Helen	Wichita, KS	17	03 Sep	03 Sep 1910
N309	Fuqua, Charley	Wichita, KS	21		
	Benedict, Francis	Wichita, KS	21	03 Sep	03 Sep 1910
N309	Howard, William	Isabel, KS	22		
	Russ, Minnie Lewellen	Ravenswood, MO	19	03 Sep	04 Sep 1910
N310	Buechel, Paul G.	Wichita, KS	21		
	Blomburg, Lydia	Wichita, KS	23	03 Sep	03 Sep 1910
N310	Carrington, F. C.	Coffeyville, KS	30		
	Litsey, Orpha	Wichita, KS	24	03 Sep	04 Sep 1910
N311	Gallardo, Luis	Wichita, KS	25		
	Wilson, Mary	Wichita, KS	25	03 Sep	
N311	Durham, Guy Roscoe	Ninnekah, OK	28		
	Manley, Clyde	Ninnekah, OK	21	03 Sep	03 Sep 1910
N312	Chapman, I. E.	Wichita, KS	33		
	Buckley, Mabell(le)	Kansas City, KS	23	03 Sep	05 Sep 1910

Marriage Records, continued

<u>Page</u>	<u>Groom/Bride</u>	<u>Residence</u>	<u>Age</u>	<u>Appl. Date</u>	<u>Marriage Date</u>
N312	Whiteley, Clyde Charles	King City, MO	21		
	Goode, Clarice Grace	Wichita, KS	20	03 Sep	04 Sep 1910
N313	Keirm, Dwain	Wichita, KS	21		
	Horstman, Lena	Wichita, KS	17	06 Sep	06 Sep 1910
N313	Voltz, C. J.	Enid, OK	23		
	Barrie, Minnie	Wichita, KS	20	04 Sep	04 Sep 1910
N314	Weeks, Frank	Greenwich, KS	24		
	Bright, Maude	Benton, KS	18	06 Sep	07 Sep 1910
N314	McGoveny, J. F.	Wichita, KS	24		
	Adams, Grace	Sedgwick, KS	23	06 Sep	08 Sep 1910
N315	Hinshaw, Merritt G.	Rose Hill, KS	21		
	Metzger, Effie Isabelle	Augusta, KS	21	06 Sep	07 Sep 1910
N315	Underwood, R. L.	Valley Center, KS	23		
	Chambers, Samantha Marie	Newton, KS	17	07 Sep	07 Sep 1910
N316	Martindale, J. E.	Wichita, KS	42		
	Toms, Mary E.	Burlington, KS	32	07 Sep	07 Sep 1910
N316	Stocker, V. E.	Wichita, KS	27		
	Coffman, Mary Josephine	Wichita, KS	25	07 Sep	07 Sep 1910
N317	Hunt, Emery I.	Winfield, KS	27		
	Woodside, Loue	Winfield, KS	22	07 Sep	07 Sep 1910
N317	Montgomery H.H.	Missoula, MT	29		
	Farmer, P. F.	Wichita, KS	29	07 Sep	08 Sep 1910
N318	Upp, B. E.	Wellington, KS	30		
	Brothers, Mrs. Alta M.	Wellington, KS	23	08 Sep	08 Sep 1910
N318	Brink, Wilbur Lee	Wichita, KS	18		
	Knight, Nancy Ethel	Wichita, KS	17	08 Sep	08 Sep 1910
N319	Thornburg, Charles M.	Wichita, KS	30		
	Winters, Winnie C.	Wichita, KS	23	07 Sep	07 Sep 1910
N319	Battin, J. P.	Joplin, MO	26		
	Hays, Hallie	Wichita, KS	17	08 Sep	08 Sep 1910
N320	Meyer, Henry	Garden Plain, KS	23		
	Pottberg, Emma	Cheney, KS	18	08 Sep	11 Sep 1910
N320	Lauterio, A. F.	Wichita, KS	37		
	Bega, Marie	Wichita, KS	26	08 Sep	16 Sep 1910
N321	St. Clair, Adrian	Eureka, KS	22		
	Sturgeon, Rena	Toronto, KS	20	08 Sep	08 Sep 1910
N321	Anderson, John Victor	Mogollon, NM	29		
	Finn, Adeline Mary	Sedgwick, KS	28	09 Sep	10 Sep 1910
N322	Dinerboiler, Milton	Hutchinson, KS	27		
	Grunder, Jennie	Hutchinson, KS	24	12 Sep	12 Sep 1910
N322	Smith, Charley L.	Wichita, KS	20		
	White, Bessie	Wichita, KS	20	12 Sep	12 Sep 1910
N323	Sander, Will A.	Wichita, KS	20		
	Reser, Nora A.	Renfrow, OK	18	12 Sep	12 Sep 1910
N323	Anthony, Andrew W.	Eddy, OK	23		
	Brown, Cora Bell	Nardin, OK	20	12 Sep	12 Sep 1910
N324	McClain, Thomas	Galesburg, IL	36		
	Borders, Mrs. Idress	Chanute, KS	34	12 Sep	12 Sep 1910
N324	Waples, Fred R.	Augusta, KS	20		
	Mitchell, Bessie M.	Rose Hill, KS	19	12 Sep	13 Sep 1910
N325	Youse, William H.	Wichita, KS	26		
	Corey, Flora D.	Wichita, KS	21	14 Sep	1910

Marriage Records, continued

<u>Page</u>	<u>Groom/Bride</u>	<u>Residence</u>	<u>Age</u>	<u>Appl. Date</u>	<u>Marriage Date</u>
N325	Cohlmia, Frank	Wichita, KS	21		
	Maddy, Almaza	Wichita, KS	18	12 Sep	
N326	Adams, John	Conway Spgs, KS	21		
	Hopper, Fleeta G.	Conway Spgs, KS	18	12 Sep	12 Sep 1910
N326	Carlson, Fred M.	Wichita, KS	23		
	Smith, Emma R.	Valley Center, KS	20	12 Sep	14 Sep 1910
N327	Behrens, Ernest W.	Clearwater, KS	33		
	Deyart, Addie	Greenwich, KS	23	13 Sep	13 Sep 1910
N327	Howell, Ray	Peck, KS	24		
	Miller, Amy	Peck, KS	18	13 Sep	14 Sep 1910
N328	Straus, Isidor	Wichita, KS	27		
	Wurzel, Ethel	New York, NY	26	13 Sep	15 Sep 1910
N328	Langsdale, Clif(ff)	Kansas City, MO	28		
	Smyth, Esther E. (I.)	Wichita, KS	21	13 Sep	14 Sep 1910
N329	Collins, Taylor M.	Wichita, KS	25		
	Hapner, Inez	Caldwell, KS	19	14 Sep	18 Sep 1910
N329	Wilson, Josiah E.	Wichita, KS	22		
	Ervin, Minnie M.	Wichita, KS	22	14 Sep	14 Sep 1910
N330	Davis, Orland G.	Lynnville, IA	31		
	McClung, Gertrude	Wichita, KS	29	14 Sep	14 Sep 1910
N330	Hambric, O. R.	Wichita, KS	24		
	Oliver, G. B.	Wichita, KS	24	14 Sep	14 Sep 1910
N331	Jackson, Cody	Wichita, KS	21		
	Oatman, Lena	Wichita, KS	19	14 Sep	14 Sep 1910
N331	Oatman, Harry	Wichita, KS	22		
	Pitts, Etta	Joplin, MO	23	14 Sep	14 Sep 1910
N332	Mason, William	Greenwich, KS	24		
	McDonald, Edna	Greenwich, KS	18	15 Sep	15 Sep 1910
N332	Cram, Frederick W.	Lamont, OK	23		
	Barfoot, Mary Lynn	Lamont, OK	19	14 Sep	14 Sep 1910
N333	Wagy, C. J.	Wichita, KS	22		
	Handley, Ola	Wichita, KS	18	15 Sep	17 Sep 1910
N333	Anderson, Claude	Wichita, KS	27		
	Miller, Carry	Kansas City, MO	23	15 Sep	15 Sep 1910
N334	Stanley, Alfred P.	Wichita, KS	32		
	Flechsenshar, Frances	Beebe, AR	21	15 Sep	15 Sep 1910
N334	McDowell, L. E.	Jetmore, KS	19		
	Polson, Jewel O.	Jetmore, KS	18	15 Sep	15 Sep 1910
N335	Currie, Earl W.	Wichita, KS	23		
	Plummer, Anna R.	Wichita, KS	19	17 Sep	17 Sep 1910
N335	Shacklett, Elbert	Wichita, KS	33		
	Kern, Rose	Wichita, KS	22	16 Sep	18 Sep 1910
N336	Derrick, Harry	Wichita, KS	21		
	Stroud, Lucinda	Wichita, KS	18	17 Sep	17 Sep 1910
N336	Jones, Shanton	Wichita, KS	29		
	Harper, Rosa	Kingfisher, OK	26	17 Sep	17 Sep 1910
N337	Osborn, William	Wichita, KS	21		
	Wall, Gladys	Wichita, KS	20	17 Sep	17 Sep 1910
N337	Dean, Guy	Oxford, KS	23		
	Clow, Ada May	Oklahoma City, OK	24	17 Sep	17 Sep 1910
N338	Parcher, L. W.	Wichita, KS	33		
	Unangst, Gertrude	Peck, KS	30	17 Sep	17 Sep 1910

Marriage Records, continued

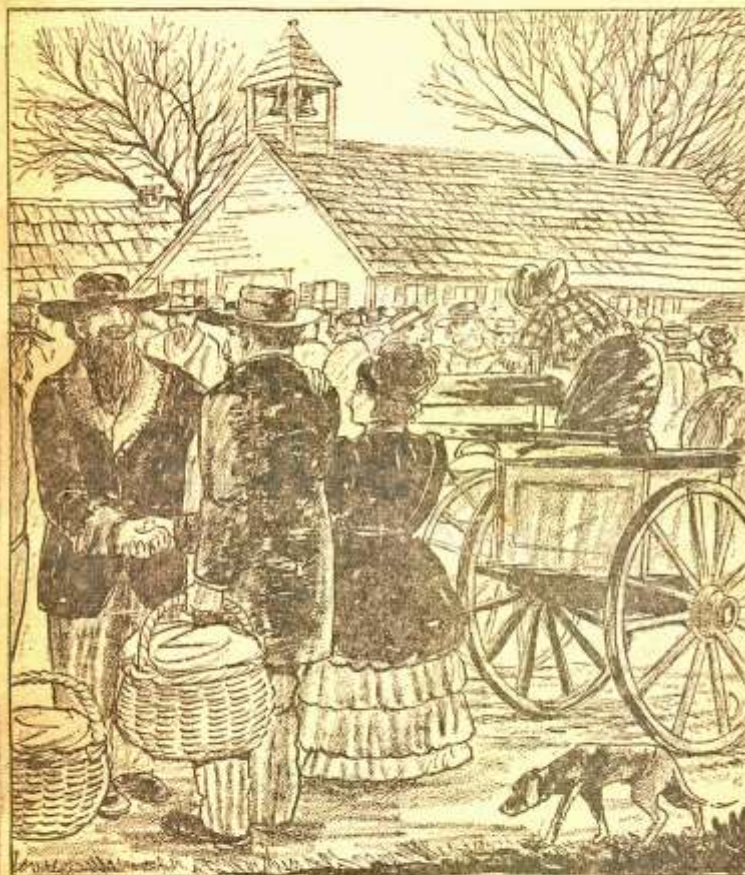
<u>Page</u>	<u>Groom/Bride</u>	<u>Residence</u>	<u>Age</u>	<u>Appl. Date</u>	<u>Marriage Date</u>
N338	Roy, Andrew J.	Wichita, KS	29		
	Healy, Ida A.	Wichita, KS	24	17 Sep	19 Sep 1910
N339	Zink, George W.	La Crosse, KS	34		
	Nelson, Flora L.	Viola, KS	19	19 Sep	19 Sep 1910
N339	Herbert, Le Roy Edwin	Wichita, KS	24		
	Smith, Helena A.	Saulsbury, MO	22	19 Sep	20 Sep 1910
N340	Klausmeyer, Henry	Andale, KS	34		
	Scheve, Frida	Andale, KS	22	19 Sep	04 Oct 1910
N340	Heathman, Clyde	Wichita, KS	27		
	Shockley, Pearl	Wichita, KS	23	19 Sep	19 Sep 1910
N341	Reynolds, C. N.	Wichita, KS	22		
	Noyes, Hattie B.	Wichita, KS	19	19 Sep	19 Sep 1910
N341	Lockwood, Samuel	Buffalo, NY	42		
	Clark, Nina A.	Orleans, NY	28	19 Sep	19 Sep 1910
N342	Reschke, William F.	Wichita, KS	28		
	Johnson, Nannie	Wichita, KS	20	20 Sep	20 Sep 1910
N342	Jones, Thomas R.	Wichita, KS	21		
	Miller, Pearl	Wichita, KS	18	20 Sep	21 Sep 1910
N343	Durkin, J. E.	Wichita, KS	21		
	Potter, Mabel	Wichita, KS	19	20 Sep	20 Sep 1910
N343	Frutiger, Samuel	St. Louis, MO	26		
	Roberts, Glenn	Wichita, KS	20	20 Sep	21 Sep 1910
N344	James, John S.	Herington, KS	23		
	McSwain, Katie	Herington, KS	22	20 Sep	20 Sep 1910
N344	Branson, John J. Jr.	Wichita, KS	24		
	Morrison, Lillian R.	Wichita, KS	21	20 Sep	20 Sep 1910
N345	Siebold, Harry E.	Wichita, KS	19		
	Shirk, Ethel May	Wichita, KS	19	21 Sep	21 Sep 1910
N345	Hanson, C. G.	Wichita, KS	50		
	Gates, Bertha	Wichita, KS	33	21 Sep	21 Sep 1910
N346	Ferguson, Lloyd L.	Garfield, KS	24		
	Collins, Ethel	Wichita, KS	22	21 Sep	21 Sep 1910
N346	Nichols, Charles A.	El Reno, OK	33		
	Hayes, Anna B.	Kansas City, MO	24	21 Sep	21 Sep 1910
N347	Jordan, Lee	Centerville, IA	50		
	Shaffer, Elizabeth	Centerville, IA	33	21 Sep	21 Sep 1910
N347	Wynkoop, H. A.	Hutchinson, KS	30		
	Hoyt, Sadie	Hutchinson, KS	26	21 Sep	21 Sep 1910
N348	VanDeventer, Harry G.	Wichita, KS	27		
	Bloss, Helen Florence	Wichita, KS	27	21 Sep	21 Sep 1910
N348	Marlow, Clarence R.	Wichita, KS	28		
	Taylor, Ethel H.	Wichita, KS	23	21 Sep	21 Sep 1910
N349	Hall, Nelson F.	Newton, KS	26		
	Myers, Effie May	Peabody, KS	25	21 Sep	21 Sep 1910
N349	Hess, Lee C.	Wichita, KS	22		
	Bertholf, Esther	Wichita, KS	20	21 Sep	21 Sep 1910
N350	Stiffler, C. T.	McCracken, KS	40		
	Snodgrass, Lula	Towanda, KS	19	22 Sep	22 Sep 1910
N350	Hartsell, G. W.	Blackburn, OK	60		
	Wallace, Dillie	Blackburn, OK	41	22 Sep	22 Sep 1910



WICHITA HISTORICAL PANEL NO. 118

Thanksgiving in 1872 Was Gala Day in City

Day Was Marked by Community Dinner, Wedding
and Birth of Triplets



(Wichita Historical Panel No. 118)

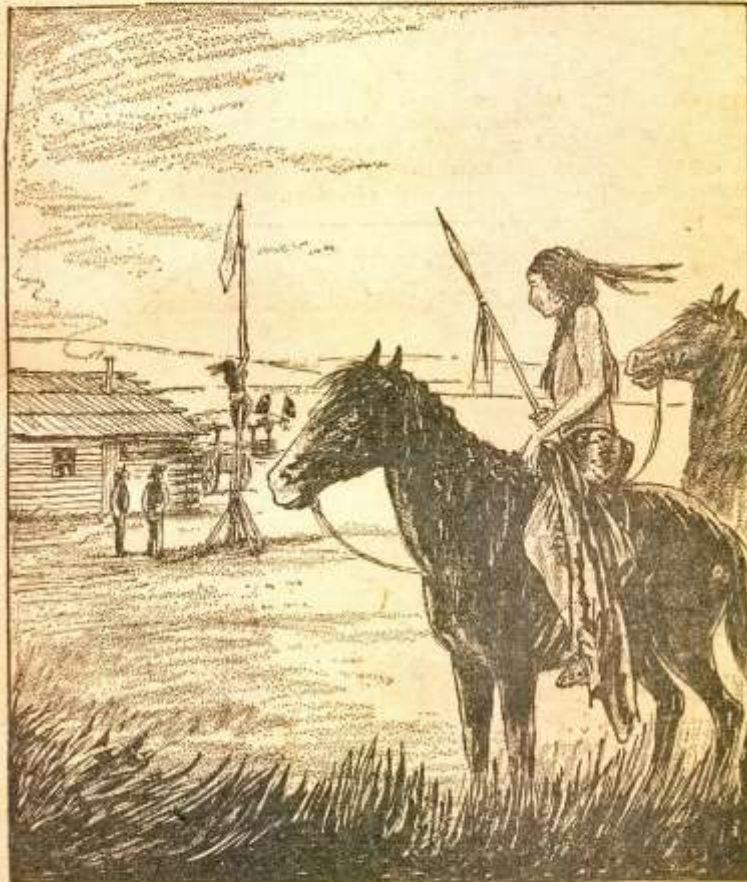
OLD LETTERS OR DIARIES may some day reveal how the pioneer settlers celebrated Thanksgiving and Christmas from 1868. Undoubtedly there was some manner of celebration. For the year 1872 we are indebted to The Eagle files in learning that for the celebration of Thanksgiving, 1872. The community celebrated with "praise services" in the Wichita school house and everyone was invited. Much turkey was consumed, along with buffalo and venison. Wild turkey was a drug on the market but tame turkey sold for a dollar a bird. There was a Thanksgiving eve marriage of Peter Getto and Theresa Zimmermon, while Mrs. Wark gave birth to triplets at Sullivan's "ranche" adjoining the town.

Reprinted by permission of The Wichita Eagle

WICHITA HISTORICAL PANEL NO. 119

First Settlers Used Flag in Order to Get Neighbors

Boys in Freeman Family Gave Tobacco to Indians
Who Would Climb Their Signal Pole



(Wichita Historical Panel No. 119)

WHEN SETTLERS first arrived in the Arkansas valley near Wichita they were anxious to secure neighbors as soon as possible. While the broad prairies were hospitable they were lonely and one family residing in the valley south of Wichita made use of an unusual beacon to attract visitors and possible settlers. This was the Freeman family which in 1870 located in the Eushnell school section south of Wichita. They rigged up a pole and from it unfurled a canvas flag. Among the visitors it attracted were small bands of Indians and the Freeman boys would cut a plug of tobacco in small bits and offer a piece to the Indian who would climb the pole and bring the flag down.

Reprinted by permission of The Wichita Eagle

INDEX OF DIVORCES

Sedgwick County, Kansas

	Docket	Plaintiff	Defendant	Date of Filing	Pages	Comments	Reel
13212	X439	Davis, Ella	Davis, Enoch	29 May 1890	16		7
13267	X510	Capps, Frankie	Capps, Bennett	09 Jun 1890	13		7
13282	X536	Martin, Clarinda	Martin, William	14 Jun 1890	18		7
13413	Y051	Pehl, Lenna	Pehl, Gustav	02 Jul 1890	13		7
13434	Y079	Baker, Anna	Baker, Charles M.	08 Jul 1890	22		7
13451	Y102	Banks, Hester	Banks, William	14 Jul 1890	13		7
13455	Y106	Moore, Flora I.	Moore, John R.	14 Jul 1890	16		7
13468	Y124	Hutton, Phoebe L.	Hutton, Samuel F.	18 Jul 1890	13		7
13487	Y148	Gains, May	Gains, Charles	25 Jul 1890	11		7
13489	Y150	Bonney, A. C.	Bonney, F. M.	25 Jul 1890	13		7
13504	Y168	Pasters, Della	Pasters, William	30 Jul 1890	11		7
13523	Y191	Smith, Belvia M.	Smith, Charles	07 Aug 1890	23		7
13525	Y193	Miller, Charles	Miller, Adrian	08 Aug 1890	18		7
13527	Y200	Edwards, William H.	Edwards, Sarah C.	08 Aug 1890	22		7
13535	Y208	Baker, Annie	Baker, Charles M.	11 Aug 1890	19		7
13606	Y299	Hayward, Elizabeth	Hayward, J. B.	28 Aug 1890	13		7
13632	Y335	Gibbs, Sarah E.	Gibbs, John W.	06 Sep 1890	17		7
13636	Y340	Saunders, Isabell	Saunders, Orvel Smith	09 Sep 1890	18		7
13646	Y353	Thompson, Mary J.	Thompson, William	11 Sep 1890	45		7
13663	Y376	Martin, William	Martin, Maggie	18 Sep 1890	17		8
13675	Y395	Arnold, J. J.	Arnold, Lucie	20 Sep 1890	14		8
13676	Y396	Westfall, John	Powell, E. R.	22 Sep 1890	29	Not A Di- vorce	8
13700	Y431	Rhodes, Elva	Rhodes, John	30 Sep 1890	9		8
13785	Y533	Draves, Gertrude	Draves, Julius	26 Oct 1890	19		8
13802	Y554	Stover, Edward C.	Stover, Hattie M.	06 Nov 1890	13		8
13813	Y567	Slattery, Louisa C.	Slattery, James H.	10 Nov 1890	18		8
13817	Y573	Pore, Flora A.	Pore, James N.	12 Nov 1890	23		8
13887	Z038	Hill, Violet A.	Hill, William H.	29 Nov 1890	14		8
13888	Z039	Stewart, P. L.	Stewart, G. J.	29 Nov 1890	14		8
13891	Z043	Pastures, William	Pastures, Della	01 Dec 1890	16		8
13912	Z064	Farmer, A. J.	Farmer, Addie	02 Dec 1890	42		8
13949	Z119	House, Nora A.	House, Jackson	12 Dec 1890	13		8
13986	Z165	Champion, Mary E.	Champion, Charles T.	21 Nov 1896	10	Not A Di- vorce	8
14029	Z209	Maddux, Simon A.	Maddux, Lida M.	31 Dec 1890	24		8
14047	Z260	McFadden, Clara	McFadden, Mathias	02 Jan 1891	13		8

	Docket	Plaintiff	Defendant	Date of Filing	Pages	Comments	Reel
14194	Z548	Gasaway, Nettie	Gasaway, Frank	30 Jan 1891	11		8
14202	Z569	Moss, Lorana C.	Moss, A. T.	05 Feb 1891	13		8
14219	Z590	Buch, Aron	Buch, Sarah	07 Feb 1891	23		8
14233	Z611	Binckley, Mary E.	Binckley, John H.	11 Feb 1891	18		8
14259	AA002	Gray, Thurse	Gray, Lewis	16 Feb 1891	19		8
14307	AA063	Skillman, Amelia	Skillman, William R.	26 Feb 1891	15		8
14325	AA083	Larrimer, J. C.	Larrimer, Susanna C.	27 Feb 1891	24		8
14338	AA099	Hoover, Clara M.	Hoover, James A.	02 Mar 1891	13		8
14398	AA302	Yeager, Lavinia A.	Yeager, A. J.	20 Mar 1891	15		8
14404	AA310	Hill, Marion A.	Hill, William H.	20 Mar 1891	11		8
14440	AA369	Garner, Alice	Garner, James H.	01 Apr 1891	16		8
14457	AA398	Buetzer, Louise	Buetzer, Friedrich	09 Apr 1891	16		8
14504	28-046	Chambers, Maggie A.	Chambers, Charles M.	23 Apr 1891	22		8
14505	28-047	Jilts, Susan	Jilts, William	30 Mar 1897	2		8
14506	28-048	Preston, Frank T.	Preston, Lizzie	22 Apr 1891	8		8
14512	28-053	Miller, Elizabeth A.	Miller, William M.	24 Apr 1891	11		8
14517	28-059	Friend, Jehu	Friend, Catharine M.	25 Apr 1891	16		8
14534	28-076	Bates, C. C.	Bates, Mary Jane	29 Apr 1891	16		8
14557	28-099	Mills, Addie	Mills, Lincoln R.	05 May 1891	22		8
14559	28-101	Busby, Katie	Busby, Harry	06 May 1891	12		8
14592	28-134	Miller, Lucy Olive	Miller, Joseph Emanuel	14 May 1891	17		8
14618	28-160	Waring, Dana	Waring, James R.	22 May 1891	14		8
14625	28-167	Hackett, Sarah	Hackett, Merritt	26 May 1891	25		8
14630	28-172	Nau, Caroline	Nau, John	26 May 1891	35		8
14636	28-178	Richmond, Sarah E.	Richmond, Frank	28 May 1891	23		8
14638	28-180	Cornwell, Allie	Cornwell, C. P.	28 May 1891	13		8
14642	28-184	Smith, Eugene	Smith, Laura	01 Jun 1891	13		8
14649	28-191	Priest, Hannah	Priest, James L.	04 Jun 1891	13		8
14677	28-219	Diehl, Lilla	Diehl, M. E.	13 Jun 1891	22		8
14678	28-220	Harrison, J.	Harrison, Martha E.	13 Jun 1891	20		8
14698	28-240	Moore, Ella M.	Moore, Harry	20 Jun 1891	25		8
14702	28-244	Malone, Zelma A.	Malone, Thomas H.	20 Jun 1891	12		8
14711	28-253	Williams, J. B.	Williams, Miranda A.	23 Jun 1891	20		8
14718	28-260	Perkins, Anna W.	Perkins, Joseph	25 Jun 1891	11		8
14723	28-265	Salmon, Loura	Salmon, Elmer	26 Jun 1891	12		8
14732	28-274	Partner, Levi H.	Partner, Nettie	29 Jun 1891	16		8
14772	28-314	Shaffer, Alda I.	Shaffer, Howard W.	08 Jul 1891	11		8
14773	28-315	Nelson, Lydia J.	Nelson, Albert F.	08 Jul 1891	18		8
14774	28-316	Long, Clara V.	Long, William H.	09 Jul 1891	16		8
14788	28-330	Hoff, Ida E.	Hoff, Charles	13 Jul 1891	20		8

Divorce Index, continued

	Docket	Plaintiff	Defendant	Date of Filing	Pages	Comments	Reel
14797	28-339	Lingo, Mary H.	Lingo, William B.	15 Jul 1891	13		8
14809	28-351	Hardesty, Elizabeth N.	Hardesty, John W.	21 Jul 1891	14		8
14811	28-353	Patek, Sarah	Patek, G. J.	22 Jul 1891	20		8
14831	28-373	Woods, Sarah M.	Woods, Benjamin F.	29 Jul 1891	13		8
14833	28-375	Dean, Ida F.	Dean, Ralph	10 Sep 1891	4		8
14835	28-377	Parker, Hester	Parker, C. F.	28 Jul 1891	13		8
14858	28-400	Truesdell, Helen S.	Truesdell, Walter K.	01 Aug 1891	12		8
14870	28-412	Kay, Allen	Kay, Fannie	06 Aug 1891	13		8
14895	28-437	Coats, Emma	Coats, Ulysses	17 Aug 1891	12		8
14903	28-445	Dickson, Susanna	Dickson, Albert	21 Aug 1891	20		8
14912	28-454	Davis, Nancy J.	Davis, John D.	25 Aug 1891	27		8
14940	28-482	Forry, John N.	Forry, Mollie	11 Sep 1891	28		8
14952	28-494	Stephan, Mary	Stephan, Louis	12 Sep 1891	9		8
14954	28-496	Ford, M. C.	Ford, S. W.	12 Sep 1891	9		8
14958	28-500	Richmond, Belle	Richmond, Hiram	14 Sep 1891	10		8
14974	28-516	Schulte, Rosalia	Schulte, Severin	21 Sep 1891	36		8
14994	28-537	Fletcher, Glenn D.	Fletcher, Fannie W.	25 Sep 1891	23		8
May Be Case 14505							
15005	28-047	Jilts, Susan	Jilts, William	23 Sep 1891	4		8
15012	28-555	Bartholomew, Lizzie A.	Bartholomew, George W.	30 Sep 1891	32		8
15013	28-556	Fummerton, Elizabeth P.	Fummerton, William J.	30 Sep 1891	14		8
15014	28-557	Whitfield, Shade	Whitfield, Mary	29 Sep 1891	9		8
15062	28-605	Pratt, Ada F.	Pratt, Frank G.	12 Oct 1891	21		8
15066	28-609	Gregg, Anna L.	Gregg, William C.	15 Oct 1891	16		8
15075	28-618	Fisher, Mary M.	Fisher, James W.	20 Oct 1891	12		8
15085	28-628	Eaton, H. H.	Eaton, Fannie	24 Oct 1891	12		8
15115	30-018	Kelley, Millie	Kelley, William	06 Nov 1891	25		8
15150	30-053	Sargent, Lulu M.	Sargent, Martin L.	20 Nov 1891	15		8
15158	30-061	Moon, George	Moon, Emma J.	23 Nov 1891	14		8
15266	30-169	Rew, Mary A.	Rew, J. A.	21 Dec 1891	16		8
15283	30-186	Caldwell, Mattie E.	Caldwell, J. A.	23 Dec 1891	10		8
15421	30-324	Bradshaw, Rose	Bradshaw, William E.	05 Jan 1892	72		8
15428	30-331	Barker, Lizzie A.	Barker, John A.	07 Jan 1892	19		8

**Copies of divorce files may be purchased from MHGS by regular mail
(MHGS, Attention: Divorce File Assistant, PO Box 1121, Wichita, KS, 67201-1121
using the form found here:**

<http://mhgswichita.org/wp/wp-content/uploads/2015/03/MHGS-Copies-Order-Form5.pdf>

**Pedigree Chart for
Jill Alane Owens**

Permission to Hunt

Jan

James Williamson Owens

b: 12 Jun 1924 in Miles City, Custer County, Montana
m: 20 Apr 1947 in Wichita, Sedgwick County, Kansas
d: 21 Mar 1978 in Wichita, Sedgwick County, Kansas

Jill Alane Owens

Herbert Hosea Owen

b: 20 Feb 1881 in Louisburg, Miami County, Kansas
m: 28 Oct 1905 in Erie, Neosho County, Kansas
d: 11 Mar 1956 in Wichita, Sedgwick County, Kansas

Gwendolen Viola Williamson

b: 20 Jan 1888 in Independence, Montgomery County, Kansas
d: 01 Sep 1969 in Wichita, Sedgwick County, Kansas

John Wesley Owens

b: 22 Feb 1835 in Perry County, Illinois
m: 13 Sep 1861 in Adair County, Missouri, USA
d: 14 Apr 1899 in McDonald Co Mo ?

Rebecca Lucinda Myers

b: 25 Mar 1843 in Farmington, Graves County, Kentucky
d: 27 Feb 1932 in Wichita, Sedgwick Co., Kansas

Alvanis Cincinnatus Williamson

b: 17 Jan 1853 in Agency...
m: 23 Aug 1879 in Indepe...
d: 19 Oct 1936 in Chanute...

Deborah Crapson

b: 16 May 1864 in Kirksville, Schyler County, Missouri
d: 22 Mar 1963 in Chanute, Neosho County, Kansas

Wilson Wesley Owen

b: 07 Dec 1794 in North...

Isabella Winchester Gray

b: 04 Feb 1796 in North...

Christian Myers

b: 12 Feb 1809 in Wilkes...

Lucinda Mikel

b: 12 Feb 1809 in Wilkes...

Jacob Lewis Downey Williamson

b: 15 Oct 1823 in Kentucky

Sarah Louisa Temple

b: 18 Jul 1837 in Wapello...

Lorenzo Dow Crapson

b: 18 Feb 1833 in Green...

Martha Elizabeth Minton

b: 26 Dec 1837 in Weakle...

John Henry Cocking

b: 13 May 1884 in Calume...
m: 27 Sep 1902 in Hought...
d: 21 Jan 1957 in Winfield...

Mary Louise Jory

b: 04 Jul 1881 in Red Ruth, Cornwall, England
d: 21 Sep 1986 in Wichita, Sedgwick County, Kansas

Henry Cocking

b: 28 Aug 1860 in Coppe...

Susan Ann Gilbert

b: Jul 1859 in Copper F...
d:

Richard Moyle

b:
m:

Ellen Jory

b: Kea, Cornwall, England

George Henry Cocking

b: 16 Oct 1906 in Calumet Township, Houghton County, Michigan
m: 26 Feb 1927 in Wichita, Sedgwick Co., Kansas
d: 22 Jul 1991 in Wichita, Sedgwick County, Kansas

Flora Belle Haney

b: 04 Dec 1906 in San Saba County, Texas
d: 13 Jan 1977 in Wichita, Sedgwick County, Kansas

James Earnest Haney

b: 03 Mar 1881 in Danvill...
m: 06 Sep 1903 in Yell Co...
d: 09 Jan 1927 in Wichita,...

Lillie Gertrude Head

b: 04 Feb 1886 in Yell County, Arkansas
d: 19 May 1965 in Wichita, Sedgwick County, Kansas

Thomas Jefferson Haney Jr

b: 15 Aug 1854 in Danvill...

Edorah A Rounsaville

b: Abt. 07 Aug 1858 in Ar...

George Monroe Head

b: 08 Jan 1856 in Obion,...

Mary Lawrence

b: 24 Dec 1852 in Missou...

Georgia Belle Cocking

b: 24 Sep 1928 in Wichita, Sedgwick Co., Kansas
d: 23 Jul 1999 in Wichita, Sedgwick County, Kansas

The Wichita Weekly Eagle

Thursday, May 8, 1873, page 3

Column 1

CITY AND COUNTY NEWS.

The city was alive with farmers Saturday.

The express train comes in well filled daily.

The city assessor, Mr. Day, is interviewing the citizens.

The walls of Greiffenstein's new building are completed.

The delinquent lots and lands have been on sale this week.

Our country is being blessed by a series of spring showers.

Those of a piscatorial turn of mind are having abundant harvest.

Todd & Royal have a few more bushels of cotton seed to dispose of.

Geo. Shlichter has gone to St. Louis to replenish his stock of hardware.

Cedar trees from Barbour county have been selling on our streets this week.

See interesting communications on "castor beans," "taxes," etc., on second page.

J. Wollman, of Leavenworth, brother-in-law of Kohn Bros., was in the city this week.

The big Arkansas river has risen a little in the last few days, caused by the recent rains.

A postoffice [sic] has been established at Nenescah [sic], Sedgwick county; J. A. Churchill, postmaster.

Mr. W. E. Eldridge, of New York, is in our city taking observations with a view to locating.

Doc. Holmes, at the postoffice book store, has just received a large assortment of wall paper.

Messrs. Cox & Daly have a large lot of sweet potato plants for sale at their garden, southeast of town.

Two droves of cattle have arrived in our state and are now on the Wichita grazing grounds.

Mr. Phillips is burning his first kiln of brick, which contains about one hundred and ten thousand.

The wheat prospects in this county look very promising. The farmers are greatly encouraged thereby.

J. Karatofsky, knowing the value of advertising, has got out an illustrated paper for gratuitous circulation.

One hundred and eighty-nine men, women and children attended the M. E. Sabbath school on last Sabbath.

G. H. Smith is erecting a building near the corner of First and Main streets, which he intends to use for a land office.

The Presbyterians have received a large lot of hymn and tune books, composed of choice collections, for public worship.

Owing to the coming county Sunday school convention, the regular monthly Sunday school concert is indefinitely postponed.

Several parties – cattle owners – have arrived in our city, some of them bringing their families, to remain during the summer.

The friends of the Baptist mite society will meet at the residence of Mr. Hills, on Topeka avenue, to-night [sic]. All are cordially invited to attend.

A gentleman arrived in our city this week from Illinois with thirty-five stands of Italian bees, all in good condition. He is a successful apiarist.

The ladies' social of the M. E. Church will meet at the Douglas Avenue House, Tuesday evening, May 14th. A general attendance is solicited.

Beard & Vance, government freighters, loaded one of their ox trains at this place, this week, with government supplies for posts in the Indian territory.

J. R. Downer, Baptist state Sunday school agent, passed through our city on Saturday last en route to Winfield to attend the county Sunday school convention.

Charley Hill has received notice of shipment of his soda fountain. When it arrives Wichita can boast of having one of the finest soda fountains in the state.

The firm of Hess & Getto, being determined not to be outdone by any other grocery firm, have procured and are now using a delivery wagon for the accommodation of their customers.

The last club dance of the season, under the auspices of the Young Men's Social Club, will be

held next Wednesday night. Owing to a misunderstanding in regard to the hall it was postponed.

We noticed a wagon load of sun bonnets, broad-brim hats, fishing rods, and shot guns passing along the street Tuesday evening, which looked as if somebody had been having a May party.

Mr. Carpenter, one of our worthy county commissioners, informs us that a farmer living about three miles east of Valley Center, in digging a well struck a vein of coal at the depth of twenty-five feet, about eight inches thick.

W. A. Thomas & Co., at the famous green front store, made the largest sale this week that has been made in the city in one day, viz: 144,000 pounds of flour, or 1,400 sacks, a part of which was loaded on wagons and sent south.

Mr. Cline has returned from down the trail and informs us that four herds of cattle are now in the state, which belong to the following gentlemen: Houston Bros., 1,000; Mr. Hilderbrand, 1,000; Mr. Cassidy and Dr. Burnett, 1,000 each.

If our people desire to observe decoration day, which occurs on the 30th of this month, it is time that the subject should be agitated and committees appointed, and the work of securing floral offerings to the dead heroes of our country be commenced.

Quite a lot of seed sent from the agricultural bureau at Washington are now in possession of Mr. West, the secretary of the county agricultural society, and parties so desiring can obtain some of them by calling on that gentleman. They are for free distribution.

Mr. Harris, one of the largest ranchmen and cattle owners in Texas, is in the city. Also Mr. Pierce, who has been engaged for several years past in driving, has organized a company representing about one million of money, and will turn his attention exclusively to buying and shipping this season from this point.

The directors of the Sedgwick County Agricultural society met at this office last Saturday. After examining bids which were presented for the location of the grounds they accepted Mr. R. A. Neely's proposition, which consists of forty acres lying just east of Chisholm creek, opposite the stock yards. They then proceeded to elect a president, which resulted in an unanimous vote for N. A. English. The next meeting will be held at Eagle hall on Saturday.

Quite a number of the good citizens of New York are in our city prospecting. We have had the pleasure of meeting Mr. John Huff, his wife is with him; also W. W. Burr and J. W. Eldridge. They express themselves as being well pleased with our country. They are old acquaintances and friends of our fellow townsmen, Caldwell and Tittsworth, and L. S. Davidson. Our citizens are glad to meet with such men, and hope they will conclude to settle with us.

The district court will begin its session on Monday, the 12th inst. There is a full docket, and among them many very interesting cases. We learn there will be a large attendance of distinguished legal gentlemen from other parts of the state. We anticipate the most interesting session of the court ever held in this county. Among other notable features of interest will be a grand social hop, to be given at Eagle hall, on Friday evening, the 16th inst., under the auspices of the legal fraternity of Wichita. Invitations will be sent out in due time. The arrangements being made will insure this to be the most agreeable event of the season.

Column 2

At a meeting, consisting of five members from each Sabbath school in the city, which was held at the residence of Mr. F. C. Martsolf, to take into consideration the expediency of holding a county Sunday school convention, Mr. Stanley was called to the chair, and Mr. Hyde was elected secretary. After prayer, Rev. Harsen offered the following resolution, which was passed:

Resolved. That we invite the friends of the Sabbath schools throughout the county to join with us in organizing a Sabbath school county convention, and that each school be requested to send its superintendent and two delegates to meet on the last Thursday of this month at the Methodist church, in this city, for that purpose.

A committee of three, consisting of Messrs. Mitchell, Holmes, and Murdock, was appointed to draft by-laws and constitution for the consideration of the convention. J. E. Caldwell was appointed choirster [sic]. Rev. Harsen was appointed corresponding secretary and requested to notify each school in the county by letter of the county convention, and request them to send delegates. A committee on programme, consisting of the pastors of

the churches, was appointed, also an executive committee, consisting of the three superintendents. The different superintendents are respectfully requested to send the name of each delegate who will be in attendance to F. C. Martsolf, of this city, at their earliest convenience, in order that ample means can be made for their entertainment while in attendance. The following ladies were appointed as a committee on hospitalities, whose business will be to visit the different families through the city and secure accommodations for the delegates, and report the names and residence of such parties to Mr. Martsolf: Mrs. Kellogg and Mrs. Millison, of the Presbyterian church; Miss Emma Smith and Miss Lizzie Foote, of the Methodist church; Miss Hills and Mrs. G. W. Lampher, of the Baptist church. It was also decided that a prayer and conference meeting be held on Wednesday evening preceding the day of the convention, at the Methodist church, dedicated especially to the Sabbath school work, to which meeting a cordial invitation is extended to all. It is desired by the Sabbath school workers of our city that the convention be made a success in every particular, and that each school throughout the county will take it under earnest and prayerful consideration – elect delegates, and see that not one delegate fail to put in an appearance, as great good must necessarily arise from a hearty co-operation of different schools and different denominations in one grand cause. We shall endeavor to publish the programme in our next issue.

An application was made, on Monday last, before Hon. W. C. Little, probate judge, by N. A. English, for a temporary order of injunction to restrain the sale of certain lots on Douglas avenue for the payment of sidewalk taxes assessed against said lots by the corporate authorities of the city of Wichita, on the ground or the invalidity of the assessment. The judge decided that Mr. English, having petitioned the city council to construct the walks, and having witnessed their construction without objection, and there being no fraud or injustice in the assessment alleged or shown, he was estopped from maintaining an injunction to restrain the collection of the tax, and the application was therefore denied. This, however, developed a striking instance of neglect of duty on the part or a former city official which, in justice to the public interests, our city authorities should see does not occur hereafter.

As was previously announced, the Presbyterian society held their festival on Tuesday night of last week. Quite a large number of persons were present, but the night being very unfavorable they concluded to hold over and give a second entertainment on the following evening, at which time the attendance was much larger, making it more of a success financially. They realized, clear of all expenses, \$115.00.

The laying of brick has been commenced on the new hotel building. Ed. Longbottom has the contract for the brick work. Judging from the length of time he was engaged in putting up Mr. Greiffenstein's building, we opine that it will go up with a rush.

Wichita Public Schools.

Report and roll of honor for the week ending Friday, May 24. Conditions – unexceptional in conduct; good in lessons; always present; never tardy.

HIGH SCHOOL.

Francis Magee,	Kittie Laughton,
Walter McClees,	Emma Scott,
Allie Mead,	Effie Watrous,
James L. Mead,	Nina Hilton,
Ida Watrous,	May Hilton,
Charley Bates,	Lillie Cox,
Alonzo Devashier,	Flora Redfield,
Julia Clark,	M. Throckmorton,
Ella Fuller,	Wm. Throckmorton.

H. L. FEES, Teacher.

INTERMEDIATE.

Myrtle Eagan,	Robert Steirs,
Mary Moore,	Rosa Cook,
Hattie Millis,	Alice Hilton,
Sarah Wallace,	Ella Weston,
Medford Devashier,	Ida Westlake,
Eugene Drew,	Elasa Willon,
Edgar Mead.	

LISSA W. TUCKER, Teacher.

PRIMARY.

Willie Martin,	Minnie Brown,
Willie Long,	Charles Brown,
Conn Fox,	Canary Beckwith,
Anna Fox,	Clyde Rhodes,

MHGS Register, Vol. 53, No. 3

Armeda Hiffner,	Eddie White,
Jennie Moyer,	Elvin Herring,
Addie Rhodes,	Lincoln Magee,
Eva Millis,	Mirian White,
Emma Wallace,	Ralph Millison,
Ella Wallace,	Richard Frank,
Martha Stout,	Oscar Couch,
Minnie Millis,	Wm. Brown.

LIZZE HIGDAY, TEACHER.

Enrollment for year132

JNO. TUCKER, Sup't.

WICHITA, Friday, May 2d, 1873.

Regular meeting of the Frontier Hook and Ladder Co., No. 1.

Meeting called to order – Foreman Matthews in the chair.

Roll call: quorum present.

Minutes of previous meeting read and approved.

On motion, the treasurer was excused from making report.

On motion, all fines and dues of active members were cancelled.

The following officers for duly elected for the ensuing year: Geo. W. Matthews, foreman; C. A. Philip, 1st assistant; W. D. Russell, 2d assistant; R. Cogdell, secretary; Chas. Hunter, treasurer.

On motion, the committee on uniform were instructed to select a style of cap and send for one for each active member. Moved and carried that the proceedings of the meeting be published.

The following resolution was adopted:

Resolved, That any active member absenting himself from a regular or special meeting, shall be subject to a fine of twenty-five cents for each absence.

On motion, the meeting adjourned.

C. A. PHILLIP,

Secretary *pro tem*.

MARRIED.

On the 23d ult., at the bride's home, by Rev. Mr. Pratt, Mr. James H. Black, of Wichita, Kas., to Miss Jessie Hunter, of Philadelphia, Penn.

The many friends of Mr. Black in this city will peruse the above with more than ordinary pleasure. J. H. is an old resident of this place, and since his residence here he has by his uniform courtesy endeared himself to all who know him, who will rejoice to learn that he has secured a lady as a partner of life's joys and sorrows who is in every way worthy of him. Mr. and Mrs. Black will return to our city in a few days, when they will receive the congratulations of friends. They have a nice new residence, situated on Lawrence avenue, south of Douglas, already completed, to commence life's journey in. We wish them much joy.

DIED.

At the residence of his father, C. F. Weidner, near this city, on Saturday, May 3d, of brain fever, S. B. Weidner, aged 22 years.

57 1896

Chicago Lumber Co

BOUGHT OF

DAVIDSON & CASE

Wholesale and Retail

General Office
151 N. MOSLEY AVE
WICHITA

LUMBER DEALERS.

SEND ALL INVOICES TO WICHITA

TERMS

YARDS AT
WICHITA,
EL RENO,
OKLAHOMA,
MINCO,
CHICKASHA,
POND CREEK,
AND ENID.
CHOCTAW CITY
AND DALE.

UPCOMING MHGS EVENTS

All events and programs will take place at the MHGS Library, 1203 N Main, unless otherwise noted.
All events and programs are free and open to the public.

Genealogy Power Up! SIG - Second Tuesday, 1:30 PM to 3 PM -Julia Langel

Sessions held February 11, March 10, April 14 from 1:30 PM to 3 PM

Let's power up our research techniques! This is a casual discussion group on genealogy topics. Please bring a question, suggestion, story, website or book to share.

Writing the History of a House, Farm or Business SIG - Third Saturday at 1:30 PM - Julia Langel

Sessions held March 21, April 18 from 1:30 PM to 3 PM

Researching and Writing about the History of Your House, Farm or Business will be a series of 9 monthly meetings during which we will each create a profile of a property of interest. Topics discussed will include courthouse records, maps, city directories, newspaper articles, architectural styles, historic preservation and historic registries.

Photo Mysteries Special Interest Group - Third Tuesday 1:30 PM to 3 PM - Rex Riley

Sessions held February 18, March 17, April 21 from 1:30 PM to 3 PM

Bring in your mystery photos (or scans) and the group will work together to help figure out the clues that may let you date the photo and identify the subject.



From the 1887 Wichita City Directory

INDEX

Abbott	66	Capps.....	84	Eagan.....	90
Adams	66, 79, 80	Carlson	80	Eaton	86
Alexander.....	69	Carpenter.....	69, 89	Edwards.....	84
Anderson	79, 80	Carrington	78	Egan	69
Anthony.....	79	Cassidy.....	89	Elder.....	78
Arnold	84	Chambers	79, 85	Eldridge.....	88, 89
Baenisch.....	78	Champion.....	84	Emerick.....	78
Baker	78, 84	Chapman	78	English	89, 90
Baldwin	78	Churchill	88	Ervin.....	80
Banks.....	84	Clark.....	69, 81, 90	Farmer	79, 84
Barfoot	80	Cline.....	66, 89	Farrell	78
Barker.....	86	Clow	80	Fees	69, 90
Barrie.....	79	Coats	86	Ferguson.....	81
Bartholomew	86	Cocking	87	Finn	79
Bates.....	69, 78, 85, 90	Coffman	79	Fisher.....	86
Battin.....	79	Cogdell.....	91	Flechsengar	80
Beard	88	Cohlmia.....	80	Fletcher	86
Beckwith	90	Collins	80, 81	Folks.....	66
Bega	79	Cook.....	78, 90	Foote	90
Behrens	80	Corey.....	79	Ford	86
Benedict	78	Cornwell.....	85	Forry.....	86
Benway	78	Couch	69, 91	Fox	69, 90
Bertholf	81	Cox.....	69, 78, 88, 90	Frank	91
Bierer.....	78	Craig.....	78	Freeman.....	83
Binckley	85	Cram.....	80	Friend	85
Black	91	Cramer.....	68	Frutiger.....	81
Blomburg	78	Crapson	87	Fuller	66, 90
Bloss.....	81	Crawford	68	Fummerton.....	86
Bonney	84	Currie	80	Fuqua.....	78
Borders.....	79	Cutler.....	78	Gains	84
Bosley	78	Daly.....	88	Gallardo.....	78
Bradshaw.....	86	Darling	66	Garner	85
Branson	81	Davidson	89	Gasaway.....	85
Bright	79	Davis	66, 80, 84, 86	Gates	81
Brink	79	Day	69	George.....	67
Brothers.....	79	Dean	80, 86	Getto.....	82, 88
Brown.....	69, 79, 90	Derrick	80	Gibbs	84
Buch	85	Devashier	69, 90	Gilbert	87
Buckley	78	Deyart.....	80	Goode.....	79
Buechel	78	Dickson	86	Gossard	66
Buetzer	85	Diehl.....	85	Gould.....	68
Burnett.....	89	Dinerboiler	79	Gray.....	85, 87
Burr	89	Downer.....	88	Gregg.....	86
Bury.....	69	Draves	84	Greiffenstein	66, 67, 88, 90
Busby	85	Drew.....	69, 90	Grunder	79
Caldwell	86, 89	Durham	78	Hackett	85
Camp.....	68	Durkin	81	Hall.....	66, 81

Index, continued

Hambric.....	80	Jackson.....	80	McCulloch.....	67
Handley.....	80	James.....	81	McDonald.....	80
Haney.....	87	Jenkins.....	69	McDowell.....	80
Hanson.....	81	Jilts.....	85, 86	McFadden.....	84
Hapner.....	80	Johnson.....	81	McGoveny.....	79
Hardesty.....	86	Jones.....	80, 81	McQuiston.....	69
Harper.....	80	Jordan.....	81	McSwain.....	81
Harris.....	78, 89	Jory.....	87	Mead.....	66, 90
Harrison.....	85	Karatofsky.....	88	Metzger.....	79
Harsen.....	67, 89	Kay.....	86	Meyer.....	79
Hartsell.....	81	Keirm.....	79	Mikel.....	87
Hayes.....	81	Kelley.....	86	Millard.....	68
Hays.....	79	Kellogg.....	90	Miller.....	69, 80, 81, 84, 85
Hayward.....	84	Kern.....	80	Millis.....	69, 90, 91
Head.....	87	Klausmeyer.....	81	Millison.....	69, 90, 91
Healy.....	81	Knight.....	79	Mills.....	85
Heathman.....	81	Kohn.....	88	Minton.....	87
Hendrickson.....	78	Krack.....	78	Mitchell.....	79, 89
Herbert.....	81	Kramer.....	66	Montgomery.....	79
Herring.....	69, 91	Lampher.....	90	Moon.....	86
Hess.....	81, 88	Lang.....	78	Moore.....	78, 84, 85, 90
Hiffner.....	91	Langsdale.....	80	Morris.....	73
Higday.....	69, 91	Larrimer.....	85	Morrison.....	81
Hilderbrand.....	89	Laughton.....	90	Moss.....	85
Hill.....	84, 85, 88	Lauterio.....	79	Moyer.....	69, 91
Hilliard.....	69	Lawrence.....	87	Moyle.....	87
Hills.....	66, 88, 90	Levy.....	67	Munger.....	66
Hilton.....	90	Lingo.....	86	Murdock.....	89
Hinshaw.....	79	Litsey.....	78	Myers.....	81, 87
Hobbs.....	69	Little.....	90	Nau.....	85
Hoff.....	85	Lockwood.....	81	Neely.....	89
Hoffman.....	66	Long.....	69, 85, 90	Nelson.....	81, 85
Holmes.....	88, 89	Longbottom.....	90	Nessly.....	66
Hoover.....	85	Maddux.....	84	Nichols.....	81
Hope.....	66	Maddy.....	80	Noyes.....	81
Hopper.....	80	Magee.....	69, 90, 91	Oatman.....	80
Horstman.....	79	Malone.....	85	Oliver.....	80
House.....	84	Manley.....	78	Osborn.....	80
Houston.....	89	Marlow.....	81	Owen.....	87
Howard.....	78	Marshall.....	78	Parcher.....	80
Howell.....	80	Martin.....	69, 84, 90	Parker.....	86
Hoyt.....	81	Martindale.....	79	Partner.....	85
Huff.....	89	Martsof.....	89, 90	Pasters.....	84
Huffaker.....	67	Mason.....	80	Pastures.....	84
Hunt.....	79	Matthews.....	91	Patek.....	86
Hunter.....	91	McAdams.....	67	Patterson.....	69, 78
Hutson.....	78	McClain.....	79	Patton.....	78
Hutton.....	84	McClees.....	90	Pehl.....	84
Hyde.....	89	McClung.....	80	Perkins.....	85

Petre	66	Shirk	81	Wall	80
Philip	91	Shlichter	88	Wallace	81, 90, 91
Phillips	88	Shockley	81	Waples	79
Pierce	89	Short	66	Waring	85
Pitts	80	Siebold	81	Wark	82
Plummer	80	Skillman	85	Warner	66
Polson	80	Slattery	84	Watrous	69, 90
Pore	84	Smith. 79, 80, 81, 84, 85, 88, 90		Weeks	79
Pottberg	79	Smoot	78	Weidner	91
Potter	81	Smyth	80	West	89
Powell	84	Snodgrass	81	Westfall	84
Pratt	86, 91	St. Clair	79	Westlake	90
Preston	85	Stanley	80, 89	Weston	69, 90
Priest	85	Steele	67	White	69, 79, 91
Purkey	78	Steirs	90	Whiteley	79
Ramlow	69	Stephan	86	Whitfield	86
Redfearn	78	Stewart	78, 84	Williams	85
Redfield	69, 90	Stiffler	81	Williamson	87
Reid	78	Stocker	79	Willon	90
Reschke	81	Stogdill	69	Wilson	78, 80
Reser	79	Stout	69, 91	Winters	79
Rew	86	Stover	84	Wise	78
Reynolds	81	Straus	80	Wollman	88
Rhodes	69, 84, 90, 91	Stroud	80	Woodbury	66
Richmond	85, 86	Sturgeon	79	Woodman	69
Roberts	81	Swaney	67	Woods	86
Romig	69	Swartz	67	Woodside	79
Rounsaville	87	Taylor	81	Wurzel	80
Roy	81	Temple	87	Wynkoop	81
Royal	69, 88	Thomas	89	Yeager	85
Rupp	66	Thompson	84	Youse	79
Russ	78	Thornburg	79	Zimmermon	82
Russell	91	Throckmorton	90	Zink	81
Salmon	85	Tittsworth	89		
Sampson	69	Todd	88		
Sander	79	Toms	79		
Sargent	86	Trotter	78		
Saunders	84	Truesdell	86		
Schattner	66	Tucker	69, 90, 91		
Scheve	81	Unangst	80		
Schulte	86	Underwood	79		
Scott	69, 78, 90	Upp	79		
Selig	66	Vance	88		
Shacklett	80	VanDeventer	81		
Shaffer	81, 85	Voltz	79		
Shearon	69	Wagy	80		



PUBLICATION ORDER FORM

Name _____

Address _____

City, State, Zip _____

Tax exemption number, if applicable _____

Publication Number/Title	Qty.	Unit Price	Total Price

Make check payable to, and mail to:

Midwest Historical and Genealogical Society
PO Box 1121
Wichita, KS 67201-1121

POSTAGE/
HANDLING
(see chart below)

SUBTOTAL

* ‡ KS SALES TAX
(if applicable) _____ %

TOTAL DUE

SHIPPING AND HANDLING CHART

Merchandise Total	Shipping Charge
\$0.01 - \$24.99	\$4.00
\$25.00 - \$49.99	\$5.00
\$50.00 - \$99.99	\$7.00
\$100.00 - \$299.99	\$12.00
For each \$100.00 of merchandise above \$300.00, add \$4.00 to the \$12.00	

‡ Sales tax applies to Kansas destinations only; tax is the % rate at the delivered destination.

* If you are tax exempt send copy of exemption certificate with order.

Tax Exempt # _____



MIDWEST HISTORICAL AND GENEALOGICAL SOCIETY

PUBLICATIONS FOR SALE

Use order blank on last page to order

Pub #	Publication Title	Price
Wichita and Sedgwick County, KS		
101	History of Wichita and Sedgwick Co., KS. Past and Present, 1910, Vols. 1 and 2 in one book, reprint, 956 pgs., indexed. (hardbound)	\$45.00
21	Wichita City Death Certificates from the City Directory and cemeteries (1887-1899). Indexed, 304 pgs.	\$35.00
22	Flanagan-Hunt Mortuary Records, Vol I, Apr 16, 1912 - Apr 15, 1915, 150 pgs.	\$20.00
23	Flanagan-Hunt Mortuary Records, Vol II, Apr 1915 - Nov 1917, 150 pgs.	\$20.00
29	Wichita Fire Fighters 1881-1981 (History & Personnel Records), 158 pgs	\$20.00
24	1878 Wichita City Directory names, 34 pgs	\$6.00
25	1883 Wichita City Directory names, 72 pgs	\$10.00
26	1885 Wichita City Directory names, 114 pgs	\$15.00
27	1886/7, 1894, 1900 Wichita Business Directories, 75 pgs. Compiled by Barbara Marsh.	\$10.00
49	Abstracts of Marriages, Deaths, and other news items from Wichita newspapers and KS census records. Sept 1 to 6, 1879; and Sept 1, 1884 to Mar 31, 1885. Compiled by Jerry Stout. 94 pgs., indexed	\$15.00
2	Sedgwick Co., KS Marriage Records Book 1, 204 pgs, County Books #A-D, May 7, 1870 - Oct 22, 1889, index. Compiled by Bill Pennington	\$25.00
3	Sedgwick Co., KS Marriage Records Book 2, 213 pgs, County Books #E-H, Oct 22, 1889 - Jul 13, 1901, index. Compiled by Bill Pennington	\$25.00
4	Sedgwick Co., KS Marriage Records Book 3, 212 pgs, County Books #I-L, Jul 15, 1901 - Nov 11, 1908, index. Compiled by Bill Pennington	\$25.00
5	Sedgwick Co., KS Marriage Records Book 4, 189 pgs, County Books #M-P, Nov 11, 1908 - Jan 22, 1913, index. Compiled by Bill Pennington	\$25.00
6	Sedgwick Co., KS Marriage Records Book 5, 214 pgs, County Books #Q-T, Jan 18, 1913 - Sept 21, 1917, index. Compiled by Bill Pennington	\$25.00
7	Sedgwick Co., KS Marriage Records Book 6, 185 pgs, County Books #U-X, Sept 22, 1917 - Aug 4, 1920, index. Compiled by Bill Pennington	\$25.00
19	Sedgwick Co., KS Marriage Records Book 7, 253 pgs, County Books #Y-BB, Aug 4, 1920 - May 17, 1924, index. Compiled by Bill Pennington	\$25.00
20	Sedgwick Co., KS Marriage Records Book 8, 215 pgs, County Books #CC-FF, May 19, 1924 - Dec 1, 1928, index. Compiled by Bill Pennington	\$25.00
70	Sedgwick Co., KS Marriage Records Book 9, 192 pgs, County Books #GG-JJ, Dec 1, 1928 - Nov 25, 1933, index. Compiled by Bill Pennington & Kimberly Rix	\$25.00
72	Sedgwick Co., KS Marriage Records Book 10, 196 pgs, County Books #KK-NN, Nov 25, 1933 - Aug 22, 1938, index. Compiled by Bill Pennington & Diana Miller	\$25.00
73	Sedgwick Co., KS Marriage Records Book 11, 196 pgs, County Books #OO-QQ, Aug 22, 1938 - Dec 27, 1941, index. Compiled by Bill Pennington & Diana Miller	\$25.00
28	1888 & 1891 Sedgwick Co., KS Directory Names, 20 pgs. (Wichita not included)	\$5.00
30	1903/4 Sedgwick Co., KS Directory Names, 39 pgs.	\$6.00
33	Sedgwick Co., KS Naturalizations and Declarations of Intentions, 1870 - 1906, 93 pgs. Compiled by Barbara Marsh	\$12.00
9	Index to Portrait and Biographical Album of Sedgwick Co., 1888, 166 pgs.	\$22.00
10	Area Keys: Sedgwick Co, KS, 52 pgs.	\$7.00
58	Sedgwick Co., KS Landowners & Tenants Directory, 1971, 52 pgs.	\$7.00
60	Obituaries from the Wichita Beacon Nov 2, 1885 - Jun 11, 1886, 14 pgs.	\$4.00
11	List of Cemeteries in Sedgwick Co., KS, w/map, 1981, 7 pgs.	\$4.00
71	Probate Index-18th Judicial District, Sedgwick Co., KS-1870 to Nov 1917	\$25.00
Butler County, KS		
38	Butler Co., KS Wills 1869 - 1901, 60 pgs.	\$10.00
36	Area Keys, Butler Co., KS, 50 pgs.	\$7.00
37	Butler Co., KS Marriages 1861 - 1885, 74 pgs.	\$10.00

MIDWEST HISTORICAL & GENEALOGICAL SOCIETY, INC.
 PO BOX 1121
 WICHITA, KANSAS 67201-1121

Change Service Requested

Publications for Sale, Continued

Pub #	Publication Title	Price
Chautauqua County, KS		
47	Chautauqua Co., KS Marriage Records, Book 1, County Books #A-D, index, 103 pgs, Jun 5, 1870 - Dec 29, 1891. Compiled by Charlotte Bennett	\$15.00
48	Chautauqua Co., KS Marriage Records, Book 2, County Books #E-H, index, 86 pgs, Jan 6, 1892 - Aug 22, 1905. Compiled by Charlotte Bennett	\$15.00
48A	Chautauqua Co., KS Marriage Records, Book 3, County Books #I-L, index, 112 pgs, Aug 22, 1905 - Apr 25, 1926.	\$15.00
50	Chautauqua Co., KS Marriages and Deaths From CEDAR VALE COMMERCIAL, Dec 1984 - Dec 1985, 12 pgs.	\$5.00
Harvey County, KS		
39	Harvey Co., KS Marriages 1872 - 1895, 120 pgs	\$15.00
52	Harvey Co., KS Marriages 1896 - Apr 24, 1898, index, 21 pgs	\$5.00
51	Deaths, Marriages and Births from Newton, KS local newspapers, selected from 1887 - 1888, 1892 - 1894, 1901 - 1902, 1915. 94 pgs, indexed.	\$25.00
Sumner County, KS		
41	Argonia Cemetery Index, Sumner Co., KS, 47 pgs.	\$6.00
203	Tombstone Inscriptions, Sumner Co., KS (hardbound), 406 pgs. Compiled by Robert Brady.	\$45.00
42	Sumner Co., KS Marriages, Book A, 1871 - 1880, index, 34 pgs. Compiled by Barbara Marsh.	\$6.00
59	Index to Sumner Co., KS Portraits & Biographical Album, 35 pgs.	\$6.00
204	Caldwell Cemetery, Sumner Co., KS (hardbound), 227 pgs, Dilmond D. & Evelyn I. (Sturm) Postlewait	\$45.00
Territorial Kansas		
44	Kansas Territorial Marriages, 1854 - 1861, 24 pgs.	\$6.00
43	Kansas Territorial Deaths, 1854 - 1861, 21 pgs.	\$6.00
62	Kansas Marriages, Births & Deaths Before 1854, 48 pgs.	\$10.00
Midwest Historical & Genealogical Society		
104	Past Issues of the MHGS REGISTER Any three issues.	\$2.50 \$6.00
53	Topical Index of MHGS REGISTER, Vols I -XXXI, 27 pgs.	\$3.00
105	Historical Buildings Note Cards, packet of 4, one each of original sketches of the Wichita post office, livestock exchange, Missouri Pacific depot, and the Santa Fe station	\$6.00
Midwest Area		
201	Index of Grant Co., OK Land Patents, 112 pgs (hardbound) with maps. Dilmond D. & Evelyn I. (Sturm) Postlewait	\$25.00